

ADDITIONAL RESTRICTIONS

PER C.O.F. Z.C. 10-40.60.210, D. MANUFACTURED HOME PARK.
 NO BUILDABLE AREA MAY BE LOCATED ANY CLOSER THAN 16 FEET FROM ANOTHER BUILDABLE AREA.
 NO BUILDABLE AREA MAY BE CLOSER THAN 8 FEET FROM PROPERTY BOUNDARIES.

THERE SHALL BE A MINIMUM DISTANCE OF 8 FEET FROM THE FRONT OF THE BUILDABLE AREA AND ANY PRIVATE STREET. THERE SHALL BE A MINIMUM DISTANCE OF 12 FEET BETWEEN THE SIDE OF A BUILDABLE AREA AND A PRIVATE STREET. A MINIMUM DISTANCE OF 25 FEET SHALL EXIST BETWEEN ANY BUILDABLE AREA AND A PUBLIC STREET WITH NO ACCESS FROM A BUILDABLE AREA ONTO A PUBLIC STREET.

ABBREVIATIONS

BA BUILDABLE AREA W WATER EX EXISTING
 FH FIRE HYDRANT S SEWER PUE PUBLIC UTILITY EASEMENT
 RES RESIDENTIAL F.U. FIXTURE UNITS

FOURTH STREET R.O.W. IMPROVEMENTS

ALL WORK IN THE FOURTH STREET RIGHT OF WAY INCLUDING BUT NOT LIMITED TO, WIDENING, PAVING, CURB & GUTTER, F.U.T.S., TRAIL, STRIPING, STREET LIGHTS, FIRE HYDRANTS, CURB RETURNS, AND THE 4TH LEG OF THE INTERSECTION AND TRAFFIC SIGNAL TO BE COMPLETED BY THE CITY OF FLAGSTAFF

RECREATION and STORAGE AREAS

MINIMUM RECREATION SPACE REQUIRED: 11,772 S.F. (10% OF TOTAL SITE)
 RECREATION SPACE PROVIDED: 13,551 S.F.
 INDOOR RECREATION FACILITY: 1,000 S.F.
 MINIMUM STORAGE SPACE REQUIRED: 75 S.F. PER UNIT (75 x 30 = 2,250 S.F.)
 MINIMUM STORAGE SPACE PROVIDED: 2,515 S.F.

LANDSCAPE CALCULATIONS

BUILDING FRONTAGE : 616 L.F. x 1/25 L.F. = 25 (1 TREE, 2 SHRUBS, 2 GROUNDCOVER)
 (FACING AN INTERIOR DRIVE)
 STREET BUFFER (FOURTH ST): 649 L.F. x 1/25 L.F. = 26 (1 TREE, 2 SHRUBS, 2 GROUNDCOVER)
 PARKING AREAS: 9 SPACES x 30 S.F. per SPACE = 270 S.F. OF LANDSCAPE AREA REQUIRED
 PERIPHERAL BUFFER (I-40): NEW 6' SPLIT FACE CMU WALL
 PERIPHERAL BUFFER (RES TO RES): EX 10' HIGH CMU WALL AND NEW 6' SPLIT FACE CMU WALL
 TOTAL NUMBER OF PLANT UNITS = 51 (51 TREES, 102 SHRUBS, 102 GROUNDCOVERS)

LANDSCAPE CREDITS FOR EXISTING TREES (TABLE 10-50.60.050.A)

EX. TREE SIZE	No. OF TREES NOT REQUIRED	No. OF EX. TREES	TREE CREDITS
6-10"	1	2	2
10' - 18"	2	39	78
>18"	3	7	21
			101 TOTAL

IMPERVIOUS SURFACE:

BUILDING PADs: 20,220 S.F.
 TRAVEL TRAILERS: 1,392 S.F.
 A.C. PAVEMENT: 19,119 S.F.
 CONCRETE VALLEY GUTTER: 1,095 S.F.
 ROLL CURB: 3,177 S.F.
 PARKING PADs: 7,776 S.F.
 DUMPSTER ENCLOSURE: 427 S.F.
 SIDEWALK: 430 S.F.
 TOTAL: 53,636 S.F.

LID ROOF REQUIRED=4,470 C.F.
 LID PROVIDED=4,754 C.F. @ DEPTH OF 1.0' (EBD#1)
 100 YR EDB#1 OUTFLOW=16.00 CFS;
 100 YR VOL=16,057 C.F.; DEPTH=2.84' (6875.34)

STREETS

THE STREETS SHOWN WITHIN THE FLAGSTAFF TINY HOUSE VILLAGE SHALL BE PRIVATE AND NO ON STREET PARKING IS PROPOSED.

STREET LIGHTS ON FOURTH ST.

THE PROPOSED STREET LIGHT SHOWN ON FOURTH ST. IS SCHEMATIC ONLY. SEE THE C.O.F. FOURTH STREET WIDENING PROJECT FOR CORRECT LOCATIONS OF STREET LIGHTS ON FOURTH ST.

AASHTO: CASE D - INTERSECTIONS WITH TRAFFIC SIGNAL CONTROL

AT SIGNALIZED INTERSECTIONS, THE FIRST VEHICLE STOPPED ON ONE APPROACH SHOULD BE VISIBLE TO THE DRIVER OF THE FIRST VEHICLE STOPPED ON EACH OF THE OTHER APPROACHES. LEFT TURNING VEHICLES SHOULD HAVE SUFFICIENT SIGHT DISTANCE TO SELECT GAPS IN ONCOMING TRAFFIC AND COMPLETE LEFT TURNS. APART FROM THESE SIGHT CONDITIONS, THERE ARE GENERALLY NO OTHER APPROACH OR DEPARTURE SIGHT TRIANGLES NEEDED FOR SIGNALIZED INTERSECTIONS. SIGNALIZATION MAY BE AN APPROPRIATE CRASH COUNTERMEASURE FOR HIGHER VOLUME INTERSECTIONS WITH RESTRICTED SIGHT DISTANCE THAT HAVE EXPERIENCED A PATTERN OF SIGHT-DISTANCE RELATED CRASHES.

CLEAR VIEW ZONES (STOP CONTROLLED)

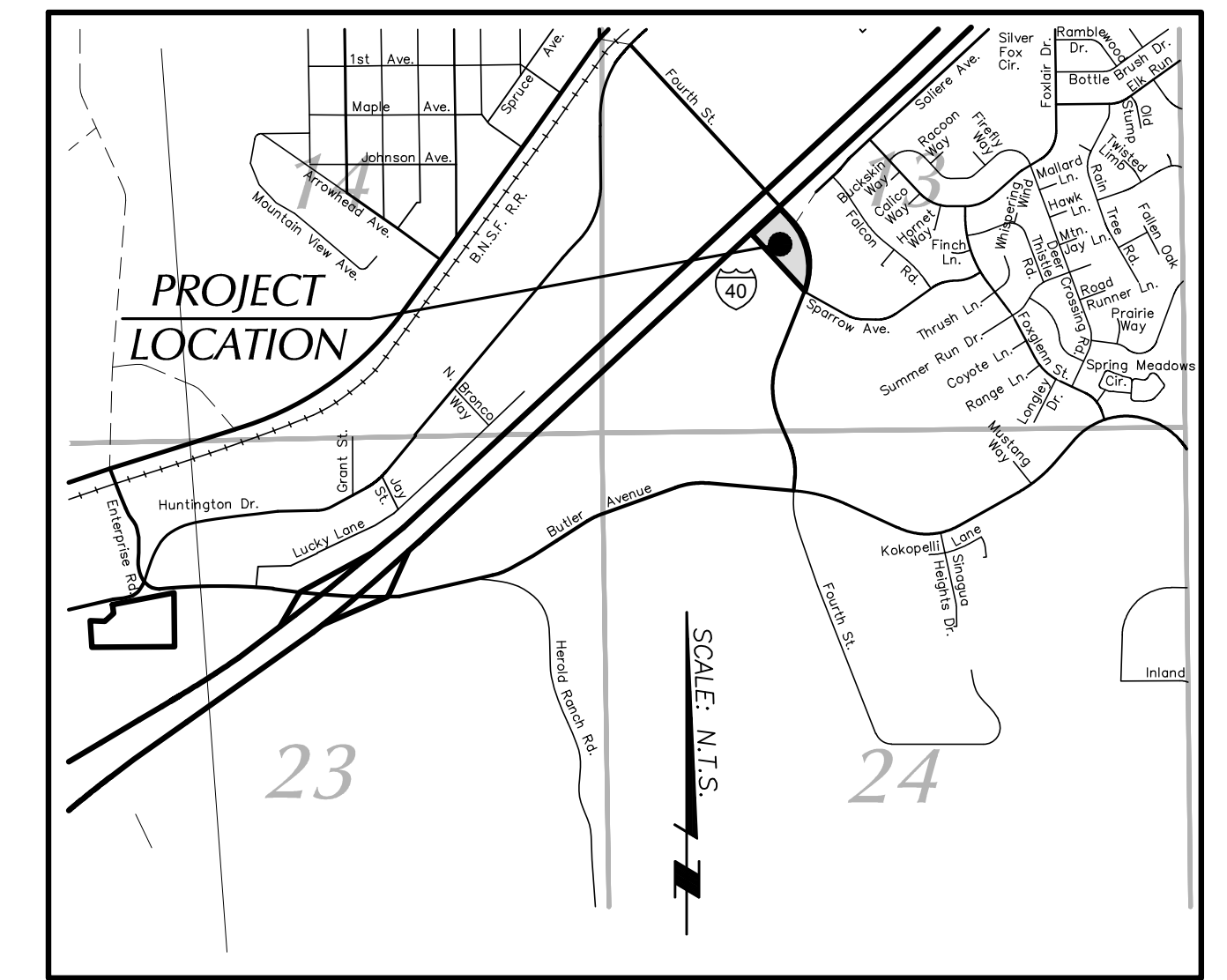
POSTED SPEED LIMIT = 35
 DESIGN SPEED = 40 MPH (ARTERIAL MINOR)
 14.5' FROM MAJOR ROAD TRAVEL WAY
 CASE B2 RIGHT TURN FROM MINOR (TYP OF R.T.O.R.)
 I.S.D. TO LEFT=1.47(35)(6.5)=334.4'

FLAGSTAFF TINY HOUSE VILLAGE

SITE PLAN

LOCATED IN THE SW1/4 SECTION 13, T 21 N, R 7 E, G. & S.R.M., FLAGSTAFF, COCONINO COUNTY, ARIZONA

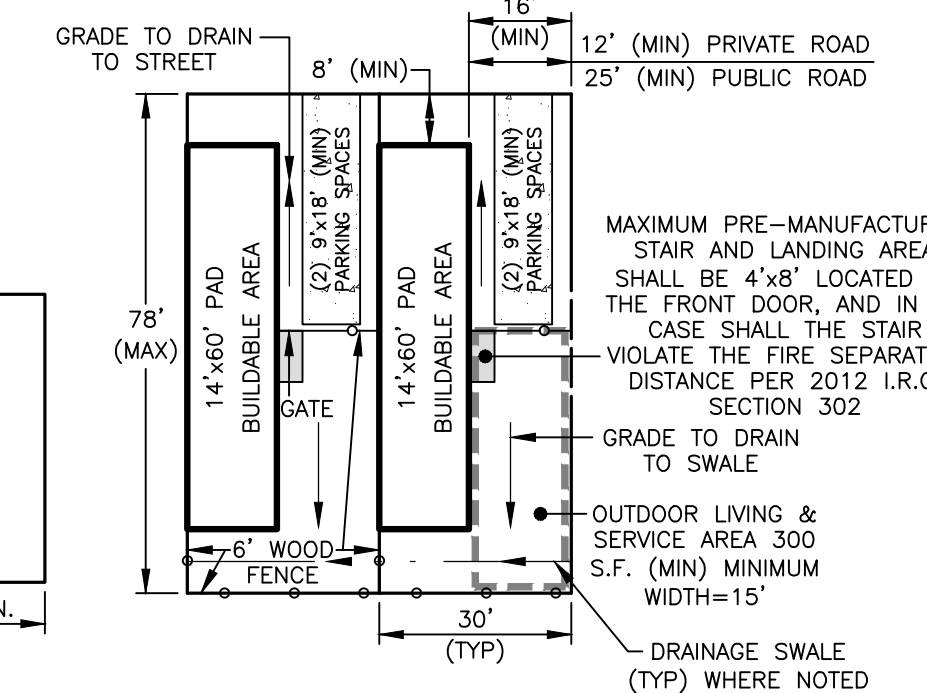
POST R.O.W. CHANGE



VICINITY MAP
N.T.S.

PROJECT INFORMATION

PROJECT NAME:	FLAGSTAFF TINY HOUSE VILLAGE
PROJECT LOCATION:	1411 N. FOURTH ST. FLAGSTAFF, AZ. 86001
LATITUDE:	35° 12'02.5"
LONGITUDE:	111° 36'27.8"
APN NUMBER:	107-16-0085
TOTAL SQUARE FOOTAGE (PRE R.O.W. CHANGE):	126,982
TOTAL SQUARE FOOTAGE (POST R.O.W. CHANGE):	111,722
TOTAL ACREAGE (PRE R.O.W. CHANGE):	2.915±
TOTAL ACREAGE (POST R.O.W. CHANGE):	2.5648±
TOTAL NUMBER OF UNITS:	30
NUMBER OF MANUFACTURED HOMES:	24
NUMBER OF TRAVEL TRAILERS:	6
DENSITY:	11.7 / ACRE
HOUSING PARKING SPACES REQUIRED:	2 PER UNIT
HOUSING PARKING SPACES PROVIDED:	60 SPACES
GUEST PARKING SPACES REQUIRED:	1 PER 8 UNITS = 4 SPACES
GUEST PARKING SPACES PROVIDED:	9 SPACES
TOTAL PARKING SPACES REQUIRED:	64
TOTAL PARKING SPACES PROVIDED:	69
CURRENT ZONING DISTRICT:	MH
PROPOSED ZONING DISTRICT:	MH
CURRENT USE:	VACANT
PROPOSED USE:	MANUFACTURED HOME PARK
OWNER/DEVELOPER:	FLAG HOLDINGS LLC, 495 S. RIVER RUN RD. SUITE 100 FLAGSTAFF, AZ. 86001 MR. DAVID CARPENTER (928) 380-5808



TRAVEL TRAILER TYPICAL LOT LAYOUT

PRELIMINARY
NOT FOR CONSTRUCTION OR RECORDING

Mogollon inc
ENGINEERING & SURVEYING
4111 N. Santa Fe Avenue
Flagstaff, Arizona 86001
Phone: 928-214-0214

PRELIMINARY
NOT FOR CONSTRUCTION OR RECORDING

REVISIONS PER C.O.F. COMMENTS DATED 7/24/18
 PER C.O.F. COMMENTS DATED 10/4/18
 VERT. SCALE: N/A
 HOR. SCALE: 1"=30'

PROJECT NO. 17268
 DATE: 11/29/18
 DESIGNED BY: P.ME
 DRAWN BY: P.ME
 CHECKED BY: K.VH

CONCEPT #13
 PZ-18-00017-01

FLAGSTAFF TINY HOUSE VILLAGE

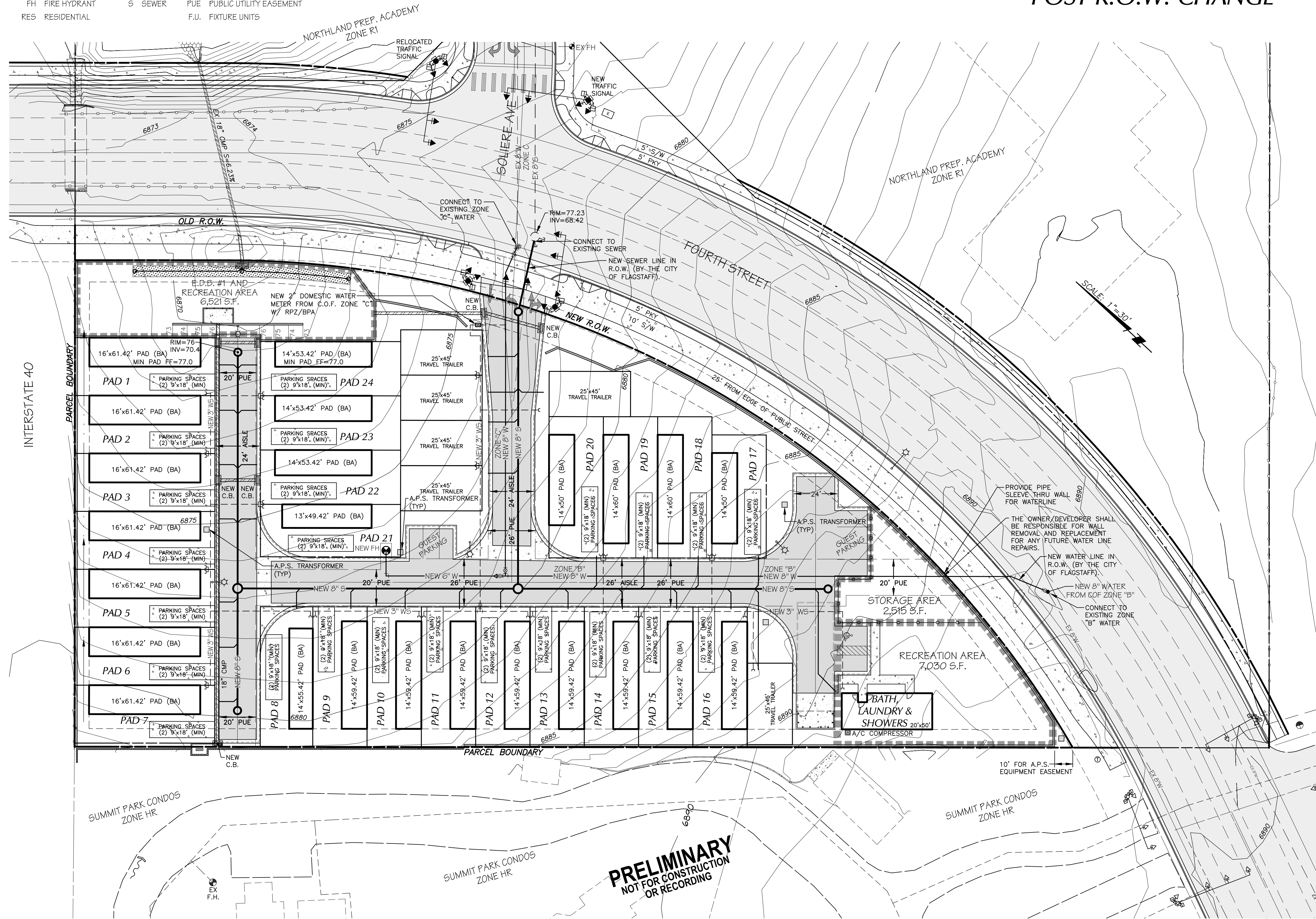
SITE PLAN

LOCATED IN THE SW1/4 SECTION 13,
T 21 N, R 7 E, G. & S.R.M., FLAGSTAFF,
COCONINO COUNTY, ARIZONA

POST R.O.W. CHANGE

ABBREVIATIONS

BA BUILDABLE AREA W WATER EX EXISTING
FH FIRE HYDRANT S SEWER PUE PUBLIC UTILITY EASEMENT
RES RESIDENTIAL F.U. FIXTURE UNITS



TYPICAL UNIT FIXTURE COUNT

BUILDING PADS	
BATHROOM GROUP:	7.2 F.U. (ASSUMES 2 BATHROOMS)
DISHWASHER:	1.4 F.U.
KITCHEN SINK:	1.4 F.U.
WASHING MACHINE:	1.4 F.U.
HOSE BIBB (1 PER UNIT):	3 F.U.
PER UNIT TOTAL:	14.4 F.U. (PER UNIT)
PER 2012 I.P.C.	PER 2012 I.P.C.
SUB TOTAL FOR BUILDING PADS:	14.4 x 24 = 345.6 F.U.

TRAVEL TRAILERS	
BATHROOM GROUP:	3.6 F.U.
KITCHEN SINK:	1.4 F.U.
HOSE BIBB (1 PER UNIT):	3 F.U.
PER TRAVEL TRAILER TOTAL:	8 F.U. (PER TRAVEL TRAILER)
PER 2012 I.P.C.	PER 2012 I.P.C.
SUB TOTAL FOR TRAVEL TRAILER:	6 x 8 = 48 F.U.

BATH, LAUNDRY BUILDING	
BATHTUB:	8.0 F.U. (ASSUMES 2 BATHTUBS)
LAVATORY:	4.0 F.U. (ASSUMES 2 LAVATORIES)
WATER CLOSET:	10.0 F.U. (ASSUMES 2 WATER CLOSETS)
KITCHEN SINK:	4.0 F.U. (ASSUMES 1 SINK)
SERVICE SINK:	3.0 F.U. (ASSUMES 1 SINK)
WASHING MACHINE:	3.0 F.U. (ASSUMES 2 MACHINES)
HOSE BIBB:	3.0 F.U.
SUB TOTAL FOR BUILDING:	35 F.U. PER 2012 I.P.C.
TOTAL FIXTURE UNITS:	429 (111 G.P.M.) PER 2012 I.P.C.

SCALE: 1"=30'

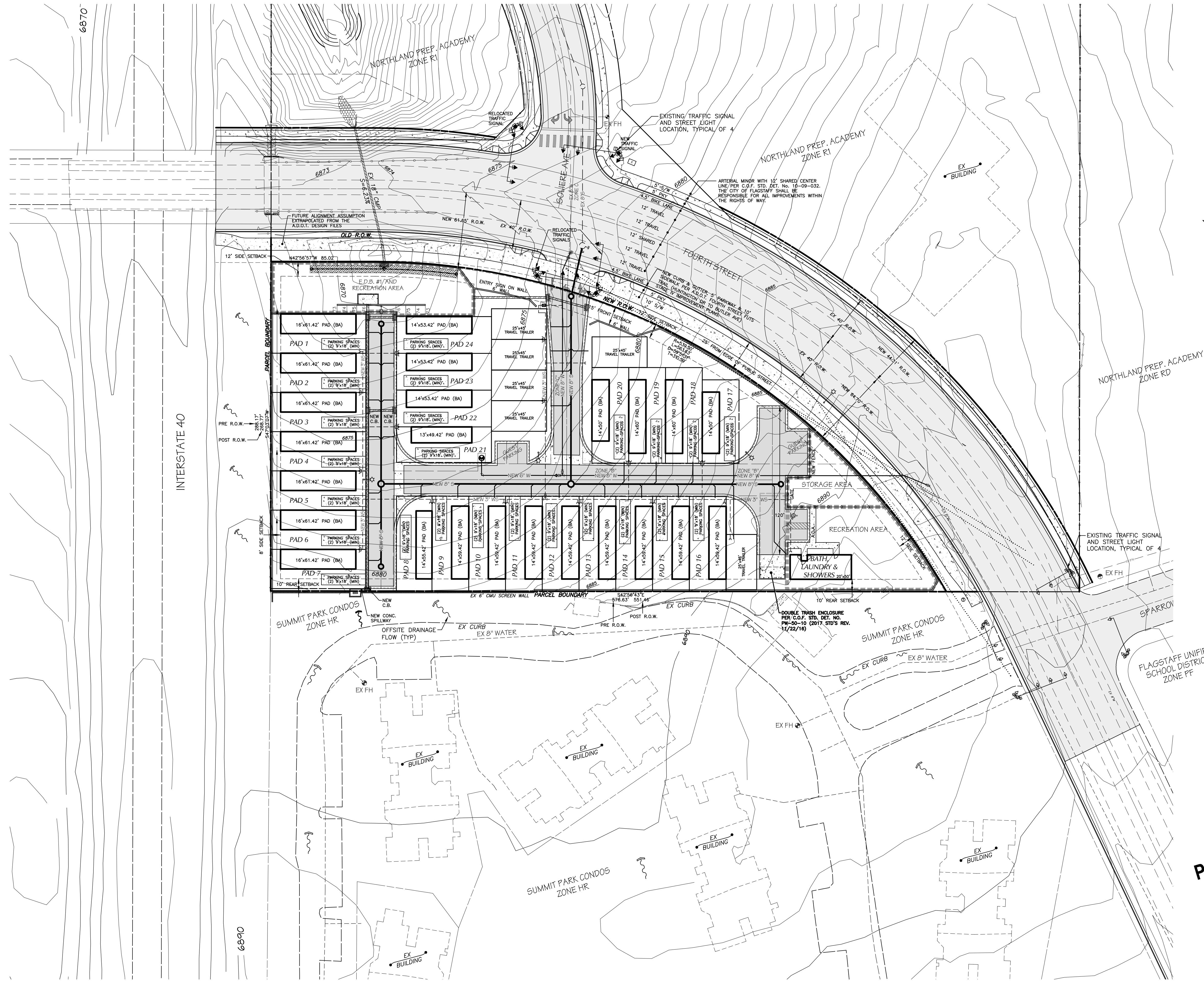
Mogollon
ENGINEERING & SURVEYING
4111 N. Santa Fe Avenue
Flagstaff, Arizona 86001
Phone: 928-214-0214

PRELIMINARY
NOT FOR CONSTRUCTION
OR RECORDING

Mogollon
ENGINEERING & SURVEYING

PROJECT NO. 17268 REVISIONS PER C.O.F. COMMENTS DATED 7/24/18
DESIGNED BY: P.M.E. FN: SHEET-02.DWG PER C.O.F. COMMENTS DATED 10/4/18
DRAWN BY: P.M.E. VERT. SCALE: N/A
CHECKED BY: K.V.H. HOR. SCALE: 1"=30'

PRELIMINARY
NOT FOR CONSTRUCTION
OR RECORDING



PRELIMINARY
NOT FOR CONSTRUCTION
OR RECORDING

SHEET NO. 3 OF 3
COF PROJECT #

Mogollon
ENGINEERING & SURVEYING

411 W. Santa Fe Avenue
Flagstaff, Arizona 86001
Phone: 928-214-0214

11/29/18
MES#17268

FLAGSTAFF
TINY HOUSE VILLAGE
SITE PLAN - AREA MAP

PROJECT NO. 17268	REVISIONS PER C.O.F. COMMENTS DATED 7/24/18
DESIGNED BY: P.M.E.	FN: SHEET-03.DWG PER C.O.F. COMMENTS DATED 10/4/18
DRAWN BY: P.M.E.	VERT. SCALE: N/A
CHECKED BY: K.V.H.	HOR. SCALE: 1"=80'

NOTES

1" TABLE MESA BROWN CRUSHED STONE TO BE SPREAD IN ALL LANDSCAPED AREAS

DEWITT WEED BARRIR TO BE USED UNDER CRUSHED STONE

IRRIGATION FOR EACH PAD WILL BE RUN OFF A BATTERY OPERATED CONTROLLER ATTACHED TO THE SPIGOT

IRRIGATION FOR SETBACK PLANTS WILL BE RUN OFF THE MAINLINE & WILL INCLUDE BACKFLOW PREVENTOR AND BATTERY OPERATED TIMER IN THE VALVE BOX

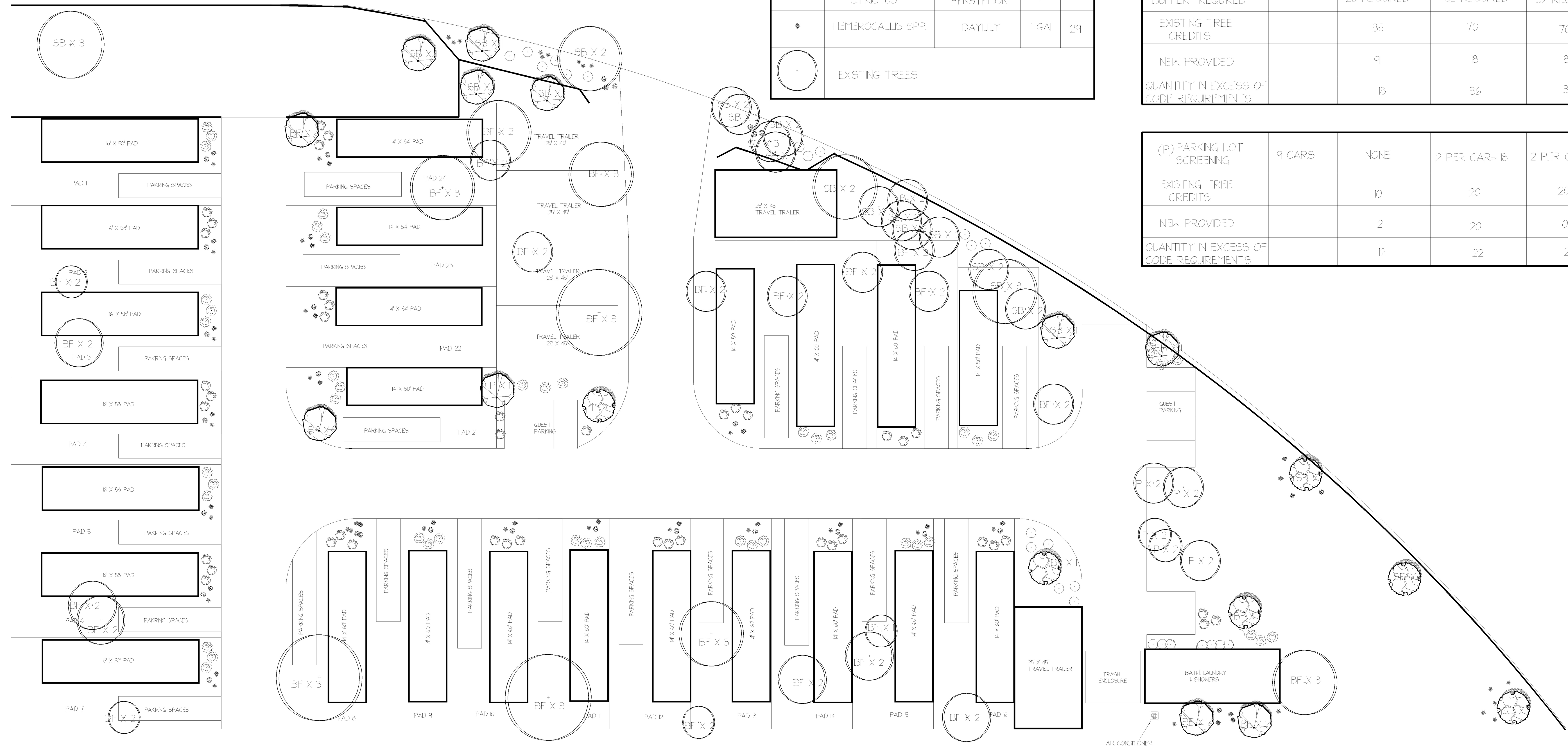
SYMBOL	BOTANICAL NAME	COMMON NAME	SIZE	QTY
	MALUS SPP.	FLOWERING CRABAPPLE	15 GAL	11
	PRUNUS VIRGINIANA 'CANADA RED'	CANADA RED CHOKECHERRY CLUMP	15 GAL	6
	CARYOPTERIS SP.	BLUE MIST SPIREA	5 GAL	46
	POTENTILLA FRUTICOSA	POTENTILLA	5 GAL	42
	SYMPHIOCARPUS SPP.	SNOWBERRY	5 GAL	25
	ECHINACEA PURPUREA	PURPLE CONEFLOWER	5 GAL	27
	PENSTEMON STRICTUS	ROCKY MOUNTAIN PENSTEMON	1 GAL	37
	HEMEROCALLIS SPP.	DAYLILY	1 GAL	29
	EXISTING TREES			

LANDSCAPE DATA

LANDSCAPE AREA	LENGTH OR QUANTITY	TREES REQUIRED	SHRUBS REQUIRED	GROUNDCOVER REQUIRED
(BF) BUILDING FOUNDATION REQUIRED	620 FT.	1 PER 25 LN. FT. 25 REQUIRED	2 PER TREE 50 REQUIRED	2 PER TREE 50 REQUIRED
EXISTING TREE CREDITS		58	116	116
NEW PROVIDED		6	75	75
QUANTITY IN EXCESS OF CODE REQUIREMENTS		39	141	141

(SB) STREET BUFFER REQUIRED	649 FT.	1 PER 25 LN. FT. 26 REQUIRED	2 PER TREE 52 REQUIRED	2 PER TREE 52 REQUIRED
EXISTING TREE CREDITS		35	70	70
NEW PROVIDED		9	18	18
QUANTITY IN EXCESS OF CODE REQUIREMENTS		18	36	36

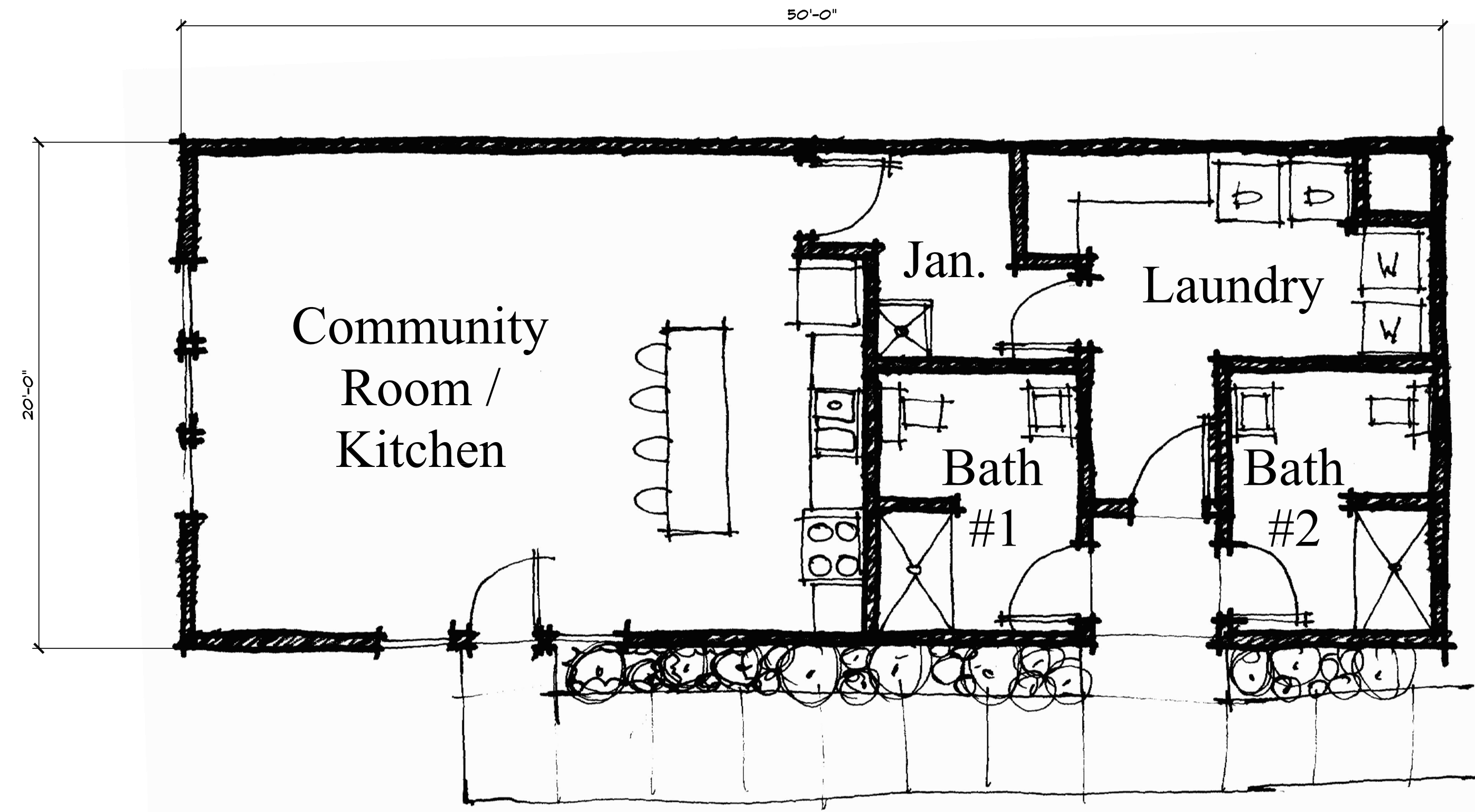
(P) PARKING LOT SCREENING	9 CARS	NONE	2 PER CAR= 18	2 PER CAR= 18
EXISTING TREE CREDITS		10	20	20
NEW PROVIDED		2	20	0
QUANTITY IN EXCESS OF CODE REQUIREMENTS		12	22	2



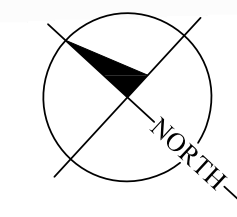
Preliminary -
Not for
Construction

Revisions

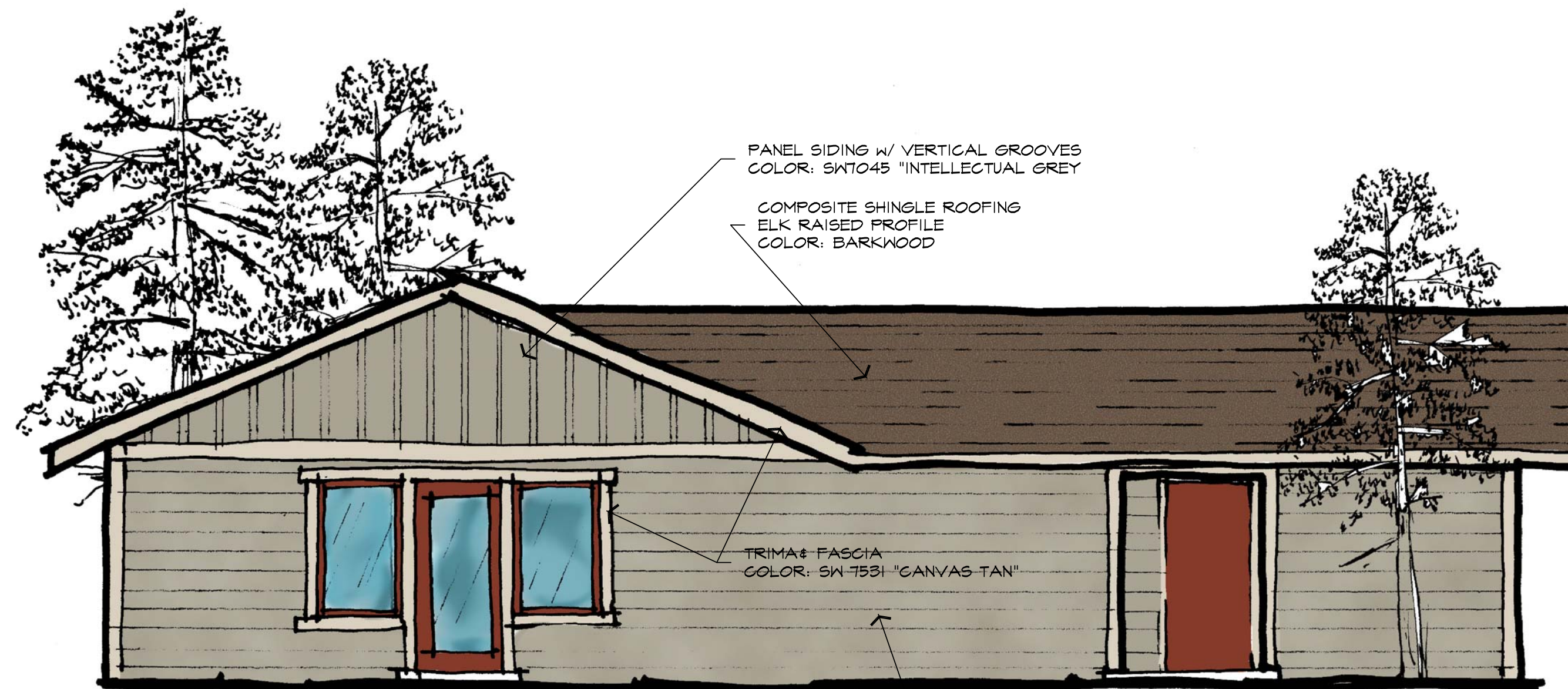
- 1
- 2
- 3
- 4



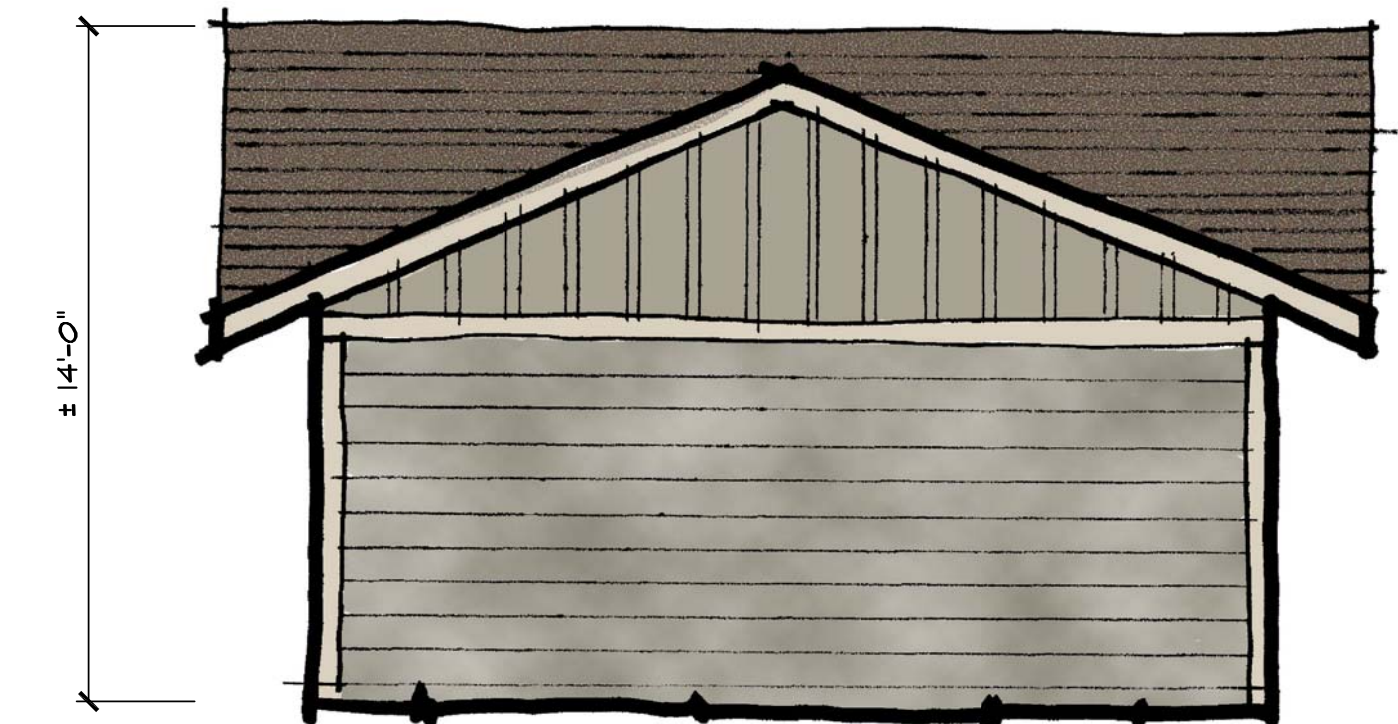
Floor Plan



Left Elevation



Front Elevation
(Rear Elevation Sim.)



Right Elevation

HOPE
CONSTRUCTION
GENERAL CONTRACTING & CONSTRUCTION MANAGEMENT

Tiny House Village Community Center
Flagstaff, Arizona

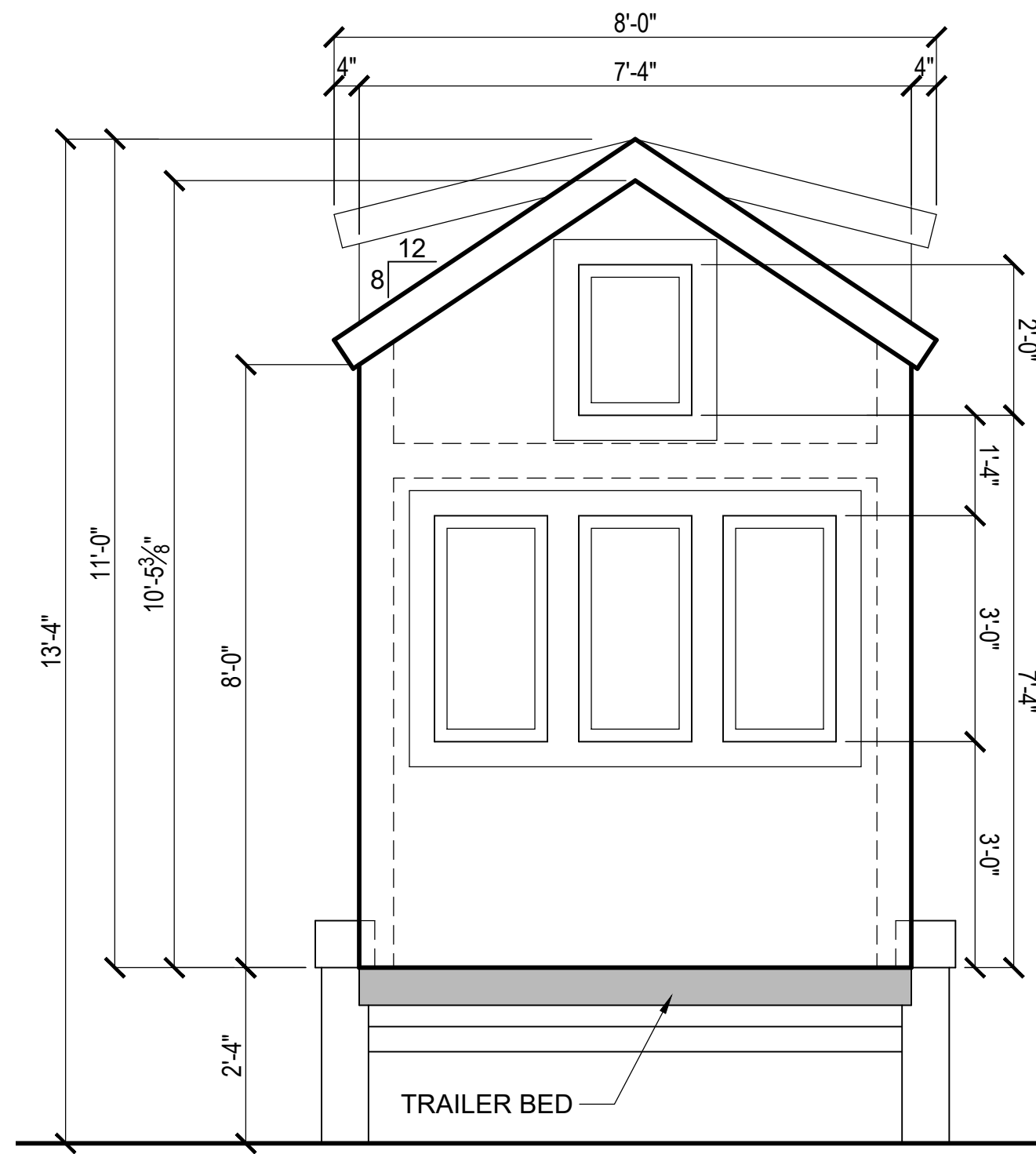
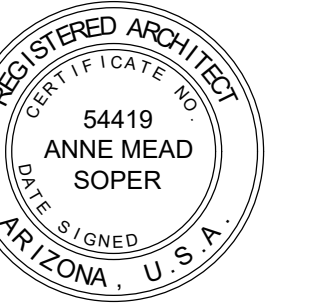
Project Number
2018.09

Drawing

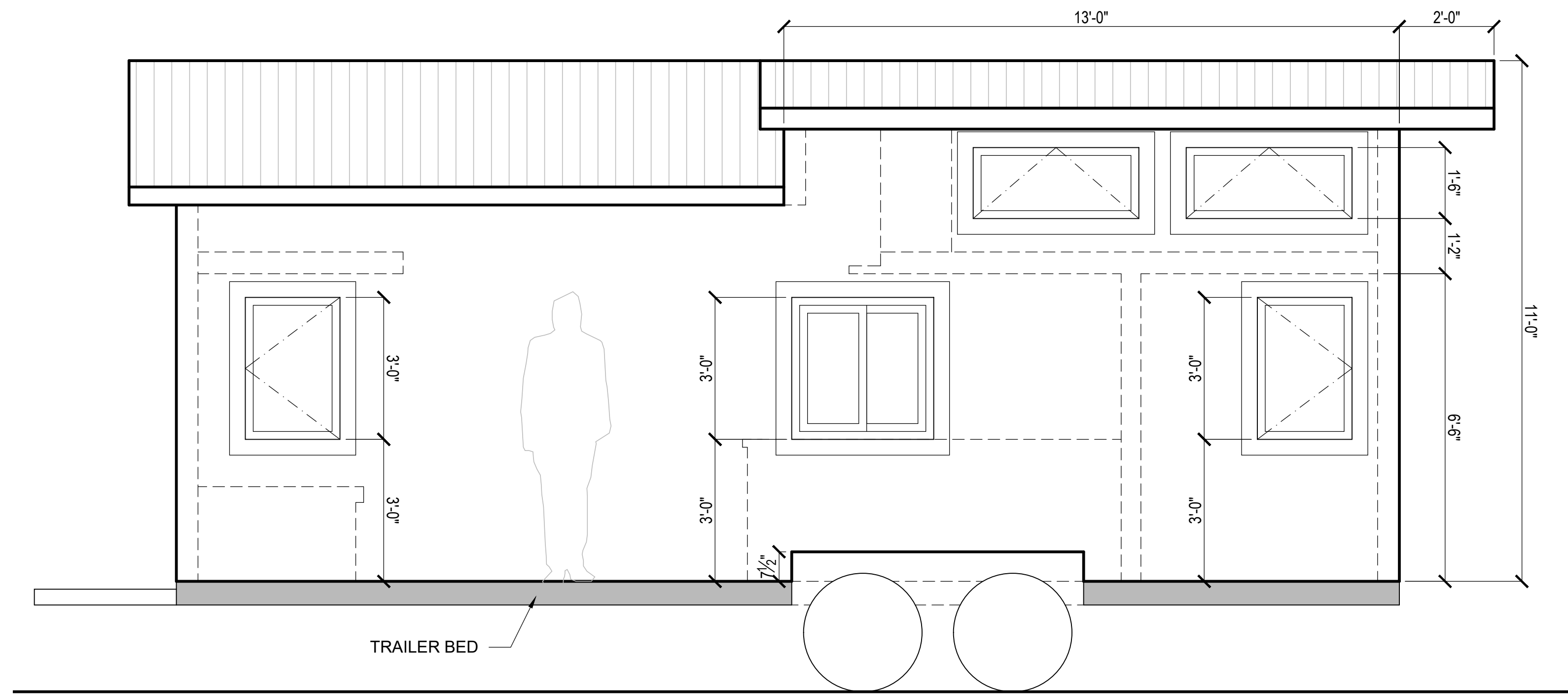
Shapes & Forms
ARCHITECTS, INC.

1823 West Heavenly Court
Flagstaff, Arizona 86001
(928) 213-9626
(928) 255-5537 FAX
www.shapes-forms.com

Sheet



FRONT ELEVATION
SCALE: 1/2" = 1'-0"



SIDE ELEVATION
SCALE: 1/2" = 1'-0"

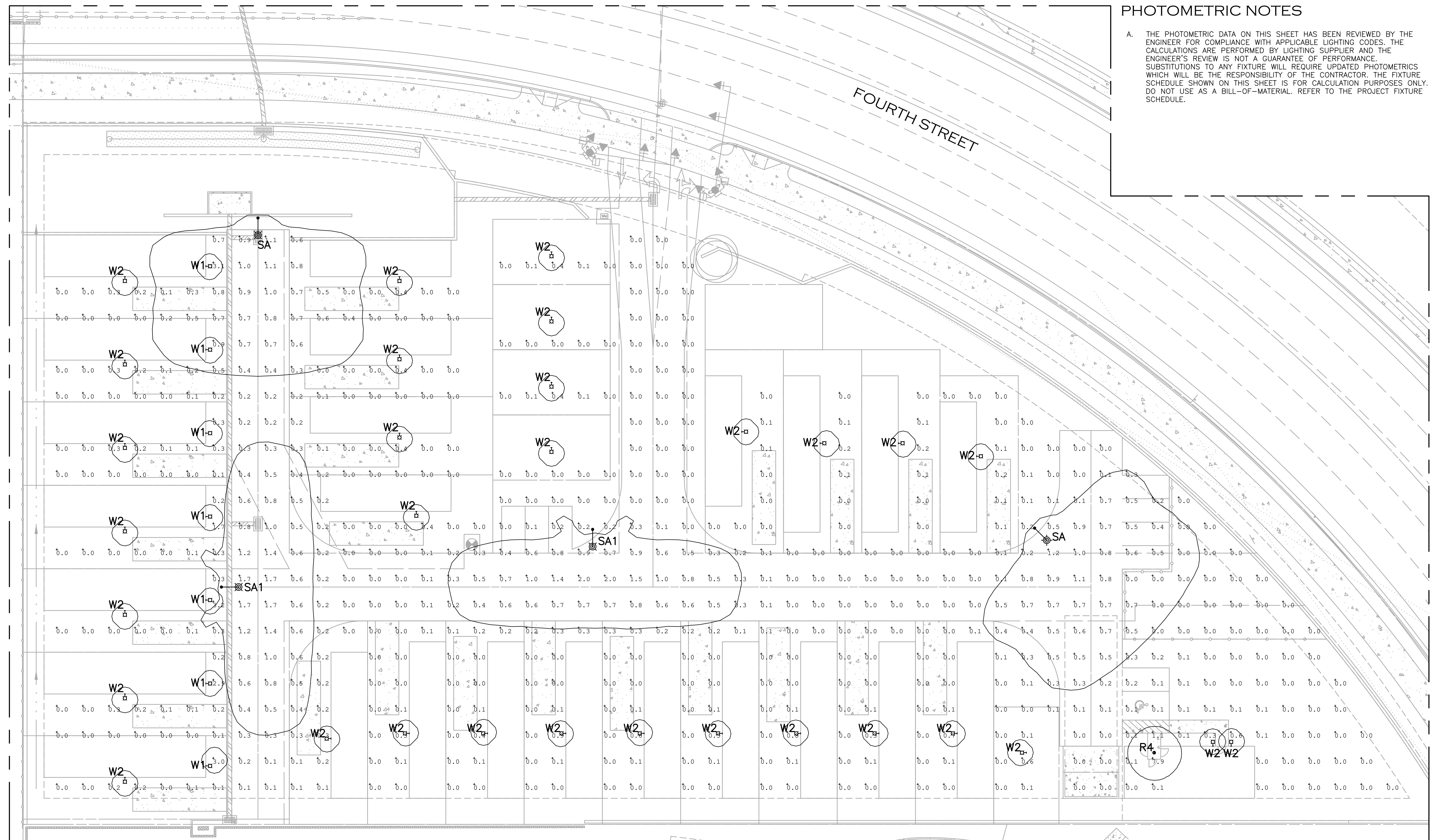


TYPICAL EXTERIOR MATERIAL PALETTE
SCALE: N.T.S.



PHOTOMETRIC NOTES

A. THE PHOTOMETRIC DATA ON THIS SHEET HAS BEEN REVIEWED BY THE ENGINEER FOR COMPLIANCE WITH APPLICABLE LIGHTING CODES. THE CALCULATIONS ARE PERFORMED BY LIGHTING SUPPLIER AND THE ENGINEER'S REVIEW IS NOT A GUARANTEE OF PERFORMANCE. SUBSTITUTIONS TO ANY FIXTURE WILL REQUIRE UPDATED PHOTOMETRICS WHICH WILL BE THE RESPONSIBILITY OF THE CONTRACTOR. THE FIXTURE SCHEDULE SHOWN ON THIS SHEET IS FOR CALCULATION PURPOSES ONLY. DO NOT USE AS A BILL-OF-MATERIAL. REFER TO THE PROJECT FIXTURE SCHEDULE.



VoltaUS CONSULTING
 2633 E. Indian School Rd., Ste. 210, Phoenix, AZ 85016
 Tel. (480) 659-0511, VoltaUS.com

01/14/19
 PROFESSIONAL ENGINEER
 30536
 WILLIAM J. BETHUNE, IV
 SEAL EXPIRES: 09/30/20

HOPE CONSTRUCTION
 GENERAL CONTRACTING & CONSTRUCTION MANAGEMENT

FLAGSTAFF VILLAGE
 TINY HOUSE VILLAGE
 1411 N. FOURTH STREET
 COCONINO COUNTY, ARIZONA

REVISIONS	DATE	DESCRIPTION
	01/14/19	ISSUED FOR PERMIT

1 PHOTOMETRIC SITE PLAN
 SCALE: 1/8"=1'-0"

Symbol	Qty	Label	Arrangement	LLF	Description	Tag	Lum. Lumens	Lum. Watts	MANUFAC
○	1	R4	SINGLE	0.900	LF4SL-4LFSL11L30K8	9'	1055	12.7	PRESCOLITE
□	2	SA	SINGLE	0.900	VP-L-64E2-115-AMB-2	20'	3528	115	Hubbell Lighting Inc, dba Beacon Pr
□	2	SA1	SINGLE	0.900	VP-L-64E2-115-AMB-4	20'	3454	115	Beacon Products
□	7	W1	SINGLE	1.000	BNSW20045LBRCS	9'	240	6	AFX INC.
□	31	W2	SINGLE	1.000	BNSW20045LBRCS	9'	240	6	AFX INC.

Label	CalcType	Units	Avg	Max	Min	Avg/Min	Max/Min
Site	Illuminance	Fc	0.28	7.9	0.0	N.A.	N.A.

No. of LAMPS	WATTS PER LAMP	LAMP TYPE	ILLUMINATION CLASS 1, 2, 3	LIGHTING PLAN SYMBOL	SHIELDING	LUMENS PER FIXTURE	LUMEN REDUCTION FOR RECESSED FIXTURES	LUMENS TOTAL
2	115	NSALED	2	SA	FULLY	3528	0	7056
2	115	NSALED	2	SA1	FULLY	3454	0	6908
7	6	LED	2	W1	FULLY	240	0	1680
31	6	LED	2	W2	FULLY	240	0	7440
1	1	LED	2	R4	FULLY	1055	0	1055

LUMEN TOTAL NON-LPS / NON-NSALED 10,175
 LUMEN TOTAL FULLY SHIELDED 24,139
 LUMEN TOTAL PARTIALLY SHIELDED 0
 LUMEN TOTAL ALL TYPES 24,139
 TOTAL LUMENS PERMITTED 256,000

TOTAL LUMENS ALLOWED (ZONE III):
 2.56 ACRES X 100,000 LUMENS PER
 ACRE = 256,000 LUMENS ALLOWED

2 LUMEN OUTPUT CALCULATIONS
 NO SCALE

PHOTOMETRIC SITE PLAN
E 1.1



LOCATION	DATE
PREPARED BY	QUANTITY
COMMENTS	FIXTURE TYPE
CATALOG NUMBER	

Bronson Outdoor LED Coach Light BNSW Series

Features
This Outdoor LED Wall Sconce produces 240 lumens from only 6 watts of electrical power. The Sconce mounts to a standard electrical box. The LEDs are powered by a Class II Low-voltage LED driver.

Construction
The wall plate, arm and diffuser cover are all made from die-cast aluminum with a durable powder coat. Power supply connections must be made in junction box (by others).

Finish
Durable powder-coat black painted finish.

Diffuser
Individual clear seeded-glass diffuser panes are framed within die-cast housing.

Electrical
UL listed electronic high power factor LED Driver, 120V 60 Hz AC

Lamping
Uses (2) Long life, non-replaceable LED chips.

Certification
cETLus listed for wet locations.

Warranty
Limited warranty. This fixture is free from defects in materials and workmanship for a period of 3 years from date of purchase.

Specifications and dimensions subject to change without notice.

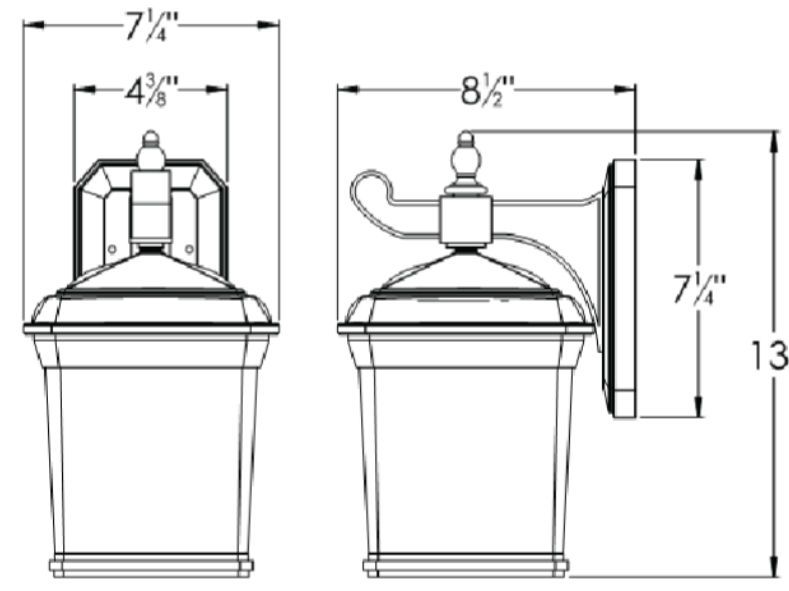
Ordering Information:

Black Lamp H W D
BNSW2004SLBKCS LED 13" 7-1/4" 8-1/2"

2345 N. Erie Krueger Circle • Waukegan, IL 60087 • P: 847.249.5970 • F: 847.249.2618 • www.AFXinc.com

R1/14

③ FIXTURE TYPES 'W1' & 'W2' (FULLY SHIELDED)
NO SCALE



Type:
Project Name:
Notes:

rev. 07.18.2017
VIPER - LARGE (LED)
Large Viper Luminaire
Max Weight: 25.0 lbs
Max EPA: 1 sq ft

Sample WP-L 64E-115 AMB 7SR 180 UNV PCR-TL RA 887
Ordering A B C D E F G H I

DETAILS

A. MODEL
VP-L Viper - Large

B. ENGINE-WATTS
64E-115 115 Watts - LED array
80E-140 140 Watts - LED array
90E-170 170 Watts - LED array

C. LED CHIP WAVELENGTH
AMB amber 500nm (std.)

D. OPTICS
T2 type II
T3 type III
T4 type IV
7SR type V, rectangular
TSGM type V, square medium
T9W type V, round wide

E. VOLTAGE
UNV 120-277V
347V 347V
480V 480V

F. ELECTRICAL OPTIONS
PCR-TL photocell, twist-lock
PCR-SC photocell, shoring cap
2PF dual power feed**

G. HOUSE SIDE SHIELD OPTIONS
HSS-90 house side shield 90°
HSS-180 house side shield 180°

H. MOUNTING OPTIONS
RA rectangular arm
SP2 2-3/8" CO slip-fitter
WB wall bracket

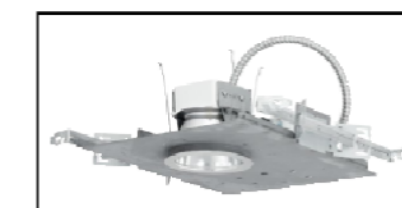
I. COLOR
BBT basic black textured
BMT black matte textured
BWT white textured
MBT metallic bronze textured
BZT bronze textured
DBT dark bronze textured
GYS grey smooth
GNT dark platinum smooth
GNT green textured
MST metallic silver textured
MTT metallic titanium textured
DWT old world iron

DRILL PATTERN

2041 58th Avenue Circle East Bradenton, FL 34203 Phone: (800) 345-4928 Fax: (941) 751-5535

ORDERING

② FIXTURE TYPES 'SA' & 'SA 1'
NO SCALE



4" LED Downlight LF4SL
120V-277V
0-10V Dimming

APPLICATIONS:
The LF4SL is a 4" specification grade LED open downlight that utilizes high efficiency LEDs to obtain color consistency, energy savings, and low maintenance costs. 50,000 hours minimum life up to 35°C (95°F) in open plenum applications.

HOUSING:
One-piece 22 gauge non-corrosive steel platform. Pre-wired base with snap-on cover for easy access. Snap-in connector from driver compartment allows easy installation of light engine. Trim assembly without back cover or before fix ending and can be upgraded to accommodate technology improvement. Approve for 8 1/2" x 4" x 1/2" No. 12 AWG conductors rated for 90°C through wiring.

REFLECTOR:
High purity aluminum, Alzak, interference suppressed, semi-elliptical reflector. Self-fine standard. Painted white with (W) available as option.

LED LIGHT ENGINE:
The LF4SL uses the Philips Fortimo DDM LED Module. This module provides controlled color consistency (3 SDCM) from future to future. The system is designed for optimal life and lumen maintenance >50,000 hours at 70% lumen maintenance. Both reflector and light engine assembly are mechanically retained to housing.

LED DRIVER:
The LF4SL utilizes the Philips Fortimo LED Driver specifically designed to optimize efficiency of the Fortimo DDM Module. Driver is designed to match the 50,000 hours minimum life expectancy of the system. Meets UL Class 2, inherent short circuit protection, self limited, overvoltage protected, critical temperatures are reached on driver or LED module, integrated thermal feedback loop will gradually reduce current to protect system life. Driver is universal 120V/277V. Optional Lumen Series A driver is also available.

DIMMING:
Comes standard with 0-10V dimming capability. Flicker-free dimming to 10%. 0-10V control away consume up to 1 inch 0-10V. Lumen 2 wire, 3 wire, and EcoSystem dimming available to 1% and DMX with RDV remote device management dimming to less than 0.1%.

INSTALLATION:
Comes standard with 0-10V dimming capability. Flicker-free dimming to 10%. 0-10V control away consume up to 1 inch 0-10V. Lumen 2 wire, 3 wire, and EcoSystem dimming available to 1% and DMX with RDV remote device management dimming to less than 0.1%.

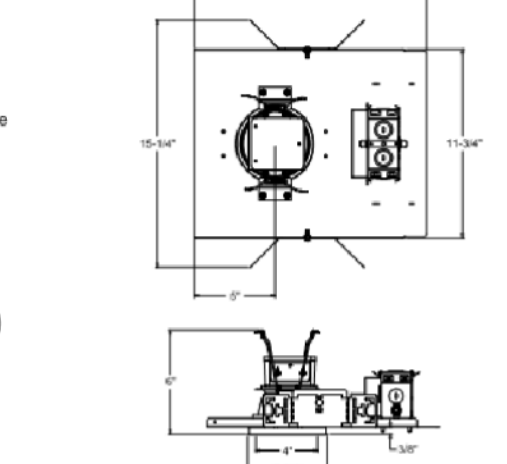
CERTIFICATIONS:
CSA certified to US and Canadian safety standards. Suitable for wet locations. Approved for through wiring. Non-IC rated. EMI is damp rated use only ENERGY STAR qualified with open clear Alzak reflector. UL approved for HES2 splash zone applications.

WARRANTY:
5 year warranty. See www.prescolite.com for details.

DATE: TYPE:
FIRM NAME:
PROJECT:



Maximum Ceiling Thickness 5/8"
For conversion to millimeters, multiply inches by 25.4
Not to Scale



See page 5 for EMBL, CP, LVEI and NXWIE line art

CATALOG NUMBER EXAMPLE: LF4SLDM1-4LFSL1SL3SK8W1

Order housing, reflector, and accessories separately.

HOUSING	DRIVER OPTION	VOLTAGE OPTION	HOUSING OPTION	TRIM APERTURE	KELVIN	REF. FINISH OPTION	REF. COLOR OPTION	REFLECTOR OPTION	ACCESSORIES
<input type="checkbox"/> LF4SL Standard 120V Dimming	<input type="checkbox"/> DM1 0-10V dimming	<input type="checkbox"/> 347 347V	<input type="checkbox"/> EMB Emergency Battery Pack with remote test switch and indicator light	<input type="checkbox"/> 4LSL Semi-elliptical Clear Alzak	<input type="checkbox"/> 27K 2700K	<input type="checkbox"/> Standard Semi-Diffuse	<input type="checkbox"/> Standard Clear Alzak	<input type="checkbox"/> AMF Antistatic coating on clear Alzak reflector only	<input type="checkbox"/> B24 Set of two 24" bar hangers for E-bar ceiling
<input type="checkbox"/> LF4SL 15L 2700K-5000K EcoSystem LED Driver	<input type="checkbox"/> DM1+ SpectroSyst™ Tunable White	<input type="checkbox"/> 480V 480V	<input type="checkbox"/> LV* Lumen View Enabled; 0-10V, 120/277V	<input type="checkbox"/> 11L 1100K	<input type="checkbox"/> 35K 3500K	<input type="checkbox"/> Semi-Specular Gold Alzak	<input type="checkbox"/> Gold Alzak	<input type="checkbox"/> B4* Set of two (2) bar hangers for ceiling post up to 24" centers	<input type="checkbox"/> B4* Inverter, single phase control lighting
<input type="checkbox"/> LF4SL 20L 2700K-500K EcoSystem LED Driver (120V only)	<input type="checkbox"/> DM1W+ SpectroSyst™ Tunable Dim to Warm		<input type="checkbox"/> NXWE* NXE Wireless Enabled	<input type="checkbox"/> 15L 1500K	<input type="checkbox"/> 40K 4000K	<input type="checkbox"/> MFC American Mather™	<input type="checkbox"/> Black Alzak	<input type="checkbox"/> WT Painted White Flange Only	<input type="checkbox"/> LPS Series* Leafwer micro-inverter, 20VA-35VA
	<input type="checkbox"/> DMX* DMX with DMX dimming to <0.1%		<input type="checkbox"/> NXE* NXE Wireless Enabled, Dual SmartPorts	<input type="checkbox"/> 20L* 2000K Lumen Module	<input type="checkbox"/> 2330D* 2300K-3000K SpectroSyst™ Dim to Warm	<input type="checkbox"/> VSS Kraft Mersen SoftShen™	<input type="checkbox"/> Kraft Mersen Alzak	<input type="checkbox"/> WH Painted White Bulbless and Flange	<input type="checkbox"/> BC Painted Black Reflector and Flange
				<input type="checkbox"/> 120 (HDM Only)	<input type="checkbox"/> 2765* 2700K-6500K SpectroSyst™ Tunable White	<input type="checkbox"/> V Kraft Mersen Alzak	<input type="checkbox"/> Kraft Mersen Alzak	<input type="checkbox"/> TRD Trim Ring Gasket	<input type="checkbox"/> LPS Series* Leafwer micro-inverter, 20VA-35VA

Use with HDM/DMX/DMX dimming options: Match Housing to Trim Output

*HDM, 2DM & DMX also available with DMX and VVVV

†DMX, 2DM & DMX also available with DMX and VVVV



In a continuing effort to offer the best product possible we reserve the right to change, without notice, specifications or materials that in our opinion will not alter the function of the product. Web: www.prescolite.com • Tech Support: (888) 777-4832

LF4-LED-029

① FIXTURE TYPE 'R4'
NO SCALE

VoltaUS CONSULTING
2633 E. Indian School Rd., Ste. 210, Phoenix, AZ 85016
Tel. (480) 659-0511, VoltaUS.com

THIS DOCUMENT IS THE PROPERTY OF VOLTAUS CONSULTING. IT IS TO BE USED ONLY FOR THE PROJECT AND SITE SPECIFICALLY IDENTIFIED HEREIN. IT IS NOT TO BE REPRODUCED, COPIED, OR TRANSMITTED IN ANY FORM OR BY ANY MEANS, ELECTRONIC OR MECHANICAL, INCLUDING PHOTOCOPYING, RECORDING, OR BY ANY INFORMATION STORAGE AND RETRIEVAL SYSTEM, WITHOUT THE WRITTEN PERMISSION OF VOLTAUS CONSULTING. VOLTAUS CONSULTING SHALL BE RESPONSIBLE FOR ANY ERRORS OR OMISSIONS.

01/14/19
30536
WILLIAM J. BETHUNE, IV
Professional Engineer (No. 12000)
SEAL EXPIRES: 09/30/20

HOPE CONSTRUCTION
GENERAL CONTRACTING & CONSTRUCTION MANAGEMENT

FLAGSTAFF
TINY HOUSE VILLAGE

1411 N. FOURTH STREET
COCONINO COUNTY, ARIZONA

REVISIONS	DATE	ISSUED FOR PERMIT
1	01/14/19	12/28/18
2		
3		
4		
5		
6		
7		
8		
9		
10		

PROJECT # 808501.00 SCALE: AS NOTED
CHECKED BY: WB DRAWN BY: ETS/HW
DATE: 12/23/18

SITE LIGHTING CUTSHEETS

E 1.2