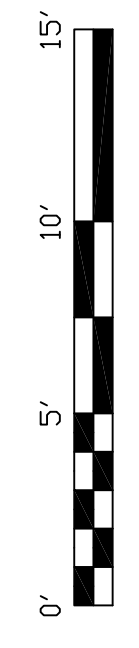
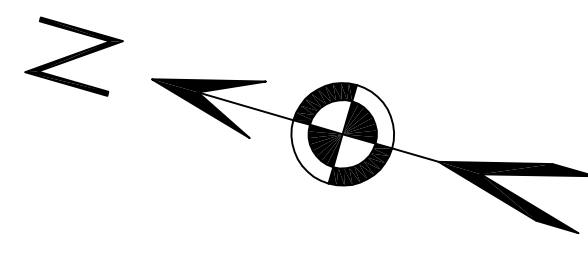
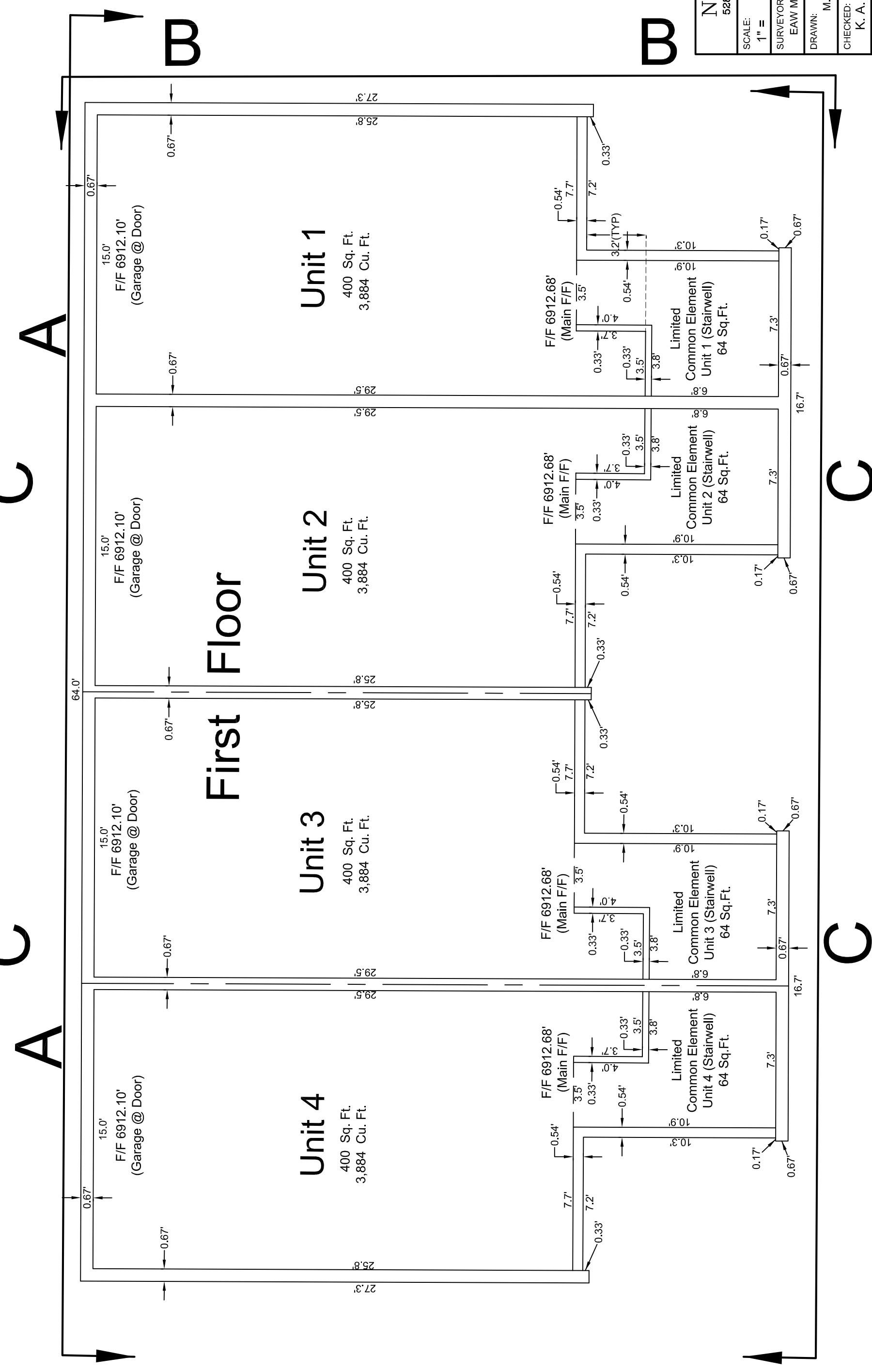
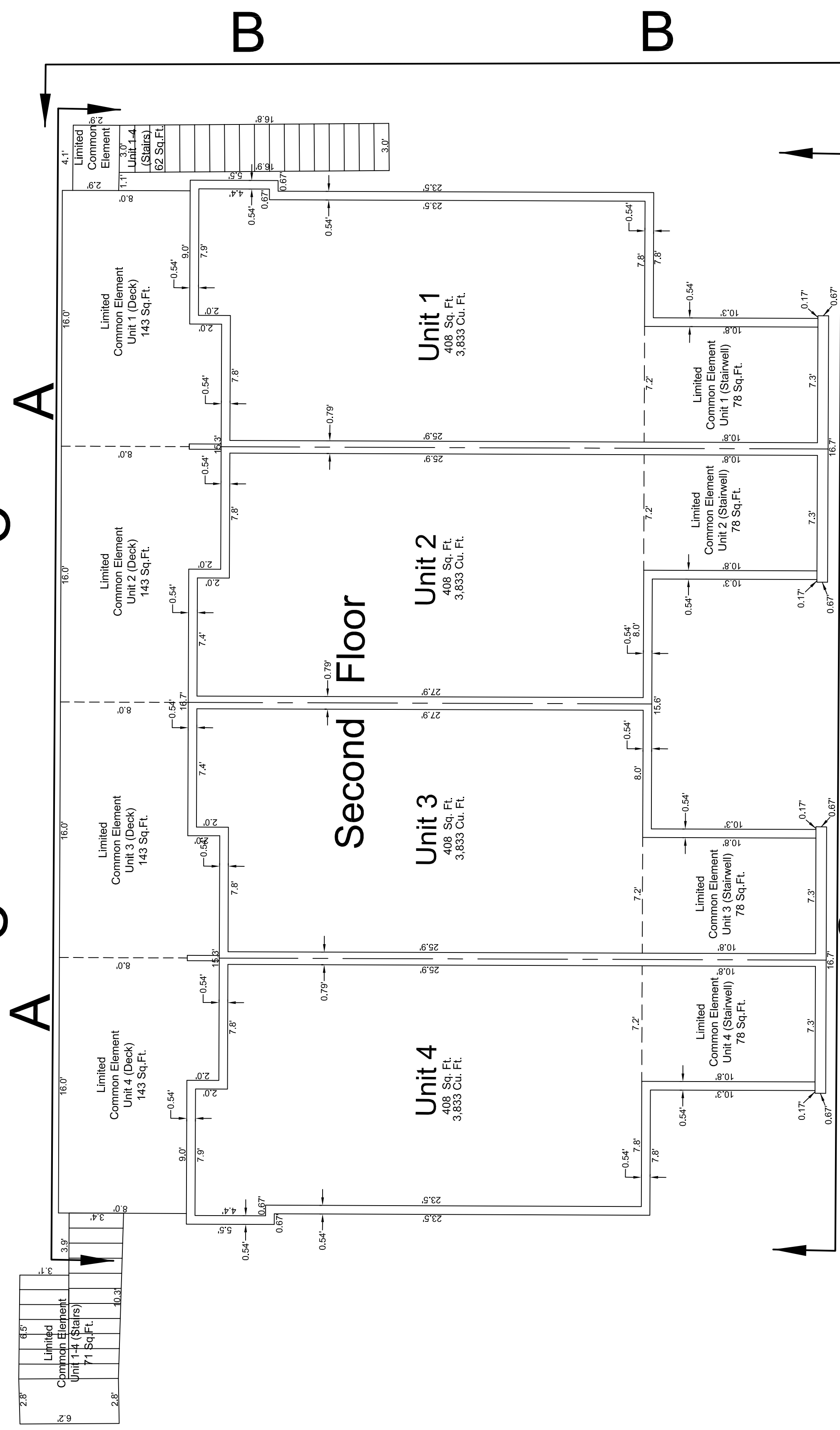
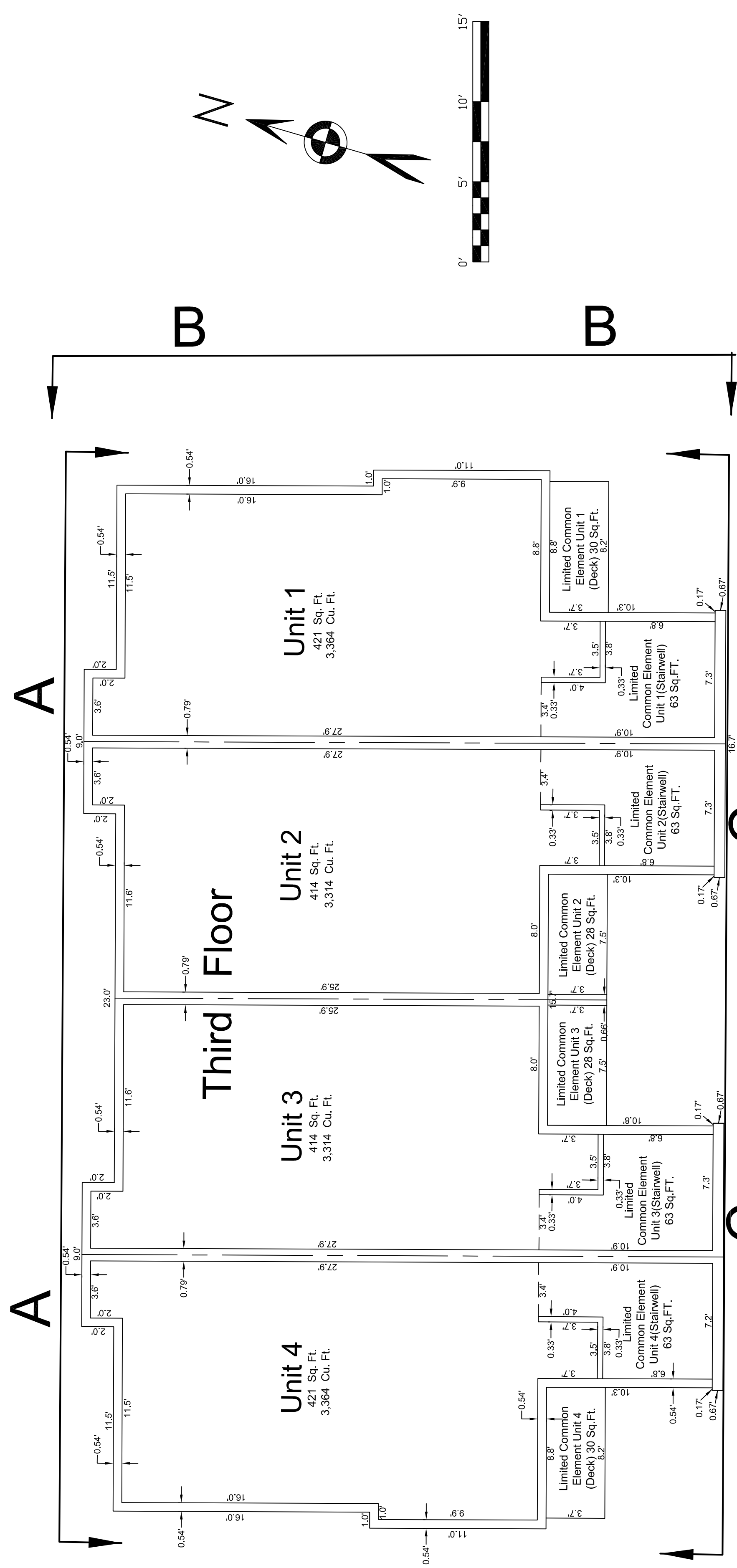


Preliminary Condominium Plat of Flagstaff Lofts

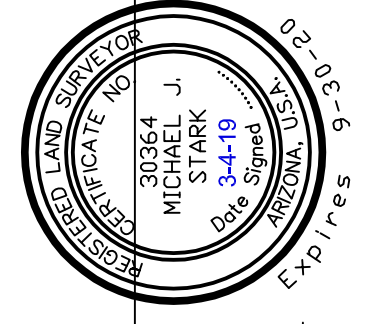
Situated in Section 16, Township 21 North, Range 7 East, Gila and Salt River Meridian, City of Flagstaff, Coconino County, Arizona.



CERTIFICATION:

This is to certify that the survey on which this plat is based was performed directly under my supervision during August and September of 2018, and is true and correct to the best of my knowledge.

Michael J. Surick



Revisions: City of Flagstaff Comments, 12-7-18, M.J.S.
City of Flagstaff Comments, 1-9-19, M.J.S.
City of Flagstaff Comments, 2-1-19, M.J.S.
City of Flagstaff Comments, 2-4-19, M.J.S.

| | |
|--|----------------|
| SCALE | 1" = 5.0' |
| SURVEYOR | EAW MBH-JFW/MS |
| DRAWN | M. J. Surick |
| CHECKED | K. A. Krenke |
| DATE | March 4, 2019 |
| Revisions: City of Flagstaff Comments, 12-7-18, M.J.S. City of Flagstaff Comments, 1-9-19, M.J.S. City of Flagstaff Comments, 2-1-19, M.J.S. City of Flagstaff Comments, 2-4-19, M.J.S. | |
| Northland Exploration Surveys, Inc. 828 West Aspen Avenue, Flagstaff, Arizona 86001 (929) 774-5658 FAX (929) 774-3069 | |
| Preliminary Condominium Plat | |
| SHEET | 4 |
| OF | 12 |
| JOB NO. | 18-067 |
| Situated in Section 16, Township 21 North, Range 7 East, Gila and Salt River Meridian, City of Flagstaff, Coconino County, Arizona. | |
| Flagstaff Lofts | |