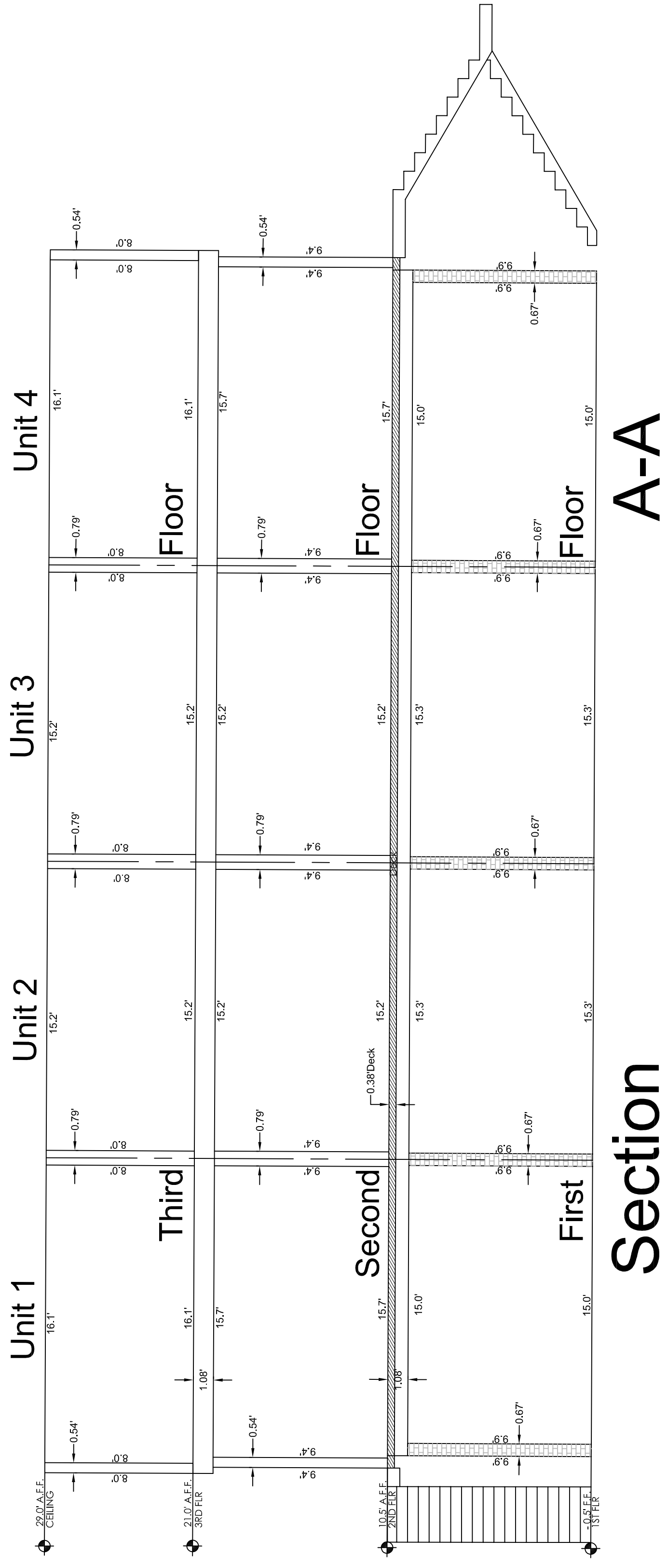
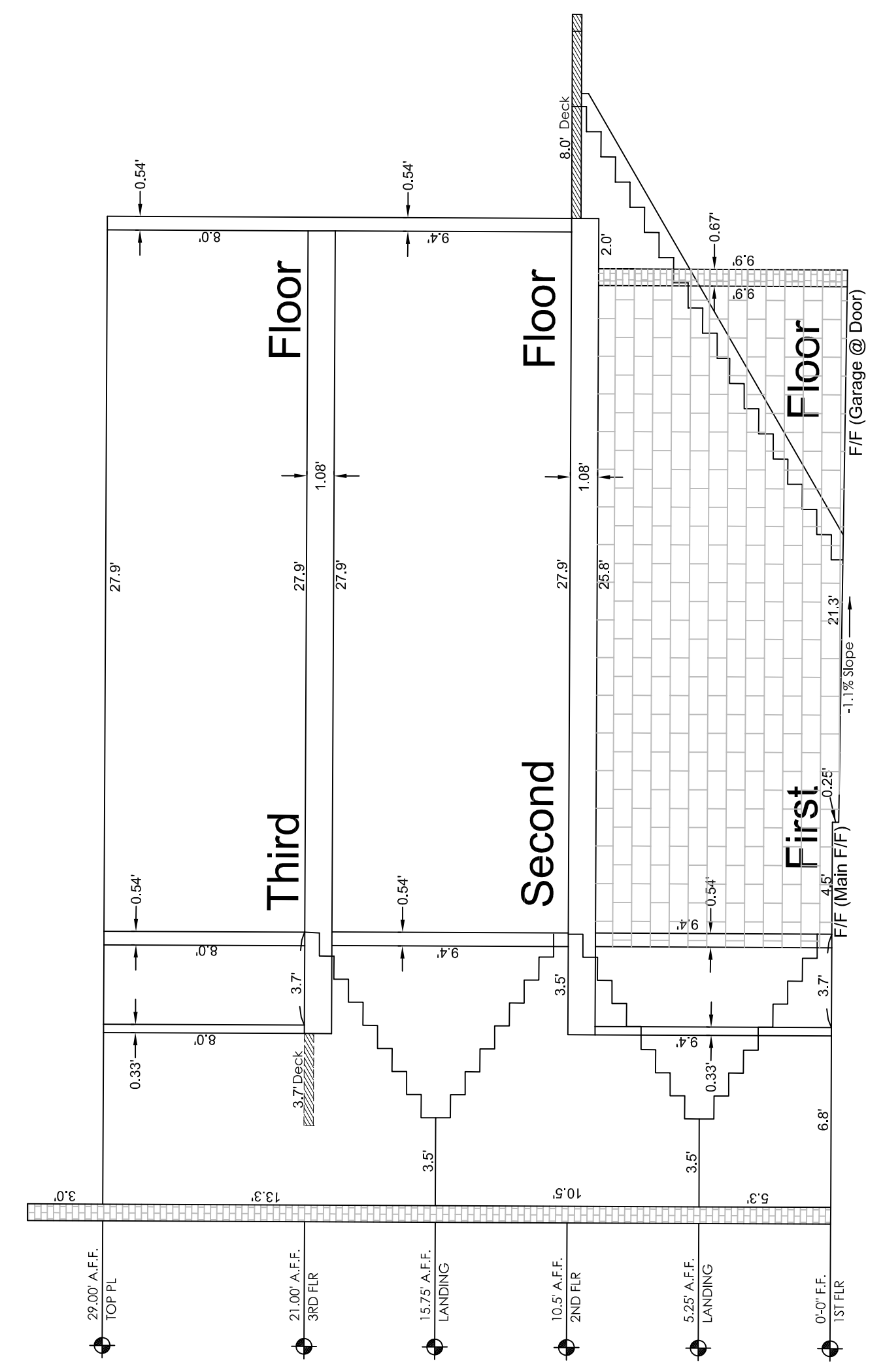


# Preliminary Condominium Plat of Flagstaff Lofts

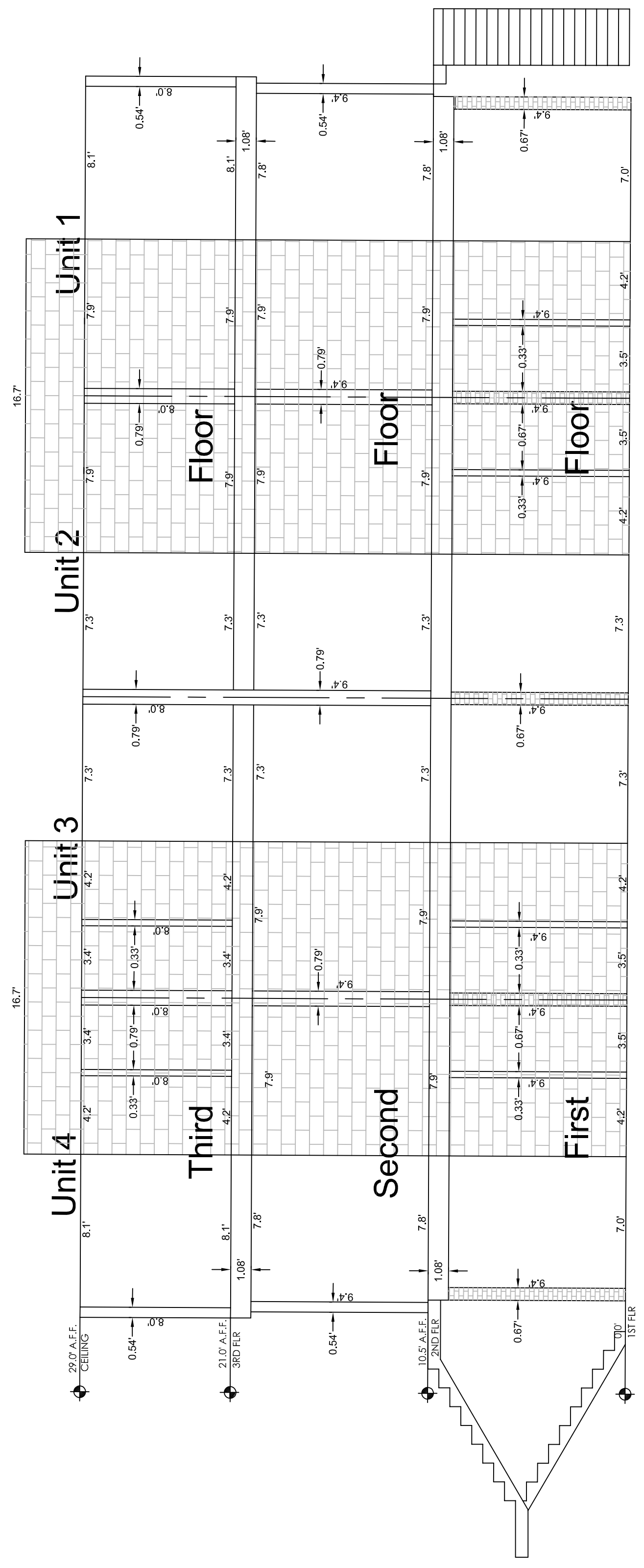
Situated in Section 16, Township 21 North, Range 7 East, Gila and Salt River Meridian, City of Flagstaff, Coconino County, Arizona.



**A-A**

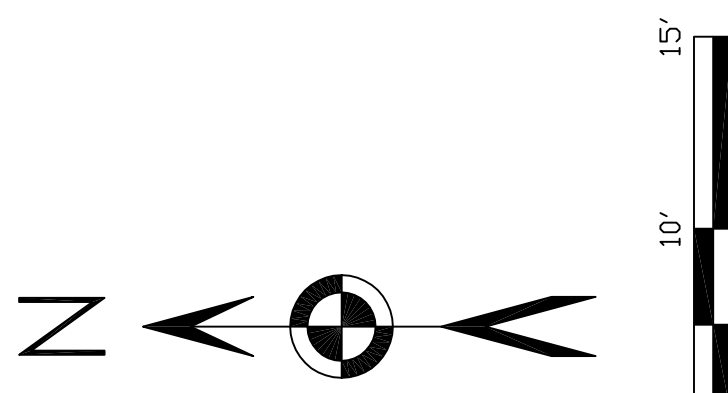


**B-B**



**Section**

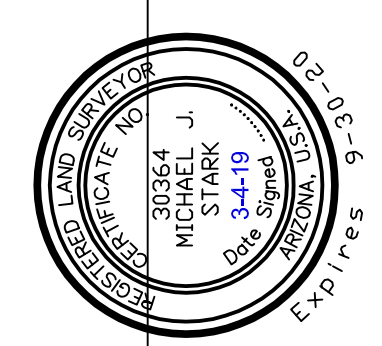
**C-C**



**CERTIFICATION:**

This is to certify that the survey on which this plat is based was performed directly under my supervision and that I am a duly Licensed Professional Land Surveyor in the State of Arizona, and is true and correct to the best of my knowledge.

*Michael H. Harty*



Revisions: City of Flagstaff Comments, 12-7-18, M.J.S.  
City of Flagstaff Comments, 1-9-19, M.J.S.  
City of Flagstaff Comments, 2-1-19, M.J.S.  
City of Flagstaff Comments, 3-4-19, M.J.S.

Northland Exploration Surveys, Inc. 528 West Aspen Avenue, Flagstaff, Arizona 86001 (929) 774-5658 FAX (929) 774-3069	
SCALE: 1" = 5.0'	SHEET 5 OF 12
SURVEYOR: EAW MBH-JFW/MJS	JOB NO. 18-067
DRAWN: M.J. Shuk	
CHECKED: K. A. Krenke	
DATE: March 4, 2019	

Preliminary Condominium Plat  
of  
**Flagstaff Lofts**  
Situated in Section 16, Township 21 North, Range 7 East, Gila and Salt River Meridian, City of Flagstaff, Coconino County, Arizona.