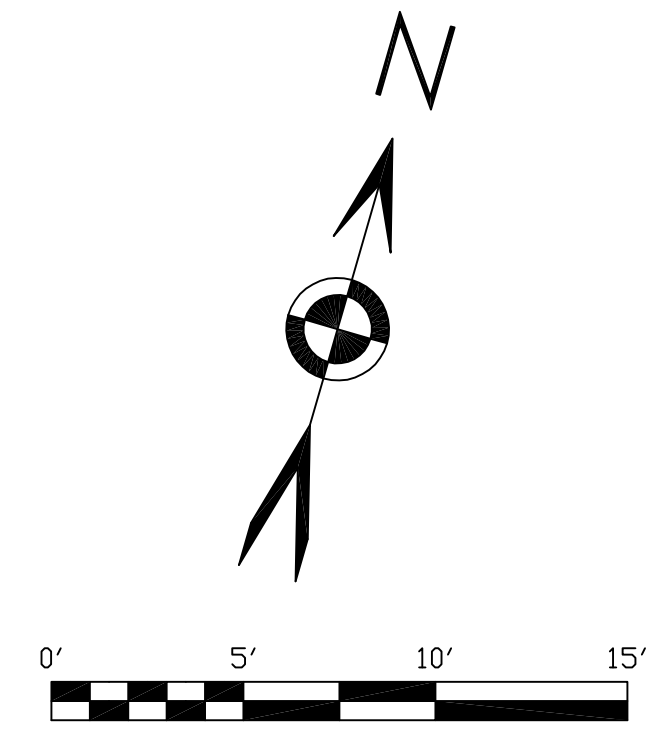
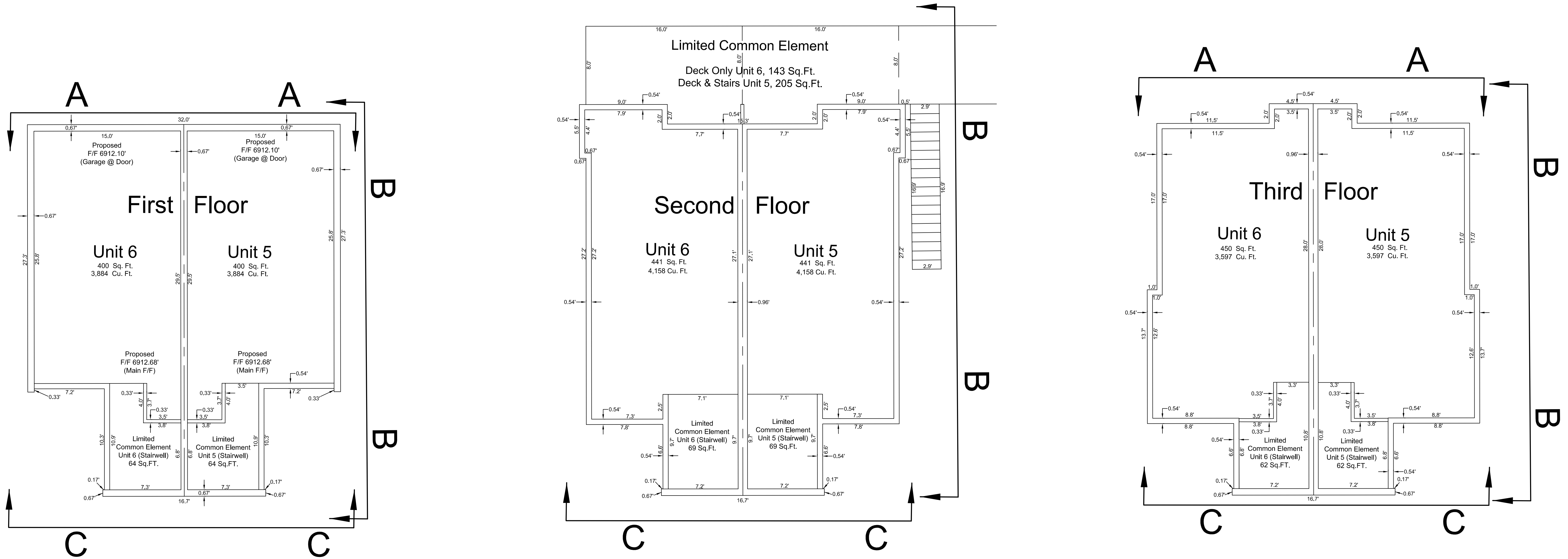


Preliminary Condominium Plat of Flagstaff Lofts

Situated in Section 16, Township 21 North, Range 7 East, Gila and Salt River Meridian, City of Flagstaff, Coconino County, Arizona.



CERTIFICATION:

This is to certify that the survey on which this plat is based was performed directly under my supervision during August and September of 2018, and is true and correct to the best of my knowledge.

Michael J. Stark

 30364
 MICHAEL J. STARK
 3-4-19
 State of Arizona
 Expires 9-30-20

Revisions: City of Flagstaff Comments, 12-7-18, M.J.S.
 City of Flagstaff Comments, 1-9-19, M.J.S.
 City of Flagstaff Comments, 2-6-19, M.J.S.
 City of Flagstaff Comments, 3-4-19, M.J.S.

Northland Exploration Surveys, Inc. 528 West Aspen Avenue, Flagstaff, Arizona 86001 (928) 774-5058 FAX (928) 774-3089		SHEET 6 OF 12
SCALE: 1" = 5.0'	Preliminary Condominium Plat of Flagstaff Lofts	JOB NO. 18-067
SURVEYOR: MBH EAW JFW MJS		
DRAWN: M. J. Stark		
CHECKED: K. A. KRENKE		
DATE: March 4, 2018	Situated in Section 16, Township 21 North, Range 7 East, Gila and Salt River Meridian, City of Flagstaff, Coconino County, Arizona.	