



AMENDMENT TWO

City of Flagstaff Court Facility Design-Build Contract

Construction Services Phase – GMP 2

Project No. 03-18007
Contract No. 2018-63

This Second Amendment (“Amendment”) to the fully executed Design-Build Services Contract No. 2018-63 dated 7/17/18 (the “Agreement”) for the City of Flagstaff Court Facility (the “Project”) is made and entered into this ____ day of _____, 2019, by and between the City of Flagstaff, an Arizona municipal corporation with offices at 211 West Aspen Avenue, Flagstaff, Arizona 86001, and Kinney Construction Services, Inc., an Arizona corporation with offices at 121 E. Birch Avenue, Flagstaff, Arizona 86001.

The parties to the Agreement for City of Flagstaff Court Facility project, the City of Flagstaff and Kinney Construction Service, Inc., hereby agree to the following amendment; all other provisions of the Agreement shall remain unchanged in full force and effect. New text is underlined.

ARTICLE 5 – CONTRACT PRICE

5.3 – GMP

Design-Builder’s GMP 2 for the construction phase services for the Phase 2 portion of (Construction) work of the Project shall be **fifteen million, five hundred fifty-seven thousand, and ninety-four dollars (\$15,557,094)**. The GMP shall be for the complete performance of Phase 2 portion of work in accordance with the Contract Documents and exhibits listed below, which are part of this Amendment, and which shall be incorporated into the Agreement by this Second Amendment as if fully set forth therein.

EXHIBIT A – GMP 2 Summary Sheet, dated 4/24/2019, 1 page(s).

EXHIBIT B – Basis of GMP 2 (Allowances, Assumptions and Clarifications on which the GMP is based), dated 4/23/19, 9 page(s).

EXHIBIT C – Enumeration of Drawings and Specifications, including Addenda, if any, on which the GMP is based, 5 page(s).

EXHIBIT D – Baseline Project Schedule, 1 page(s).

The total Contract Price under the Agreement, as amended by this Amendment, shall be **eighteen million, six hundred and sixty-eight thousand, eight hundred and ninety-seven dollars (\$18,668,897)**.

ARTICLE 6 – CHANGES TO CONTRACT PRICE AND TIME

The Scheduled Date of Completion of the work for the City of Flagstaff Court Facility project under this First Amendment is an additional **329 calendar days from the Notice to Proceed with a substantial completion date of 7/20/2020.**

IN WITNESS WHEREOF, the parties have caused this Amendment to be executed by their duly authorized representatives as of the date first written above. This Amendment will be in full force and effect only when it has been approved and executed by the duly authorized City officials.

(Please sign in blue ink. Submit original signatures – photocopies not accepted)

City of Flagstaff

Kinney Construction Services, Inc.

By: _____

By: _____

–
Barbara Goodrich, City Manager

–

Title: _____

Dated: _____

Dated: _____

Attest:

City Clerk

Approved as to form:

City Attorney

PROJECT GMP PROPOSAL SUMMARY SHEET

COF Courts - Phase 2 GMP - Exhibit A

4/24/2019

ITEM NO.	BUILDING/CONSTRUCTION TYPE		TOTALS
	PROFESSIONAL SERVICES		
1	Professional Services		
2	Reimbursables		
3	Construction Administration (Architect & Engineers)		\$247,130.00
	Total Professional Services		\$247,130.00
	CONSTRUCTION		
4	<i>Cost of Construction</i>		
5	Concrete		\$565,394.00
6	Masonry		\$2,042,717.00
7	Steel Structure & Fabrications		\$1,193,740.00
8	Millwork & Misc Blocking		\$525,000.00
9	Roofing, Insulation, & Joint Sealants		\$456,499.00
10	Doors, Windows, & Glazing		\$698,913.00
11	Finishes (Flooring, Paint, Stucco, Gypsum Assemblies, & ACT)		\$1,930,500.00
12	Specialties (Signage, Appliances, Restroom Accessories, & Flagpoles)		\$189,000.00
13	Furniture & Window Coverings		\$150,000.00
14	Elevators		\$337,840.00
15	Fire Suppression & Alarm		\$195,000.00
16	Plumbing		\$363,000.00
17	Mechanical		\$1,200,000.00
18	Electrical		\$1,092,000.00
19	Low Voltage Systems		\$500,000.00
20	Exterior Improvements & Remaining Sitework		\$88,000.00
21	Landscaping & Irrigation		\$30,000.00
	Subtotal of Construction & Professional Services		\$11,804,733.00
22	Design-Builder's Contingency	4.00%	\$472,189.00
	Indirect Costs	Rate	
23	General Conditions	7.87%	\$966,768.00
24	Payment & Performance Bond	1.50%	\$198,655.00
25	Insurance	1.20%	\$161,308.00
26	Construction Fee	7.00%	\$952,256.00
27	Sales Taxes	5.82%	\$847,154.00
	Total Construction & Professional Services Cost - GMP 2		\$15,403,063.00
28	Owner's Contingency (1%)		\$154,031.00
	Grand Total (w/ owner contingency)		\$15,557,094.00

EXHIBIT 'B'
Statement of Clarifications and Assumptions
COF Courts Facility – Phase 2 GMP
4.23.2019

Purpose & Intent

The intent of the qualifications is to provide a supplement scope design and cost control guide. They are included to further the “Teams” understanding of what is included in the scope of this project based on Kinney Construction Services’ interpretation of the design intent.

Since cost control is largely the result of scope control, we have clarified and elaborated based on this proposal for areas where systems were incomplete or anticipated to be revised, and where scope was unclear.

Basis of Qualifications

Documents as outlined in Exhibit C – Enumeration of Drawings

General Clarifications

1. Pricing is based on an approximate 15 month total duration starting April 1st, 2019. Phase 2 GMP only includes a portion of this schedule for the scope of work outlined below and in Exhibit A with a duration of 41 weeks total.
2. A payment and performance bond for Kinney Construction Services, Inc. is included.
3. Any costs associated with a building permit or reviews are not included. Permits and fees required by City of Flagstaff (COF) are to be paid for by the owner including all water and sewer impact feeds.
4. All temporary utility consumption costs are assumed to be by the Owner and are therefore not included.
5. Costs for preconstruction and design services are not included as part of this GMP.
6. Material testing and special inspections are not included. COF to procure & provide all special inspections. Contractor to coordinate with COF and 3rd Party Testing representative to schedule required testing and inspection during construction.
7. A (1) one-year warranty from date of substantial completion has been included.
8. All work is intended on being performed during normal business hours, Monday thru Friday.
9. KCS has registered this project with GreenGlobes with the intent of reaching 3 Globes certification. KCS will provide necessary documentation to achieve this certification.
10. All work will abide by MAG specs with COF modifications as required.
11. KCS reserves the right to work with CGL, it’s consultants, and city staff to amend drawings and specifications as necessary in order to meet budgetary constraints.

General Conditions

- KCS will provide adequate project management, supervision, tools, equipment, waste management containers and temporary construction facilities for the duration of this project.
- A temporary construction office will be provided at the site or adjacent laydown area. KCS intends on leasing the property across the street from FSL for the duration of the project for contractor parking and laydown.
- All necessary project documentation will be maintained from project start to closeout including paper / electronic copies of all plan iterations, ASIs, submittals, RFIs, weekly reports, meeting minutes, and safety logs. KCS intends on using Procore Construction Management Software as a tool to assist with this documentation management. COF staff will have access to this web-based software as well.
- KCS will provide protection of existing site and necessary traffic and pedestrian signage and control. A temporary chainlink fence with screening will be installed around the entire property including the sidewalks, but will not be installed in the street impeding traffic. Sidewalks will be closed and proper signage will be placed at the nearest adjacent intersection directing pedestrian traffic to open walkways.

Foundations, Structural Concrete, & Miscellaneous Concrete

- All materials and equipment necessary to construct the concrete footings, concrete stem walls, concrete slab on grade, concrete over steel decking, concrete stairs and landings, concrete ramps, vapor barrier, and all concrete reinforcing.
- All materials and equipment to construct concrete interior stair pans and landings.
- Includes elevator pits and associated waterproofing.
- Includes vapor barrier below slab on grade including termite pre-treat.
- Includes all backfill and excavation including subgrade prep and ABC.
- Includes all miscellaneous bolts and anchors including all form work.
- Includes all equipment pads.
- Does not include colored concrete, concrete stamping, or concrete banding.
- Does not include concrete slurry or hard digging.
- Does not include winter protection.
- Excludes shoring of any kind.
- Excludes below grade foundation wall waterproofing other than for the elevator pits.

Structural Steel

- All materials and equipment necessary to construct all structural steel and miscellaneous steel including all anchor bolts, templates, embeds, wide flanges beams, interior stairs and railing, stair riser perforated metal and stair nosings, steel joists, steel decking, elevator hoist beams, elevator pit ladders, exterior roof access ladder, concrete ramp and stair rails, miscellaneous roof framing for penetrations, trash enclosure gates, cross bracing, pipe bollards, and roof screen wall.
- Includes steel shop drawings and detailing.
- Includes all sally port steel including canopy.
- Includes all dumpster enclosure gates.
- All steel to be coated with one coat of shop primer.
- All steel railing to be standard steel railing to be painted. No stainless steel railing has been included.
- Interior stair railing to include standard steel guardrail and hand rail. No specialty mesh or trim pieces have been included.
- Roof screen wall to be standard screen wall no special trim has been included.
- Standard MAG type concrete filled, top mounded, painted bollards have been included.

Structural Masonry & Brick/Stone Veneer

- All materials and equipment necessary to install all modular brick and brick veneer including all grout and associated attachments.
- All materials and equipment necessary to install all stone veneer including all grout and associated attachments. Stone to be Sedona Red Sandstone and sourced locally.
- All materials and equipment necessary to install all structural CMU shaft walls and exterior CMU site walls.
- Includes standard ladder wire instead of heavy duty specified wire.
- Includes all steel rebar reinforcing associated with this work.
- Includes all precast stone caps at secure parking pilasters.
- Includes all drypacking at structural steel.
- Includes mortar trap at base and shelf angles instead of full wall mortarvent CW.
- Includes lighter colored brick at all building exterior banding instead of cast stone. Lintels and sills to be cast stone.
- Includes all caulking of masonry joints where called out on the plans.
- Includes all exterior enclosure brick and stone sealer.
- Excludes cold weather protection.
- Arched brick pattern at windows to be formed using standard bricks, not specialty brick forms.
- Interview room walls have been included as framed drywall walls not as CMU.
- Excludes any anti-graffiti coating.

Metal Stud Framing, Drywall, & Exterior Sheathing

- All materials and equipment necessary to install all interior and exterior metal stud framing, drywall, and dens glass sheathing.
- Cold formed metal steel studs includes all 16 ga. framing at exterior walls, 18 ga. framing at parapet soffits and furring, and 20 ga. framing at all interior walls and ceilings. Includes all framing at openings as required.
- Includes all masonry wall and steel column furring and drywall.
- Includes standard bridging at all exterior. No cross bracing or strapping included.
- Includes all in-wall blocking and backing for surface mounted accessories and monitors.
- Includes all drywall suspended ceilings and soffits.
- Cornices and soffits have been simplified in order to reduce framing.
- Includes all 5/8" type X gypsum interior drywall throughout and moisture resistant drywall at all wet walls.
- Includes 5/8" dens glass sheathing at all exterior framing.
- Includes moisture resistant gyp board at walls behind ceramic wall tile.
- All materials and equipment necessary to install all exterior dense glass sheathing.
- Includes ballistic board in court rooms where shown on plans and 3/4" non-rated CDX plywood at security walls, 5C walls, and security ceilings.
- Assumes square corner bead throughout.
- Assumes top and bottom sound caulking at sound walls and top and bottom fire caulking at 1 hr rated fire walls.
- Assumes that interior finish in public areas is to be level 4 and back of house areas to be level 3 or fire taped.
- Includes all control joints in walls at runs longer than 30 feet. Locations to be determined by architect.

Interior & Exterior Insulation, Roofing, Joint Sealants, & Moisture Barrier

- All materials and equipment necessary to install all interior and exterior in-wall insulation. Includes R-19 unfaced batt insulation at exterior walls and R-11 unfaced batt insulation at interior walls as noted on the drawings.
- All materials and equipment necessary to install all exterior rigid insulation and roll on exterior wall moisture barrier as noted on the drawings.
- All materials and equipment necessary to install all single ply roofing system; final manufacturer to be determined.
- Includes all roof drains and tie-ins.
- Includes all roof parapet caps and walk pads.
- Includes all joint sealants including masonry control joints, exterior concrete building joints.
- Includes all fire stopping for all MEP trades.

Millwork

- All materials and equipment necessary to construct the interior millwork and trim.
- Includes all courtroom millwork and trim including wood framed walls and platforms. Courtroom wood framing and plywood included as non-engineered.
- Includes all plastic laminate upper and lower cabinetry and solid surface counter tops.
- Includes courtroom seal and finished wood steps up to judges platform.
- Includes simplification of the courtroom millwork scope and details.
- Includes all acoustic panels in courtrooms, surface mounted to drywall finished surface. No recessed niches or specialty trim have been included.
- Includes FRP at janitor's closets.
- All materials and equipment necessary to construct the courtroom pews and benches.
- Benches and pews included as straight back, open end, veneer maple finish with a plywood core.
- Millwork areas include the following: custody courtroom, mail/copy room, public counters, collection and queuing, public terminals counter, staff breakrooms, security room, lobby security screening, service area, standard courtroom, prosecutor counter, hearing room, interview rooms, trim at courtroom doorways, and public restrooms.
- All plastic laminate cabinet interior to be white melamine over particle board. Moisture resistant particle board not included.

Storefront & Glazing

- All materials and equipment necessary to construct the exterior storefront and glazing systems including all storefront style punch windows. Includes exterior entrance into the lobby and interior lobby storefront system at the first and second floor.
- All materials and equipment necessary to construct the interior storefront and glass openings including doors. Areas include the following: collection and queuing, interview rooms, prosecutor, and public counters. Includes all polycarbonate glass.
- Includes all door glass lites. No fire glass has been included.
- Interior vestibule has not been included.

Stucco

- All materials and equipment necessary to construct the exterior stucco/EIFS flat infill panels including cornices.
- Includes all substrate materials for stucco/EIFS assembly. Includes all lath, moisture barrier, and rigid insulation.
- Includes a base coat and fine sand integral color finish coat.
- Includes all moisture drainage trim as necessary.
- Includes all cornice framing and foam pieces; includes simplification of stucco cornice.

Painting

- All materials and equipment necessary to furnish and install all interior & exterior paint.
- Includes paint at all drywall surfaces including walls, soffits, and ceilings.
- Includes paint at all hollow metal doors and door frames.
- Includes paint at exterior hollow metal door frames and doors.
- Includes paint at exterior metal handrail, canopy, gates, and roof screen wall.
- Includes stair well stringers, stair pans, stair guardrail, and stair handrail.
- Includes one prime coat and 2 finish coats.
- All materials and equipment necessary to furnish and install all exterior brick and stone clear waterproofing sealer.
- Includes paint at exterior soffits.

Flooring & ACT Ceilings

- All materials and equipment necessary to furnish and install all carpet, ceramic floor and wall tile, stained and sealed concrete.
- Includes all rubber cove base and rubber carpet transitions.
- Includes all tile base and Schluter metal door way transitions.
- Assumes epoxy grout for all ceramic tile.
- Includes walk-off mat.
- Includes all nosings and accessories for adjacent different flooring materials.
- All materials and equipment to furnish and install all grid ceilings.
- Includes heavy duty suspension system.
- Includes simplification of Act ceiling systems to create similar intent with standard products.

Doors & Hardware

- All materials and equipment necessary to furnish and install all doors, frames, and hardware.
- Includes all wood factory pre-finished rotary white birch doors with a finished top edge.
- Includes all hollow metal frames and doors. All hollow metal frames to be 16 ga. and hollow metal heavy duty doors to be 16 ga. & standard hollow metal doors to be 18 ga.
- Includes all door hardware including electrified hardware. Includes standard selection of finishes.
- Cores to be Best cores and are included.
- Includes all detention-grade doors, frames and hardware. Final grade to be determined.
- Includes all detention security glass.
- Includes accommodations for all access control.
- Includes all sally port roll up doors and associated hardware.

Conveying Systems

- All materials and equipment necessary to furnish and install 3 machine room-less elevators of the following sizes: 3,500 lb inmate, 2,500 lb staff, and 4,000 lb public.

Mechanical

- All materials and equipment necessary to furnish and install all HVAC roof top units, interior equipment, ducting, insulation, mini split air conditioners, insulated flex runs, copper refrigerant lines, condensate piping, fire and smoke dampers, diffusers and louvers, and HVAC trim.
- Includes energy management system including controls.
- Includes 3rd party test and balance.

Plumbing

- All materials and equipment necessary to furnish and install all plumbing domestic water piping and valves, water piping insulation, interior waste piping, plumbing fixtures, roof drains including heat tape, sump pumps and associated piping at elevator pits, water heaters, recirculation pumps, backflow preventors, gas piping at interior, and roof drains including heat tape. Final fixture selection to be determined.

Electrical

- All materials and equipment necessary to furnish and install all light fixtures including controls, receptacles, outlets, conduit, wiring, feeders, gear, electrical panels, emergency lighting, occupancy sensors, exterior site light fixtures, generator, electrical trim, and snow melt system.
- Includes all power supply to HVAC and plumbing equipment.
- Includes all power to elevators.
- Includes all power to electrified door hardware including sally port roll up doors and secure parking area gates.
- Includes complete lighting control package.
- Includes commissioning and final test and balance.
- Lightning protection systems not included.

Fire Protection

- All materials and equipment necessary to furnish and install complete wet pipe fire sprinkler system and wet automatic standpipe system.
- Includes all pipe, sprinkler heads, pull boxes, riser, trim, and accessories for a complete system.
- Includes engineered shop drawings to be submitted to the City of Flagstaff for review.
- Excludes dry system or exterior fire sprinkler piping.

Fire Alarm

- All materials and equipment necessary to furnish and install complete fire alarm system including all conduit, wire, devices, control panel, and trim for a complete system.
- Includes engineered shop drawings to be submitted to the City of Flagstaff for review.
- Includes annunciator, smoke detectors, fire alarm control panel, boosters, pull stations, audio/visual and visual devices, elevator recalls, monitor modules for sprinkler system, and final testing and balance.

Communications, Data, Security, & A/V

- All materials and equipment necessary to furnish and install all communications, data, security, and A/V.
- Includes all low voltage cable tray, conduit, and pathway.
- Includes all data and communications cabling. Cabling to be Cat6 cable. Excludes Cat 6A cable.
- Includes IT equipment and rack.
- Includes data devices and trim.
- Includes A/V mixers, amps, microphone receivers, cabling, controls, switches, and trim.
- Excludes microphones and signature pads.
- Includes all card readers and access control hardware and wiring.
- Includes all courtroom monitors.

Landscaping & Irrigation

- All materials and equipment necessary to furnish and install all landscaping and automatic drip irrigation system.
- Includes all site pavers and table mesa brown gravel.
- Includes all site plantings and soil amendments including mulch and ground cover.
- Includes all trees (with tree grates at ROW) and shrubs.
- Includes all irrigation piping, controller, backflow preventer, control valve, controller device, and emitters.

Exterior Ornamental Fencing & Gates

- All materials and equipment necessary to furnish and install all ornamental tube fencing, sally port ornamental fencing including fencing at outdoor entry from sally port, secure parking area automated gates with card reader access, secure parking area ornamental fencing, and 2 ornamental fencing style man gates.
- Fence color and style to be standard options offered by manufacturer.

Specialties, Signage, & Restroom Accessories

- All materials and equipment necessary to furnish and install all site amenities such as bike racks, exterior benches, and flagpoles.
- All materials and equipment necessary to furnish and install one non-illuminated clock at the clock tower.
- All materials and equipment necessary to furnish and install all restroom accessories and partitions. Partitions to be phenolic overhead braced.
- Accessories include grab bars, toilet paper dispenser, seat cover dispenser, napkin disposal unit, channel frame standard mirror, manual soap dispenser, paper towel and waste disposal combination unit, mop holder, and restroom code signage.
- All materials and equipment necessary to furnish and install all fire extinguishers and cabinets.
- Includes dedication plaque at exterior of building.
- Includes interior and exterior flagpoles.
- All materials and equipment necessary to install all refrigerators, dishwasher, garbage disposals, standard break room fridge, and microwave.
- Includes all interior room identification signage and exterior non-illuminated building signage.

Exclusions

- Electrical Power Consumption Costs – KCS has included hook-up of temp power, but the assumption is that the meter will be in COF name and costs for electricity consumption will be by owner.
- 3rd Party Testing – assume costs by owner. KCS to coordinate inspections and providing copies of reports as necessary.
- Parking Lot improvements at existing site – will be part of GMP 3.
- ADA parking requirements outside of staff parking areas – will be part of GMP 3.
- Fiber & Conduit Installation outside of building including run to City Hall – will be part of GMP 3.
- Utility Impact Fees
- Site security

Exhibit C - Enumeration of Documents
COF Courts - Phase 2 GMP

Number	Title	Date
G-00	COVER SHEET-2	1.4.2019
D-101	DEMOLITION PLAN	1.4.2019
AS-100	SITE PLAN	1.4.2019
G-1.0	FIRE/LIFE SAFETY SITE PLAN	1.4.2019
G-1.1	BUILDING CODE ANALYSIS PLAN-FIRST FLOOR	1.4.2019
G-1.2	BUILDING CODE ANALYSIS PLAN-SECOND FLOOR	1.4.2019
G-1.3	BUILDING CODE ANALYSIS PLAN-THIRD FLOOR	1.4.2019
CVR	COVER SHEET	4.1.2019
GN01	GENERAL NOTES	4.1.2020
DT01	CIVIL DETAILS	4.1.2021
DM01	DEMO PLAN	4.1.2022
IPO1	CIVIL IMPROVEMENT PLAN	4.1.2023
GD01	GRADING AND DRAINAGE PLAN	4.1.2024
HC01	HORIZONTAL CONTROL PLAN	4.1.2025
EC01	EROSION CONTROL PLAN	4.1.2026
EC02	EROSION CONTROL PLAN NOTES AND DETAILS	4.1.2027
10	LANDSCAPE PLAN	2.7.2019
11	LANDSCAPE PLAN	2.7.2019
12	LANDSCAPE PLAN	2.7.2019
A-111	FLOOR PLAN - LEVEL 1	1.4.2019
A-112	FLOOR PLAN - LEVEL 2	1.4.2019
A-113	FLOOR PLAN - LEVEL 3	1.4.2019
A-114	FLOOR PLAN - ROOF PLAN	1.4.2019
A-121	REFLECTED CEILING PLAN - LEVEL 1	1.4.2019
A-122	REFLECTED CEILING PLAN - LEVEL 2	1.4.2019
A-123	REFLECTED CEILING PLAN - LEVEL 3	1.4.2019
A-221	ELEVATIONS - EXTERIOR	1.4.2019
A-222	ELEVATIONS - EXTERIOR	1.4.2019
A-311	BUILDING SECTIONS	1.4.2019
A-401	EXTERIOR WALL SECTIONS	1.4.2019
A-402	EXTERIOR WALL SECTIONS	1.4.2019
A-403	EXTERIOR WALL SECTIONS	1.4.2019
A-404	EXTERIOR WALL SECTIONS	1.4.2019
A-405	EXTERIOR WALL SECTIONS	1.4.2019
A-406	EXTERIOR WALL SECTIONS	1.4.2019
A-407	EXTERIOR WALL SECTIONS	1.4.2019
A-408	EXTERIOR WALL SECTIONS	1.4.2019
A-409	EXTERIOR WALL SECTIONS - DETAILS	1.4.2019
A-410	EXTERIOR WALL SECTIONS - DETAILS	1.4.2019
A-411	EXTERIOR WALL SECTIONS - DETAILS	1.4.2019
A-412	EXTERIOR WALL SECTIONS - DETAILS	1.4.2019
A-413	EXTERIOR WALL SECTIONS - DETAILS	1.4.2019

Exhibit C - Enumeration of Documents
COF Courts - Phase 2 GMP

A-421	ENLARGED TOILET PLANS AND ELEVATIONS	1.4.2019
A-422	ENLARGED TOILET PLANS AND ELEVATIONS	1.4.2019
A-423	ENLARGED TOILET PLANS AND ELEVATIONS	1.4.2019
A-431	COURTROOM ENLARGED AND REFLECTED CEILING PLAN	1.4.2019
A-432	COURTROOM ENLARGED AND REFLECTED CEILING PLAN	1.4.2019
A-433	COURTROOM ELEVATIONS	1.4.2019
A-434	COURTROOM ELEVATIONS	1.4.2019
A-435	PUBLIC CORRIDOR ELEVATIONS	1.4.2019
A-441	PUBLIC STAIR 1 ENLARGED PLANS AND DETAILS	1.4.2019
A-442	PUBLIC STAIR 2 ENLARGED PLANS AND DETAILS	1.4.2019
A-443	PUBLIC STAIR ENLARGED PLANS AND DETAILS	1.4.2019
A-451	VERTICAL CIRCULATION ENLARGED PLANS AND SECTIONS	1.4.2019
A-452	VERTICAL CIRCULATION ENLARGED PLANS AND SECTIONS	1.4.2019
A-501	EXTERIOR DETAILS - SIGNAGE PLAN	1.4.2019
A-502	EXTERIOR DETAILS - SITE	1.4.2019
A-503	EXTERIOR DETAILS - SALLYPORT	1.4.2019
A-504	EXTERIOR DETAILS - RAMPS/STAIRS	1.4.2019
A-505	EXTERIOR DETAILS - GLAZING	1.4.2019
A-506	EXTERIOR DETAILS - MISC	1.4.2019
A-511	INTERIOR GLAZING	1.4.2019
A-521	INTERIOR PARTITION TYPES AND DETAILS	1.4.2019
A-531	MISCELLANEOUS MILLWORK PLANS AND ELEVATIONS	1.4.2019
A-532	MISCELLANEOUS MILLWORK PLANS AND ELEVATIONS	1.4.2019
A-533	MISCELLANEOUS MILLWORK PLANS AND ELEVATIONS	1.4.2019
A-534	MISCELLANEOUS MILLWORK PLANS AND ELEVATIONS	1.4.2019
A-541	COURTROOM MILLWORK PLANS AND ELEVATIONS	1.4.2019
A-542	COURTROOM MILLWORK PLANS AND ELEVATIONS	1.4.2019
A-543	COURTROOM MILLWORK PLANS AND ELEVATIONS	1.4.2019
A-544	COURTROOM MILLWORK PLANS AND ELEVATIONS	1.4.2019
A-545	COURTROOM MILLWORK PLANS AND ELEVATIONS	1.4.2019
A-546	COURTROOM MILLWORK PLANS AND ELEVATIONS	1.4.2019
A-551	COURTROOM MILLWORK DETAILS	1.4.2019
A-552	COURTROOM MILLWORK DETAILS	1.4.2019
A-553	COURTROOM MILLWORK DETAILS	1.4.2019
A-554	COURTROOM MILLWORK DETAILS	1.4.2019
A-561	CEILING DETAILS	1.4.2019
A-562	CEILING DETAILS	1.4.2019
A-571	INTERIOR ENLARGED PLAN DETAILS	1.4.2019
A-572	INTERIOR ENLARGED PLAN DETAILS	1.4.2019
A-573	INTERIOR/EXTERIOR ENLARGED PLAN DETAILS	1.4.2019
A-574	INTERIOR/EXTERIOR ENLARGED PLAN DETAILS	1.4.2019
A-584	DETENTION DOOR AND WINDOW DETAILS	1.4.2019
A-595	INTERIOR DETAILS	1.4.2019

Exhibit C - Enumeration of Documents
COF Courts - Phase 2 GMP

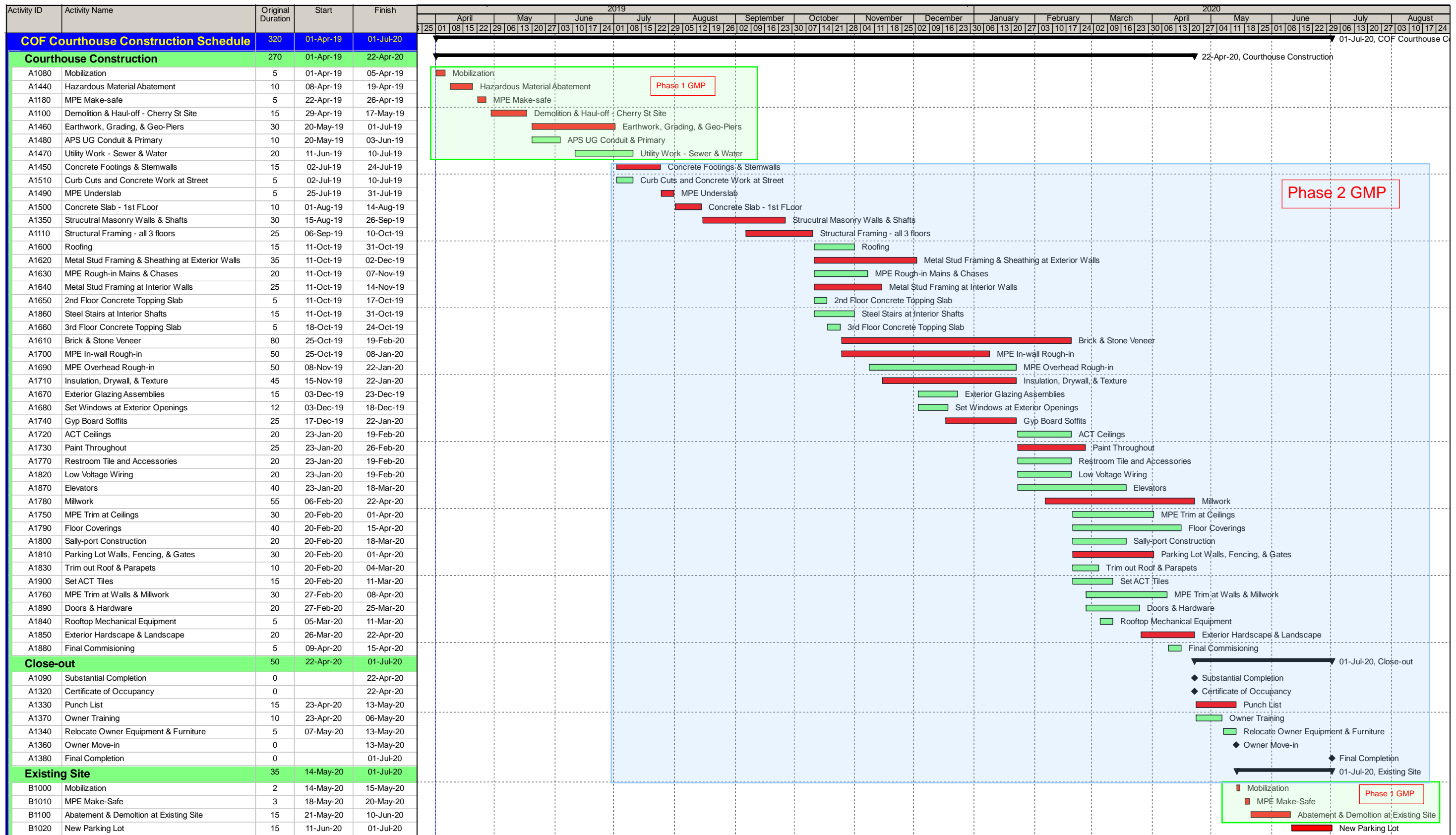
A-611	DOOR SCHEDULE/DOOR FRAME AND PANEL TYPES	1.4.2019
A-612	DOOR SCHEDULE	1.4.2019
A-613	DOOR SCHEDULE	1.4.2019
A-620	DOOR DETAILS	1.4.2019
I-111	FINISH PLAN - LEVEL 1	1.4.2019
I-112	FINISH PLAN - LEVEL 2	1.4.2019
I-113	FINISH PLAN - LEVEL 3	1.4.2019
I-114	FINISH PLAN - ROOF	1.4.2019
1-121	FURNITURE PLAN - LEVEL 1	1.4.2019
1-122	FURNITURE PLAN - LEVEL 2	1.4.2019
1-123	FURNITURE PLAN - LEVEL 3	1.4.2019
GP0.1	GEOPIER GENERAL NOTES AND DETAILS	1.4.2019
GP1.1	GEOPIER PLAN	1.4.2019
S-001	GENERAL STRUCTURAL NOTES	1.4.2019
S-002	TYPICAL DETAILS	1.4.2019
S-003	TYPICAL DETAILS	1.4.2019
S-004	SCHEDULES	1.4.2019
S-101	FOUNDATION PLAN	1.4.2019
S-102	2ND FLOOR FRAMING PLAN	1.4.2019
S-103	3RD FLOOR AND LOBBY FRAMING PLAN	1.4.2019
S-104	ROOF FRAMING PLAN	1.4.2019
S-201	ENLARGED STAIR PLANS	1.4.2019
S-202	ENLARGED STAIR PLANS	1.4.2019
S-301	FOUNDATION DETAILS	1.4.2019
S-302	FOUNDATION DETAILS	1.4.2019
S-401	FLOOR FRAMING DETAILS	1.4.2019
S-402	FLOOR FRAMING DETAILS	1.4.2019
S-501	ROOF FRAMING DETAILS	1.4.2019
S-502	ROOF FRAMING DETAILS	1.4.2019
S-601	STAIR FRAMING DETAILS	1.4.2019
S-701	SALLY PORT FRAMING DETAILS	1.4.2019
S-801	MECHANICAL PLATFORM FRAMING DETAILS	1.4.2019
M-000	MECHANICAL LEGEND AND GENERAL NOTES	1.4.2019
M-001	MECHANICAL SCHEDULES	1.4.2019
M-002	MECHANICAL SCHEDULES	1.4.2019
M-003	MECHANICAL CALCULATIONS	1.4.2019
M-111	MECHANICAL FLOOR PLAN - LEVEL 1	1.4.2019
M-112	MECHANICAL FLOOR PLAN - LEVEL 2	1.4.2019
M-113	MECHANICAL FLOOR PLAN - LEVEL 3	1.4.2019
M-114	MECHANICAL FLOOR PLAN - ROOF PLAN	1.4.2019
M-211	MECHANICAL PIPING PLAN - LEVEL 1	1.4.2019
M-212	MECHANICAL PIPING PLAN - LEVEL 2	1.4.2019
M-213	MECHANICAL PIPING PLAN - LEVEL 3	1.4.2019

Exhibit C - Enumeration of Documents
COF Courts - Phase 2 GMP

M-214	MECHANICAL PIPING PLAN - ROOF PLAN	1.4.2019
M-300	MECHANICAL DETAILS	1.4.2019
M-301	MECHANICAL DETAILS	1.4.2019
M-400	MECHANICAL SCHEMATICS	1.4.2019
M-500	MECHANICAL CONTROLS DRAWINGS	1.4.2019
E-000	ELECTRICAL SYMBOLS AND NOTES	1.4.2019
E-001	ELECTRICAL FIXTURES SCHEDULES, NOTES, AND IECC	1.4.2019
E-002	ELECTRICAL FIXTURES CUTSHEETS AND APPLICATION	1.4.2019
E-100	ELECTRICAL SITE PLAN	1.4.2019
E-211	FIRST FLOOR POWER PLAN	1.4.2019
E-212	SECOND FLOOR POWER PLAN	1.4.2019
E-213	THIRD FLOOR POWER PLAN	1.4.2019
E-231	ROOF LEVEL POWER PLAN	1.4.2019
E-311	FIRST FLOOR LIGHTING PLAN	1.4.2019
E-312	SECOND FLOOR LIGHTING PLAN	1.4.2019
E-313	THIRD FLOOR LIGHTING PLAN	1.4.2019
E-411	FIRST FLOOR MECHANICAL ELECTRICAL CONNECTION PLAN	1.4.2019
E-412	SECOND FLOOR MECHANICAL ELECTRICAL CONNECTION PLAN	1.4.2019
E-412	SECOND FLOOR MECHANICAL ELECTRICAL CONNECTION PLAN	1.4.2019
E-500	ONE-LINE DIAGRAM	1.4.2019
E-600	PANEL SCHEDULES	1.4.2019
E-601	PANEL SCHEDULES	1.4.2019
P100	PLUMBING NOTES AND SPECIFICATIONS	1.4.2019
P001	PLUMBING SCHEDULES	1.4.2019
P201	PLUMBING FIRST FLOOR PLAN	1.4.2019
P202	PLUMBING SECOND FLOOR PLAN	1.4.2019
P203	PLUMBING THIRD FLOOR PLAN	1.4.2019
P300	PLUMBING DETAILS	1.4.2019
P301	PLUMBING DIAGRAM	1.4.2019
FA-0.1	ABBREVIATIONS, LEGENDS, AND GENERAL NOTES	1.4.2019
FA-3.1	FLOOR PLAN - FIRST FLOOR - FIRE ALARM	1.4.2019
FA-3.2	FLOOR PLAN - SECOND FLOOR - FIRE ALARM	1.4.2019
FA-3.3	FLOOR PLAN - THIRD FLOOR - FIRE ALARM	1.4.2019
FA-3.4	ROOF PLAN - FIRE ALARM	1.4.2019
FA-6.1	LARGE SCALE - FLOOR PLANS - FIRE ALARM	1.4.2019
FA-8.1	WIRING DIAGRAMS - FIRE ALARM	1.4.2019
T-0.1	ABBREVIATIONS, LEGENDS, AND GENERAL NOTES	1.4.2019
TA-0.2	SCHEDULES - AUDIO/VISUAL	1.4.2019
TA-3.1	FLOOR PLAN - FIRST FLOOR - AUDIO/VISUAL	1.4.2019
TA-3.2	FLOOR PLAN - SECOND FLOOR - AUDIO/VISUAL	1.4.2019
TA-3.3	FLOOR PLAN - THIRD FLOOR - AUDIO/VISUAL	1.4.2019
TA-4.1	LARGE SCALE CONDUIT PLAN - AUDIO VISUAL	1.4.2019
TA-6.1	LARGE SCALE FLOOR PLANS - AUDIO/VISUAL	1.4.2019

Exhibit C - Enumeration of Documents
COF Courts - Phase 2 GMP

TA-8.1	WIRING DIAGRAMS - AUDIO/VISUAL	1.4.2019
TA-8.2	WIRING DIAGRAMS - AUDIO/VISUAL	1.4.2019
TA-9.1	DETAILS - AUDIO/VISUAL	1.4.2019
TT-1.1	SITE PLAN - TELECOMMUNICATIONS	1.4.2019
TT-3.1	FLOOR PLAN - FIRST FLOOR - TELECOMMUNICATIONS	1.4.2019
TT-3.2	FLOOR PLAN - SECOND FLOOR - TELECOMMUNICATIONS	1.4.2019
TT-3.3	FLOOR PLAN - THIRD FLOOR - TELECOMMUNICATIONS	1.4.2019
TT-8.1	WIRING DIAGRAMS - TELECOMMUNICATIONS	1.4.2019
TT-9.1	DETAILS TELECOMMUNICATIONS	1.4.2019
TY-0.2	SCHEDULES - SECURITY	1.4.2019
TY-1.1	SITE PLAN - SECURITY ELECTRONICS	1.4.2019
TY-3.1	FLOOR PLAN - FIRST FLOOR - SECURITY ELECTRONICS	1.4.2019
TY-3.2	FLOOR PLAN - SECOND FLOOR - SECURITY ELECTRONICS	1.4.2019
TY-3.3	FLOOR PLAN - THIRD FLOOR - SECURITY ELECTRONICS	1.4.2019
TY-6.1	LARGE SCALE FLOOR PLANS - SECURITY ELECTRONICS	1.4.2019
TY-8.1	WIRING DIAGRAMS - SECURITY ELECTRONICS	1.4.2019
TY-8.2	WIRING DIAGRAMS - SECURITY ELECTRONICS	1.4.2019
TY-9.1	DETAILS - SECURITY ELECTRONICS	1.4.2019
TY-9.2	DETAILS - SECURITY ELECTRONICS	1.4.2019



- █ Actual Work
- █ Remaining Work
- █ Critical Remaining Work
- ◆ Milestone
- Summary

COF Courthouse Construction Schedule Project Schedule

Kinney Construction Services, Inc.
06-Feb-19