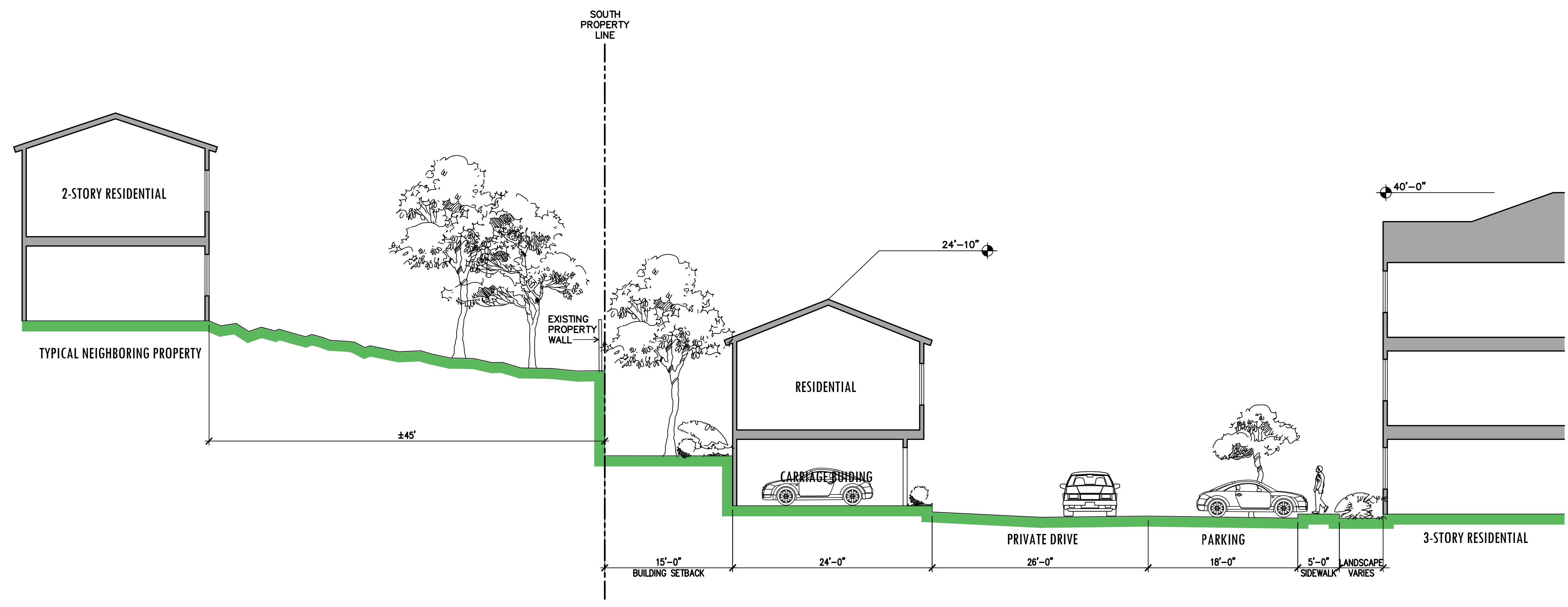




FILE: T:\06\ORB Job Files\17-227\_IRG\_Flagstaff Apartments\CAD Files\Preliminary\17227\_A111\_Site Section updated.dwg USER: raa DATE: Mar, 18 2019 TIME: 02:51 pm



**NORTH/SOUTH SITE SECTION**  
AT SOUTH PROPERTY LINE



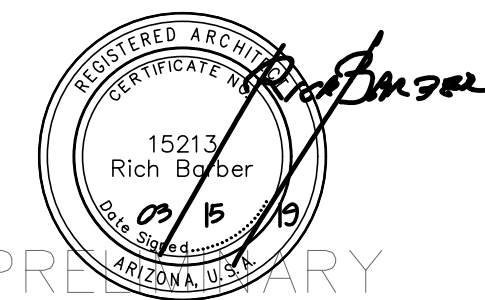
VICINITY MAP  
NOT TO SCALE

# AURA FLAGSTAFF APARTMENTS

151 W HIGH COUNTRY TRAIL  
FLAGSTAFF, ARIZONA 86001



WorldHQ@ORBArch.com



PRELIMINARY  
NOT FOR  
CONSTRUCTION

**DEVELOPER**  
TRINSC RESIDENTIAL GROUP  
4040 E CAMELBACK SUITE 160  
PHOENIX AZ 85018  
TEL. 602.799.9960  
CONTACT: TODD GOSELINK  
TGOSELINK@TRINSCRES.COM

**Architect**  
ORB ARCHITECTURE, LLC  
2944 N. 44TH STREET #101  
PHOENIX, ARIZONA 85018  
TEL. 602.957.4530  
CONTACT: RICHARD ALVAREZ  
RAA@ORBARCH.COM

## REVISIONS

△	
△	
△	
△	
△	
△	

DATE: MARCH 15, 2019 ORB # 17-227

# A1.11

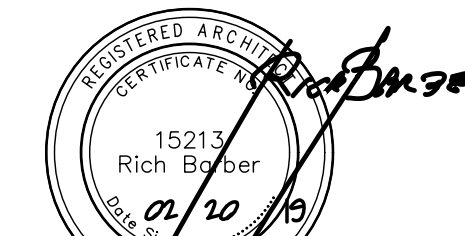
SITE SECTION  
PRELIMINARY

# AURA FLAGSTAFF APARTMENTS

151 W HIGH COUNTRY TRAIL  
FLAGSTAFF, ARIZONA 86001



WorldHQ@ORBArch.com



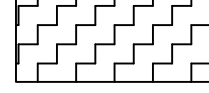

PRELIMINARY  
NOT FOR  
CONSTRUCTION

**DEVELOPER**  
TRINISC RESIDENTIAL GROUP  
4040 E CAMELBACK SUITE 160  
PHOENIX AZ 85018  
TEL. 602.799.9960  
CONTACT: TODD GOSELINK  
TGOSELINK@TRINISCRE.COM

**Architect**  
ORB ARCHITECTURE, LLC  
2944 N. 44TH STREET #101  
PHOENIX, ARIZONA 85018  
TEL. 602.957.4530  
CONTACT: RICHARD ALVAREZ  
RAA@ORBARCH.COM

### OPEN SPACE CALCULATIONS:

SITE:	16.111 ACRES	701,795 SF
REQUIRED:		
CIVIC OPEN SPACE 5%	.805 ACRES	35,090 SF
COMMON OPEN SPACE 15%	2.416 ACRES	105,269 SF
PROVIDED:		
CIVIC OPEN SPACE 5%	.805 ACRES	35,090 SF
COMMON OPEN SPACE 17%	2.754 ACRES	119,965 SF


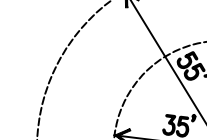



-  INDICATES COMMON OPEN SPACE
-  INDICATES CIVIC OPEN SPACE



## OPEN SPACE PLAN

0' 25' 50' 100'  
SCALE: 1" = 50'-0"

### LEGEND

-  DENOTES BUILDING NUMBER
-  FIRE TRUCK TURNING LANE
-  DENOTES PROPERTY LINE
-  DENOTES ACCESSIBLE PARKING
-  PROPOSED FIRE HYDRANT

### REVISIONS


DATE: FEBRUARY 20, 2019 ORB # 17-227

# A1.12

OPEN SPACE PLAN  
PRELIMINARY