

Switzer Canyon Water Transmission Main Phases IV & V

Charity Lee- Real Estate Manager

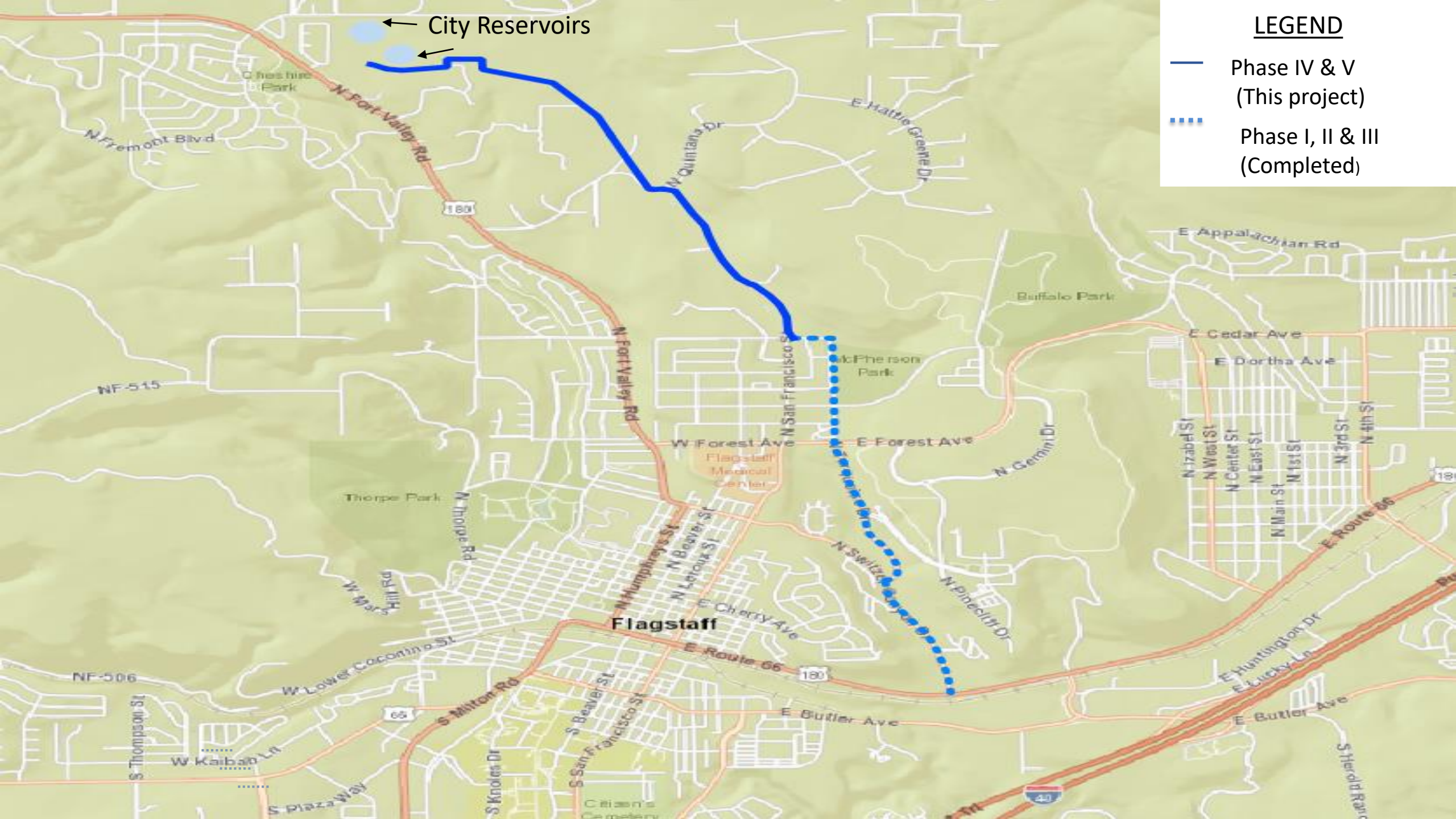
August 27, 2019



← City Reservoirs

LEGEND

- Phase IV & V
(This project)
- Phase I, II & III
(Completed)





Why?



- Pipes were built in the 1950's (cast iron).
- Multiple breaks have recently occurred.





Why?



- Breaks cause major interruptions in service.
- Switzer Canyon Water Transmission Main serves the residents of Flagstaff (approx. 80,000 residents).
- Main water supply to the Flagstaff Medical Center.





Ordinance



- Approval of the Ordinance will authorize staff to acquire the necessary property rights to complete the alignment and move forward with the project.



Questions



?