



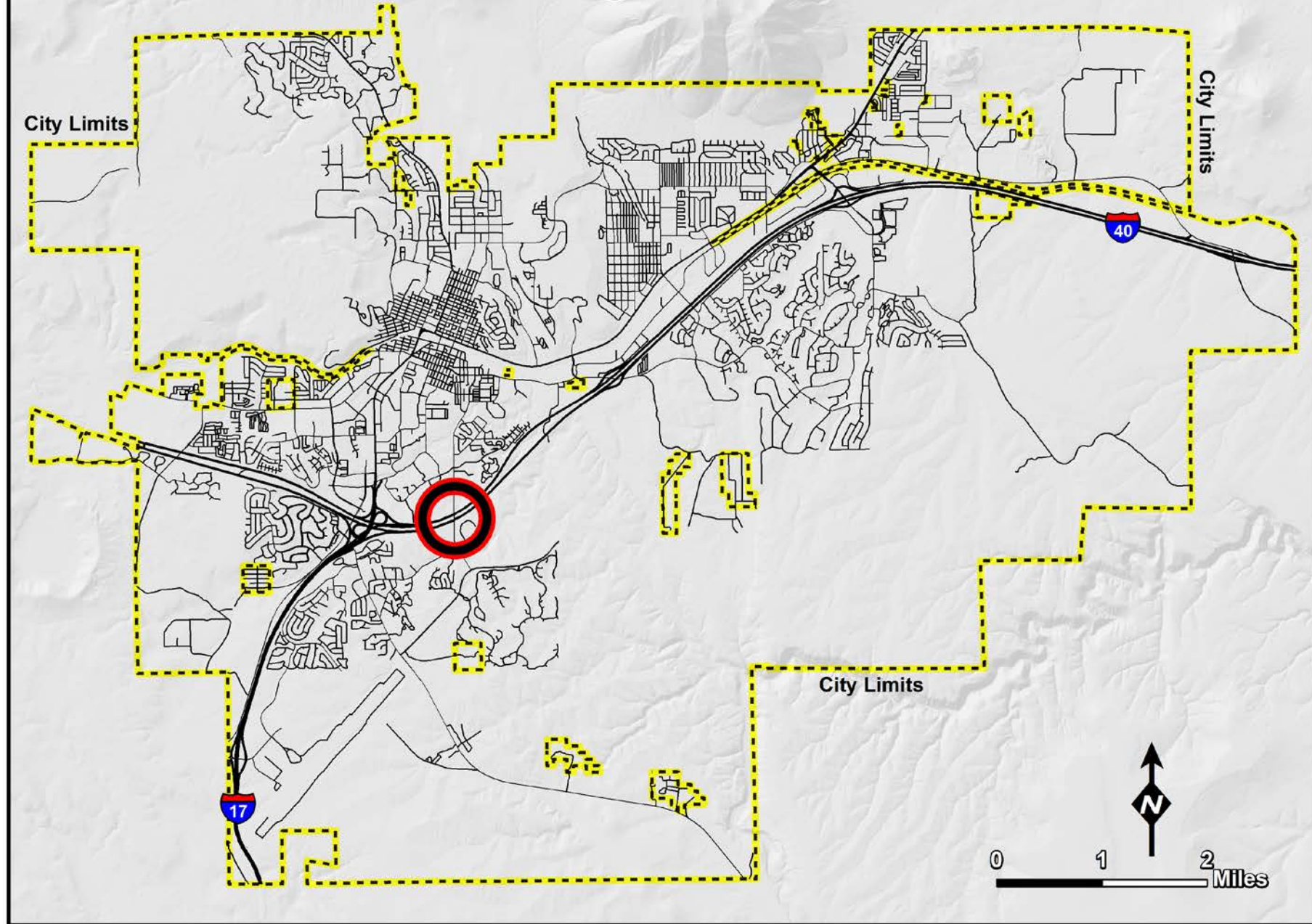
IGA with ADOT

Interstate 40 Lone Tree Bridges

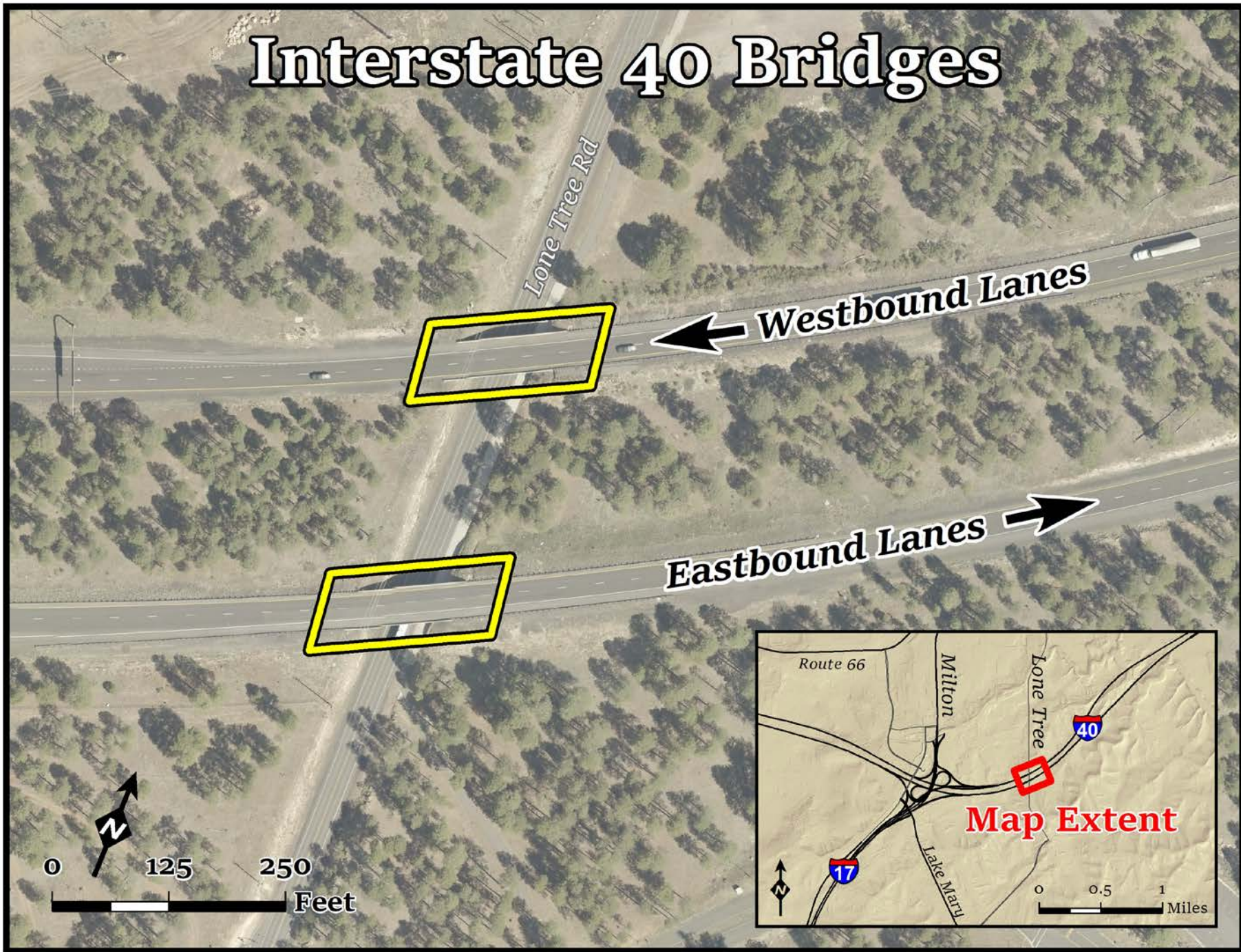
30% Design



Interstate 40 Bridges at Lone Tree Road



Interstate 40 Bridges





I-40 Bridges @ Lone Tree Road

IGA Details

- **ADOT will administer on the City's behalf**
 - Project Assessment (PA)
 - 30% Design Plans
 - Cost estimate for additional bridge lengthening to accommodate the City's future width of Lone Tree Road
- **Project Assessment**
 - Will accommodate the City's preferred cross-section, at a total right-of-way on Lone Tree Road (under the I-40 Bridges)



I-40 Bridges @ Lone Tree Road

IGA Details

- **Cost estimated at \$107,850.00**
 - City is responsible for additional costs related to PA
 - ADOT will notify City Staff of pricing changes as soon as possible, but before significant costs are incurred
 - If PA is less than estimate the difference will be refunded to City
- **Final Design and Construction will be covered in future IGAs**

Questions?

