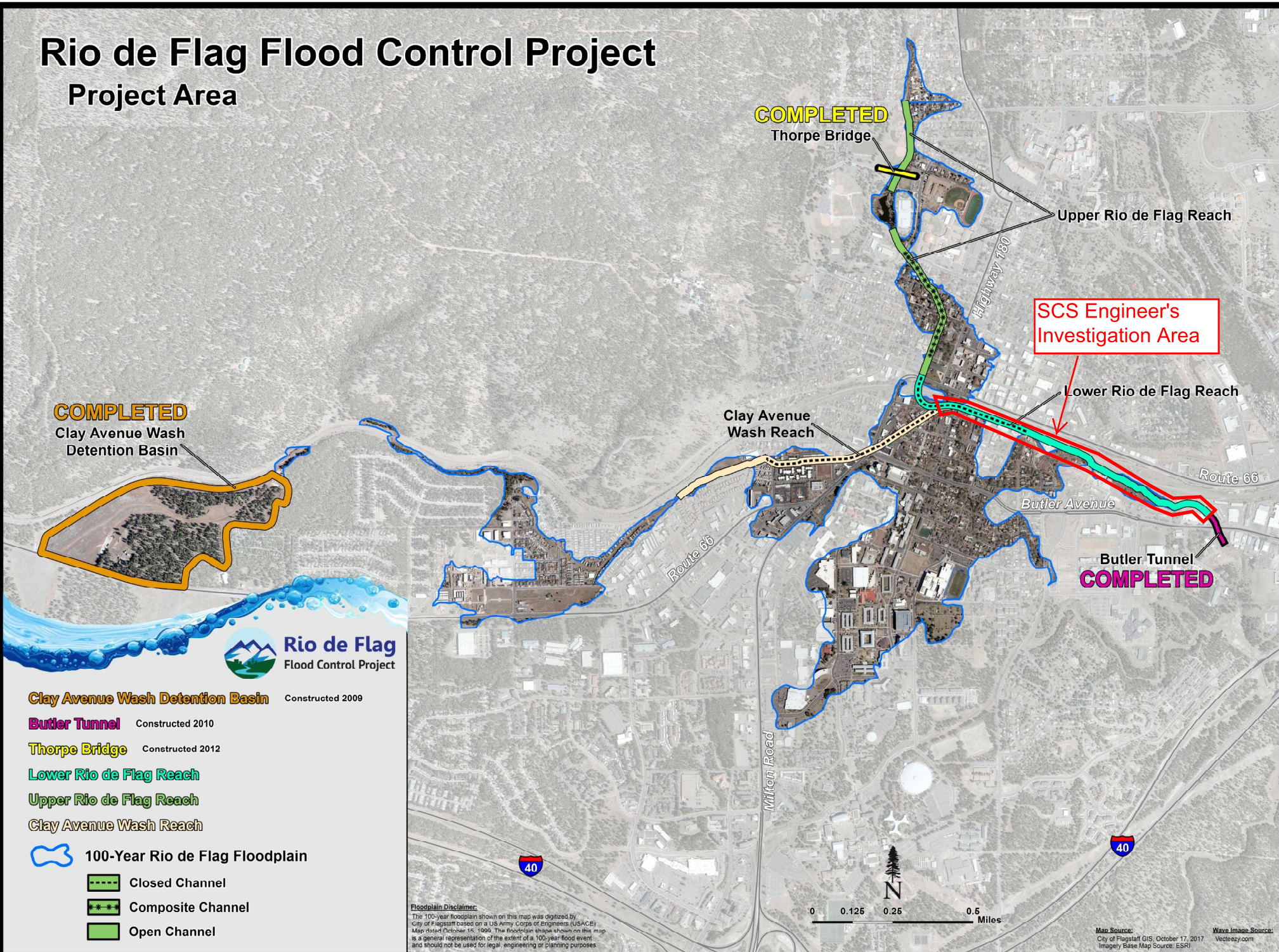


Rio de Flag Flood Control Project

Project Area



COMPLETED
Clay Avenue Wash
Detention Basin

COMPLETED
Thorpe Bridge

**SCS Engineer's
Investigation Area**

Lower Rio de Flag Reach

Butler Tunnel
COMPLETED



Clay Avenue Wash Detention Basin Constructed 2009

Butler Tunnel Constructed 2010

Thorpe Bridge Constructed 2012

Lower Rio de Flag Reach

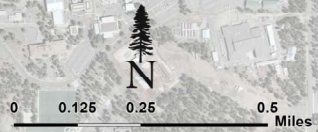
Upper Rio de Flag Reach

Clay Avenue Wash Reach

100-Year Rio de Flag Floodplain

- Closed Channel
- Composite Channel
- Open Channel

Floodplain Disclaimer:
The 100-year floodplain shown on this map was digitized by City of Flagstaff based on a US Army Corps of Engineers (USACE) Map dated October 16, 1999. The floodplain shape shown on this map is a general representation of the extent of a 100-year flood event and should not be used for legal, engineering or planning purposes.



Map Source: City of Flagstaff GIS, October 17, 2017
Imagery Base Map Source: ESRI
Wave Image Source: Vecteezy.com