

# Coconino Joint Land Use Study

Flagstaff City Council

April 16 , 2019





# Joint Land Use Study



## What is a Joint Land Use Study (JLUS)?

A Joint Land Use Study (JLUS) is a cooperative land use planning effort between local government and military installations.



# Joint Land Use Study



## What is a JLUS?

Three main objectives:

1. Establish an ongoing framework for cooperative planning between project stakeholders.
2. Recommend strategies to encourage compatible development around military installations.
3. Recommend approaches to reduce impact on neighbors and area development.



# Joint Land Use Study



## What is a JLUS?

- A JLUS does NOT directly change any land use requirements, authorize or evaluate new military activities, or evaluate individual projects.



# Joint Land Use Study



## Coconino JLUS

- The Coconino JLUS is focused around Army National Guard Camp Navajo (Camp Navajo), Naval Observatory Flagstaff Station (NOFS) and its neighbors.
- The Department of Defense (DoD) Office of Economic Adjustment (OEA), with contributions from Coconino County and participating municipalities, funded this study.



# Joint Land Use Study

## **The People**

### Project Manager

Jay Christelman, Coconino County CD Director

### Project Consultants

Makers architecture and urban design, LLP

Ecology & Environment

Transpo Group, Inc

ETD, Inc.



# Joint Land Use Study

## **The People**

### Policy Committee

Celia Barotz, Flagstaff City Council

Matt Ryan, Coconino County Board of Supervisors

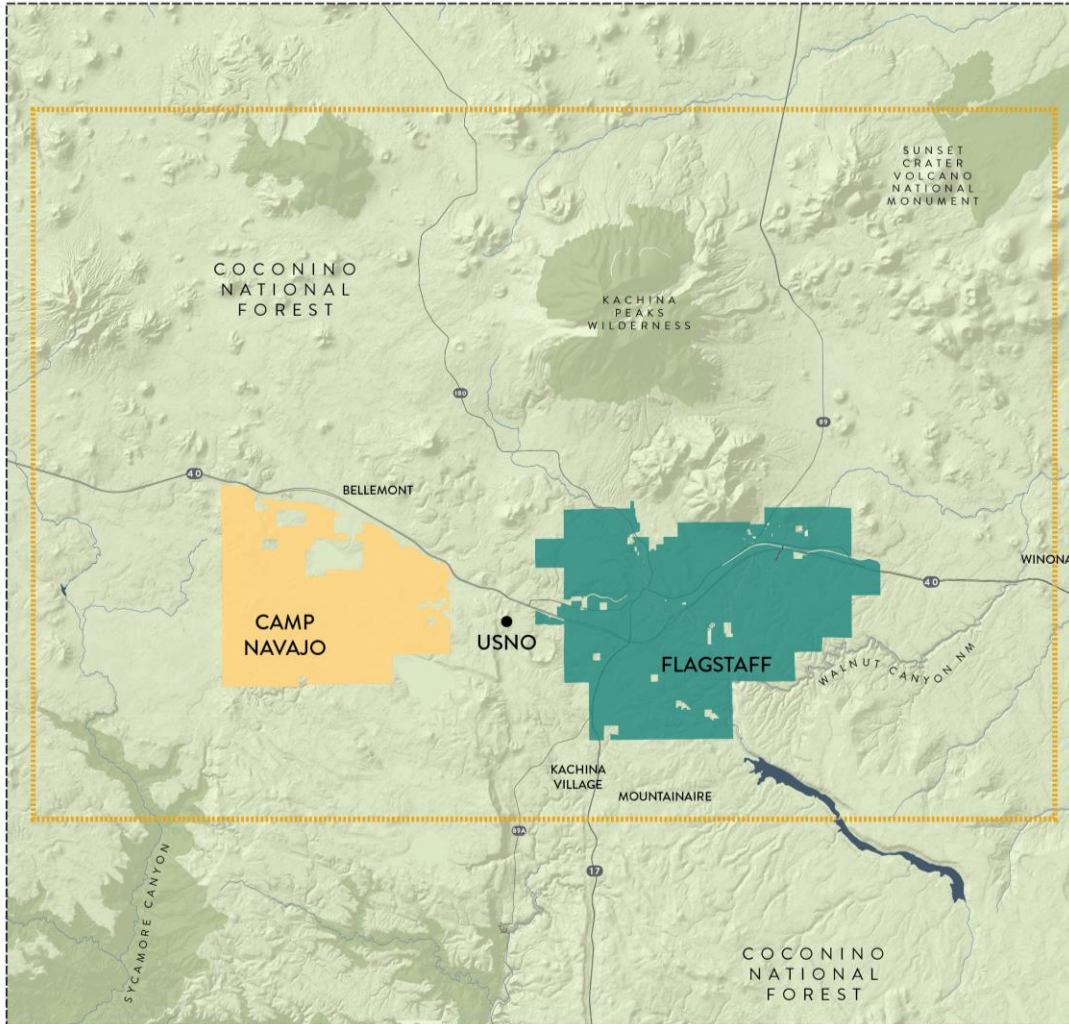
- Federal & State agencies, tribal leaders, local property & business owners

### Technical Committee

Staff representatives of the local, state and federal agencies



# Joint Land Use Study



## Project Study Area

The project study area encompasses all of Coconino County, including United States Naval Observatory Flagstaff Station and Arizona Army National Guard, Camp Navajo.



# Joint Land Use Study



## The Process

1. Stakeholder & Public Involvement, Survey & Interviews
  - a) Draft public involvement strategy
  - b) Outreach to the public and elected officials
  - c) Installation and community tours
  - d) Stakeholder interviews, public meetings and surveys to obtain data



# Joint Land Use Study



## The Process

### 2. Data Collection, Inventory Mapping, & Conflict Compatibility Analysis

- a) Existing conditions findings.
- b) Identify potential land use, zoning conflicts, and potential infrastructure considerations



# Joint Land Use Study



## The Process

### 3. Conflict Resolution Strategies

- a) Formulate strategies to address conflicts and issues.

### 4. Draft & Final JLUS Study Report



# Joint Land Use Study



## Public Participation

- 24 member Policy Committee
- 40 interviews with stakeholders
- Camp Navajo tour
- 3 community workshops – 80 attendees
- Online survey – 130 respondents



# Joint Land Use Study



## **The Outcome – what is in the Plan?**

- Short, mid, and long-term priorities
- An implementation strategy with timelines, costs, and funding mechanisms
- Metrics to measure plan effectiveness
- A monitoring and adaptive management plan
- A recommended organizational structure and process for JLUS participants' continued collaboration



# Joint Land Use Study

## City of Flagstaff - What about coordination?

- Improve notification and coordination between Coconino County, NOFS, and Camp Navajo around potential land use activities and development projects in the study area.
- Coordinate with NOFS and Camp Navajo during regional, comprehensive, activity center, and other plan updates in the study area.



# Joint Land Use Study



## City of Flagstaff - What about Dark Skies?

- Establish an outdoor lighting committee
- Adopt new and periodically review and revise lighting codes to meet emerging technologies and incorporate the following NOFS Mission Compatibility Light Pollution Study code recommendations
- Adopt SLEDS Study recommendations for dark sky-friendly lighting in the public right-of-way.



# Joint Land Use Study



## City of Flagstaff - What about Dark Skies?

- Fund a joint Coconino County and city of Flagstaff lighting specialist position for education/enforcement in the next fiscal year (Spring 2019).



# Joint Land Use Study

## City of Flagstaff - What about the Comprehensive Plan?

- Adopt the JLUS as a comprehensive plan amendment; support existing and adopt new goals and policies to best protect the missions of Camp Navajo and NOFS in the county's and city's comprehensive plan updates.
- Prioritize development of southern and western City of Flagstaff activity center plans in collaboration with NOFS and Camp Navajo.



# Joint Land Use Study

## Motion to Approve JLUS

- City Council will consider a resolution to adopt the Coconino Joint Land Use Study on April 16, 2019.

<https://www.coconinojlus.com/>

Thank you and Good Evening!