

Schultz Creek Trailhead

Open Space Specialist, Robert Wallace



Discussion

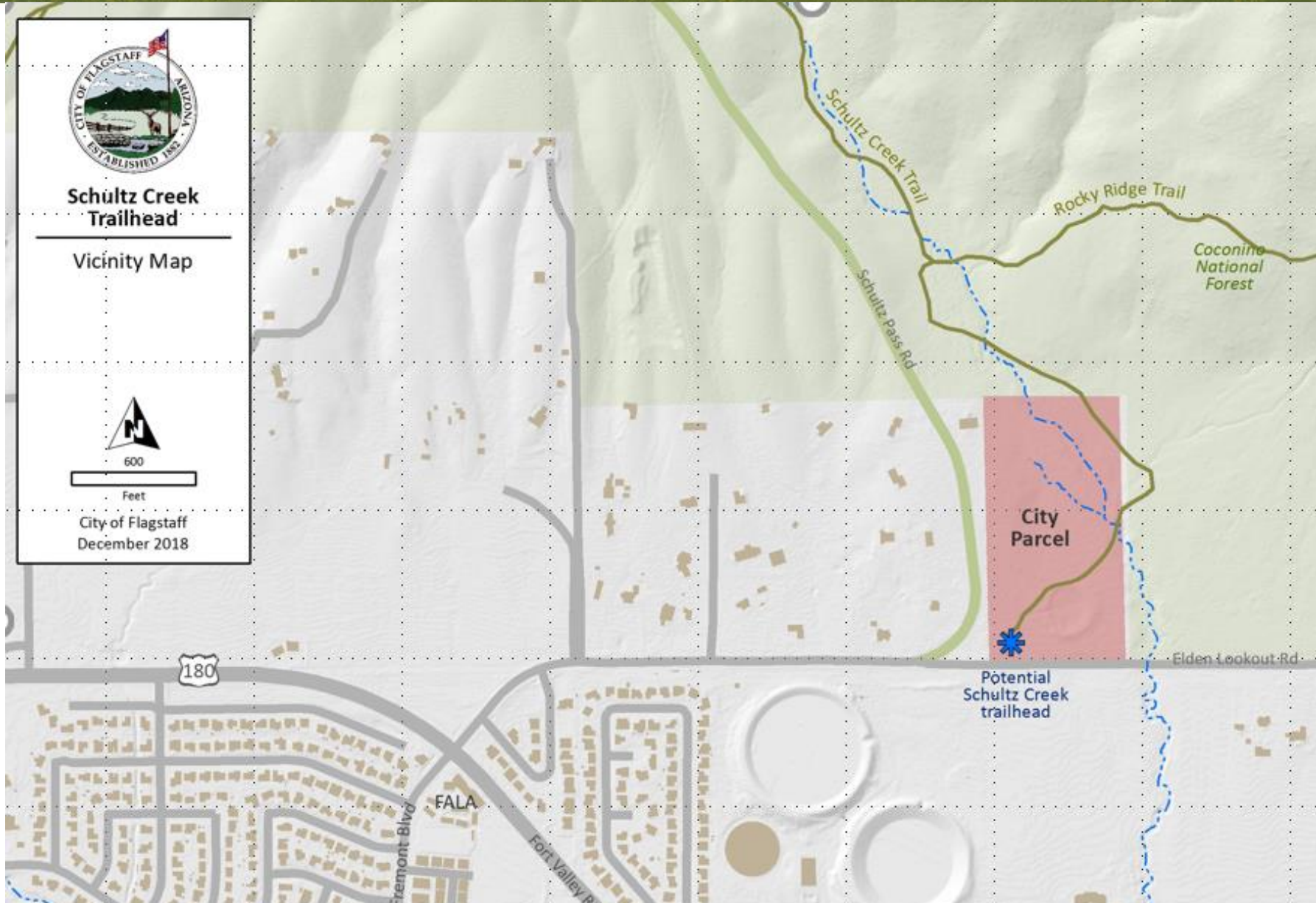


- Background
- Main objective
- Public survey results
- Options to consider
- Request direction





Schultz Creek Trailhead





Schultz Creek Trailhead Background



- In 2013, City Council incorporated parcel into the open space program
- In 2017 ordinance 2017- 07 amended the Flagstaff zoning map to open space
- Main objective to provide access and connectivity to the Schultz Creek area

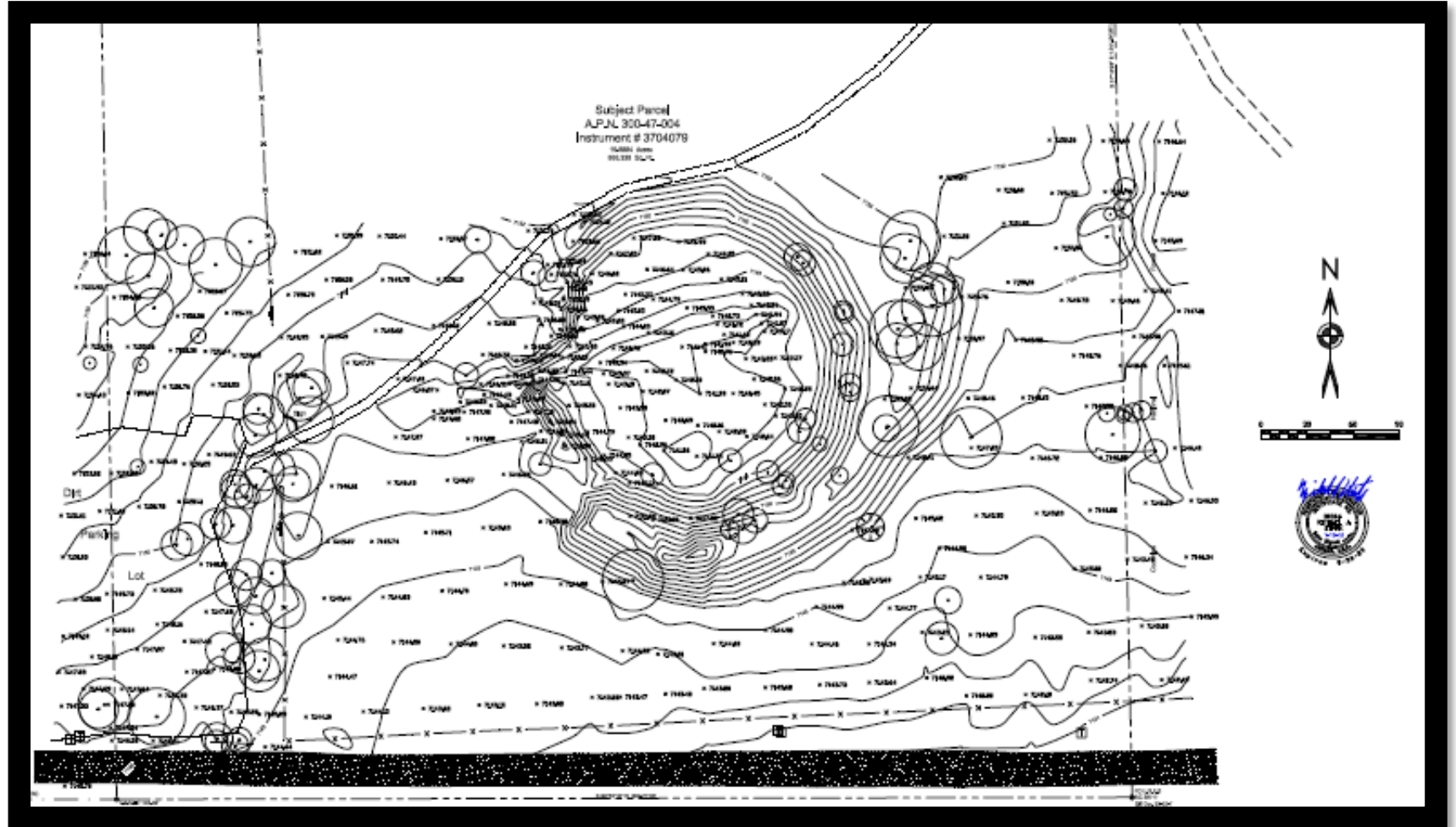




Schultz Creek Trailhead Background



- Historical significance
- Work completed
- Community concerns
- Public survey conducted





Schultz Creak Trailhead Survey Results

Feedback from Flagstaff residents, special interest groups, and residents from neighboring communities

- 36% 1 to 2 times/week
- 26% 2 to 5 times/week
- 27% less than once a month



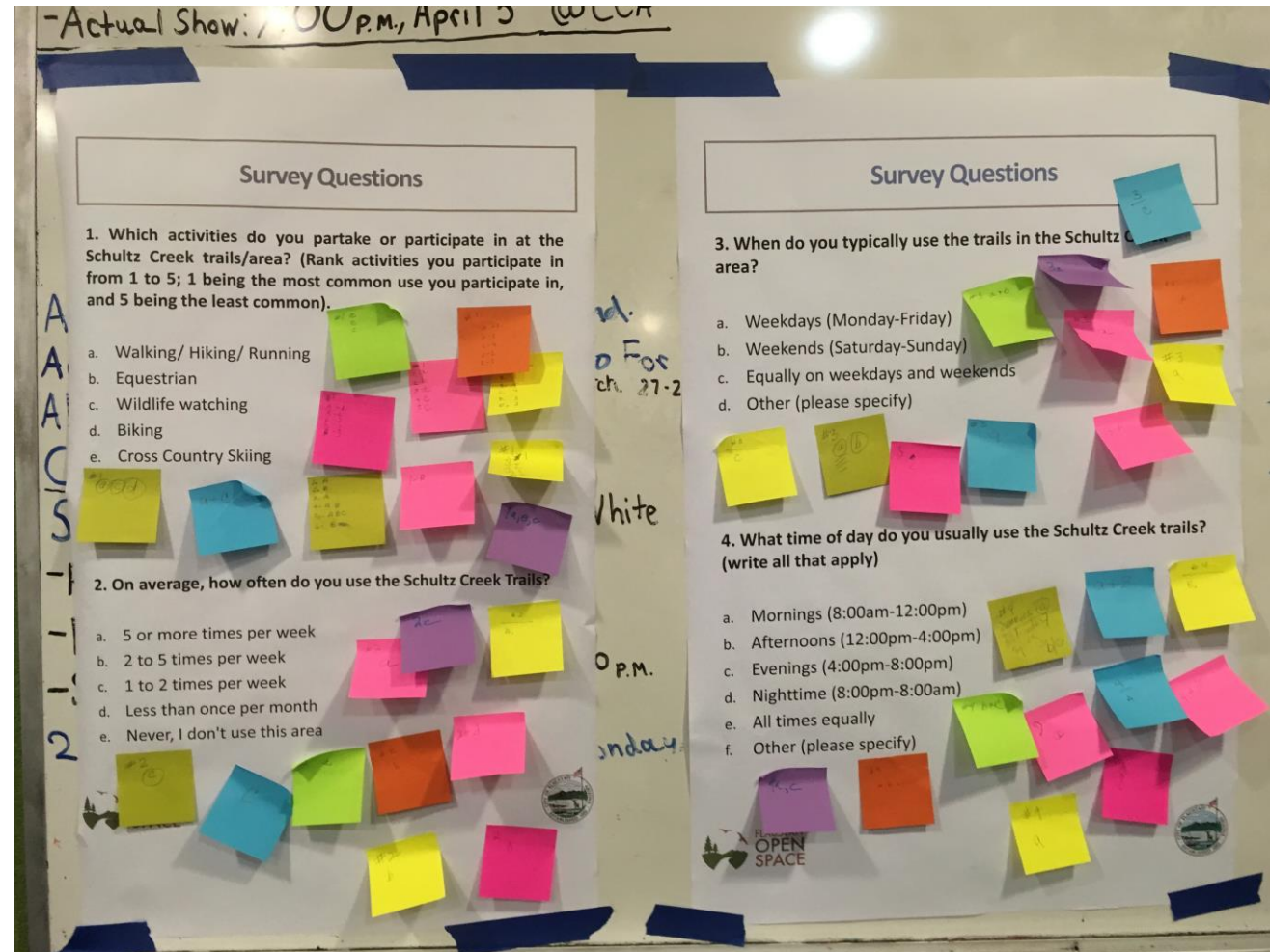


Schultz Creek Trailhead Survey Results



500 responses

- 400 Flagstaff residents
- 53% running water not needed
- 55% picnic tables not needed
- 51% bicycle staging area not needed
- 69% equestrian staging area not needed





Schultz Creak Trailhead Survey Results



- 68% restrooms needed
- 39% supported some basic interpretive signage
- 71% supported an informational map kiosk





Schultz Creek Trailhead Survey Results



- 46% of support parking for between 60 to 100 vehicles
- 45% support parking for 60 or less vehicles
- 5% prefer no parking development





Schultz Creek Trailhead

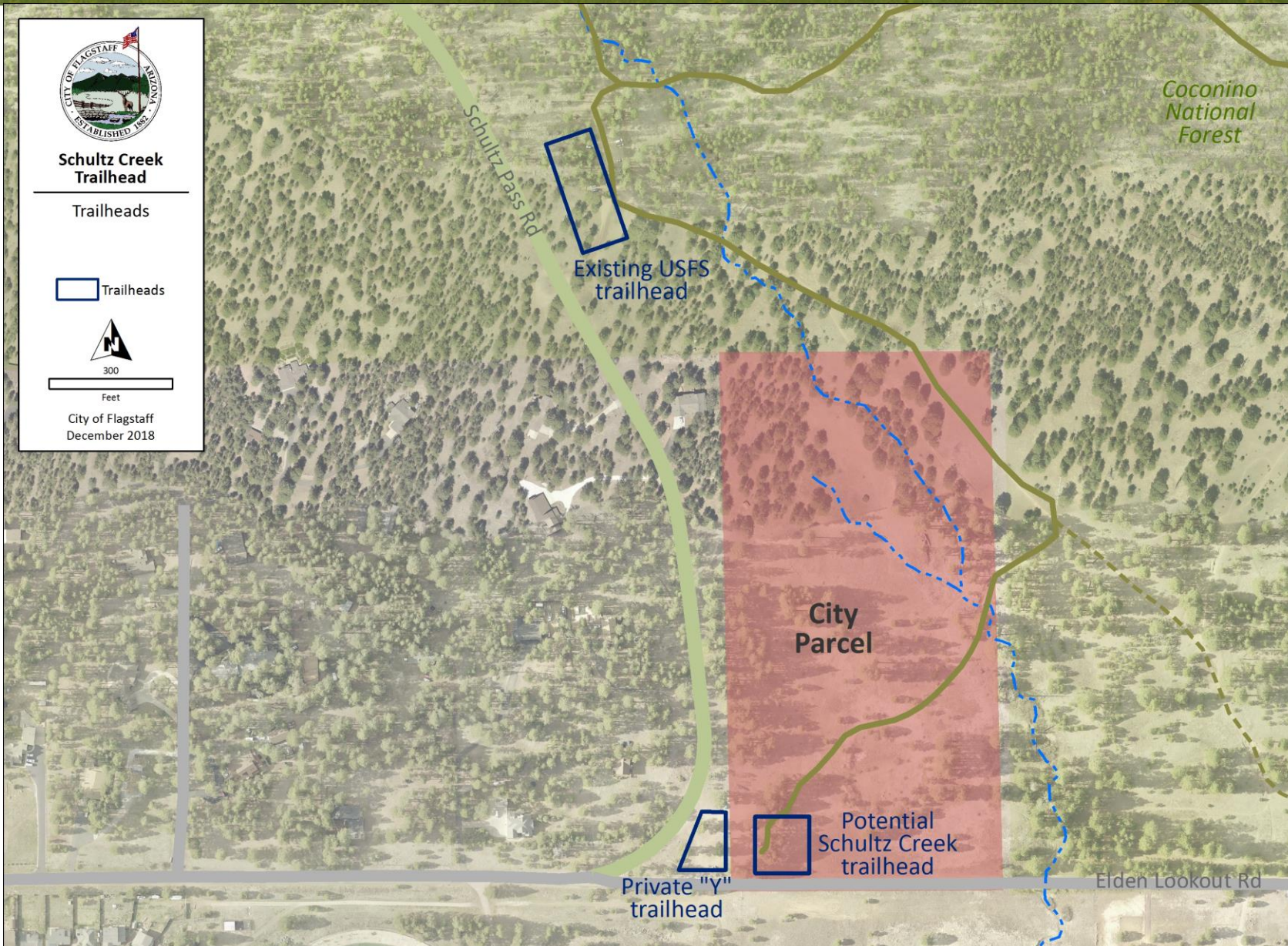
In general

- Some parking and basic facilities are supported
- Feedback indicated an emphasis on maintaining the natural quality of the parcel
- Comments included pursuing an opportunity to acquire part of “the Y”





Schultz Creek Trailhead





Schultz Creek Trailhead, "the Y"





Schultz Creek Trailhead Options

- **A:** Investigate opportunities to acquire “the Y” for trailhead location, if unsuccessful implement option C
- **B:** Build parking on City property for 30 vehicles. Investigate opportunities to acquire “the Y” for to construct further parking. If unsuccessful construct the additional parking on City Property to total 60 spaces
- **C:** Construct parking for 60 vehicles solely on City property.
- **D:** Work with the Forest Service to mitigate use challenges at the official Schultz trailhead
- **E:** Table any further discussion on developing this open space parcel for parking and reprogram the remaining budget within the Open Space Program

Questions?

Robert Wallace

Robert.Wallace@flagstaffaz.gov

928-213-2154

