

# Flagstaff City Council

## City Court Facility Project

**Council Update  
January 22, 2019**





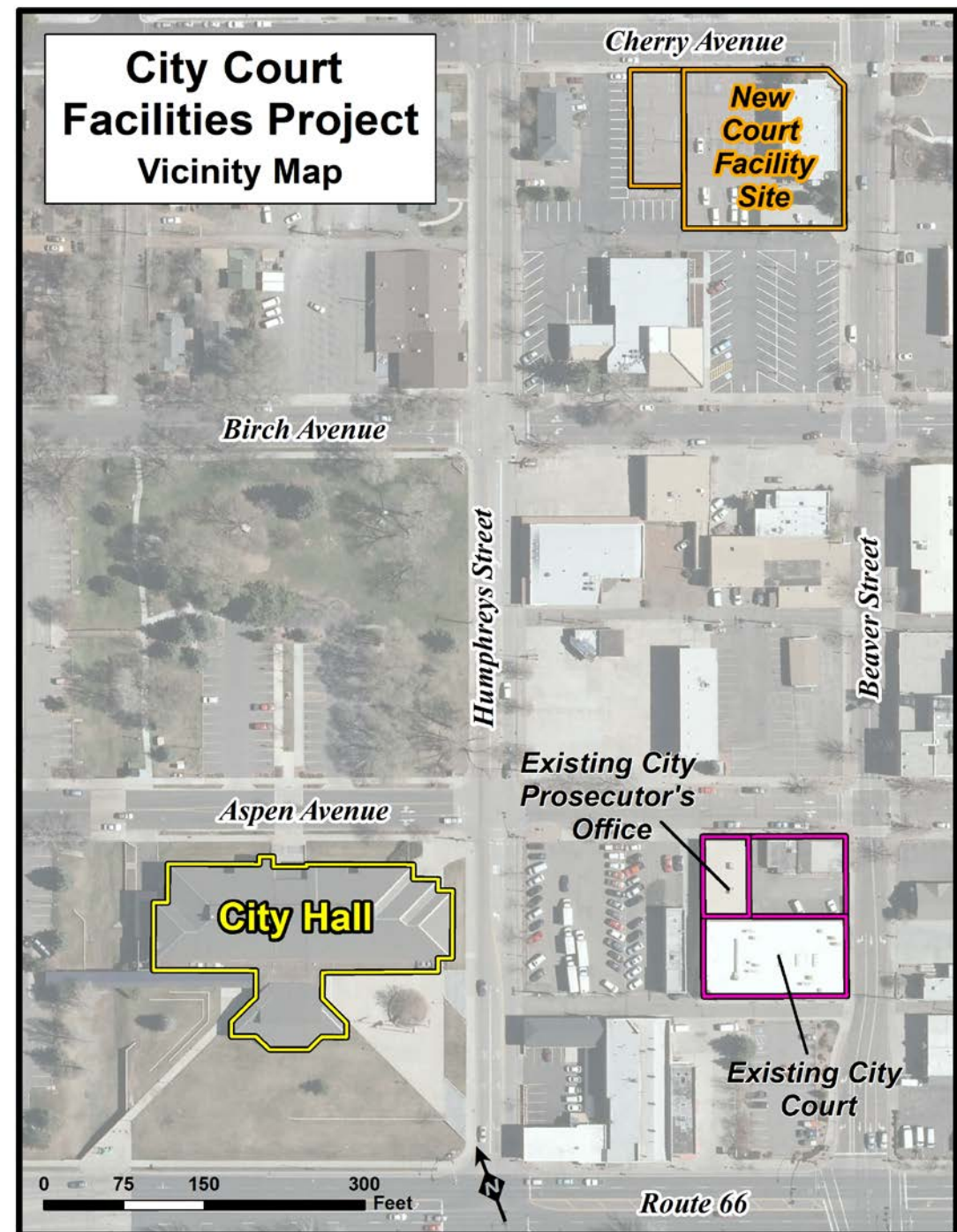
# Overview-Tonight's Discussion Points



- **Project Location & History**
- **Design Phase- Project Elevation & Floor Plan Drawings**
- **Path Forward**

# Project Location

101 West Cherry Avenue



# Project History:

- Proposition 412
- Design-Builder Selection
- Council Award of Design Phase



# Project Elevation Drawings

N-E Perspective (Looking south towards SW corner Beaver/Cherry)



# Project Elevation Drawings

N-W Perspective (On Cherry Looking east towards SW corner Beaver/Cherry)



# Project Elevation Drawings



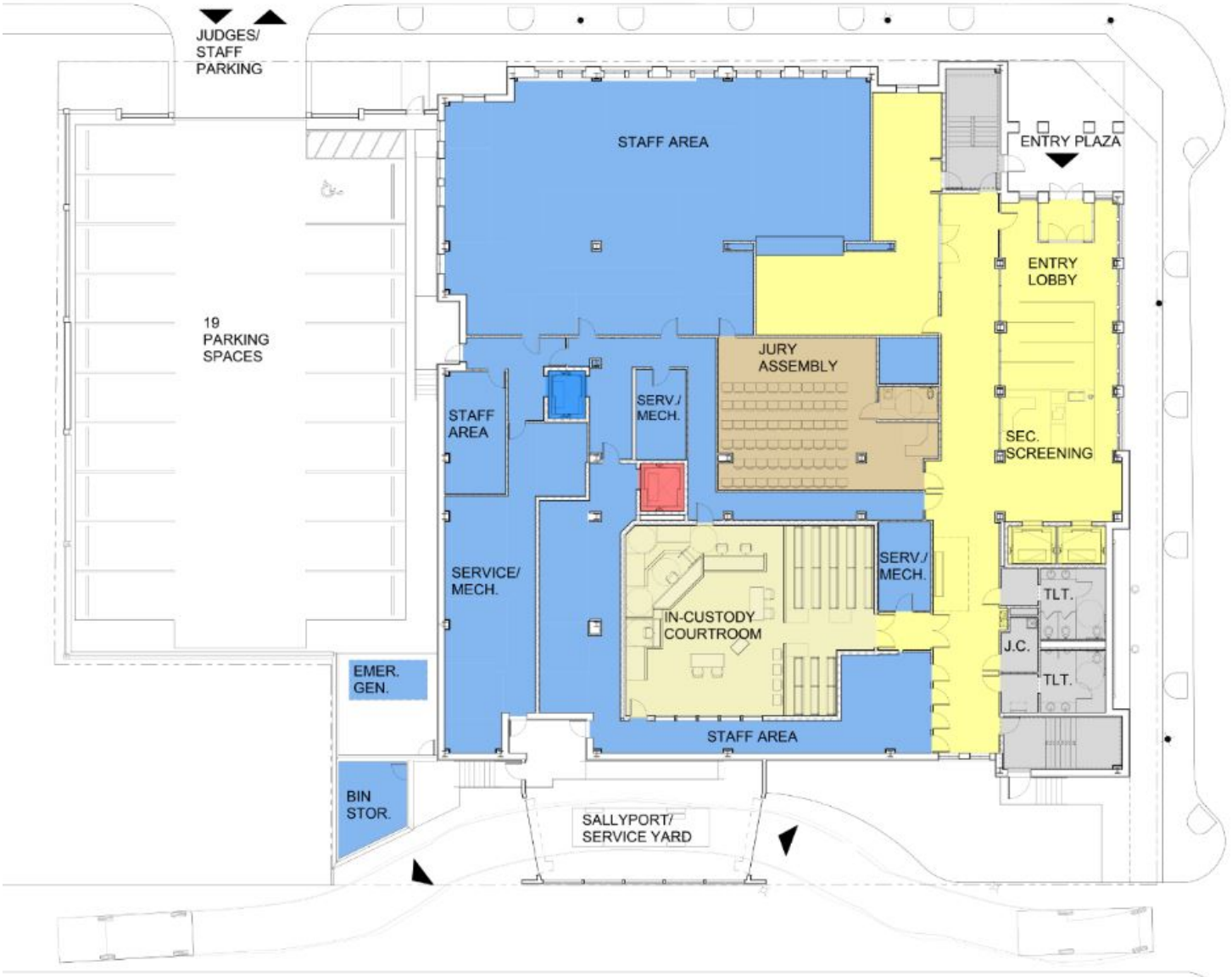
S-E Perspective (On Beaver St. Looking north-west towards SW corner Beaver/Cherry)



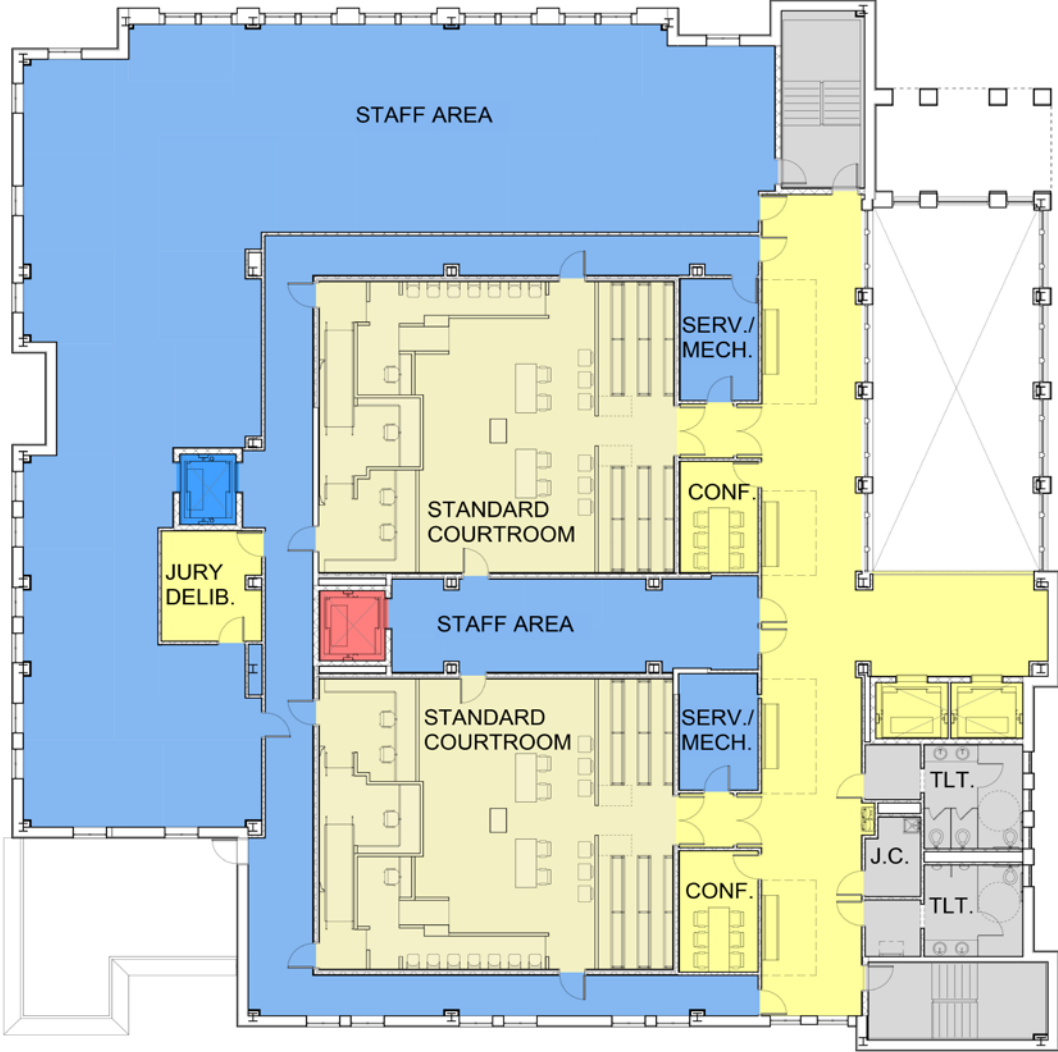
# Project Floor Plan- 1<sup>st</sup> Floor



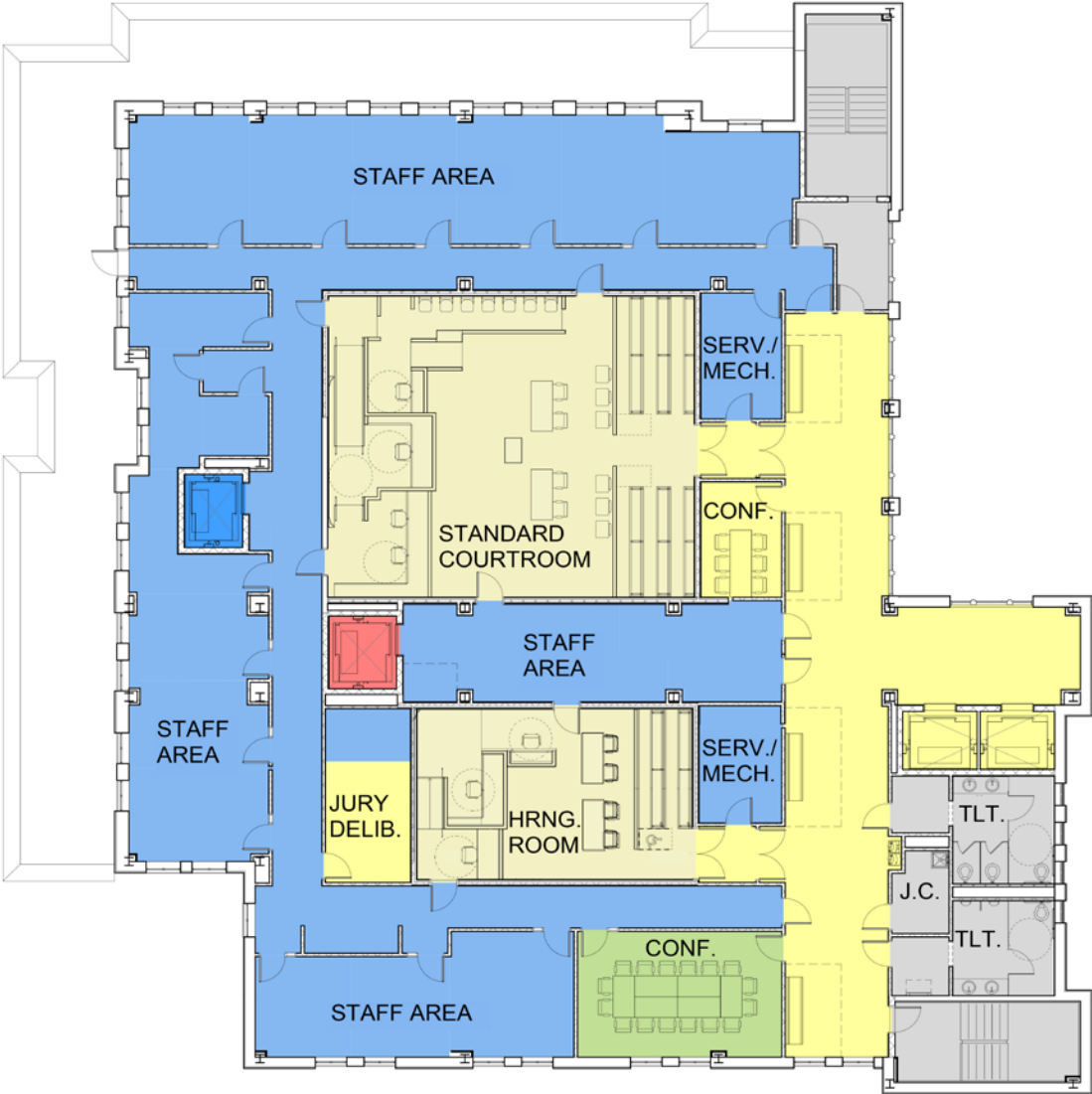
W. CHERRY AVE.



# Project Floor Plan- 2<sup>nd</sup> Floor



# Project Floor Plan- 3<sup>rd</sup> Floor



# Current Plan Review Status



- Facility Programming Complete
- Concept Site Plan Approved
- Site Plan submitted for review 12-11-18
- Design Documents 50% Complete

# Path Forward:



- Public Meeting will be scheduled in February
- Council consideration of Guaranteed Maximum Price (GMP) #1 for demolition and site work – March 2019
- Continue Preparation of Building Plans, Reviews and Permitting
- Come before Council in late spring with consideration of GMP#2 for Building Construction contract award
- Anticipated project completion: late winter/early spring of 2020



# Questions