

Flagstaff City Council

City Court Facility Project

ADA Accessible Parking Discussion

May 14, 2019





ADA Accessible Parking Options

- **Modifying on-street parking adjacent to the new Court building**
- **Modifying the Doris Harper-White Playhouse parking lot**
- **Procuring adjacent private property rights for ADA spaces**
- **Modifying secure Court staff parking**



Modify Secure Court Staff Parking

- Parking lot security follows the recommendations and best practices from the Arizona Supreme Court for staff safety.
- Secure parking works in conjunction with other building security features: secured access entry for staff offices, and separate corridors, stairwells and elevators for staff and public.
- Court and prosecutor's staff have been subjected to hostile citizens and armed citizens trying to intimidate staff.
- Requires redesign of an access ramp to a staff building entrance which may not be feasible, and relocation of major mechanical components that would incur additional costs.



Procure Adjacent Private Property



- No security in City ownership
- Courts would have to either purchase the property or carry a long-term lease
- The cost for this option is not currently considered within the Court project budget



Modifying the Playhouse Parking

- Includes turning two non-ADA spaces into one ADA accessible space on east end of the parking lot
- Adds one non-ADA space on the west end of the lot
- ADA Court patrons would have to cross Beaver Street

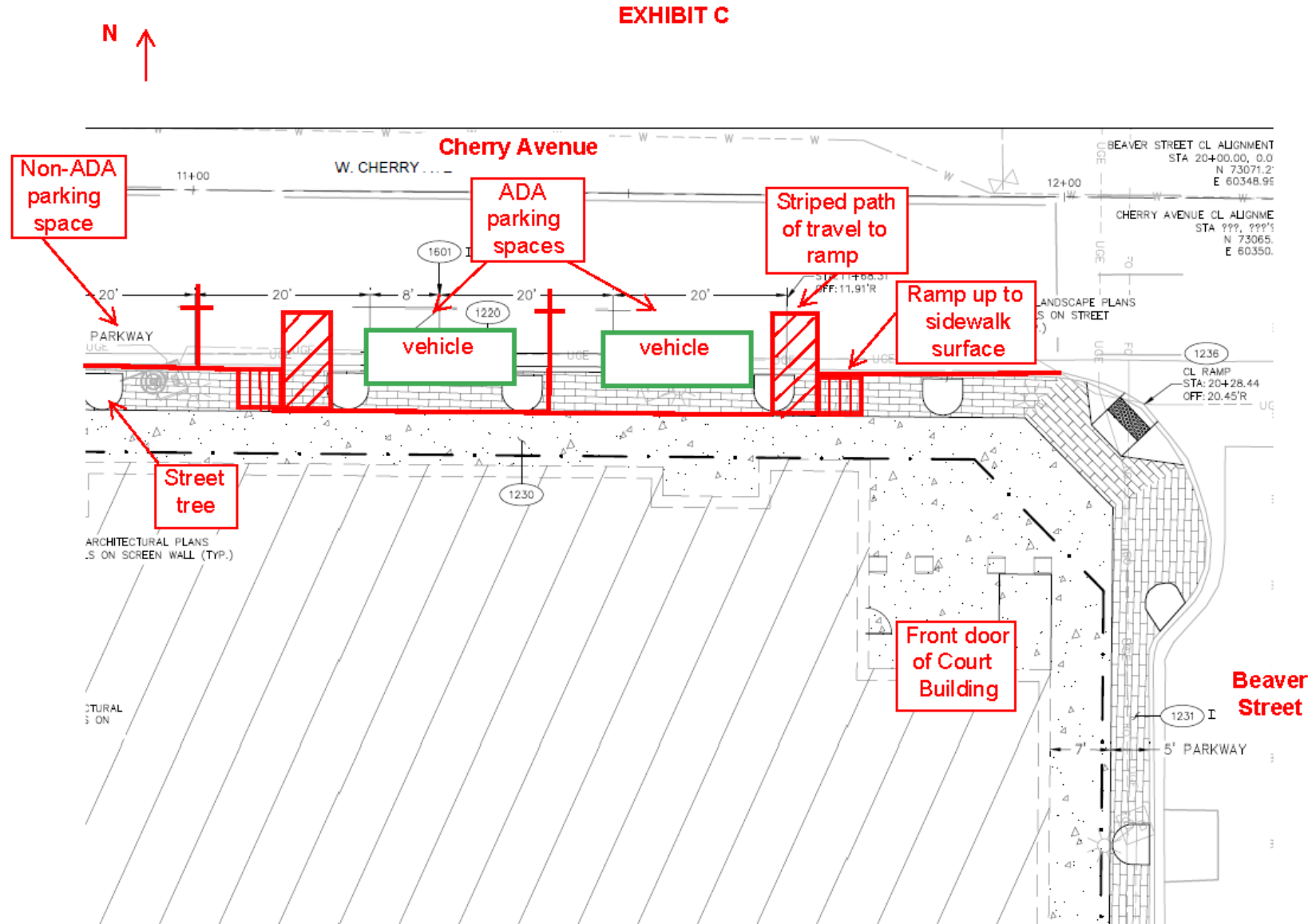


Modify On-Street Parking

- Includes asphalt and curb/gutter removal and replacement, and an additional pedestrian ramp.
- Includes added expense for surveying and redesign, permitting for work within the right-of-way.
- The roadway crown and slope would need to be modified to satisfy ADA requirements and make surface drainage work.
- Necessitates using an area which was originally designated as pedestrian space/parkway and losing street trees.



On-Street Curb Side Parking Exhibit





Staff's Recommended Option

- Provide two ADA compliant spaces on Cherry Avenue in front of the new Courthouse
- Two existing ADA spaces will remain at the Doris-Harper White Playhouse parking lot
- ADA spaces will also be included in the new parking lot at Aspen and Beaver (old Courthouse site)