

REVISIONS: _____ DATE: _____
 1. G. COMMERCE J. JERRELL

NEW BUILDING FOR
CHIPOTLE MEXICAN GRILL
 4429 N. HIGHWAY 89
 FLAGSTAFF, ARIZONA

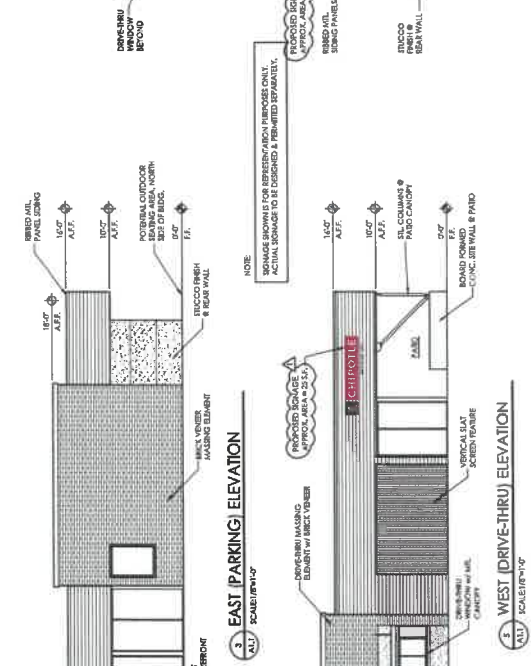
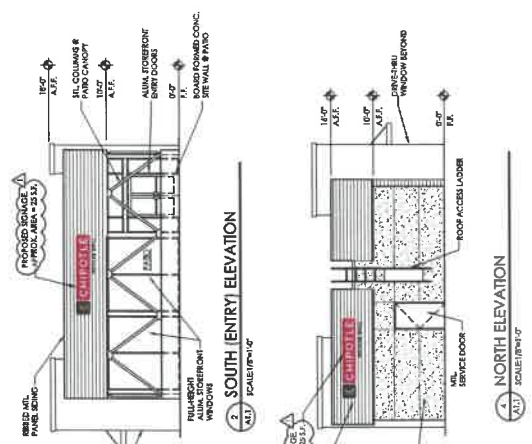
smith ARCHITECTS inc.
 ARCHITECTURE | PLANNING | COLLABORATION
 1100 S. TVAL STREET, SUITE 200
 FLAGSTAFF, ARIZONA 86001
 P: 928.777.9799
 F: 928.777.0293

WE ENCOURAGE THE LOCAL AND REGIONAL SUPPLY CHAIN TO BE USED WHERE APPROPRIATE. WE STRIVE FOR SUSTAINABILITY AND DO NOT TO BE LIMITED BY THE FOLLOWING LISTED MATERIALS.
 MATERIALS LISTED ARE NOT TO BE USED WITHOUT THE APPROVAL OF ARCHITECT.

PREMIARY
 NOT FOR CONSTRUCTION

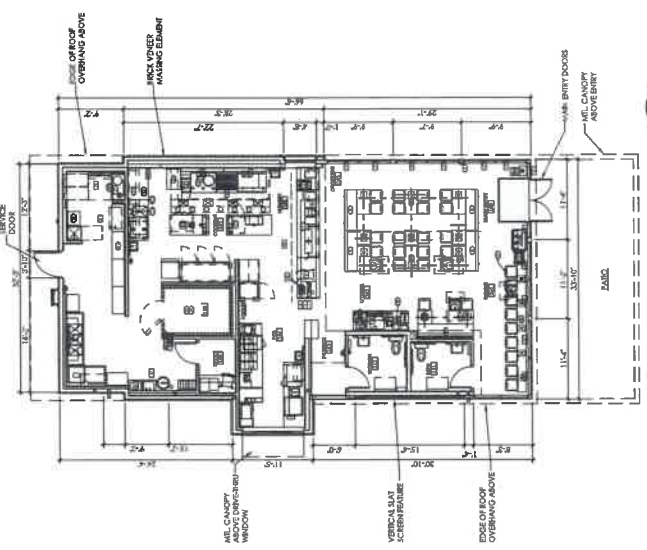
DRAWN BY: _____ REVIEW BY: _____
 P. SMITH P. SMITH
 PROJECT NO.: _____
 1707
 DATE: _____
 OCTOBER 29, 2019
 SHEET:

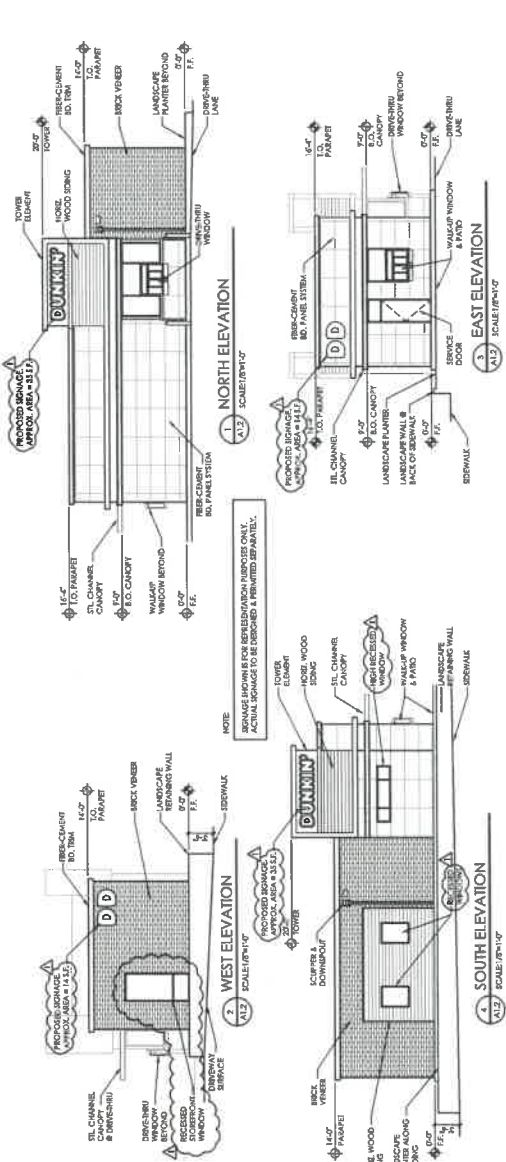
A1.1
 CHIPOTLE
 PRELIMINARY ELEVATIONS
 PRELIMINARY FLOOR PLAN



EXTERIOR FINISH SCHEDULE

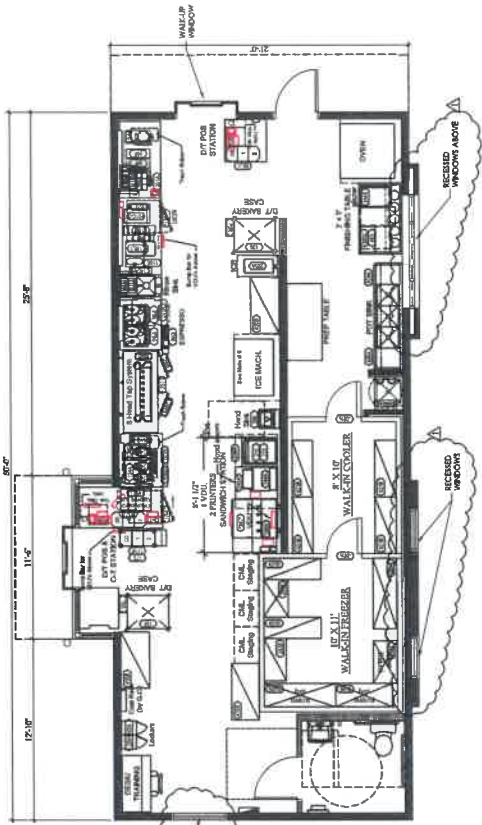
MATERIAL	DESCRIPTION / COLOR
METAL BRICK	MFR: MICH MASTERS II COLOR: "LIGHTS AROUND" PPG 101-14
STUCCO	MEXIMA EXTERIOR FINISH - PRIMER OR PAINT COLOR: "TERRAZZO GREY" BUNGE PAINTS INC. 118 MPV-833
BRICK	MFR: "MICH MASTERS II" SIZE: 7 1/2" x 1 1/2"
WOOD	WOOD COMPOSITE DECKING (BURNED ON END) MFR: TREX OR SIMILAR COLOR: "SEE ELEV." - SHUTTLE COUNTRY
BOARD	CASPER PLANK BOARD FORMED CONCRETE MFR: "SEE ELEV." - SHUTTLE COUNTRY
CONCRETE	FORMED CONCRETE TO MATCH "LIGHTS AROUND" PPG 101-14 COLOR: "TERRAZZO GREY" BUNGE PAINTS INC. 118 MPV-833
AWNINGS	STEEL AWNING W/ 500 RECESSES - PRIMER FOR PAINT COLOR: "TERRAZZO GREY" BUNGE PAINTS INC. 118 MPV-833
GLASS	MEXIMA EXTERIOR FINISH - PRIMER OR PAINT COLOR: "TERRAZZO GREY" BUNGE PAINTS INC. 118 MPV-833





EXTERIOR FINISH SCHEDULE

MATERIAL	DESCRIPTION/COLOR
PAINT	PRIMER: ADVANTAGE 2.5" FIBER CEMENT PANELS COLOR: "TRULY WHITE" TOP COAT: "TRULY PNC" 10192 SP: 57
BRICK VENEER	BRICK: "DUNKIN'" 2" BRICK VENEER COLOR: "WALKERBOARD"
WOOD SIDING	HORIS. CHANNELS SIDING APR: "TRULY" OR "SMILAR" COLOR: "TRULY PNC" 10192 SP: 57
CORNICE	FIBER CEMENT TRIM BOARD - PRIME FOR PAINT COLOR: "TRULY PNC" 10192 SP: 57
METAL TRIM	APR: "TRULY" OR "SMILAR" SP: 57
AWNINGS	FIBER CEMENT AWNING - PRIME FOR PAINT COLOR: "TRULY PNC" 10192 SP: 57
STORAGE	ALUMINUM STORAGE SYSTEM - ANCHOR OR SIMILAR COLOR: "TRULY PNC" 10192 SP: 57



PRELIMINARY FLOOR PLAN
 SCALE: 1/8"=1'-0"
 NORTH

