

3675050

1 of 2

FINAL PLAT OF UNIVERSITY TERRACE UNIT 2

A SUBDIVISION OF TRACT "B" OF UNIVERSITY TERRACE, CASE 7, MAP 58
COCONINO COUNTY RECORDS - LOCATED IN THE NW1/4 OF SECTION 32,
TOWNSHIP 21 NORTH, RANGE 7 EAST, G&S.R.M.
FLAGSTAFF, COCONINO COUNTY, ARIZONA

DEDICATION:
State of Arizona }
County of Coconino } ss.

KNOW ALL MEN BY THESE PRESENTS, that UT20, LLC, hereby publishes this plat as and for the part of UNIVERSITY TERRACE UNIT 2, a subdivision of TRACT "B" OF UNIVERSITY TERRACE, Case 7, Map 58, Coconino County Records. Located in the NW1/4 of Section 32, Township 21 North, Range 7 East, G & S.R.M., Flagstaff, Coconino County, Arizona, as shown in the attached plat, and hereby dedicates to the City of Flagstaff, Arizona, the easements and measurements of the lots and streets shown on said plat and the easements and measurements of the lots and streets shown on said plat. Easements are dedicated to the City of Flagstaff for the purposes shown.

Tracts "A", "C", "D", "E", "F", "G", "H", "I", "J", "K", "L", "M", "N", "O", "P", "Q", "R", "S", "T", "U", "V", "W", "X", "Y", "Z", "AA", "AB", "AC", "AD", "AE", "AF", "AG", "AH", "AI", "AJ", "AK", "AL", "AM", "AN", "AO", "AP", "AQ", "AR", "AS", "AT", "AU", "AV", "AW", "AX", "AY", "AZ", "BA", "BB", "BC", "BD", "BE", "BF", "BG", "BH", "BI", "BJ", "BK", "BL", "BM", "BN", "BO", "BP", "BQ", "BR", "BS", "BT", "BU", "BV", "BW", "BX", "BY", "BZ", "CA", "CB", "CC", "CD", "CE", "CF", "CG", "CH", "CI", "CJ", "CK", "CL", "CM", "CN", "CO", "CP", "CQ", "CR", "CS", "CT", "CU", "CV", "CW", "CX", "CY", "CZ", "DA", "DB", "DC", "DD", "DE", "DF", "DG", "DH", "DI", "DJ", "DK", "DL", "DM", "DN", "DO", "DP", "DQ", "DR", "DS", "DT", "DU", "DV", "DW", "DX", "DY", "DZ", "EA", "EB", "EC", "ED", "EE", "EF", "EG", "EH", "EI", "EJ", "EK", "EL", "EM", "EN", "EO", "EP", "EQ", "ER", "ES", "ET", "EU", "EV", "EW", "EX", "EY", "EZ", "FA", "FB", "FC", "FD", "FE", "FF", "FG", "FH", "FI", "FJ", "FK", "FL", "FM", "FN", "FO", "FP", "FQ", "FR", "FS", "FT", "FU", "FV", "FW", "FX", "FY", "FZ", "GA", "GB", "GC", "GD", "GE", "GF", "GG", "GH", "GI", "GJ", "GK", "GL", "GM", "GN", "GO", "GP", "GQ", "GR", "GS", "GT", "GU", "GV", "GW", "GX", "GY", "GZ", "HA", "HB", "HC", "HD", "HE", "HF", "HG", "HH", "HI", "HJ", "HK", "HL", "HM", "HN", "HO", "HP", "HQ", "HR", "HS", "HT", "HU", "HV", "HW", "HX", "HY", "HZ", "IA", "IB", "IC", "ID", "IE", "IF", "IG", "IH", "II", "IJ", "IK", "IL", "IM", "IN", "IO", "IP", "IQ", "IR", "IS", "IT", "IU", "IV", "IW", "IX", "IY", "IZ", "JA", "JB", "JC", "JD", "JE", "JF", "JG", "JH", "JI", "JJ", "JK", "JL", "JM", "JN", "JO", "JP", "JQ", "JR", "JS", "JT", "JU", "JV", "JW", "JX", "JY", "JZ", "KA", "KB", "KC", "KD", "KE", "KF", "KG", "KH", "KI", "KJ", "KK", "KL", "KM", "KN", "KO", "KP", "KQ", "KR", "KS", "KT", "KU", "KV", "KW", "KX", "KY", "KZ", "LA", "LB", "LC", "LD", "LE", "LF", "LG", "LH", "LI", "LJ", "LK", "LL", "LM", "LN", "LO", "LP", "LQ", "LR", "LS", "LT", "LU", "LV", "LW", "LX", "LY", "LZ", "MA", "MB", "MC", "MD", "ME", "MF", "MG", "MH", "MI", "MJ", "MK", "ML", "MM", "MN", "MO", "MP", "MQ", "MR", "MS", "MT", "MU", "MV", "MW", "MX", "MY", "MZ", "NA", "NB", "NC", "ND", "NE", "NF", "NG", "NH", "NI", "NJ", "NK", "NL", "NM", "NN", "NO", "NP", "NQ", "NR", "NS", "NT", "NU", "NV", "NW", "NX", "NY", "NZ", "OA", "OB", "OC", "OD", "OE", "OF", "OG", "OH", "OI", "OJ", "OK", "OL", "OM", "ON", "OO", "OP", "OQ", "OR", "OS", "OT", "OU", "OV", "OW", "OX", "OY", "OZ", "PA", "PB", "PC", "PD", "PE", "PF", "PG", "PH", "PI", "PJ", "PK", "PL", "PM", "PN", "PO", "PP", "PQ", "PR", "PS", "PT", "PU", "PV", "PW", "PX", "PY", "PZ", "QA", "QB", "QC", "QD", "QE", "QF", "QG", "QH", "QI", "QJ", "QK", "QL", "QM", "QN", "QO", "QP", "QQ", "QR", "QS", "QT", "QU", "QV", "QW", "QX", "QY", "QZ", "RA", "RB", "RC", "RD", "RE", "RF", "RG", "RH", "RI", "RJ", "RK", "RL", "RM", "RN", "RO", "RP", "RQ", "RR", "RS", "RT", "RU", "RV", "RW", "RX", "RY", "RZ", "SA", "SB", "SC", "SD", "SE", "SF", "SG", "SH", "SI", "SJ", "SK", "SL", "SM", "SN", "SO", "SP", "SQ", "SR", "SS", "ST", "SU", "SV", "SW", "SX", "SY", "SZ", "TA", "TB", "TC", "TD", "TE", "TF", "TG", "TH", "TI", "TJ", "TK", "TL", "TM", "TN", "TO", "TP", "TQ", "TR", "TS", "TT", "TU", "TV", "TW", "TX", "TY", "TZ", "UA", "UB", "UC", "UD", "UE", "UF", "UG", "UH", "UI", "UJ", "UK", "UL", "UM", "UN", "UO", "UP", "UQ", "UR", "US", "UT", "UU", "UV", "UW", "UX", "UY", "UZ", "VA", "VB", "VC", "VD", "VE", "VF", "VG", "VH", "VI", "VJ", "VK", "VL", "VM", "VN", "VO", "VP", "VQ", "VR", "VS", "VT", "VU", "VV", "VW", "VX", "VY", "VZ", "WA", "WB", "WC", "WD", "WE", "WF", "WG", "WH", "WI", "WJ", "WK", "WL", "WM", "WN", "WO", "WP", "WQ", "WR", "WS", "WT", "WU", "WV", "WW", "WX", "WY", "WZ", "XA", "XB", "XC", "XD", "XE", "XF", "XG", "XH", "XI", "XJ", "XK", "XL", "XM", "XN", "XO", "XP", "XQ", "XR", "XS", "XT", "XU", "XV", "XW", "XX", "XY", "XZ", "YA", "YB", "YC", "YD", "YE", "YF", "YG", "YH", "YI", "YJ", "YK", "YL", "YM", "YN", "YO", "YP", "YQ", "YR", "YS", "YT", "YU", "YV", "YW", "YX", "YY", "YZ", "ZA", "ZB", "ZC", "ZD", "ZE", "ZF", "ZG", "ZH", "ZI", "ZJ", "ZK", "ZL", "ZM", "ZN", "ZO", "ZP", "ZQ", "ZR", "ZS", "ZT", "ZU", "ZV", "ZW", "ZX", "ZY", "ZZ".

IN WITNESS WHEREOF, UT20, LLC, has caused its name to be signed and the same to be attested by the signature of its representative, hereunto authorized.

Done at Flagstaff, Arizona, this 17 day of September, 2013.

BY: Brian Rhoads
Brian Rhoads (Managing Manager)

ACKNOWLEDGMENT:

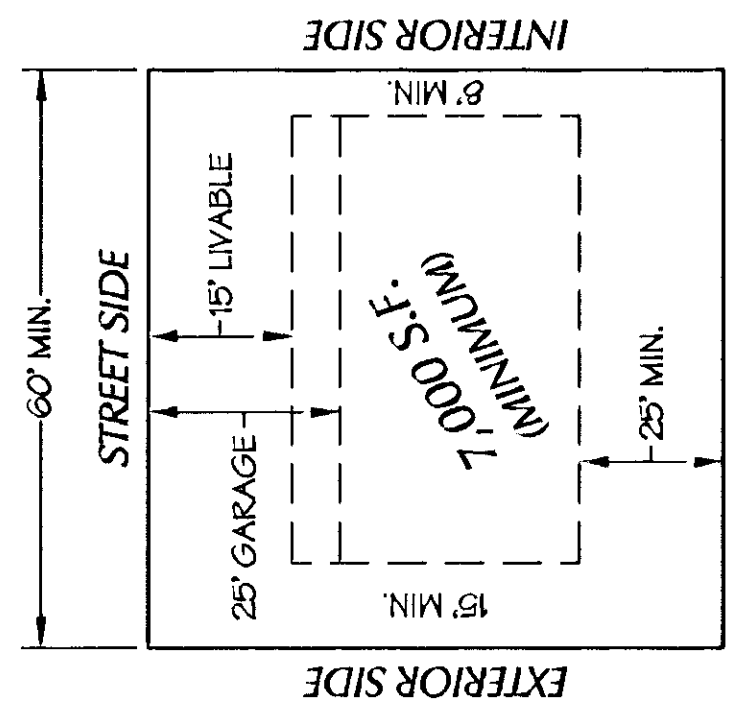
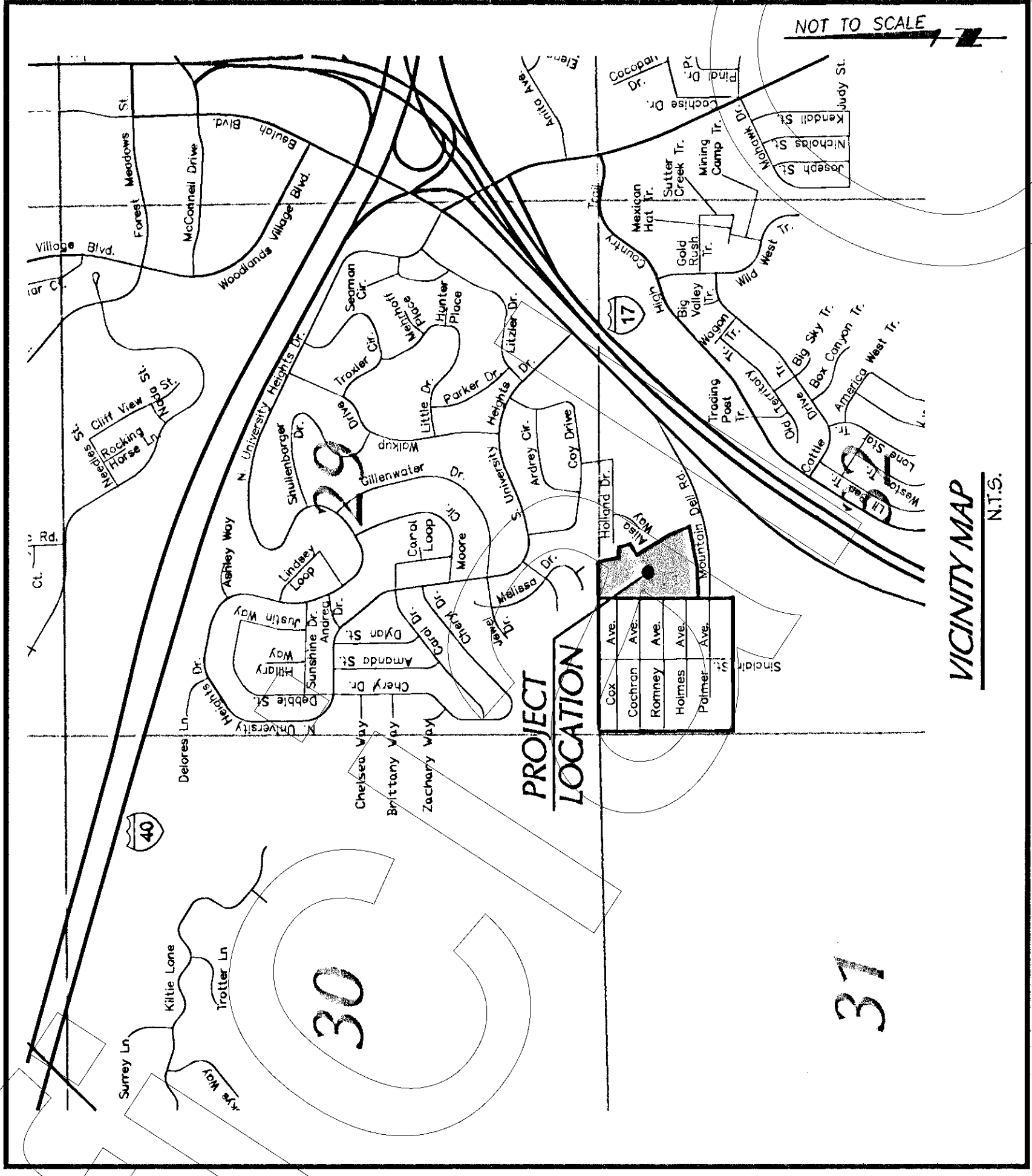
State of Arizona } ss.
County of Coconino }

On this the 17 day of September, 2013, before me, the undersigned personally appeared, BRIAN RHODS, Managing Member of UT20, LLC, an Arizona Limited Liability Company, who acknowledged by self to represent UT20, LLC, and that he/she as such, being authorized so to do, executed the foregoing instrument for the purposes therein contained.

IN WITNESS WHEREOF, I hereunto set forth my hand and official seal.

Notary Public
My commission expires: 8-11-2017

JOHN R. KIRAN
Notary Public, State of Arizona
Commission Expires on August 11, 2017



TYPICAL SETBACKS
RI ZONE
N.T.S.

INDEX TO SHEETS
SHEET 1 COVER SHEET
SHEET 2 FINAL PLAT

CITY OF FLAGSTAFF:
It is hereby certified that this plat has been officially approved for record by the Council of the City of Flagstaff, Arizona on the 17 day of September, 2013.

BY: [Signature]
MAYOR

ATTEST:
[Signature]
CITY CLERK

It is hereby certified that this plat has been officially approved for record by the Development Review Board of Flagstaff, Arizona on the 12 day of September, 2013.

BY: [Signature]
CHAIRPERSON

BY: [Signature]
CITY ENGINEER

UTILITY COMPANY ACKNOWLEDGMENT

ANTHONY LESMA DATE 7/2/13
UNISOURCE ENERGY

Carla Wilson DATE 7/2/13
CENTURYLINK

Nelissa Nelson DATE 7/2/13
ARIZONA PUBLIC SERVICE

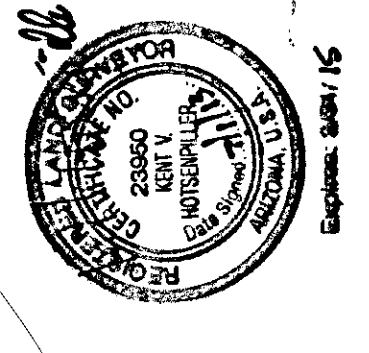
[Signature] DATE 7/2/13
SUDDENLINK

PROJECT INFORMATION

SUBDIVISION NAME: UNIVERSITY TERRACE UNIT 2
PROJECT LOCATION: 4075 S. HOLLAND ROAD
FLAGSTAFF, AZ 86001

LATITUDE: N 35° 09' 56.5"
LONGITUDE: W 111° 40' 42.1"
APN NUMBER: 112-47-032
TOTAL ACREAGE: 10.55
NUMBER OF LOTS: 20
DENSITY: 1.90 UNITS / ACRE
ZONING DISTRICT: R1
PROPOSED USE: SINGLE FAMILY DETACHED
OWNER/DEVELOPER: UT20 LLC,
1750 RAILROAD SPRINGS BLVD,
SUITE 10
FLAGSTAFF, AZ 86001
(923) 699-1169

CERTIFICATION
I HEREBY CERTIFY THAT THIS PLAT, AND THE SURVEY ON WHICH IT IS BASED, WAS PERFORMED BY ME AND THAT IT IS TRUE AND CORRECT TO THE BEST OF MY KNOWLEDGE.



Instrument # 2013050
Recorded At the Request of
City of Flagstaff, Arizona
Date: 10/22/2013
County: Coconino
Party: Hansen, County Recorder

