



COMMUNITY DEVELOPMENT DIVISION
ENGINEERING SECTION

Monthly Capital Projects Report
August 2020

1

Rio de Flag Flood Control Project

PHASE: DESIGN

FUND: STORMWATER & AGING INFRASTRUCTURE

Description - Design consists of channel improvements along both the Rio de Flag and Clay Avenue Wash channels, and the construction of an underground concrete confluence structure. The channelization of Clay Avenue Wash channel will begin at an upstream inlet structure transitioning into an open rectangular concrete channel and then transitioning into an underground reinforced concrete box channel ending at the confluence on Clay Avenue Wash and Rio de Flag, approximately 5,000 linear feet. The channelization of the Rio de Flag channel will begin at the underground confluence structure as an underground reinforced concrete box channel and then transitioning into an open trapezoidal channel with riprap placed on invert and side slopes. Work includes widening and deepening by large scale excavation, grading, and compacted fill; disposal of excess excavated material; installing over 1 mile of underground reinforced concrete box channel, riprap slope protection, critical underground concrete confluence hydraulic structure, maintenance, drainage culverts, many utility relocations, landscaping and mitigation planting, A.C. paving, access ramps, safety railing and appurtenant work. Construction methods will include hard rock excavation during grading and utility excavation, groundwater dewatering, shoring, environmental cleanup and disposal, cut slope and trench stabilization, and instrumentation installation and monitoring.

Project Update:

100% plans status -Phase I & Phase II

- USACE and their consultant (TetraTech) continue to address comments in preparation of the ATR-SAR-BCOES submittal.

Utility Relocations Status - Phase I & Phase II

- Coordination continues with Unisource, APS, Suddenlink, Centurylink and AT&T to further develop their infrastructure relocation plans.
- USACE has provided a sample form to Utility Relocation Agreement.

Environmental Status - Phase I & Phase II

- The City continues working with consultants (Western Technology and SCS Engineers) and USACE to develop the Environmental Response Plan.

Property Acquisition Status -Phase I

- Project Team encountered a setback regarding the need for an exhibit that shows all encumbrances as shown on title reports for each impacted parcel.
- City and Shephard-Wesnitzer, Inc. are working on an encumbrance exhibit to supplement the Real Estate task.
- USACE's Real Estate Team provided written documentation to the City on recommendations to satisfy the Real Estate Certification.
- USACE has a new Real Estate Manager assigned to this project.

US Army Corps of Engineers

- We continue to work with USACE to determine a delivery schedule that adequately addresses the property acquisition tasks and approvals and that respects BNSF's required review timelines for development of the Construction & Maintenance Agreement.

Cash Contributions

- The City sent an EFT cash contribution of \$15,077,177.

Internal & External Meetings

- Staff held our internal monthly staff meeting on August 5, 2020.
- Weekly coordination meeting with SWI were held to discuss project issues.



Aspen Avenue in vicinity of City Hall & Library

2

Phoenix Avenue Culvert and Watermain Replacement

PHASE: DESIGN

FUND: STORMWATER & AGING INFRASTRUCTURE

Description - The project will replace the Rio de Flag box culvert (which runs beneath Phoenix Avenue and the Zani building) with the appropriate conveyance structure and will upgrade a 12” water main in Phoenix Avenue from Mikes Pike to Beaver Street. Phoenix Avenue will be reprofiled, roadway surface drainage issues will be addressed, edge improvements will be made as needed and the roadway will be repaved.

Project Update

- The construction plans for the Phoenix work reached the 90% level of completion in June 2019, prior to funding becoming available for the Rio de Flag project.
- With funding of the Rio de Flag, design of the Phoenix Avenue conveyance structure was suspended while the Army Corps of Engineers design work for the Rio de Flag Phase 1 Lower Reach moved forward.
- The City Stormwater Section is determining what the stormwater conveyance solution may be based upon hydrologic data from the Army Corp of Engineers.
- There is not a current schedule on when the design solution will be resolved.
- The full improvements will be performed in the future as one integrated capital project.



J.W. Powell Specific Plan Study

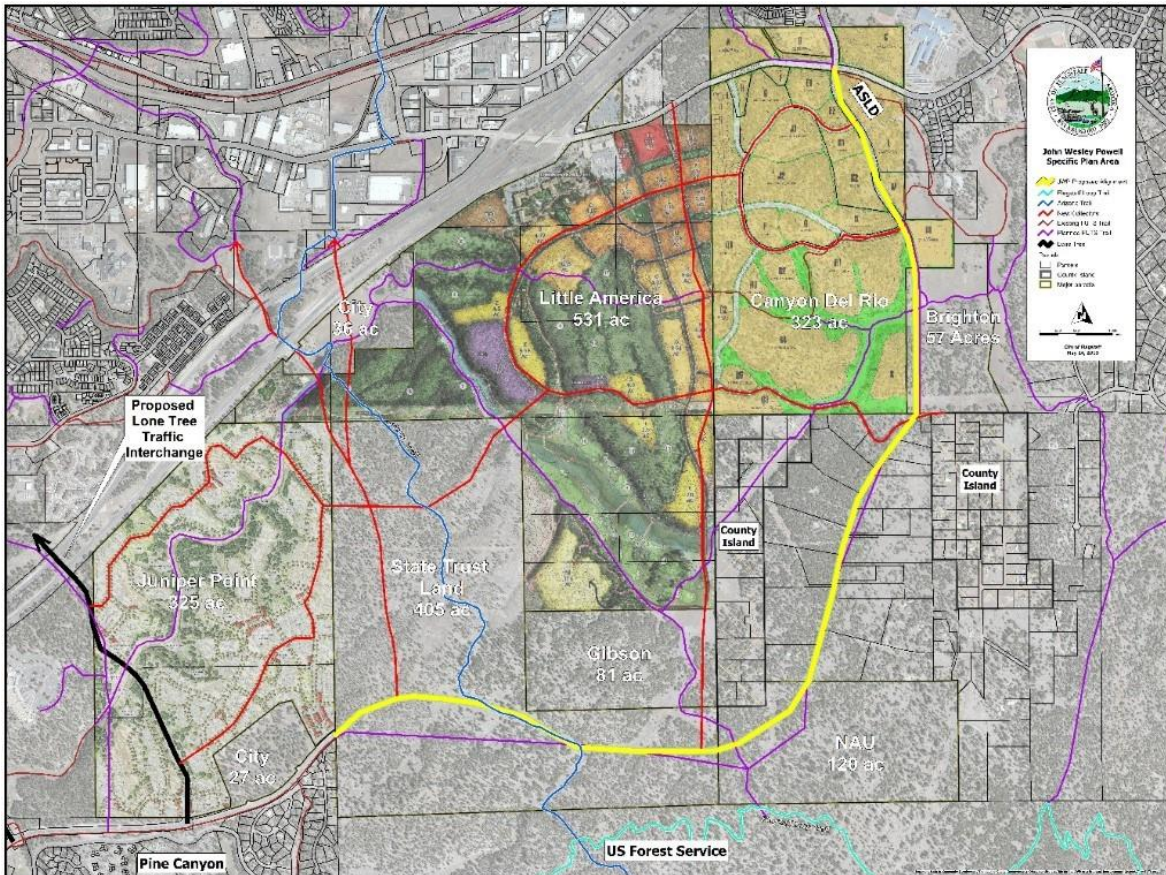
PHASE: PLANNING

FUND: GENERAL GOVERNMENT & TRANSPORTATION TAX

Description – The purpose of the John Wesley Powell Specific Plan Study (Study) is to develop a specific plan to guide the future private development of public infrastructure, utilities and facilities. Phase 1 of the project is the conceptual design of the future public infrastructure (roads), public utilities and facilities location analysis. The conceptual design is required to meet the full City infrastructure standards including street improvements, potable water, sanitary sewer mains, storm drain systems, street lighting and associated appurtenances. Phase 1 of the Study includes a sanitary sewer system master plan for the area. A water system master plan was previously developed for the area. Phase 2 of the Study is development of the planning elements necessary to gain City Council approval of a Specific Plan amendment to the Regional Plan.

Project Update:

- Meetings were held with City Engineering, City Planning, and Peak to discuss land use model as well as the transition from Phase 1 (concept design) to Phase 2 (Regional Plan Amendment).
- Meeting to review potential Change Order with City Planning and City Engineering.
- Meeting took place with Peak Engineering, Swaback (subconsultant), City Planning, and City Engineering to discuss the needs and design for the land use model for the future JWP corridor and service area.
- Update to City Council coming this fall, currently scheduled for October 27th.



Proposed alignment of new J.W. Powell Blvd. and Fourth Street; denoted by yellow line

Sunnyside Phase 6 – Second Avenue

PHASE: DESIGN

FUND: GENERAL GOVERNMENT

Description – This project improves stormwater drainage, rebuilds the asphalt roadway surface, and constructs sidewalks and driveways along one block of Second Avenue, between West & Center Streets, in Sunnyside.

Project Update:

- Peak Engineering is working to finish 100% (final) plans.
- This project does not currently have funding for construction.



Extent map of the Sunnyside Phase 6 – Second Avenue Project

City of Flagstaff Municipal Court

PHASE: CONSTRUCTION

FUND: GENERAL GOVERNMENT

Description - The City of Flagstaff Municipal Court Project is a 40,000 SF facility that will provide full user services to the City Court, the City Prosecutor's Office, and the public. It is located two blocks north of the existing Court facility, at 101 W. Cherry. Amenities include: four court rooms, one hearing room, administrative staff offices for the Court and Prosecution, in-custody detention and processing, and customer service facilities

Project Update:

- The Staff Elevator and the Inmate Elevator banks are substantially complete. The crews are working on the final Lobby Elevator.
- Mechanical/Electrical/Plumbing is wrapping up on the third floor, making way for completion of drywall.
- Final exterior masonry continues.
- Interior finishes such as bathroom floor tile and final paint are continuing on the first and second floors.
- First floor and second floor window installation and drop ceiling grid continues.
- Some ceiling lights are operational on the first floor.
- Exterior site work such as sidewalk ramps and retaining walls are ongoing.
- Stucco at parapets continues.
- Finish millwork continues in the first and second floor court rooms.
- Staff continues to work with KCS regarding COVID-19 related delays. The project is experiencing delays in addition to what was communicated to Council in late June and we are now anticipating a late September move-in with operations starting the first week of October. Staff is working with KCS to finalize project completion dates and will send a detailed update to Council under separate cover shortly.



Lobby windows are installed.



Court Room millwork – Judge's Bench



Sally Port area at the south of building



Staff Elevator is substantially complete

6

Fourth Street Reconstruction

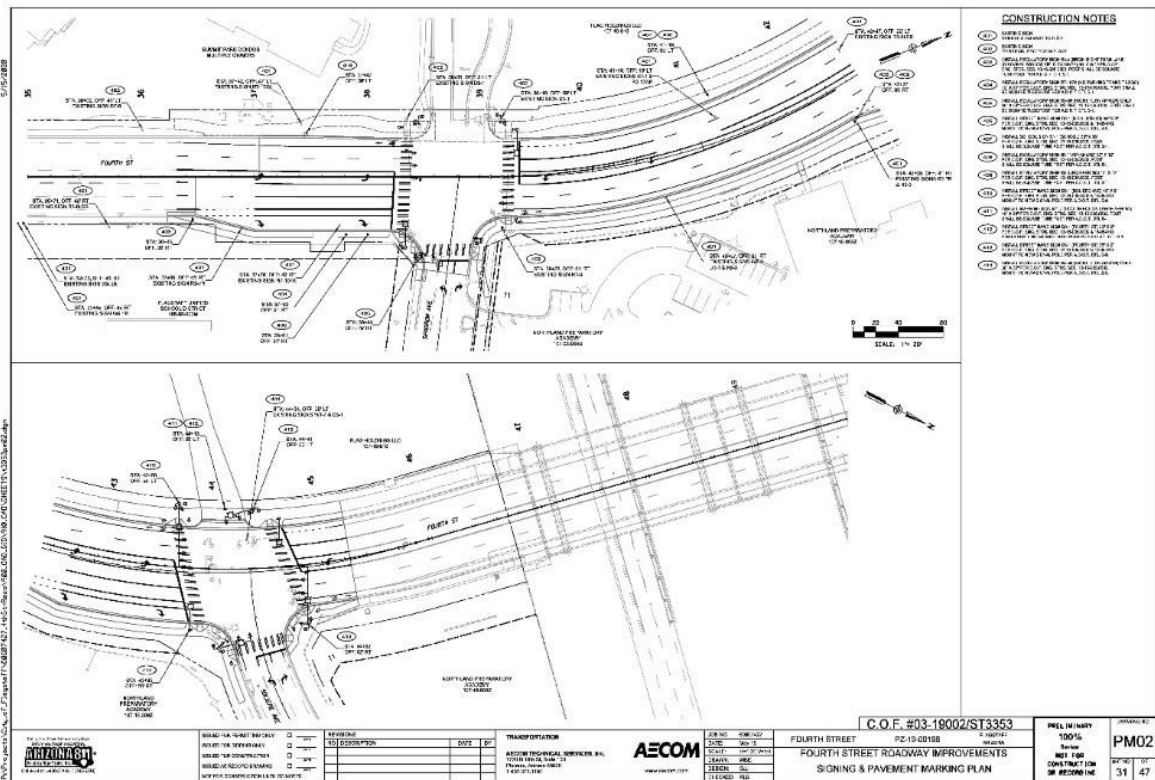
PHASE: DESIGN

FUND: TRANSPORTATION TAX

Description – The project is on Fourth Street from the Soliere Avenue intersection, southerly to just past the Sparrow Avenue intersection. The work will construct a new pavement section with two northbound and two southbound lanes and a center turn lane, northbound dedicated right turn lanes from Fourth Street onto Sparrow Ave. and onto Soliere Avenue, new streetlights, new traffic signals at Soliere Avenue, new fire hydrants, new 12” water main and new 8” water main, curb and gutter and new sidewalk. The reconstruction work will connect with the bridge replacement project.

Project Update:

- Final comment resolution is underway.
- Construction Award will be brought to Council for their consideration in fall 2020.
- Underground utility work is targeted to begin in late fall 2020 with remainder of the work occurring in spring 2021.



8

La Plaza Vieja Traffic Calming

PHASE: DESIGN

FUND: TRANSPORTATION TAX & HOUSING [CDBG] ALLOCATION

Description – The project is assisting the neighborhood by improving pedestrian safety of crosswalks, sidewalks, bike lanes and storm drainage at the Kingman Street and Florence St./Malpais Ln. intersections with Clay Avenue.

Project Update:

- Capital Improvements is assisting Comprehensive Planning.
- Design plan development is approximately 60% complete.



Conceptual Plan of Proposed Improvements

9

I-40 / Fourth Street Bridge Replacement

PHASE: CONSTRUCTION

FUND: TRANSPORTATION TAX

Description - A partnership with ADOT, the I-40/Fourth St. Bridges Project will replace the existing two travel lane bridges across the interstate with new bridges accommodating four travel lanes, a center median/turn lane, bike lanes, FUTS trail and pedestrian/bike path. A bridge slide will be utilized to reduce closures of Fourth St. from 3-4 months to approximately 17 days. The project is being administered by ADOT and the total City financial commitment is \$8,854.644.

Project Update:

- Detours of I-40 (utilizing median crossovers) are expected for the coming weeks.
- Bridge slides for both bridges and work to connect the bridge sections and grade approaches was completed.
- Fourth Street was reopened on August 3rd as planned.
- Work will continue into October for final project completion.



Fourth St. Bridge – Before bridge slides



Fourth Street Bridge – Just Before Opening to Traffic

10

Industrial Drive and Fanning Wash Improvements

PHASE: CONSTRUCTION

FUND: TRANSPORTATION TAX

Description – The project is constructing the third phase of the Industrial Drive improvements. The work will bring this segment up to standard as a minor arterial and truck route, build new 12” water main, new fire hydrants, streetlighting, sidewalk, bike lanes and dual 8.5’ diameter pipes to convey Fanning Wash stormwater beneath the new 42’ wide roadway.

Project Update:

- The project is complete, and road is open to the traveling public.



Roadway During Construction & Final Improvement

11

Sheep Crossing FUTS Trail

PHASE: CONSTRUCTION

FUND: TRANSPORTATION TAX

Description – The Sheep Crossing FUTS Trail connects the Ponderosa FUTS Trail on the east end, just south of the Ponderosa Trails Subdivision, and the Sinclair Wash FUTS Trail on the west end. The western portion of the trail is in Fort Tuthill County Park and intersects the County’s Soldiers Trail. Furthermore, this 0.74-mile trail is a connecting portion of the greater 44-mile Flagstaff Loop Trail. This trail utilizes two concrete box culverts for passage under Highway 89A and Interstate 17.

Project Update:

- Placed drainage pipe (corrugated metal pipe) and placed concrete collars.
- Continued the placement of FUTS fill on the trail to prepare for the subgrade material.
- Earthwork finished up on the Lower Embankment on USFS lands.
- The I-beam was removed from the southern tunnel lightwell and preparation is underway to cap in place.
- Poured three sections of concrete on County Lands; including ramps with truncated domes at the intersection of Infantry Drive.



This color was selected in partnership with the US Forest Service and Coconino County. Note the earth tone which matches the background.



Far western portion of the trail at the intersection with the Sinclair Wash FUTS Trail. This picture shows the color-integrated concrete.

12

Switzer Canyon Drive / Turquoise Drive Roundabout

PHASE: CONSTRUCTION

FUND: TRANSPORTATION TAX – SAFETY IMPROVEMENTS

Description – This is an intersection safety improvements project through the construction of a roundabout at the intersection of Switzer Canyon Drive / Turquoise Drive / Canyon Terrace Drive. The project is being managed and delivered by ADOT.

Project Update:

- ADOT and McDonald Brothers (contractor) performed the pavement corrections and various punch list items July 13 through July 16, 2020 that required roadway closure and corresponding detour route.
- The roadway was reopened to the traveling public on July 16 and corrective asphalt work is complete.
- A few items remain on the punch list, with materials for these items being 2-weeks out for delivery. Date for completion of these items is to be determined.



Corrected pavement looking north

13

Coconino Estates Improvements Phase I

PHASE: CONSTRUCTION

FUND: ROAD REPAIR & STREET SAFETY

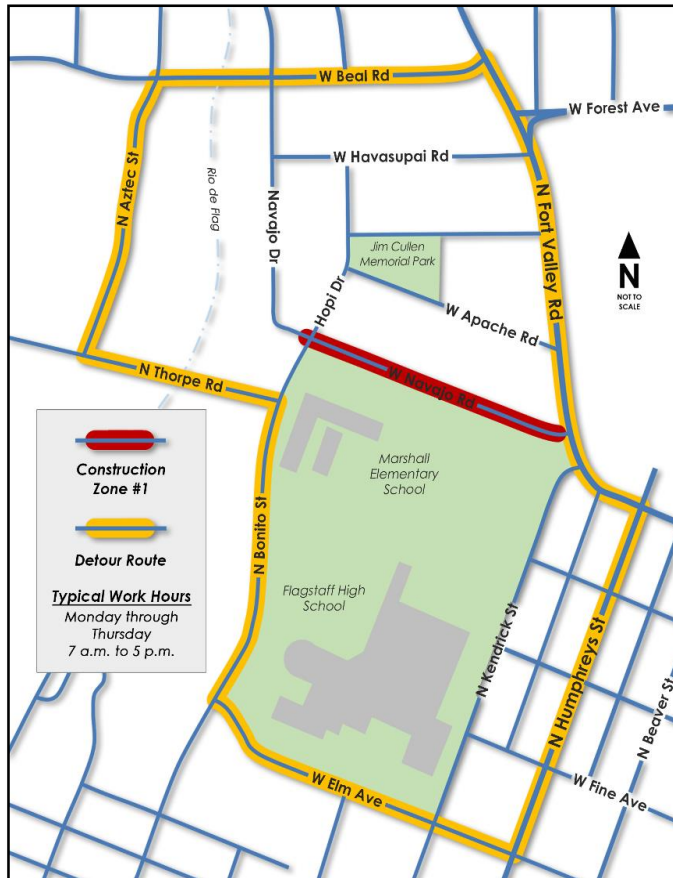
Description – This is a utility and roadway improvements project located in the Coconino Estates neighborhood on Beal Road from Rockridge to Fort Valley, Navajo Drive from Navajo Road to Murray, Whipple Road from Navajo Drive to McMillan, and Navajo Road from Navajo Drive to Fort Valley. Improvements on the streets generally consist of replacing existing infrastructure with new, including water and sewer mains, water and sewer services, fire hydrants, storm drains, street lights, the entire asphalt road way, and defective select edge improvements (curb & gutter, sidewalk, etc.), except for Whipple Road which will only receive a new water main and trench patch. There will also be new infrastructure added consisting of underground electric lines for streetlighting and sidewalk on both sides of the street where it does not currently exist on Beal Road, Navajo Drive south of Beal, and on Navajo Road.

Project Update:

- Testing the new sewer main and services in Navajo Road.
- Continuing construction of water main and services in Navajo Road.
- Beginning construction of water and sewer main in Navajo Road and Hopi Drive intersection.
- Navajo Road is closed to thru traffic.
- The Navajo Road and Hopi Drive intersection is closed to all traffic from July 20 – August 21.
- Detours are posted around the closures.
- During the Navajo Road and Hopi Drive intersection closure Mountain Line Bus route #5 will detour down Beal Road and Aztec Street to get from Fort Valley Road to Thorpe Road instead of its typical route down Navajo Road and Hopi Drive.
- Mountain Line’s stops 7 and 25 on route #5 will be closed during the Navajo Road and Hopi Drive intersection closure, riders have been informed to use stops 2 and 26 instead.
- Public flyer/notification is being delivered to residents on a weekly basis.



Sewer main replacement Navajo/Hopi looking south



Construction Zone and Detour Map

14

East Route 66 and El Paso Flagstaff Waterline Extension

PHASE: DESIGN

FUND: AGING INFRASTRUCTURE

Description – A utility improvements project that extends the 12” ductile iron waterline approximately 2,450 feet along Rt. 66, from the intersection of Test Dr. to the intersection of El Paso Flagstaff Rd. The waterline extension continues up El Paso Flagstaff Rd towards the Wildcat Treatment plant with approximately 1,600 feet of 8” ductile iron waterline. The project also calls for a paving of El Paso Flagstaff Rd. for the extents of the waterline extension.

Project Update:

- Civil plans are nearing completion.
- Plans are being coordinated with the proposed Industrial Park to the east, a private development, to provide them water access and to mitigate future pavement cuts into the new road.
- Tentative construction schedule is to construct the waterline extension along Rt. 66 and El Paso Flagstaff Rd. during winter of 2020/2021 followed by paving of El Paso Flagstaff Rd. in the Spring of 2021.



Intersection of Rt. 66 and El Paso Flagstaff Rd

looking North towards the Wildcat plant where the waterline will extend

15

Summit Water Project

PHASE: CONSTRUCTION

FUND: AGING INFRASTRUCTURE

Description - Approximately 3,300 ft of new waterline, water services, fire hydrants, and pavement reconstruction. The existing waterlines in this area range from 58 to more than 90 years old. The City intends to replace the water infrastructure and pavement on: S. Walnut St. from Santa Fe Ave. to Coconino Ave.; S. Sycamore St. from Santa Fe Ave. to Grand Canyon Ave.; S. Spring St. from Montvale Ave. to Grand Canyon Ave.; W. Summit Ave. from Santa Fe Ave. to end; and W. Santa Fe Ave. from Walnut St. to Thorpe Rd. Waterline only will be installed on W. Montvale Ave. from Santa Fe Ave. to end. This project is part of the City's ongoing aging water infrastructure replacement program.

Project Update:

- Construction is underway, beginning with Phase I on Walnut St.
- Work to begin on Sycamore St. next.
- Construction yard is set up on Coconino Avenue and sharing the overall space with the Humphreys Widening ADOT project.



Summit Water Project-Walnut St.

16

Industrial Waterline Replacement

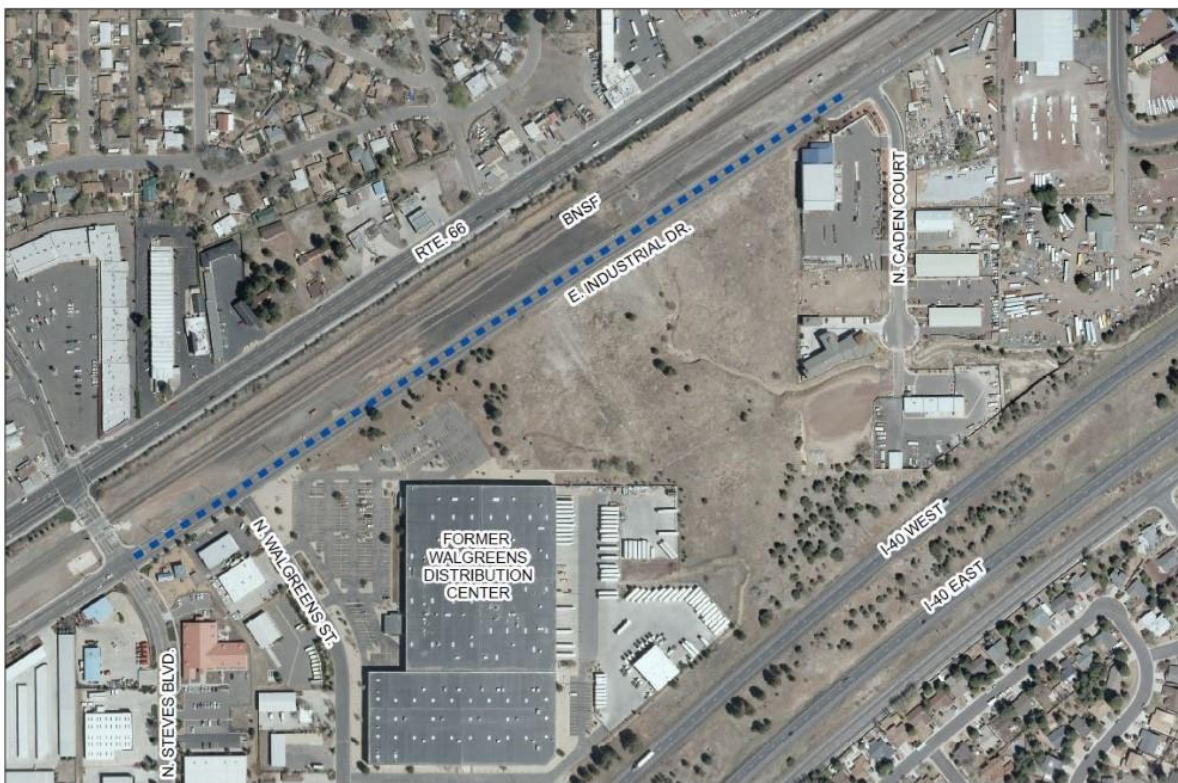
PHASE: CONSTRUCTION

FUND: AGING INFRASTRUCTURE

Description - A utility improvements project on E. Industrial Drive from approximately Steves Boulevard to N. Caden Court. The improvements consist of replacing approximately 2,050 feet of 16" ductile iron waterline pipe, associated paving for the waterline trench, removal and replacement of curb, gutter and valley gutter. The existing waterline in this area is over 60 years old. This project is part of the City's ongoing aging water infrastructure replacement program.

Project Update:

- Traffic Control Plans are in for review. Traffic impacts will involve lane shifts to accommodate the new waterline in Industrial Dr and mostly likely a brief full closure of the Steve's Boulevard and Industrial Drive intersection to tie the old main into the new main.
- Project start slated for August 10th.



INDUSTRIAL WATERLINE REPLACEMENT

1 inch = 300 feet

■■■■■■■■■■ WATERLINE REPLACEMENT



Vicinity Map

17

Fir Avenue Waterline Replacement

PHASE: CONSTRUCTION

FUND: AGING INFRASTRUCTURE

Description - The Project consists of installing 3,000 feet of new 8” Ductile Iron Pipe (DIP), 100 feet of new 6” DIP and associated roadway improvements. Included in the project will be new water services, fire hydrants and Air Release Valves. The project is in the Mount Elden Park Subdivision, north of Flagstaff Medical Center. The project is approximately three blocks of Fir Avenue and one block of Mesa Avenue. The existing water main was constructed in 1962 and needs replacement. This project is part of the City’s ongoing aging water infrastructure replacement program.

Project Update:

- 8” waterline installation continues in Mesa Drive.
- Approximately 850 feet has been installed with backfill.
- Associated water service taps have been installed on the new main along Mesa Dr.



Backfilling a trench