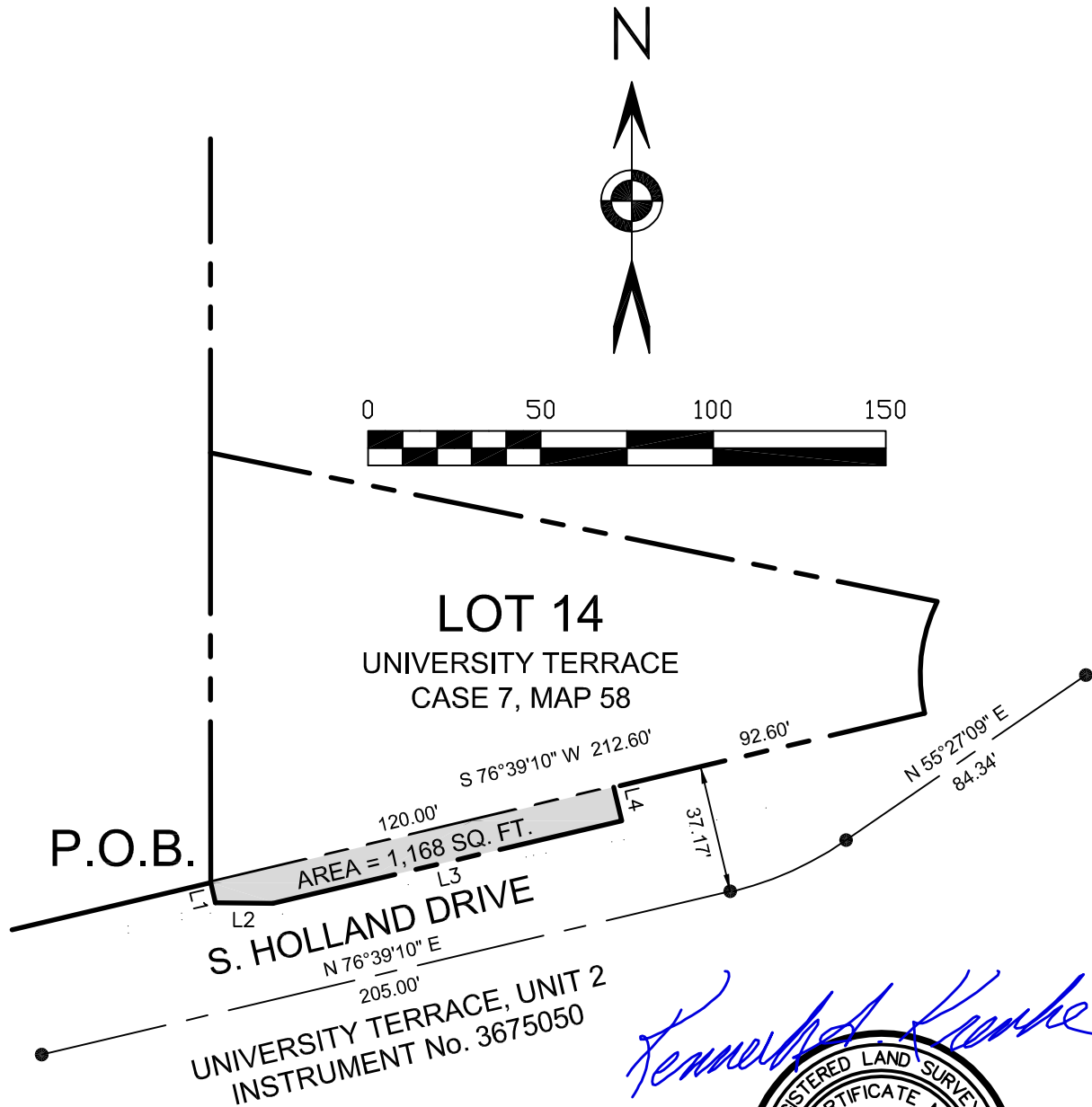




EXHIBIT "A-1"

A portion of South Holland Drive, University Terrace, Unit 2, as recorded in Instrument No. 3675050 of the Records of Coconino County, situated in the Northwest 1/4 of Section 32, Township 21 North, Range 7 East, Gila and Salt River Meridian, Coconino County, Arizona.



Kenneth A. Krenke



LINE	BEARING	DISTANCE
L1	S 13°20'50" E	5.99'
L2	S 89°25'21" E	16.68'
L3	N 76°39'10" E	103.81'
L4	N 13°20'50" W	10.00'

NES # 20-127