



**COMMUNITY DEVELOPMENT DIVISION**

**ENGINEERING SECTION**

Monthly Capital Projects Report  
November 2020

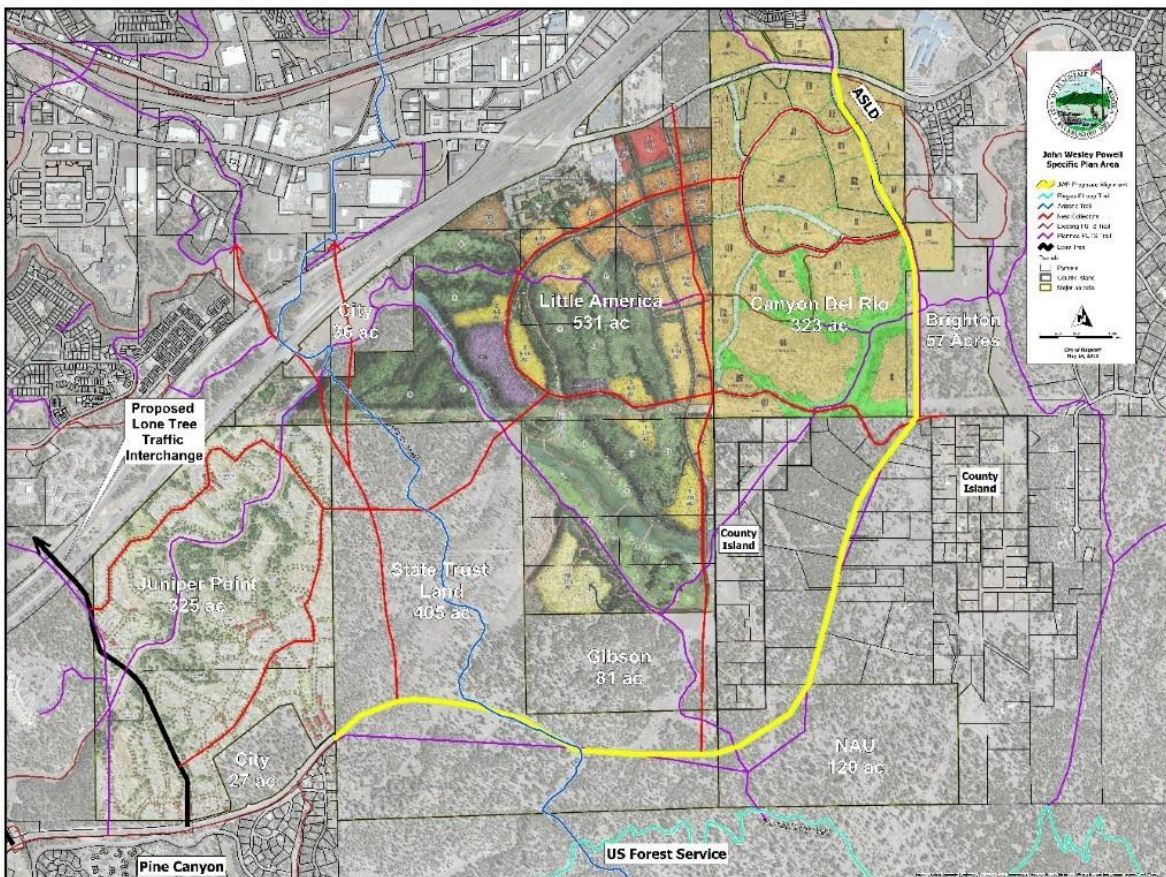
## J.W. Powell Specific Plan Study (PLANNING PHASE)

FUND: GENERAL GOVERNMENT & TRANSPORTATION TAX

**Description** – The purpose of the John Wesley Powell Specific Plan Study (Study) is to develop a specific plan to guide the future private development of public infrastructure, utilities and facilities. Phase 1 of the project is the conceptual design of the future public infrastructure (roads), public utilities and facilities location analysis. The conceptual design is required to meet the full City infrastructure standards including street improvements, potable water, sanitary sewer mains, storm drain systems, street lighting and associated appurtenances. Phase 1 of the Study includes a sanitary sewer system master plan for the area. A water system master plan was previously developed for the area. Phase 2 of the Study is development of the planning elements necessary to gain City Council approval of a Specific Plan.

### Project Update:

- City Staff and Peak Engineering met with AZ Game and Fish to discuss incorporation of wildlife crossings and corridors into 30% engineering design.
- Kickoff meeting for the focused public involvement component of corridor-affected parcel owners took place this week.



*Proposed alignment of new J.W. Powell Boulevard. and Fourth Street; denoted by yellow line*

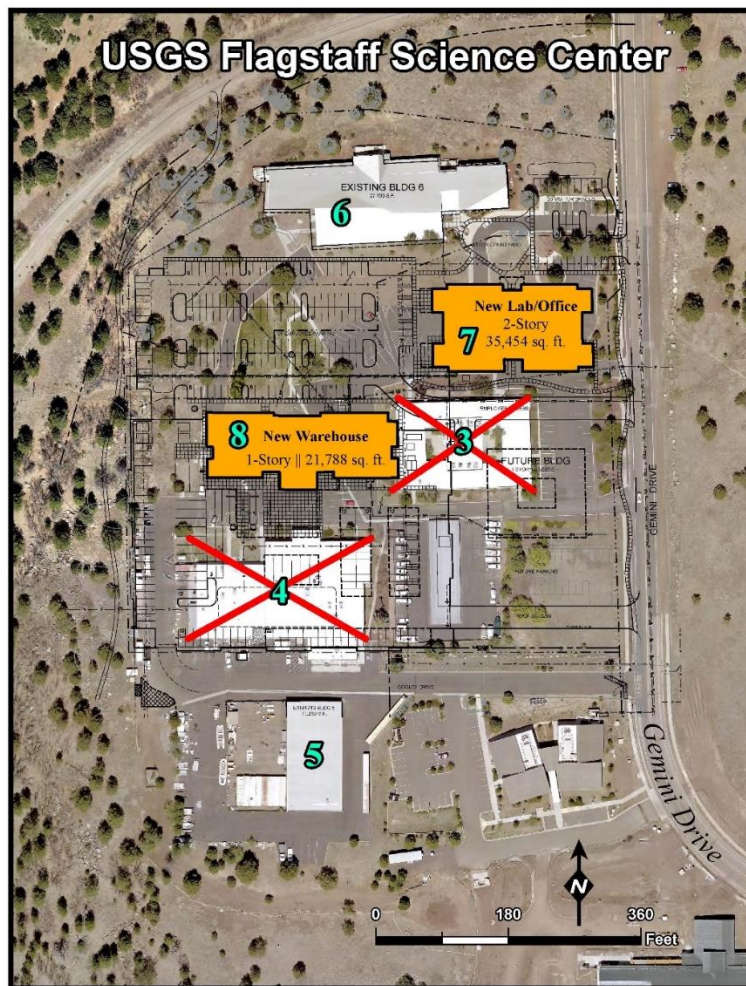
## USGS Flagstaff Science Center Campus - Build to Suit (DESIGN PHASE)

FUND: GENERAL GOVERNMENT

**Description** – This project will bring new improvements to the USGS Flagstaff Science Campus, located just south of Buffalo Park. There will be two existing buildings demolished (buildings 3 and 4), and two new buildings constructed (buildings 7 and 8). One of the new buildings will be a new lab and office facility while the second building will be a new warehouse. These two new buildings will require a minimum certification from the U.S. Green Building Council’s Leadership in Energy and Environmental Design (USGBC) of “Green Building Rating System” of “LEED™ Silver for New Construction (NC).”

### **Project Update:**

- City Staff is working to draft Request for Statement of Qualifications (RSOQs) to procure a design-build contractor.
- Lease agreement approved by Council on 15 September.



*USGS Flagstaff Science Center Campus.  
Buildings to be constructed are shown in orange.  
Buildings 3 and 4 (shown with red X) will be demolished.*

## **City of Flagstaff Municipal Court** (CONSTRUCTION PHASE)

FUND: GENERAL GOVERNMENT

**Description** – The City of Flagstaff Municipal Court Project is a 40,000 SF facility that will provide full user services to the City Court, the City Prosecutor’s Office, and the public. It is located two blocks north of the existing Court facility, at 101 W. Cherry. Amenities include: four court rooms, one hearing room, administrative staff offices for the Court and Prosecution, in-custody detention and processing, and customer service facilities

### **Project Update:**

- KCS continues to work to complete punch list items.
- The asbestos abatement of the old Court and Prosecutor’s buildings will be complete the week of November 9.
- Demolition of the old buildings is contingent on franchise utility relocations.



*Court Facility looking at the main entrance – northeast corner*

## Sunnyside Phase 6 – Second Avenue (DESIGN PHASE)

FUND: HIGHWAY USER REVENUE FUND (HURF)

Description – This project improves stormwater drainage, rebuilds the asphalt roadway surface, and constructs sidewalks and driveways along one block of Second Avenue, between West and Center Streets, in Sunnyside.

### Project Update:

- The final plans by Peak Engineering have been signed by appropriate city staff.
- This project does not currently have funding for construction.



*Extent map of the Sunnyside Phase 6 – Second Avenue Project*

# La Plaza Vieja Traffic Calming (DESIGN PHASE)

FUND: TRANSPORTATION TAX (SAFETY) & HOUSING [CDBG] ALLOCATION

**Description** – The project is assisting the neighborhood by improving pedestrian safety of crosswalks, sidewalks, bike lanes and storm drainage at the Kingman Street and Florence Street/Malpais Lane intersections with Clay Avenue.

## Project Update:

- Capital Improvements is assisting Comprehensive Planning.
- Consultant is working on the 90% plans and specifications.



Conceptual Plan of Proposed Improvements

## **Beulah Boulevard Extension/University Drive Realignment** (DESIGN PHASE)

FUND: TRANSPORTATION TAX (STREETS)

**Description** – This project extends the northern terminus of Beulah Boulevard to connect with University Drive. Furthermore, University Avenue (west of Milton) will be realigned to match up with University Drive (east of Milton). A new roundabout will be constructed where Beulah Boulevard and University Drive will intersect.

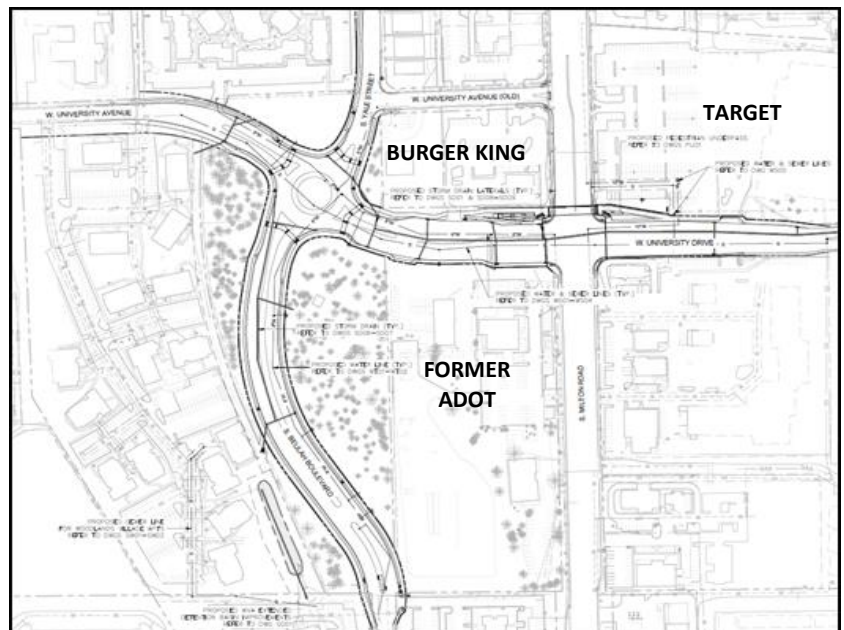
### **Project Update:**

- All structures and septic tanks have been demolished and removed from former Fresquez property.
- Abatement and demolition of the former ADOT Lab is complete and debris are being removed.
- Abatement on the former ADOT office building will be complete by November 6th; demolition will begin November 9<sup>th</sup>.
- City Staff, Vintage Partners, and SWI (Shephard Wesnitzer, Inc.) have signed the escrow instructions for final design of the roadway project. Funding of the escrow account should take place next week.



*Demolition of the former Fresquez residence after abatement; debris haul off to come.*

*Extent map of new Beulah and University Realignment – taken from 30% plans*



## **Quiet Zone Modifications (Elimination of Wayside Horns)** (DESIGN PHASE)

FUND: TRANSPORTATION TAX (STREET OPERATIONS)

**Description** – The City Council considered a citizen petition in July 2017 regarding the Quiet Zone and the sound level of the wayside horns on the eastside of town at the Steve’s and Fanning crossings. The wayside horns are operated by the City at both crossings and are an approved supplemental safety measure used in the absence of the train mounted horn. The other 3 crossings in Flagstaff that are a part of the Quiet Zone utilize One Way streets (Beaver and San Francisco) and a non-traversable median (Ponderosa Parkway) to satisfy the supplemental safety measure requirement for the Federal Railroad Administration’s requirements for Quiet Zones and therefore do not require wayside horns.

### **Project Update:**

- In response to the petition we measured the sound levels and the aiming of the wayside horns. After the wayside horns were confirmed to follow all regulatory standards, the City moved on to pursue other supplemental safety measures in an effort to eliminate the wayside horns. Efforts by City staff are ongoing in working towards solutions in collaboration with BNSF, Arizona Corporation Commission-Railroad Safety Group, ADOT, and various roadway consultants.
- Staff is currently preparing a CCR to update the Council on the detail of these supplemental safety measures and what we hope to accomplish on the eastside of town.



*Steves Railroad Crossing*

## **I-40/Fourth Street Bridge Replacement** (CONSTRUCTION PHASE)

FUND: TRANSPORTATION TAX (STREET & OVERPASS)

**Description** - A partnership with ADOT, the I-40/Fourth St. Bridges Project will replace the existing two travel lane bridges across the interstate with new bridges accommodating four travel lanes, a center median/turn lane, bike lanes, FUTS trail and pedestrian/bike path. A bridge slide will be utilized to reduce closures of Fourth St. from 3-4 months to approximately 17 days. The project is being administered by ADOT and the total City financial commitment is \$8,854.644.

### **Project Update :**

- Project is almost complete.
- Punchlist work will continue into late October for final project completion.
- Working with APS to get streetlights energized.
- The City has installed delineators along closed southbound lane.



*Fourth St. Bridge – Construction approaches completion*

## **Sheep Crossing FUTS Trail** (CONSTRUCTION PHASE)

FUND: TRANSPORTATION TAX (FUTS)

**Description** – The Sheep Crossing FUTS Trail connects the Ponderosa FUTS Trail on the east end, just south of the Ponderosa Trails Subdivision, and the Sinclair Wash FUTS Trail on the west end. The western portion of the trail is in Fort Tuthill County Park and intersects the County’s Soldiers Trail. Furthermore, this 0.74-mile trail is a connecting portion of the greater 44-mile Flagstaff Loop Trail. This trail utilizes two concrete box culverts for passage under Highway 89A and Interstate 17.

### **Project Update:**

- Concrete approaches to tunnel have been poured and are curing.
- Guardrail along Beulah/89A is complete; including two tube rails over tunnel headwall.
- 10-barrel scupper is complete and FUTS fence safety rail is being installed at the East Portal (see picture below).
- Lighting is currently being installed on the inside of the tunnel.



*The 10-barrel scupper is complete on the east side and FUTS safety rail is being installed. Tarp/blankets in this picture are to protect the curing concrete from nighttime freezing temperatures.*

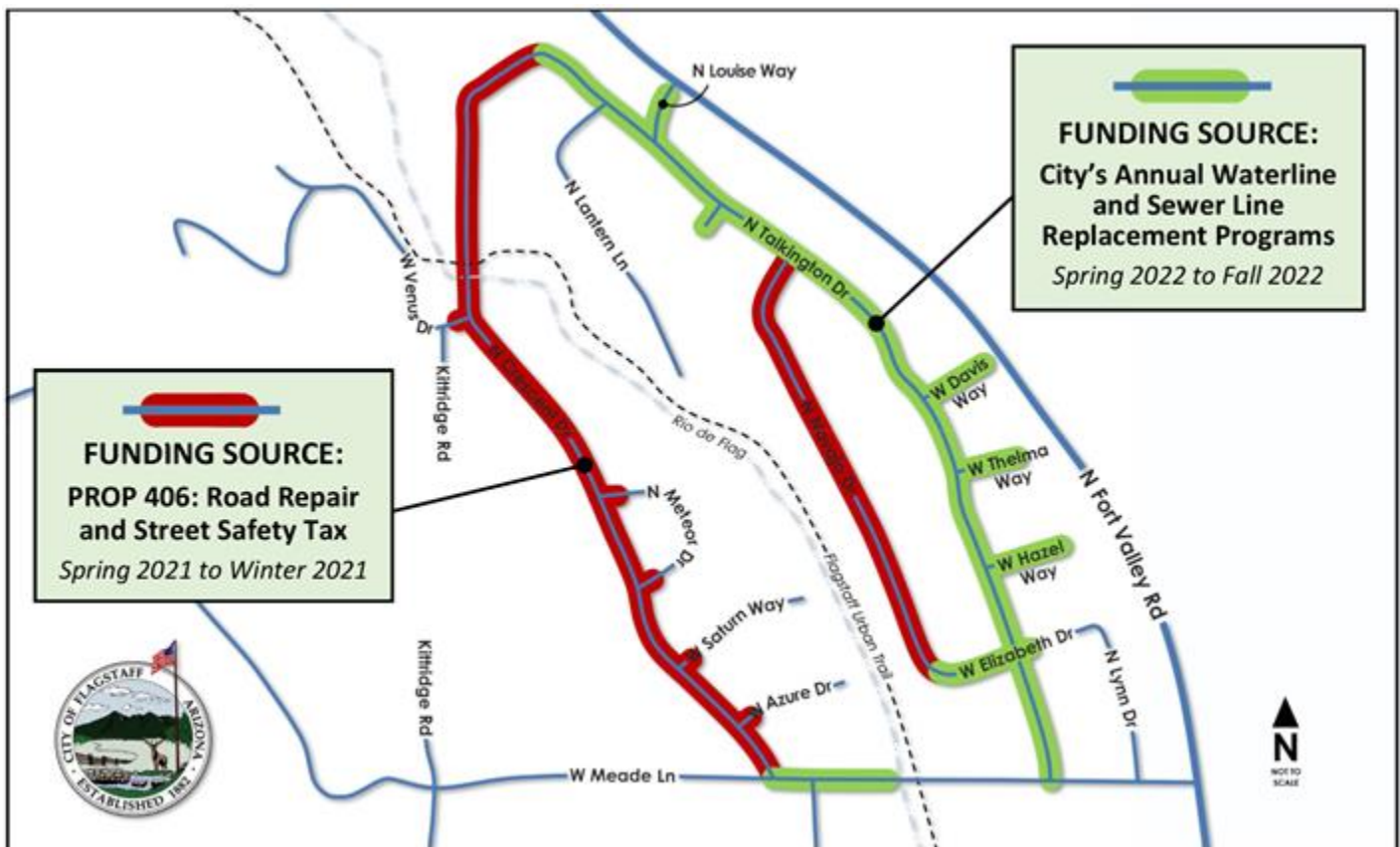
## Coconino Estates Improvements Phase II (DESIGN PHASE)

FUND: ROAD REPAIR & STREET SAFETY & ANNUAL WATERLINE AND SEWER LINE REPLACEMENT PROGRAMS

**Description** – This is a utility and roadway improvements project located on several streets in the Coconino Estates neighborhood as seen in the map below. Improvements on the streets generally consist of replacing all existing utility and roadway infrastructure. The utility improvements include replacing the existing water and sewer mains, water and sewer services, fire hydrants, and manholes. The roadway improvements include replacing the existing asphalt roadway, replacing rolled curb with vertical curb, constructing driveway ramps at driveway entrances, and replacing select sidewalk only where it currently exists on Crescent Drive. Sidewalk WILL NOT be installed where it does not currently exist. For additional information visit the Project website at [www.coconinoestates.com](http://www.coconinoestates.com)

### Project Update:

- A Project Presentation Video was posted to the Project website in lieu of conducting the typical community open house meeting ([www.coconinoestates.com](http://www.coconinoestates.com)).
- Final I (90%) are currently being reviewed by Staff.
- Project will be advertised in winter 2020 with construction to start spring 2021.
- The City will NOT permit the successful contractor of the Phase II improvements to utilize the same construction yard as is being used for the Coconino Estates Phase I project near Thorpe Park.



Coconino Estates Improvements Phase II Project Limits – Funding - Schedule Map

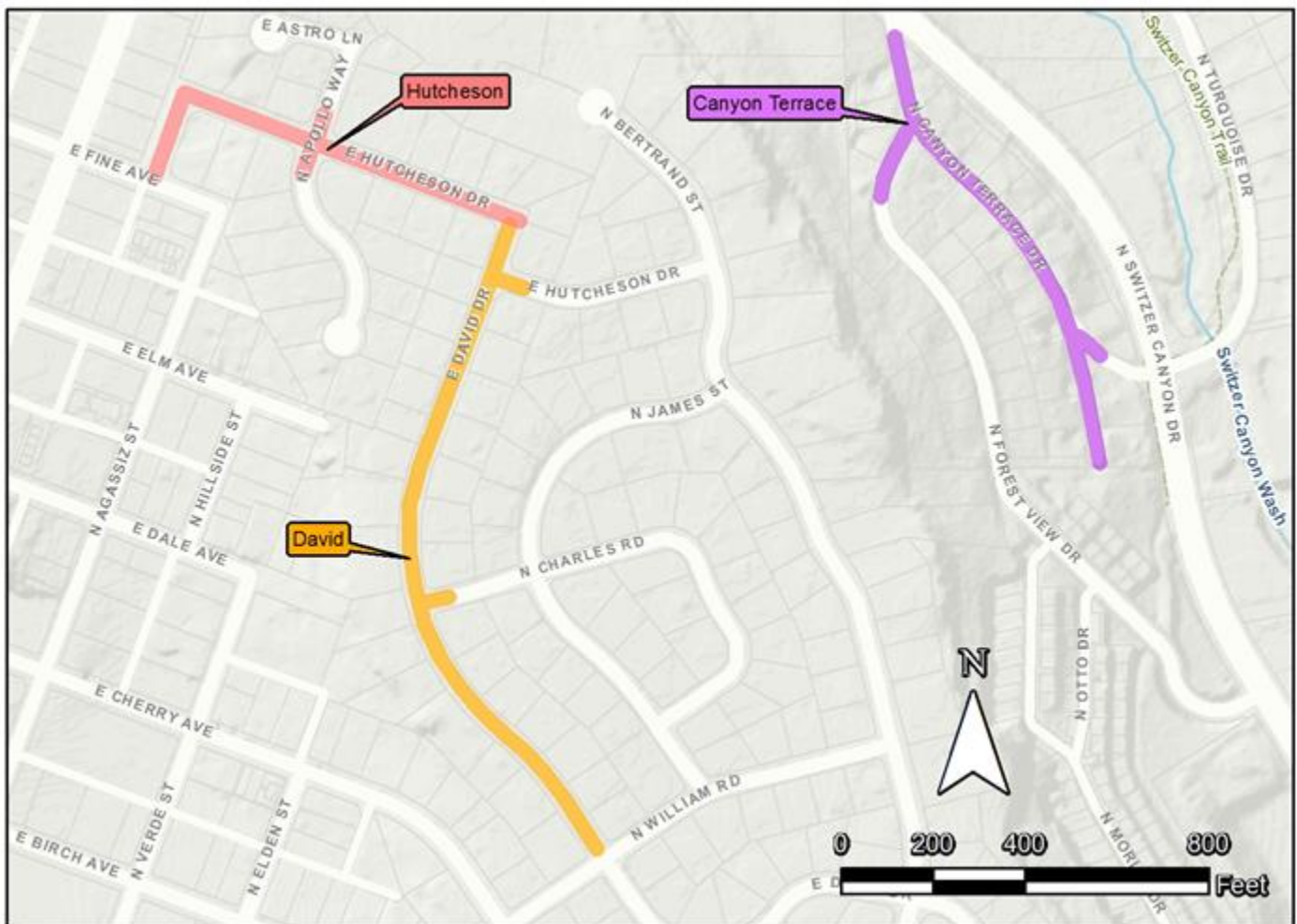
## West Flag Improvements Phase II (DESIGN PHASE)

FUND: ROAD REPAIR & STREET SAFETY

**Description** - This is a utility and roadway improvements project located on Hutcheson Drive, David Drive, and Canyon Terrace Drive as seen in the map below. Improvements on the streets generally consist of replacing all existing utility and roadway infrastructure. The utility improvements include replacing the existing water and sewer mains (except for on David Drive), water and sewer services, fire hydrants, and manholes. The roadway improvements include replacing the existing asphalt roadway, replacing rolled curb with vertical curb on David Drive, and replacing select edge improvements (sidewalk, curb and gutter, etc.).

### **Project Update:**

- The project was bid as one project this past spring but was pulled at the end of the bidding process given the economic and funding source uncertainties due to the COVID Pandemic.
- It was decided to split the Project into two separate Projects consisting of Hutcheson/David and Canyon Terrace. Staff is currently reviewing the Final II (100%) split plans.
- Project will be advertised as two separate projects in winter 2020 with construction to start spring 2021.



West Flag Improvements Project Limits Map

## **Coconino Estates Improvements Phase I** (CONSTRUCTION PHASE)

FUND: ROAD REPAIR & STREET SAFETY

**Description** - This is a utility and roadway improvements project located in the Coconino Estates neighborhood on Beal Road from Rockridge Fort Valley, Navajo Drive from Navajo Road to Murray, Whipple Road from Navajo Drive to McMillan, and Navajo Road from Navajo Drive to Fort Valley. Improvements on the streets generally consist of replacing existing infrastructure with new, including water and sewer mains, water and sewer services, fire hydrants, storm drains, street lights, the entire asphalt road way, and defective select edge improvements (curb & gutter, sidewalk, etc.), except for Whipple Road which will only receive a new water main. There will also be new infrastructure added consisting of underground electric lines for streetlighting and sidewalk on both sides of the street where it does not currently exist on Beal Road, Navajo Drive south of Beal, and on Navajo Road. For additional information visit the Project website at [www.coconinoestates.com](http://www.coconinoestates.com)

### **Project Update :**

#### **Navajo Road (Construction Zone #1)**

- Completed utility installations including new water and sewer mains, water and sewer services, and underground electric conduit.
- Completed curb and gutter, subgrade preparation, and paving including pavement corrections.
- Sidewalk, driveway installation, and utility adjustment work continues.
- Landscape restorations scheduled for spring 2021.

#### **Navajo Drive (Construction Zone #2)**

- Completed the re-compaction of the existing sewer main trench from Navajo Road to Havasupai.
- Sewer main installation continues north of Havasupai.
- Water main installation continues.

#### **Traffic Impacts**

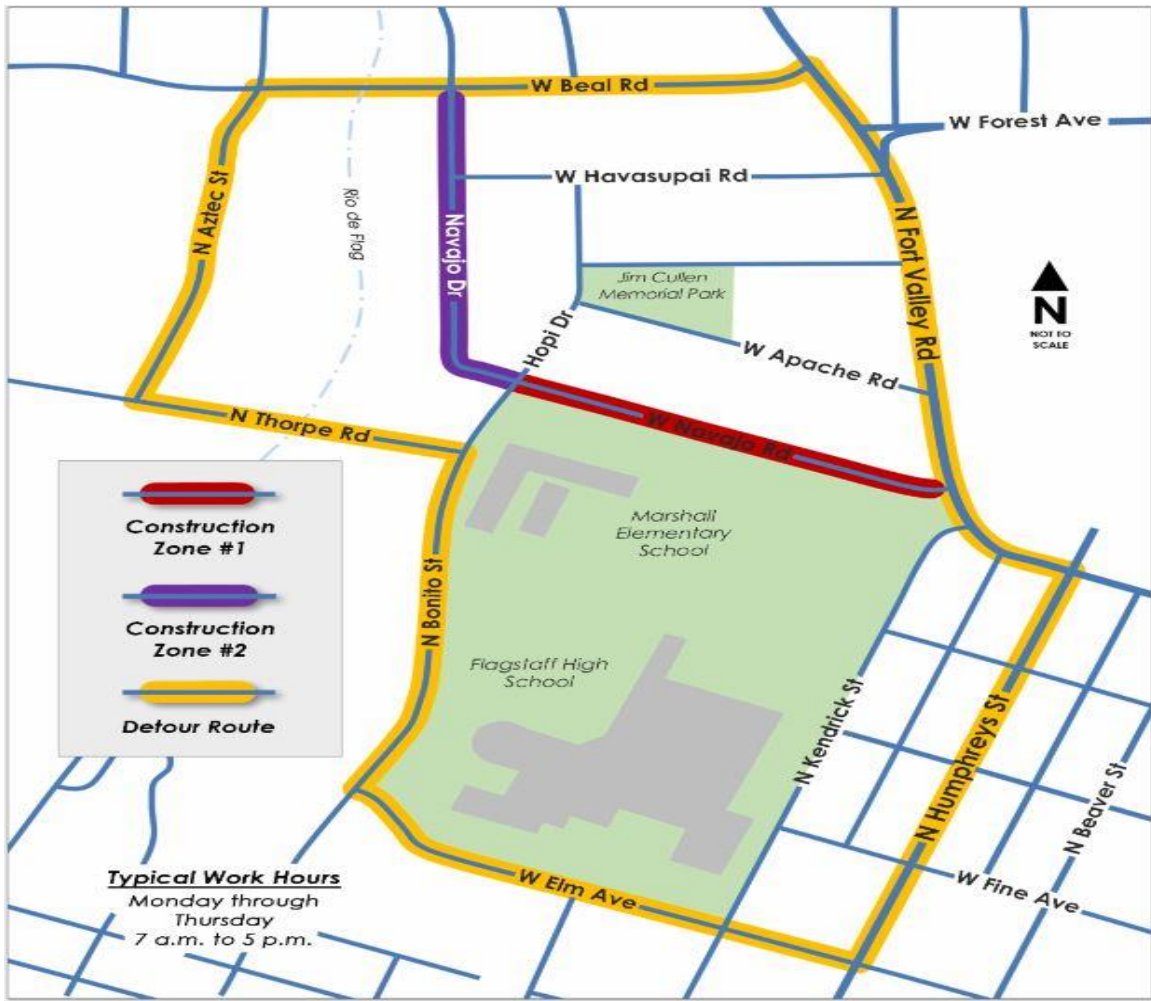
- Navajo Road and Navajo Drive are closed to through traffic.
- Detours are posted around the closures.
- Mountain Line Bus route #5 will detour down Apache Road and Hopi Drive to get from Fort Valley Road to Thorpe Road instead of its typical route down Navajo Road and Hopi Drive. No stops will be affected.

#### **Spruce Trees at 510 W. Beal Road**

- On 10/30 a certified Arborist investigated the area with a supersonic air knife to determine root structure within the area of the proposed improvements. It was determined by the certified Arborist that the most western spruce tree will be able to be saved by reducing the sidewalk width from five feet to three feet, and that the spruce tree closer to highway 180 will have to be removed. Work in this area is scheduled for Spring of 2021.



*Pavement correction operations looking east on Navajo Road*



Current road closures and detours

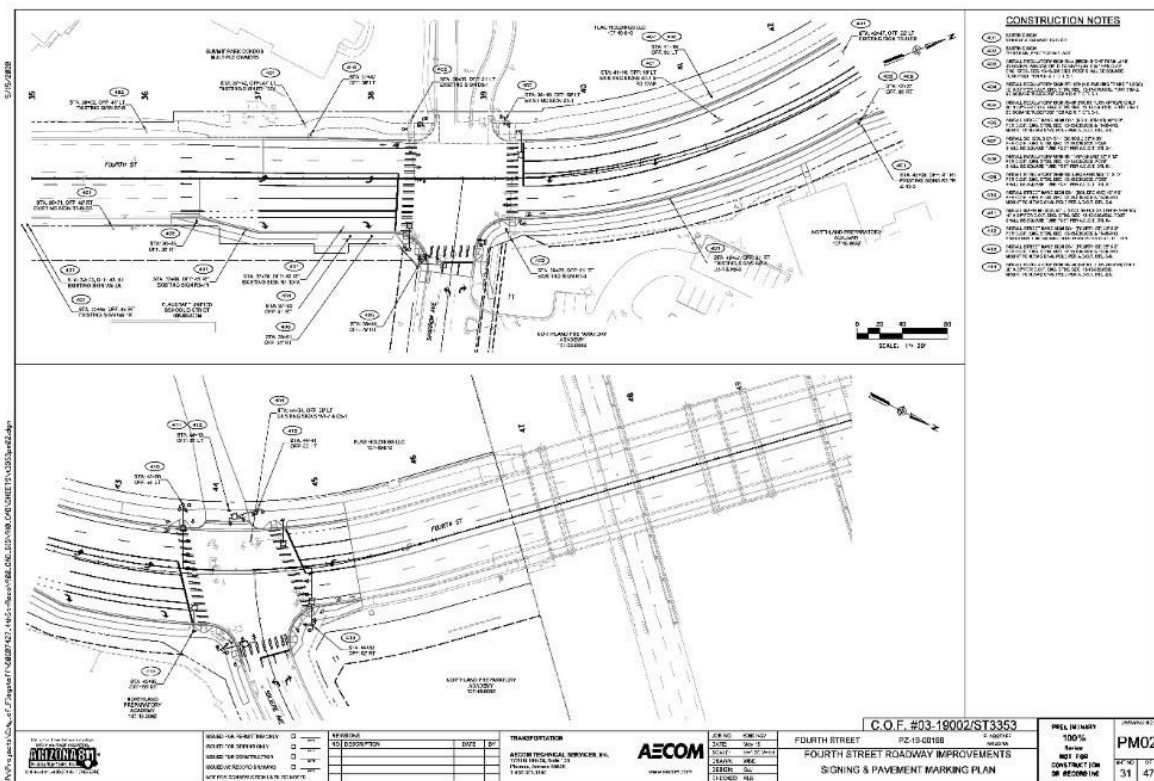
# Fourth Street Reconstruction (DESIGN PHASE)

FUND: TRANSPORTATION TAX (RENEWED TAX)

**Description** – The project is on Fourth Street from the Soliere Avenue intersection, southerly to just past the Sparrow Avenue intersection. The work will construct a new pavement section with two northbound and two southbound lanes and a center turn lane, northbound dedicated right turn lanes from Fourth Street onto Sparrow Ave. and onto Soliere Avenue, new streetlights, new traffic signals at Soliere Avenue, new fire hydrants, new 12” water main and new 8” water main, curb and gutter and new sidewalk. The reconstruction work will connect with the bridge replacement project.

## Project Update:

- Final plans have been approved.
- Project has been sent to Purchasing for advertisement.
- Project will be advertised in Fall 2020 with construction start in early 2021.
- Council consideration of contract award is anticipated at the December 15<sup>th</sup> Council Meeting.



Fourth Street Reconstruction Overview Plan

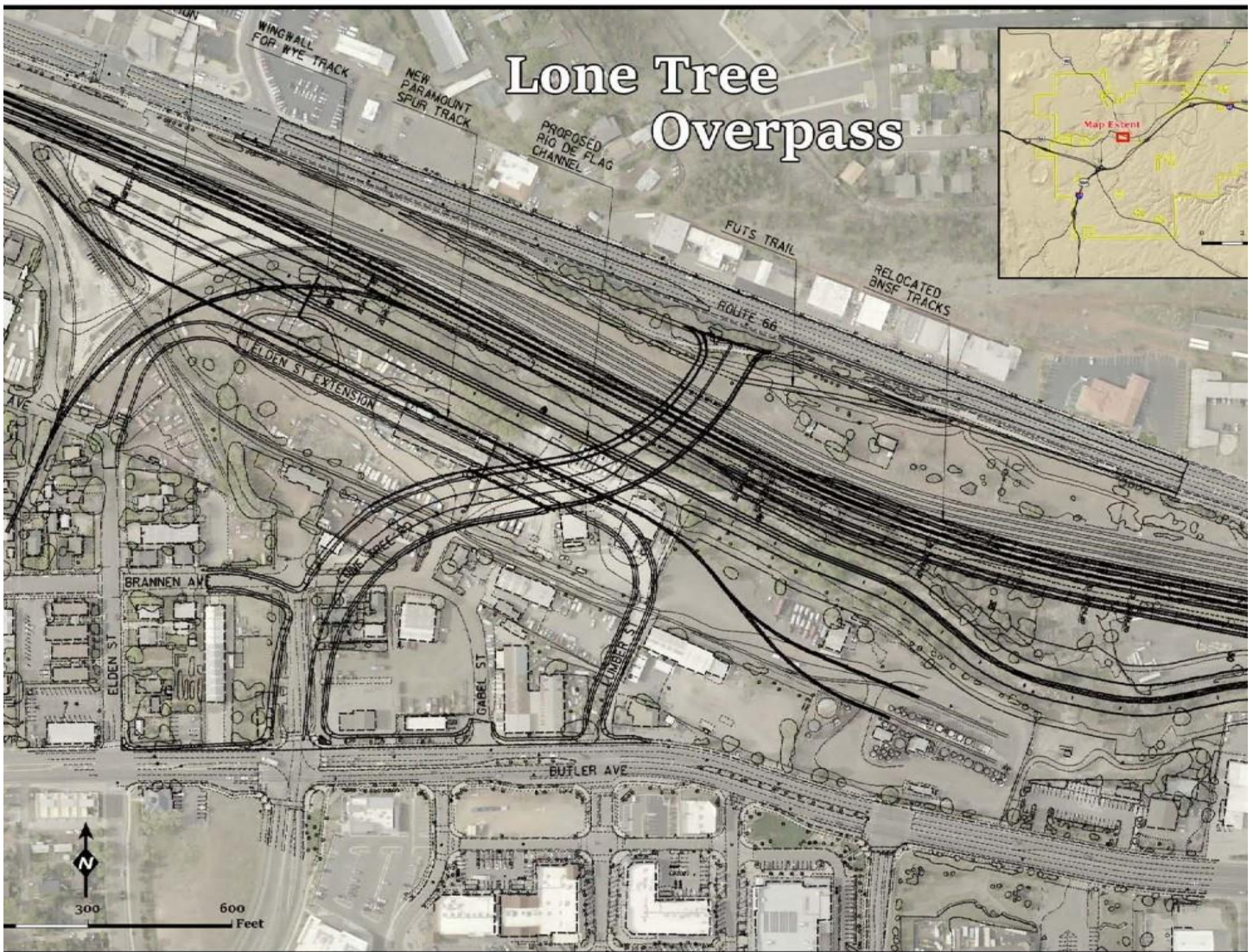
## **Lone Tree Overpass Project** (DESIGN PHASE)

FUND: TRANSPORTATION

**Description** – The Lone Tree Overpass Project will provide a grade-separated crossing over the future Rio de Flag drainage and the BNSF Railway corridor from Butler Avenue to Route 66. Funding for this project is provided through voter approved bonds as designated in the 2018 Proposition 420.

### **Project Update:**

- The City held interviews for three Design/Build teams on Thursday, November 5.
- The City is negotiating scope and fee for the first design-phase contract with the selected firm.
- A design-phase contract is anticipated to be presented to Council for approval in December 2020.



*Lone Tree Overpass Concept Design*

## **Library Entrance** (DESIGN PHASE)

FUND: BBB- BEAUTIFICATION

**Description** – Project to bring Library Entrance into ADA compliance with new handicap ramp and new overall vision for entrance. Public art will be incorporated into project and an Artist is being brought onto the design team. Project includes upgrades to landscaping, handicap parking, parking lot, and hardscape.

### **Project Update:**

- Artist selection is underway-Plan to award at Dec 2. City Council Meeting
- WLB Group is working on conceptual plans for entrance.
- Concepts will be presented to Adaptability Commission next week.



*Library Entrance Project-Existing Conditions*

## **East Route 66 and El Paso Flagstaff Waterline Extension** (DESIGN PHASE)

FUND: AGING INFRASTRUCTURE

**Description** – A utility improvements project that extends the 12” ductile iron waterline approximately 2,450 linear feet from the intersection of Test Dr. and Rt. 66 to the intersection of El Paso Flagstaff Rd. The waterline extension continues up El Paso Flagstaff Rd towards the Wildcat Treatment plant with approximately 1,600 linear feet of 8” ductile iron waterline. The project also calls for a repave of El Paso Flagstaff Rd. for the extents of the waterline extension.

### **Project Update:**

- Capital Staff is working with the Real Estate Manager to secure easements for the new waterline.
- A Professional Services contract was approved with SWI on 4/22.
- Civil Plans are under review and should be completed by early October.
- Plans are being coordinated with the proposed Industrial Park to the east, a private development, to provide them water access and to mitigate future pavement cuts into the new road.
- Tentative construction schedule is to construct the waterline extension along Rt. 66 and El Paso Flagstaff Road during winter of 2020/2021 followed by paving of El Paso Flagstaff Road in the Spring of 2021.



*Intersection of Rt. 66 and El Paso Flagstaff Road  
looking north towards the Wildcat plant where the waterline will extend to*

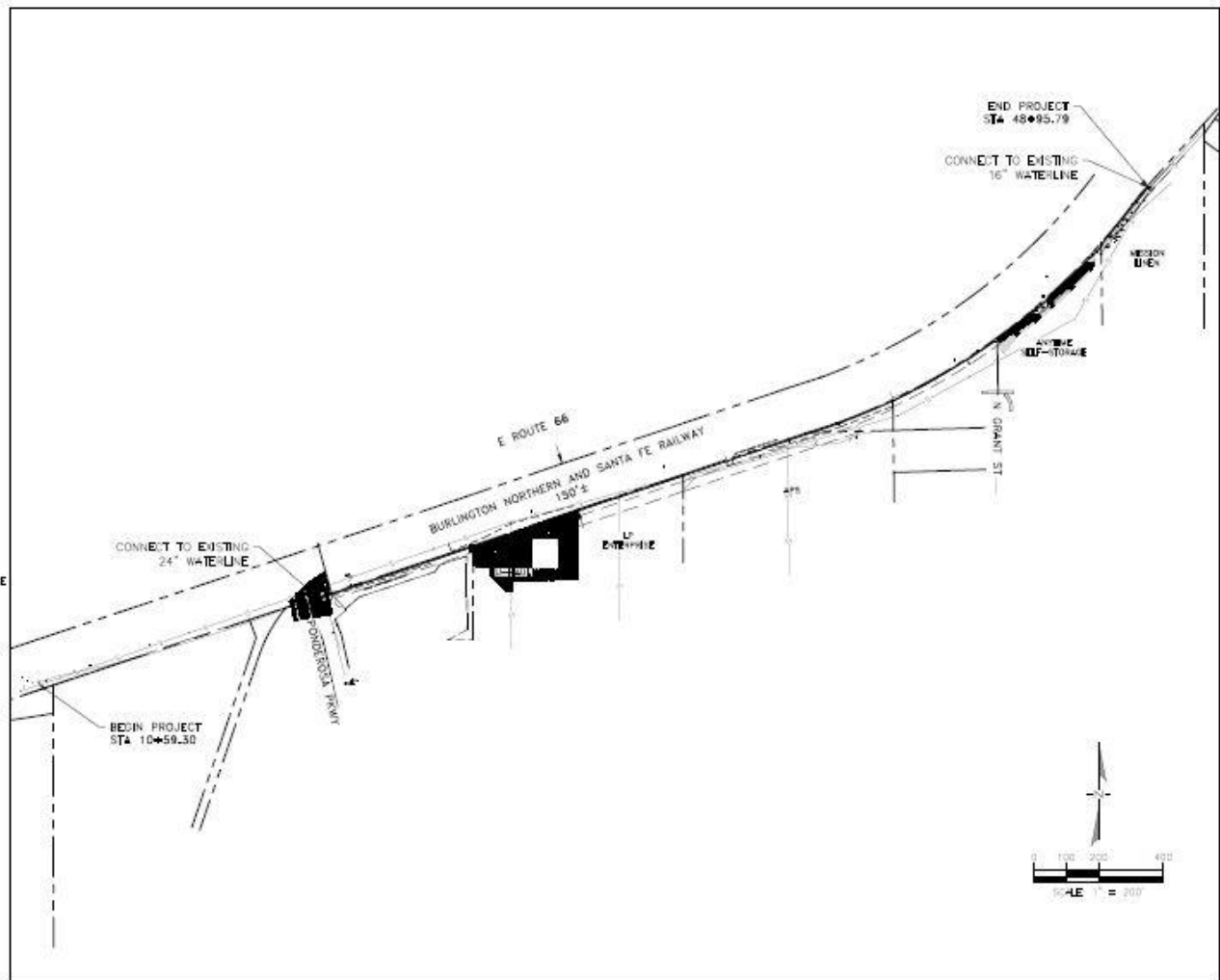
## Huntington Waterline Replacement (DESIGN PHASE)

FUND: AGING INFRASTRUCTURE

**Description** - The Project consists of installing 3,000 LF of new 16" DIP, and associated roadway improvements. Included in the project will be new water services, fire hydrants and Air Release Valves. The existing waterline in this area is over 60 years old. This project is part of the City's ongoing aging water infrastructure replacement program.

### Project Update:

- Plans have received approval to construct from ADEQ
- Plans are being routed for final approval with the City
- The bid package is being compiled for advertising
- Current working schedule has a proposed start of construction in late February of 2021



*Vicinity Map of improvements*

## Switzer Canyon Transmission Main Phase IV & V (Design Phase)

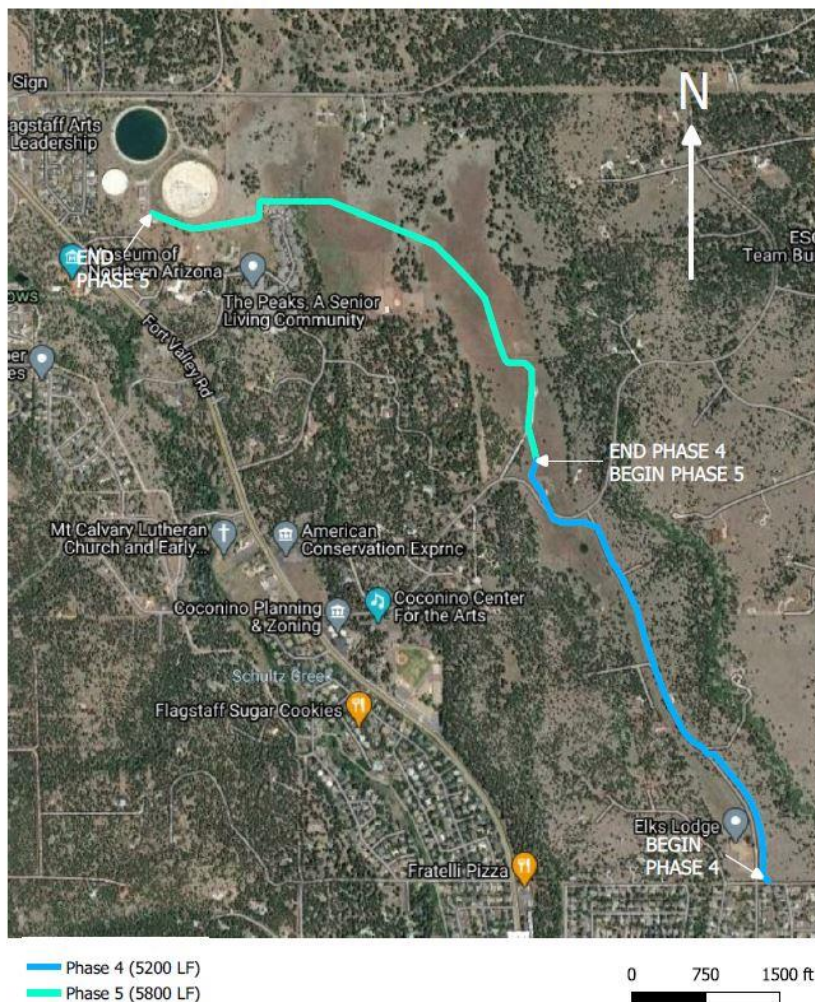
FUND: AGING INFRASTRUCTURE

**Description** – The Project consist of installing two new transmission mains, 24” and 16”, that will complete the distribution system, zone A and B, from the Downtown area to the City Reservoirs near Cheshire. The length of Phase IV and V is approximately 11,000 feet. The project is within City limits and the urban distribution service area within the County. Included in the project will be the two water mains with appurtenances, new bundled water meter/service locations and fire hydrants.

### Project Update:

- Phase IV is at a 60% design phase with the consultant.
- Property acquisition is underway with legal descriptions, environmental clearances and site assessments.
- Phase V is in the planning phase to define the final alignment.
- Construction of Phase IV is anticipated for 2021.
- Construction of Phase V is anticipated for 2022.
- Staff anticipates bringing to City Council for their consideration the *Out-of-City Water Service* property owner agreements in December 2020.

FIGURE 1 - SWITZER CANYON WATER LINE  
PHASE IV & V CURRENT ALIGNMENT



## **Fir Avenue Waterline Replacement** (CONSTRUCTION PHASE)

FUND: AGING INFRASTRUCTURE

**Description** - The Project consists of installing 3,000 feet of new 8" DIP, 100 feet of new 6" DIP and associated roadway improvements. Included in the project will be new water services, fire hydrants and Air Release Valves. The project is in the Mount Elden Park Subdivision, north of Flagstaff Medical Center. The project is approximately three blocks of Fir Avenue and one block of Mesa Avenue.

### **Project Update:**

- Concrete flatwork replacement has begun for approximately 50% of the project limits.
- New water service lines with meter tie-ins are complete for the entire project.
- Pavement replacement for the entire project has been completed.
- Project restoration measures have started for the project limits.
- New infrastructure will reduce failures of the existing water system resulting in flooding of private properties downstream of Fir Avenue and Mesa Drive.
- New infrastructure will also reduce the costly operation and maintenance of the existing water system by minimizing breaks and material failures.



*Pavement replacement at Marion Drive and Fir Avenue*

## **Industrial Waterline Replacement** (CONSTRUCTION PHASE)

FUND: AGING INFRASTRUCTURE

**Description** - A utility improvements project on E. Industrial Drive from approximately Steves Boulevard to N. Caden Court. The improvements consist of replacing approximately 2,050 feet of 16" ductile iron waterline pipe, associated paving for the waterline trench, removal and replacement of curb, gutter and valley gutter. The existing waterline in this area is over 60 years old. This project is part of the City's ongoing aging water infrastructure replacement program.

### **Project Update:**

- Crews are working today, 11/12, to make the last tie in from old to the new watermain. Crews will work through the weekend to prepare subgrade for final paving next week.
- The waterline system was pressure tested with passing results last week.
- Traffic control is in place with a south lane shift on Industrial Dr. from Caden Court to Walgreens St.



*Crews installing last tie in from new watermain to old watermain., Industrial Dr., looking west*

## **Summit Waterline Replacement** (CONSTRUCTION PHASE)

FUND: AGING INFRASTRUCTURE

**Description** - Approximately 3,300 ft of new waterline, water services, fire hydrants, and pavement reconstruction. The City intends to replace the water infrastructure and pavement on: S. Walnut Street from Santa Fe Avenue to Coconino Avenue; S. Sycamore Street from Santa Fe Avenue to Grand Canyon Avenue; S. Spring Street from Montvale Avenue to Grand Canyon Avenue; W. Summit Avenue from Santa Fe Avenue to end; and W. Santa Fe Avenue from Walnut Street to Thorpe Road. Waterline only will be installed on W. Montvale Avenue from Santa Fe Avenue, to end. The existing waterlines in this area range from 58 to more than 90 years old. This project is part of the City's ongoing aging water infrastructure replacement program.

### **Project Update:**

- Water tie-ins on Walnut St., Sycamore St., and Summit Ave. completed.
- Final pavement installation scheduled for next week on Walnut St. and Sycamore St.
- Trench patching installed on Santa Fe Ave.
- Select replacement of sidewalk panels and curb and gutter.
- Construction yard is set up on Coconino Avenue and sharing the overall space with the Humphreys Street ADOT project.



*Summit Water Project-Trench patching on Santa Fe Avenue*

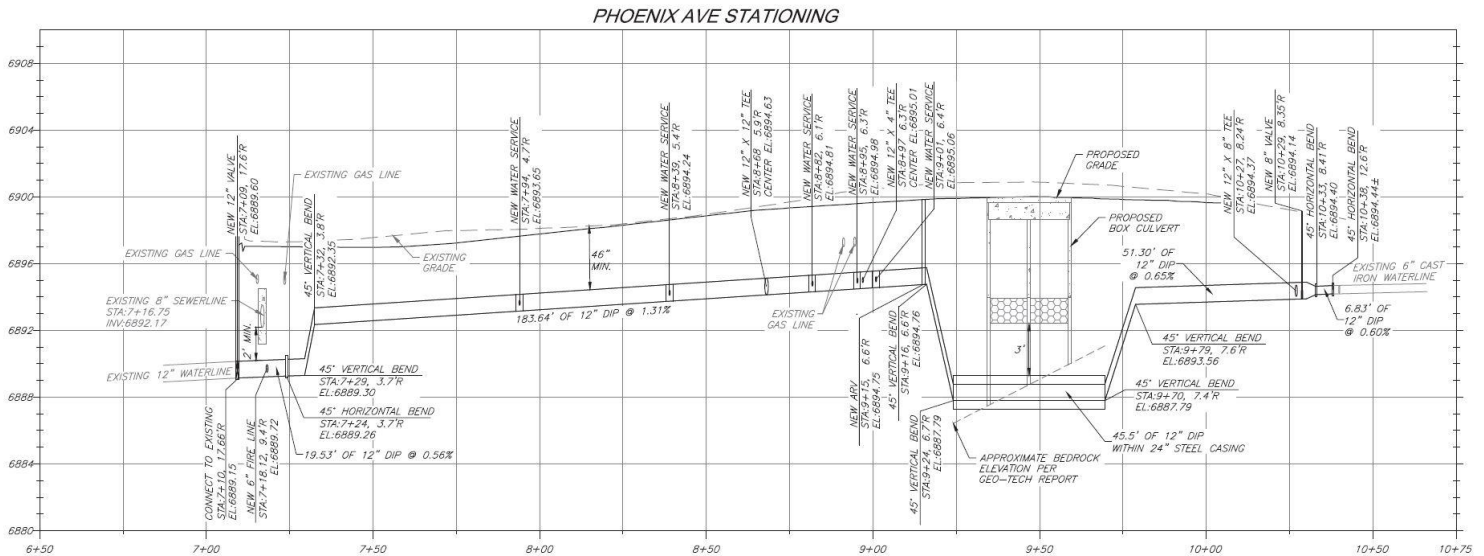
# Phoenix Avenue Culvert and Waterline Replacement (DESIGN PHASE)

FUND: STORMWATER & AGING INFRASTRUCTURE

**Description** - The project will replace the Rio de Flag box culvert (which runs beneath Phoenix Avenue and the Zani building) with the appropriate conveyance structure and will update a 12" water main in Phoenix Avenue from Mikes Pike to Beaver Street. Phoenix Avenue will be reprofiled, roadway surface drainage issues will be addressed, edge improvements will be made as needed and the roadway will be repaved. The existing waterline in this area is over 114 years old. This project is part of the City's ongoing aging water infrastructure replacement program.

## Project Update:

- First review of the Civil Plans has been completed and sent back to the design engineer for revisions.
- A meeting was held in late September with city staff and the consulting Structural Engineer to discuss plans for rehabilitating the beam under Zani.
- A meeting was held in Late September with city staff and the design engineer to discuss strategy on construction logistics to mitigate impacts to businesses in the area.
- The 90% plans have been submitted for city review.
- The working schedule has bid solicitation in mid to late December 2020.
- Construction would be targeted to begin in early Spring of 2021.



Cross section of Phoenix Ave. showing new 12" DIP waterline and box culvert

## **Rio de Flag Flood Control Project** (DESIGN PHASE)

FUND: STORMWATER & AGING INFRASTRUCTURE

**Description** - Design consists of channel improvements along both the Rio de Flag and Clay Avenue Wash channels, and the construction of an underground concrete confluence structure. The channelization of Clay Avenue Wash channel will begin at an upstream inlet structure transitioning into an open rectangular concrete channel and then transitioning into an underground reinforced concrete box channel ending at the confluence on Clay Avenue Wash and Rio de Flag, approximately 5,000 feet. The channelization of the Rio de Flag channel will begin at an upstream inlet structure transitioning into an underground reinforced concrete box channel with an open earthen channel above (composite channel) and then transitioning into the underground confluence structure. From the confluence structure, the Rio de Flag channel will be rerouted out of the Southside, along the BNSF railroad tracks, then transitioning into an open trapezoidal channel with riprap placed on invert and side slopes. Work includes widening and deepening by large scale excavation, grading, and compacted fill; disposal of excess excavated material; installing over 1 mile of underground reinforced concrete box channel, riprap slope protection, critical underground concrete confluence hydraulic structure, drainage culverts, many utility relocations, landscaping & mitigation planting, asphalt concrete paving, access ramps, safety railing and appurtenant work. Construction methods will include hard rock excavation during grading and utility excavation, groundwater dewatering, shoring, environmental cleanup & disposal and cut slope & trench stabilization.

### **Project Update :**

#### **100% plans status -Phase I & Phase II**

- Photo simulations for the Flood Wall, Composite Channel, Open Channel (Clay Wash) and Open Channel (Lower Reach) have been completed and posted on the project website.
- The link and web address for the Rio de Flag Public Information page is <https://www.flagstaff.az.gov/4189/Rio-De-Flag-Flood-Control>
- A virtual meeting room has been launched.

#### **Property acquisition status -Phase I**

- The City's consultant (Shephard Wesnitzer, Inc.) continues to work on the exhibits for property encumbrances. All the Phase I exhibits for the Lower have been completed. The Phase I exhibits for the Clay Avenue reach are nearly complete.

#### **BNSF Issues**

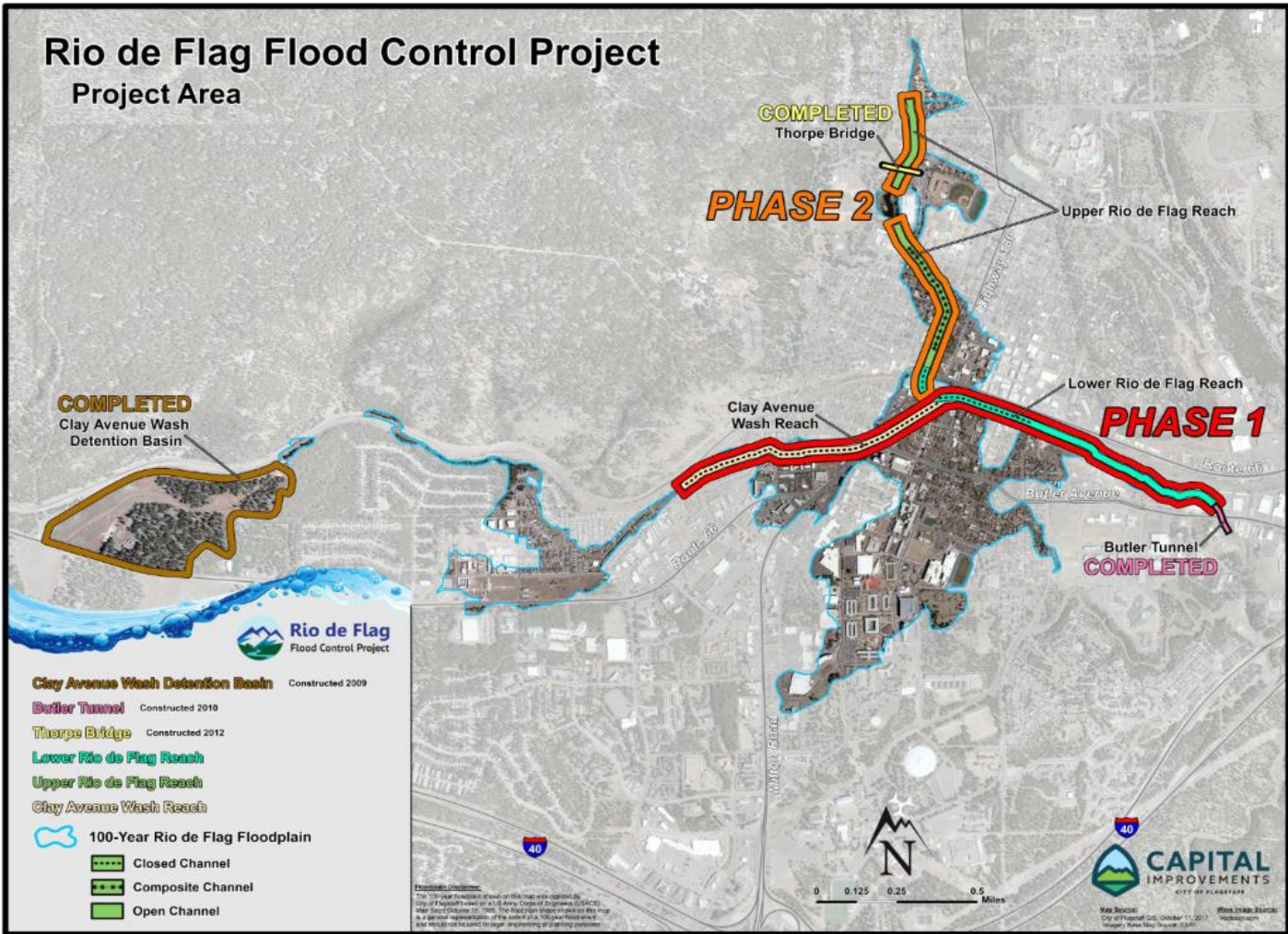
- City staff has made inquiries to BNSF's consultant for utilities that need relocation for the project.
- Technical Team Meeting including US Army Corps of Engineers, BNSF Railway and city staff was held on November 3<sup>rd</sup>.
  - BNSF indicated required mitigation measures associated with property acquisition and construction to include; Tunneling operations to provide track monitoring (1/4" maximum settlement) and resurfacing equipment; One leg on Wye in operation at all times; Relocation of a spur; Adequate compensation for land; Replacement of property for lessees; Replacement of other BNSF improvements that are impacted; Construction of a new siding track (somewhere in the city limits); Land and permits for siding and future 3<sup>rd</sup> Mainline Track; Relocation of all utility crossings and; Funded action plan by city for improvements to prevent grade crossing accidents and trespassers.

#### **Internal & external meetings**

- Staff held the weekly meetings for daily issues related to the project.
- Weekly coordination meetings with SWI are ongoing.
- Provided a Council Update on October 27<sup>th</sup>.
- On October 1<sup>st</sup>, held a neighborhood meeting with residents impacted by the Flood Wall. The meeting was well attended, and residents were able to meet with our surveyors to see exactly how tall the Flood Wall will be behind their backyard fences. The meeting was well attended, we provided copies of the Flood Wall photo simulations to all in attendance and were able to directly answer many questions.



Aspen Avenue in vicinity of City Hall & Library



## **Soliera Drainage Improvements** (DESIGN PHASE)

FUND: STORMWATER

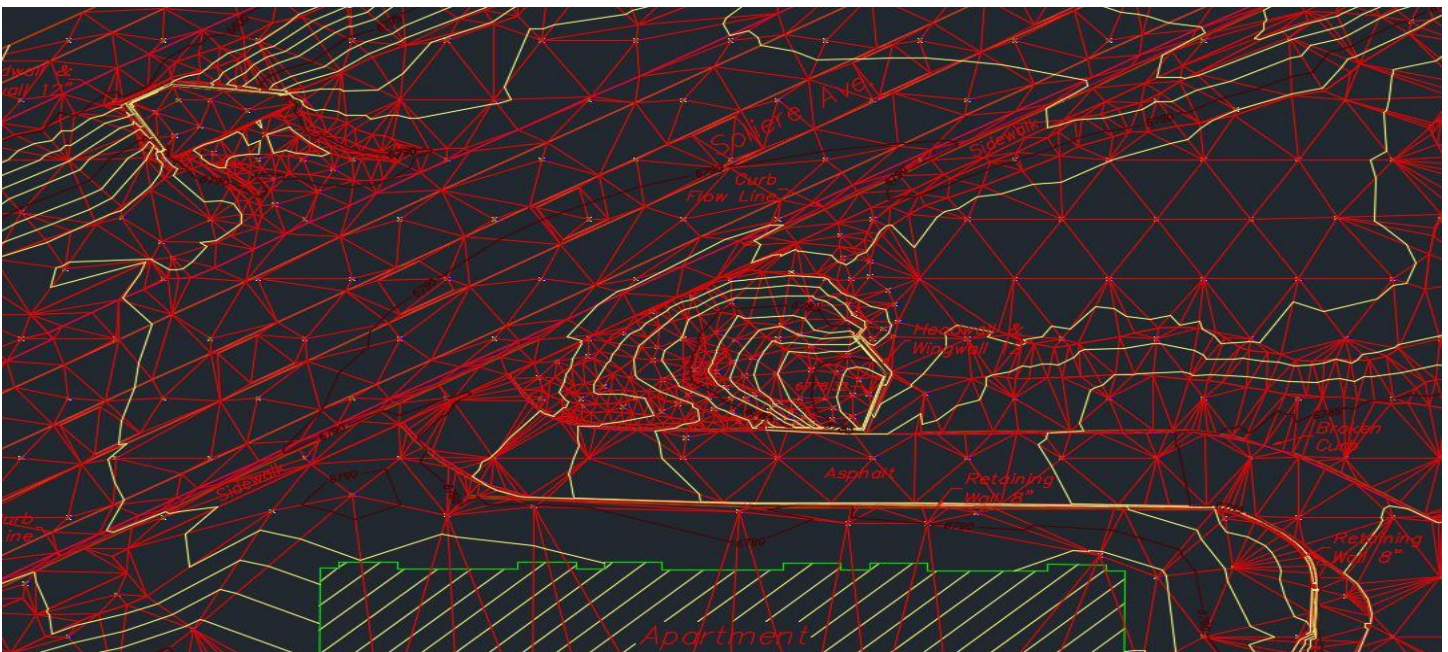
**Description** – This is a stormwater improvements project to eliminate the low water crossing at Soliera and to mitigate downstream flooding of private property from the stormwater discharge of Steve’s Wash.

### **Project Update:**

- A kickoff meeting was held on October 20<sup>th</sup> with Peak Engineering, JE Fuller, and City Staff to discuss scope, project goals, budget and to determine a project schedule.



*Google Earth image of existing low water crossing across Soliera*



*Topographical land survey of existing low water crossing across Soliera. It can be seen from the topo that the lack of a defined stormwater conveyance system is a large contributor to downstream flooding.*



## **Humphreys (US 180) ADOT Right-Turn Lane** (CONSTRUCTION PHASE)

FUND: ARIZONA DEPARTMENT OF TRANSPORTATION

**Description** – Project consists of building a second right-turn lane from Humphreys onto Route 66 including City sidewalk with a retaining wall. The purpose is to improve southbound traffic flows from Humphreys to Route 66/Milton.

### **Project Update:**

- The ADOT contractor, CS Construction, is contracted to complete the work by November 24, 2020, just prior to the Thanksgiving holiday. Lane opening is anticipated to happen a few days prior to the 24<sup>th</sup>.
- The pavement construction work is expected to be completed by October 29<sup>th</sup>; however, the 14” thick concrete section requires up to a 28-day cure period to reach its design strength in order to accommodate live vehicular loading.
- The work slated for completion in November includes installation of the railing for the stairs at the southeast corner of the City Hall property, removal and replacement of the signal control cabinet, completion of ADA compliant ramps at intersections, striping, completion of landscaping including City Hall lawn and general site work along with construction zone cleanup.
- Note that ADOT provided a temporary signal control cabinet to the contractor because Covid-19 delayed the manufacturing of the new control cabinet. The target date for delivery of the permanent cabinet is November 11<sup>th</sup>.



*Humphreys Street at Aspen Avenue, looking south*



*Humphreys Street east side of City Hall, looking south*



*New stairs at southeast corner of City Hall (handrail forthcoming)*