



SOUTHSIDE COMMUNITY PLAN

EMBRACE OUR HERITAGE

ENHANCE OUR FUTURE

**City Council Work Session
for the
Southside Community Specific Plan**

PZ #20-00001

Work Session- Tuesday, August 25, 2020

Sara Dechter, AICP, CP3, Comprehensive Planning Manager

Deborah Ann Harris, Southside Community Association

Work Session Presentation Objectives



- Overview of Notable Goals, Policies, Strategies and Concepts

Public Hearing Presentation Objectives



- Overview of Specific Plan Application
- Public Participation Process
- Present Staff Summary and Findings
- Plan Adoption

Schedule of Public Hearings



Planning and
Zoning
Commission #1

Wed. July 8

Planning and
Zoning
Commission # 2

Wed. July 22

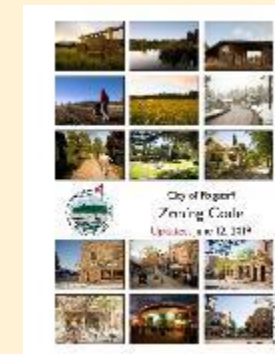
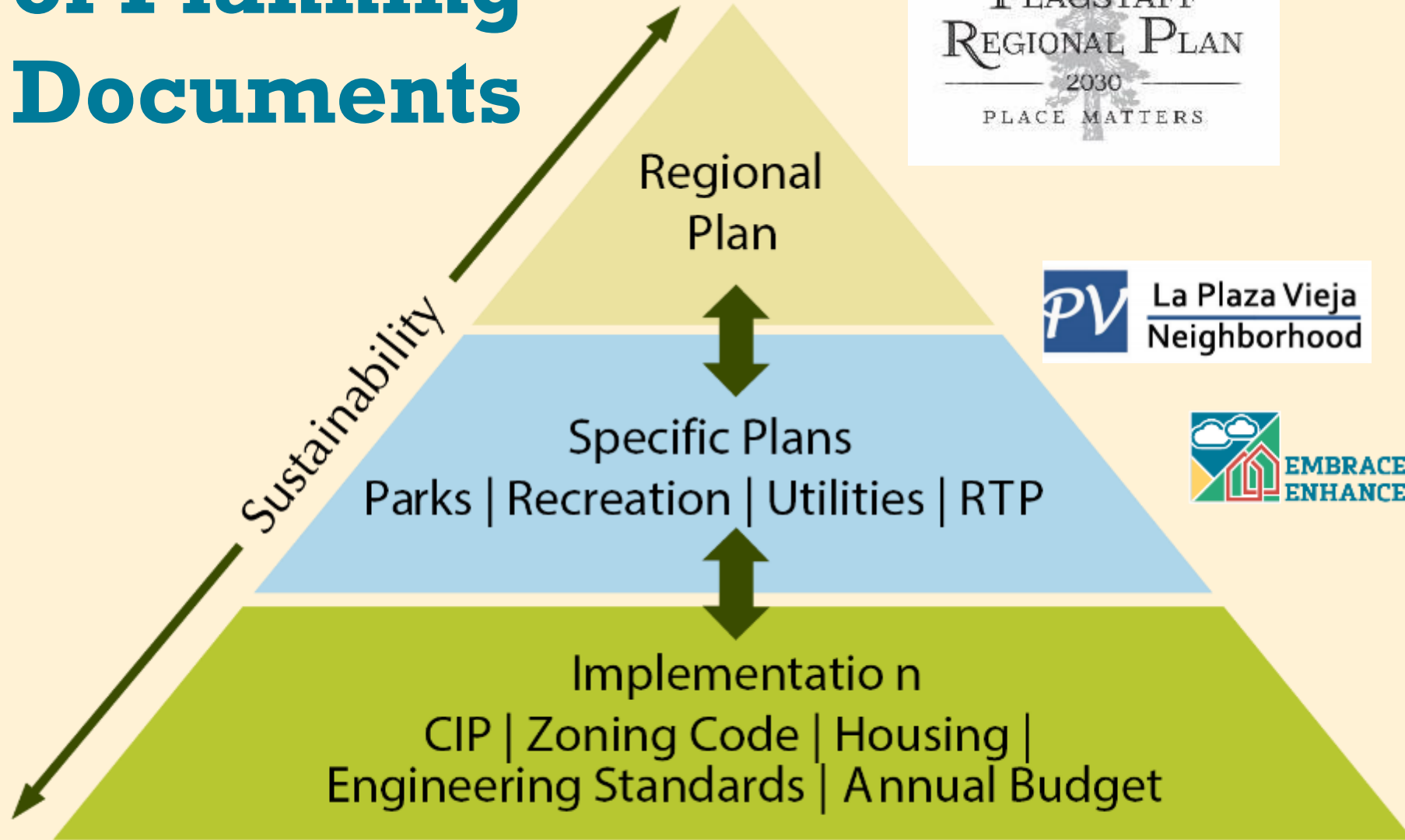
Work Session with
City Council

Tue. Aug 25

City Council Public
Hearing

Tue. Sept 1

Hierarchy of Planning Documents



IMPLEMENTATION STRATEGIES



GOALS AND POLICIES

VISION
The Southside Community shall promote sustainable improvements that enhance and embrace our heritage through CULTURAL STEWARDSHIP, retaining the unique character and cultural fabric and flavor of our neighborhoods.



Goals, Policies, and Strategies

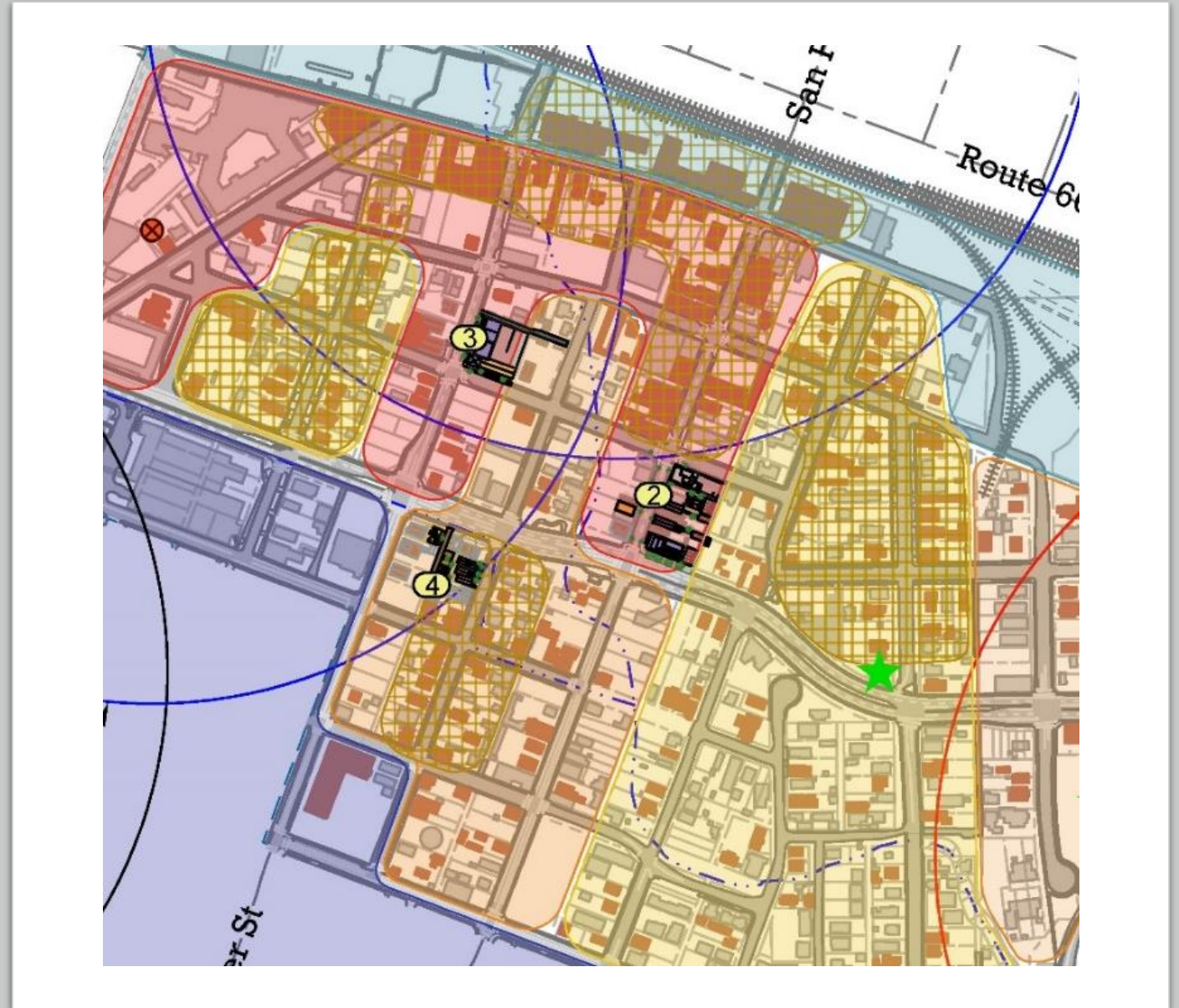


1. Heritage Preservation
2. Growth and Change with Subareas
 - Live/Make Center
 - Southside Main Streets
 - Live/Work Neighborhood
 - Neighborhood Core
 - Historic Preservation Focus Areas
3. Business and Live/Work
4. Public and Community Spaces
5. Transportation
6. Parking
7. Flooding and Other Hazards
8. Public Safety

84
policies
114
implementation
strategies

Heritage Preservation

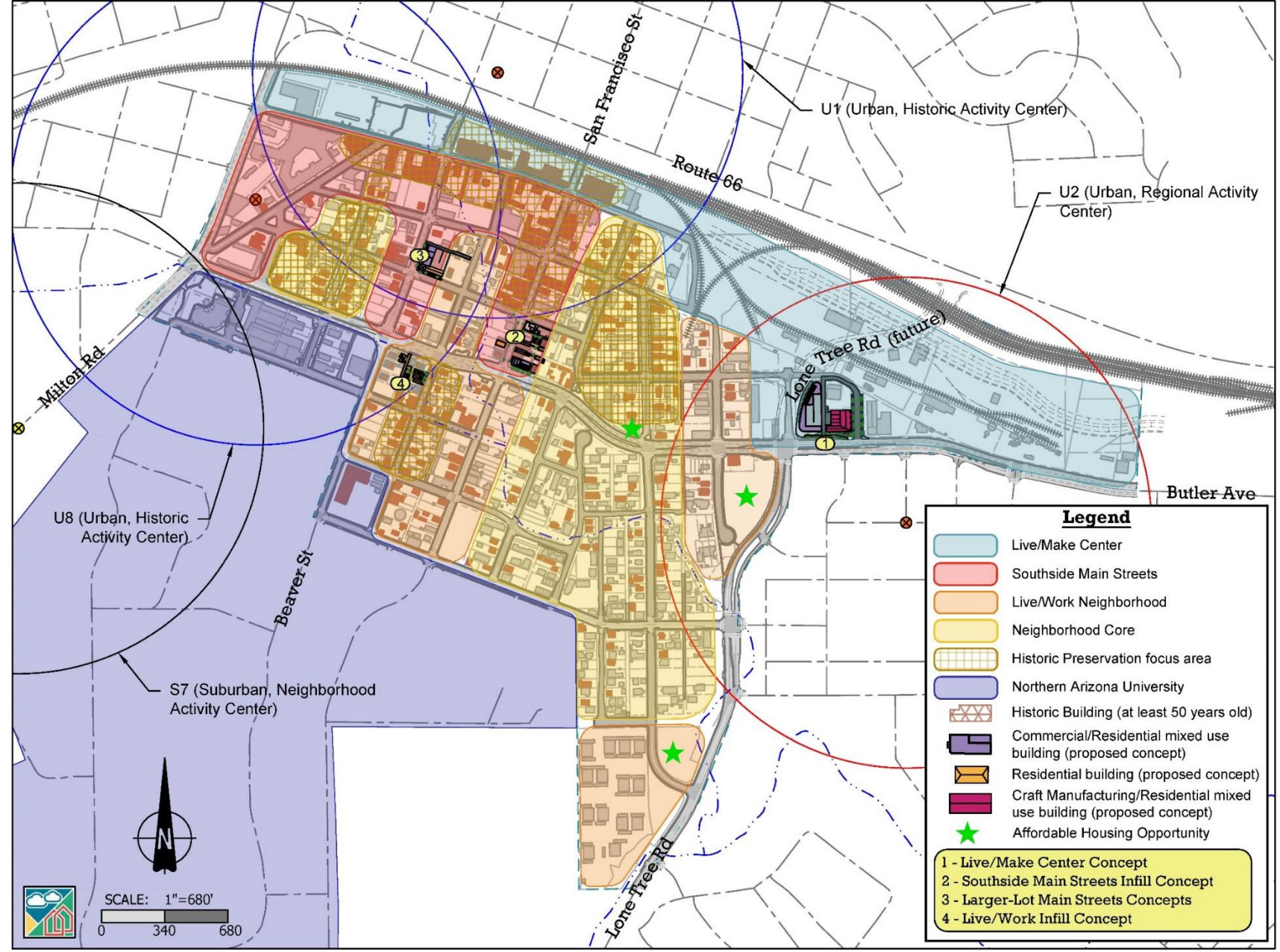
- Focus on adaptive reuse
- Maintain the NRHP District with context and new inventory
- Targeted and property owner supported overlays
- GOAL S1. Create awareness of the human stories that are the foundation of the Southside community.

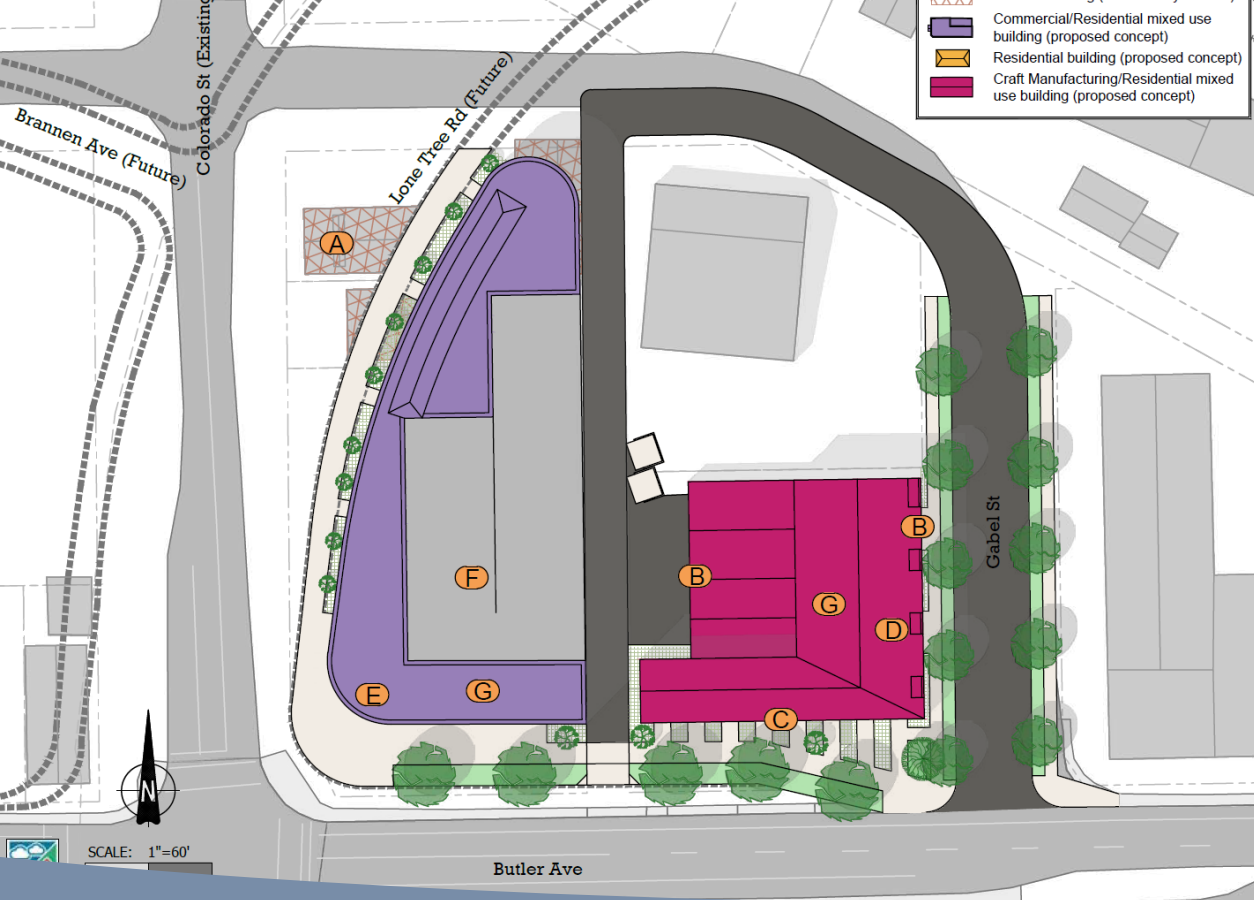


Growth and Change Subareas

- Framework for future zoning districts
- Create a variety of buildings
- Designed to create compatible new development within the historic district.

Concept Development and Preservation - Illustrations Overview





Live Make Center

- Goal: Entrepreneurial craft and manufacturing area with supporting commercial and residential uses, creating a live/work environment that provides economic opportunities for the neighborhood.

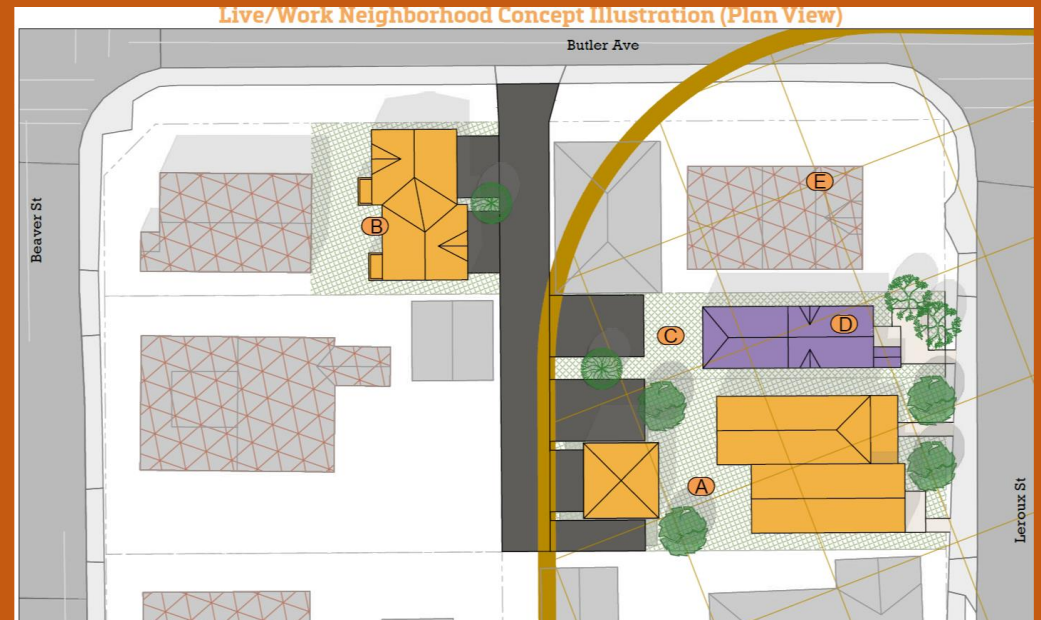
Southside Main Streets

- Goal: Preserves and adaptively reuses the commercial fabric of the National Register Historic Districts
- Goal: New infill is compatible in architecture, polishes and improves the urban fabric, and adds to the mix of business and residential opportunities



Live Work Neighborhood

- Goal: Preserve historic single-family homes, while allowing for infill of single and multifamily housing, small commercial enterprises, and live/work studios on small lots.



Neighborhood Core



- Goal: protects the context of historic single-family homes by allowing single-family homes, and duplexes with the possibility of additional units in the rear of the property that can produce income

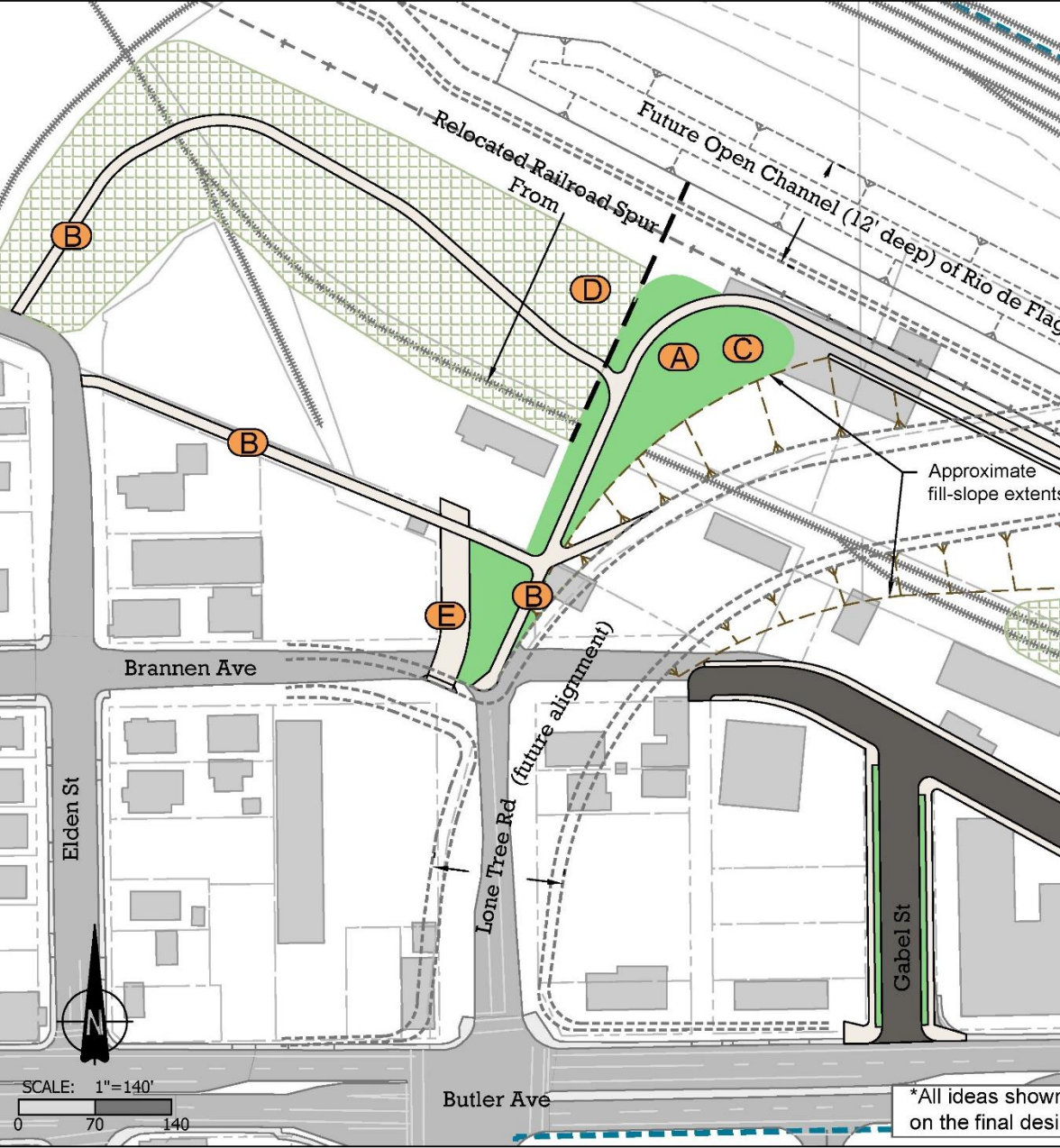
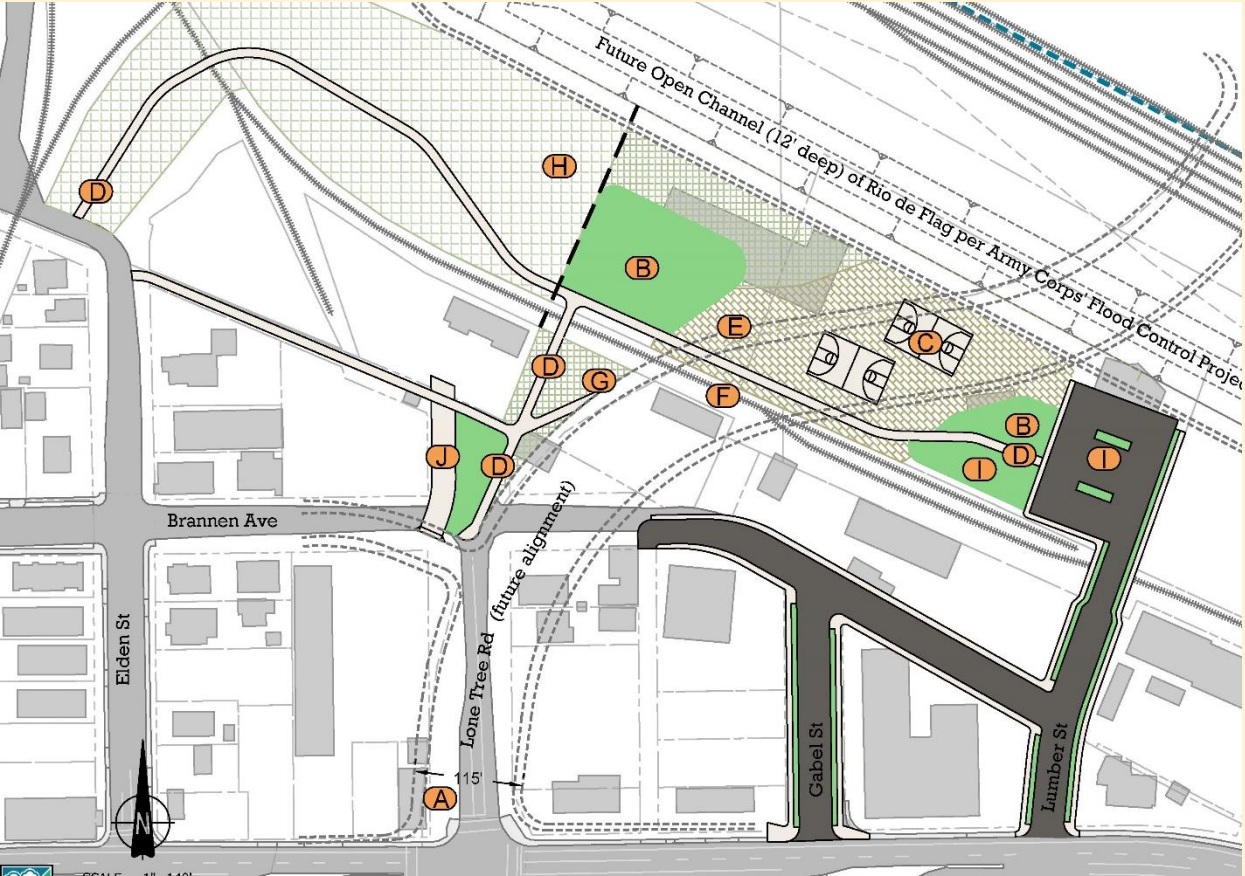


Parks

- Five potential locations for new park space in the Southside
- All on property the City owns or will own in the next few years

Lone Tree Overpass Park

- Uncertainty of final road design generated alternatives
- Park is not yet programmed



Murdoch Center

Clear identified need for park space

Potential Sites already owned by the City identified

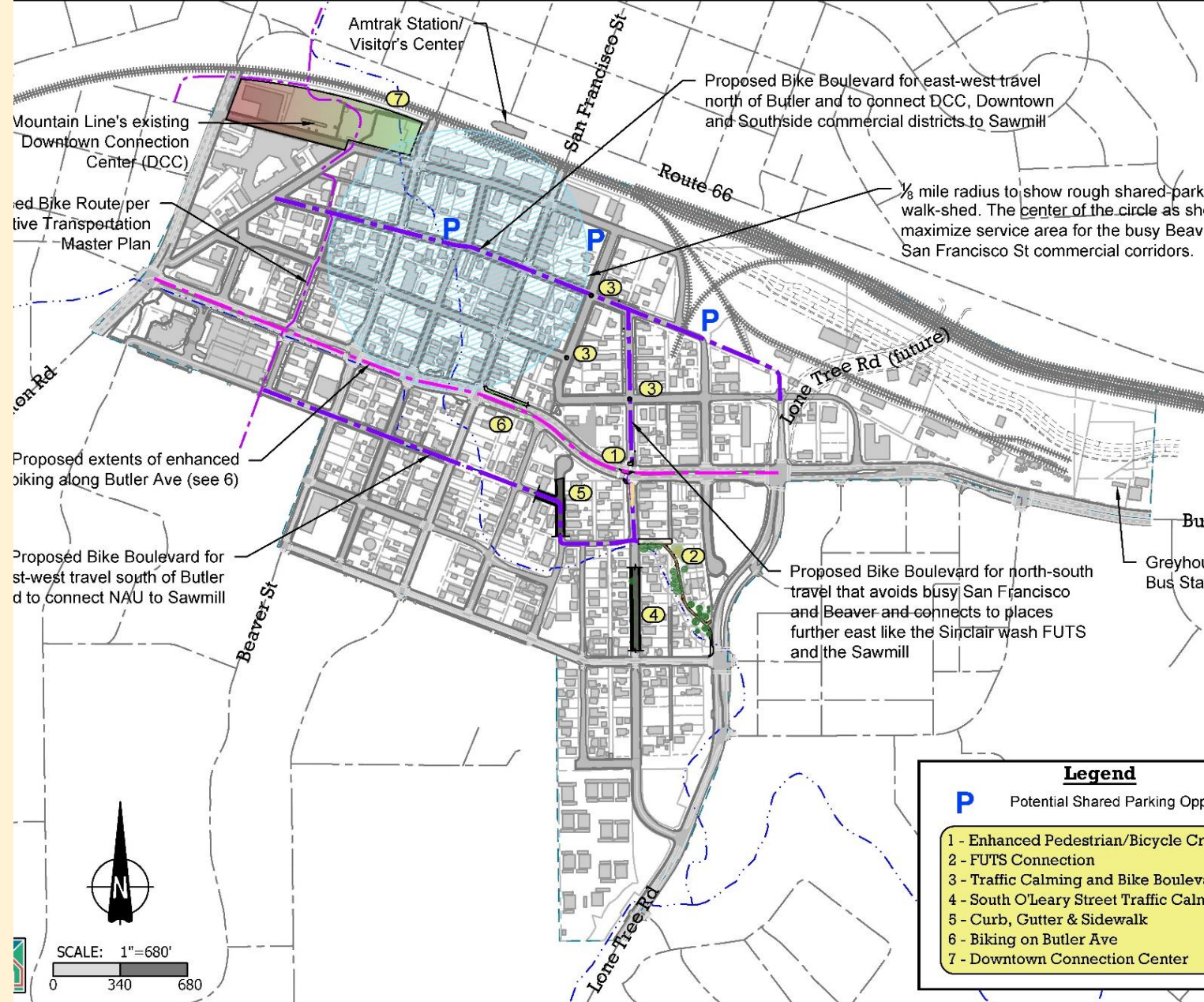
Not a commitment and not inclusive of all opportunities



Transportation Improvements

- Crossing at Butler and O'Leary
- Bicycle boulevards and traffic calming improvements
- Improvements along Butler
- Potential sites for ParkFlag surface lots
- Downtown Connection Center

Concept Public Improvements - Transportation Illustrations Overview





Transportation Improvements

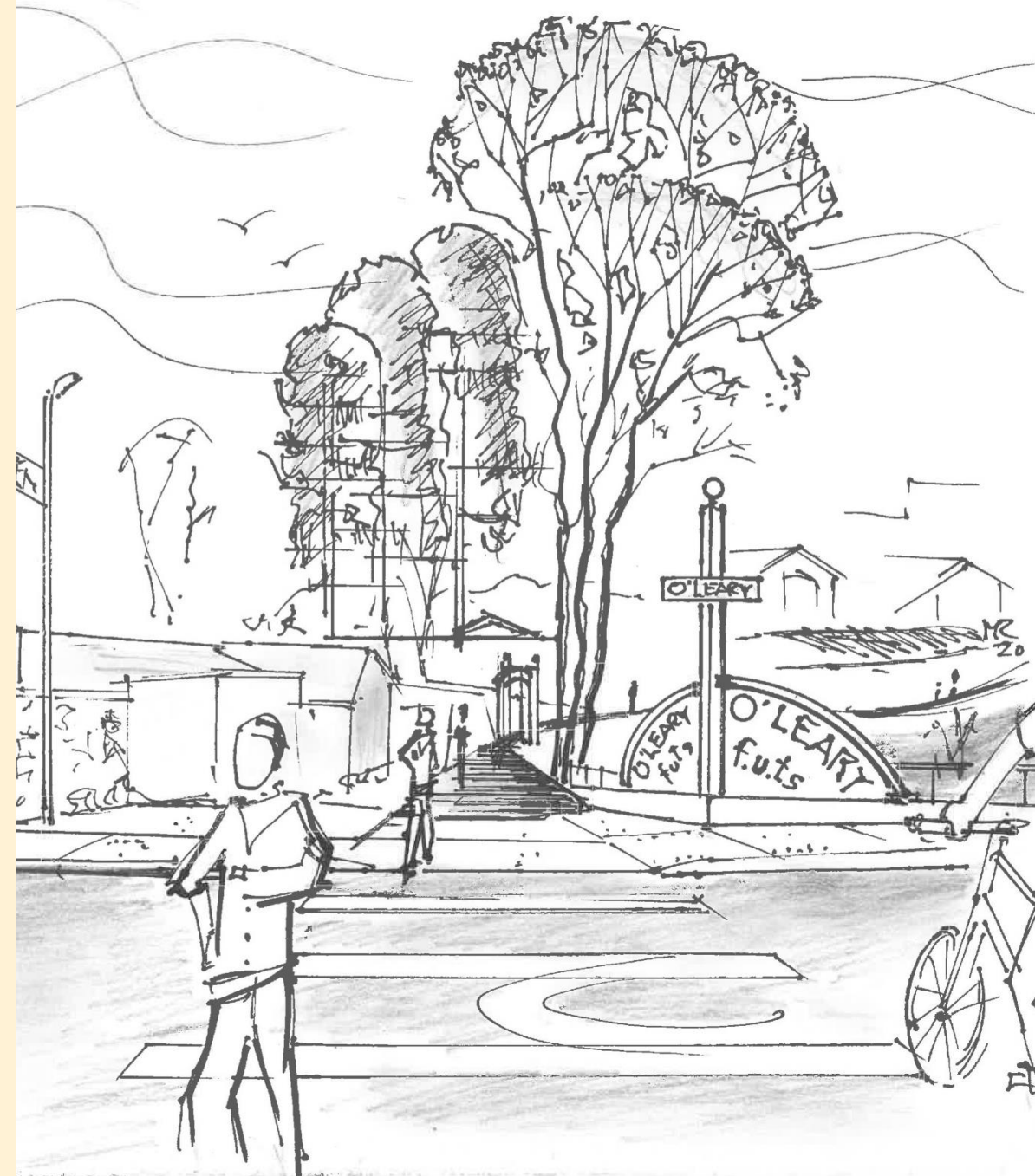
Complete incomplete streets and sidewalks

Solve issues within the right-of-way



O'Leary Street FUTS

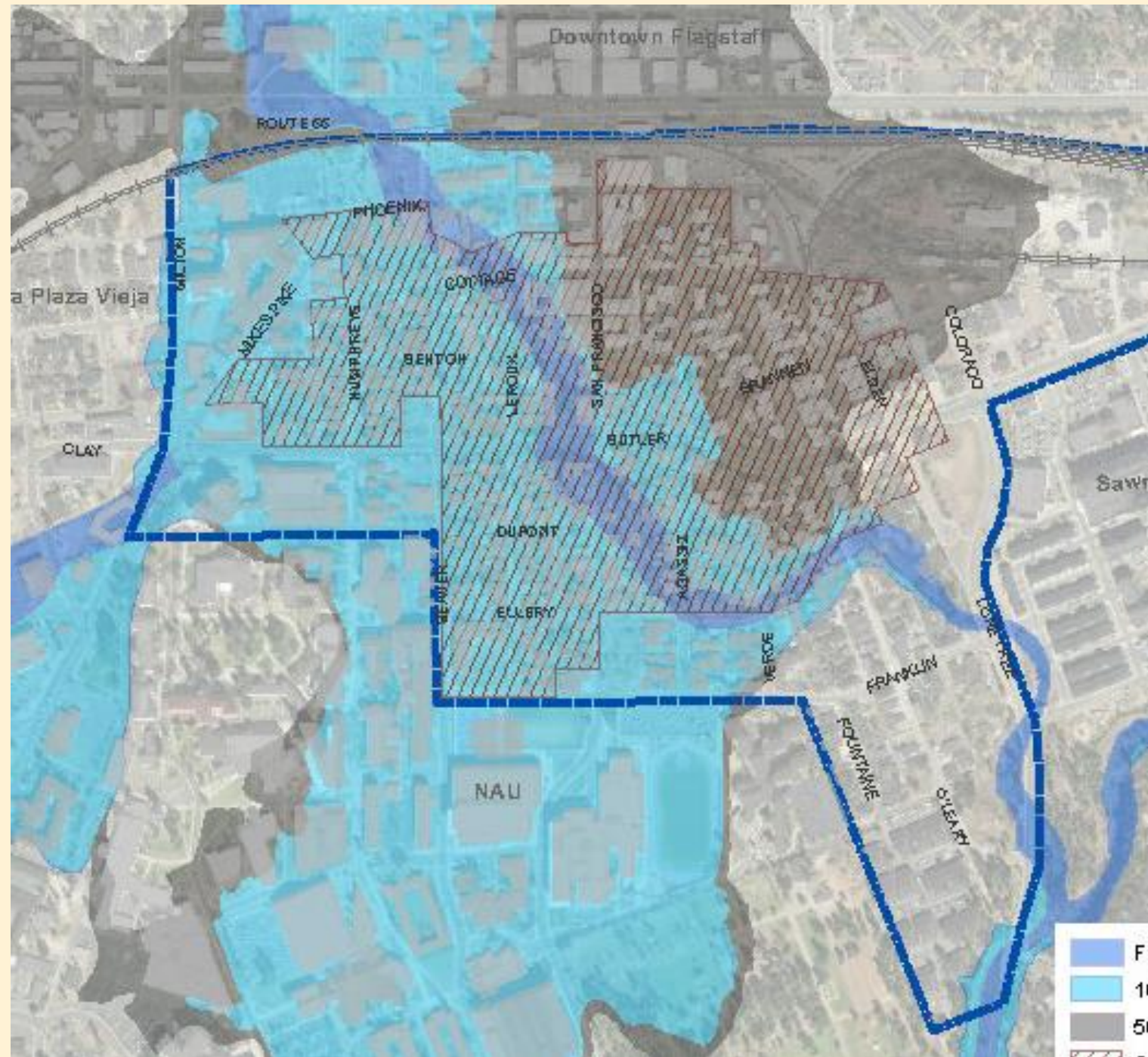
Additional Public Engagement in January included door to door canvassing, new conceptual drawings, and field trips





Flooding

- Main goal: Resolve longstanding flooding hazards in the Southside community.
- Removal of the FEMA floodplain
- Prepare for and make efforts to minimize displacement
- Address localized flooding after the Rio



Public Safety Goals and Policies



Public Safety

GOAL S 17. Reduce the occurrence of high-frequency low level crime that affects quality of life in the community through environmental design.

Policy S 17.1. Increase the number of “eyes on the street” at all times of the day in all Southside public spaces, through urban design and community programs, to create safety in numbers and improve the perception of safety in the neighborhood.

Policy S 17.2. Design parks to encourage structured and unstructured use at all times of the day and to be near other private spaces that have use spread throughout all times of the day.

Policy S 17.3. Design and maintain public spaces that are visible to typical neighborhood activity, especially along the Rio de Flag or in parks.

Policy S 17.4. Create an environment for safer nightlife in the neighborhood.

**City Council
Public Hearing
on
September 1st
at 3pm**



Sara Dechter

211 W Aspen Ave.

Flagstaff, AZ 86001

(928) 213-2631

sdechter@flagstaffaz.gov

Project Website:

www.flagstaff.az.gov/southsideplan