



Snow Operations Readiness Report 2020



Presentation Objectives

Provide the City Council and the community with a Public Works winter storm readiness report.

1. Forecasting and Storm Preparations
2. Streets - Winter Operations
3. Parks – Winter Operations
4. Post Storm Operations
5. Community Expectations and Parking Ordinance



Storm Preparations



Winter Storm Event

- NWS and all-weather briefings
- On-call supervisors and weather watch
- Weather and Road Conditions
- Resource deployment
 - Safety, Timing and Temperature
- Agency communication and reporting
- Snow operations are 24/7 with 12-hour shifts



Streets Section



- Added 3 new FTE
- Recent fleet improvements
 - 1- 10 - wheel plow truck
 - 2- 6 - wheel plow trucks
- 2020 Economic Outlook
 - Additional grader(s) on hold
 - Pilot grader gates program and increased service delayed

Streets Fleet and Equipment

- 19 - 10-wheel Plow/Spreader Box Trucks
- 4 - 6-wheel Plow/Spreader Box Trucks
- 9 - Road Graders
- 3 - Front End Loaders
- 1 - Truck mounted Snow Thrower
- 3 - Tractor-trailers for hauling operations





Streets Personnel Preparations

Snow operations are 24/7 with 12-hour shifts

4 - Full Time Operations Supervisors

18 - Full Time Streets Equipment Operators

4-6 - CDL operators from other sections

6-18 - On-Call community CDL operators

1 - Administrative Specialist

Minimum shift staffing, CDL pool and wage concerns



Snow Operations - Streets

First Priority Routes – Open and Passable at all times

- Main Routes and Arterials
- Major Hills
- Downtown Core
- NAIPTA Bus Routes

Second Priority Routes –

- Residential Streets and Cul-de-sacs

Plowing and Ice Control for duration of the storm event.



Parks Section - Readiness

- Same forecasting and snow season readiness as our partners in Streets with season predictions and resource analytics
- All staffing and fleet same as previous fiscal years
 - 15 equipment operators, 10 hand shovelers
 - 1 FTE is vacant during the recession plan and 1 FTE is on a leave of absence which will create impacts to the operation
- Adjustments to routes and locations accounted for and implemented into the Workforce GIS application
- Courtesy berm relocation program review and implementation

Parks Fleet and Equipment

- 10 – Plows on Trucks
- 1 – Cinder spreader
- 6 – Tractors and Backhoes
- 4 – Snow throwers
- Many shovels!





Snow Operations - Parks

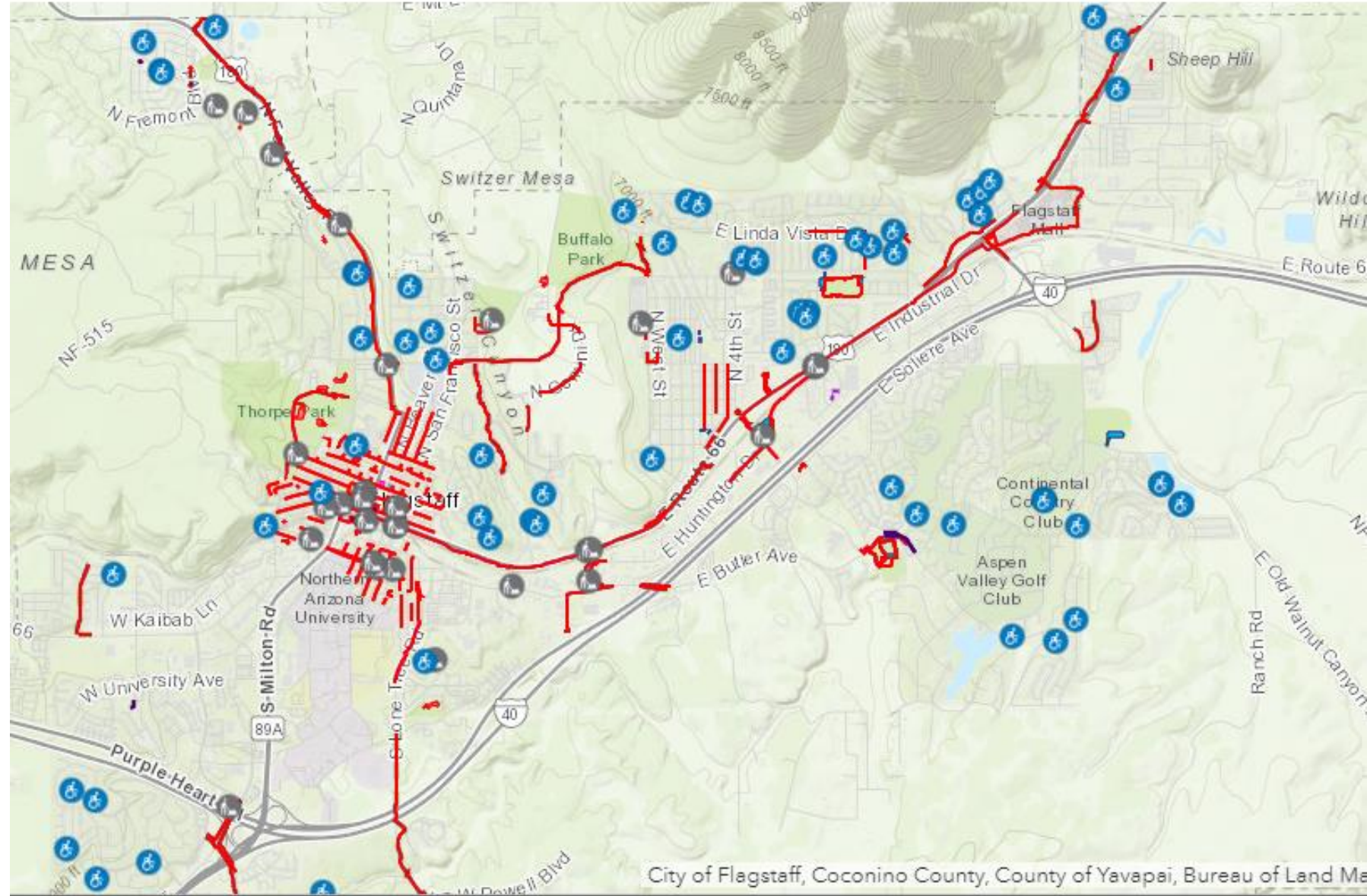
- Operation is 24/7 with 12-hour shifts when applicable
 - Shifts typically 4 AM, 6 AM and 9 AM start times
 - 2 AM hauling time for downtown/Heritage Square
- Priorities of routes, in order
 - Parking lots of City-owned buildings
 - City-owned sidewalks and FUTS system (non-aggregate)
 - Heritage Square
 - Dedicated City Alleys
 - Courtesy Berm Service, when applicable
 - Entrances to FUTS – non aggregate only
 - Parking lots at park locations
 - Stairways, walkways, skate tracks and BMX track in City parks



Snow Operations- Parks

Parks snow accumulation policy:

- 1" and above – City Owned Building Sidewalks and Heritage Square Plaza
- 3" and above – City Owned Parking Lots
- 6" and above - Dedicated City Alleys and FUTS Trail Entrances





Post Storm Operations

Community-wide

- Periodic hauling operations – Downtown Parking
- Cul-de-sac stacking and removal
- Intersection clean up and push back
- Signage and damage repairs
- Prolonged Ice control and trouble spots
- Ice Cinder sweeping

Priority is bike lanes and mains.



Public Operations Assistance

- Limit travel as much as possible
- Provide safe distances and stay alert
- Winter Parking Ordinance and Enforcement

NO Parking on City Streets November 1st to April 1st

Citywide – Midnight to 7:00 AM

N. Downtown Area* – 3:00 AM to 7:00 AM

- Museum Flood mitigation areas
- City Web site for more information



Questions?

