



Project Overview

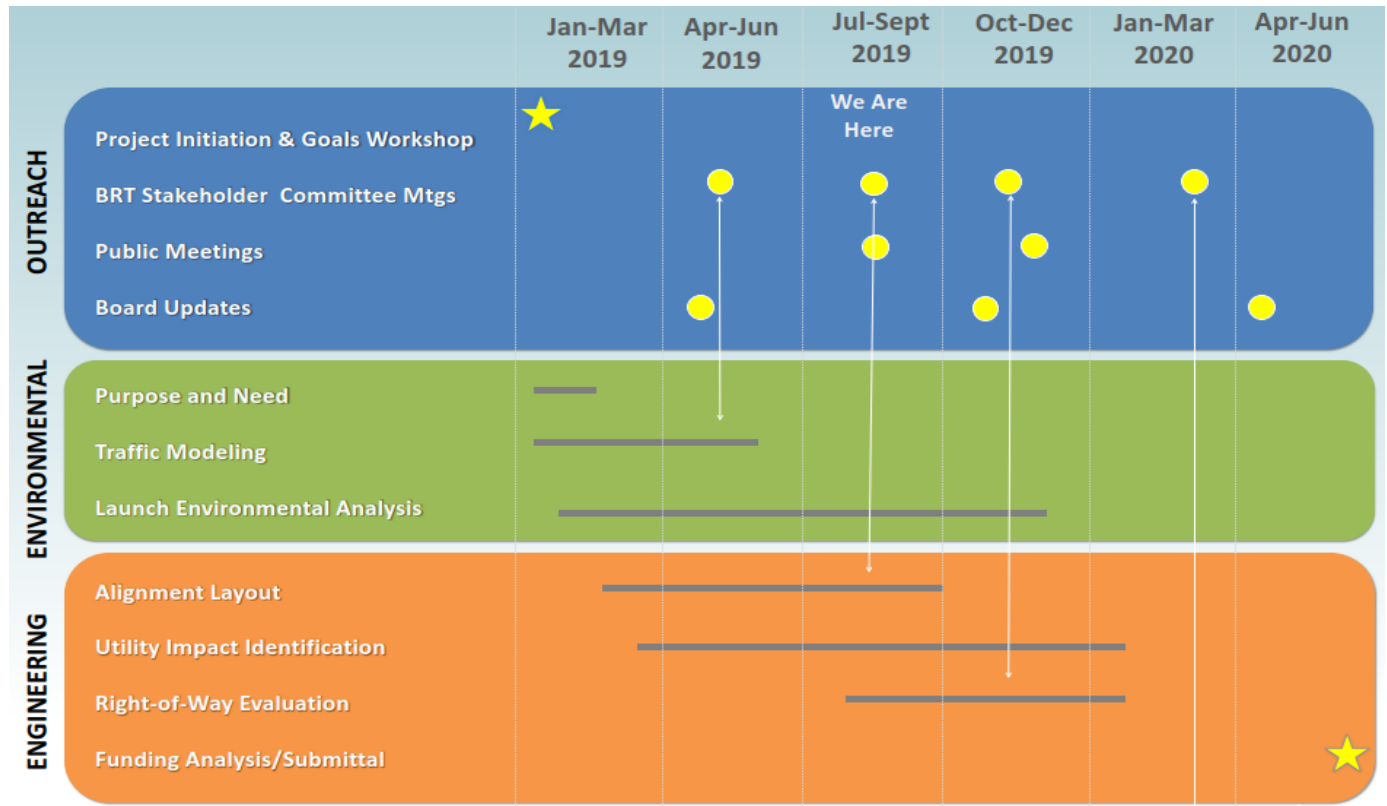
In November 2018, Mountain Line initiated the development phase of the Bus Rapid Transit (BRT) Project to study potential long-term improvements and high-frequency bus service from the Flagstaff Medical Center to Woodlands Village. BRT is a toolbox of transit enhancements that adds up to a faster trip and an improved experience. As a result of Mountain Link (Route 10), our first BRT that opened in 2011, system-wide ridership increased 66% in the first year alone and, in subsequent years, spurred economic development along the Mountain Link corridor. Mountain Line anticipates similar results with the second BRT.

A team of agency stakeholders has been advising staff on technical aspects of the project. Over the past four meetings, stakeholders have provided critical feedback on the project’s purpose and need, alignment alternatives, criteria to screen alternatives, and, most recently, the results of the evaluation.

Project Goals

- ENHANCE** Make transit and multimodal mobility in Flagstaff more compelling
- CONNECT** Connect neighborhoods and activity centers and improve local mobility
- DEVELOP** Support economic development goals
- SUSTAIN** Create an environment that will sustain over the long term
- THRIVE** Strengthen the downtown core and connections to Woodlands Village, NAU, and the Flagstaff Medical Center

Project Timeline

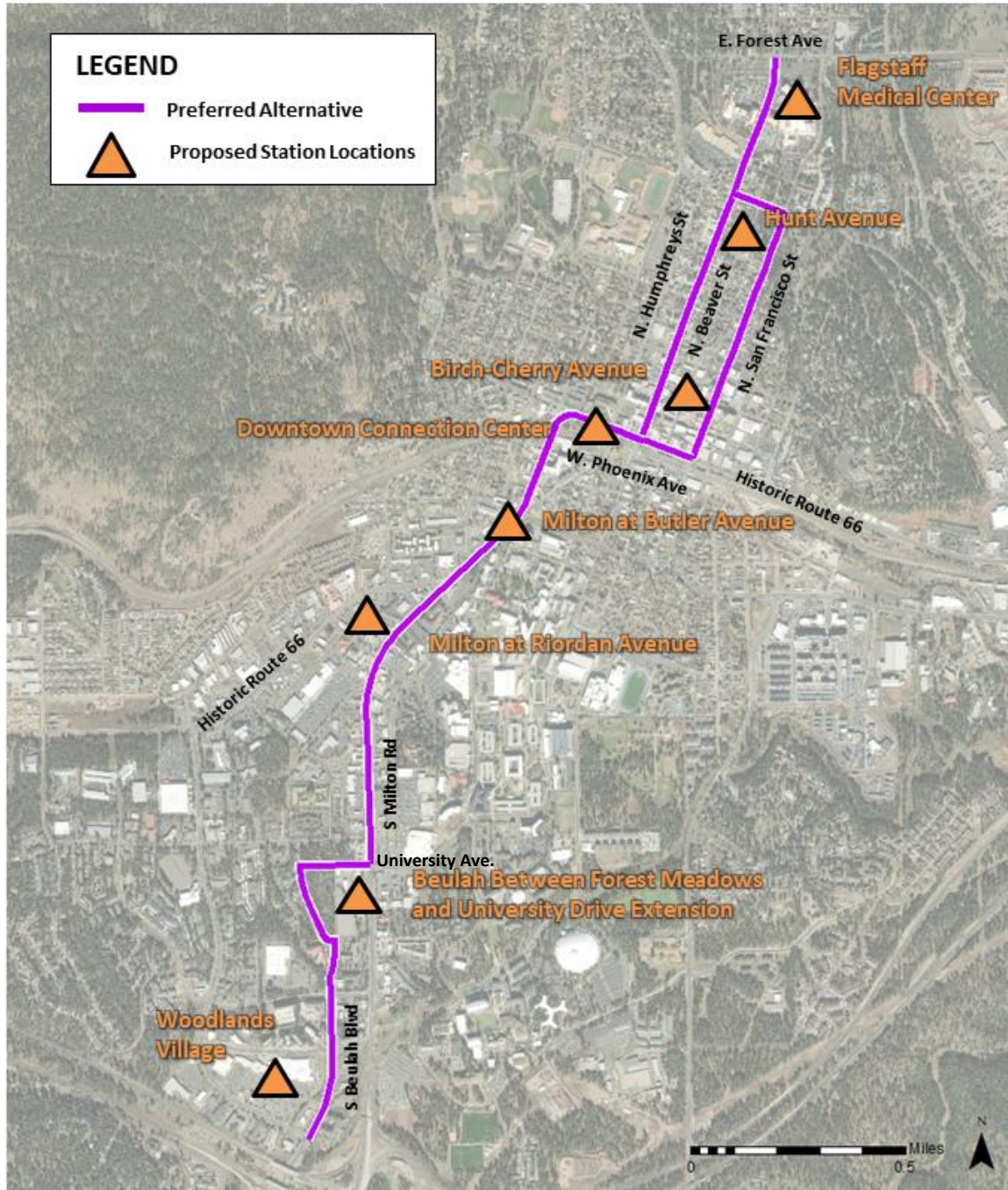


Getting you where you want to go





Project Map



We Want To Hear From You!

- Visit the BRT project website at <https://mountainline.az.gov/brt/>
- Email questions to BRT@naipta.az.gov
- Talk with the BRT Project Manager: Bizzy Collins (928) 679-8935



Getting you where you want to go

