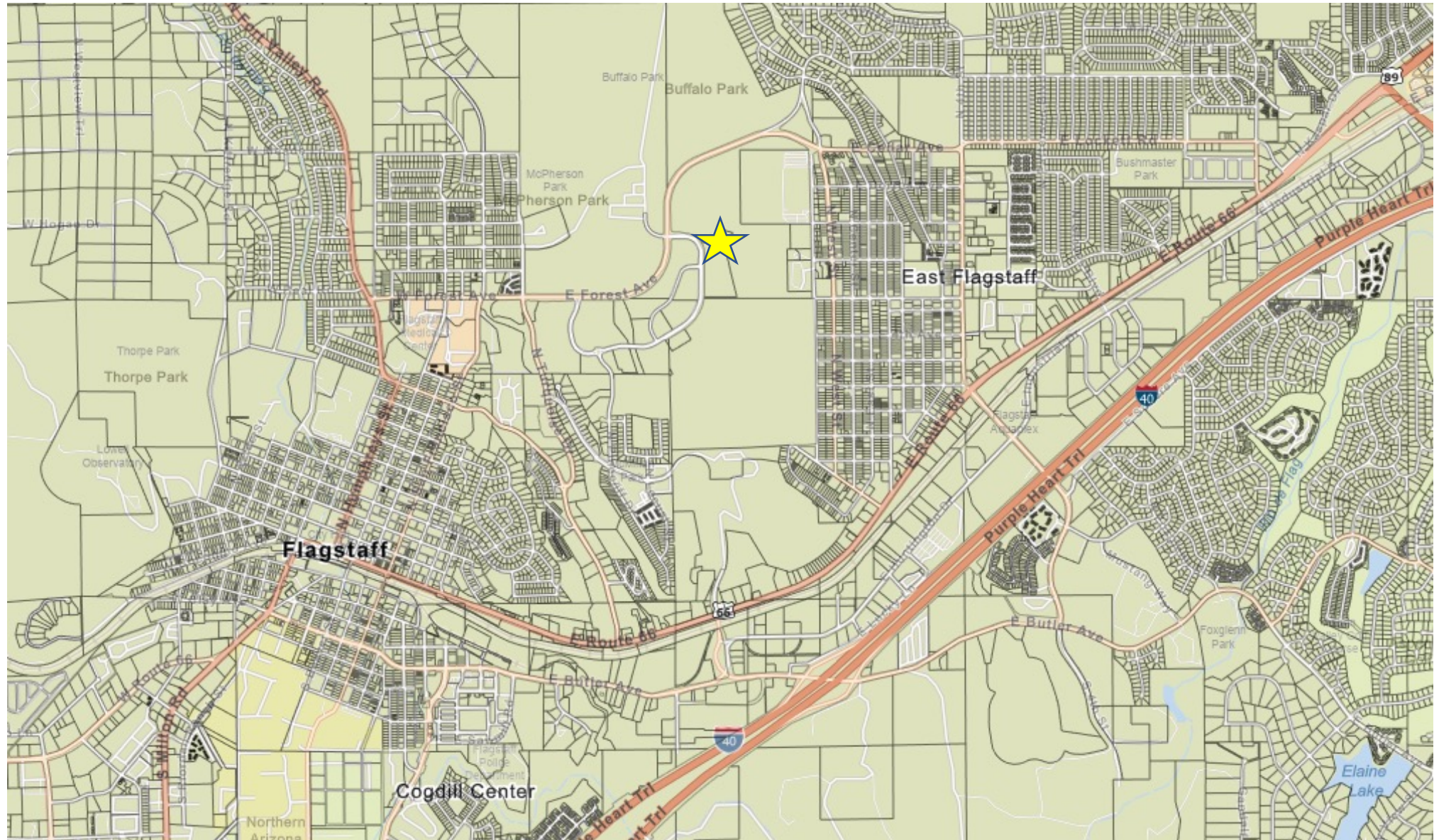


APS Easement Amendment





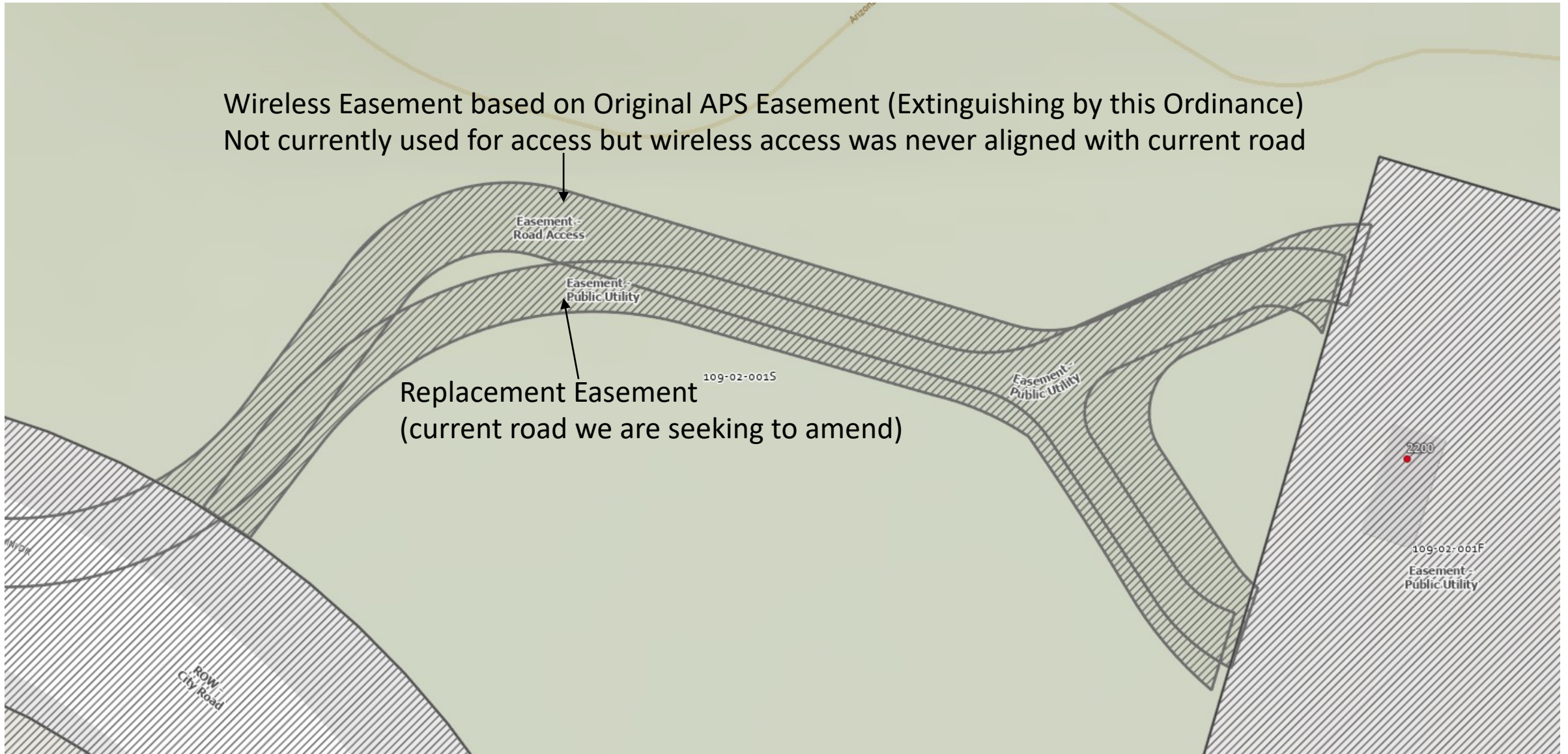
Vicinity Map





Existing Easements

Wireless Easement based on Original APS Easement (Extinguishing by this Ordinance)
Not currently used for access but wireless access was never aligned with current road



Replacement Easement
(current road we are seeking to amend)

Easement -
Road Access

Easement -
Public Utility

109-02-001S

Easement -
Public Utility

2200

109-02-001F

Easement -
Public Utility

ROW
City Road



Vicinity Map





Easement Amendment

