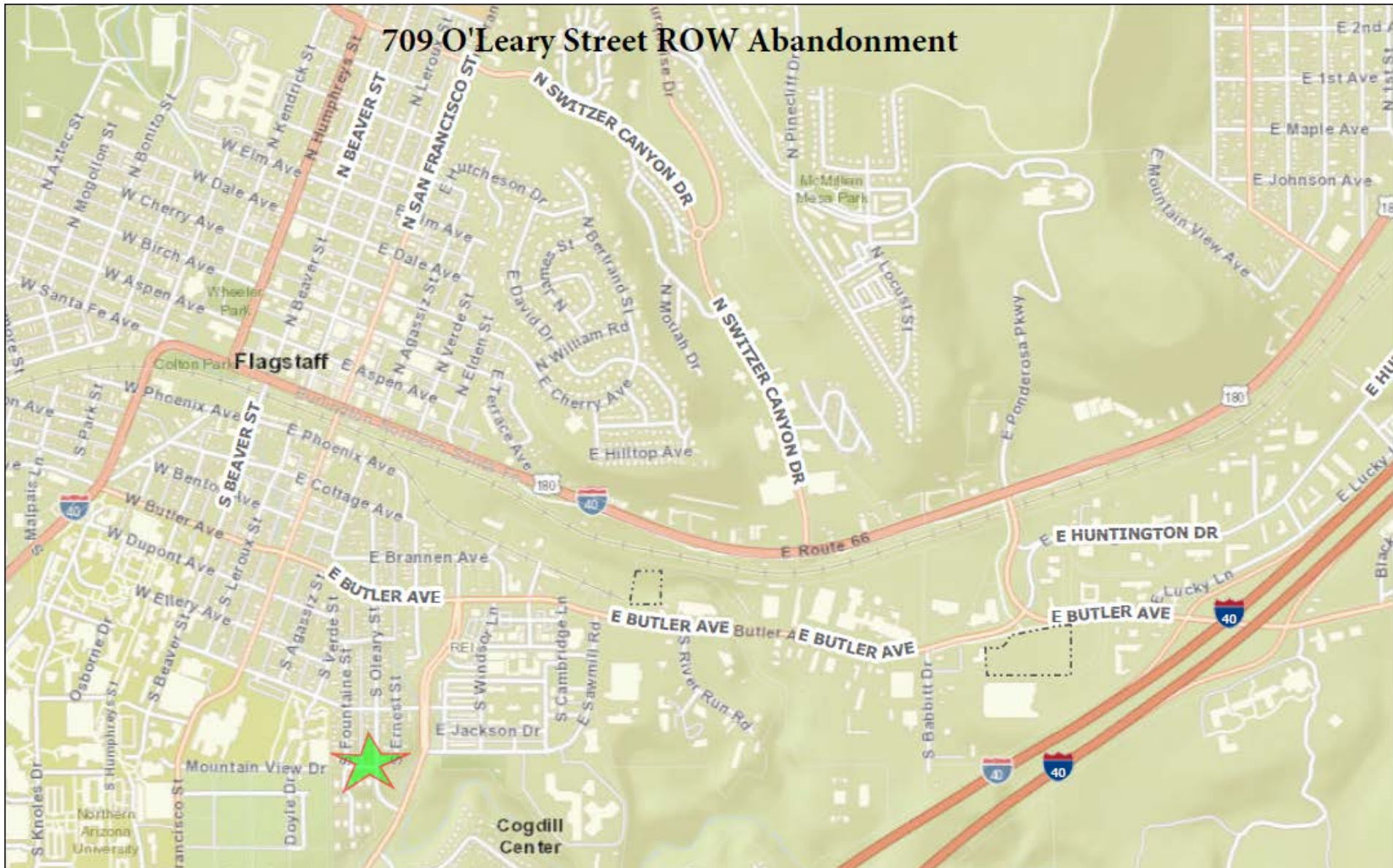


# Abandonment of ROW 709 O'Leary Street





# Vicinity Map





# Satellite View

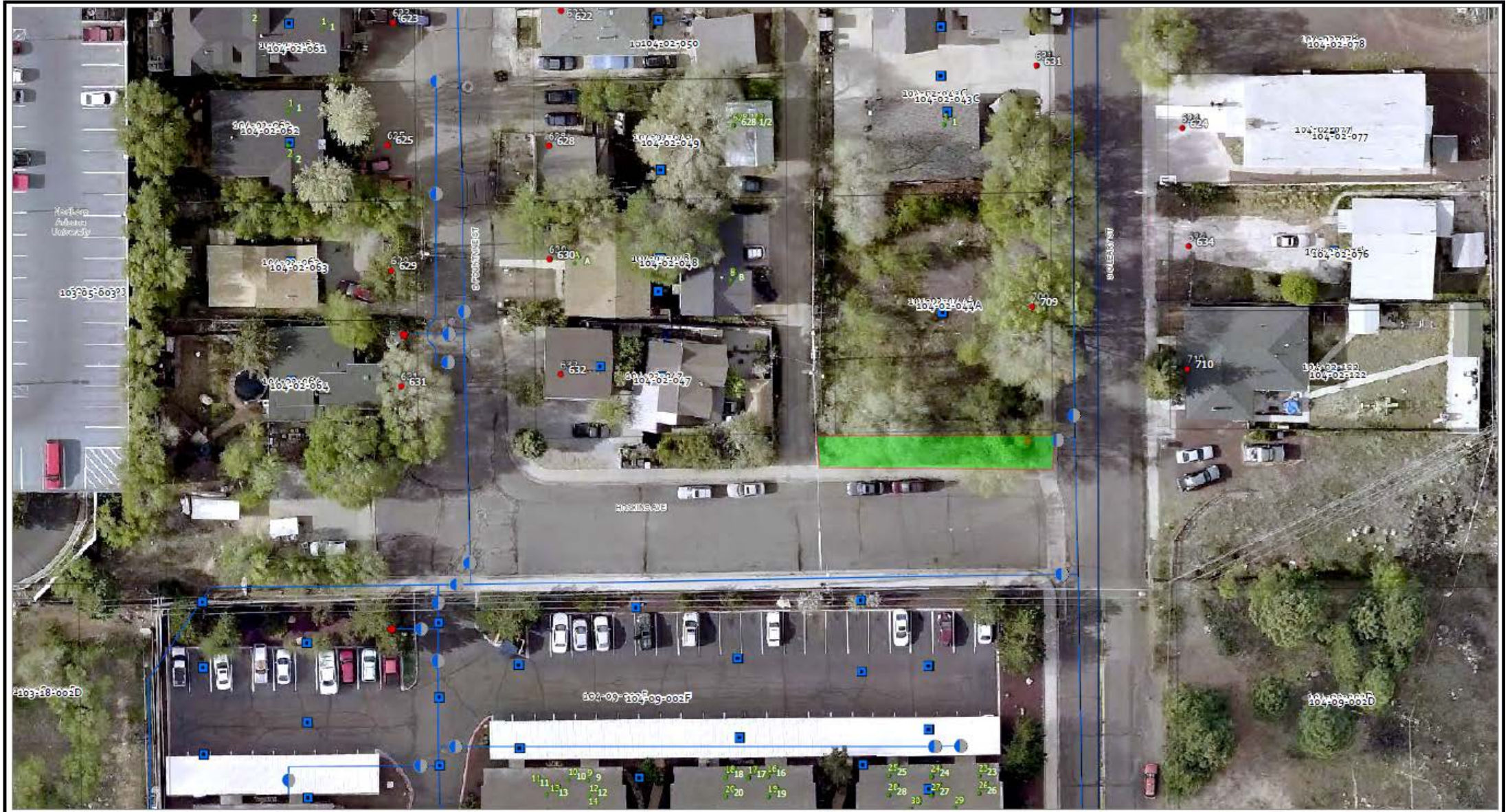


709 O'Leary Request



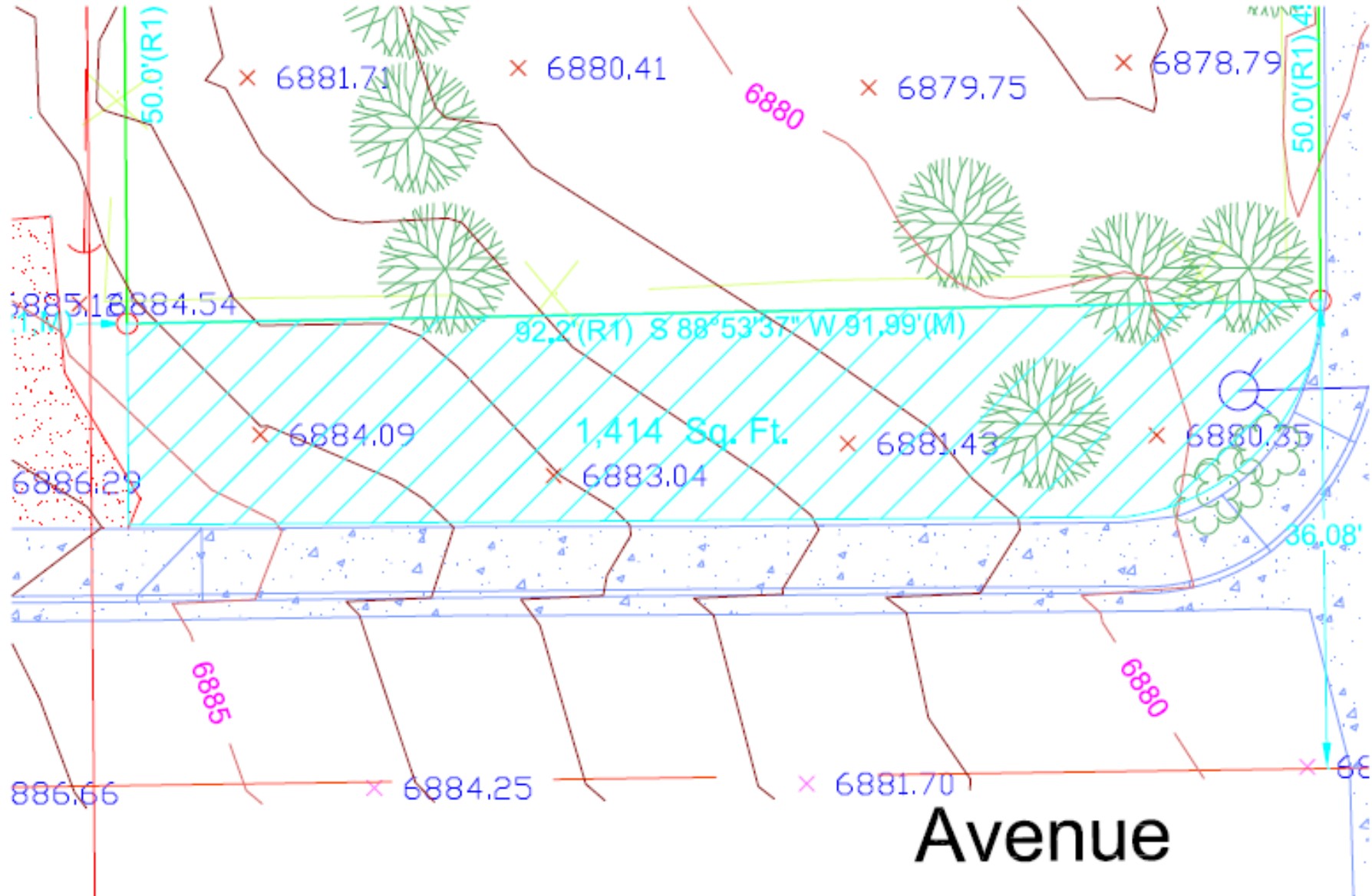
City of Flagstaff maps and data are updated on a regular basis from data obtained from various sources. The City of Flagstaff endeavors to provide accurate information, but accuracy is not guaranteed. You are strongly encouraged to obtain any information you need for a business or legal transaction from a surveyor, engineer, title company, or other licensed professional as appropriate. Information is provided subject to the express condition that you knowingly waive any and all claims for damages against the City of Flagstaff relating to use of this information.







# Approx. SQFT of ROW Abandonment





# Background/History

Hoskins Street dedicated in 1943

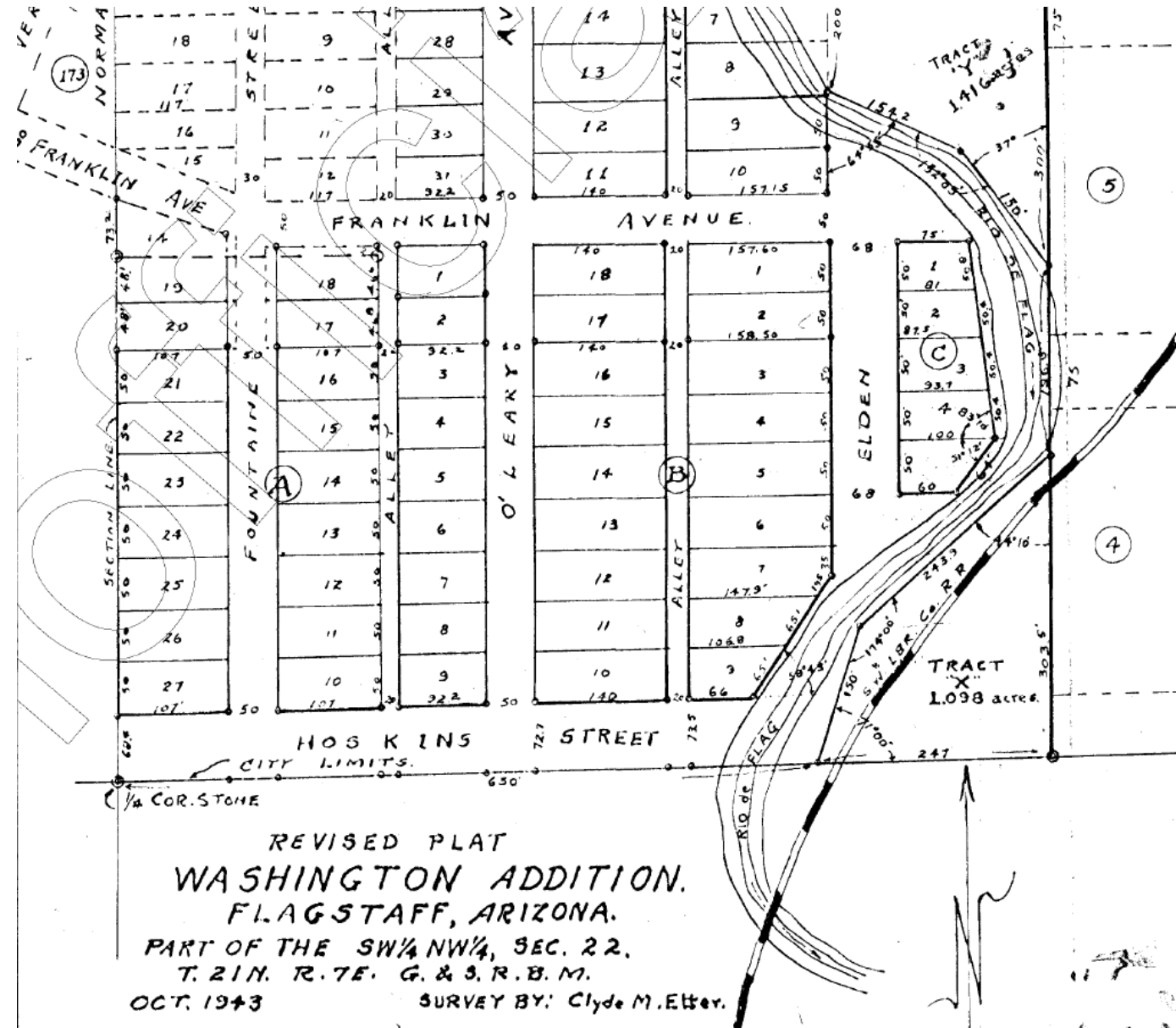
As-Built Street does not Utilize entire Public Right-Of-Way Dedication

**DEDICATION.**

This is a Revised Plat of WASHINGTON ADDITION to the CITY of FLAGSTAFF, COCONINO COUNTY, ARIZONA, and is a subdivision of a portion of the SW $\frac{1}{4}$  of the NW $\frac{1}{4}$  of Section 22, T. 21 N. R. 7 E. G. & S. R. B. M. The Numbers of the LOTS, and the dimensions thereof, and the widths of the STREETS and ALLEYS are shown hereon. The STREETS & ALLEYS are hereby Dedicated to the use of the Public.

In Witness whereof We, have hereunto set our Hands and Seal.

*George G. Babbitt, Jr.*  
 GEORGE G. BABBITT, JR.  
*Ruth Babbitt*  
 RUTH BABBITT, his wife.



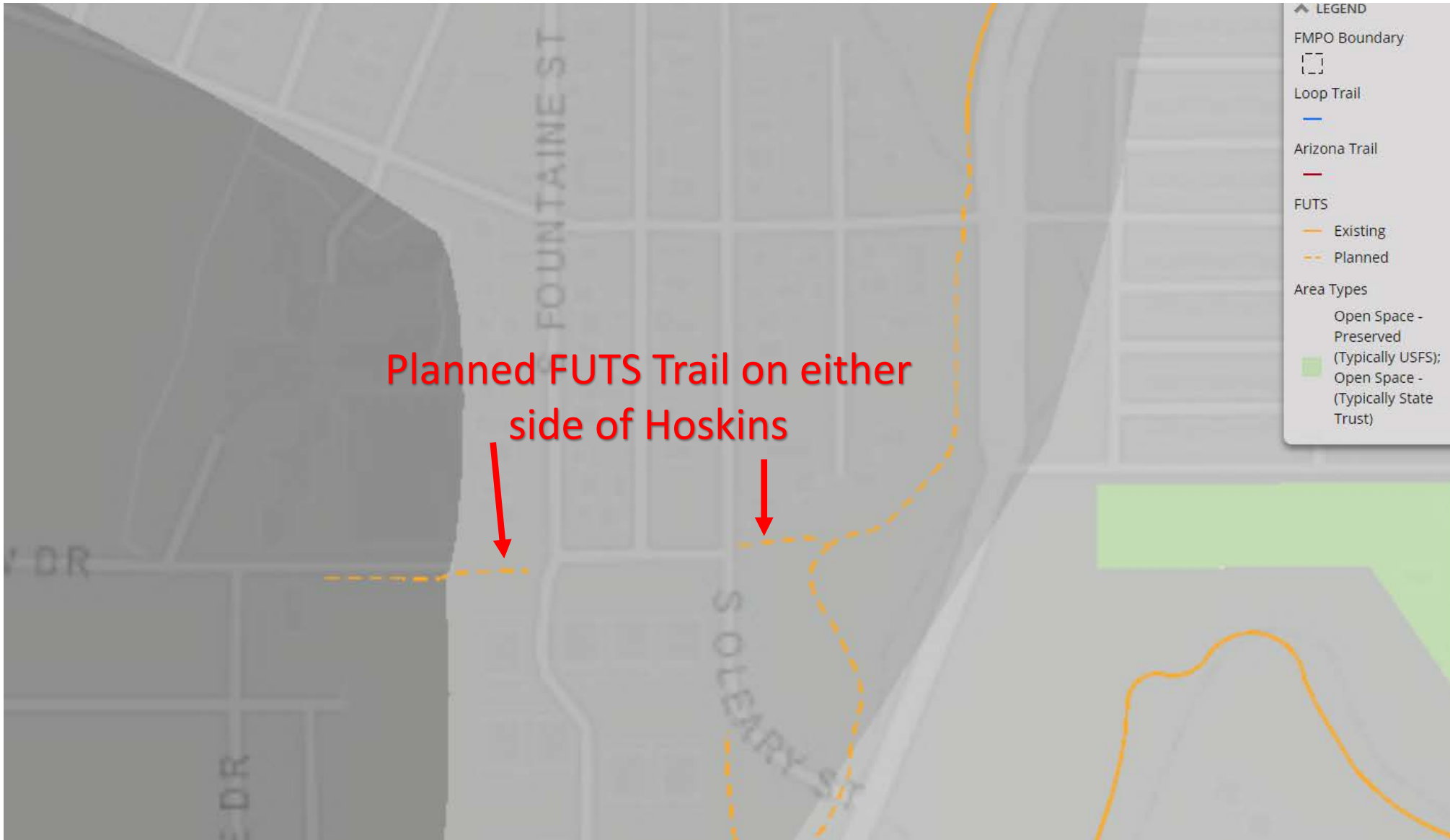


# Public Right-Of-Way





# Flagstaff Regional Plan 2030

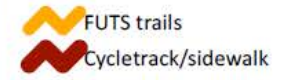




# Draft Active Transportation Master Plan



Site Map  
Hoskins Connection  
Lone Tree FUTS





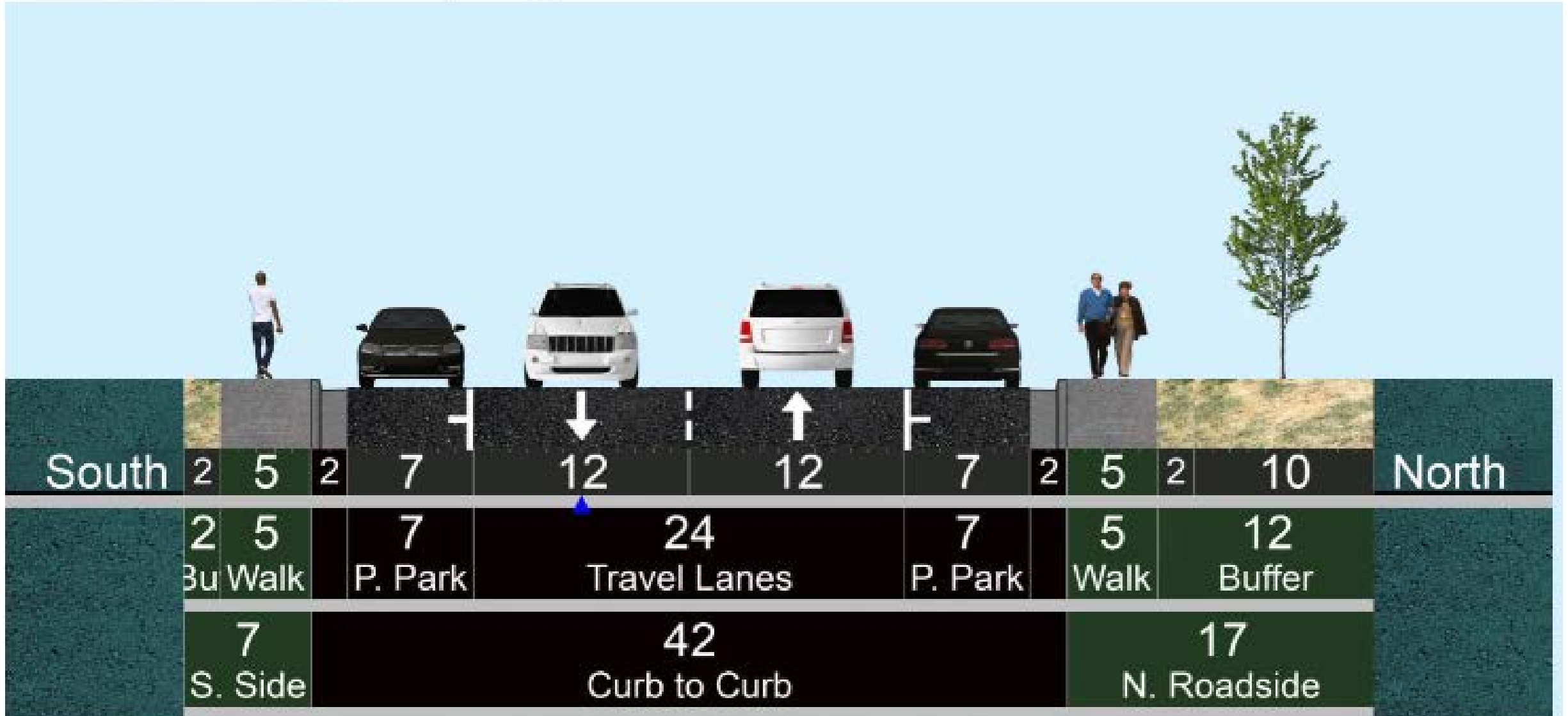
# Existing Conditions



**Hoskins Ave**

**Existing**

Right-of-Way: 66' of 66'



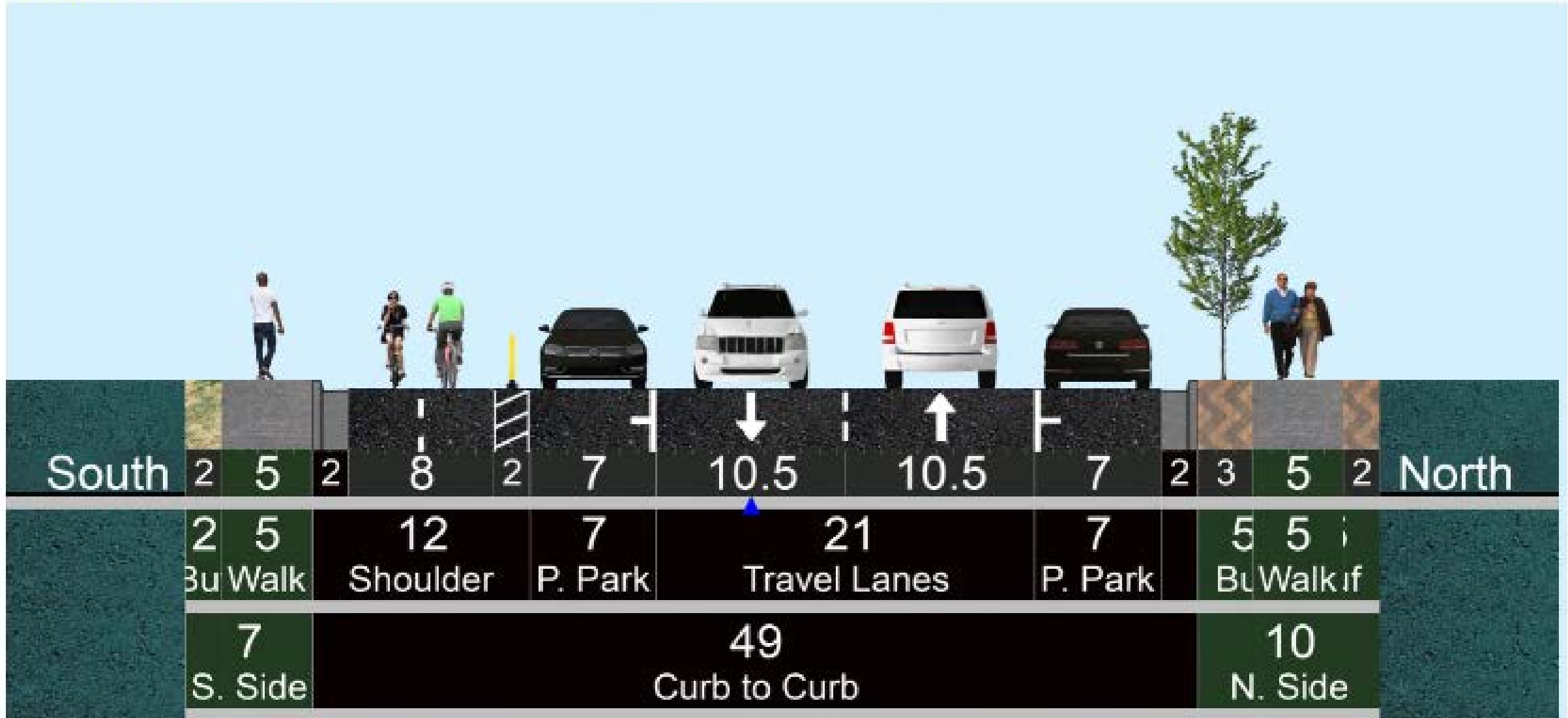


# Potential Future Use

Hoskins Ave

Future

Right-of-Way: 66' of 66'





# Future Use Overlay





# Looking West on Hoskins Ave





# Western View





# Eastern View





# Northern View





# 709 O'Leary SW View





# Unimproved Portion of ROW



Est. 15' of ROW outside of City Improvements