

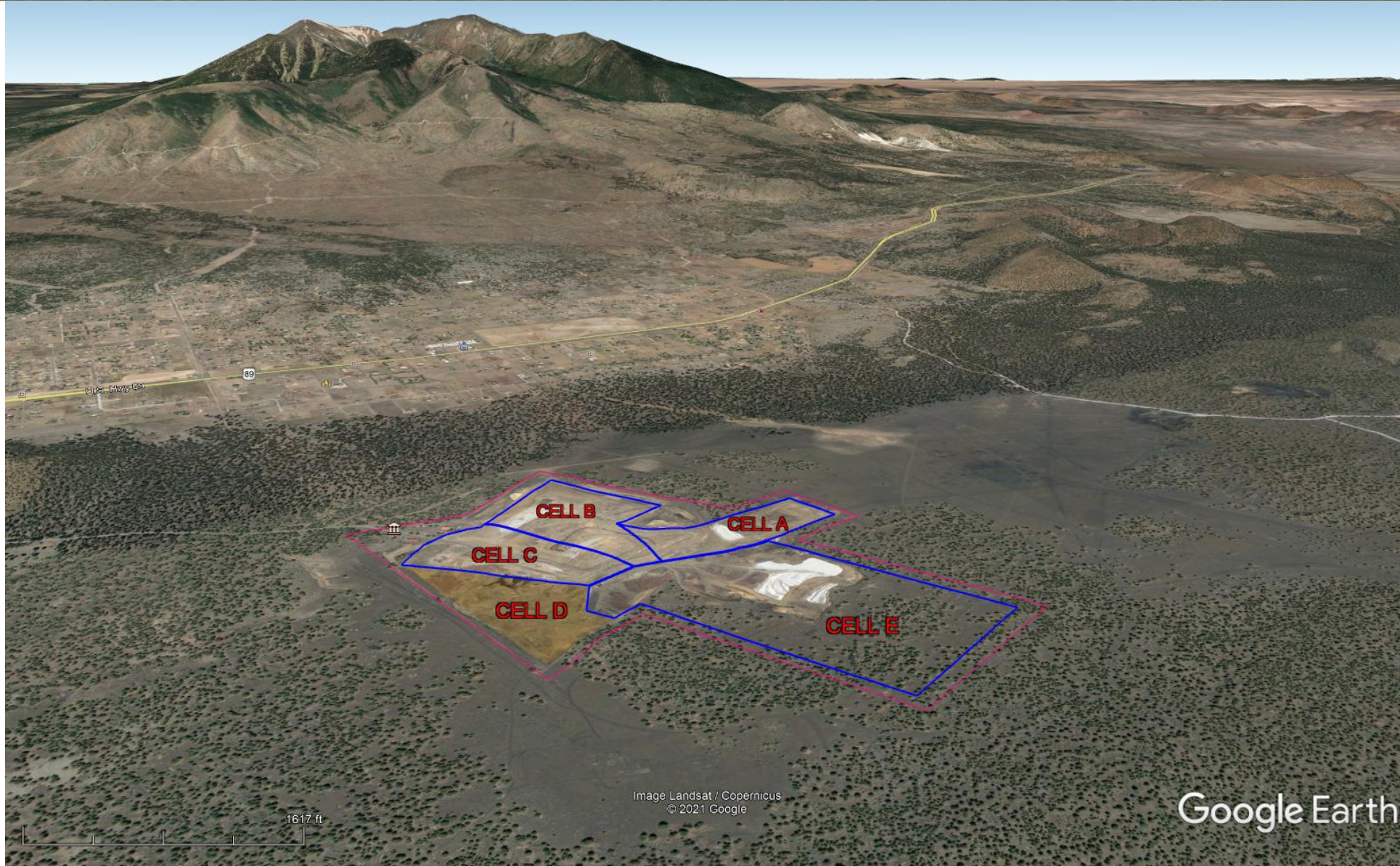
Sequence D Phase-I Excavation

CINDER LAKE LANDFILL





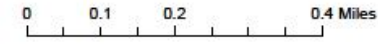
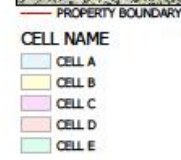
SEQUENCE D-PHASE I



SEQUENCE D-PHASE I

- Phase I Characteristics
 - Cinder Lake Landfill
 - 343 Acres
 - Cell D
 - 33-ACRES
 - Current Operations
 - CELLS B AND C
 - Future Operations
 - CELL D
 - 3 TO 5 YEARS
 - 230,000 CUBIC YARDS OF SOIL AND ROCK TO EXCAVATE

CINDER LAKE LANDFILL-SITE PLAN
CELL/SEQUENCE D EXCAVATION



Phase I

- Construction of on-site infrastructure
 - Rough Grading
 - Construction of Haul Roads
 - Construction of Water Storage Pond-Dust Abatement
- Excavation and processing
 - 35,000 cubic yards rock & soil

Subsequent Phases will Begin in 2nd Half of this Summer

CINDER LAKE LANDFILL-SITE PLAN
CELL/SEQUENCE D EXCAVATION



PROPERTY BOUNDARY
CELL NAME
CELL A
CELL B
CELL C
CELL D
CELL E

0 0.1 0.2 0.4 Miles





SEQUENCE D-PHASE I

Construction Manager at Risk (CMAR) Delivery Method

- Advantages
 - Professional Oversight
 - Owner Advocate
 - Value Engineering
 - Allows staff to pursue multiple projects
 - Haul Roads and Water Storage Pond for Dust Abatement

CINDER LAKE LANDFILL-SITE PLAN
CELL/SEQUENCE D EXCAVATION





SEQUENCE D-PHASE I



Rummel Construction, Inc.

Experience

- Constructed landfills throughout Arizona

Equipment and Manpower

- Owns a fleet of heavy equipment (fleet of dozers, excavators, loaders etc.)





SEQUENCE D-PHASE I



Guaranteed Maximum Price (GMP)

- \$1,094,649.80

Owner Contingency

- \$204,000

Schedule

- 10-weeks

Phase II will be presented to Council in the next 2 months

CINDER LAKE LANDFILL-SITE PLAN
CELL/SEQUENCE D EXCAVATION



- PROPERTY BOUNDARY
- CELL NAME
- CELL A
 - CELL B
 - CELL C
 - CELL D
 - CELL E

0 0.1 0.2 0.4 Miles



Questions?

