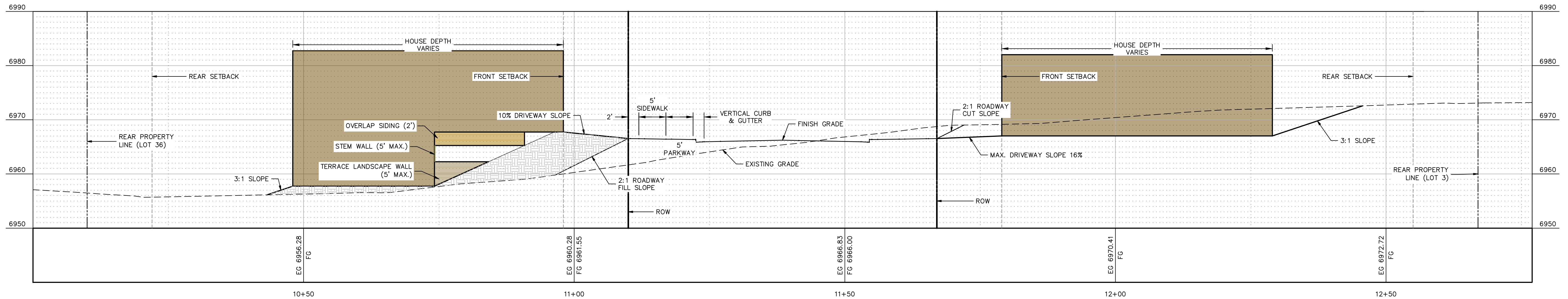
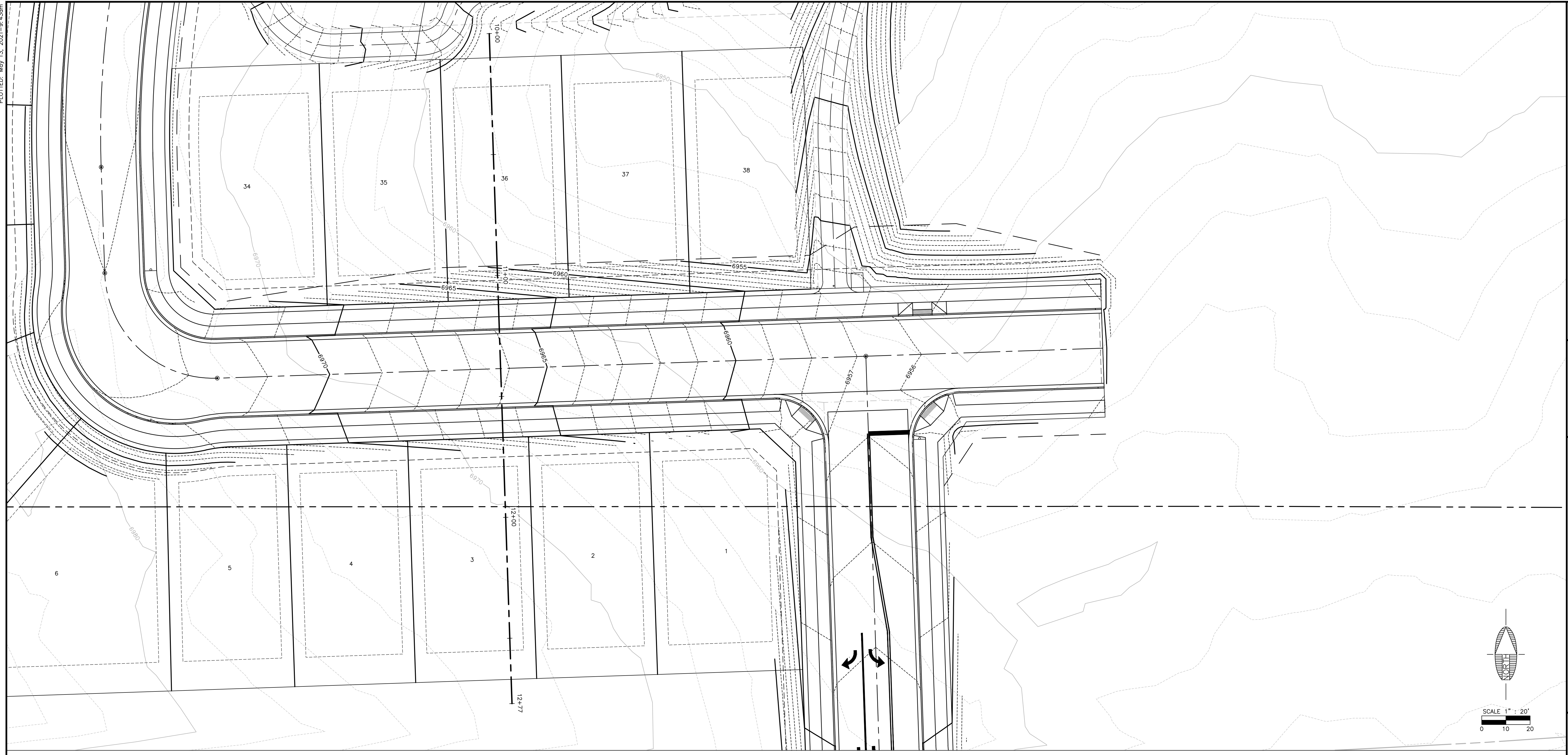


PLOTTED: May 13, 2021 - 9:43am

FILE: P:\2018\18256\DRAWINGS\EXHIBITS\18256-CROSS SECTION.DWG SIRWIN



Juniper Point Phase 1 Cross Section PROFILE  
 H: 1" = 10'  
 V: 1" = 10'  
 (NO VERT. EXAGGERATION)

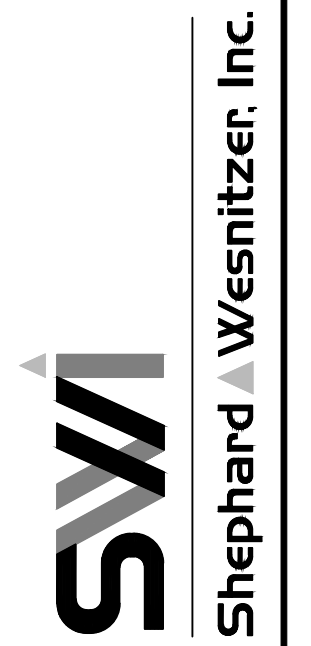
**PRELIMINARY**  
 NOT FOR CONSTRUCTION,  
 BIDDING OR RECORDING

FLAGSTAFF  
 ARIZONA

PARCEL 1 AT JUNIPER POINT

JOB NO: 18256  
 DATE: MAY 21  
 SCALE: AS SHOWN  
 DRAWN: KMF  
 DESIGN: KMF  
 CHECKED: SCI

110 W. Dole Avenue  
 Flagstaff, AZ 86001  
 928.773.0354  
 928.774.8934 fax  
 www.swi-gz.com



NO.	DESCRIPTION	DATE	BY

Call out least two full working days before you begin excavation.

**ARIZONA 811**  
 Arizona One Stop 811 (928-5348)  
 800-841-1111 or 1-800-5146-11 (928-5348)

DRAWING NO.  
**XS01**

SHT NO. OF  
 1 1

C.O.F. Project #PZ-19-00122