



HOTEL MONTE VISIT



# Citizen Petition

Woody Way – One Way

September 21, 2021

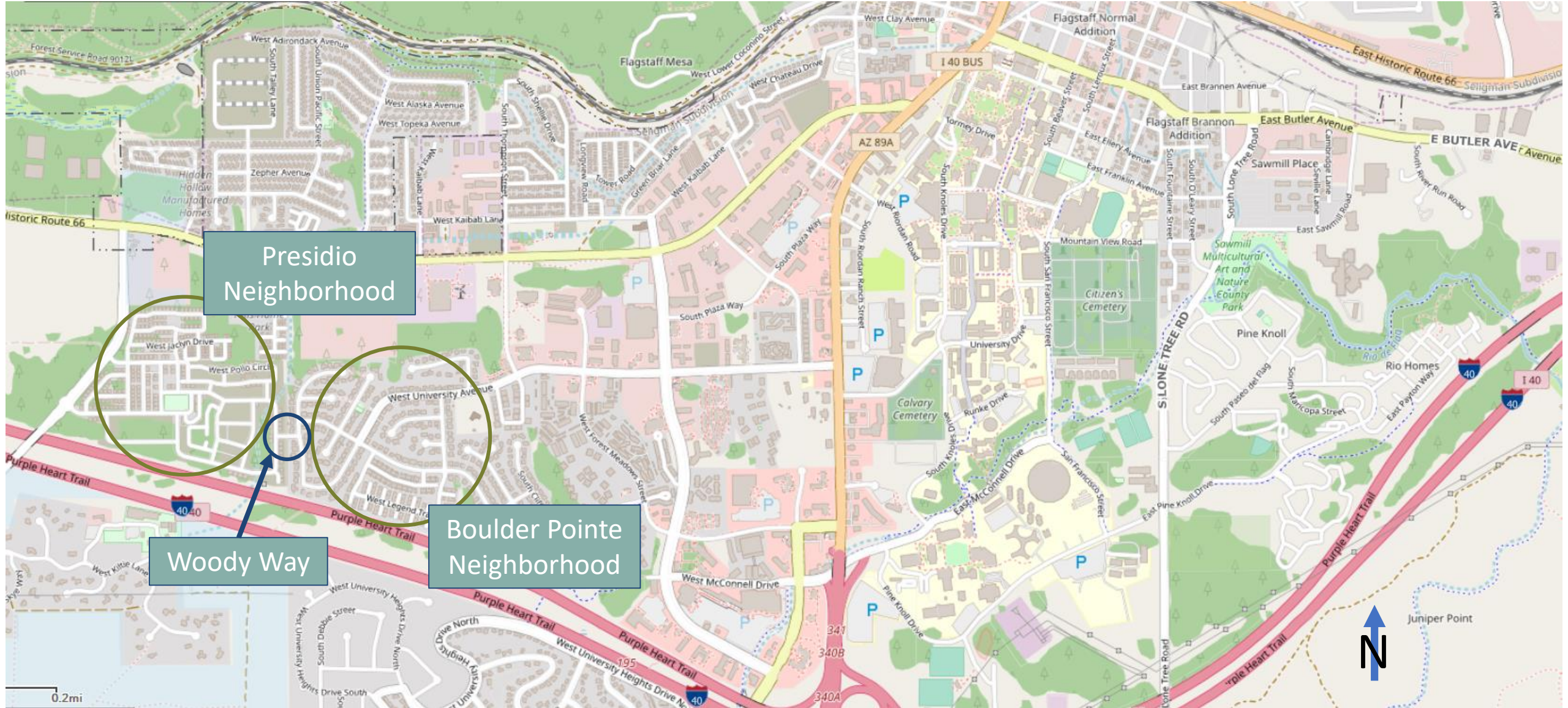


- **Role of Transportation Commission**
- **Background/History of Woody Way**
- **Previous Traffic Counts**
- **Current Pilot Project & Next Traffic Counts**
- **Upcoming discussions with Transportation Commission**





# Vicinity Map





# Role of Transportation Commission



- City Staff and Transportation Commission use the City of Flagstaff's Guidebook for Residential Traffic Management (GRTM)
  - Process to determine if residential neighborhood meets requirements for traffic calming measures
  - Outline for what measures are applicable

## Guidebook for Residential Traffic Management



Final Report-February 2012



Prepared for the  
City of Flagstaff Transportation Commission  
By the Flagstaff Metropolitan Planning Organization & COF Staff



# Background/History of Woody Way

## Transportation Impact Analysis

- Projected +/-580 trips would utilize Woody Way based on Presidio trip generation

## Total Lots Presidio in the Pines

- 515

## October 2019

- 488 building permits issued
- $488/515 = 95\%$

## Gate Removed April 2020





# City Traffic Study

- Committed to before and after traffic volume and speed studies
- Determine if there were any adverse impacts that warrant traffic calming
- Traffic counts before the gate removal were conducted in Fall 2019
- Planned to take after the gate was removed counts in Fall of 2020, but then had severe pandemic traffic impacts
- Transportation Commission decided to move forward with traffic calming mitigations along University due to high speeds



**2317 W Mission Timber**  
 2021 April 2019 Oct/Nov  
 -50<sup>th</sup>: 20 mph -50<sup>th</sup>: 18 mph  
 -85<sup>th</sup>: 23 mph -85<sup>th</sup>: 23 mph  
 -NB: 232 vpd -NB: 103 vpd  
 -SB: 167 vpd -SB: 100 vpd

**1844 W University Ave**  
 2021 April 2020 June 2019 Oct/Nov 2018 Nov  
 -50<sup>th</sup>: 29 mph -50<sup>th</sup>: 29 mph -50<sup>th</sup>: 30 mph -50<sup>th</sup>: 31 mph  
 -85<sup>th</sup>: 33 mph -85<sup>th</sup>: 33 mph -85<sup>th</sup>: 35 mph -85<sup>th</sup>: 35 mph  
 -WB: 811 vpd -WB: 628 vpd -WB: 545 vpd -WB: 522 vpd  
 -EB: 737 vpd -EB: 578 vpd -EB: 509 vpd -EB: 525 vpd

**1822 S Ax Handle**  
 2021 May 2019 Oct/Nov  
 -50<sup>th</sup>: 14 mph -50<sup>th</sup>: 18 mph  
 -85<sup>th</sup>: 16 mph -85<sup>th</sup>: 22 mph  
 -NB: 410 vpd -NB: 49 vpd  
 -SB: 408 vpd -SB: 44 vpd

**1718 W University Ave**  
 2021 April 2020 June  
 -50<sup>th</sup>: 27 mph -50<sup>th</sup>: 27 mph  
 -85<sup>th</sup>: 31 mph -85<sup>th</sup>: 31 mph  
 -WB: 1,299 vpd -WB: 1,173 vpd  
 -EB: 1,229 vpd -EB: 1,051 vpd

**Woody Way**  
 2021 April  
 -50<sup>th</sup>: 17 mph  
 -85<sup>th</sup>: 20 mph  
 -WB: 419 vpd  
 -EB: 387 vpd

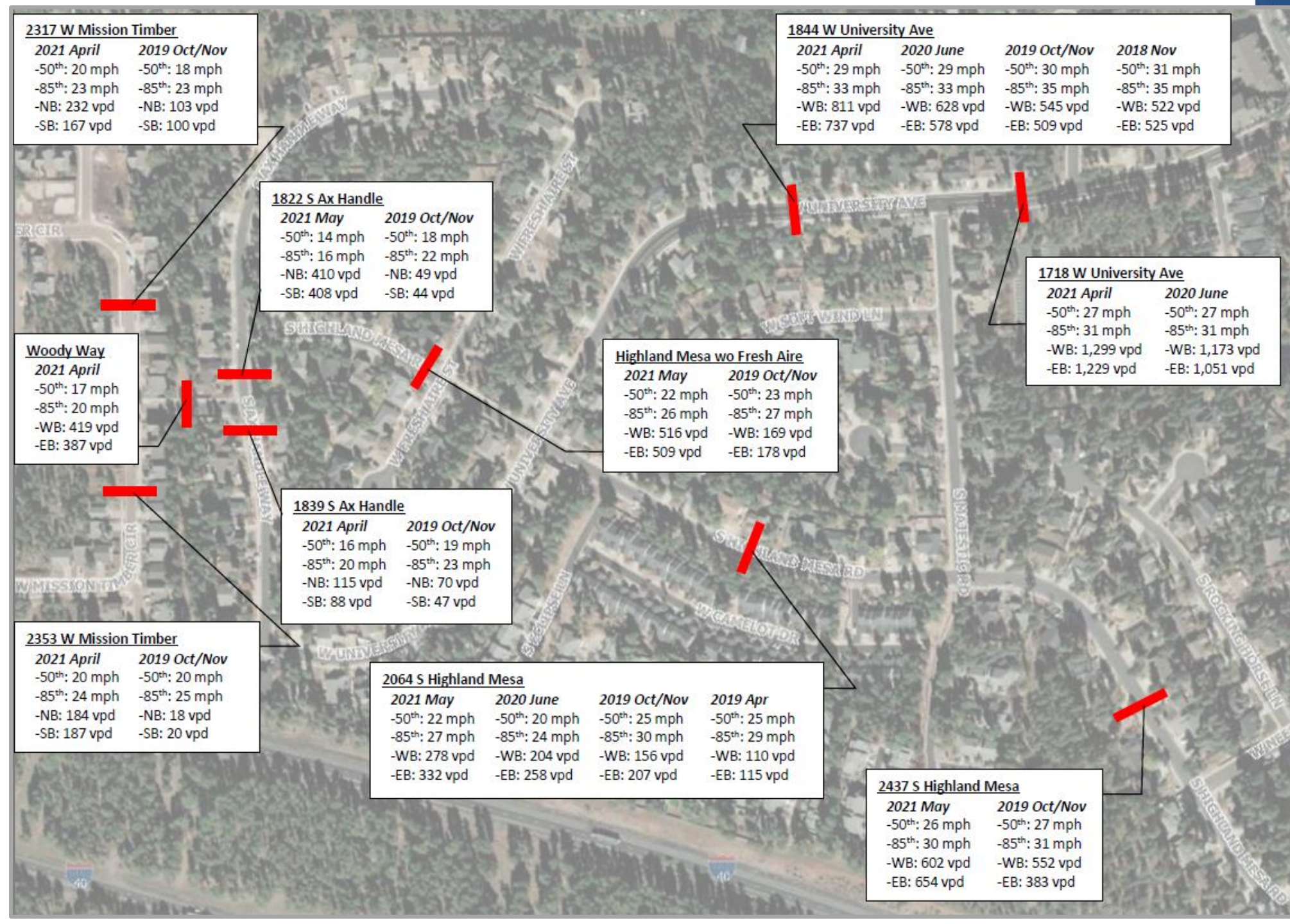
**Highland Mesa wo Fresh Aire**  
 2021 May 2019 Oct/Nov  
 -50<sup>th</sup>: 22 mph -50<sup>th</sup>: 23 mph  
 -85<sup>th</sup>: 26 mph -85<sup>th</sup>: 27 mph  
 -WB: 516 vpd -WB: 169 vpd  
 -EB: 509 vpd -EB: 178 vpd

**1839 S Ax Handle**  
 2021 April 2019 Oct/Nov  
 -50<sup>th</sup>: 16 mph -50<sup>th</sup>: 19 mph  
 -85<sup>th</sup>: 20 mph -85<sup>th</sup>: 23 mph  
 -NB: 115 vpd -NB: 70 vpd  
 -SB: 88 vpd -SB: 47 vpd

**2353 W Mission Timber**  
 2021 April 2019 Oct/Nov  
 -50<sup>th</sup>: 20 mph -50<sup>th</sup>: 20 mph  
 -85<sup>th</sup>: 24 mph -85<sup>th</sup>: 25 mph  
 -NB: 184 vpd -NB: 18 vpd  
 -SB: 187 vpd -SB: 20 vpd

**2064 S Highland Mesa**  
 2021 May 2020 June 2019 Oct/Nov 2019 Apr  
 -50<sup>th</sup>: 22 mph -50<sup>th</sup>: 20 mph -50<sup>th</sup>: 25 mph -50<sup>th</sup>: 25 mph  
 -85<sup>th</sup>: 27 mph -85<sup>th</sup>: 24 mph -85<sup>th</sup>: 30 mph -85<sup>th</sup>: 29 mph  
 -WB: 278 vpd -WB: 204 vpd -WB: 156 vpd -WB: 110 vpd  
 -EB: 332 vpd -EB: 258 vpd -EB: 207 vpd -EB: 115 vpd

**2437 S Highland Mesa**  
 2021 May 2019 Oct/Nov  
 -50<sup>th</sup>: 26 mph -50<sup>th</sup>: 27 mph  
 -85<sup>th</sup>: 30 mph -85<sup>th</sup>: 31 mph  
 -WB: 602 vpd -WB: 552 vpd  
 -EB: 654 vpd -EB: 383 vpd



# Current Pilot Projects



# Current Pilot Projects





# Current Pilot Projects

## Radar Feedback Signs



Slow Down  
away





# Next Traffic Counts

- Radar feedback signs collecting data (stealth mode vs. 'On' mode)
- Setting tubes (within next 2 weeks)
  - X2 on University
  - 1 on Woody Way
- Looking for speed & volume decreases due to added temp traffic calming & radar feedback signs
- School (FUSD, NAU) in session

# Upcoming Discussions w/ Transportation Commission

- Meeting to discuss new data and steps forward w/ Transportation Commission is scheduled for October 6<sup>th</sup>
- Woody Way Gate and the University Ave. Traffic Calming projects are ongoing with the Transportation Commission

