

AG Contract No. _____

ARIZONA DEPARTMENT OF TRANSPORTATION

UTILITY AND RAILROAD ENGINEERING SECTION

UTILITY AGREEMENT

Between

THE STATE OF ARIZONA

and

THE CITY OF FLAGSTAFF

Agreement No.	3770-21-COF
TRACS No.	89A CN 402 F0296 01C
PROJECT NO.	A89-B(224)T
HIGHWAY:	FLAGSTAFF - VALLE HIGHWAY
Location:	City of Flagstaff

THIS AGREEMENT is made between the STATE OF ARIZONA, acting through its DEPARTMENT OF TRANSPORTATION, and THE CITY OF FLAGSTAFF. All lettered exhibits are incorporated and made a part of this agreement by reference and attachment regardless of designation or alphabetical order.

Index

I. RECITALS	3
II. DEFINITIONS	3
III. AGREEMENT	3
A. <i>Construction Requirements</i>	3
1. <i>ADOT to Provide for the Construction of Facilities</i>	4
2. <i>Maintenance</i>	4
B. <i>Transfer of Land Interests</i>	4
C. <i>Permit</i>	4
1. <i>Normal Permit for Non-Prior Rights Facilities</i>	4
2. <i>Joint Occupancy</i>	4
D. <i>Traffic</i>	4
E. <i>Start/Completion Date</i>	4
F. <i>Subcontracting</i>	4
G. <i>Blue Stake</i>	4
H. <i>Acceptance Date</i>	5
IV. SCHEDULES AND PAYMENTS	5
A. <i>UTILITY CONSTRUCTION Schedule</i>	5
B. <i>Payments</i>	5
1. <i>Changes in Scope of Work</i>	5
2. <i>Submission of Invoices</i>	5
3. <i>Payment of Invoices</i>	5
4. <i>Reimbursements</i>	5
V. LIABILITY	5
VI. STATUTORILY MANDATED TERMS	5
A. <i>Arbitration</i>	5
B. <i>Budget Limitations</i>	5
C. <i>Executive order 75-5 and 2009-9</i>	6
D. <i>Cancellation by Governor</i>	6
VII. MISCELLANEOUS CONDITIONS	6
A. <i>Communication for this AGREEMENT</i>	6
B. <i>AGREEMENT Content and Modification</i>	6
C. <i>Laws</i>	6
D. <i>Breach of AGREEMENT</i>	6
E. <i>Records Retention and Audit</i>	6

Exhibit "A": Cost Estimate

Exhibit "B": Plans for Relocation

I. RECITALS

The purpose of this agreement is to enable the Arizona Department of Transportation to complete a highway project. In order to complete this project, it is necessary for the UTILITY to RELOCATE existing UTILITY facilities belonging to the UTILITY.

The UTILITY's facilities to be relocated do not have PRIOR RIGHTS. ADOT will be resetting 27 Manholes and 37 Water Valves for the City of Flagstaff as shown on Exhibit B.

II. DEFINITIONS

- A. ADOT means THE ARIZONA DEPARTMENT OF TRANSPORTATION.
- B. ADOT EMERGENCY means a utility failure, which affects the safety of the motorist or the highway.
- C. AGREEMENT means this specific agreement and all attachments incorporated by reference.
- D. A.R.S. means Arizona Revised Statutes.
- E. BETTERMENT means increased capacity or improvement in the UTILITY's facility.
- F. CONSTRUCTION PROJECT NO. means the roadway construction project number utilized for ADOT construction PROJECT, which is A89-B(224)T.
- G. CONSTRUCTION TRACS NO. means the roadway construction Accounting number utilized for ADOT construction PROJECT, which is 89A CN 402 F0296 01C.
- H. CONTROLLED ACCESS means locations where owners or occupants of abutting lands and other persons have no legal right of access, e.g., freeway lanes and freeway ramps.
- I. DOCUSIGN means the electronic service used for all signatures to this agreement. The DOCUSIGN tracking will be made a part of this agreement by merging the files.
- J. MUTCD means the "Manual on Uniform Traffic Control Devices" and any amendments and/or revisions thereto.
- K. PRIOR RIGHTS means rights associated with one party's use or occupancy of land, or with the facilities located on such land, that are, because of priority in time or other reasons, superior to the rights of the other party.
- L. PROJECT means this ADOT roadway construction project.
- M. RELOCATE or RELOCATION means to move or adjust a UTILITY facility to avoid conflict with PROJECT construction.
- N. RELOCATED FACILITIES means the facilities so moved or adjusted.
- O. UTILITY means THE CITY OF FLAGSTAFF.
- P. UTILITY EMERGENCY means any failure or condition affecting UTILITY's relocated facilities that has a substantial effect on UTILITY's functions and requires immediate action to remedy the failure or condition.
- Q. WORK means engineering, design, preparation of plans, specifications, construction labor, materials and equipment called for in the AGREEMENT, including approved changes in scope.
- R. WORKING DAY means a calendar day, exclusive of Saturdays, Sundays and ADOT recognized holidays, on which weather conditions will permit the UTILITY construction operations to proceed for a major part of the day with the normal working force.

III. AGREEMENT

A. Construction Requirements

The UTILITY shall furnish all necessary engineering, design, plans, specifications, covering the RELOCATION of and/or adjustments to its existing facilities in accordance with the UTILITY plans marked EXHIBIT "B".

1. ADOT to Provide for the Construction of Facilities

ADOT will provide in its contract with ADOT contractor to RELOCATE UTILITY's non-prior right facilities and/or construct betterments.

2. Maintenance

Maintenance operations and associated costs for the UTILITY facilities covered by the AGREEMENT will be the responsibility of the UTILITY.

B. Transfer of Land Interests

Since the UTILITY does not have PRIOR RIGHTS no land interests are transferred.

C. Permit

The UTILITY will obtain a permit from ADOT and will provide applicable insurance for those facilities remaining within the highway right-of-way or for any work proposed within ADOT's right-of-way of the PROJECT.

1. Normal Permit for Non-Prior Rights Facilities

ADOT will grant to the UTILITY a normal permit for non-prior rights facilities remaining within the highway right-of-way.

2. Joint Occupancy

The UTILITY understands ADOT's and all of its agents' right to construct, maintain, and operate highway facilities over/under the UTILITY facilities within the highway Right-of-Way. ADOT retains the right to permit other occupancies.

D. Traffic

The UTILITY shall not maintain, construct, reconstruct, inspect or operate any of its facilities from highway traffic lanes or ramps within the CONTROLLED ACCESS right-of-way. In case of an ADOT EMERGENCY involving UTILITY's facilities, UTILITY shall have reasonable use of the roadway notwithstanding the foregoing restriction. In case of a UTILITY EMERGENCY, UTILITY shall have use of ADOT right of way outside the highway traffic lanes or ramps as it reasonably deems necessary to correct, repair, replace or reconstruct facilities affected by the UTILITY EMERGENCY. The UTILITY shall, as soon as practical during any ADOT EMERGENCY or UTILITY EMERGENCY repairs, provide appropriate safety devices to protect the highway user as set forth in the MUTCD (Including all official changes thereto), for all work within ADOT right of way.

E. Start/Completion Date

The RELOCATION will be accomplished during the PROJECT construction by ADOT.

F. Subcontracting

The RELOCATION will be performed by ADOT's contractor and/or subcontractor.

G. Blue Stake

For WORK performed by ADOT's contractor for the PROJECT, it is understood that ADOT is acting as a third party on behalf of the UTILITY, administering the construction of UTILITY's facilities. At no time is ADOT to be considered the owner of, or locator for, the UTILITY's facilities. ADOT's contractor for the PROJECT shall locate any underground facilities installed by ADOT's contractor (or subcontractor of any tier) for ADOT's PROJECT as prescribed by A.R.S. 40-360.21 through 40-360.32, until (i) the PROJECT is accepted by ADOT and ADOT has given UTILITY one month's prior notice or (ii) until the time the facility is tested and placed into

service by UTILITY, at which time (whichever is earlier) UTILITY shall assume Blue Staking responsibility. The transfer of Blue Stake responsibility to UTILITY shall not affect UTILITY's rights to inspect the RELOCATED FACILITIES, to require correction of any defects, or any other rights under this AGREEMENT.

H. Acceptance Date

The acceptance date of this AGREEMENT shall be the day which the last party executes the AGREEMENT.

IV. SCHEDULES AND PAYMENTS

A. UTILITY CONSTRUCTION Schedule

Any service connections and system startup is the UTILITY's responsibility and will accommodate the PROJECT construction schedule.

B. Payments

The UTILITY will be responsible for the cost of RELOCATION and BETTERMENT and any WORK performed by ADOT for non-PRIOR RIGHTS facilities and/or BETTERMENT facilities. The UTILITY shall pay ADOT's total cost of performing work for the UTILITY. It is agreed that the total cost shall consist of the actual amount paid to ADOT's consultant/contractor for performing any design or construction WORK, all costs will be subject to 25% to cover ADOT's cost of construction engineering, inspection and administration. The estimated total cost for RELOCATION and/or BETTERMENT is set forth in EXHIBIT "A".

1. Changes in Scope of Work

In the event conditions or circumstances require a change in the scope of work on the RELOCATION and/or BETTERMENT as set forth in EXHIBIT "B", each party shall agree in writing to the changes, including payment responsibilities prior to doing the work.

2. Submission of Invoices

Following completion of the PROJECT, ADOT will determine the final total cost. If ADOT's final total cost differs from the estimated amount previously paid by the UTILITY, ADOT will refund the amount of overpayment, or will invoice the UTILITY for the additional amount due. ADOT will make any such refund within ninety (90) calendar days after completion of the project.

3. Payment of Invoices

The UTILITY shall attach payment in the amount of the estimated total cost as set forth in EXHIBIT "A" when it returns this AGREEMENT to ADOT for final execution. The UTILITY agrees to pay ADOT the additional amount due within ninety (90) days of receipt of the final invoice.

4. Reimbursements

Not Applicable.

V. LIABILITY

ADOT and the UTILITY each agree to be liable to the other party for its own acts of negligence and the negligence of its own employees.

VI. STATUTORILY MANDATED TERMS

A. Arbitration

The parties shall use arbitration after exhausting applicable administrative remedies to resolve disputes arising out of this AGREEMENT where the sole relief sought is monetary damages of \$100,000 or less exclusive of interest and costs, as provided in A.R.S. § 12-1518.

B. Budget Limitations

This AGREEMENT is subject to the provisions of Chapter 1 of Title 35, Arizona Revised Statutes.

C. Executive order 75-5 and 2009-9

The UTILITY shall comply with all applicable provisions of Executive Order 75-5 and 2009-9, "Non-Discrimination in Employment by Government Contractors and Subcontractors".

D. Cancellation by Governor

All parties hereby are put on notice that this AGREEMENT is subject to cancellation by the Governor pursuant to A.R.S. § 38-511.

VII. MISCELLANEOUS CONDITIONS

A. Communication for this AGREEMENT

Communication required to be given pursuant to this AGREEMENT shall be:

Arizona Department Of Transportation
Utility and Railroad Engineering Section
Attn.: Engineer - Manager
205 South 17th Avenue, Mail Drop 618E
Phoenix, AZ 85007
FAX: (602) 712-3229

City of Flagstaff Water Services Division
Andy Bertelsen
211 W Aspen Ave.
Flagstaff, AZ 86001
(928) 213-2411
ABertelsen@flagstaffaz.gov

B. AGREEMENT Content and Modification

This AGREEMENT, including any schedules, exhibits or attachments hereto, constitutes the entire agreement between the parties, and no understanding or obligation not expressly set forth herein shall be binding upon them. No modification, amendment or alteration of this AGREEMENT shall be valid unless it is in writing and signed by both parties.

C. Laws

This AGREEMENT shall be governed by the laws of the State of Arizona.

D. Breach of AGREEMENT

The waiver by either party of any breach or failure to provide full performance under any of the terms or conditions of this AGREEMENT shall not be construed as a waiver of any other term or condition, or of any subsequent breach of the same or any other term or condition.

E. Records Retention and Audit

Not Applicable.

IN WITNESS WHEREOF, the parties hereto have executed this AGREEMENT.

THE CITY OF FLAGSTAFF

ARIZONA DEPARTMENT OF
TRANSPORTATION

By: _____

JOHN S. HALIKOWSKI, DIRECTOR

Title: Mayor

By: _____

Its: Paul Deasy

Victoria D. Bever, Manager
Utility & Railroad Engineering

Date: _____

Date: _____

ACKNOWLEDGMENT BY ATTORNEY GENERAL

AG Contract No. _____

APPROVED

Assistant Attorney General
Attorney for Department of Transportation

AGREEMENT: 3770-21-COF

EXHIBIT A

Agreement No.	3770-21-COF
TRACS No.	89A CN 402 F0296 01C
PROJECT No.	A89-B(224)T
Location	City of Flagstaff

Agreement Scope of Work: ADOT will be resetting 27 Manholes and 37 Water Valves for the City of the Flagstaff

SUMMARY OF ESTIMATED COSTS

ITEM NUMBER	DESCRIPTION	UNIT	QTY	UNIT COST	TOTAL
5050201	RESET FRAM AND COVER FOR MANHOLE	EACH	27	\$1,500	\$40,500
8080646	RESET FRAME AND COVER FOR WATER VALVE	EACH	37	\$800	\$29,600
				SUBTOTAL	\$70,100
				25% for Construction, Engineering, & Administration	\$17,525
				TOTAL ESTIMATE	\$87,625

AMOUNT DUE TO ADOT AT DATE OF AGREEMENT SIGNING BY CITY OF FLAGSTAFF = \$87,625

EXHIBIT "A"

SIDEWALK AND CURB AND GUTTER TABLE										
R/L of CL	Begin Station	End Station	Remove/Replace		Comments	R/L of CL	Begin Station	End Station	Remove/Replace	
			Sidewalk (Sq Ft)	Curb and Gutter (Ft)					Sidewalk (Sq Ft)	Curb and Gutter (Ft)
Lt	7399+20	7399+40		20		Lt	7432+03	7432+45		20
Lt	7400+30	7402+46	1,081			Lt	7434+38	7434+43	25	
Lt	7401+96	7402+46		50		Lt	7434+96	7435+19	115	
Rt	7402+09	7402+17		8		Lt	7436+27	7436+35	40	
Lt	7403+57	7403+68	55	11		Rt	7440+71	7440+81	50	
Lt	7403+62	7405+45	1,833			Lt	7440+78	7440+94	64	SW W=4'
Lt	7405+20	7405+45		25		Lt	7441+28	7441+50	110	
Rt	7406+16	7406+50	168			Lt	7441+58	7448+59	510	
Lt	7406+20	7412+65	3,225			Lt	7449+03	7450+30	637	
Rt	7406+89	7407+34	175			Rt	7449+10	7449+60	240	
Rt	7407+84	7409+37	775			Rt	7450+04	7451+82	897	
Rt	7409+68	7410+80	560			Lt	7450+74	7451+98	618	
Rt	7411+50	7411+62	60			Rt	7452+41	7453+63	613	
Lt	7413+19	7416+29	1,547			Lt	7454+27	7454+89	518	
Rt	7416+08	7416+14	30			Rt	7454+35	7455+80	725	
Rt	7417+28	7419+63	1,176			Lt	7455+91	7456+01	60	SW W=6'
Rt	7418+19	7418+43		24		Lt	7457+70	7458+02	160	
Rt	7420+53	7425+07	2,270			Lt	7459+46	7458+66	100	
Rt	7423+04	7423+20		16		Lt	2233+45	2233+52	48	
Rt	7424+37	7424+67		30		Rt	2235+55	2235+99	220	
Lt	7424+85	7425+01		16		Lt	2235+90	2236+08	90	
Lt	7425+80	7425+92	48	12	SW W=4'	Rt	2236+43	2236+58	75	
Rt	7426+25	7426+34	54		SW W=6'	Lt	2236+66	2236+86	120	SW W=6'
Rt	7427+69	7428+02		36		Lt	2237+41	2237+66	200	
Rt	7428+08	7429+38	780		SW W=6'	Rt	2237+89	2238+09	100	
Lt	7428+40	7428+63	101		SW W=4'	Lt	2240+27	2240+47	160	
Rt	7430+30	7430+37	42		SW W=6'	Rt	2240+45	2240+55	50	
Rt	7430+76	7434+18	2,052		SW W=6'	Rt	2241+21	2241+26	25	
Lt	7431+83	7432+03	80		SW W=4'	Rt	2242+54	2242+68	68	14

Totals This Column: 16,112 248

Totals This Column: 6,638 34

DRIVEWAY TABLE					
Offset (Ft)	Station	Turnout Width (Ft)	Remove/Replace		
			Area (Sq Ft)	Curb and Gutter (Ft)	
32.8	Rt	7406+75	35	426	49
33.0	Rt	7407+59	35	426	49
32.5	Lt	7412+92	40	471	54
32.7	Lt	7424+63	30	381	44
32.8	Lt	7426+14	30	381	44
33.6	Lt	7427+20	30	381	44
32.7	Lt	7428+26	15	246	29
32.4	Rt	7429+58	25	336	39
32.4	Rt	7430+57	25	336	39
32.3	Rt	7434+37	25	336	39
32.5	Rt	7439+35	40	471	54
32.5	Rt	7440+08	50	561	64
32.6	Lt	7441+11	20	291	64
32.4	Lt	7441+81	50	561	64
32.4	Lt	7441+81	30	381	44
32.5	Lt	7448+81	30	381	44
32.8	Rt	7449+82	30	381	44
32.6	Lt	7450+52	30	381	44

Totals This Sheet: 7,128 852

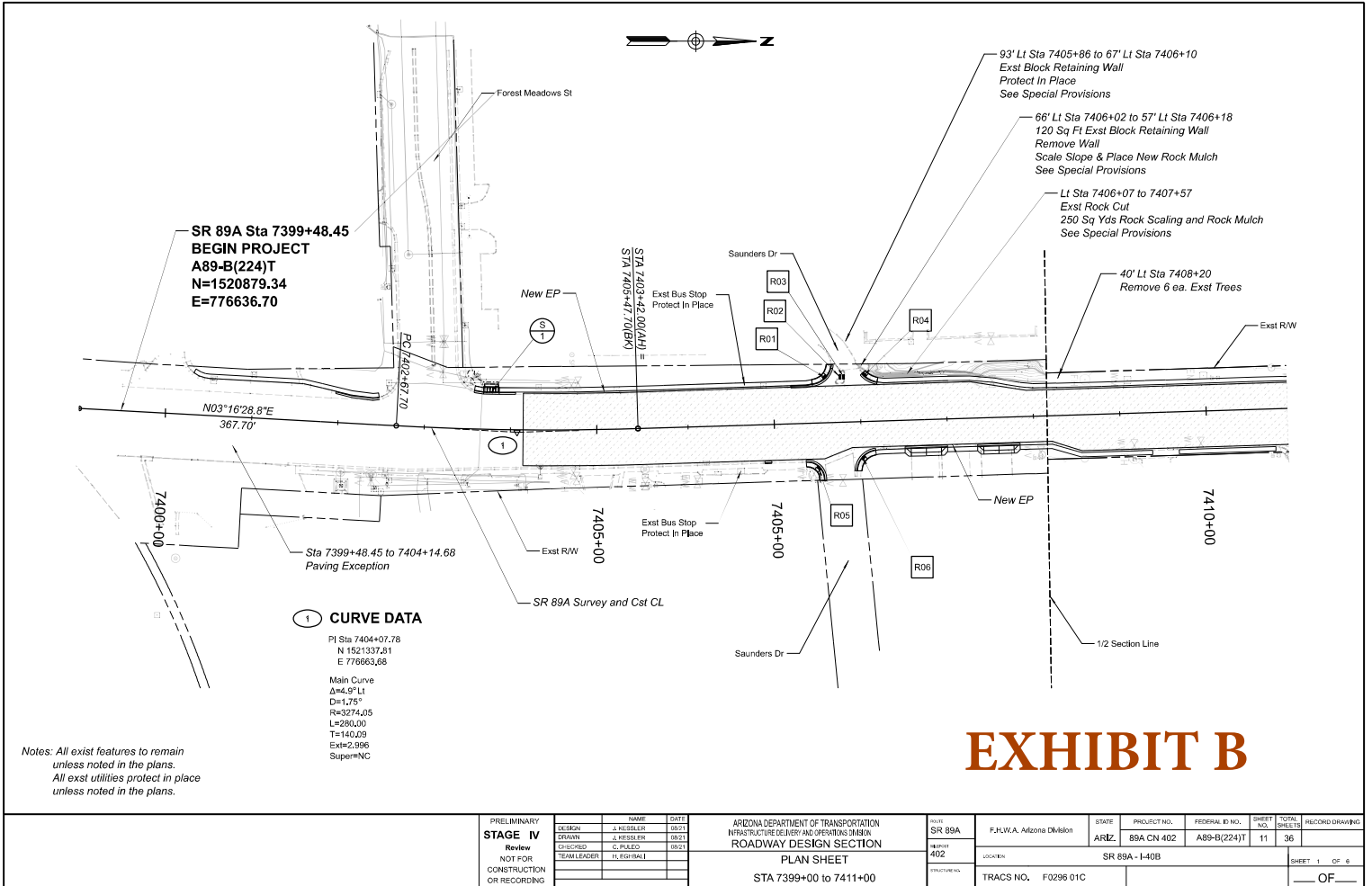
Notes:
See Curb, Gutter, and Sidewalk Summary for additional notes
Curb and Gutter Std C-05.10 Type D h=6"
Driveways Std C-05.20

FRAME AND COVER ADJUSTMENT TABLE					
Offset (Ft)	Station	Type	Offset (Ft)	Station	Type
65.0	Lt	7403+19	12.1	Rt	7458+91
45.1	Lt	7404+88	17.2	Rt	2224+92
41.9	Lt	7407+53	24.4	Lt	2226+10
37.4	Rt	7409+16	19.0	Rt	2227+06
36.9	Rt	7409+92	17.7	Rt	2227+78
33.2	Lt	7411+09	11.1	Lt	2227+86
37.8	Lt	7417+38	10.5	Rt	2227+87
45.3	Rt	7418+90	35.4	Rt	2228+05
47.1	Lt	7420+57	24.0	Lt	2228+13
45.4	Rt	7421+49	18.8	Rt	2230+04
37.9	Rt	7424+52	33.8	Lt	2235+46
38.7	Rt	7437+56	23.5	Lt	2231+31
37.9	Lt	7437+83	37.3	Rt	2231+60
39.3	Lt	7438+69	29.0	Rt	2232+83
16.2	Rt	7440+71	0.5	Rt	2233+05
38.1	Lt	7442+56	27.5	Rt	2233+05
29.3	Rt	7445+91	37.5	Rt	2233+14
26.4	Rt	7446+50	41.8	Rt	2233+46
25.2	Rt	7446+51	21.4	Rt	2233+73
42.5	Rt	7451+33	23.0	Lt	2235+54
19.6	Rt	7451+97	23.5	Rt	2236+02
21.4	Rt	7452+34	11.0	Lt	2236+76
12.3	Rt	7453+59	22.4	Rt	2237+15
94.6	Lt	7454+62	21.1	Rt	2238+57
20.1	Rt	7454+75	23.5	Rt	2238+99
48.9	Lt	7455+96	23.5	Rt	2240+22
20.5	Rt	7456+16	23.3	Lt	2241+14
41.5	Lt	7456+81	18.7	Rt	2241+65
18.6	Rt	7457+33	0.3	Lt	2241+91
11.9	Rt	7457+41	0.3	Lt	2242+06
11.9	Rt	7457+41	35.5	Lt	2242+08
24.5	Lt	7458+12	15.9	Rt	2242+12
13.1	Lt	7458+23	20.6	Rt	2242+14
20.3	Rt	7458+51	24.0	Rt	2242+22

EXHIBIT B

Notes:
See Curb, Gutter, and Sidewalk Summary Sheets for additional notes and sidewalk ramp locations.
All Sidewalk Std C-05.20 W=5' unless otherwise noted
All Curb & Gutter Std C-05.10 Type D h=6"
All Driveways Std C-05.20

PRELIMINARY STAGE IV Review NOT FOR CONSTRUCTION OR RECORDING	DESIGN	NAME	DATE	ARIZONA DEPARTMENT OF TRANSPORTATION INFRASTRUCTURE DESIGN AND OPERATIONS DIVISION ROADWAY DESIGN SECTION	PROJECT NO.	STATE	PROJECT NO.	FEDERAL ID NO.	SHEET NO.	TOTAL SHEETS	RECORD DRAWING	
	DRAWN	J. KESLER	08/21		SR 89A	ARIZ.	69A CN 402	A89-B(224)T	4	36		
	CHECKED	C. PALSO	08/21		402							
	TEAM LEADER	N. ECHIBALU										
				DESIGN SHEET	LOCATION		SR 89A - I-408				SHEET 3 OF 3	
					TRACS NO.		F0298 01C				OF	



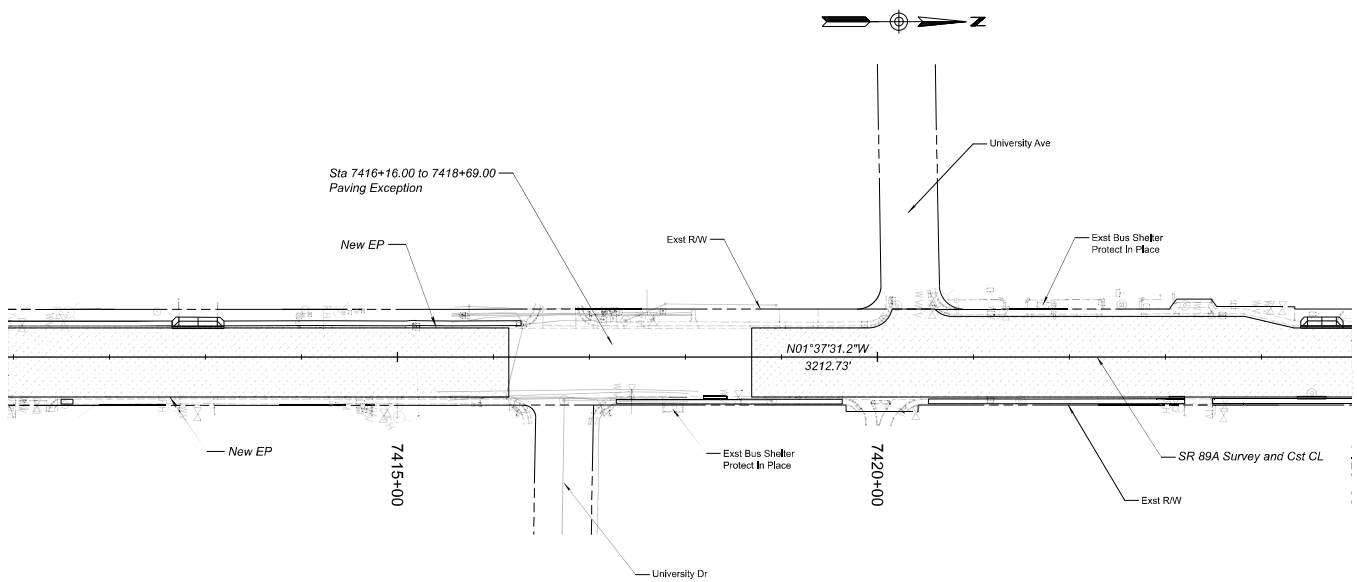


EXHIBIT B

Notes: All exst features to remain unless noted in the plans.
All exst utilities protect in place unless noted in the plans.

PRELIMINARY STAGE IV Review NOT FOR CONSTRUCTION OR RECORDING	DESIGN	A. KESSLER	08/21	ARIZONA DEPARTMENT OF TRANSPORTATION INFRASTRUCTURE DESIGN AND OPERATIONS DIVISION ROADWAY DESIGN SECTION PLAN SHEET STA 7411+00 TO 7425+00	PROJECT NO.	SR 89A	STATE	F.L.W.A. Arizona Division	ARIZ.	PROJECT NO.	69A CN 402	FEDERAL ID NO.	A89-B(224)T	SHEET NO.	12	TOTAL SHEETS	36	RECORDED DRAWING
	DRAWN	A. KESSLER	08/21		NUMBER	402	LOCATION	SR 89A - I-40B	SHEET 2 OF 6									
	ENGINEER	C. PALCO	08/21		ENCLOSURE NO.	TRACS NO.	F0296 01C	OF										
	TEAM LEADER	N. EGRIAL																

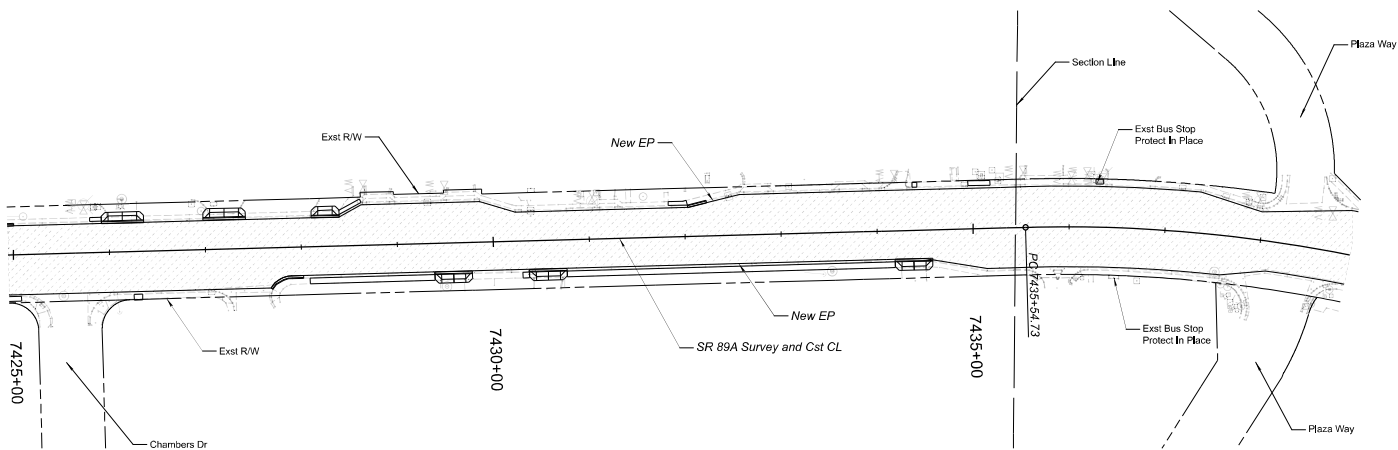


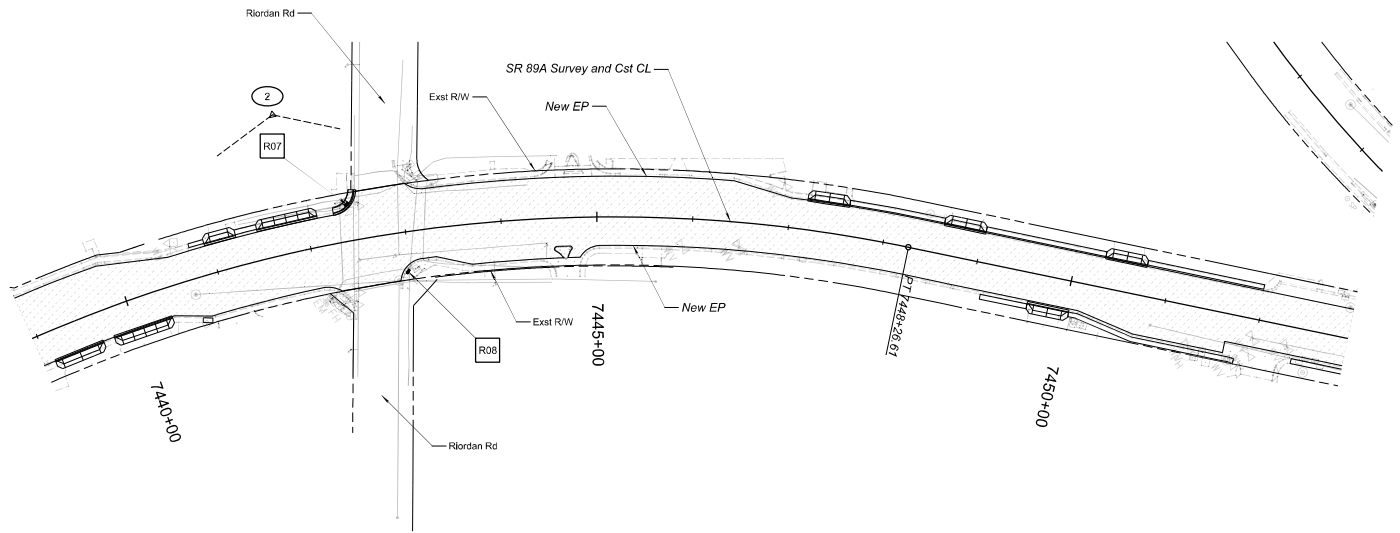
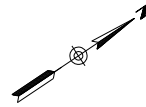
EXHIBIT B

Notes: All exist features to remain unless noted in the plans.
All exist utilities protect in place unless noted in the plans.

PRELIMINARY STAGE IV Review NOT FOR CONSTRUCTION OR RECORDING	DESIGN	A. KESSLER	08/21	ARIZONA DEPARTMENT OF TRANSPORTATION INFRASTRUCTURE DESIGN AND OPERATIONS DIVISION ROADWAY DESIGN SECTION PLAN SHEET STA 7425+00 to 7439+00	PROJECT NO.	SR 89A	STATE	FJLW.A, Arizona Division	ARIZ.	PROJECT NO.	69A CN 402	FEDERAL ID NO.	A89-B(224)T	SHEET NO.	13	TOTAL SHEETS	36	RECORDED DRAWING
	DRAWN	A. KESSLER	08/21		NUMBER	402	LOCATION	SR 89A - I-40B						SHEET 3 OF 6				
	ENGINEER	C. PALCO	08/21		ENCLOSURE NO.	TRACS NO. F0296 01C												
	TEAM LEADER	N. EGRIALTI																

2 CURVE DATA

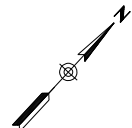
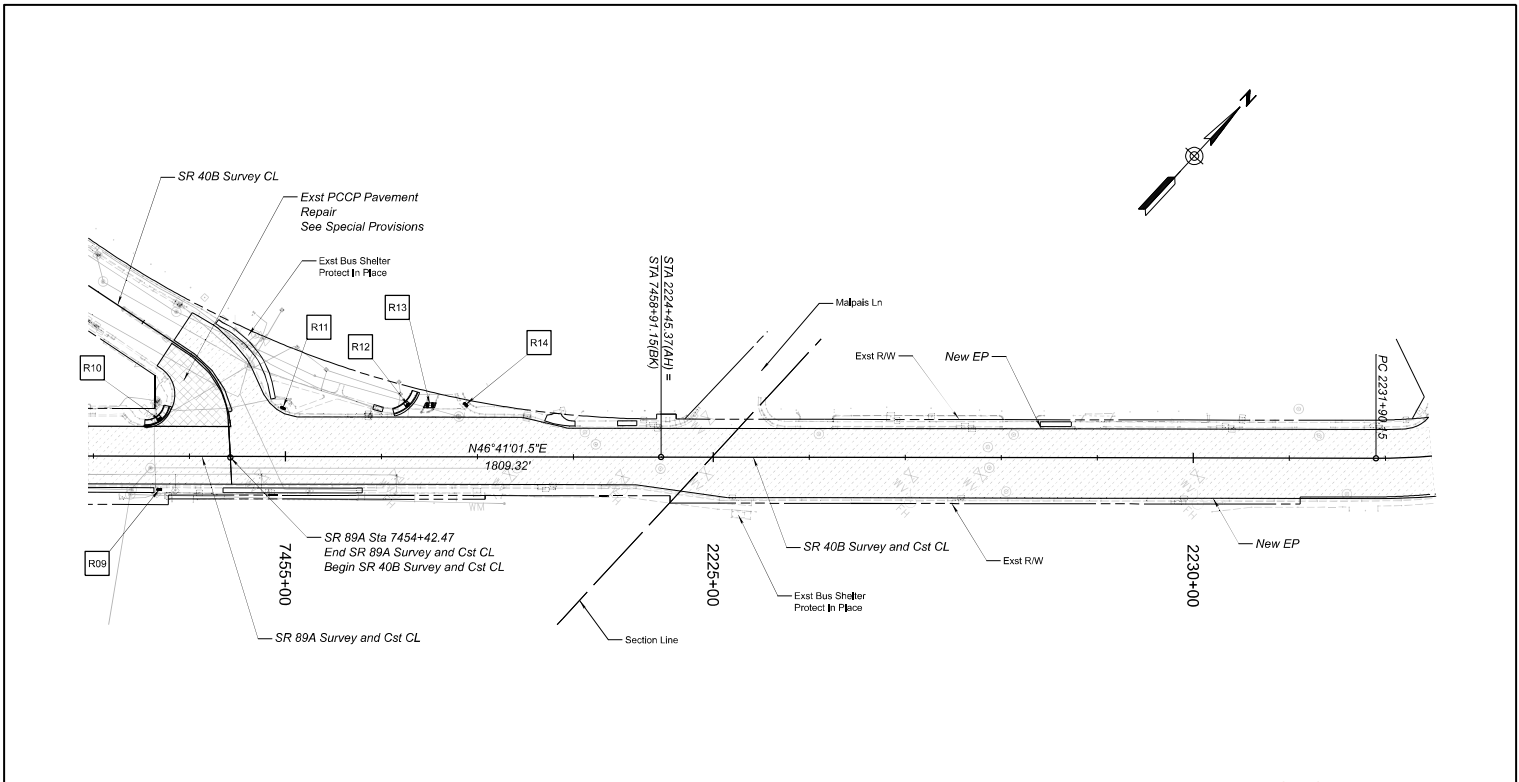
PI Sta 7442+31.23
 N 1525365.51
 E 776549.40
 Main Curve
 Δ=49.31° Rt
 D=3.80'
 R=1508.48
 L=1071.88
 T=676.50
 Ext=144.75
 Super=NC



Notes: All exst features to remain unless noted on the plans.
 All exst utilities protect in place unless noted on the plans.

EXHIBIT B

PRELIMINARY STAGE IV Review NOT FOR CONSTRUCTION OR RECORDING	DESIGN	A. KESSLER	08/21	ARIZONA DEPARTMENT OF TRANSPORTATION INFRASTRUCTURE DESIGN AND OPERATIONS DIVISION ROADWAY DESIGN SECTION PLAN SHEET STA 7439+00 to 7453+00	PROJECT NO.	FJLWA, Arizona Division	STATE	ARIZ.	PROJECT NO.	69A CN 402	FEDERAL ID NO.	A89-B(224)T	SHEET NO.	14	TOTAL SHEETS	36	RECORDED DRAWING
	DRAWN	A. KESSLER	08/21		NUMBER	402	LOCATION	SR 89A - I-408		SHEET 4 OF 6							
	ENGINEER	C. PALCO	08/21		REVISION NO.	TRACS NO. F0296 01C				OF							
	TEAM LEADER	H. EGRIAL															



Notes: All exst features to remain unless noted on the plans.
All exst utilities protect in place unless noted on the plans.

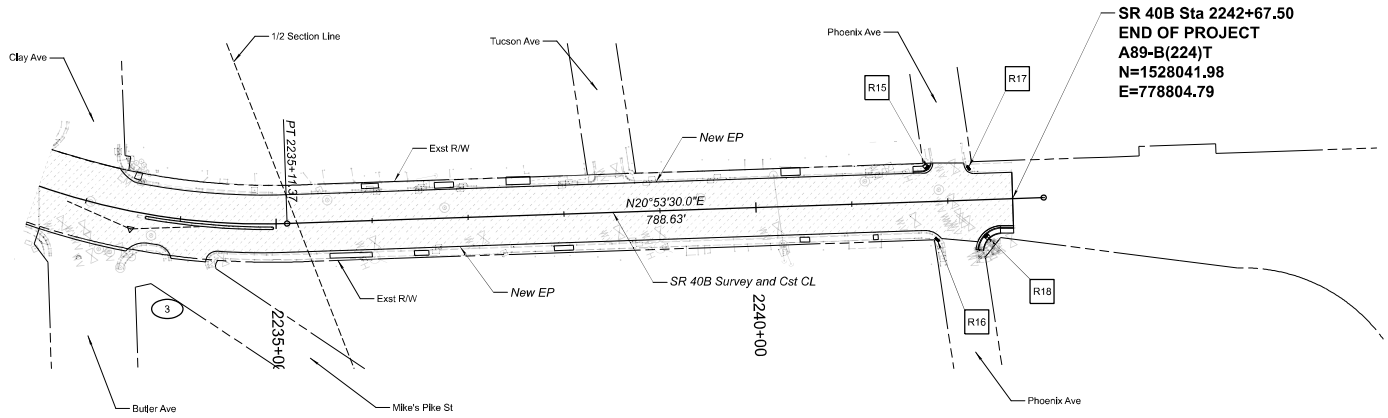
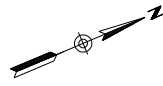
EXHIBIT B

PRELIMINARY STAGE IV Review NOT FOR CONSTRUCTION OR RECORDING	DESIGN	A. KESSLER	08/21	ARIZONA DEPARTMENT OF TRANSPORTATION INFRASTRUCTURE DESIGN AND OPERATIONS DIVISION ROADWAY DESIGN SECTION PLAN SHEET STA 7453+00 Bk to 2232+00 Ahd	PROJECT NO.	FJLW.A. Arizona Division	STATE	ARIZ.	PROJECT NO.	69A CN 402	FEDERAL ID NO.	A89-B(224)T	SHEET NO.	15	TOTAL SHEETS	36	RECORDED DRAWING	
	DRAWN	A. KESSLER	08/21		NUMBER	402	LOCATION	SR 89A - I-40B				SHEET 5 OF 6						
	ENGINEER	C. PALCO	08/21		TRACS NO.	F0296 01C												
	TEAM LEADER	N. EGRIALTI			OF													

3 CURVE DATA

PI Sta 2233+53.53
 N 1527182.83
 E 778476.90

Main Curve
 Δ=25.79°
 D=8,029'
 R=713.57
 L=321.22
 T=163.38
 Ext=18.46
 Super=NC



**SR 40B Sta 2242+67.50
 END OF PROJECT
 A89-B(224)T
 N=1528041.98
 E=778804.79**

Notes: All exst features to remain
 unless noted on the plans.
 All exst utilities protect in place
 unless noted on the plans.

EXHIBIT B

PRELIMINARY STAGE IV Review NOT FOR CONSTRUCTION OR RECORDING	<table border="1"> <thead> <tr> <th>NAME</th> <th>DATE</th> </tr> </thead> <tbody> <tr> <td>DESIGN</td> <td>A. KESSLER (05/21)</td> </tr> <tr> <td>DRAWN</td> <td>A. KESSLER (05/21)</td> </tr> <tr> <td>ENGINEER</td> <td>C. PALCO (05/21)</td> </tr> <tr> <td>TEAM LEADER</td> <td>N. EGRIALTI</td> </tr> </tbody> </table>	NAME	DATE	DESIGN	A. KESSLER (05/21)	DRAWN	A. KESSLER (05/21)	ENGINEER	C. PALCO (05/21)	TEAM LEADER	N. EGRIALTI	ARIZONA DEPARTMENT OF TRANSPORTATION INFRASTRUCTURE DESIGN AND OPERATIONS DIVISION ROADWAY DESIGN SECTION		PROJECT NO. SR 89A	STATE F.L.W.A. Arizona Division	PROJECT NO. ARIZ. 89A CN 402	FEDERAL ID NO. A89-B(224)T	SHEET NO. 16	TOTAL SHEETS 36	RECORDED DRAWING
	NAME	DATE																		
	DESIGN	A. KESSLER (05/21)																		
	DRAWN	A. KESSLER (05/21)																		
ENGINEER	C. PALCO (05/21)																			
TEAM LEADER	N. EGRIALTI																			
PLAN SHEET			NUMBER 402	LOCATION SR 89A - I-40B		SHEET 6 OF 6		OF												
STA 2232+00 to 2243+00			PROJECT NO. TRACS NO. F0296 01C																	
A8984 7/30/2021 1:18:34 PM Z:\Road Workspace 1\Location\Conf\gundell\FromSpace\AZDOT\WorkSet\0296\Agr\Roadway\0296_Plan-SR 89A.dgn (1 Model Name: Plan 6 Sheet)																				