



ENGINEERING & CAPITAL IMPROVEMENTS DIVISION

CAPITAL IMPROVEMENTS SECTION

Monthly Capital Projects Report

January 2021

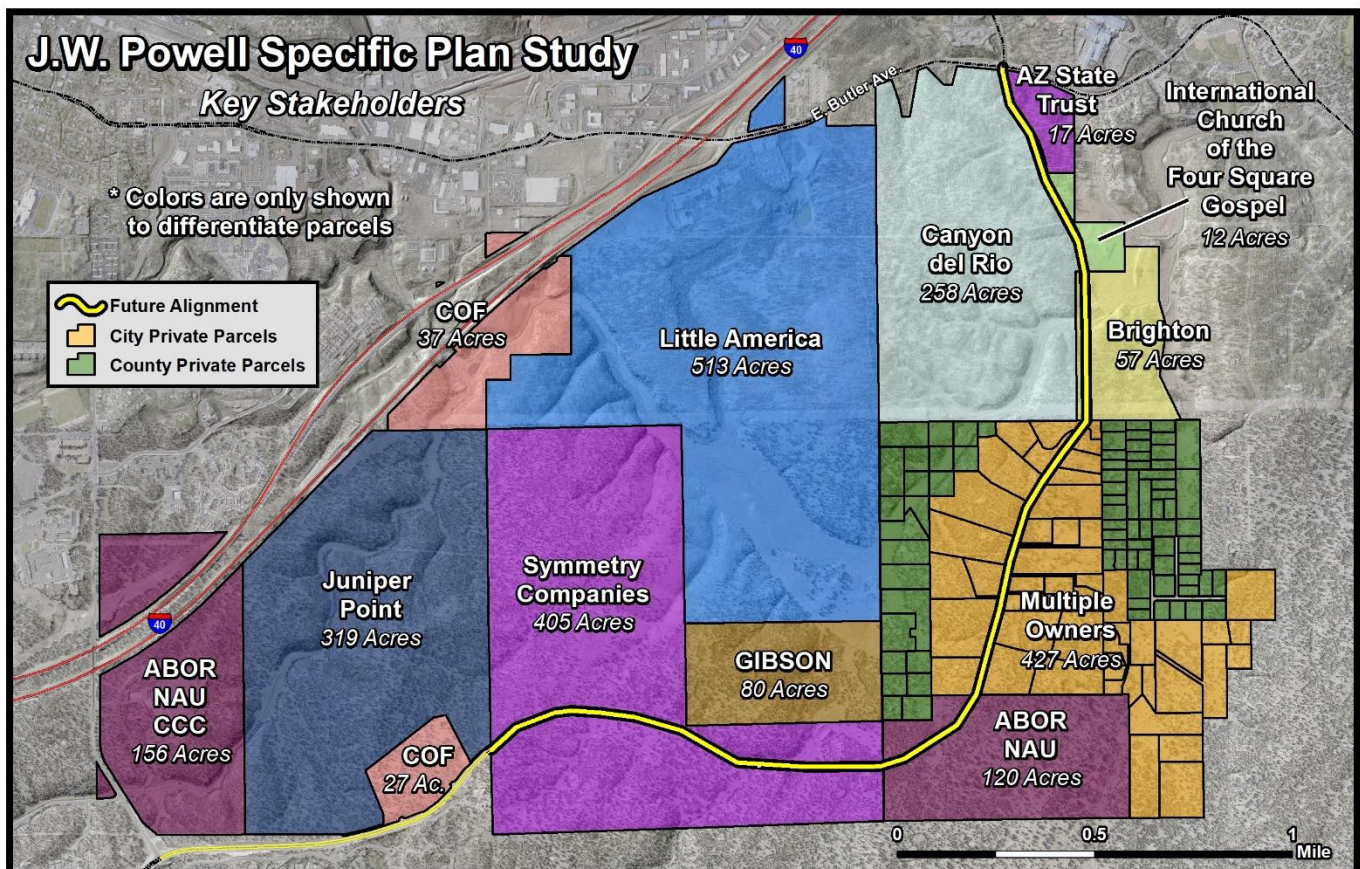
J.W. Powell Specific Plan Study (PLANNING PHASE)

FUND: GENERAL GOVERNMENT & TRANSPORTATION TAX

Description – The purpose of the John Wesley Powell Specific Plan Study (Study) is to develop a specific plan to guide the future private development of public infrastructure, utilities and facilities. Phase 1 of the project is the conceptual design of the future public infrastructure (roads), public utilities and facilities location analysis. The conceptual design is required to meet the full City infrastructure standards including street improvements, potable water, sanitary sewer mains, storm drain systems, street lighting and associated appurtenances. Phase 1 of the Study includes a sanitary sewer system master plan for the area. A water system master plan was previously developed for the area. Phase 2 of the Study is development of the planning elements necessary to gain City Council approval of a Specific Plan.

Project Update:

- City Staff is working with Peak Engineering, Swaback, and BetaPr to finalize the focused public outreach materials and discuss timelines for focused public outreach meetings.
- City Staff is preparing a CCR to introduce the JWP Specific Plan Study and share the commencement of the public outreach with project-adjacent property owners.
- Phase 1 should conclude in summer 2021 with Phase 2 starting thereafter.



Proposed alignment of new J.W. Powell Boulevard and Fourth Street; denoted by yellow line

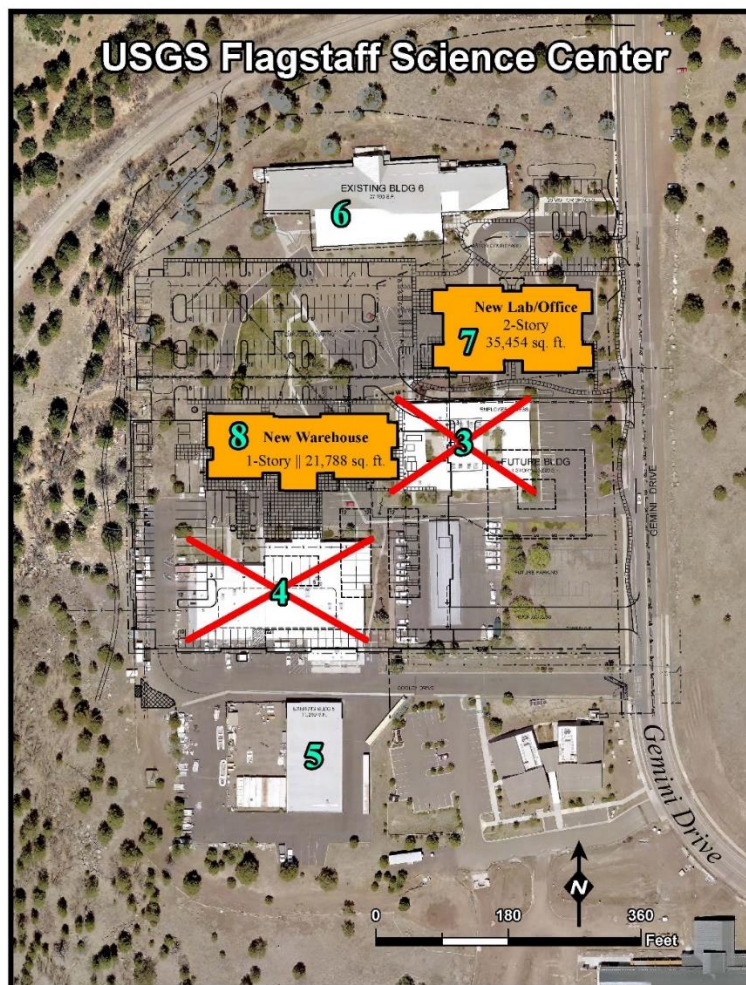
USGS Flagstaff Science Center Campus - Build to Suit (DESIGN PHASE)

FUND: GENERAL GOVERNMENT

Description – This project will bring new improvements to the USGS Flagstaff Science Center Campus, located just south of Buffalo Park. There will be two existing buildings demolished (buildings 3 and 4), and two new buildings constructed (buildings 7 and 8). One of the new buildings will be a new lab and office facility while the second building will be a new warehouse. These two new buildings will require a minimum certification from the U.S. Green Building Council's Leadership in Energy and Environmental Design (USGBC) of "Green Building Rating System" of "LEEDTM Silver for New Construction (NC)."

Project Update:

- City Staff will meet with USGS the second week of January to walk the proposed fiber optic locations on the Science Center Campus.
- City Staff is working to draft a Request for Statement of Qualifications (RSOQs) to procure a design-build contractor.



*USGS Flagstaff Science Center Campus.
Buildings to be constructed are shown in orange.
Buildings 3 and 4 (shown with red a X) will be demolished.*

City of Flagstaff Municipal Court (CONSTRUCTION PHASE)

FUND: GENERAL GOVERNMENT

Description – The City of Flagstaff Municipal Court Project is a 40,000 SF facility that will provide full user services to the City Court, the City Prosecutor’s Office, and the public. It is located two blocks north of the existing Court facility, at 101 W. Cherry. Amenities include: four court rooms, one hearing room, administrative staff offices for the Court and Prosecution, in-custody detention and processing, and customer service facilities

Project Update:

- KCS continues to work to complete punch list items.
- Demolition of the old buildings is contingent on franchise utility relocations.



Flagstaff Municipal Court Facility, looking at the main entrance – northeast corner

La Plaza Vieja Traffic Calming (DESIGN PHASE)

FUND: TRANSPORTATION TAX (SAFETY) & HOUSING [CDBG] ALLOCATION

Description – The project is assisting the neighborhood by improving pedestrian safety of crosswalks, sidewalks, bike lanes and storm drainage at the Kingman Street and Florence Street/Malpais Lane intersections with Clay Avenue.

Project Update:

- Capital Improvements is assisting Comprehensive Planning.
- Consultant is working on the 90% plans and specifications.



Conceptual Plan of Proposed Improvements

Beulah Boulevard Extension/University Drive Realignment (DESIGN PHASE)

FUND: TRANSPORTATION TAX (STREETS)

Description – This project extends the northern terminus of Beulah Boulevard to connect with University Drive. Furthermore, University Avenue (west of Milton) will be realigned to match up with University Drive (east of Milton). A new roundabout will be constructed where Beulah Boulevard and University Drive will intersect.

Project Update:

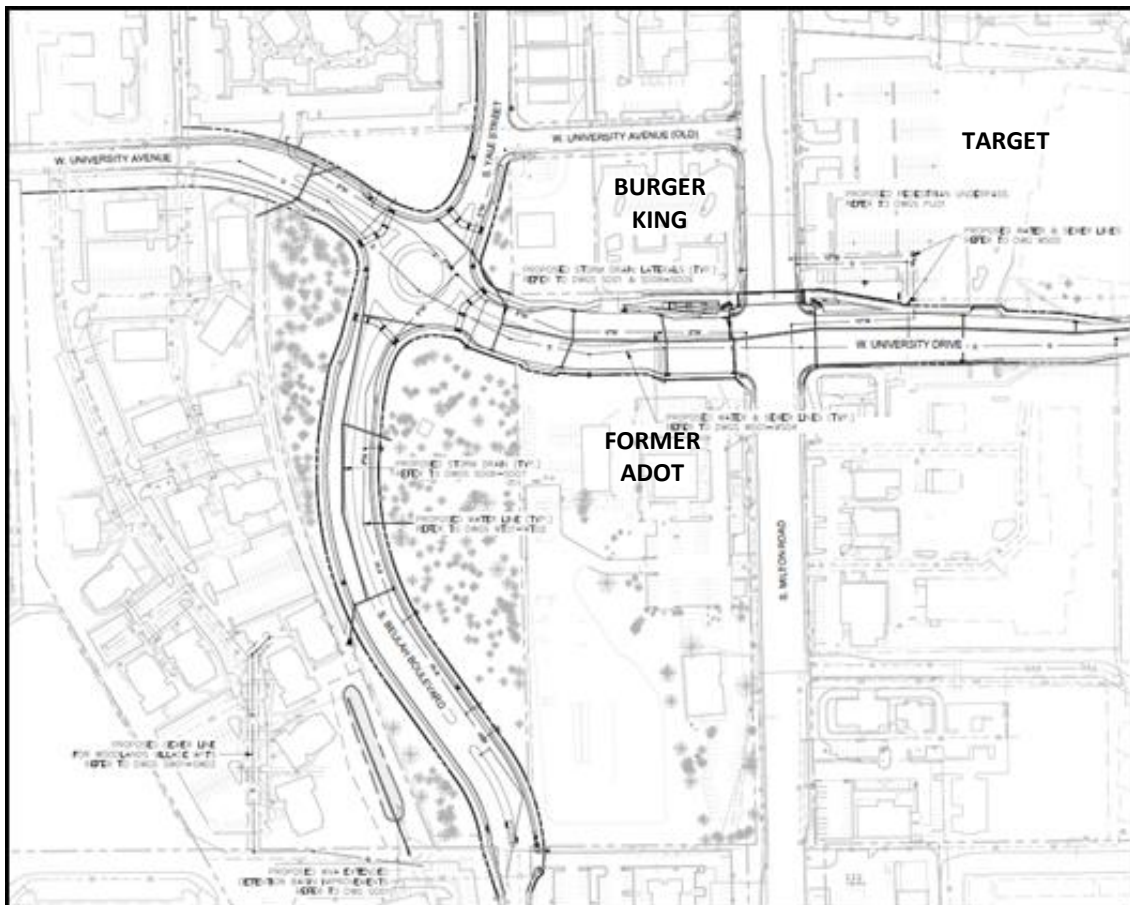
- City, in concert with Vintage Partners, are in final design of the roadway project. The engineering firm completing the design work is Shephard Wesnitzer, Inc. (SWI).
- Final design work should be completed by fall 2021.
- All abatement and demolition are complete on the former Fresquez and former ADOT properties.



*Former ADOT buildings have been demolished and removed.
Photo taken looking west from Milton Rd. and University Dr. intersection.*



*Former Fresquez buildings have been demolished and removed.
Pictured above is where the former residence was located.*



Extent map of new Beulah and University Realignment – taken from 30% plans.

Quiet Zone Modifications (Elimination of Wayside Horns) (PLANNING PHASE)

FUND: TRANSPORTATION TAX (STREET OPERATIONS)

Description – The City Council considered a citizen petition in July 2017 regarding the Quiet Zone and the sound level of the wayside horns on the eastside of town at the Steves and Fanning crossings. The wayside horns are operated by the City at both crossings and are an approved supplemental safety measure used in the absence of the train mounted horn. The other 3 crossings in Flagstaff that are a part of the Quiet Zone utilize One Way streets (Beaver and San Francisco) and a non-traversable median (Ponderosa Parkway) to satisfy the supplemental safety measure requirement for the Federal Railroad Administration’s requirements for Quiet Zones and therefore do not require wayside horns.

Project Update:

- In response to the petition we measured the sound levels and the aiming of the wayside horns. After the wayside horns were confirmed to follow all regulatory standards, the City moved on to pursue other supplemental safety measures to eliminate the wayside horns. Efforts by City staff are ongoing in working towards solutions in collaboration with BNSF, Arizona Corporation Commission-Railroad Safety Group, ADOT, and various roadway consultants.
- Staff prepared a CCR dated 11/20/2020 to update Council on the detail of these supplemental safety measures and what we hope to accomplish on the eastside of town.



Fanning Railroad Crossing

Sheep Crossing FUTS Trail (CONSTRUCTION PHASE)

FUND: TRANSPORTATION TAX (FUTS)

Description – The Sheep Crossing FUTS Trail connects the Ponderosa FUTS Trail on the east end, just south of the Ponderosa Trails Subdivision, and the Sinclair Wash FUTS Trail on the west end. The western portion of the trail is in Fort Tuthill County Park and intersects the County’s Soldiers Trail. Furthermore, this 0.74-mile trail is a connecting portion of the greater 44-mile Flagstaff Loop Trail. This trail utilizes two existing concrete box culverts for passage under Highway 89A and Interstate 17.

Project Update:

- Kinney Construction Services (KCS) received final acceptance on 18 December which established the beginning of the two-year warranty period.



*Looking west at the eastern portal.
Note Interstate 17 above the tunnel and the drainage tunnel to the right of the FUTS tunnel.*



Eight-foot bench facing Interstate Tank on the USFS portion of the trail.



Looking west through the tunnel. Note the interior lighting and heated weep drain frost protection conduit.



Looking west out the western portal. Note the FUTS safety fence at right and trench drain at left.

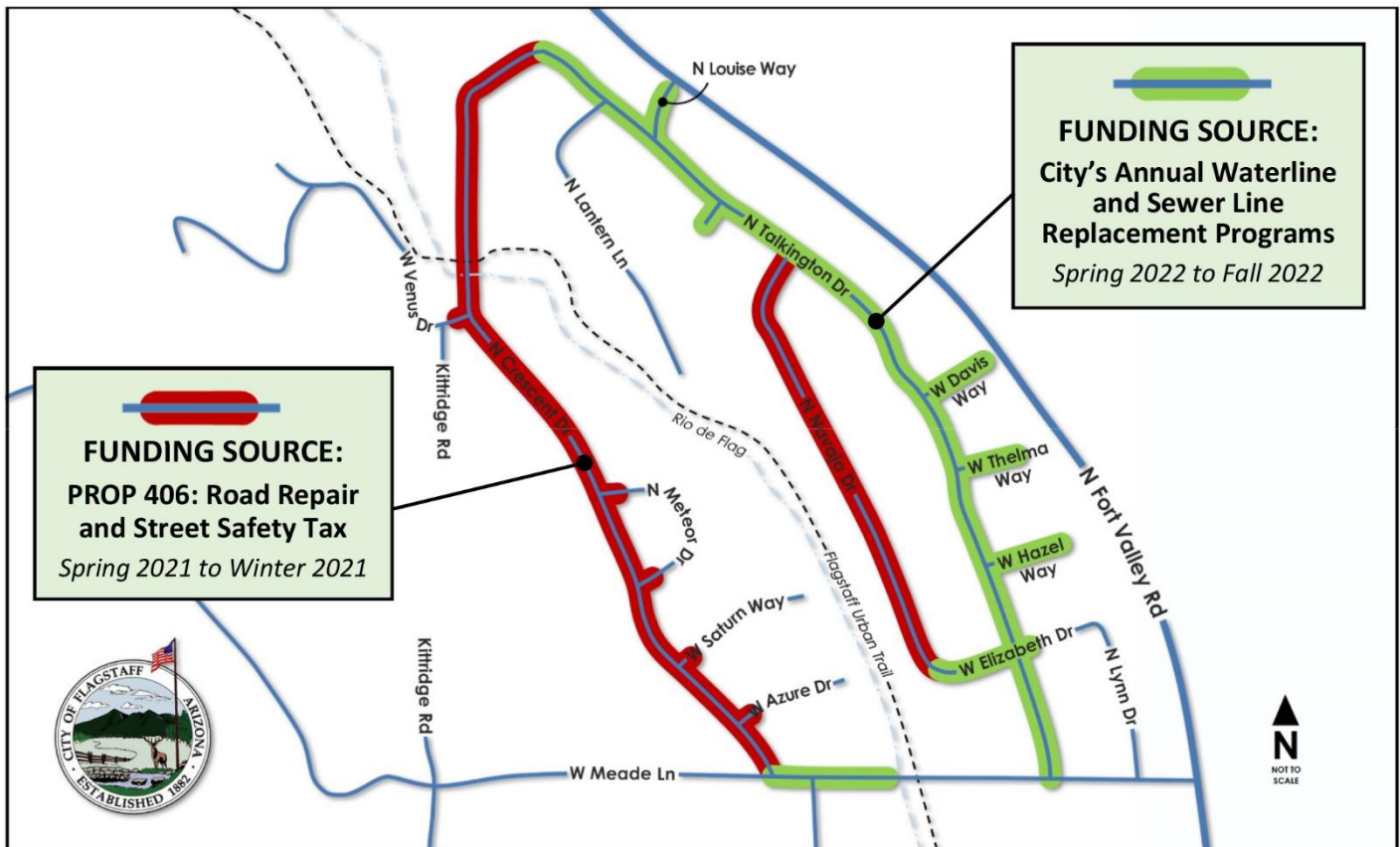
Coconino Estates Improvements Phase II (DESIGN PHASE)

FUND: ROAD REPAIR & STREET SAFETY & ANNUAL WATERLINE AND SEWER LINE REPLACEMENT PROGRAMS

Description - This is a utility and roadway improvements project located on several streets in the Coconino Estates neighborhood as seen in the map below. Improvements on the streets generally consist of replacing all existing utility and roadway infrastructure. The utility improvements include replacing the existing water and sewer mains, water and sewer services, fire hydrants, and manholes. The roadway improvements include replacing the existing asphalt roadway, replacing rolled curb with vertical curb, constructing driveway ramps at driveway entrances, and replacing select sidewalk only where it currently exists on Crescent Drive. Sidewalk will NOT be installed where it does not currently exist. For additional information visit the Project website at www.coconinoestates.com

Project Update:

- A Project Presentation Video was posted to the Project website in lieu of conducting the typical community open house meeting (www.coconinoestates.com).
- Final II (100%) Plans are currently being reviewed by City Staff.
- The Project will be advertised in January 2021 with construction to start spring 2021.
- The City will not permit the successful contractor to utilize the same construction yard as is being used for the Coconino Estates Phase I project near Thorpe Park.



Coconino Estates Improvements Phase II Project Limits – Funding - Schedule Map

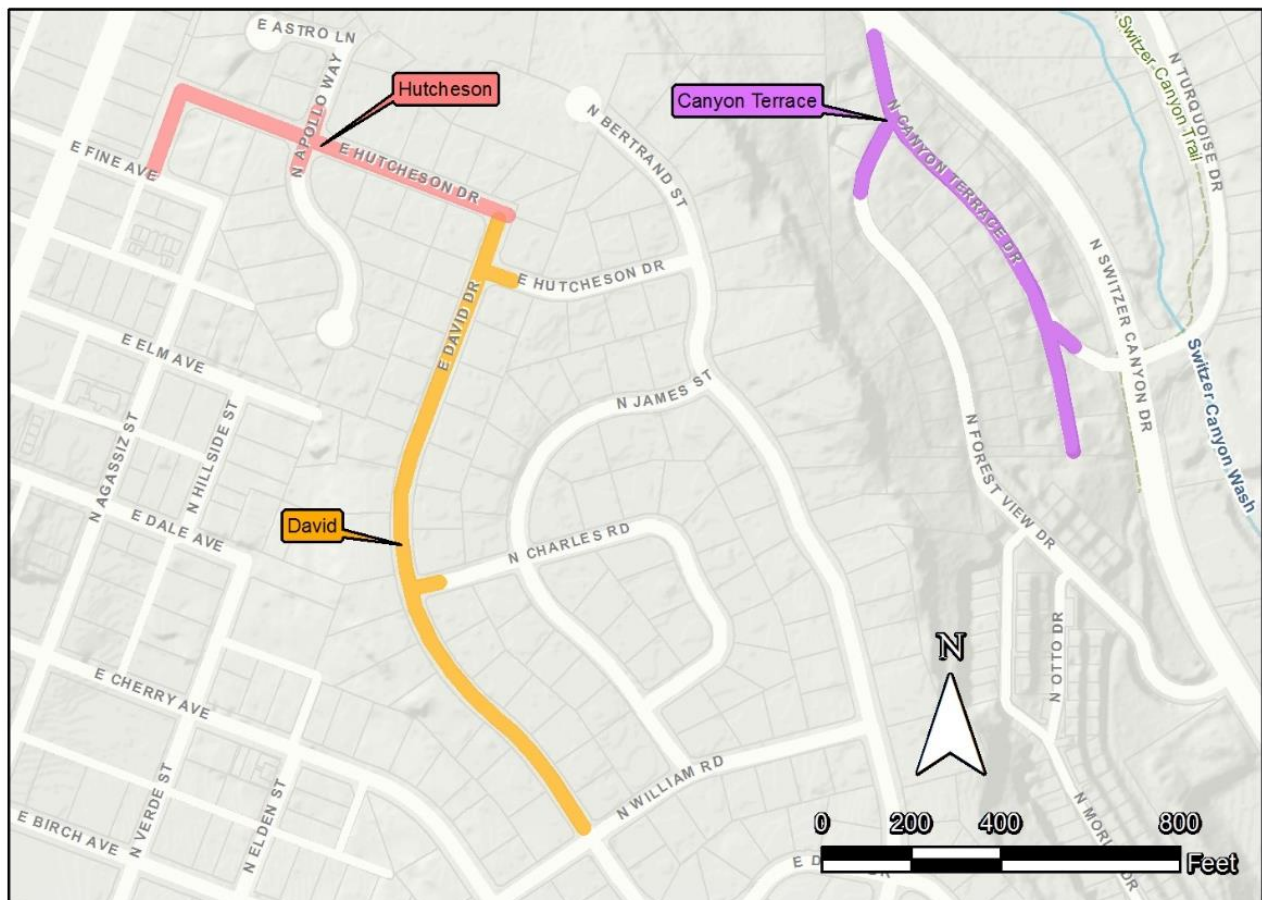
West Flag Improvements - David & Hutcheson (DESIGN PHASE)

FUND: ROAD REPAIR & STREET SAFETY

Description - This is a utility and roadway improvements project located on David Drive and Hutcheson Drive as seen in the map below. The Project originally included Canyon Terrace and was bid as one project in the spring on 2020, but was pulled at the end of the bidding process given the economic and funding source uncertainties due to the COVID 19 Pandemic. It was later decided to split the Project into two separate projects consisting of 1. David/Hutcheson and 2. Canyon Terrace (below). Improvements on the streets generally consist of replacing all existing utility and roadway infrastructure. The utility improvements include replacing the existing water and sewer mains (except for on David Drive), water and sewer services, fire hydrants, and manholes. The roadway improvements include replacing the existing asphalt roadway, replacing rolled curb with vertical curb on David Drive, and replacing select edge improvements (sidewalk, curb and gutter, etc.).

Project Update:

- The project is currently being advertised for bids through January 22, 2021.
- March 2, 2021 is the targeted City Council Meeting for the consideration of award for the Project.



West Flag Improvements - David & Hutcheson Project Limits Map

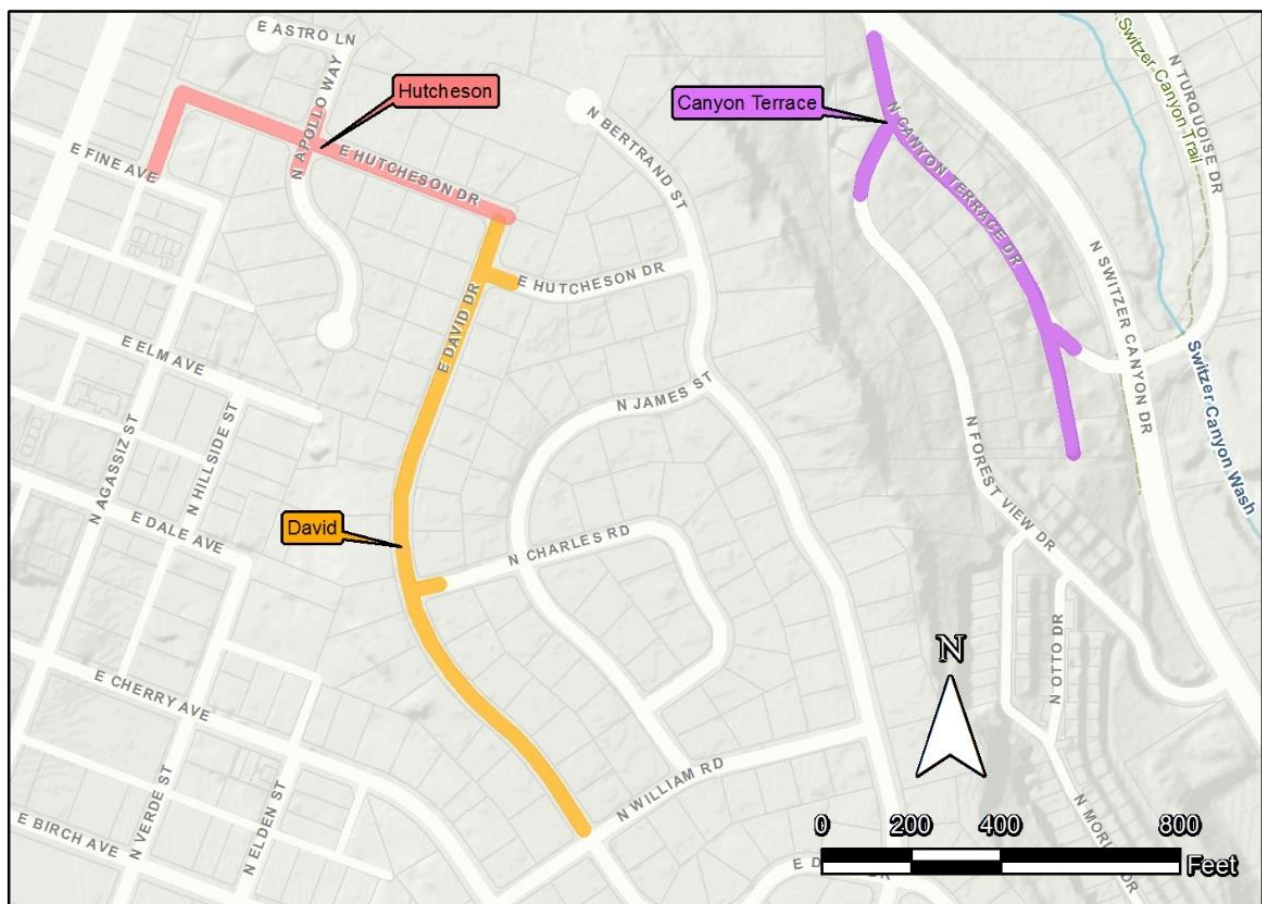
West Flag Improvements - Canyon Terrace (DESIGN PHASE)

FUND: ROAD REPAIR & STREET SAFETY

Description - This is a utility and roadway improvements project located Canyon Terrace Drive as seen in the map below. The Project originally included David/Hutcheson and was bid as one project in the spring on 2020, but was pulled at the end of the bidding process given the economic and funding source uncertainties due to the COVID 19 Pandemic. It was decided to split the Project into two separate projects consisting of 1. David/Hutcheson and 2. Canyon Terrace. Improvements on the streets generally consist of replacing all existing utility and roadway infrastructure. The utility improvements include replacing the existing water and sewer mains, water and sewer services, fire hydrants, and manholes. The roadway improvements include replacing the existing asphalt roadway and select curb and gutter.

Project Update:

- The project is currently being advertised for bids through January 22, 2021.
- March 2, 2021 is the targeted City Council Meeting for the consideration of award for the Project.



West Flag Improvements - Canyon Terrace Project Limits Map

Coconino Estates Improvements Phase I (CONSTRUCTION PHASE)

FUND: ROAD REPAIR & STREET SAFETY

Description - This is a utility and roadway improvements project located in the Coconino Estates neighborhood on Beal Road from Rockridge to Fort Valley, Navajo Drive from Navajo Road to Murray, Whipple Road from Navajo Drive to McMillan, and Navajo Road from Navajo Drive to Fort Valley. Improvements on the streets generally consist of replacing existing infrastructure with new, including water and sewer mains, water and sewer services, fire hydrants, storm drains, streetlights, the entire asphalt roadway, and defective select edge improvements (curb & gutter, sidewalk, etc.), except for Whipple Road which will only receive a new water main. There will also be new infrastructure added consisting of underground electric lines for street lighting and sidewalk on both sides of the street where it does not currently exist on Beal Road, Navajo Drive south of Beal, and on Navajo Road. For additional information visit the Project website at www.coconinoestates.com

Project Update :

Navajo Road (Construction Zone #1)

- Majority of improvements are complete.
- Installation of streetlights, one driveway with heated driveway issues, final striping, and landscape restorations remain.
- Navajo Road is now open to all traffic; however, temporary shoulder closures will occur as miscellaneous clean-up operations and streetlight installation continues.

Navajo Drive (Construction Zone #2)

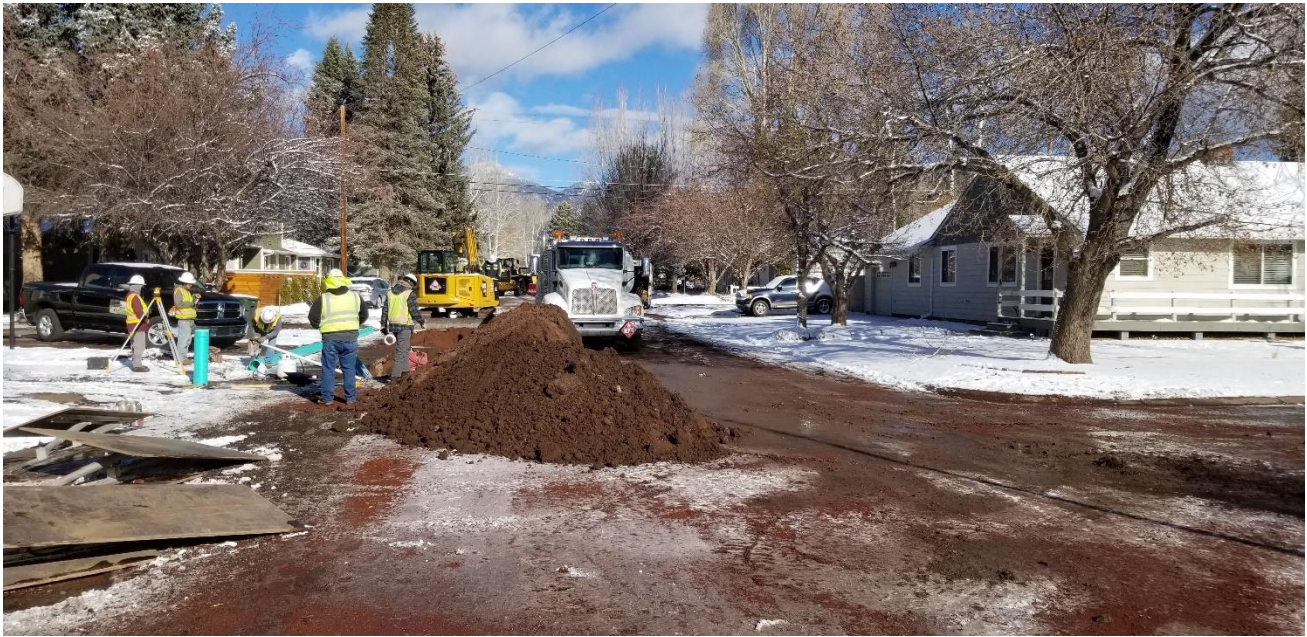
- Water and sewer main, water and sewer service, and electric conduit installation continues.
- Navajo Drive from Hopi Drive to Beal Road is closed to thru traffic, with detours posted around the closure.

Beal Road (Construction Zone #3)

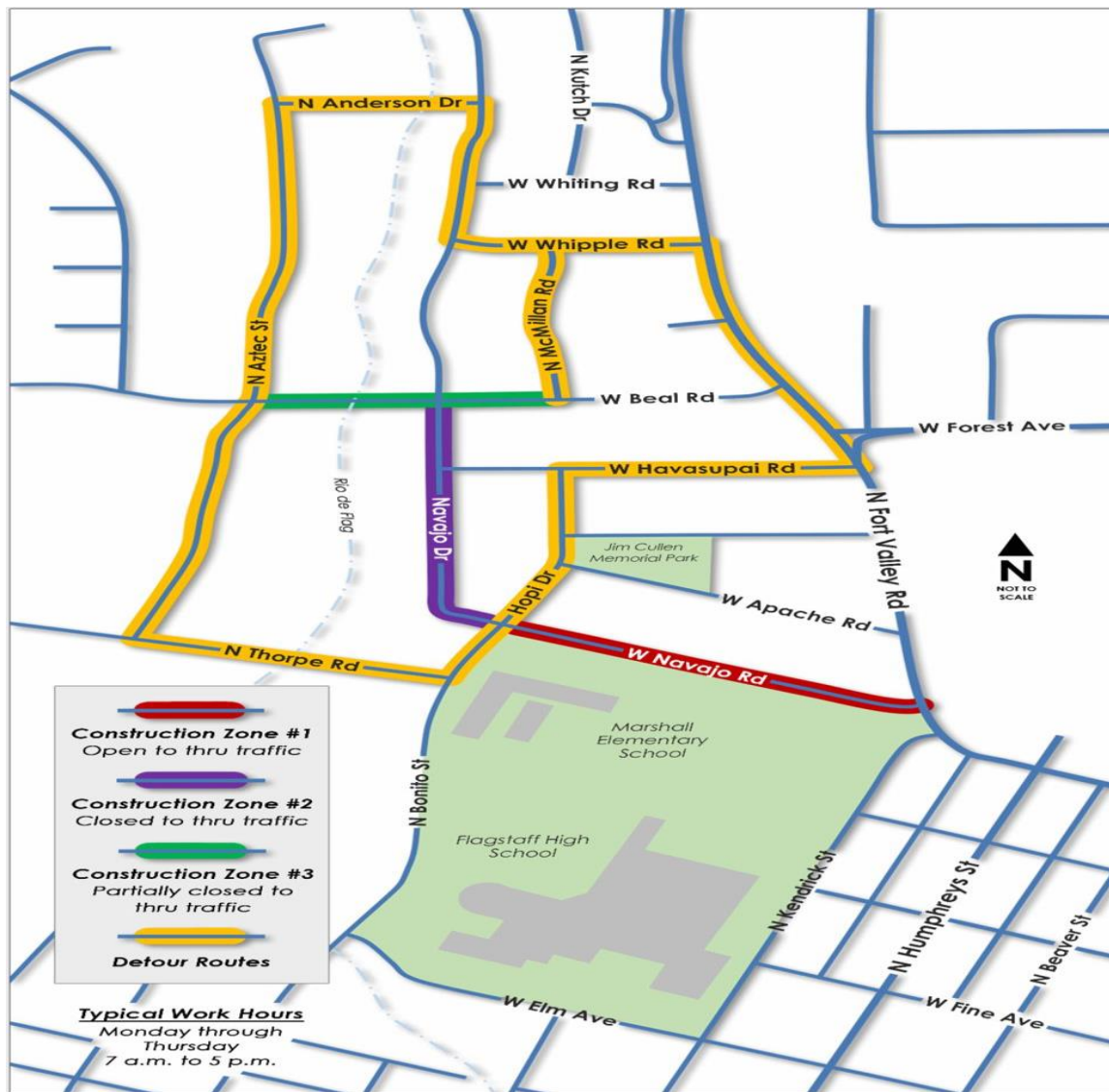
- Water and sewer main construction continues in the Beal/Navajo Drive intersection.
- Beal Road is closed to thru traffic from Aztec to McMillian, with detours posted around the closure.

Spruce Trees at 510 W. Beal Road

- The City hired a Professional Arborist to investigate the possibility of saving the trees, and in his professional opinion the east tree must be removed, however the west tree may be saved by narrowing the new sidewalk to a 3-foot width adjacent to the tree but there is still no guarantee that the tree will not need to be removed.
- A Citizen Petition to save the spruce trees in front of the 510 Beal Road property will be submitted to Council at the January 19, 2021 City Council Meeting to determine if the item will be placed on a future Council agenda for additional action.



Navajo Dr. / Havasupai Rd. intersection looking north at the sewer line construction on Navajo Dr.



Current road closures and detours

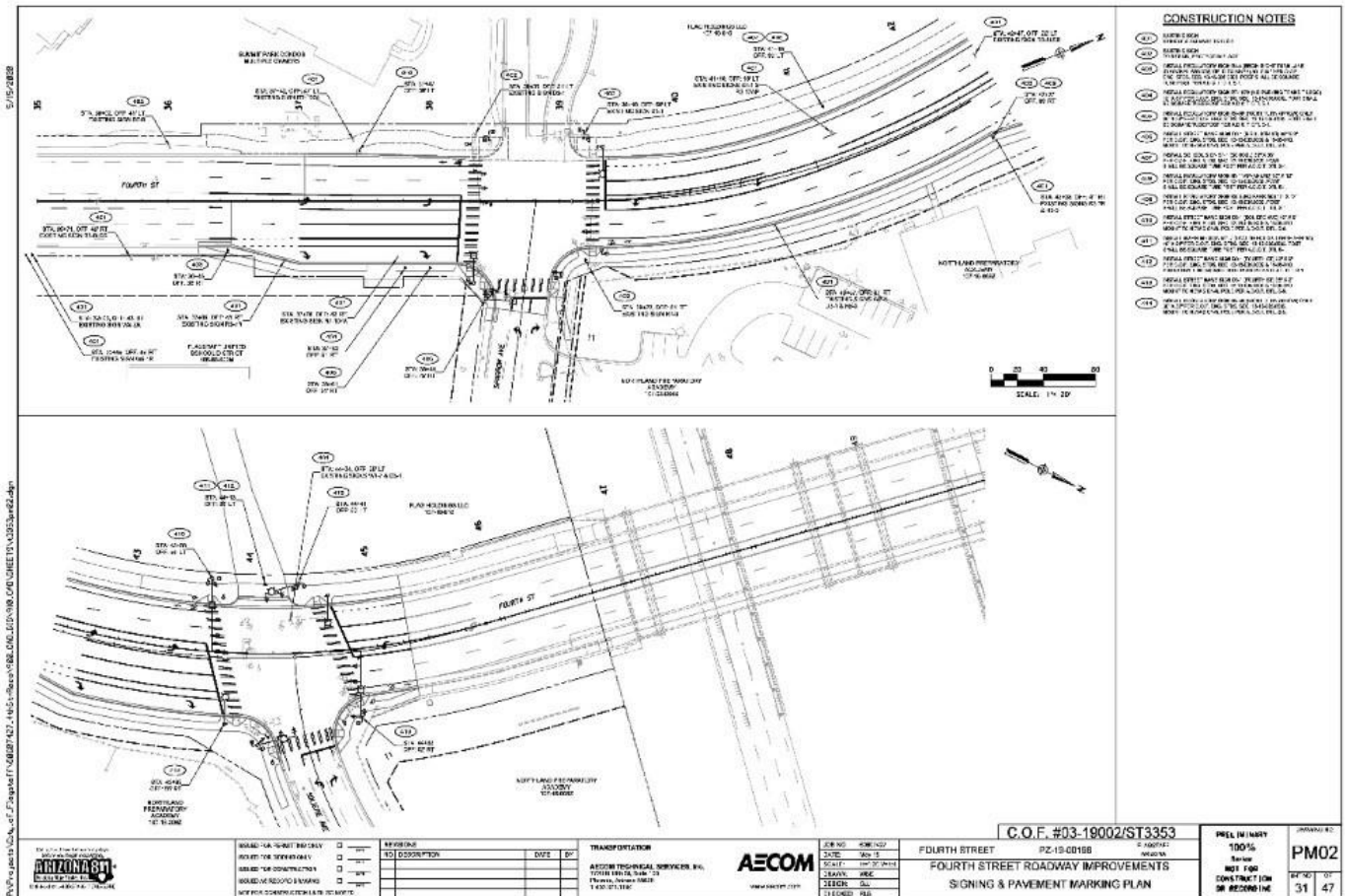
Fourth Street Reconstruction (CONSTRUCTION PHASE)

FUND: TRANSPORTATION TAX (RENEWED TAX)

Description – The project is on Fourth Street from the Soliere Avenue intersection, southerly to just past the Sparrow Avenue intersection. The work will construct a new pavement section with two northbound and two southbound lanes and a center turn lane, northbound dedicated right-turn lanes from Fourth Street onto Sparrow Avenue and onto Soliere Avenue, new streetlights, new traffic signals at Soliere Avenue, new fire hydrants, new 12" water main and new 8" water main, curb and gutter and new sidewalk. The reconstruction work will connect with the recently completed I-40 bridge replacement project.

Project Update:

- Project was awarded to RTR Paving at the December 8th Special City Council Meeting.
- RTR Paving was the low bidder, with a low bid of \$1,699,908
- Project construction is anticipated to start the week of January 11th.



Fourth Street Reconstruction Overview Plan

Lockett/Fourth Roundabout (DESIGN PHASE)

FUND: HSIP GRANT

Description – Project consists of the design and construction of a new roundabout at the Lockett-Cedar-Fourth Street intersection. Project is funded by an HSIP Grant, with supplementary funding from City of Flagstaff. Project design and construction to be administered by ADOT. The new roundabout will improve safety for vehicles, pedestrians and bicyclists in this busy intersection.

Project Update:

- Project design and construction to be administered by ADOT.
- Design efforts have kicked off with AZTEC as the design lead.
- Design completion is targeted for late 2021 and construction is anticipated in 2022.
- Early concepts to be presented to Bike and Pedestrian Advisory Committees on January 14th.
- Early concepts to be presented to the Transportation Commission on February 3rd.
- Discussion with Council is scheduled for the Feb 16th City Council Meeting .



Existing Lockett-Cedar-Fourth Intersection

Lone Tree Overpass Project (Design Phase)

FUND: TRANSPORTATION

Description - The Lone Tree Overpass Project will provide a grade-separated crossing over the future Rio de Flag drainage and the BNSF Railway corridor from Butler Avenue to Route 66. Funding for this project is provided through voter approved bonds as designated in the 2018 Proposition 420.

Project Update:

- The City is negotiating scope and fee for the first design-phase contract with the selected Design-Build team.
- A design-phase contract is anticipated to be presented to Council for approval on February 2, 2021.



Lone Tree Overpass Concept Design

Library Entrance (DESIGN PHASE)

FUND: BBB - BEAUTIFICATION

Description – Project to bring Library Entrance into ADA compliance with new handicap ramp and new overall vision for the entrance. Public art will be incorporated into project and an artist is being brought onto the design team. Project includes upgrades to landscaping, handicap parking, parking lot, and hardscape.

Project Update:

- Artist contract was awarded at Dec. 1 City Council Meeting.
- WLB Group is working on conceptual plans for the entrance.
- Project Team continues to work on incorporating feedback from the *Commission on Inclusion and Adaptive Living* and other stakeholders.



Library Entrance Project-Existing Conditions

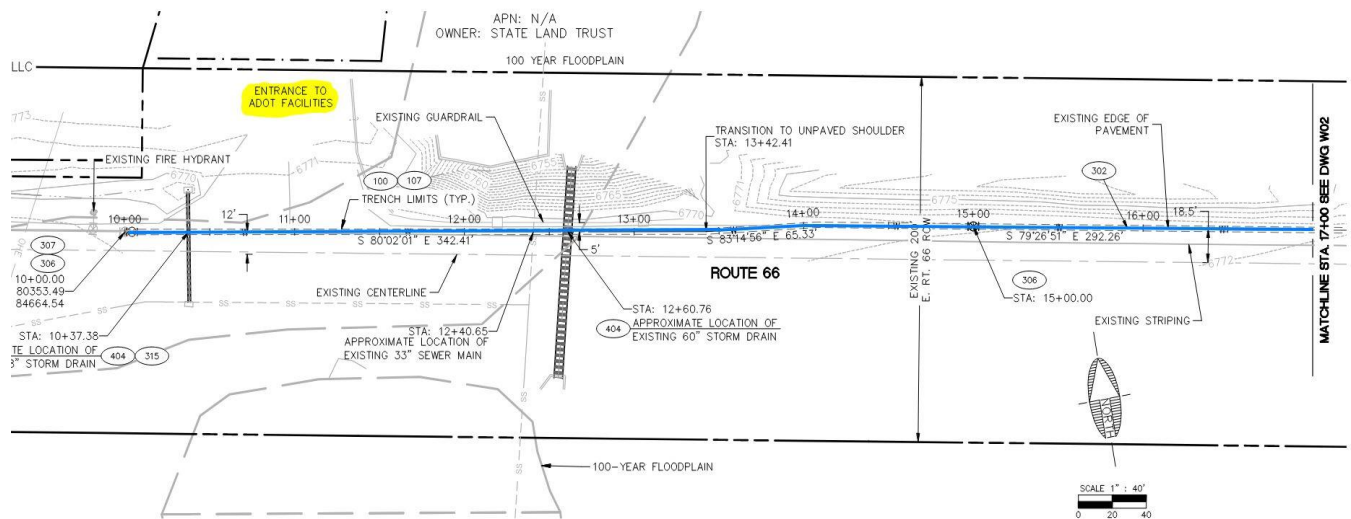
East Route 66 and El Paso Flagstaff Waterline Extension (DESIGN PHASE)

FUND: AGING INFRASTRUCTURE

Description – A utility improvements project that extends the 12" ductile iron waterline approximately 2,450 linear feet from approximately the intersection of Test Dr. and Rt. 66 to the intersection of El Paso Flagstaff Rd. The waterline extension continues north, up El Paso Flagstaff Rd towards the Wildcat Treatment plant, with approximately 1,600 linear feet of new 8" ductile iron waterline. The project also calls for a repaving of El Paso Flagstaff Road for the extents of the waterline extension.

Project Update:

- A second civil plan submittal was submitted to the City for review on the week of 11/30.
- Capital Staff is working with the Real Estate Manager to secure easements on State land for the new waterline.
- Plans are being coordinated with the proposed Industrial Park to the east, a private development project, to allow them water access and to mitigate future pavement cuts into the new road.
- Tentative construction schedule is to construct the waterline extension along Rt. 66 and El Paso Flagstaff Road during spring of 2021 followed by the paving of El Paso Flagstaff Road in the summer of 2021.



Current civil plan set in review, the blue line represents the starting point of the waterline extension that begins just west of the ADOT facilities driveway and Route 66 intersection.

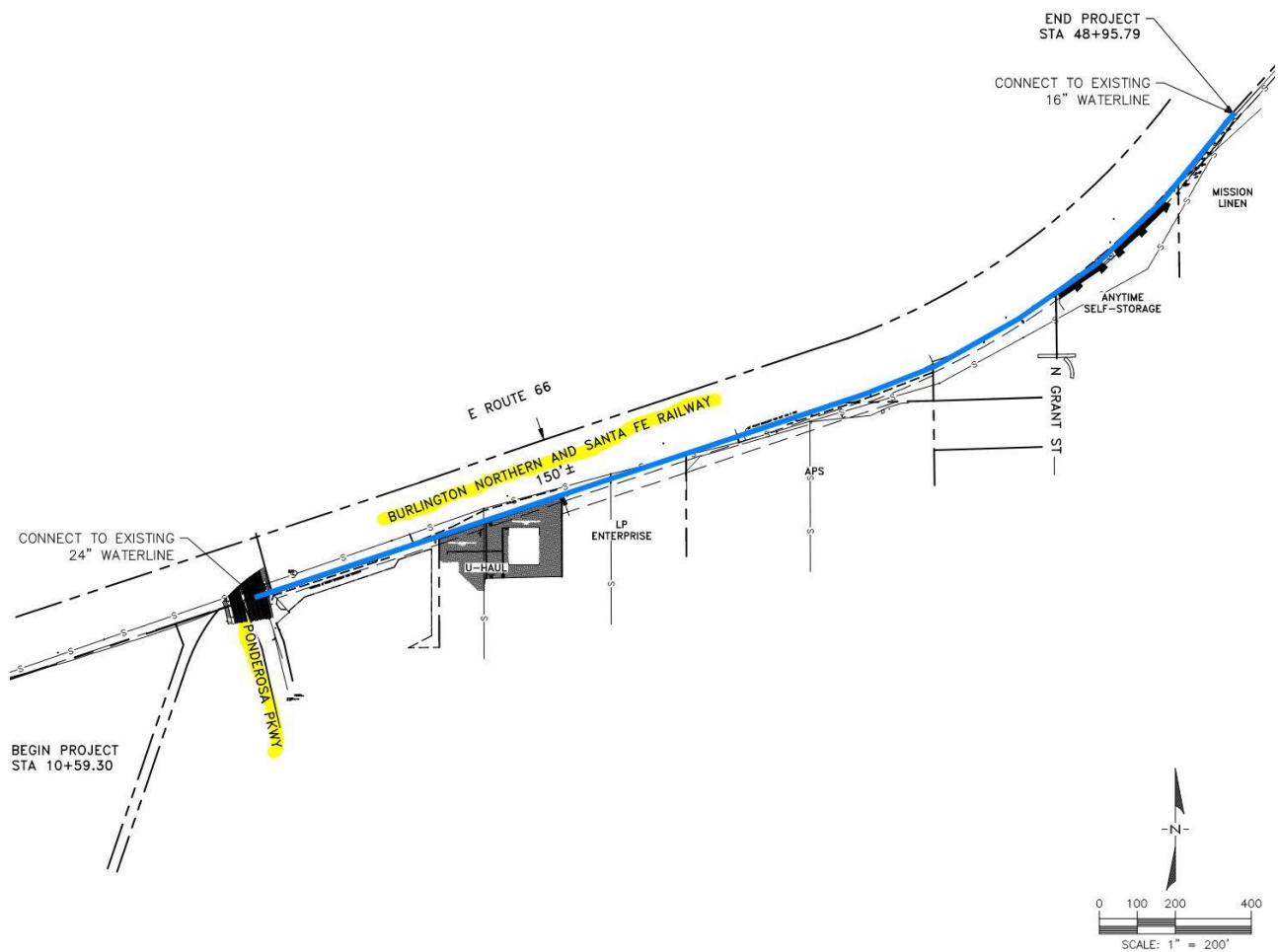
Huntington Waterline Replacement (CONSTRUCTION PHASE)

FUND: AGING INFRASTRUCTURE

Description - The Project consists of installing 3,000 LF of new 16" ductile iron waterline, and associated roadway improvements. Included in the project will be new water services, fire hydrants and air release valves. The existing waterline in this area is over 60 years old. This project is part of the City's ongoing aging water infrastructure replacement program.

Project Update:

- Plans have received approval from the City and ADEQ to construct.
- A bid package has been sent to our Purchasing Department for advertising.
- Current working schedule has a proposed start of construction in May of 2021.



Vicinity Map of improvements, the blue line represents the new 16" waterline

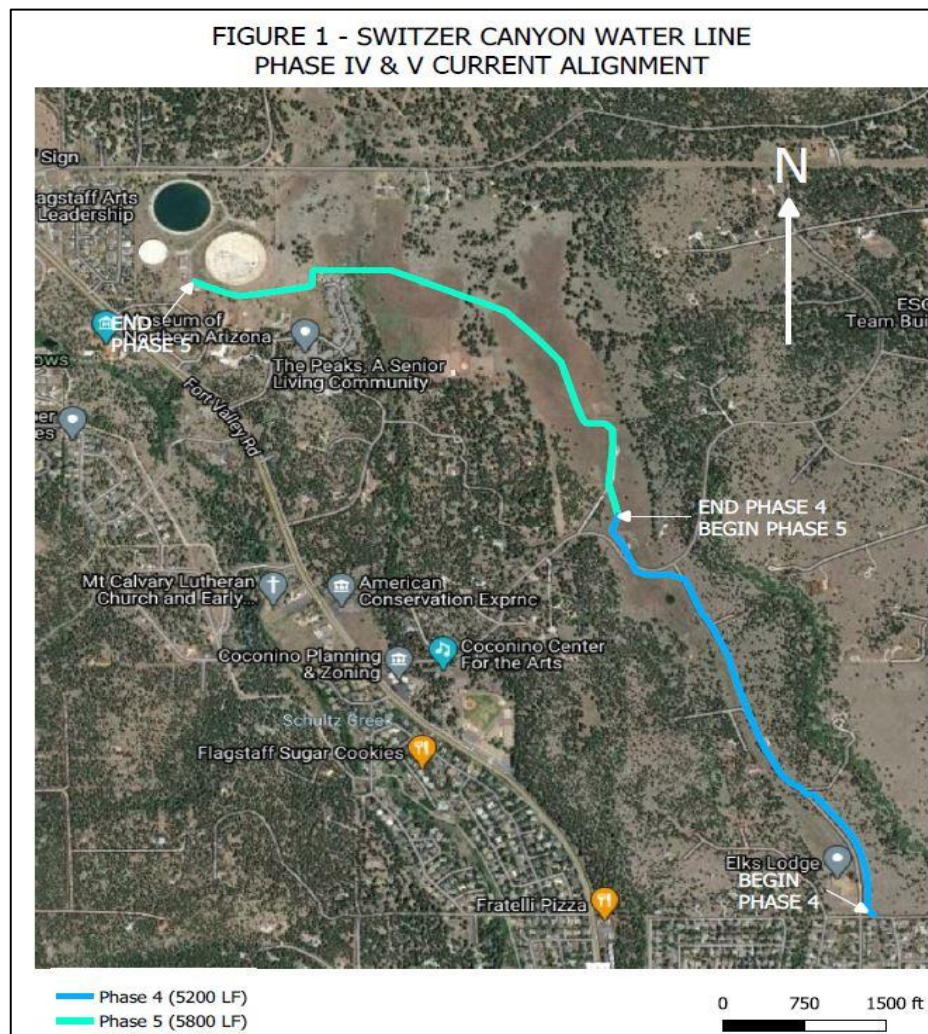
Switzer Canyon Transmission Main Phase IV & V (Design Phase)

FUND: AGING INFRASTRUCTURE

Description – The Project consist of installing two new transmission mains, 24” and 16”, that will complete the distribution system, zone A and B, from the Downtown area to the City Reservoirs near Cheshire. The length of Phase IV and V is approximately 11,000 feet. The project is within City limits and the urban distribution service area within the County. Included in the project will be the two water mains with appurtenances, new bundled water meter/service locations and fire hydrants. This project is critical to the mission of the City’s Water Services Division, and is easily one of the most important water capital project for the community, both today and well into the future.

Project Update:

- Property acquisition is underway with legal descriptions, environmental clearances and site assessments.
- Phase V is in the planning phase to define the final alignment.
- Construction of Phase IV is anticipated for 2021
- Construction of Phase V is anticipated for 2022
- 90% level plans were submitted by Turner Engineering for City review of Phase IV
- Staff anticipates presenting the out of City water services request to the City Council on February 16th for final approval.



Industrial Waterline Replacement (CONSTRUCTION PHASE)

FUND: AGING INFRASTRUCTURE

Description - A utility improvements project on E. Industrial Drive from approximately Steves Boulevard to N. Caden Court. The improvements consist of replacing approximately 2,050 feet of 16" ductile iron waterline, associated paving for the waterline trench, removal and replacement of curb, gutter and valley gutter. The existing waterline in this area is over 60 years old. This project is part of the City's ongoing aging water infrastructure replacement program.

Project Update:

- All physical improvements for the project have been completed.
- Capital Staff is currently reviewing as-builts and working through project closeout before sending a letter of final acceptance to the Contractor.



Industrial Drive ready for striping and valve adjustments, Industrial Dr. looking east

Summit Waterline Replacement (CONSTRUCTION PHASE)

FUND: AGING INFRASTRUCTURE

Description - Approximately 3,300 ft of new waterline, water services, fire hydrants, and pavement reconstruction. The City intends to replace the water infrastructure and pavement on: S. Walnut Street from Santa Fe Avenue to Coconino Avenue; S. Sycamore Street from Santa Fe Avenue to Grand Canyon Avenue; S. Spring Street from Montvale Avenue to Grand Canyon Avenue; W. Summit Avenue from Santa Fe Avenue to end; and W. Santa Fe Avenue from Walnut Street to Thorpe Road. Waterline only will be installed on W. Montvale Avenue from Santa Fe Avenue, to end. The existing waterlines in this area range from 58 to more than 90 years old. This project is part of the City's ongoing aging water infrastructure replacement program.

Project Update:

- All underground work is complete.
- Walnut St and the majority of Sycamore St have been paved with final pavement.
- Remaining final pavement to be installed in spring 2021.
- Project is in a winter shutdown.



Summit Water Project-Trenches patched for winter

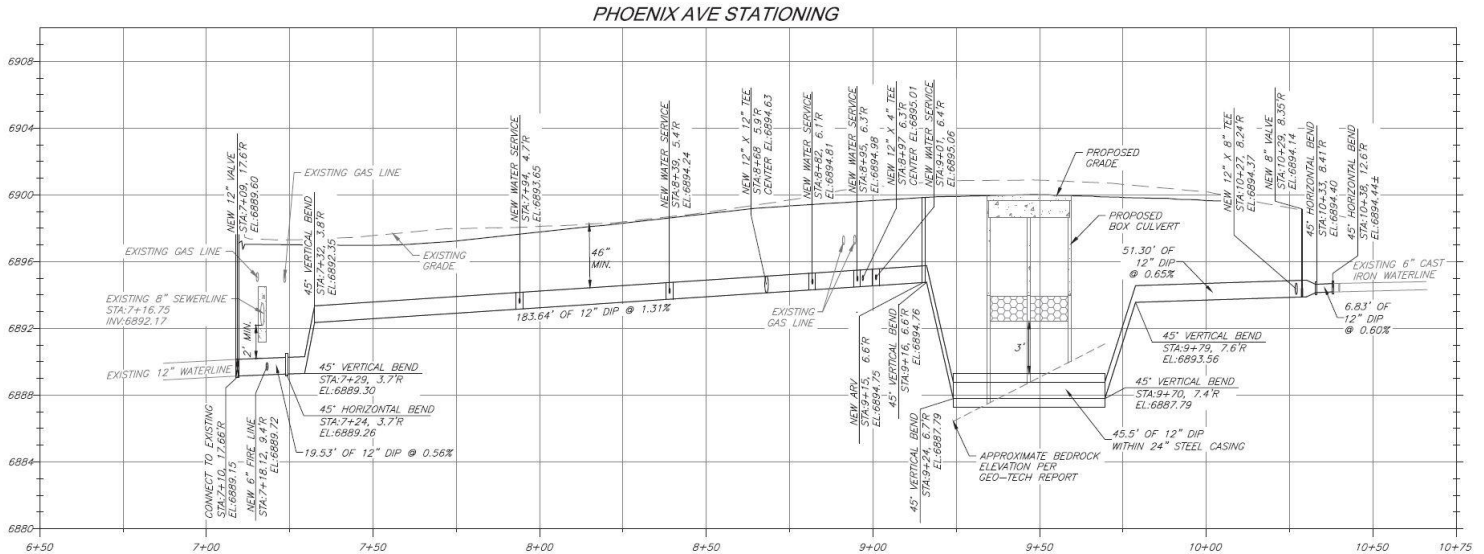
Phoenix Avenue Bridge and Waterline Replacement (DESIGN PHASE)

FUND: STORMWATER & AGING INFRASTRUCTURE

Description - The project will replace the Rio de Flag box culvert (which runs beneath Phoenix Avenue and the Zani building, and functions as the Phoenix Ave bridge) with the appropriate conveyance structure and will upsize the current waterline to a 12" waterline in Phoenix Avenue from Mikes Pike to Beaver Street. Phoenix Avenue will be reprofiled and lowered to achieve a standard street section, roadway surface drainage issues will be addressed, edge improvements will be made as needed and the roadway will be repaved. The existing waterline in this area is over 114 years old. This project is part of the City's ongoing aging water infrastructure replacement program.

Project Update:

- The second set of civil and structural plans were submitted to the City for review on January 4th
- A meeting was held in late September with City Staff and the consulting Structural Engineer to discuss plans for rehabilitating the beam under Zani.
- A meeting was held in Late September with City Staff and the consulting Design Engineer to discuss strategy on construction logistics to mitigate impacts to businesses in the area.
- Construction is targeted to begin in spring of 2021.



Proposed cross-section of Phoenix Avenue showing new 12" DIP waterline and box culvert

Rio de Flag Flood Control Project (DESIGN PHASE)

FUND: STORMWATER & AGING INFRASTRUCTURE

Description - Design consists of channel improvements along both the Rio de Flag and Clay Avenue Wash channels, and the construction of an underground concrete confluence structure. The channelization of Clay Avenue Wash channel will begin at an upstream inlet structure transitioning into an open rectangular concrete channel and then transitioning into an underground reinforced concrete box channel ending at the confluence on Clay Avenue Wash and Rio de Flag, total length is approximately 5,000 feet. The channelization of the Rio de Flag channel will begin at an upstream inlet structure transitioning into an underground reinforced concrete box channel with an open earthen channel above (composite channel) and then transitioning into the underground confluence structure. From the confluence structure, the Rio de Flag channel will be re-routed out of the Southside, along the BNSF railroad tracks, then transitioning into an open trapezoidal channel with riprap placed on invert and side slopes. Work includes widening and deepening by large scale excavation, grading, and compacted fill; disposal of excess excavated material; installing over 1 mile of underground reinforced concrete box channel, riprap slope protection, critical underground concrete confluence hydraulic structure, drainage culverts, many utility relocations, landscaping and mitigation planting, asphalt concrete paving, access ramps, safety railing and appurtenant work. Construction methods will include hard rock excavation during grading and utility excavation, groundwater dewatering, shoring, environmental cleanup and disposal and cut slope and trench stabilization.

Project Update :

100% Construction Plans

- The City's consultant (Shephard Wesnitzer, Inc.) and the US Army Corps consultant (Tetra Tech) continue to coordinate on project design items including the channel crossing on ADOT right-of-way at the Milton Road and Butler Avenue intersection, utility relocations, and design of the project on BNSF Railway property.
- Several public involvement items have been created and posted to the project website, including:
 - Photo simulations and video for the Flood Wall, Composite Channel, Open Channel (Clay Wash) and Open Channel (Lower Reach).
 - A virtual meeting room that has project exhibits and information.
 - A Southside Community Interview video.
 - The link and web address for the Rio de Flag Public Information page is <https://www.flagstaff.az.gov/4189/Rio-De-Flag-Flood-Control>.

Property acquisition status - Phase I

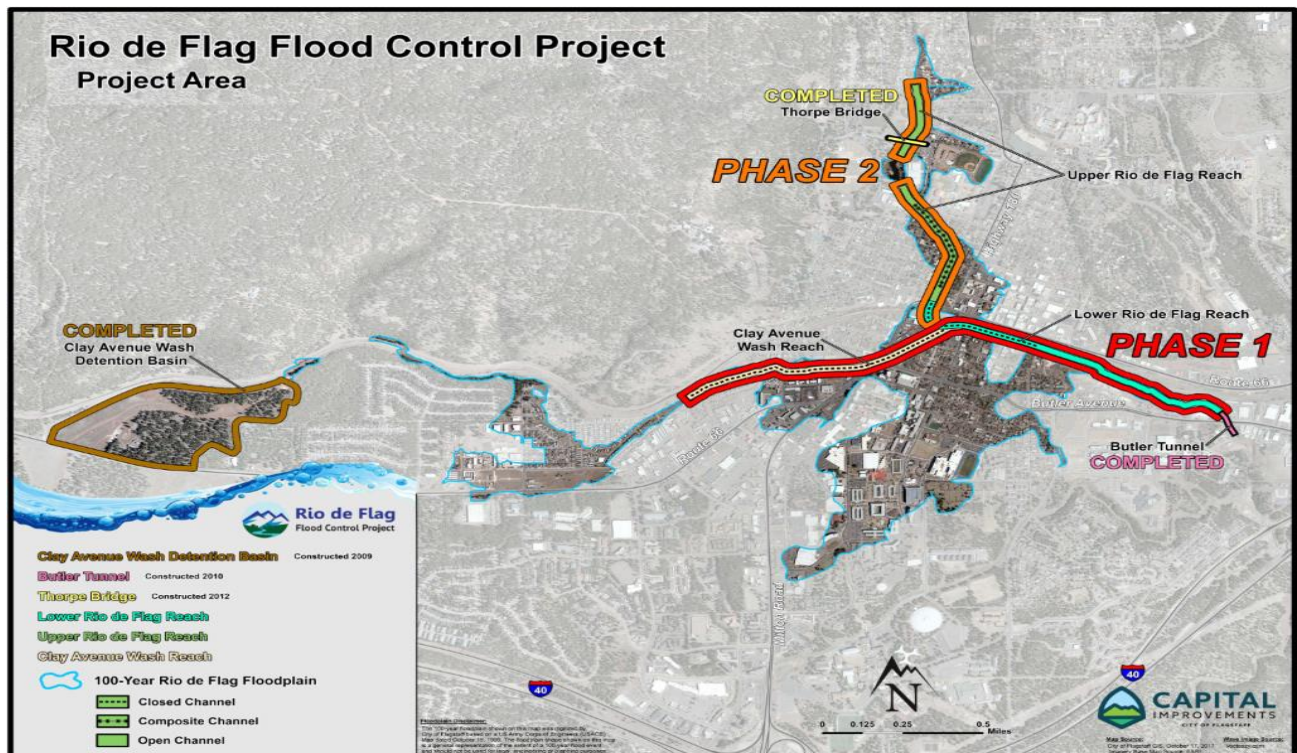
- The City's consultant (Shephard Wesnitzer, Inc.) and the US Army Corps consultant (Tetra Tech) continue to refine the project property acquisition exhibits in anticipation of property appraisals.

BNSF Railway

- On December 15, Former Mayor Evans, Councilmember Shimoni and City staff met with BNSF staff regarding mitigation measures and property needs for the project.
- On December 17, the City, the Army Corps, and BNSF met to review the property acquisition process.



Aspen Avenue in vicinity of City Hall & Library



Rio de Flag Project Location Map

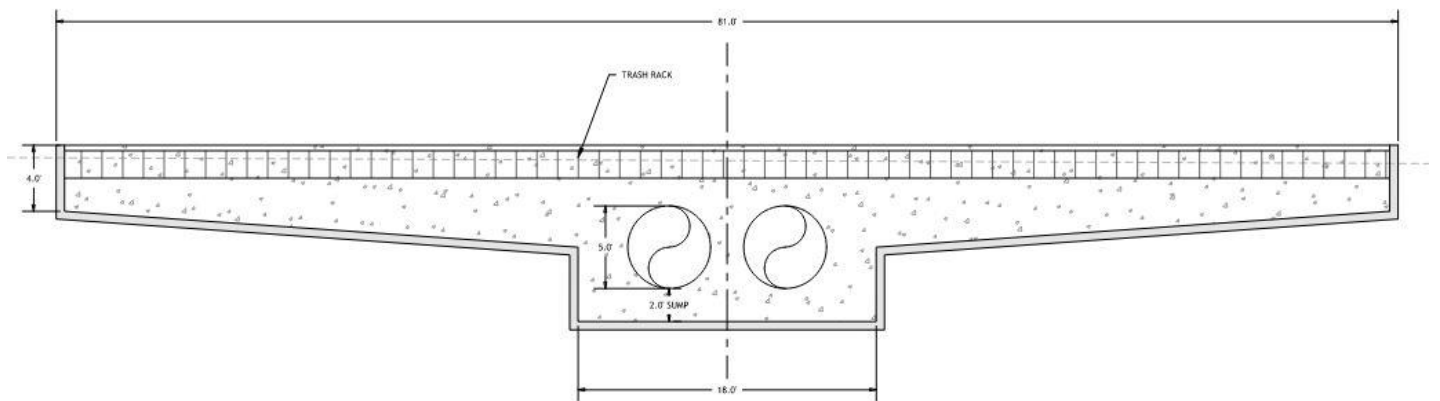
Steves Boulevard Wash at Soliere (DESIGN PHASE)

FUND: STORMWATER

Description – This is a stormwater improvements project to eliminate the low water crossing by the Steves Boulevard Wash at Soliere Avenue, and to provide a stormwater culvert conveyance from I-40 to the existing Summit Apartments' storm drain system.

Project Update:

- A 60% plan set is scheduled to be submitted to the City on 1/15 for review.
- A meeting with City Staff and Peak Engineering was held on 12/17 to discuss design options for the conveyance structures. The option for two 60" reinforced concrete pipes was selected due to a benefit in cost, constructability and conveyance capacity.



Soliere Avenue cross-section, stormwater conveyance structure selected option: Two 60" reinforced concrete pipes



Google Earth image of existing low water crossing across Soliere Ave. Current condition allows stormwater to discharge from the box culvert and across Soliere Ave. Planned improvements will convey stormwater underneath Soliere Ave.

Wildcat Hill Wastewater Treatment Plant (WHWWTP) Digester Complex (DESIGN PHASE)

FUND: WATER SERVICES-SEWER

Description – Project consists of a two-tank digester complex with a digester control building, piping to connect new/existing systems, boilers, heat exchangers, sludge recirculation system, and gas handling system. The purpose of this project is to significantly increase the Bio-solids handling capacity of the wastewater treatment plant.

Project Update :

- Capital Staff has compiled a RSOQ document for advertising that has been sent to our Purchasing Division.
- Delivery method will be a Design-Bid-Build.
- Design is targeted for 2021 and construction is anticipated for 2022-2023.



Existing Wildcat Plant, red circles represent the proposed location of the two new digesters

Route 66 ADOT Bridge Replacement Project (CONSTRUCTION PHASE)

FUND: ARIZONA DEPARTMENT OF TRANSPORTATION

Description – Project consists of removing the existing concrete bridge that crosses the Rio de Flag channel and replacing with a precast box girder bridge with precast abutments. Included with the project are roadway approach slabs on either side of the new bridge, channel improvements with bank protection and revegetation mitigation measures. The purpose is to provide a new Route 66 bridge crossing at the Rio de Flag to serve Route 66/Milton.

Project Update :

- The ADOT contractor, FNF Construction, is contracted to complete the work by October 2021.
- Traffic Control, lane closures and detours are in effect when construction is in progress.
- The contractor placed the concrete for the wingwall footing on the northeast side of the bridge, and the contractor placed concrete for the wingwall on the northwest side of the bridge.
- The contractor is working on the southside of Route 66, east and west, to begin the excavation of the wingwalls.
- ADOT continues to update City staff on construction matters and will release information to the public through media releases.
- During the week of December 7th, the contractor and ADOT implemented modifications to the traffic control plans to assist with excavation, trench protection and the delivery of materials.



Wingwall excavation at the northeast side of the new bridge



Trench shoring box preparation using a 90 ton crane