



**ENGINEERING & CAPITAL IMPROVEMENTS DIVISION**

**CAPITAL IMPROVEMENTS SECTION**

Monthly Capital Projects Report  
February 2021

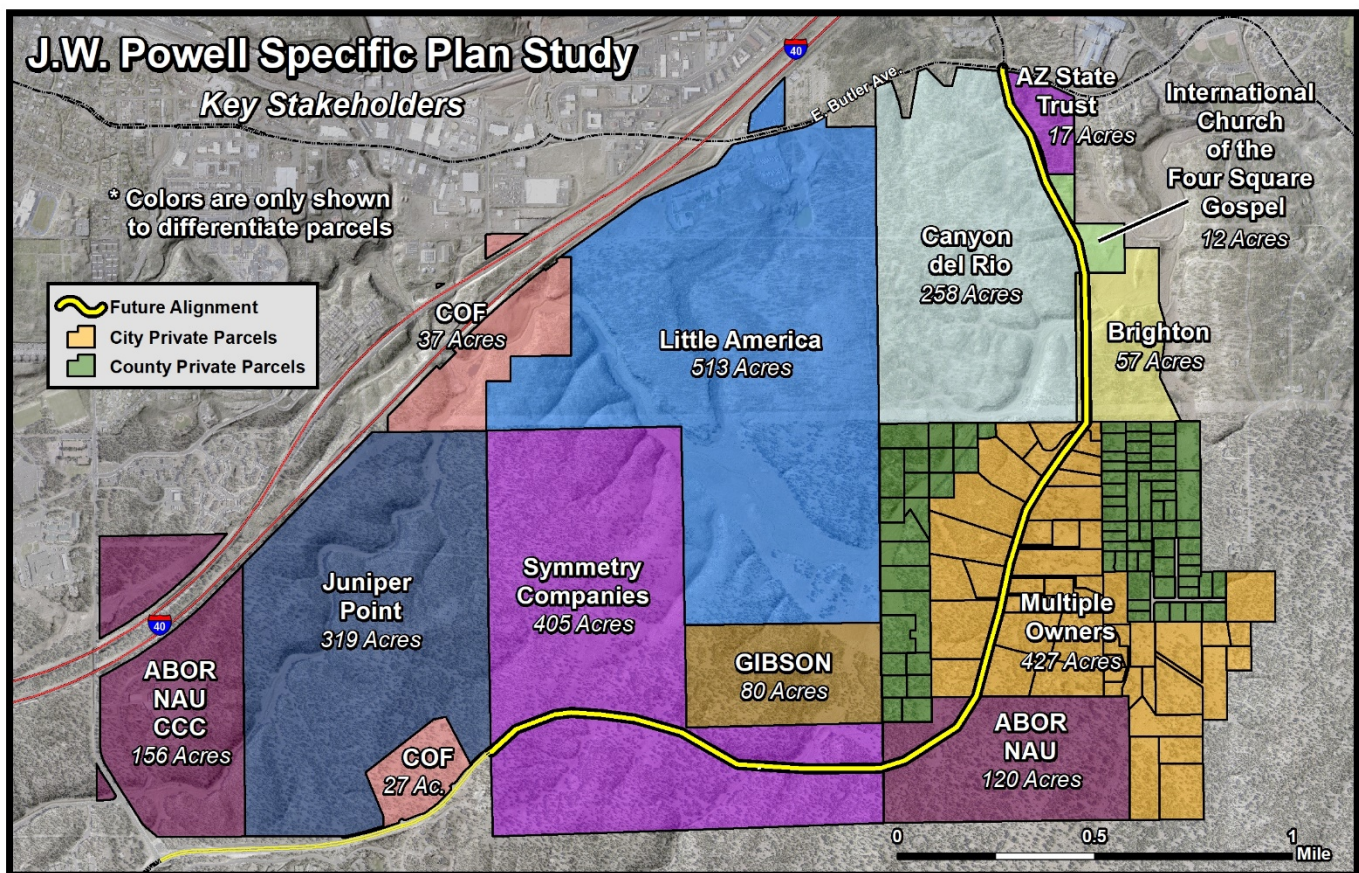
## J.W. Powell Specific Plan Study (PLANNING PHASE)

FUND: GENERAL GOVERNMENT & TRANSPORTATION TAX

**Description** – The purpose of the John Wesley Powell Specific Plan Study (Study) is to develop a specific plan to guide the future private development of public infrastructure, utilities, and facilities. Phase 1 of the project is the conceptual design of the future public infrastructure (roads), public utilities and facilities location analysis. The conceptual design is required to meet the full City infrastructure standards including street improvements, potable water, sanitary sewer mains, storm drain systems, street lighting and associated appurtenances. Phase 1 of the Study includes a sanitary sewer system master plan for the area. A water system master plan was previously developed for the area. Phase 2 of the Study is development of the planning elements necessary to gain City Council approval of a Specific Plan.

### Project Update:

- Virtual open house for small-parcel property owners ( $\leq \sim 10$  acres) occurred 28 January 2021. Recording and project resources are available at <https://www.flagstaff.az.gov/4511/JW-Powell-Specific-Plan>
- Virtual one-on-one follow up meetings with small-parcel property owners will run for two weeks; starting the second week of February.
- Late February will begin the virtual one-on-one meetings larger-parcel property owners.
- Phase 1 should conclude in summer 2021 with Phase 2 starting thereafter.



*Proposed alignment of new J.W. Powell Boulevard. and Fourth Street; denoted by yellow line*

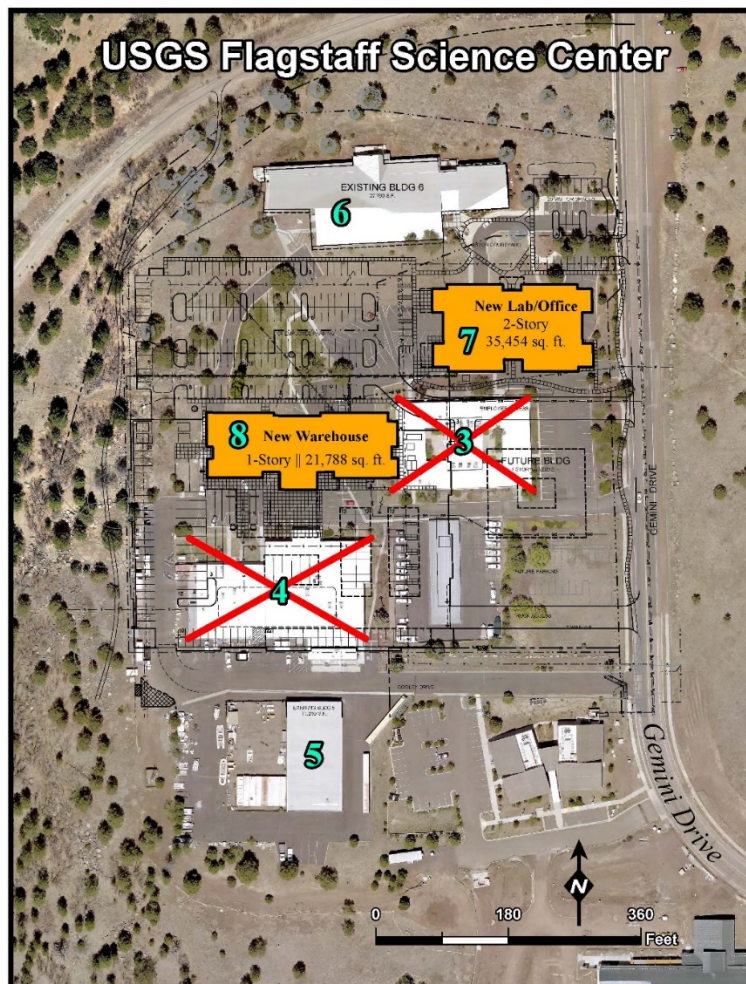
## USGS Flagstaff Science Center Campus - Build to Suit (DESIGN PHASE)

FUND: GENERAL GOVERNMENT

**Description** – This project will bring new improvements to the USGS Flagstaff Science Campus, located just south of Buffalo Park. There will be two existing buildings demolished (buildings 3 and 4), and two new buildings constructed (buildings 7 and 8). One of the new buildings will be a new lab and office facility while the second building will be a new warehouse. These two new buildings will require a minimum certification from the U.S. Green Building Council's Leadership in Energy and Environmental Design (USGBC) of "Green Building Rating System" of "LEEDTM Silver for New Construction (NC)."

### **Project Update:**

- City Staff is working on the Request for Statement of Qualifications (RSOQs) to procure a design-build contractor.



*USGS Flagstaff Science Center Campus.  
Buildings to be constructed are shown in orange.  
Buildings 3 and 4 (shown with red X) will be demolished.*

## **City of Flagstaff Municipal Court** (CONSTRUCTION PHASE)

FUND: GENERAL GOVERNMENT

**Description** – The City of Flagstaff Municipal Court Project is a 40,000 SF facility that will provide full user services to the City Court, the City Prosecutor’s Office, and the public. It is located two blocks north of the existing Court facility, at 101 W. Cherry. Amenities include: four court rooms, one hearing room, administrative staff offices for the Court and Prosecution, in-custody detention and processing, and customer service facilities

### **Project Update:**

- KCS continues to work to complete punch list items.
- Demolition of the old Court and Prosecutor’s buildings is contingent on franchise utility relocations. Project Staff is working closely with the utility companies to move this last phase of the project forward



*Flagstaff Municipal Court Facility, looking at the main entrance – northeast corner*



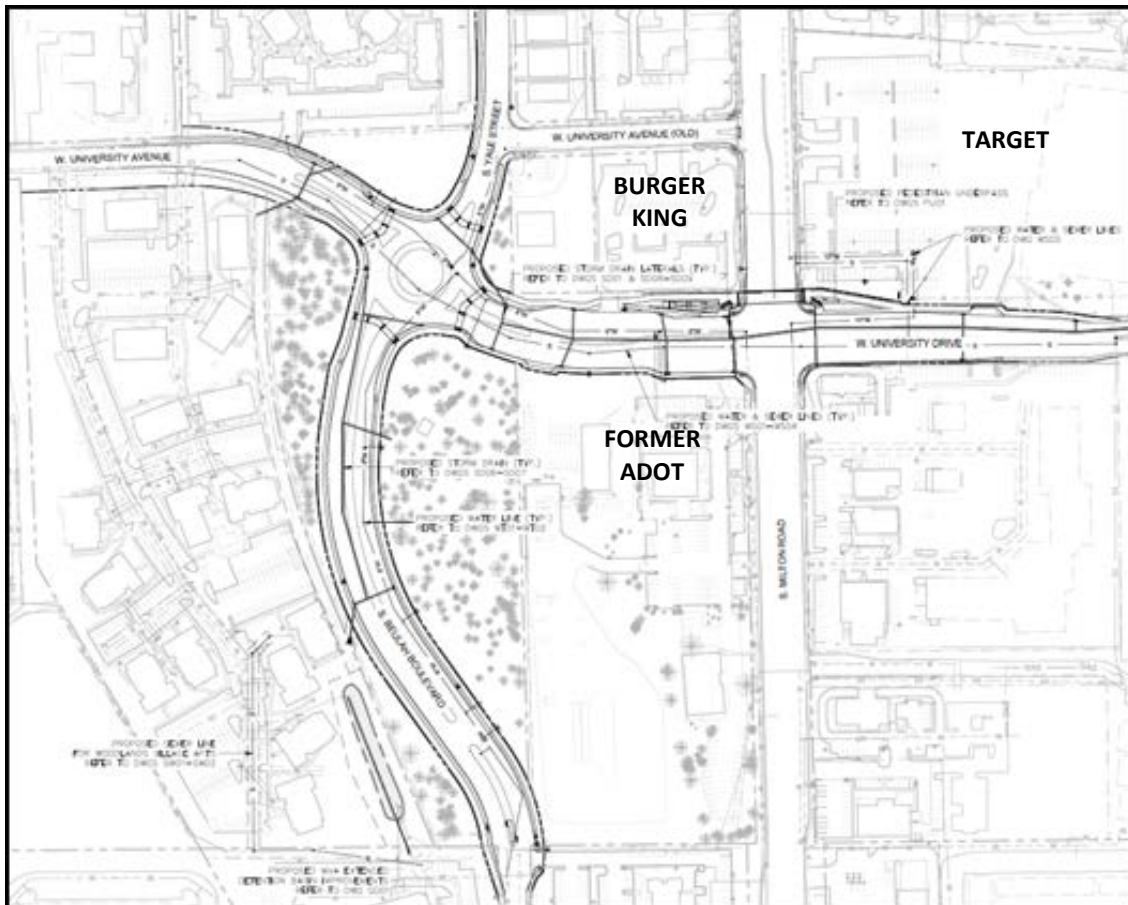
## **Beulah Boulevard Extension/University Drive Realignment** (DESIGN PHASE)

FUND: TRANSPORTATION TAX (STREETS)

**Description** – This project extends the northern terminus of Beulah Boulevard to connect with University Drive. Furthermore, University Avenue (west of Milton) will be realigned to match up with University Drive (east of Milton). A new roundabout will be constructed where Beulah Boulevard and University Drive will intersect.

### **Project Update:**

- Project team held a virtual meeting last week with the subconsultants as final design moves forward.
- Project team held a virtual meeting with NAU to discuss coordination, design, and review processes.
- Final design work should be completed by late fall 2021.
- City, in concert with Vintage Partners, are in final design of the roadway project. The engineering firm completing the design work is Shephard Wesnitzer, Inc. (SWI).
- Met with Vintage Partners to coordinate property acquisition efforts specifically related to Target.



*Extent map of new Beulah and University Realignment – taken from 30% plans.*

## Quiet Zone Modifications (Elimination of Wayside Horns) (PLANNING PHASE)

FUND: TRANSPORTATION TAX (STREET OPERATIONS)

**Description** – The City Council considered a citizen petition in July 2017 regarding the Quiet Zone and the sound level of the wayside horns on the eastside of town at the Steves and Fanning crossings. The wayside horns are operated by the City at both crossings and are an approved supplemental safety measure used in the absence of the train mounted horn. The other 3 crossings in Flagstaff that are a part of the Quiet Zone utilize One Way streets (Beaver and San Francisco) and a non-traversable median (Ponderosa Parkway) to satisfy the supplemental safety measure requirement for the Federal Railroad Administration’s requirements for Quiet Zones and therefore do not require wayside horns.

### **Project Update:**

- In response to the petition we measured the sound levels and the aiming of the wayside horns. After the wayside horns were confirmed to follow all regulatory standards, the City moved on to pursue other supplemental safety measures to eliminate the wayside horns. Efforts by City staff are ongoing in working towards solutions in collaboration with BNSF, Arizona Corporation Commission-Railroad Safety Group, ADOT, and various roadway consultants.
- Staff prepared a CCR dated 11/20/2020 to update Council on the detail of these supplemental safety measures and what we hope to accomplish on the eastside of town.



*Fanning Railroad Crossing*

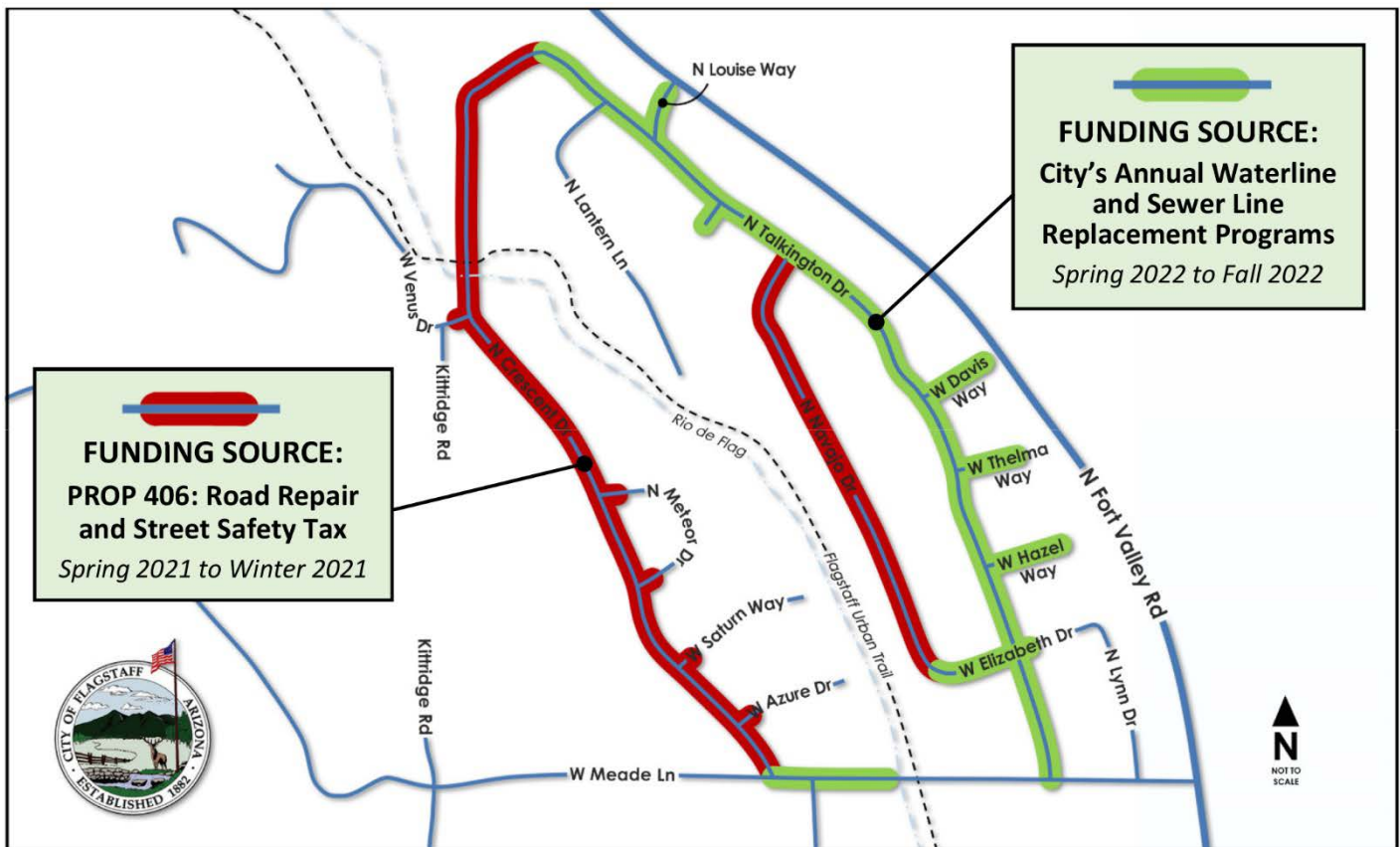
## Coconino Estates Improvements Phase II (DESIGN PHASE)

FUND: ROAD REPAIR & STREET SAFETY & ANNUAL WATERLINE AND SEWER LINE REPLACEMENT PROGRAMS

**Description** - This is a utility and roadway improvements project located on several streets in the Coconino Estates neighborhood as seen in the map below. Improvements on the streets generally consist of replacing all existing utility and roadway infrastructure. The utility improvements include replacing the existing water and sewer mains, water and sewer services, fire hydrants, and manholes. The roadway improvements include replacing the existing asphalt roadway, replacing rolled curb with vertical curb, constructing driveway ramps at driveway entrances, and replacing select sidewalk only where it currently exists on Crescent Drive. Sidewalk will NOT be installed where it does not currently exist. For additional information visit the Project website at [www.coconinoestates.com](http://www.coconinoestates.com)

### Project Update:

- A Project Presentation Video was posted to the Project website in lieu of conducting the typical community open house meeting ([www.coconinoestates.com](http://www.coconinoestates.com)).
- The Final Approved Plans are anticipated to be routed for signatures on the second week of February.
- The Project will be advertised in February 2021 with construction to start spring 2021.
- The City will not permit the successful contractor to utilize the same construction yard as is being used for the Coconino Estates Phase I project near Thorpe Park.



Coconino Estates Improvements Phase II Project Limits – Funding - Schedule Map

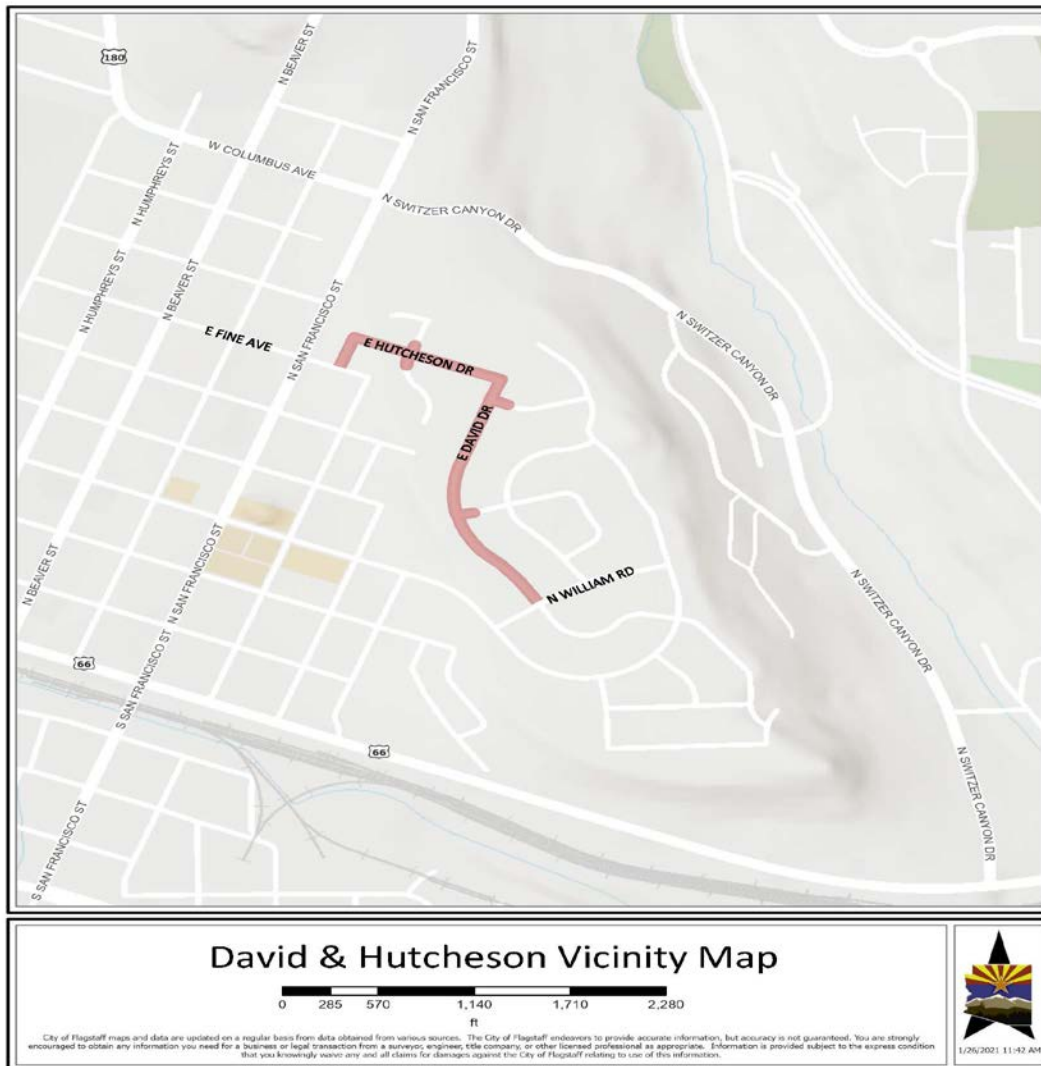
## **West Flag Improvements - David & Hutcheson** (DESIGN PHASE)

FUND: ROAD REPAIR & STREET SAFETY

**Description** - This is a utility and roadway improvements project located on David Drive and Hutcheson Drive as seen in the map below. The Project originally included Canyon Terrace and was bid as one project in the spring of 2020 but was pulled at the end of the bidding process given the economic and funding source uncertainties due to the COVID 19 Pandemic. It was decided to split the Project into two separate projects consisting of David/Hutcheson and Canyon Terrace. Improvements on the streets generally consist of replacing all existing utility and roadway infrastructure. The utility improvements include replacing the existing water and sewer mains (except for on David Drive), water and sewer services, fire hydrants, and manholes. The roadway improvements include replacing the existing asphalt roadway, replacing rolled curb with vertical curb on David Drive, and replacing select edge improvements (sidewalk, curb and gutter, etc.).

### **Project Update:**

- Bids have been received and Mountain High Excavating, LLC, has been identified as the lowest responsible and responsive Bidder.
- March 2, 2021 is the targeted City Council Meeting for the consideration of award for the Project.



*West Flag Improvements - David & Hutcheson Project Vicinity Map*



## **Coconino Estates Improvements Phase I** (CONSTRUCTION PHASE)

FUND: ROAD REPAIR & STREET SAFETY

**Description** - This is a utility and roadway improvements project located in the Coconino Estates neighborhood on Beal Road from Rockridge to Fort Valley, Navajo Drive from Navajo Road to Murray, Whipple Road from Navajo Drive to McMillan, and Navajo Road from Navajo Drive to Fort Valley. Improvements on the streets generally consist of replacing existing infrastructure with new, including water and sewer mains, water and sewer services, fire hydrants, storm drains, streetlights, the entire asphalt roadway, and defective select edge improvements (curb & gutter, sidewalk, etc.), except for Whipple Road which will only receive a new water main. There will also be new infrastructure added consisting of underground electric lines for streetlighting and sidewalk on both sides of the street where it does not currently exist on Beal Road, Navajo Drive south of Beal, and on Navajo Road. For additional information visit the Project website at [www.coconinoestates.com](http://www.coconinoestates.com)

### **Project Update :**

Work continues through and during recent snow storms as Eagle Mountain Construction removes snow within the current closure areas of the Project site.

#### **Navajo Road (Construction Zone #1)**

- Majority of improvements are complete.
- Installation of streetlights, one driveway with heated driveway issues, final striping, and landscape restorations remain.
- Navajo Road is now open to all traffic; however, temporary shoulder closures will occur as miscellaneous clean-up operations and streetlight installations continue.

#### **Navajo Drive (Construction Zone #2)**

- Sewer main, sewer services, and electrical conduit installations are complete.
- Water main and water services work continues.
- Storm drain installations are set to begin in February, pending weather conditions.
- Navajo Drive from Hopi Drive to Beal Road is closed to thru traffic, with detours posted around the closure.

#### **Beal Road (Construction Zone #3)**

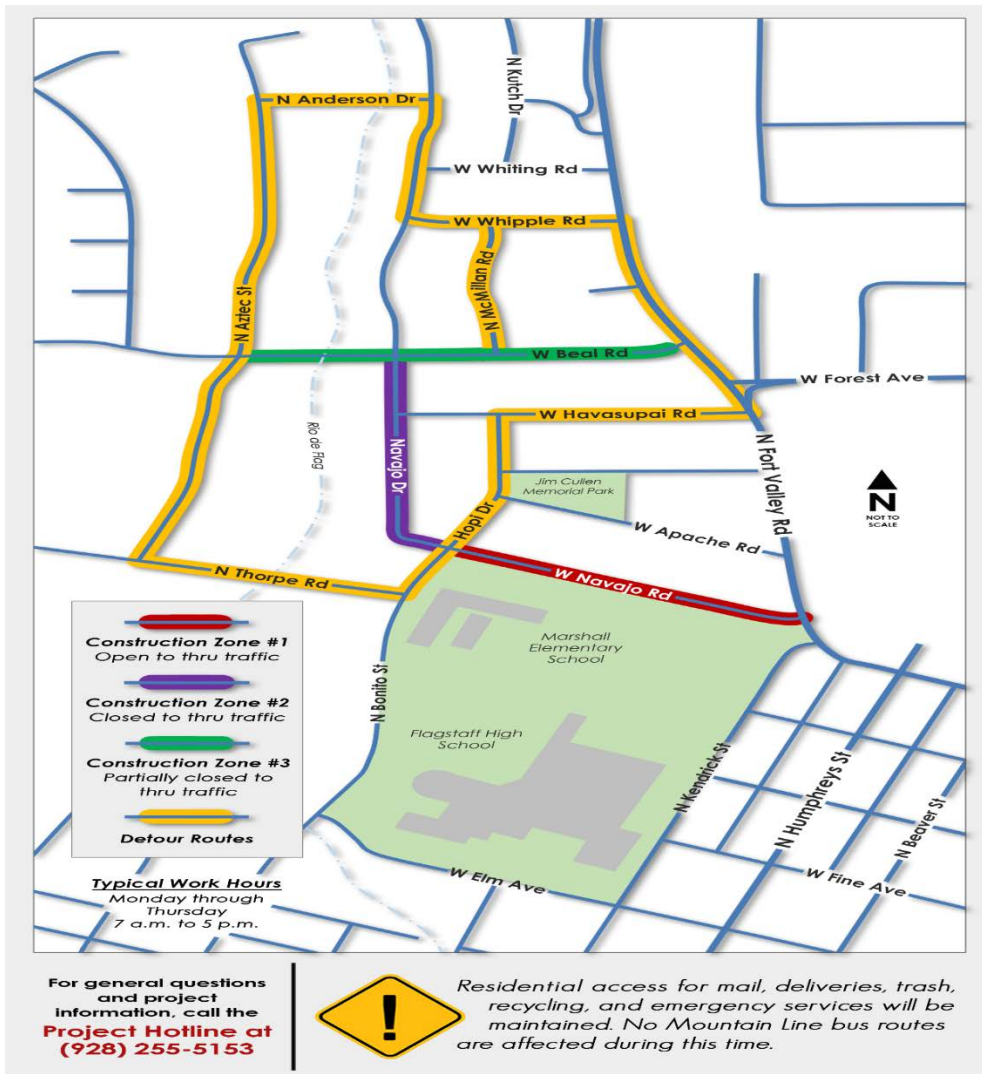
- Water and sewer main construction continues in the Beal/Navajo Drive intersection.
- Beal Road is closed to thru traffic from Aztec to McMillan, with detours posted around the closure.

#### **Spruce Trees at 510 W. Beal Road**

- Staff will coordinate removal of the tree with Ms. Pickard and advise Council via email of that date, providing a minimum of 2 week notice.



*Beal Rd. / Aztec St. intersection looking east at the snow removal operations within the closure area on Beal Rd.*



*Current road closures and detours*

## **Fourth Street Reconstruction** (CONSTRUCTION PHASE)

FUND: TRANSPORTATION TAX (RENEWED TAX)

**Description** – The project is on Fourth Street from the Soliere Avenue intersection, southerly to just past the Sparrow Avenue intersection. The work will construct a new pavement section with two northbound and two southbound lanes and a center turn lane, northbound dedicated right-turn lanes from Fourth Street onto Sparrow Avenue and onto Soliere Avenue, new streetlights, new traffic signals at Soliere Avenue, new fire hydrants, new 12" water main and new 8" water main, curb and gutter and new sidewalk. The reconstruction work will connect with the recently completed bridge replacement project.

### **Project Update:**

- Project construction began on January 11<sup>th</sup>.
- Snow impacts in the past few weeks have slowed progress.
- West half of Fourth Street pavement has been removed.
- Waterline installation work is underway.



*Fourth Street Reconstruction –Project underway*

## **Lockett/Fourth Roundabout** (DESIGN PHASE)

FUND: HSIP GRANT

**Description** – Project consists of the design and construction of a new roundabout at the Lockett-Cedar-Fourth Street intersection. Project is funded by an HSIP Grant, with supplementary funding from City of Flagstaff. Project design and construction to be administered by ADOT. The new roundabout will improve safety and operations for vehicles, pedestrians and bicyclists in this busy intersection.

### **Project Update:**

- Project design and construction to be administered by ADOT.
- Concepts were presented to Bike and Ped Advisory Committees on January 14<sup>th</sup> and to the Transportation Commission on February 3<sup>rd</sup>.
- A discussion of roundabout alternatives is scheduled for the February 16<sup>th</sup> City Council meeting.



*Existing Lockett-Cedar-Fourth Intersection*

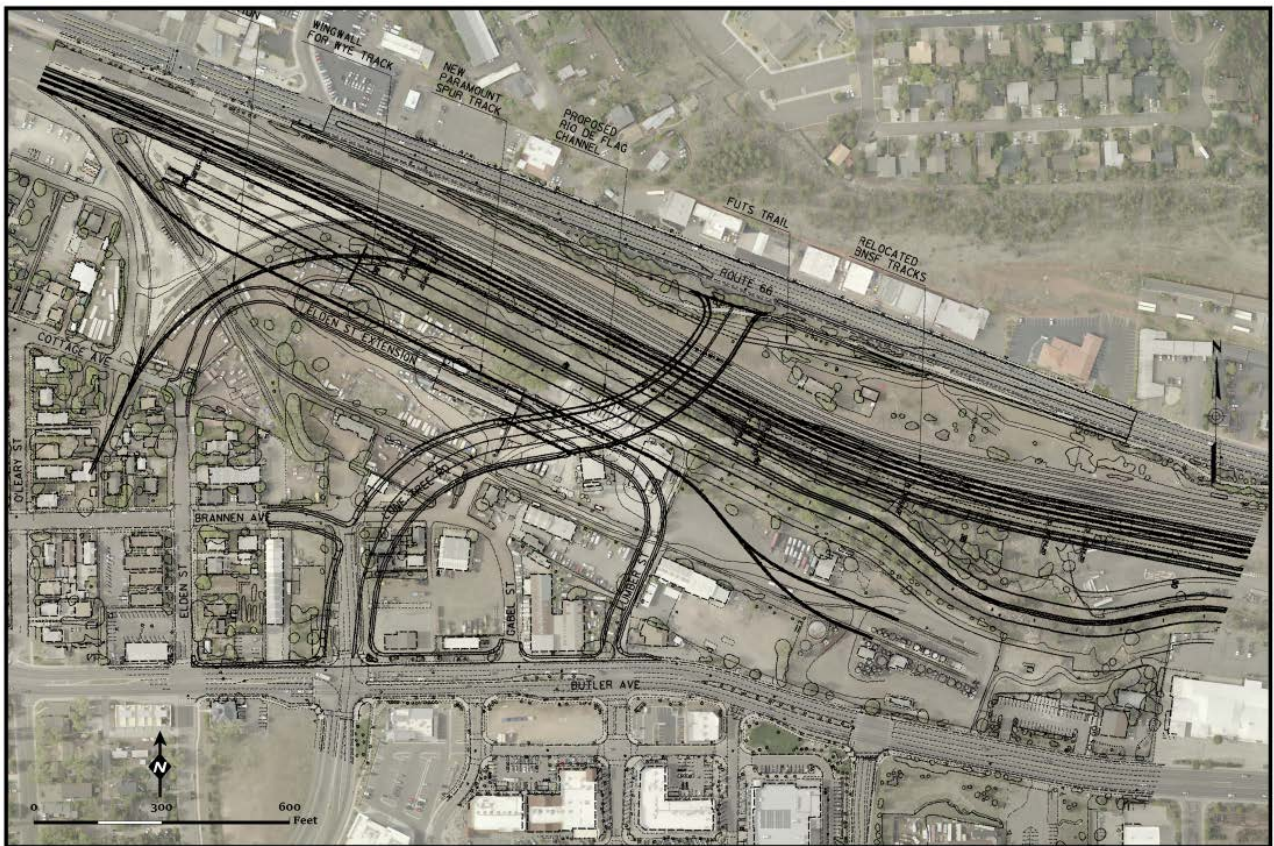
## **Lone Tree Overpass Project** (Design Phase)

FUND: TRANSPORTATION

**Description** - The Lone Tree Overpass Project will provide a grade-separated crossing over the future Rio de Flag drainage and the BNSF Railway corridor from Butler Avenue to Route 66. Funding for this project is provided through voter approved bonds as designated in the 2018 Proposition 420.

### **Project Update:**

- City Council approved the first phase of Project design services at the February 2, 2012 meeting.
- The Project Chartering and Kick-off Meeting is scheduled for February 18 to engage with City staff and Stakeholders.
- Coordination efforts have commenced with BNSF to determine required track mitigation work.



*Lone Tree Overpass Concept Design*

## **Library Entrance** (DESIGN PHASE)

FUND: BBB - BEAUTIFICATION

**Description** – Project to bring Library Entrance into ADA compliance with new handicap ramp and new overall vision for the entrance. Public art will be incorporated into project and an artist is being brought onto the design team. Project includes upgrades to landscaping, handicap parking, parking lot, and hardscape.

### **Project Update:**

- Artist contract was awarded at Dec. 1 City Council Meeting.
- WLB Group is working on conceptual plans for entrance.
- The Project Team will present updated concepts to the *Commission on Inclusion and Adaptive Living* on February 9<sup>th</sup>.



*Library Entrance Project-Existing Conditions*

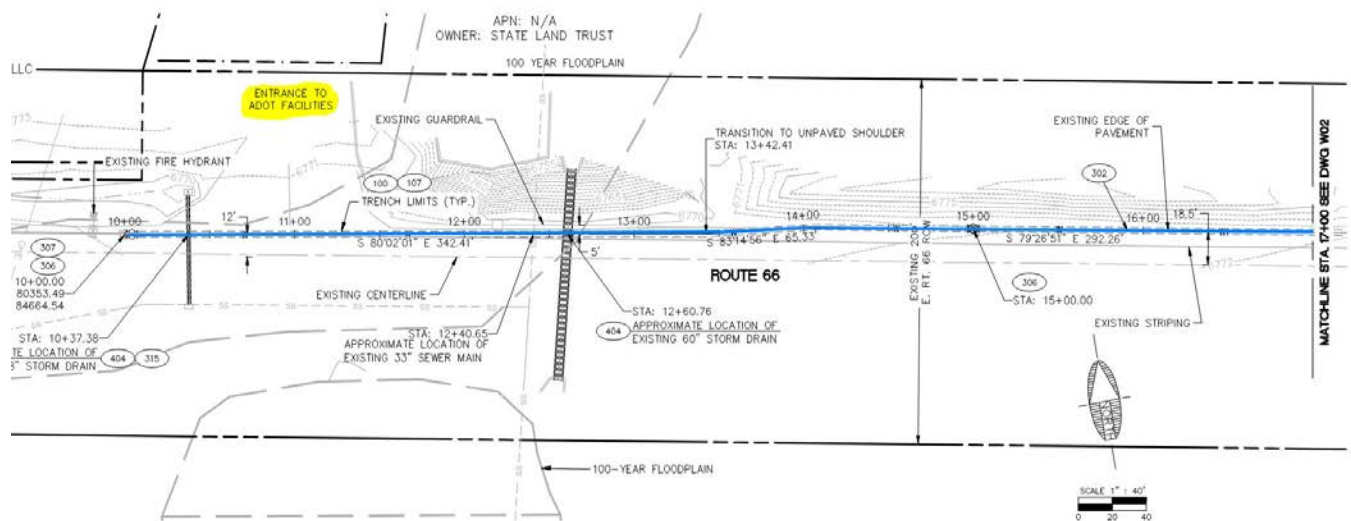
## East Route 66 and El Paso Flagstaff Waterline Extension (DESIGN PHASE)

FUND: AGING INFRASTRUCTURE

**Description** – A utility improvements project that extends the 12" ductile iron waterline approximately 2,450 linear feet from approximately the intersection of Test Dr. and Rt. 66 to the intersection of El Paso Flagstaff Rd. The waterline extension continues north, up El Paso Flagstaff Rd towards the Wildcat Treatment plant, with approximately 1,600 linear feet of new 8" ductile iron waterline. The project also calls for a repave of El Paso Flagstaff Rd. for the extents of the waterline extension.

### Project Update:

- A third civil plan submittal has been received and is under review.
- Capital Staff is working with the Real Estate Manager to secure easements on State land for the new waterline.
- Plans are being coordinated with the proposed Industrial Park to the east, a private development project, to allow them water access and to mitigate future pavement cuts into the new road.
- Tentative construction schedule is to construct the waterline extension along Rt. 66 and El Paso Flagstaff Road during spring of 2021 followed by the paving of El Paso Flagstaff Road in the summer of 2021.



*Current civil plan set in review, blue line represents the starting point of the waterline extension that begins just west of the ADOT facilities driveway and Rt 66 intersection.*

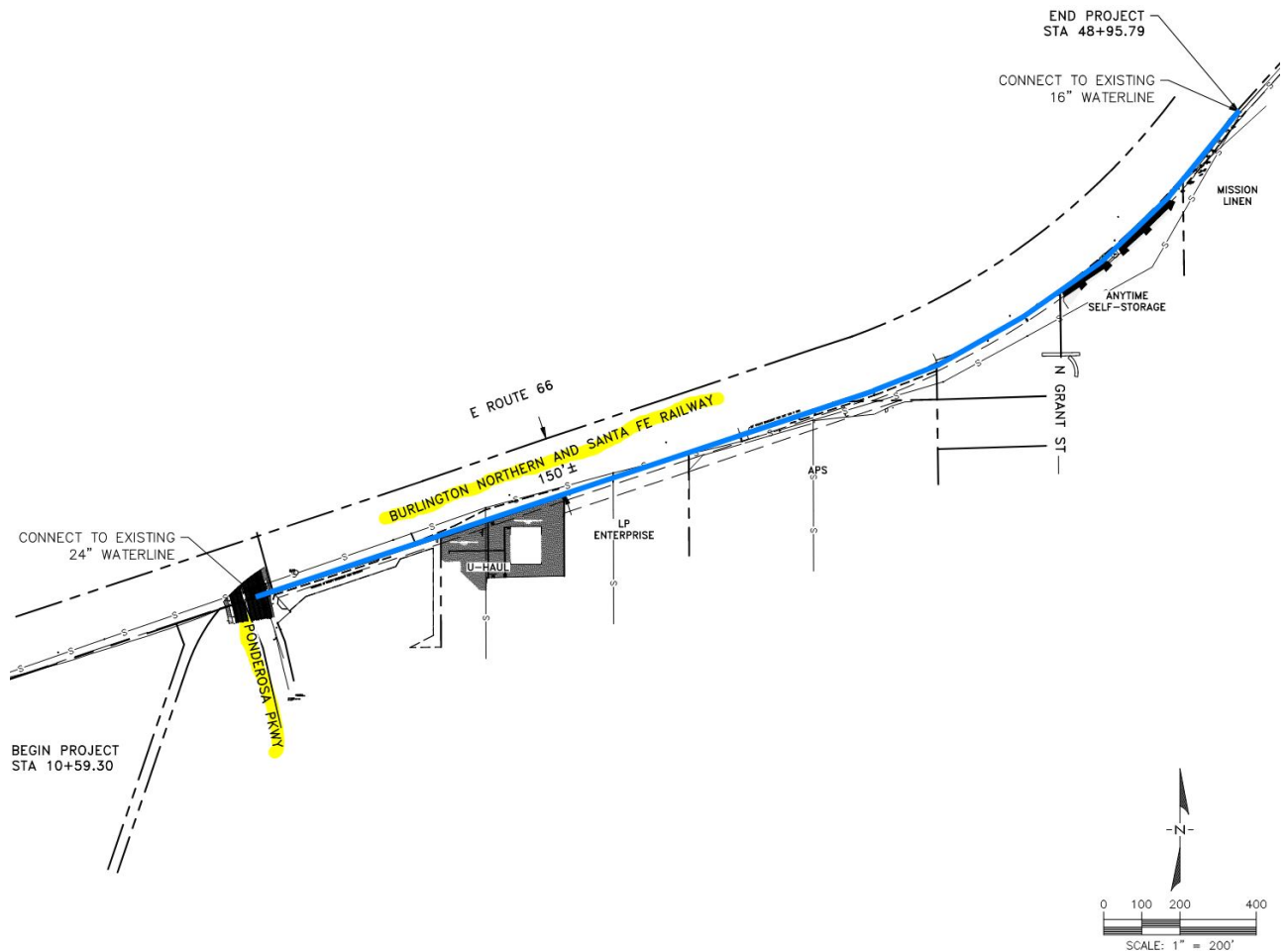
## Huntington Waterline Replacement (CONSTRUCTION PHASE)

FUND: AGING INFRASTRUCTURE

**Description** - The Project consists of installing 3,000 LF of new 16" ductile iron waterline, and associated roadway improvements. Included in the project will be new water services, fire hydrants and air release valves. The existing waterline in this area is over 60 years old. This project is part of the City's ongoing aging water infrastructure replacement program.

### **Project Update:**

- A bid package has been advertised and will close February 22<sup>nd</sup>
- Capital Staff is in the process of public outreach to help coordinate removal of materials that have been stored in the easement by businesses that border the project's boundaries.
- Current working schedule has a proposed start of construction in late April of 2021.



*Vicinity Map of improvements, blue line represents the new 16" waterline*

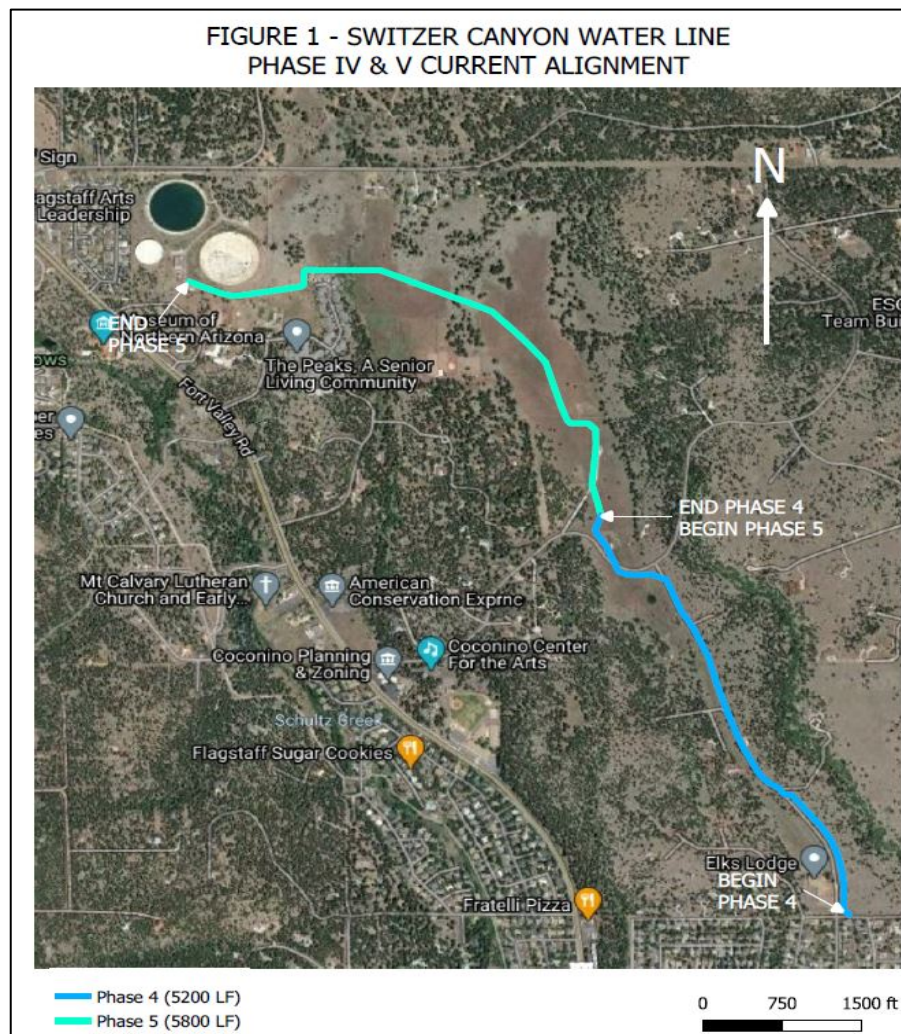
## Switzer Canyon Transmission Main Phase IV & V (Design Phase)

FUND: AGING INFRASTRUCTURE

**Description** – The Project consist of installing two new transmission mains, 24” and 16”, that will complete the distribution system, zone A and B, from the Downtown area to the City Reservoirs near Cheshire. The length of Phase IV and V is approximately 11,000 feet. The project is within City limits and the urban distribution service area within the County. Included in the project will be the two water mains with appurtenances, new bundled water meter/service locations and fire hydrants.

### **Project Update:**

- Property acquisition is underway with legal descriptions, environmental clearances and site assessments.
- Phase V is in the planning phase to define the final alignment.
- Construction of Phase IV is anticipated for 2021
- Construction of Phase V is anticipated for 2022
- Comments on the 90% level plans were transmitted to Turner Engineering for their action. Final construction plans are expected spring 2021.
- Staff anticipates presenting the out of City water services request to the City Council for final approval, spring 2021.



## **Summit Waterline Replacement** (CONSTRUCTION PHASE)

FUND: AGING INFRASTRUCTURE

**Description** - Approximately 3,300 ft of new waterline, water services, fire hydrants, and pavement reconstruction. The City intends to replace the water infrastructure and pavement on: S. Walnut Street from Santa Fe Avenue to Coconino Avenue; S. Sycamore Street from Santa Fe Avenue to Grand Canyon Avenue; S. Spring Street from Montvale Avenue to Grand Canyon Avenue; W. Summit Avenue from Santa Fe Avenue to end; and W. Santa Fe Avenue from Walnut Street to Thorpe Road. Waterline only will be installed on W. Montvale Avenue from Santa Fe Avenue, to end. The existing waterlines in this area range from 58 to more than 90 years old. This project is part of the City's ongoing aging water infrastructure replacement program.

### **Project Update:**

- All underground work is complete.
- Walnut St and Sycamore St have been paved, temporarily.
- Final pavement to be installed in Spring 2021.
- Project is in winter shutdown.



*Summit Water Project-Trenches patched for winter*

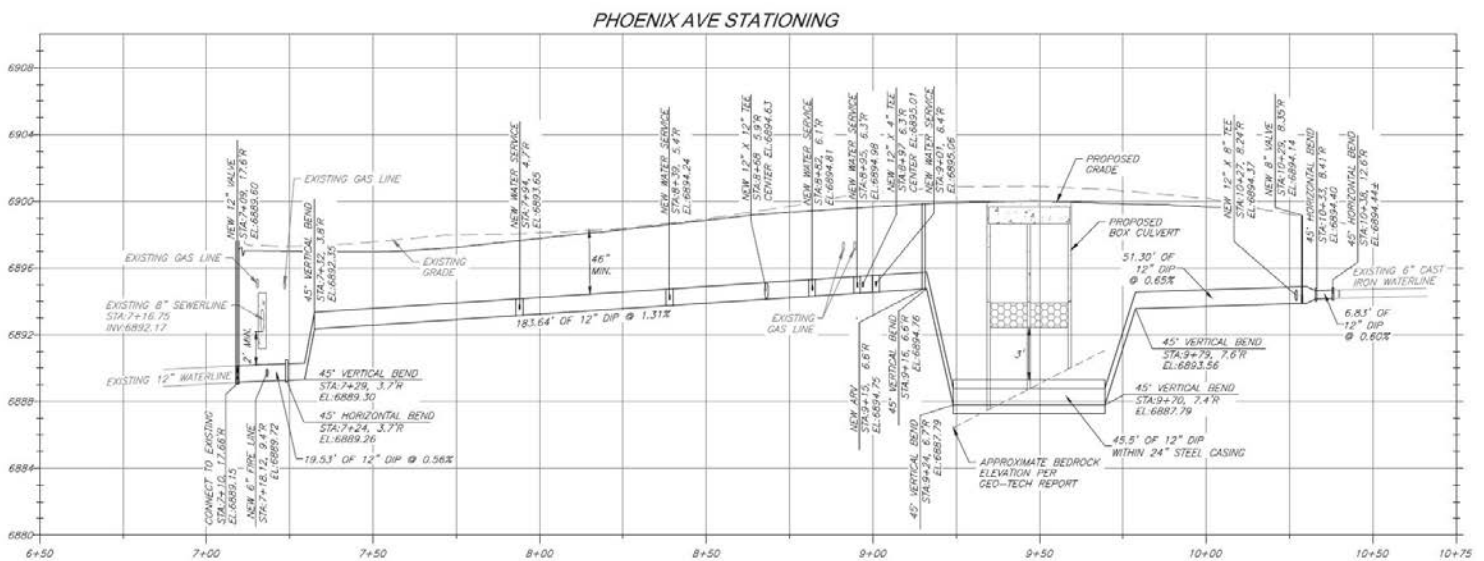
# Phoenix Avenue Bridge and Waterline Replacement (DESIGN PHASE)

FUND: STORMWATER & AGING INFRASTRUCTURE

**Description** - The project will replace the Rio de Flag box culvert (which runs beneath Phoenix Avenue and the Zani building, and functions as the Phoenix Ave bridge) with the appropriate conveyance structure and will upsize the current waterline to a 12" waterline in Phoenix Avenue from Mikes Pike to Beaver Street. Phoenix Avenue will be reprofiled and lowered to achieve a standard street section, roadway surface drainage issues will be addressed, edge improvements will be made as needed and the roadway will be repaved. The existing waterline in this area is over 114 years old. This project is part of the City's ongoing aging water infrastructure replacement program.

## Project Update:

- A second review of the Civil Plans has been completed with consulting Design Engineer for modifications/revisions.
- Capital Staff is currently coordinating with all businesses and property owners in the area that will be impacted by the project.
- The project schedule has a targeted advertisement for bids in mid-March and breaking ground at the beginning of May. Project duration is estimated at five months and will be completed by fall of 2021.
- The bridge is stable and listed in "fair" condition by ADOT as of today. The bridge could degrade to a condition of "poor" at any time, at which point ADOT would reduce the capacity of the bridge, restricting NAIPTA buses and/or possibly any vehicular traffic on Phoenix Avenue. ADOT's next scheduled inspection of the bridge is in August 2021, however, ADOT could perform an inspection at any time.
- Staff looked at two temporary options to fix the bridge and the beam that supports Zani, neither provided significant cost savings. Due to the urgency and lack of structural integrity of the bridge and beam, Staff decided to move forward with a full replacement using a similar size box culvert to convey current flows. A design using smaller culverts wouldn't be allowed at this time, as current flow capacity cannot be reduced per FEMA regulations.



Proposed cross-section of Phoenix Ave. showing new 12" DIP waterline and box culvert

## **Bonito Loadout Station Replacement** (Design Phase)

FUND: WATER SERVICES

**Description** – Project consists of replacing the potable water loadout station located at 410 N. Bonito St.

### **Project Update :**

- Capital Staff met with the design consultant on the week of 2/1 for a scoping kickoff meeting.
- Capital Staff is in talks with Community Investment to see if there is an opportunity to use beautification funds or to add an art installation at the new loadout station.
- Capital Staff met with Water Services and Customer Service at the Commerce loadout station at the beginning of the year to look at pros and cons of that station.



*Existing potable water loadout station on Bonito Street*

## Rio de Flag Flood Control Project (Design Phase)

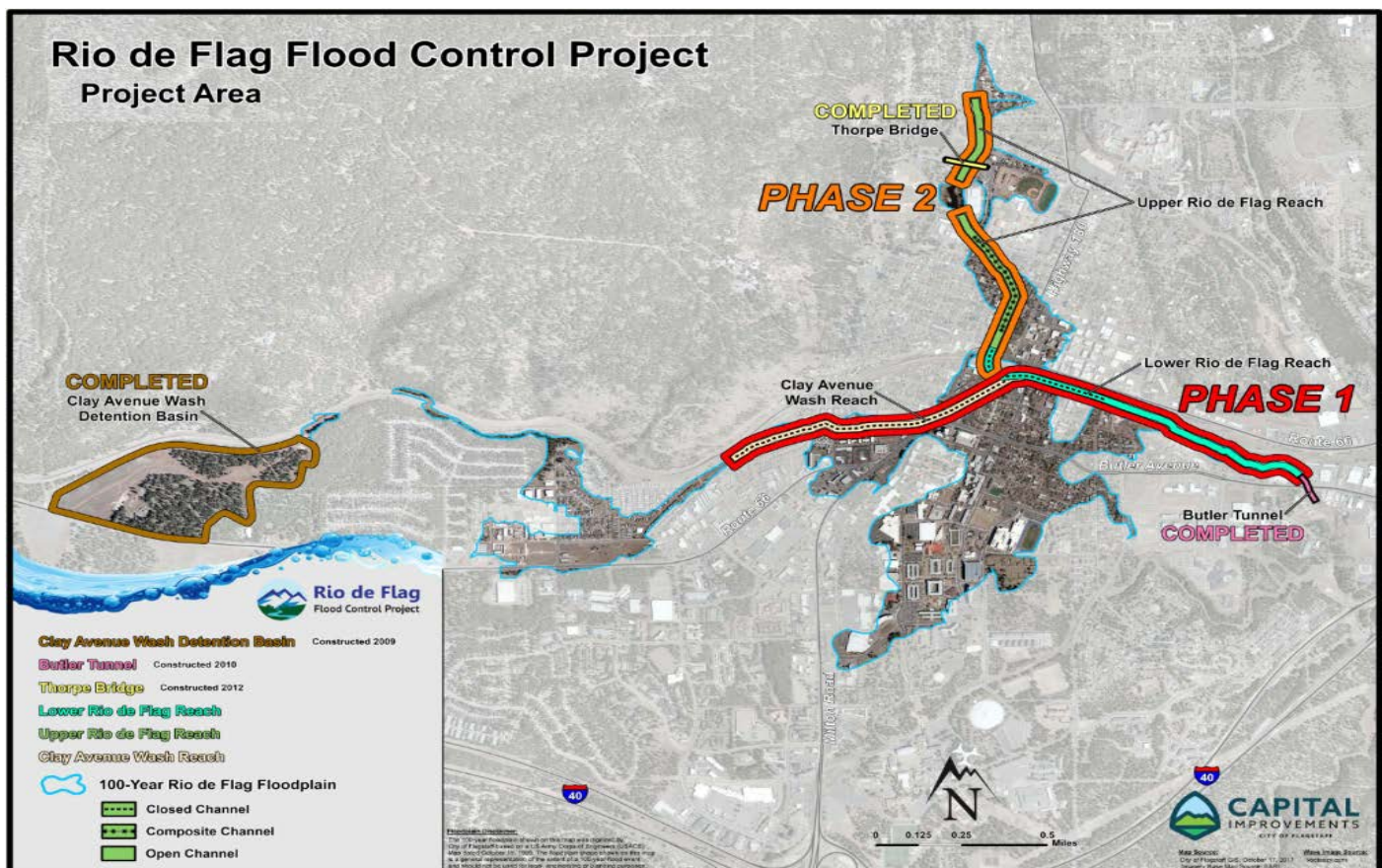
FUND: STORMWATER & AGING INFRASTRUCTURE

**Purpose** – The purpose of the Rio de Flag Flood Control Project is to remove the hazards associated with the hundred-year storm event, which include property damage, life safety concerns, and community economic impacts. From research conducted by the Army Corps, it was determined that a significant flood would damage approximately 1,500 structures valued at over \$916M and cause \$93M in economic damages, for a total impact of over \$1 Billion dollars.

### Project improvements will provide:

- Reduction of flooding damage and safety hazards.
- Opportunity for Downtown and Southside redevelopment.
- Elimination of flood insurance requirements and restrictive floodplain management regulations.

**Description** - Design consists of channel improvements along both the Rio de Flag and Clay Avenue Wash channels through central Flagstaff and includes a combination of underground concrete box culverts, open channel, and composite channel. The composite channel section has both an underground culvert to carry large volumes of water and a smaller open channel on top, which will provide an aesthetic element of flowing surface water during rainfall events. Total project length is approximately 5,000 feet.



Rio de Flag Project Location Map

### Current Status -

- **Design** - Work continues on the construction documents and design completion between the City's and Army Corps' consultants, including the channel crossing on ADOT right-of-way at the Milton Road and Butler Avenue intersection, utility relocations, and design of the project on BNSF Railway property.

- **Real Estate** - Real Estate documents (legal descriptions, encumbrance maps, and utility easements) are currently being developed for property acquisition.
- **Public Involvement** - Several public involvement items have been created and posted to the project website, including:
  - o Photo simulations and video for the Flood Wall, Composite Channel, Open Channel (Clay Wash) and Open Channel (Lower Reach).
  - o A virtual meeting room that has project exhibits and information.
  - o A Southside Community Interview video.
  - o The link and web address for the Rio de Flag Public Information page is <https://www.flagstaff.az.gov/4189/Rio-De-Flag-Flood-Control>.
- **BNSF Railway** - The City received further details on the project mitigation measures on January 19, which are currently being evaluated.
- **Meeting Activity** - Staff presented a project overview to new Mayor and Council at the January 26, 2021 Council work session. City staff continues to meet with BNSF to coordinate mitigation measures.



*Upper Reach Composite Channel Concept*



## **Wildcat Hill Wastewater Treatment Plant (WHWWTP) Digester Complex** (DESIGN PHASE)

FUND: WATER SERVICES-SEWER

**Description** – Project consists of a two-tank digester complex with a digester control building, piping to connect new/existing systems, boilers, heat exchangers, sludge recirculation system, and gas handling system. The purpose of this project is to significantly increase the Bio-solids handling capacity of the wastewater treatment plant.

### **Project Update:**

- Capital Staff has compiled a Request for Statement of Qualifications (RSOQ) document for advertising that has been sent to our Purchasing Division. Purchasing will be advertising the RSOQ mid-February.
- Delivery method will be a Design-Bid-Build.
- Design is targeted for 2021 and construction is anticipated for 2022-2023.



*Existing Wildcat Plant, red circles represent proposed location of the two new digesters*

## **Route 66 ADOT Bridge Replacement Project** (CONSTRUCTION PHASE)

FUND: ARIZONA DEPARTMENT OF TRANSPORTATION

**Description** – Project consists of removing the existing concrete bridge that crosses the Rio de Flag channel and replacing with a precast box girder bridge with precast abutments. Included with the project are roadway approach slabs on either side of the new bridge, channel improvements with bank protection and revegetation mitigation measures. The purpose is to provide a new Route 66 bridge crossing at the Rio de Flag to serve Route 66/Milton.

### **Project Update:**

- The ADOT contractor, FNF Construction, is contracted to complete the work by October 2021.
- Traffic Control, lane closures and detours are in affect when construction is in progress.
- The contractor completed the wing walls and backfilled on the north side of the Route 66.
- The contractor has completed the southeast wingwall with backfill. Placement of concrete is in progress for the southwest wingwall.
- ADOT continues to update City staff on construction matters and will release information to the public through media releases.
- The contractor has implemented a lane closure of EB Route 66 during work operations. Any traffic lane closures will help with construction efforts and delivery of materials to the project location. ADOT will be monitoring the traffic and will make alterations to increase traffic flow if needed.
- IGA amendment will be presented to Council on March 2<sup>nd</sup> to add Portland Cement Concrete Pavement to the scope of work. This will be a no cost/no time as the city's previous contribution paid to the project is more than sufficient to cover this change.



*Backfill complete on the north side of the Rt. 66 and concrete placement of the southwest wingwall*