



ENGINEERING DIVISION
Capital Improvements Section

Monthly Capital Projects Report
November 2021

Honorable Mayor & Council,

Our reporting continues to include only projects that have experienced substantial progress.

The attached map is a comprehensive view of all active projects in our community, either in planning, design, or construction.

Active Transportation Master Plan

On September 13, 2021, the City released the draft Active Transportation Master Plan (ATMP) for a 60-day public comment period. The ATMP will serve as a guide to enhancing walking and biking in Flagstaff. The draft document includes detailed information regarding pedestrian and bicycle accommodation and establishes a series of goals, policies, and strategies to support walking and biking.

- A community survey is available online through the Flagstaff Community Forum until November 19, 2021 to gather public comment. [Follow this link](#) to access the survey.
- A series of five community open houses are planned during the 60-day public review period to inform the public, discuss the contents of the plan and provide opportunity for community questions and feedback. Two open houses have been conducted via Zoom to date:
Wednesday, September 29, 2021 | 6:00 - 7:00 p.m.
Thursday, October 7, 2021 | 6:30 - 7:30 p.m.
Recordings of the first two community open houses have been posted on the [FUTS Facebook](#) page. Three more open houses are upcoming, including one in-person meeting and two virtual:
Saturday, October 16, 2021 | 10:00 a.m. - 12:00 noon @ Bushmaster Park
Tuesday, October 19, 2021 | 12:00 noon - 1:00 p.m. [online via Zoom](#)
Wednesday, October 27, 2021 | 5:30 - 6:30 p.m. [online via Zoom](#)
- Rick Barrett and Martin Ince of the Engineering Division were [interviewed by Peter Bruce on KAFF radio](#) on Tuesday, October 5, 2021.
- Staff continues to refine the 20-year program of pedestrian and bicycle projects that will be funded with the pedestrian/bicycle portion of the transportation sales tax and Mountain Line's first/last mile grant. An interactive map of planned sidewalks, bikeway, FUTS trails, enhanced crossings, and grade-separated crossings is available at [this link](#).
- The ATMP will be accompanied by a minor amendment to the Regional Plan to incorporate infrastructure maps from the ATMP and some of its general language. A draft of the minor Regional Plan amendment [can be viewed here](#).
- The 60-day public review period ends on November 19, 2021. At that time staff will compile public comment and make any changes to the plan as necessary. The final process for review and approval is scheduled for late-2021/early-2022. Final Council approval is anticipated in March of 2022.
- The [draft ATMP can be downloaded here](#). For more information, [go to the ATMP webpage](#).

City of Flagstaff



DRAFT **Active Transportation** **Master Plan**

Woody Way

A citizen petition was submitted to Council for discussion on September 23, 2021 to make Woody Way a one-way street westbound, while still allowing for emergency vehicular access. Staff gave a presentation to Council explaining background of the Woody Way Gate and touched on some of the data that has been, and will be, collected. Since this issue has already been in the hands of the Transportation Commission, Council decided to not allow the FAIR item to move forward and to let the Commission make a recommendation to Council on a decision for the connector roadway.

Project Update:

- The item was discussed at the Transportation Commission meeting on October 6, 2021. Staff recommended three options, while also mentioning a few other options that citizens have brought up. The three recommended options include:
 1. Leave Woody Way open
 2. Close Woody Way
 3. Make Woody Way a one-way roadway (EB or WB)
- A few other options that citizens have brought up include:
 1. Prohibit parking on both sides of Woody Way
 2. Prohibiting parking on Highland Mesa and Ax Handle
 3. Install traffic calming
 4. Making Ax Handle/University a one-way loop using diverters
- There were 19 public comments on this topic. Transportation Commission unanimously recommended that Council keep Woody Way open to two-way traffic movement and to all modes of travel but asked that Staff come up with mitigation options for some of the concerns voiced by the Boulder Pointe neighborhood.
- City Transportation met with Public Works on October 21, 2021 to discuss other traffic calming mitigations that may work for this area. Some options that were discussed include speed tables, boulders in parkway or behind parkway, stop bars & double yellow markings, raised crosswalks at intersections, and removing parking on Woody Way. City Transportation will begin working on drawings to include some of these options to bring to Council for the scheduled December 14th meeting. Invites to the Council meeting will be sent to both neighborhood HOA's.



Woody Way, looking west from Boulder Pointe to Presidio

Woodland Drive Speed Concern

Citizens have concerns with speeding and parking. Concept drawings for traffic calming were put together and presented at Transportation Commission in December of 2020. Temporary traffic calming measures including candlestick traffic circles at Maricopa and Trail of the Woods and a radar feedback sign on the east end have been installed. New data was collected and determined the temporary traffic calming measure has worked as the 85th percentile speed has decreased by 4 mph.

- The new information was presented to the Transportation Commission during the October 6th meeting and three options were given.
 - Keep the design as it is in the field (two traffic circles with a radar feedback sign) and move forward with finding funding for making the features permanent.
 - Make little tweaks to the temporary setup. An example is adding bump outs to the eastern calming feature in the eastbound direction. This would not need to be studied again before we move forward with finding funding for making the features permanent, but we would like to make the tweaks before the first snow to test plowing operations this winter.
 - Try a whole new option. Examples include the center island medians, choker, etc. The new setup would need to be implemented before the first snow and then traffic counts would need to be taken again in the Spring.
- Transportation Commission decided to have Staff make some tweaks to the design of the traffic circle at Woodland Dr. and Maricopa after hearing from the neighborhood. The next steps are finding funding and then getting a designer and contractor on board.

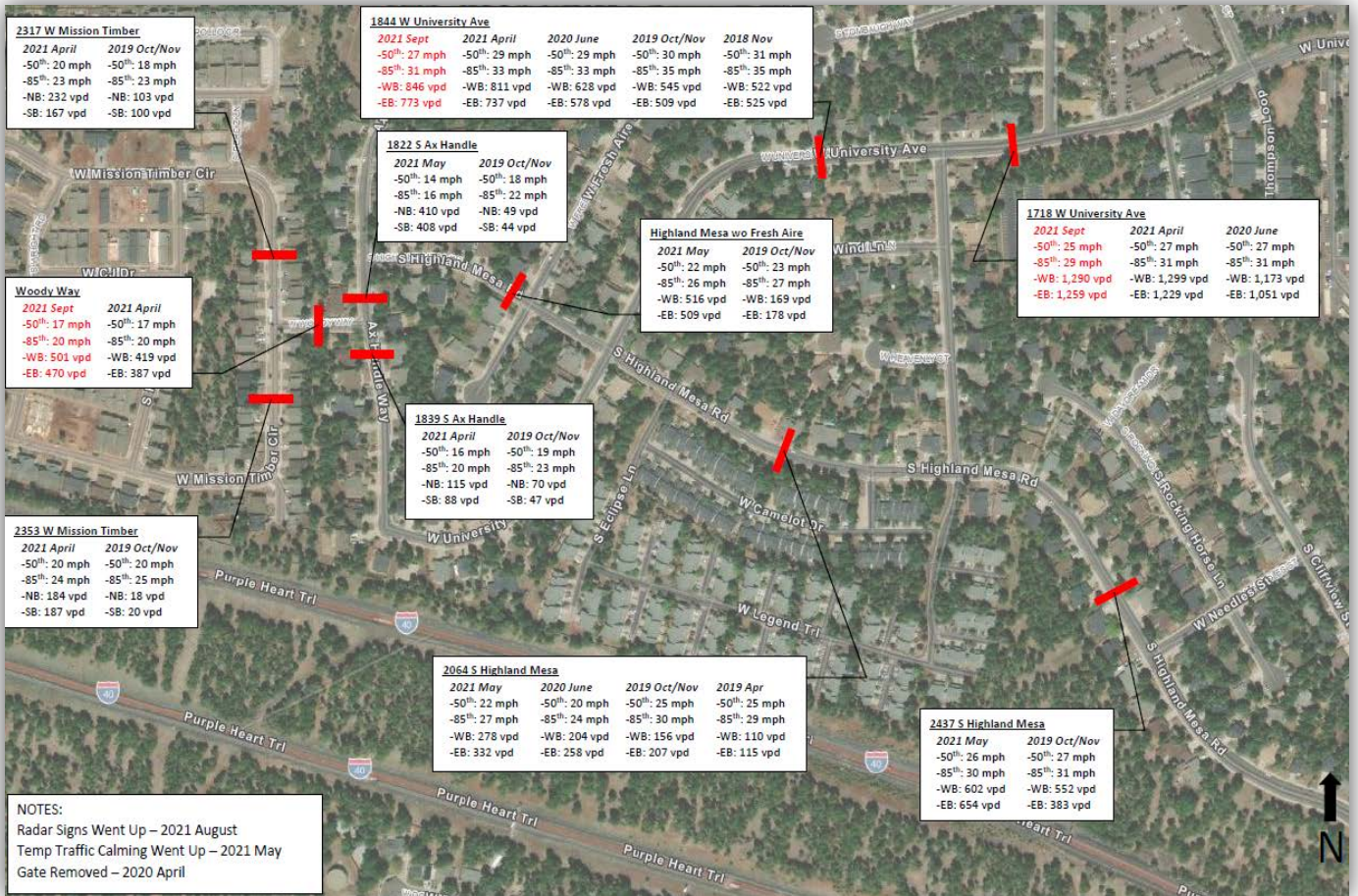


Boulder Pointe – University Avenue Traffic Calming

Through the removal of the Woody Way gate that once separated the neighborhoods of Presidio and Boulder Pointe, Staff discovered that speeds on University are high enough to warrant traffic calming measures. We have presented to Transportation Commission concepts for traffic calming and invited the public and HOA's for input. The outcome was to install temporary center island medians and a bump out using candlesticks, along with a radar feedback sign at each end of the straightaway on University. Public Works installed the temp traffic control along University in June 2021. Traffic counts have been collected to see if the temp traffic calming measure have worked and the 85th percentile speed has decreased by 2 mph in both locations on University.

- The new information was presented to the Transportation Commission during the October 6th meeting and three options were suggested:
 - Keep the design as it is in the field (2 center island medians and a bump out with radar feedback signs) and move forward with finding funding for making the features permanent
 - Make little tweaks to the temporary setup. Examples include adding bump outs to the western calming feature, adding bike ramps, etc. This would not need to be studied again before we move forward with finding funding for making the features permanent, but we would like to make the tweaks before the first snow to test plowing operations this winter.
 - Try a whole new option. Examples include traffic circles, chokers, etc. The new setup would need to be implemented before the first snow and then traffic counts would need to be taken again in the Spring.
- There were five public participants that spoke to this topic. Transportation Commission asked Staff to make tweaks to the design to allow for bicycles to maneuver through the eastern calming feature, without putting them on the sidewalk for the proposed 150-ft. An idea was to acquire some ROW from the church property to the south of Tombaugh and extend the intersection south. Staff will come back to TC in December to talk about property research, layout ideas, and proposed cost.
- City Transportation met with Public Works on October 21, 2021 to discuss other traffic calming mitigations that may work for this area. Some options that were discussed include striping a 2nd white parking lane line with the correct parking dimension or using water barriers as bump outs near the existing Tombaugh calming feature.





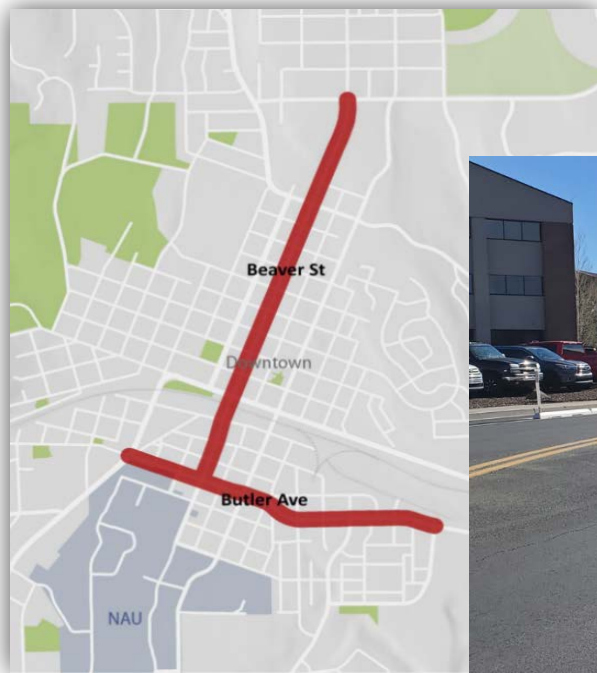
Protected Bike Lane Pilot Projects (Butler Avenue & Beaver Street) (DESIGN & CONSTRUCTION PHASE)

FUND: TRANSPORTATION TAX (BICYCLE AND PEDESTRIAN PROJECTS)

Description – At Council’s July 6, 2021 meeting, staff was directed to pursue two pilot projects intended to enhance the safety and overall experience of the community’s cyclists in our downtown area. Depicted in the map below, Council directed staff to move forward with the concrete & candlestick treatment (see image below) on both pilot projects with a target completion by December 30, 2021. The Butler Ave pilot project’s scope consists of the approved treatment and some additional striping between Milton Rd. and Sawmill Rd., approximately 0.9 miles. The Beaver St. pilot project’s scope consists of the approved treatment, some lane obliteration and restriping, where applicable between Forest Ave. and Butler Ave., approximately 1.2 miles.

Project Update:

- Traffic tube counts were taken week of October 4th on Butler and camera was placed on Butler October 6th to capture bike counts, then October 7th on Beaver
- EMC and its subcontractor completed the obliteration for Phase II – Beaver Street on October 14th and Phase I - Butler Avenue on October 18th.
- New pavement markings; Phase II was completed the on October 15th, and Phase I was completed on October 22nd.
- Curb barriers have been ordered and delivery of all the curbs and delineators is expected the week of November 8th.
- The contractor will begin installing the new curb and delineators for Phase II on November 8th to the 19th, and for Phase I on November 22nd to December 3rd.
- Both Phases are expected to be complete by the end of December 2021 depending on availability of materials and subcontractors as well as favorable weather conditions.



Beaver Ave., looking south, just south of Forest Ave.

Museum Fire Flood Mitigation/Division D (DESIGN & CONSTRUCTION PHASE)

FUND: STORMWATER

Description: The Engineering Division is providing support to Water Services' Stormwater Section and to Coconino County's Flood Control District for emergency operations and flooding associated with the 2021 Monsoon Season.

Project Update:

- Emergency Channel Widening Project at end of Paradise Road.
 - Construction began on September 13th and should be completed by mid-October.
- Providing Project Management services for the Spruce Wash Improvements (Cedar – Dortha).
- Assisting with property acquisition for Spruce Wash Channel Maintenance.
- Providing Stormwater Section support including overflow flood mitigation, debris/sediment clean-up and development of a flood gate detail for use on properties that have perimeter sandbags to allow driveway access when flooding is not occurring.
- Working to identify property acquisition needs along E. Appalachian Drive, E. Skyline Drive, E. Hemberg Drive, E. Matterhorn Drive and N. St. Moritz Way.



Pre-Construction Image of Channel Widening Project at North End of Paradise Road.



Image Taken on 6 October During Walkthrough Meeting of Channel Widening Project.

La Plaza Vieja Traffic Calming (CONSTRUCTION PHASE)

FUND: TRANSPORTATION TAX (SAFETY) & HOUSING [CDBG] ALLOCATION

Description – The project is assisting the neighborhood by improving pedestrian safety of crosswalks, sidewalks, bike lanes and storm drainage at the Kingman Street and Florence Street/Malpais Lane intersections along Clay Avenue.

Contractor – Kinney Construction Services

Project Update:

- The Notice to Proceed was issued for October 6, 2021. The contract duration will be 60 days. Completion of the project is expected for December 5, 2021.
- The week of October 18th, 2021, removal of existing infrastructure began as well as prep work to install the new storm drain.
- The week of October 25, 2021, the installation of the new storm drain has begun with completion expected by November 5, 2021 for the south side of Clay Avenue.
- Concrete infrastructure is expected to start the week of November 8, 2021 for the southside of the Clay Avenue.
- A one-way traffic control plan has been setup to help the construction work. The one-way traffic control plan allows pick up and drop off for the Haven Montessori School.
- Provisions for Rehabilitation & Construction Community Development Block Grant (CDBG) Projects will be used to administer the project. CDBG funding conditions require full expenditures by April 2022.
- Traffic Control Plans will be implemented and will require detours and lane restrictions. The traveling public is encouraged to seek an alternate route.



Plan of Proposed Improvements

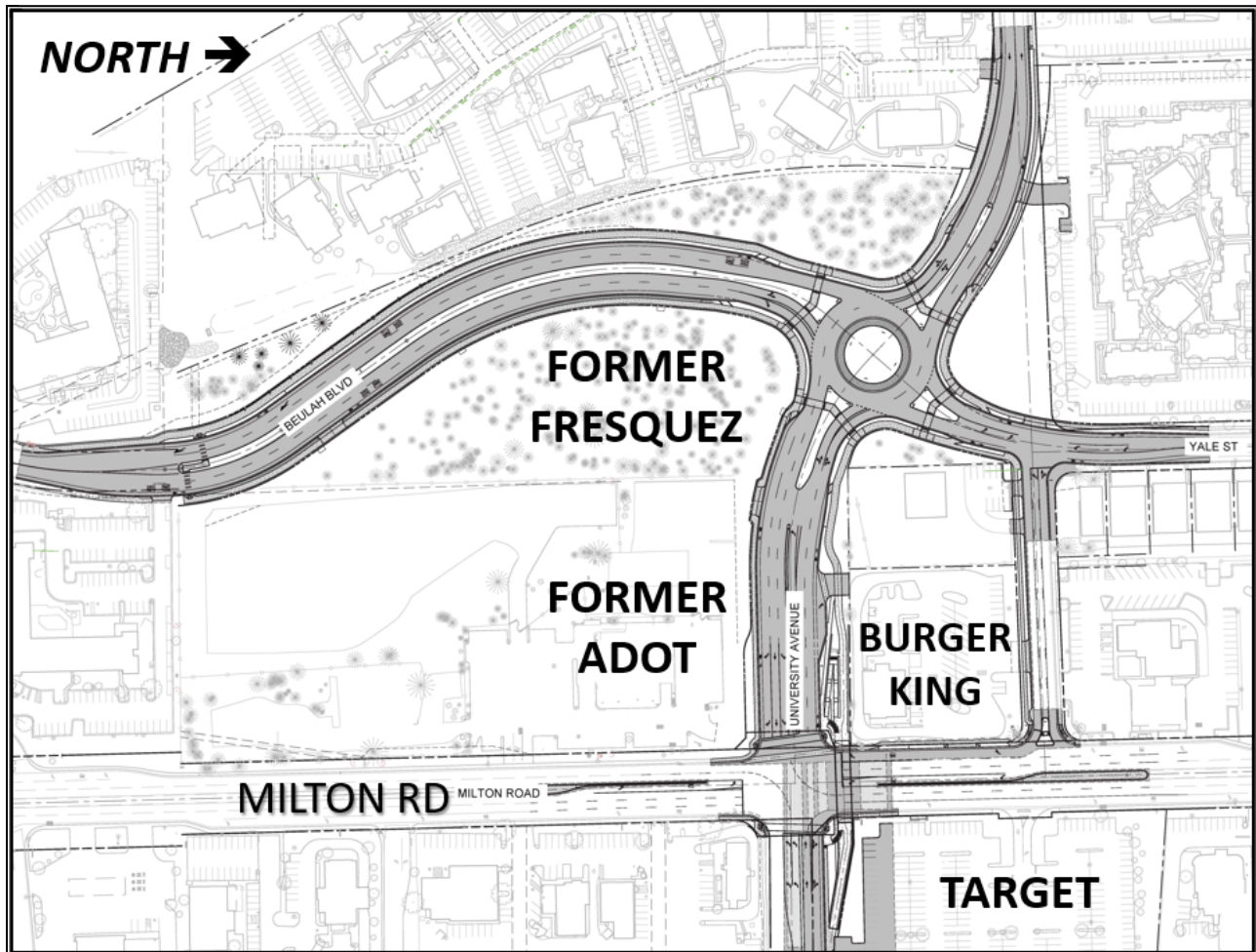
Beulah Boulevard Extension/University Drive Realignment (DESIGN PHASE)

FUND: TRANSPORTATION TAX (STREETS)

Description – This project extends the northern terminus of Beulah Boulevard to connect with University Drive. Furthermore, University Avenue (west of Milton) will be realigned to match up with University Drive (east of Milton). A new roundabout will be constructed where Beulah Boulevard and University Drive will intersect.

Project Update:

- Shephard-Wesnitzer, Inc. (SWI) is the design engineer.
- Eagle Mountain Construction (EMC) is the CMAR contractor for design phase services.
- City Staff presented the Bike and Pedestrian Redesign work at the October 5th City Council Meeting.
- The Design Team now working on moving design plans toward 90% level, which is the next review stage with project stakeholders.



Extent map of new Beulah and University Roadway Project – taken from 60% plans.

USGS Flagstaff Science Center Campus - Build to Suit (DESIGN PHASE)

FUND: GENERAL GOVERNMENT

Description – This project will bring new improvements to the USGS Flagstaff Science Campus, located just south of Buffalo Park. There will be two existing buildings demolished (buildings 3 and 4), and two new buildings constructed (buildings 7 and 8). One of the new buildings will be a new lab and office facility while the second building will be a new warehouse. These two new buildings will require a minimum certification from the U.S. Green Building Council’s Leadership in Energy and Environmental Design (USGBC) of “Green Building Rating System” of “LEEDTM Silver for New Construction (NC).”

Project Update:

- City Staff will present on 16 November to request the current Build-to-Suit lease not be executed.
- Construction costs have increased 70% in the past five years making the project, as originally scoped, unfeasible under the current Council-approved lease agreement.
- City Staff met with GSA Staff in mid-September to review the cost estimates and discussed potential options.
- City Staff is finalizing a memo to update the team and City leadership on where the project stands and options moving forward.



*USGS Flagstaff Science Center Campus.
Buildings to be constructed are shown in orange.
Buildings 3 and 4 (shown with red X) will be demolished.*

Coconino Estates Improvements Phase II (CONSTRUCTION PHASE)

FUND: ROAD REPAIR & STREET SAFETY & AGING WATER AND SEWER INFRASTRUCTURE REPLACEMENT PROGRAMS

Description - This is a utility and roadway improvements project located on several streets in the Coconino Estates neighborhood as seen in the map below. Improvements on the streets generally consist of replacing all existing utility and roadway infrastructure. The utility improvements include replacing the existing water and sewer mains, water and sewer services, fire hydrants, and manholes. The roadway improvements include replacing the existing asphalt roadway, replacing rolled curb with vertical curb, constructing driveway ramps at driveway entrances, and replacing select sidewalk only where it currently exists on Crescent Drive. Sidewalk will NOT be installed where it does not currently exist. For additional information visit the Project website at www.coconinoestates.com

Contractor - Standard Construction Company

Project Update:

Crescent Drive (Construction Zone #1)

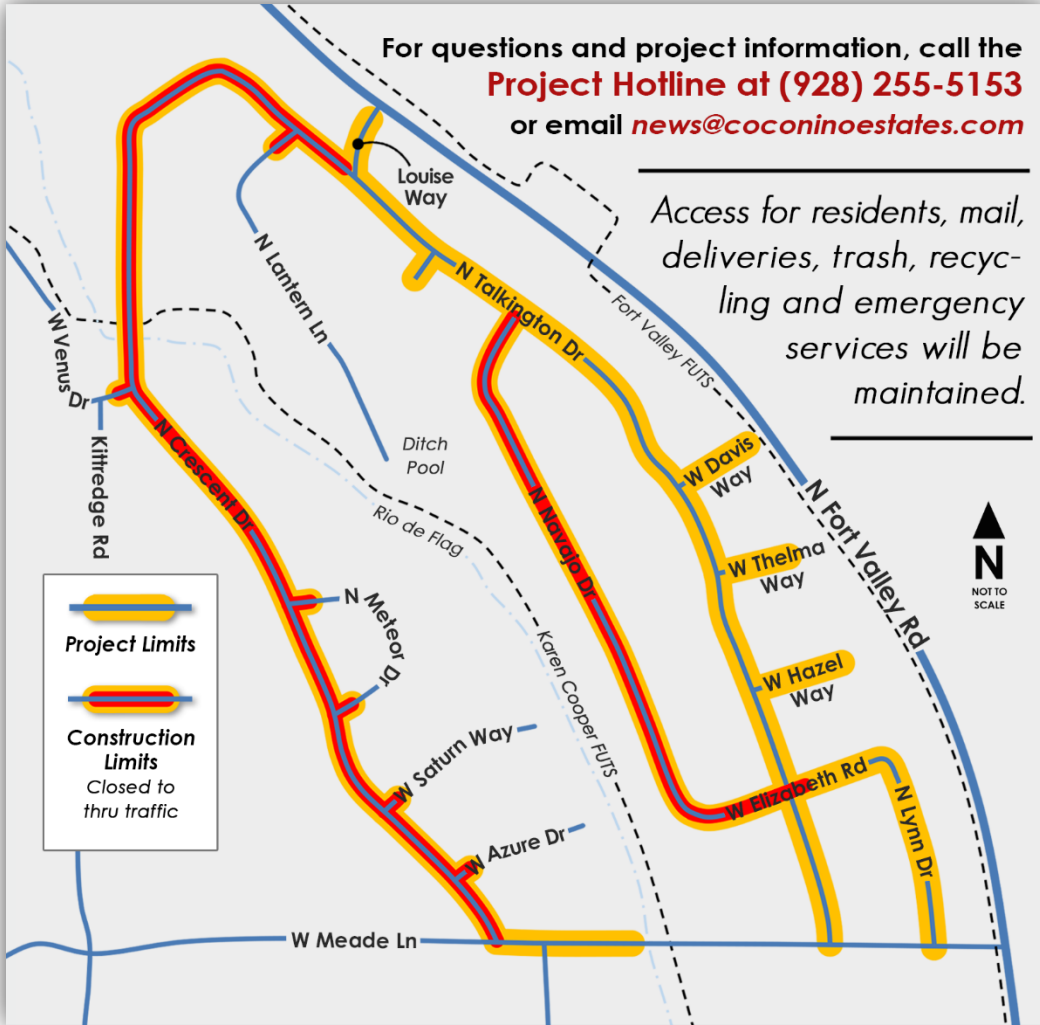
- Sewer installations on Crescent were completed the week of 10/11/2021.
- Miscellaneous construction activities and cleanup will continue on Crescent.
- Temporary asphalt patching of the trenches in the roadway will begin the week of 11/8/2021
- Water installations are anticipated to begin mid-November.
- Crescent will be closed to through traffic from Meade to the Talkington/Louise intersection, with detours posted around the closure for non-residential traffic.

Navajo Drive (Construction Zone #1)

- Sewer installations were completed the week of 11/1/2021.
- Temporary asphalt patching of the trenches in the roadway will begin the week of 11/8/2021.
- Water installations are anticipated to begin at the end of November.
- Navajo will be closed to through traffic from the Elizabeth/Talkington intersection to Talkington.



Navajo Dr. and Elizabeth Rd. corner, looking south at sewer installations on Navajo.



Coconino Estates Improvements Phase II Project Map

West Flag Improvements - David & Hutcheson (CONSTRUCTION PHASE)

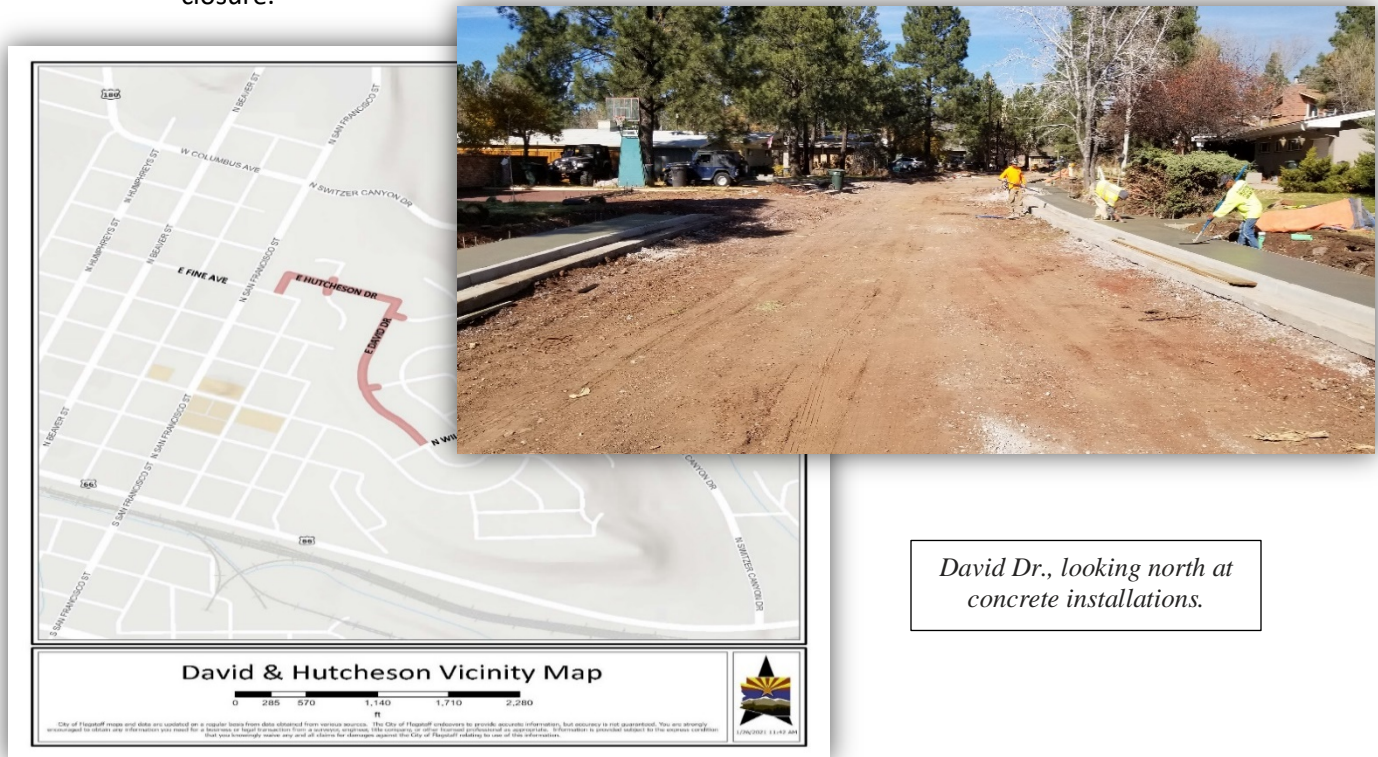
FUND: ROAD REPAIR & STREET SAFETY

Description - This is a utility and roadway improvements project located on David Drive and Hutcheson Drive as seen in the map below. The Project originally included Canyon Terrace and was bid as one project in the spring of 2020 but was pulled at the end of the bidding process given the economic and funding source uncertainties due to the COVID 19 Pandemic. It was decided to split the Project into two separate projects consisting of 1. David/Hutcheson and 2. Canyon Terrace. Improvements on the streets generally consist of replacing all existing utility and roadway infrastructure. The utility improvements include replacing the existing water and sewer mains (except for on David Drive), water and sewer services, fire hydrants, and manholes. The roadway improvements include replacing the existing asphalt roadway, replacing rolled curb with vertical curb on David Drive, and replacing select edge improvements (sidewalk, curb, and gutter). For additional information visit the Project website at www.Flagstaff.az.gov/westflagimprovements.

Contractor - Mountain High Excavating

Project Update:

- Water main, water and sewer service installations and testing are complete on David, connections remain.
- Storm drain improvements on David were completed the week of 10/25/2021.
- Roadway subgrade and subbase preparation will continue in anticipating roadway paving operations.
- Concrete curb, driveway, and sidewalk installations continue on David working north from William.
- Water and Sewer main installations on Hutcheson are complete, testing and water connections remain.
- Water and sewer services installations were completed the week of 10/25/2021 on Hutcheson.
- Gas service installations will continue by UES on Hutcheson.
- David and Hutcheson will be closed to thru traffic from William to Fine, with detours posted around the closure.



West Flag Improvements - Canyon Terrace (CONSTRUCTION PHASE)

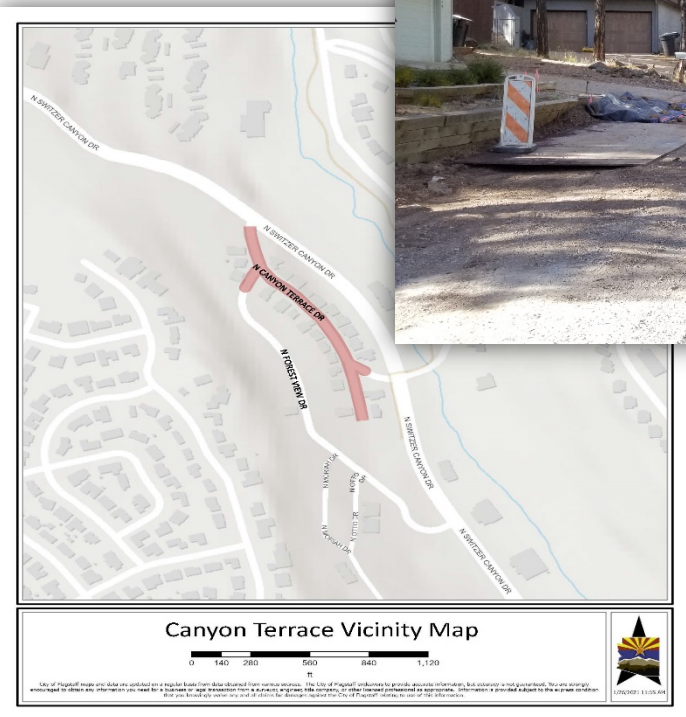
FUND: ROAD REPAIR & STREET SAFETY

Description - This is a utility and roadway improvements project located Canyon Terrace Drive as seen in the map below. The Project originally included David Drive and Hutcheson Drive and was bid as one project in the spring of 2020 but was pulled at the end of the bidding process given the economic and funding source uncertainties due to the COVID 19 Pandemic. It was decided to split the Project into two separate projects consisting of 1. David/Hutcheson and 2. Canyon Terrace. Improvements on the streets generally consist of replacing all existing utility and roadway infrastructure. The utility improvements include replacing the existing water and sewer mains, water and sewer services, fire hydrants, and manholes. The roadway improvements include replacing the existing asphalt roadway and select curb and gutter. For additional information visit the Project website at www.Flagstaff.az.gov/westflagimprovements.

Contractor - Mountain High Excavating

Project Update:

- Sewer and water main installations and testing are complete, connections remain.
- Water service installations were completed the week of 10/18/2021, private side connections remain.
- Sewer service installations were completed the week of 11/1/2021.
- Concrete driveway, curb, and valley gutter replacements will continue.
- Roadway subgrade and subbase preparation will begin in anticipating roadway paving operations.
- Work zones will vary during the service installation work.



*Canyon Terrace Dr,
looking north at service
installations.*

Coconino Estates Improvements Phase I (CONSTRUCTION PHASE)

FUND: ROAD REPAIR & STREET SAFETY

Description - This is a utility and roadway improvements project located in the Coconino Estates neighborhood on Beal Road from Rockridge to Fort Valley, Navajo Drive from Navajo Road to Murray, Whipple Road from Navajo Drive to McMillan, and Navajo Road from Navajo Drive to Fort Valley. Improvements on the streets generally consist of replacing existing infrastructure with new, including water and sewer mains, water and sewer services, fire hydrants, storm drains, streetlights, the entire asphalt roadway, and defective select edge improvements (curb & gutter, sidewalk, etc.), except for Whipple Road which will only receive a new water main. There will also be new infrastructure added consisting of underground electric lines for streetlighting and sidewalk on both sides of the street where it does not currently exist on Beal Road, Navajo Drive south of Beal, and on Navajo Road. For additional information visit the Project website at www.coconinoestates.com.

Contractor - Eagle Mountain Construction

Project Update:

A new way of communicating project information with a new project sign and banner prototype that include a QR code for the public to scan and view more information on the Project website.

Navajo Road (Construction Zone #1)

- Utility, roadway, and landscape restorations are complete.
- Final sign installations are complete.
- Navajo is open to all traffic.

Navajo Drive south of Beal (Construction Zone #2)

- Majority of improvements are complete.
- Various Punchlist Items remain.
- Navajo from Hopi to Whipple is closed to thru traffic, with detours posted around the closure.

Beal Road (Construction Zone #3)

- Utility and pavement improvements are complete from the Rio de Flag to Fort Valley.
- Concrete curb, driveway, and sidewalk improvements were completed from Navajo to Fort Valley the week of 10/4/2021.
- 10/19/2021 a preliminary punch list walkthrough was held for Beal from the Rio de Flag to Fort Valley.
- Landscape restorations were completed the week of 10/25/2021 from the Rio de Flag to Fort Valley, except for 510 Beal which will be completed when the ordered trees arrive.
- Various Punchlist Items remain on Beal from the Rio de Flag to Fort Valley.
- Construction activities on Beal, west of the Rio de Flag, will pause for the winter and will shift focus onto Navajo Drive north of Beal.
- Beal is closed to thru traffic from Aztec to Fort Valley, with detours posted around the closure.

Navajo Drive north of Beal (Construction Zone #3)

- Water main and services were installed from Beal to Whipple, testing and connections will occur at a later date.
- Sewer main and service installations will continue.
- Navajo from Hopi to Whipple is closed to thru traffic, with detours posted around the closure.

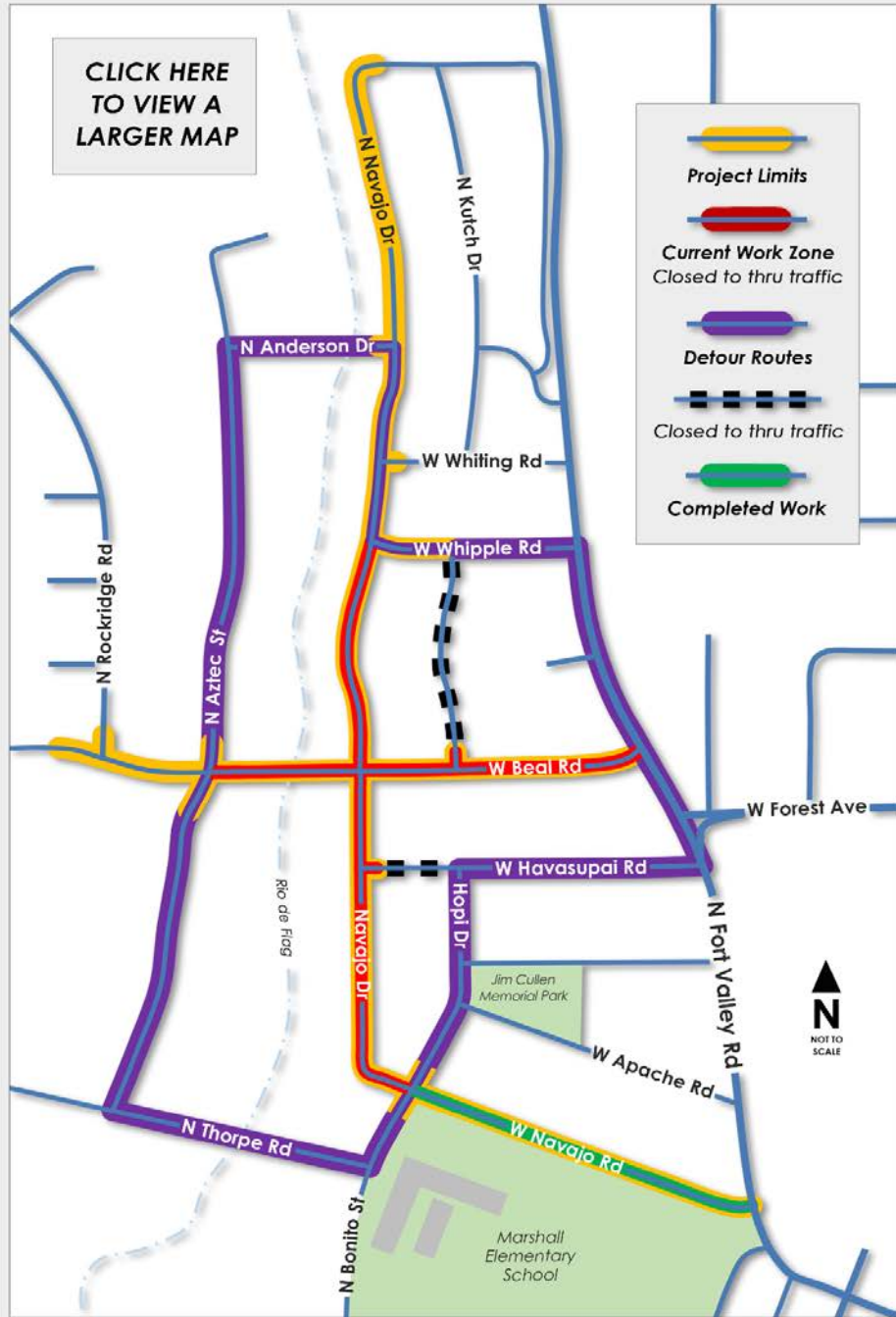


Navajo Rd. north of Beal Rd., looking north at water installations.



Navajo Rd. north of Beal Rd., looking north at sewer installations.

CLICK HERE
TO VIEW A
LARGER MAP



For general questions
and project
information, call the
**Project Hotline at
(928) 255-5153**
or email
news@coconinoestates.com



Residential access for mail, deliveries, trash,
recycling, and emergency services will be
maintained. No Mountain Line bus routes
are affected during this time.

Current road closures and detours.

Flagstaff Downtown Mile Project (PLANNING AND DESIGN PHASE)

FUND: TRANSPORTATION, STORMWATER, AGING INFRASTRUCTURE, BNSF RAILWAY, METROPLAN, GRANTS

Description - The Downtown Mile Project consists of a group of City and local agency projects located in Downtown Flagstaff and surrounding the BNSF Railway corridor. They include:

- The Rio de Flag Flood Control Project
- The Rio de Flag Pedestrian Tunnel
- The Lone Tree Overpass
- The Florence to Walnut Pedestrian Underpass
- The Mountain Line Downtown Connection Center (DCC)
- The Milton Bridge Reconstruction



The city has partnered with ADOT, BNSF Railway, Mountain Line, Amtrak, and the Army Corps of Engineers for the overall Downtown Mile Project in order to coordinate existing funding, plan construction efficiencies surrounding the BNSF corridor, investigate multimodal connectivity, and to seek grant funding for unfunded

BNSF mitigation measures to deliver these projects for the Flagstaff community. The City applied for a USDOT RAISE Planning Grant in July 2021 to fund these planning activities and the award notice is anticipated for November 2021. We are seeking \$1,980,000 in RAISE federal dollars and our matching funds will be \$1,080,000 from the City and MetroPlan, and \$100,000 from BNSF for a total budget of \$3,160,000 which will supplement existing local project funding.

The current updates for the projects included in the Downtown Mile are as follows:

Rio de Flag Flood Control Project (Design Phase)

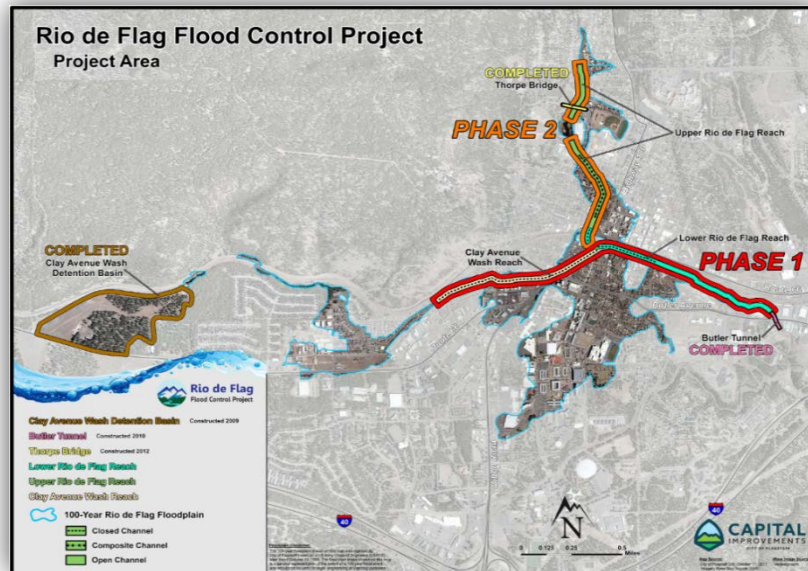
FUND: STORMWATER & AGING INFRASTRUCTURE

Description - Design consists of channel improvements along both the Rio de Flag and Clay Avenue Wash channels through central Flagstaff and includes a combination of underground concrete box culverts, open channel, and composite channel. The composite channel section has both an underground culvert to carry large volumes of water and a smaller open channel on top, which will provide an aesthetic element of flowing surface water during rainfall events. Total project length is approximately 15,000 feet.

The purpose of the Rio de Flag Flood Control Project is to remove the hazards associated with the hundred-year storm event, which include property damage, life safety concerns, and community economic impacts. From research conducted by the Army Corps, it was determined that a significant flood would damage approximately 1,500 structures valued at over \$916M and cause \$93M in economic damages, for a total impact of over \$1 Billion dollars.

Project Update:

- Work continued this month on refinement of the design plans and development of the real estate documents.
- Rio de Flag and Mountain Line DCC coordination meetings were held on September 8 and 15. Discussion items included ParkFlag lot parking and site plan coordination with the Rio de Flag design plans.
- On October 5, the City and Army Corps Rio de Flag team held an all-day meeting to review the status, schedule, and action items for the real estate acquisition.
- On October 6, an executive meeting was held between the City, Army Corps, BNSF, and Senator Kelly's office to discuss the project status and expediting the Construction and Maintenance Agreement between the City and BNSF for the Lower Reach portion of the project. Action items included reporting out on the RAISE grant award in November and the Milton Bridge concept design review meeting, which will be held October 13. The group set a tentative date for our next meeting in December 2021.
- On October 20, Community Development staff presented the mitigation of the historic Mineral Belt Trestle that is located on the Phoenix Avenue lot. The trestle will be removed by the RDF construction and an interpretive display will be installed on site. Reuse of the materials is not recommended due to the condition of the trestle and contamination from hazardous materials.
- On October 27, the City's consultant submitted the Phase I real estate segment maps to the Army Corps, and they are working on the revised legal descriptions for an early December submittal.



Rio de Flag Pedestrian Tunnel (Design Phase)

FUND: STORMWATER & AGING INFRASTRUCTURE

Description - The Rio de Flag Pedestrian Tunnel will be constructed along with the flood control channel improvements under the BNSF corridor. The undercrossing will also be constructed under the ADOT Route 66 corridor. This will be a FUTS facility which will link north downtown and City Hall with the Southside neighborhood and the future Mountain Line DCC. Project progress will be reported in the Rio de Flag Flood Control Project item above.

Lone Tree Overpass Project (DESIGN PHASE)

FUND: TRANSPORTATION

Description - The Lone Tree Overpass Project will provide a grade-separated crossing over the future Rio de Flag drainage and the BNSF Railway corridor from Butler Avenue to Route 66. Funding for this project is provided through voter approved bonds as designated in the 2018 Proposition 420. The project will also include improvements from Butler south to Sawmill Road, which will be funded by Proposition 419. The project will be delivered via the Design-Build process and the team includes Ames as the contractor and WSP as the prime design consultant.

Project Update:

- Property acquisition is proceeding with appraisals, relocations, and offers to property owners. On October 5, Council approved relocation activities for property acquisition.
- On October 5, the project Draft Design Report was submitted to City staff for review and comment.
- On October 19, City staff and WSP presented a project update to City Council that included a project overview, typical street sections, draft intersections, and aesthetics. The design team will be revising the intersection alternatives to maximize bicycle and pedestrian accessibility and safety and reduction of vehicular lanes. The team will present these revised options at a future Council meeting in December or January.
- On October 25, the team met with Beautification staff and the designer to discuss development of the bridge aesthetics, development of a community focus group for the design, and integrating an artistic consultant.



Florence to Walnut Pedestrian Tunnel (Design Phase)

FUND: TRANSPORTATION

Description - Design consists of a FUTS undercrossing of the BNSF corridor that will link Walnut Street and Florence Street in the La Plaza Vieja neighborhood. This project is in the approved La Plaza Vieja Neighborhood Specific Plan and is designed and funded. Upon investigation of the final rail relocation, the design will most likely need to be modified.

Milton Bridge Reconstruction (Planning Phase)

FUND: STORMWATER, AGING INFRASTRUCTURE, AND TRANSPORTATION

Description - The City is currently investigating reconstruction of the existing Milton Bridge structure to accommodate a third mainline track for BNSF and to provide a standard bridge clearance. The current clearance is 13'9" and the standard height is 16'6". The realignment and reconstruction will allow the City to construct the structures for both the Florence to Walnut pedestrian undercrossing and the Rio de Flag flood way and pedestrian tunnel while minimizing operational impacts and construction risk to the BNSF mainline. A minimum of two active tracks are required to be maintained for BNSF operations.

Project Update:

- On October 13, the City, BNSF, ADOT, Army Corps, Amtrak, and Mountain Line met to discuss the bridge realignment alternatives. Three alternatives were presented. One was discarded due to cost and restrictions it would place on the Milton Corridor width and the future pedestrian tunnels.
- Two alternatives will be further investigated in Phase II of the study, which will provide refined design to 30%, cost estimating, construction phasing, and utility relocation.

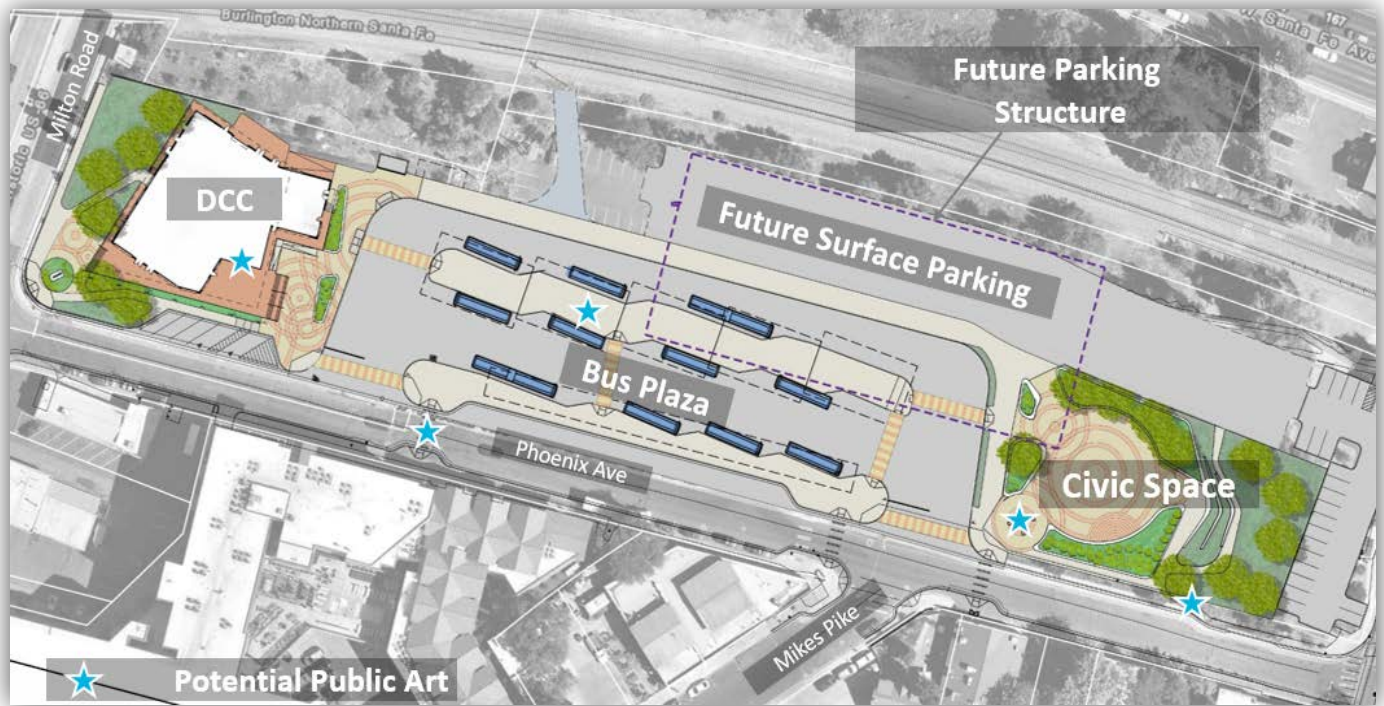
Mountain Line Downtown Connection Center (Design Phase)

FUND: GRANT

Description - The Downtown Connection Center is included in the Downtown Mile project report due to the City's partnership with Mountain Line for developing the site and the opportunity to plan the facility with multimodal connections with the rest of the Downtown Mile projects. There are also current discussions for future co-location of the Amtrak Station.

Project Update:

- Mountain Line and Amtrak attended the October 13 meeting to review the findings of the Milton Bridge Phase I study.
- The City is facilitating coordination of the DCC site improvements with the future Rio de Flag construction.



Old Municipal Court Demolition and Temporary Parking Lot (Construction Phase)

FUND: COURT USER FEES AND BOND FUNDS

Description - The old Municipal Court Facility and Prosecutor's buildings located at 15 N. Beaver Street are slated for demolition and the parcel will be improved to provide temporary public parking. These parcels will be considered for future development, with input from the Downtown Visioning Plan that is underway.

Project Update:

- Demolition of the site is complete.
- KCS will be working on site grading and asphalt paving the week of November 8.
- ParkFlag will manage the future parking stalls on the new lot for public parking.



Old Municipal Court Building Demolition

Spruce Wash – Cedar to Dortha and Dortha Inlet (Design Phase)

FUND: STORMWATER

Description - Design consists of improvements to the Spruce Wash Channel from Cedar Avenue to south of Dortha Avenue. This work is in response to the damage that occurred during the 2021 monsoon flooding from the Museum Fire burn scar.

- 90% plans are in review with City staff.
- The JOC contractor (Tiffany) is reviewing the plans and developing the scope and fee for the construction of the channel improvements.
- Real Estate staff is investigating necessary property rights.
- Construction completion is anticipated prior to the 2022 monsoon season.

Library Entrance (DESIGN PHASE)

FUND: BBB - BEAUTIFICATION

Description – Project to bring Library Entrance into ADA compliance with new handicap ramp and new overall vision for the entrance. Public art will be incorporated into project and an artist is being brought onto the design team. Project includes upgrades to landscaping, handicap-accessible parking, parking lot, and hardscape.

Project Update:

- The project team, working with the artist, fabricator, and Risk Management, has addressed the safety concerns brought up at City Council.
- The project team will continue work on project phasing details and maintaining access to the Library throughout construction.
- The project is incorporating IT Fiber conduits to support the Broadband Master Plan and future connections.
- The project is approaching 100% design completion.



Library Entrance Project-Rendering of selected concept plan

East Route 66 and El Paso Flagstaff Waterline Extension (CONSTRUCTION PHASE)

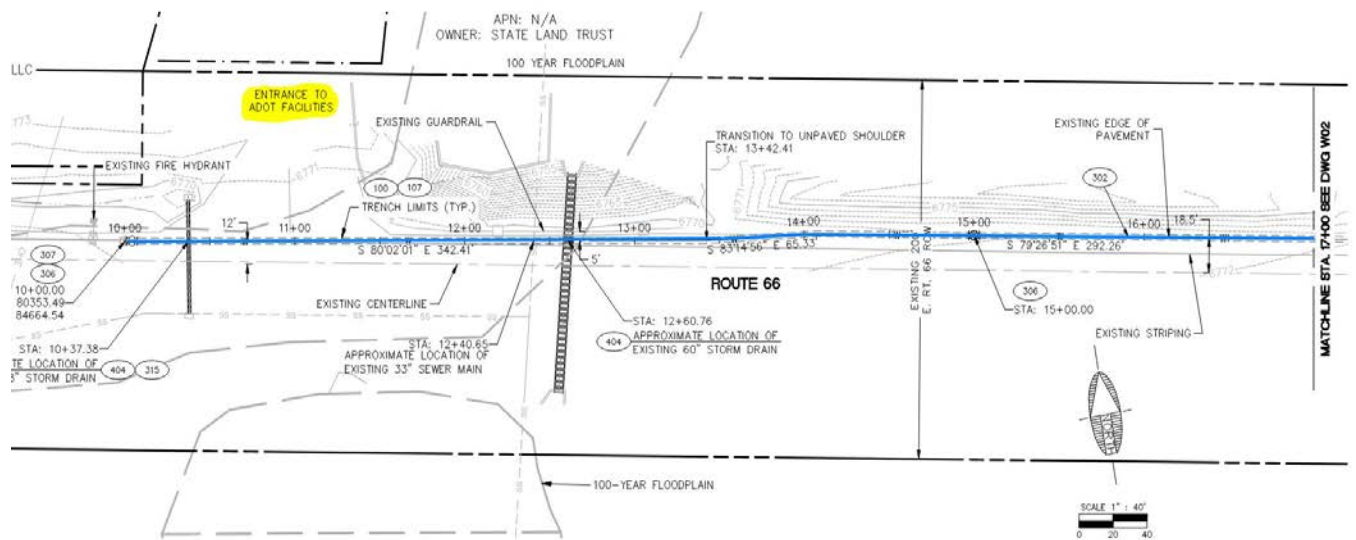
FUND: AGING INFRASTRUCTURE

Description – A utility improvements project that extends the 12" ductile iron waterline approximately 2,450 linear feet from approximately the intersection of Test Dr. and Rt. 66 to the intersection of El Paso Flagstaff Rd. The waterline extension continues north, up El Paso Flagstaff Road towards the Wildcat Hill Wastewater Treatment plant, with approximately 1,600 linear feet of new 8" ductile iron waterline. The project also calls for a repaving of El Paso Flagstaff Road for the extents of the waterline extension.

Contractor – Scholz Contracting, LLC

Project Update:

- Purchasing is working with Scholz Contracting on contractual documents before issuing a Notice to Proceed Date. The project is expected to start in Spring of 2022 with expected completion in Summer of 2022.
- The construction contract was awarded at the October 5th Council meeting, and Scholz Contracting has been notified of the award.



Approved Civil Plans, blue line represents the starting point of the waterline extension that begins just west of the ADOT facilities driveway and Rt 66 intersection.

Huntington Waterline Replacement (CONSTRUCTION PHASE)

FUND: AGING INFRASTRUCTURE

Description - The Project consists of installing 3,000 LF of new 16" ductile iron waterline, and associated roadway improvements. Included in the project will be new water services, fire hydrants and air release valves. The existing waterline in this area is over 60 years old. This project is part of the City's ongoing aging water infrastructure replacement program.

Contractor - Sellers and Sons, Inc.

Project Update:

- Project work has started, the awarded contractor, Sellers and Sons, has mobilized equipment and materials to the site. Potholing investigative work and clearing of the site has begun.
- The contractor continues to install the new 16" DIP water line, from Ponderosa Parkway heading east.
- Utility work within Ponderosa Parkway was completed on October 22, 2021. The final pavement section for Ponderosa Parkway will be placed on October 29, 2021.
- Replacement of the water services at the U-Haul parcel has begun and is expected to be complete the week of November 5, 2021.
- Phase testing of a portion of the new 16" DIP waterline will take place the week of November 1, 2021. Pressure testing has been completed and passed. Disinfection testing is now in progress and will be completed the week of November 8th.
- The contractor and City continue to coordinate with property owners for the removal of obstructions.
- Completion of the project is anticipated by spring 2022.



Installation of the 16" waterline

Route 66 ADOT Bridge Replacement Project (CONSTRUCTION PHASE)

FUND: ARIZONA DEPARTMENT OF TRANSPORTATION

Description – Project consists of removing the existing concrete bridge that crosses the Rio de Flag channel and replacing with a precast box girder bridge with precast abutments. Included with the project are roadway approach slabs on either side of the new bridge, channel improvements with bank protection and revegetation mitigation measures. The purpose is to provide a new Route 66 bridge crossing at the Rio de Flag to serve Route 66/Milton.

Project Update:

- The ADOT contractor, FNF Construction, is contracted to complete the work by October 2021.
- The over excavation beneath the new bridge will be completed in the spring 2022 due to delays with the delivery of materials related to the soil nail stabilization process. Soil excavation and backfill continue to secure the existing channel and to process the removal of the stockpiled material in front of City Hall before winter 2021.
- The restoration of the City Hall lawn, including turf placement and irrigation repairs will be completed in the spring of 2022.
- The concrete waste slab will remain until next spring, but will be removed before turf and irrigation work resumes.
- A winter shut down of the project, as approved by ADOT, began November 5, 2021 and project work is expected to resume mid-March 2022.
- ADOT continues to update City staff on construction matters and will release information to the public through media releases.
- The project work for cleanup and removal of obstructions continues.
- The contractor has cleared all lane closures, no restrictions are in place. When work continues, implementation of lane closures for EB or WB Route 66 will continue until work on the bridge is completed. ADOT will be monitoring the traffic and will make alterations as needed.



Bridge structure with new paint

Phoenix Avenue Bridge and Waterline Replacement (Construction PHASE)

FUND: STORMWATER & AGING INFRASTRUCTURE

Description - The project will replace the Rio de Flag box culvert (which runs beneath Phoenix Avenue and the Zani building, and functions as the Phoenix Ave bridge) with the appropriate conveyance structure and will upsize the current waterline to a 12" waterline in Phoenix Avenue from Mikes Pike to Beaver Street. Phoenix Avenue will be reprofiled and lowered to achieve a standard street section, roadway surface drainage issues will be addressed, edge improvements will be made as needed and the roadway will be repaved. The existing waterline in this area is over 114 years old. This project is part of the City's ongoing aging water infrastructure replacement program.

Project Update:

- Both Northside and Southside sidewalks along Phoenix Avenue are anticipated to be open within the first week of December with the goal to move the Zani business back into their building by December 15th.
- New water and sewer components of the project are anticipated to be complete by November 22nd with paving scheduled on November 24th.
- Bridge footings, walls and deck are anticipated to be completed by the end of November.
- Rebar placement for the new bridge began on October 8th with concrete pour on October 11th.
- Our Geotechnical Engineer made a site visit on October 5th for a visual inspection of the bedrock and has approved it for bearing capacity for the new bridge footings.
- Demolition of the old bridge structure and excavation to bedrock for the new bridge footings was completed on October 4th
- UniSource's existing gas main in Phoenix Avenue was found to be too shallow and in conflict with the new waterline on September 29th. A significant relocation of that main has begun and will take approximately three weeks.



Phoenix Avenue Bridge, looking at the start of rebar placement for the new walls and installation of the steel casing for the new waterline.

Wildcat Hill Wastewater Treatment Plant (WHWTP) Digester Complex (DESIGN PHASE)

FUND: WATER SERVICES-SEWER

Description – Project includes the design and construction of two 60-ft concrete anaerobic digesters with a digester control building and gas handling system. The digester control building would include new boilers, heat exchangers, digested sludge pumps, and other appurtenances to support the increased capacity of the new digester facilities. The Wildcat Hill WTP treats residual solids from both the Rio De Flag and Wildcat facilities. These new digesters will increase solids treatment train capacity to accommodate the solids produced from the treatment at both facilities.

Project Update:

- Carollo Engineers has been selected as the Design Consultant; design contract negotiations to follow.
- Delivery method will be Design-Bid-Build.
- Design is targeted for 2022 and construction is anticipated for 2023-2024.



Existing Wildcat Plant, red circles represent proposed location of the two new digesters

Lockett/Fourth Roundabout (DESIGN PHASE)

FUND: HSIP GRANT

Description – Project consists of the design and construction of a new roundabout at the Lockett-Cedar-Fourth Street intersection. Project is funded by an HSIP Grant, with supplementary funding from City of Flagstaff. Project design and construction to be administered by ADOT. The new roundabout will improve safety and operations for vehicles, pedestrians and bicyclists in this busy intersection. Project design and construction to be administered by ADOT.

Project Update:

- The project team has completed reviewing a pre-60% plan submittal.
- Environmental clearance has been received.
- Project team is in discussions regarding allowable closures and maintenance of traffic options.
- The project team is working through the 60% design comment resolution process.



Selected Design Alternative- Lockett-Cedar-Fourth Intersection