



CITY COUNCIL - DIVISION INTRODUCTION

# Fire Department

FEBRUARY 9, 2021



- Overview of Division
- Organizational Chart and Staffing Overview
- Budget Information
- Look at FY21
- Other



### MISSION

*Ensuring exceptional customer service to the community, visitors, and surrounding region.*

### VISION

*Dedicated to life safety and fire protection services*

### VALUES

*INTEGRITY*

*HONESTY*

*RESPECT*

*TRUST*

*Protecting values At Risk*



# Strategic Partnerships

## Summit Fire & Medical District.

- Joint Management Agreement
- Functional Consolidation of Command Staff/Administration
- Staffing Efficiency
- Operational Capacity
- Cost Avoidance



# Department Data

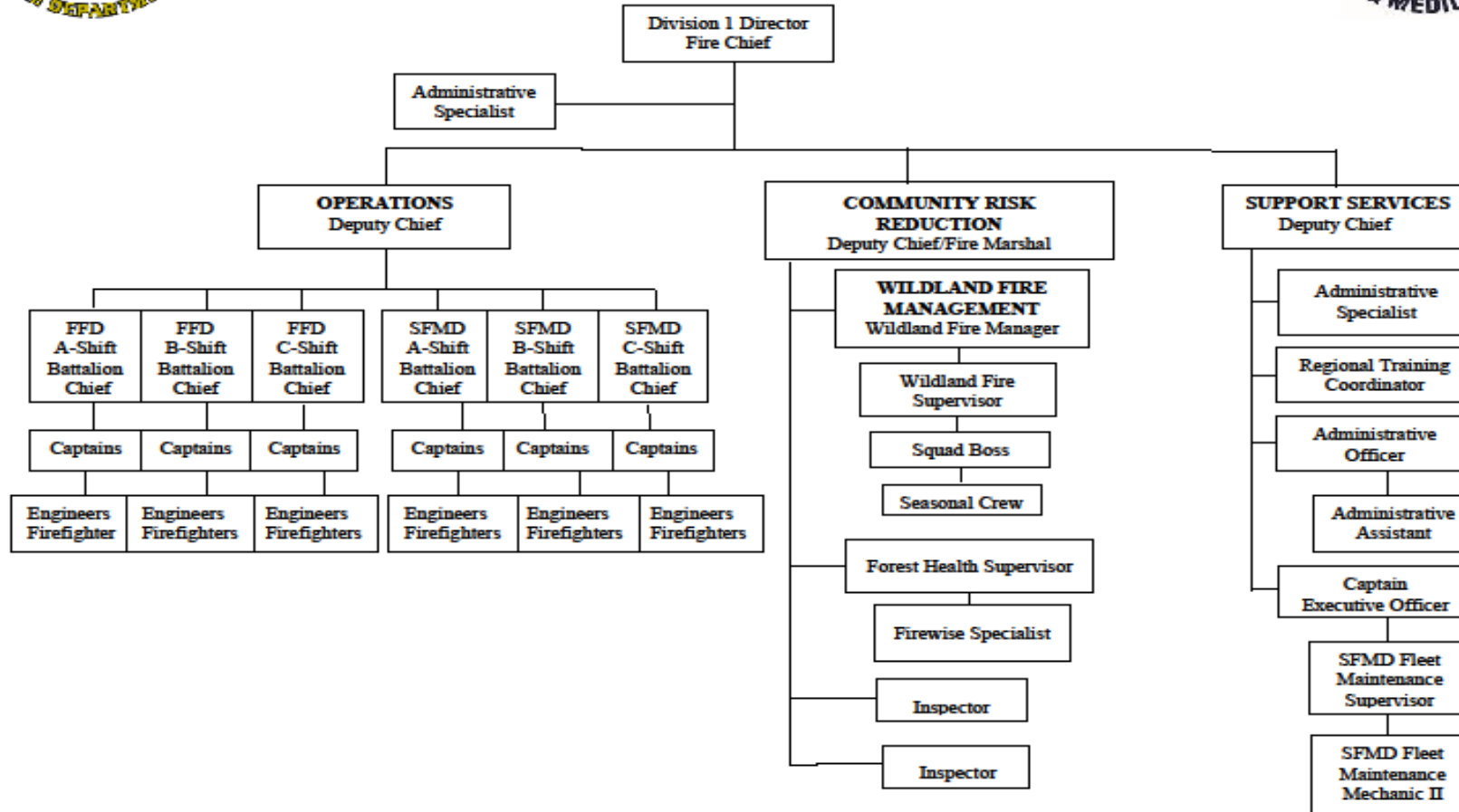


## Response Area

- Population served: 77,590 (2020 US census city/town estimate)
- Approx. 64 Sq. Miles in the largest Ponderosa Pine forest in the world
- Six All-Risk stations (7 front line units + 1 Battalion Chief)
  - 6 All-Risk Engines with minimum staffing of 3 personnel
  - 1 All-Risk Rescue with minimum staffing of 2 personnel
- One Wildfire Management (WFM) station
  - 5- Fulltime staff & 10-15 season Crew members
- Total full-time personnel = 94  
(Administrative staff, Line personnel, WFM & Prevention)



**FLAGSTAFF FIRE DEPARTMENT / SUMMIT FIRE & MEDICAL DISTRICT ORGANIZATION CHART – 2021**





# Community Risk Reduction-CRR/ Deputy Chief Jerry Bills

The Flagstaff Fire Department Community Risk Reduction (CRR) section works to provide a safe community for the citizens and visitors of Flagstaff by applying the principles of engineering, enforcement, and education.

- Fire Prevention
- Wildfire Management
- Emergency Management

# CRR/Wildland Fire

- Catastrophic wildfire is a significant threat to the City of Flagstaff's social, economic and environmental well-being.
- The Wildland Fire Management (WFM) program accounts for this threat by following 5 strategic pillars through a continuous year-round cycle: prevention, preparedness, hazard mitigation, response, and recovery.



- This cycle remains mission focused through guidance from City leadership, the Climate Adaptation and Action Plan, the Wildfire Urban Interface Code, national wildfire response qualification standards, and community and stakeholder input.
- WFM staff achieve our mission by collaborating with multiple departments within the City. WFM is working with Sustainability to develop equitable smoke mitigation strategies and with Water Services to continue wildfire risk reduction efforts in the Upper Lake Mary Watershed.



# CRR/Wildland Fire

- The \$10M Flagstaff Watershed Protection Project is designed to prevent \$573 million to \$1.2 billion in costs (CWPP)
- Since 1996, WFM has supported over 120K acres of forest treatments implemented in the Greater Flagstaff Area including over 12K acres within the City of Flagstaff and 6K acres of Flagstaff Watershed Protection Project. WFM treats 400+ acres annually within Flagstaff: public and private land thinning, debris removal, and prescribed fire/controlled burns.





# CRR/Fire Prevention

## Development Services

The CRR/Prevention Section ensures that the requirements of the 2018 Edition of the IFC and National Fire Protection Association (NFPA) standards are engineered into new construction projects in our community.

## Occupancy Inspections

Code enforcement activities focus on ensuring that existing buildings and facilities are operated and maintained to governing codes providing a safe environment for the employees, citizens, and visitors of Flagstaff and for emergency response personnel

More.....Special Events, Public Education, and Operational Permits



# CRR/Fire Prevention

## By the Numbers

- 934 Inspections By CRR staff
- 562 Inspections By Fire Crews
- 153 Public Education Contacts
- 83 Fire Cause and Origin Investigations

*Above are 2019 numbers. 2020 numbers are well below our typical yearly stats due to Covid.*



## CRR/Emergency Management

Using the four pillars of Emergency Management, Planning, Response, Mitigation and Recovery we coordinate these functions to ensure we are prepared for man-made and natural disasters.

In cooperation with the Coconino County Emergency Management Office, we continually use the functions above to be prepared for the next event.



# Operations-OPS/Deputy Chief Patrick Staskey

The Flagstaff Fire Department is responsible for providing immediate response to Fires, Emergency Medical Services, Special Operations, and Wildfire Suppression; ensuring a safe community for the citizens and visitors of Flagstaff and the surrounding region.

- Fires
- Emergency Medical Services
- Special Operations
- Wildfire Suppression



# Operations/FIRE

- Six Fire Stations *distributed* across the City; housing seven emergency response units.
- Cross-trained All Risk Firefighters, Emergency Medical Technicians, and Paramedics.
- Additional cross trained staff include:
  - Hazardous Materials Response
  - Technical Rescue
  - Fire Investigation
- Three Shifts (A,B,C)
  - 24 hour shifts
  - 2 days on / 4 days off.



## Operations/EMS

- Emergency Medical System
  - Emergency Medical Dispatch
  - Fire based EMS First Response (Flagstaff FD)
  - Private Medical Transport (Guardian Medical Transport)
- Fast Response to life threatening emergencies within the community.
- Highest level of patient care in the prehospital environment.



# Admin-Support Services/Deputy Chief Mark Wilson

- 1 Deputy Chief and 1 Administrative Specialist
- Oversees the FFD budget
- Responsible for contractual and invoicing needs
- Responsible for policy and administrative needs
- Responsible for all logistical and support needs to run the following:
  - Six Fire Stations (seven front line units)
  - One wildfire management station
  - Fire Training Facility & modular classroom
  - Maintenance and replacement of 35+ vehicles/apparatus



# FFD Budget

## FY 21 Budget Information - \$500k estimated ongoing base deficit

- Division Final Budget: \$16,016,951
  - Personnel: \$14,375,124 (\*PSPRS reductions not included in FY21)
  - Capital: \$595,000
  - Contractual/Commodities base: \$1,045,890
- Wildfire Management \$1.12M
  - Personnel \$903,480
  - Contractual/Commodities base: \$134,641
- Grants: \$4,072,618 (placeholders) - Awarded over \$1.5M
  - Greater Flagstaff Regional Officer/Leadership Academy - \$481,949
  - Self-Contained Breathing equipment replacement - \$516,000
  - Miscellaneous Safety equipment - \$75,000
  - Wildfire Management grants - \$400,000



## 2021 Initiatives

- Provide adequate numbers of paramedics
- Restore a full-time Regional Training Coordinator- (50% funded by regional partners) - ***Funded as 1x for 6th year and cut to 50% for recession***
- Add a 24/7 Rescue unit (promote six Captains to supervise unit)
- Alternative Response Unit – behavioral/social health response
- Upgrade our obsolete reporting software platform
- Replace a 22-year-old Fire Engine
- Replace a 21-year-old Wildfire Engine
- Funding for a 2022 Spring Regional Recruit Academy
- Station & Response Analysis (through Impact Fees)



# Year to Year Trends

## 2010-2020

**Calls for service:** 60% increase (Avg of 6% per year)

2010 = (9,375)

2013 = (10,912)

2018 = (14,270)

2020 = (15,712)

**Staffing:** 7% decrease from all-time high = FY2009/10 (101.5)

FY2009/10 = (101.5 FTE's)

FY2013/14 = (85 FTE's) - Loss of 10 FF's, DC, BC, Inspector, 3.5 WFM

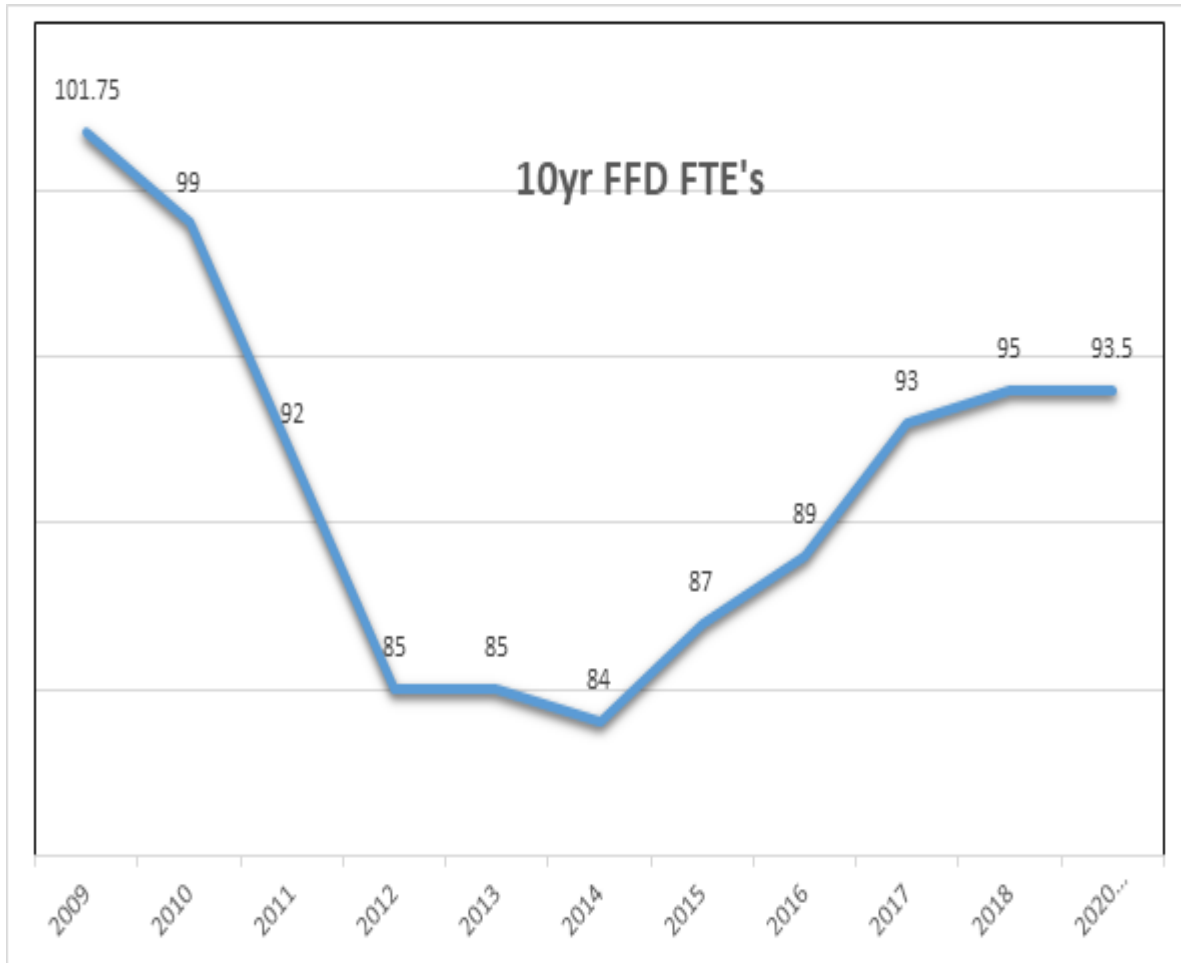
FY2018/19 = (95 FTE's) – 6 SAFER Grant FF's, 1 DC, RTO, 1-CART, Inspector

FY2020/21 = (93.5 FTE's) - Loss of CART FTE, 50% of RTO

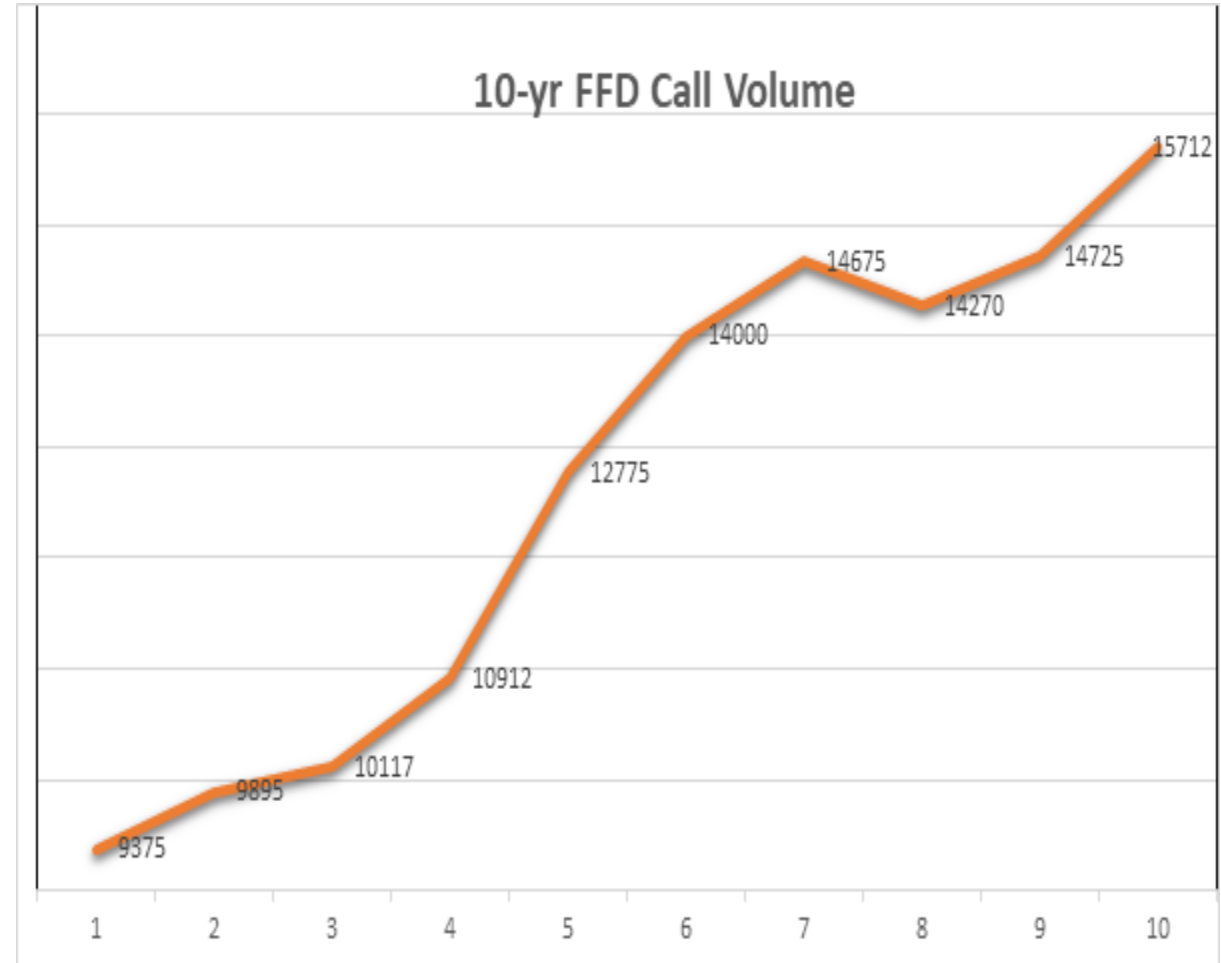


# Firefighter FTE vs. Call Volume

## Total FTE's (2010-2020)



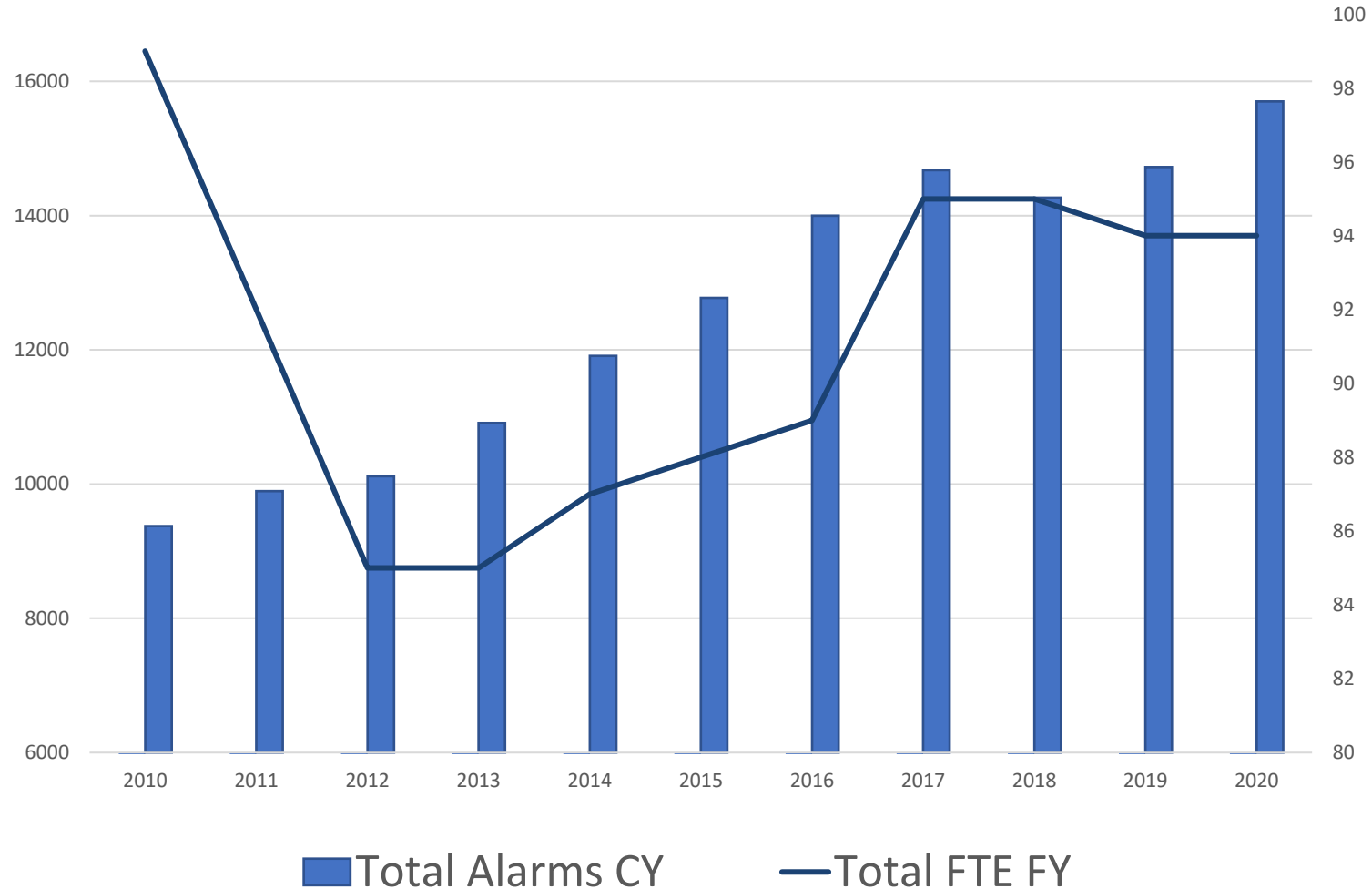
## Call Volume (2010-2020)





# Summary of Impacts to Flag Fire

Staffing remains 7% Below Pre-Great Recession  
Levels-Call Volume Increased 60%





# Capital Expenditures

## FLEET Needs within FFD

- ***Fleet Inventory Summary: Recession pushed replacement back on average 5 years. Approved for one type 1 Engine this FY by FLEET.***  
***Needs: 16 units beyond recommend replacement in next five years:***
  - *4 - Type 1 Pumper Engines - \$3.2M*
  - *2 – Quints (aerial device) – \$2.5M*
  - *2 - Water Tenders - \$800k*
  - *2 - Wildfire Type 3 Engines - \$800k*
  - *1 - Rescue - \$275k*
  - *5 - Staff Vehicles - \$275k*
- ***Total FLEET needs in next five years: \$7.8M***



# Capital Expenditures

## Other Capital Needs within FFD

- Self-Contained Breathing Equipment – Received \$515k in grants funds in 2020/21 - ***Needs: \$250k to get remaining equipment***
- New Heart Monitors - (5-year lease replacement cycle) - ***Needs: \$400k to replace current 5-year equipment***
- Radio Replacement - ***Needs: \$550k to replace older unit and station radios purchased with previous bond.***
- Stations - ***Study for new Station #7 on John Wesley Powell Blvd.***
  - FWP Corridor/Station 4 – ***Needs: \$4M to relocate***
  - Admin – If moved from City Hall – ***Needs: \$1.5M*** (on St #7/4 property)
  - Completion of Training Facility from 2006 Bond – ***Needs: \$1.5M***



# Summary of FFD



- Mission Focused
- People Driven
- Always Adapting
- Increasing Service Demands
- Resource Scarce
- Aging infrastructure
- Compaction and related concerns.



**Thank you**