

Cross- Connection Code Changes

Industrial Pretreatment



Summary of 7-03-01- 0015 changes

- Reorganization of information
- Removal of redundant and vague language
- Removal requirement section





What is Cross-Connection?

Cross-Connection program:

- Cross Connection program consists of Backflow prevention devices on service connection to customers to prevent hazards from entering our distribution system.
- Typically found on businesses and some residential, if a hazard is found
- Approximately 2700 backflow devices within City limits

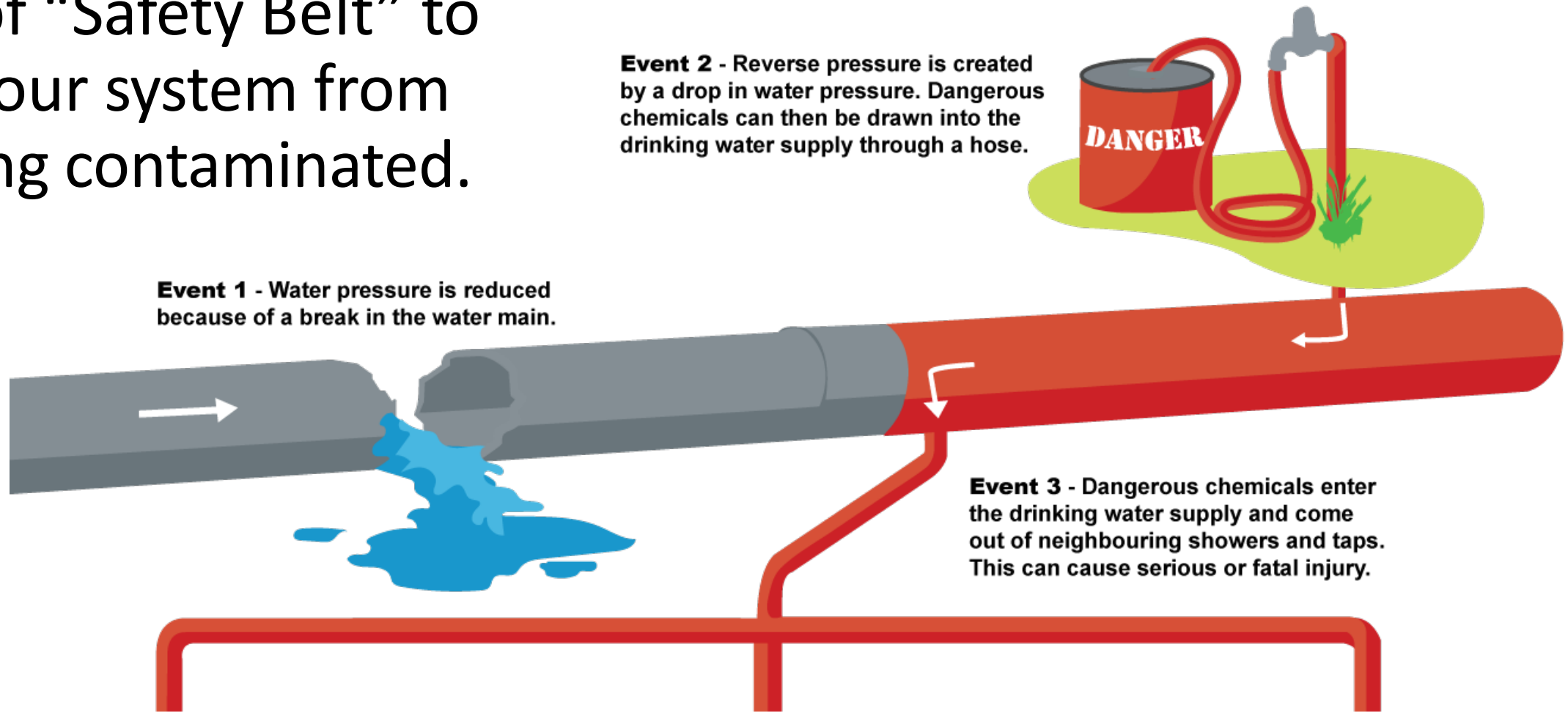




Why We Have Cross-Connection

Cross-Connection:

- A type of “Safety Belt” to protect our system from becoming contaminated.



Event 1 - Water pressure is reduced because of a break in the water main.

Event 2 - Reverse pressure is created by a drop in water pressure. Dangerous chemicals can then be drawn into the drinking water supply through a hose.

Event 3 - Dangerous chemicals enter the drinking water supply and come out of neighbouring showers and taps. This can cause serious or fatal injury.



Changes Cross-Connection code

Code changes:

- Current program is in compliance with federal and state code
- Remove vague language.
 - i.e. “generally”, “normally would”, etc
- Require backflow assemblies be tested before using water on construction sites.





Cross-Connection code

Removal requirement:

- Removed redundant language through out the code about removing backflow preventers.
- Guidelines for removal process
 - Contact the City
 - Removing as close as possible to main service
 - Deactivation process





Who Will This Impact

Commercial and Industrial

- Current installations and new construction

Residential

- Class 1 & 2 fire sprinkler systems exemption for residents





What is Next?

90-day Public outreach plan:

- Water commission meeting – November 19th
- Water bill message – on January bills
- Virtual public comment meeting on Feb. 4th
- Information on Water Services website and in newspaper
- Emails to testers and plumbers



Questions?

