



Snow Operations  
Readiness Report  
2021-2022 Season

---



# Presentation Objectives

**Provide the City Council and the community with a Public Works and PROSE winter storm readiness report.**

1. Forecasting and Storm Preparations
2. Streets - Winter Operations
3. Parks – Winter Operations
4. Post Storm Operations
5. Community Expectations and Parking Ordinance



# Storm Preparations



## Winter Storm Event

- NWS and all-weather briefings
- On-call supervisors and weather watch
- Weather and Road Conditions
- Resource deployment
  - Safety, Timing and Temperature
- Agency communication and reporting
- Snow operations are 24/7 with 12-hour shifts

# Streets Fleet and Equipment

- 20 - 10-wheel Plow/Spreader Box Trucks
- 4 - 6-wheel Plow/Spreader Box Trucks
- 10 - Road Graders
- 3 - Front End Loaders
- 1 - Truck mounted Snow Thrower
- 3 - Tractor-trailers for hauling operations





# Streets Personnel Preparations

Snow operations are 24/7 with 12-hour shifts

4 - Full Time Operations Supervisors

19 - Full Time Streets Equipment Operators

4-6 - CDL operators from other sections

6-10 - On-Call community CDL operators

1 - Administrative Specialist

Minimum shift staffing and existing vacancies



# Snow Operations - Streets

First Priority Routes – Open and Passable at all times

- Main Routes and Arterials
- Major Hills
- Downtown Core
- NAIPTA Bus Routes

Second Priority Routes –

- Residential Streets and Cul-de-sacs

*Plowing and Ice Control for duration of the storm event.*



# Parks Section - Readiness

- Same forecasting and snow season readiness as our partners in Streets with season predictions and resource analytics
- All staffing and fleet same as previous fiscal years
  - 15 equipment operators, 10 hand shovelers
  - Recruiting vacancies currently and hopeful for fully staffed
- Added FUTS segments to routes, adjustments
- Courtesy berm relocation program review and implementation



# Parks Fleet and Equipment

- 10 – Plows on Trucks
- 1 – Toolcat
- 1 – Cinder spreader
- 6 – Tractors and Backhoes
- 4 – Snow throwers
- Many shovels!



# Snow Operations - Parks

- Operation is 24/7 with 12-hour shifts when applicable
  - Shifts typically 4 AM, 6 AM and 9 AM start times
  - 2 AM hauling time for downtown/Heritage Square
- Priorities of routes, in order – over 300 assignments
  - Parking lots of City-owned buildings – 63 parking lots
  - City-owned sidewalks and FUTS system (concrete/asphalt sections)
  - Heritage Square
  - Dedicated City Alleys
  - Courtesy Berm Service, when applicable
  - Entrances to FUTS – non aggregate only
  - Parking lots at park locations
  - Stairways, walkways, skate tracks and BMX track in City parks

## Expectations:

- When snow accumulates, Parks begins operation on parking lots, sidewalks, FUTS sections, alleys
- Operate on shifts with safety and efficiency in-mind, utilize an internally created snow app
- Once Streets has plowed residential roads, the courtesy berm program begins for approved citizens

# Snow Operations for our Parks Section



# Snow Operations - Parks

Parks Snow Operations Dashboard - 2021 - 2022 Season



Percent Completed



Last update: a few seconds ago

Completed



Last update: a few seconds ago

Outstanding Assignments



Last update: a few seconds ago

In Progress



Last update: a few seconds ago

Unassigned



Last update: a few seconds ago

Declined



Last update: a few seconds ago

Paused



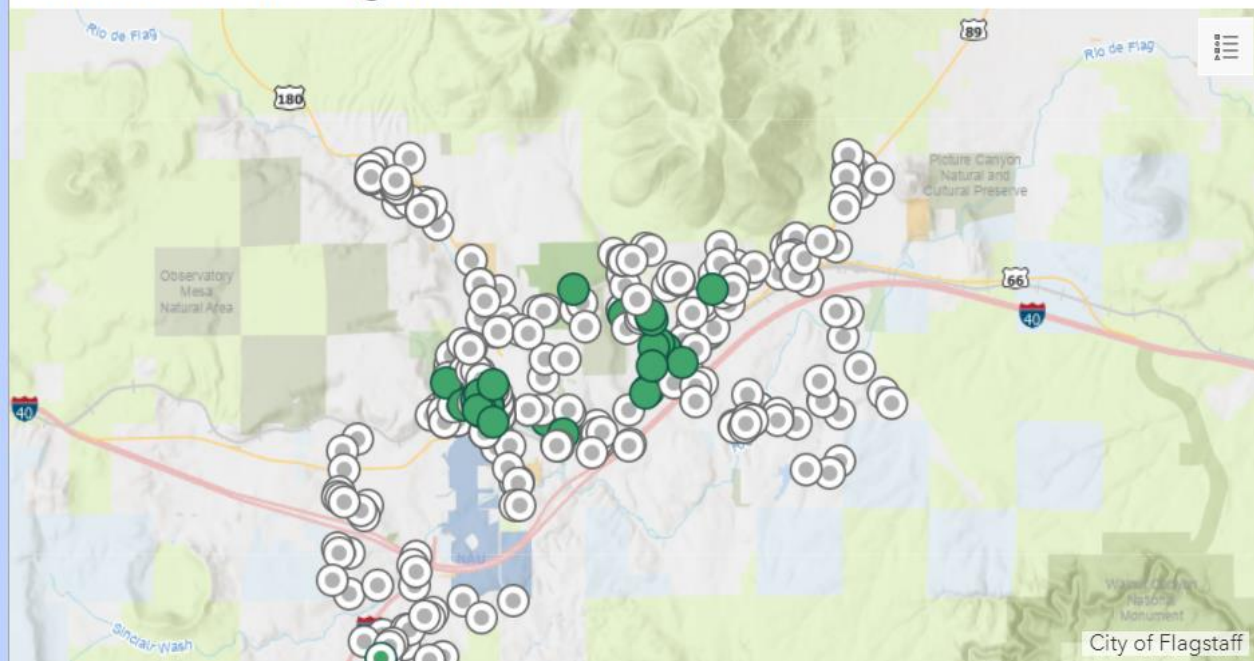
Last update: a few seconds ago

Canceled



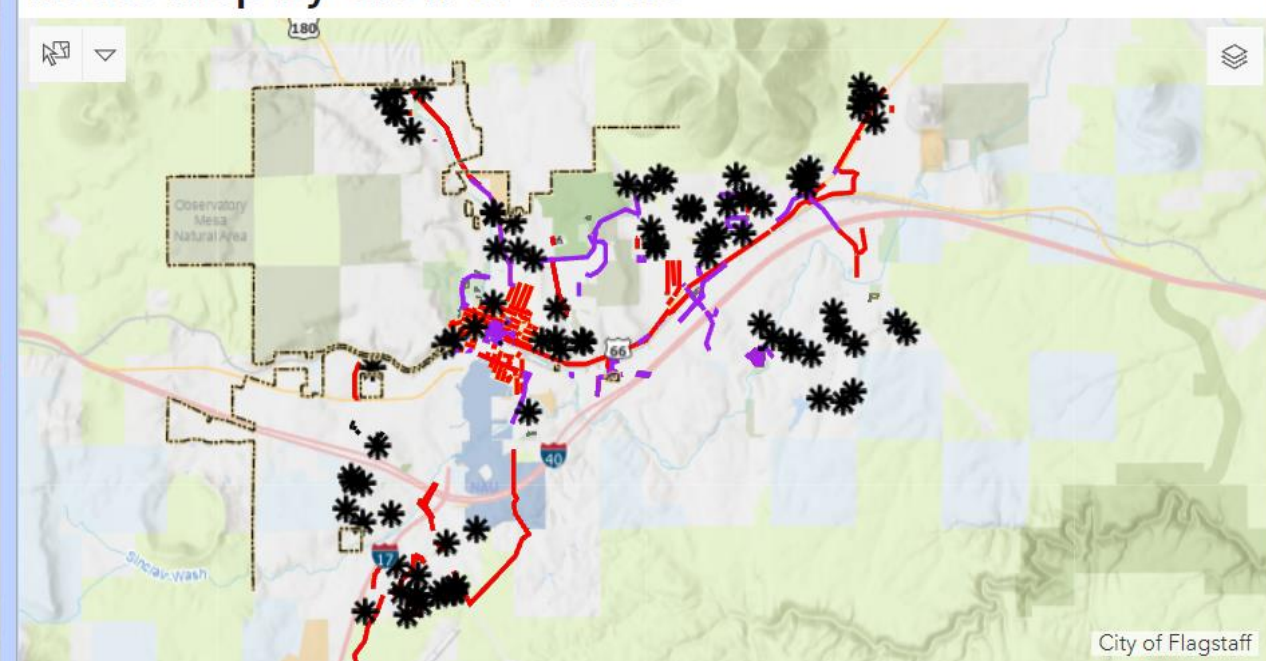
Last update: a few seconds ago

## Current Storm Assignments



City of Flagstaff

## Route Map by Crew or Vehicle



City of Flagstaff



# Separated Bike Lane Pilot

Butler and South Beaver –

Separated Bike Lanes pilot project are under construction and expected by the end of the year.

Snow Operations will change in the areas;

- Pilot program, staff will be nimble and learn

- Monitoring of operational successes and public

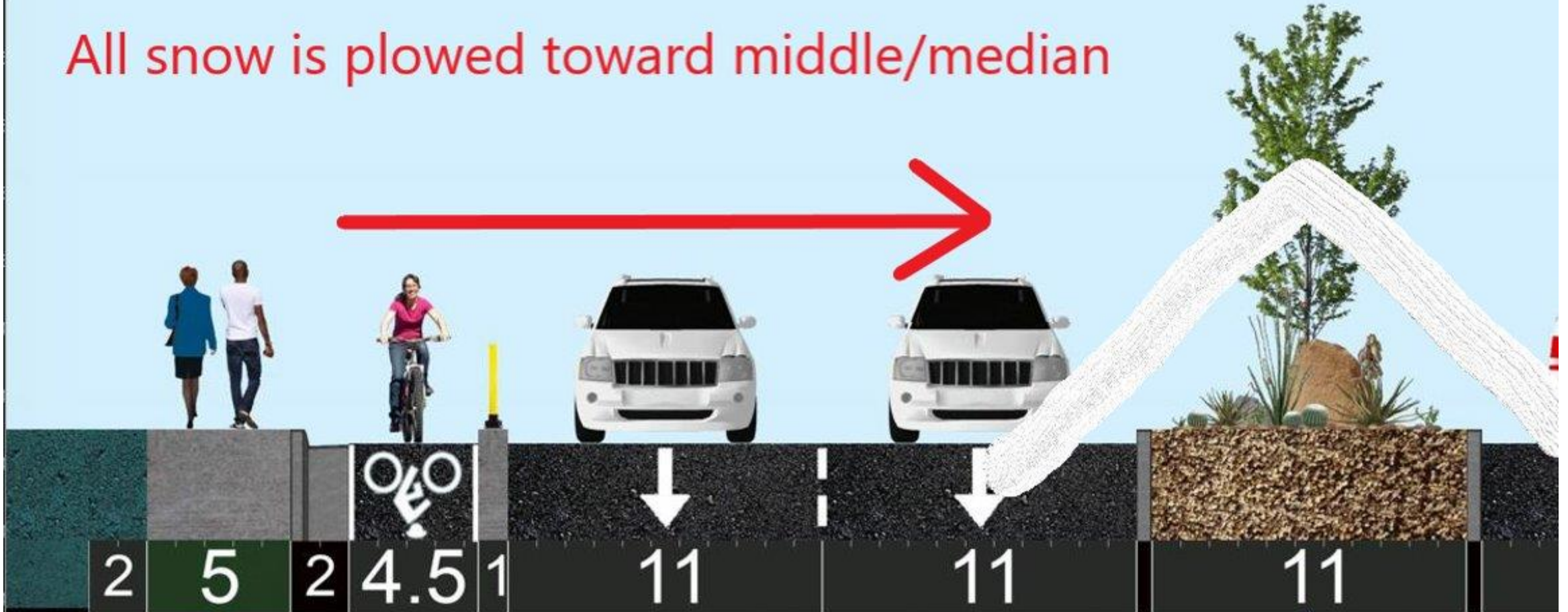
feedback.



# Separated Bike Lane Pilot



All snow is plowed toward middle/median





# Post Storm Operations

## Community-wide

- Periodic hauling operations – Downtown Parking
- Snow removal – Separated Bike Lane Pilot
- Cul-de-sac stacking and removal
- Intersection clean up and push back
- Signage and damage repairs
- Prolonged Ice control and trouble spots
- Ice Cinder sweeping

Priority is bike lanes and mains.



# Post Storm Operations

## Community-wide

- Periodic hauling operations – Downtown Parking
- Cul-de-sac stacking and removal
- Intersection clean up and push back
- Signage and damage repairs
- Prolonged Ice control and trouble spots
- Ice Cinder sweeping

Priority is bike lanes and mains.



# Public Operations Assistance

- Limit travel as much as possible
- Provide safe distances and stay alert
- Winter Parking Ordinance

**NO Parking on City Streets November 1<sup>st</sup> to April 1<sup>st</sup>**

Citywide – Midnight to 7:00 AM

N. Downtown Area\* – 3:00 AM to 7:00 AM

- Museum Flood mitigation areas
- City Web site for more information



Questions?

