

APPENDIX D

**Interior Photographs of the David Babbitt House
(319 North Beaver Street)**

Section 1 of 6



Figure D-1. The front screen door surrounded by the original simple-drop wood siding.



Figure D-2. Detail of the wood siding from the original late nineteenth century construction of the residence.



Figure D-3. Detail of the exterior of the cant bay window of the master bedroom enclosed by the porch (after 1958).



Figure D-4. View of the French doors of the enclosed porch (toward North Beaver Street).



Figure D-5. View of the screen door and upper transom (note the doorbell).



Figure D-6. Close-up of the doorbell, which is the same as that seen behind Emma Babbitt in the photograph of her on the porch (see Figure B-7, Appendix B).



Figure D-7. Close-up view of the upper transom and decorative cap molding above.



Figure D-8. Detail of the original brass floor strip at the base of the front door.



Figure D-9. Close-up view of the door threshold, original to the home.



Figure D-10. View of the interior of the enclosed porch (east side, which faces North Beaver Street).



Figure D-11. View of the interior corner of the enclosed porch built after 1958.



Figure D-12. View of the south side of the enclosed porch (toward the formal living room).



Figure D-13. View of the west end of the enclosed porch which was used by the retreat as storage.



Figure D-14. Detail of the original windows that are seen behind David Babbitt in the photograph of him on the porch as it was built by 1901 (see Figure B-8, Appendix B).



Figure D-15. Detail of the porch that now encloses part of the cant bay window of the formal living room.



Figure D-16. Close-up view of the enclosed porch with cant bay window and the roof that was placed over it after 1958.



Figure D-17. Close-up view of the original simple-drop siding still visible today.



Figure D-18. View back toward the corner of the enclosed porch.



Figure D-19. View back toward the front door and entryway as seen from the enclosed porch (the drywall divider and door are modern).



Figure D-20. View of the ornately carved front door framed by the original 1886 simple-drop wood siding and door trim.



Figure D-21. View of the front entryway as seen from the sitting room.



Figure D-22. View of the front door, likely dating to the original construction of the residence in 1886.



Figure D-23. Detail of the single upper glass panel.



Figure D-24. Detail of the elegantly carved top rail and stiles.



Figure D-25. Close-up view of the decorative door details.



Figure D-26. Detail of the carved paneling.

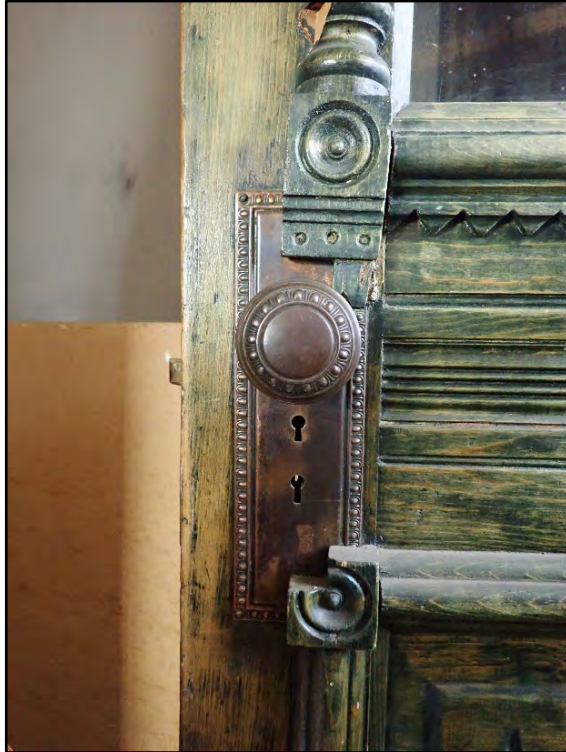


Figure D-27. Close-up view of the embossed doorknob and rose complemented by the decorative wood carving of the door.



Figure D-28. Detail of the carved lower panel of the front door.



Figure D-29. Interior view of the front door, with its less ornate detailing.



Figure D-30. Lower portion of the front entryway door.



Figure D-31. Detail of the embossed copper doorknob and small key opening as seen on the interior of the front door.



Figure D-32. View of the transom over the front door, with the decorative door trim.

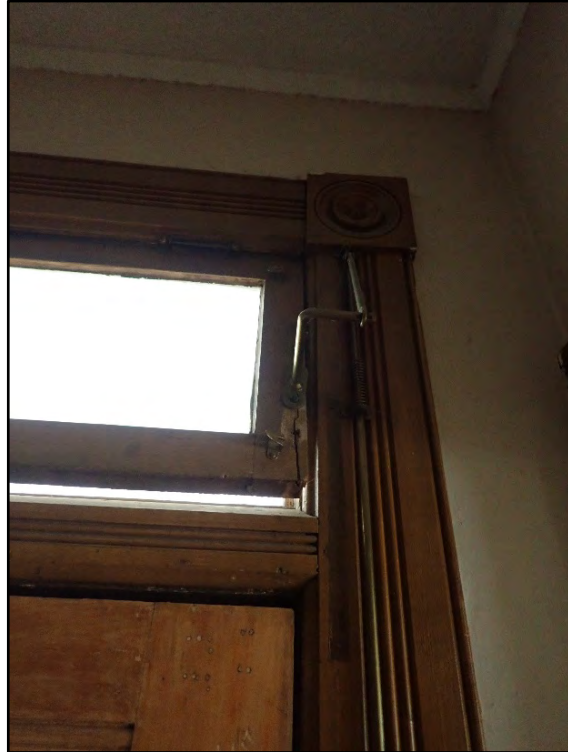


Figure D-33. Detail of the corner of the opening mechanism for the transom window.



Figure D-34. Close-up view of the opening mechanism for the transom window.



Figure D-35. Detail of the bottom of the rod used to open the transom as well as the light switches by the front door.



Figure D-36. Detail of the original copper weatherstripping along the edge of the door jamb and plinth block.

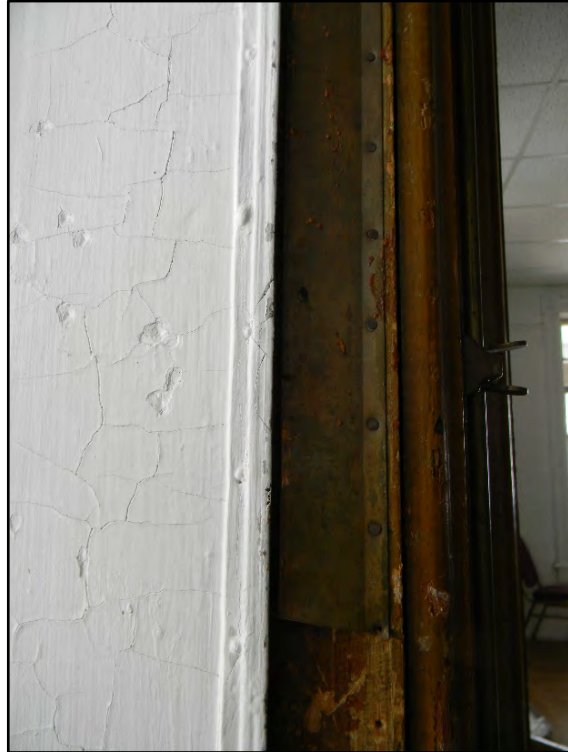


Figure D-37. Close-up view of the original copper weatherstripping still in place around the front door.



Figure D-38. Detail of the decorative plinth blocks and baseboards over the original hardwood floors near the front door and sitting room.



Figure D-39. View of the original decorative radiator adjacent to the front door.

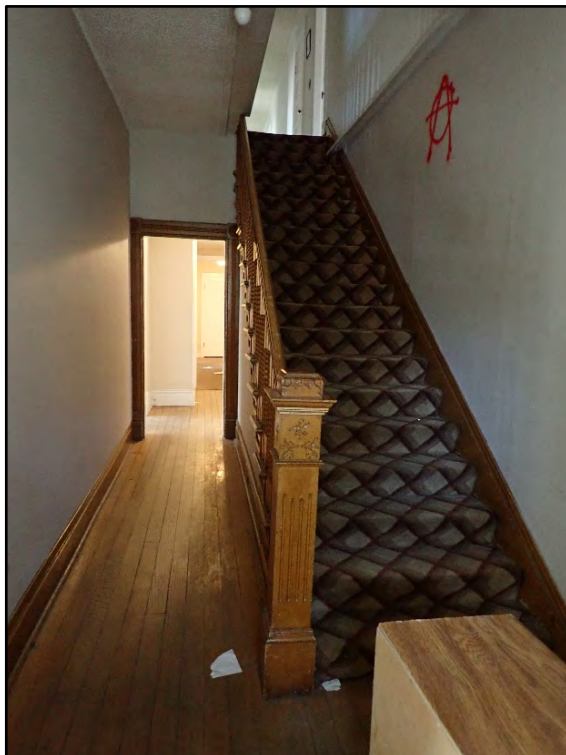


Figure D-40. Overview of the entrance hall and main staircase to the second floor.



Figure D-41. View of the newel post at the base of the main staircase.



Figure D-42. Detail of the top of the newel post with its decorative carvings.



Figure D-43. Close-up view of the carved newel cap.



Figure D-44. View of the second floor as seen from midway up the main staircase.



Figure D-45. Detail of the balustrades up the stairs and along the second floor.



Figure D-46. View of the balustrade (with newel post at each side) on the second floor.

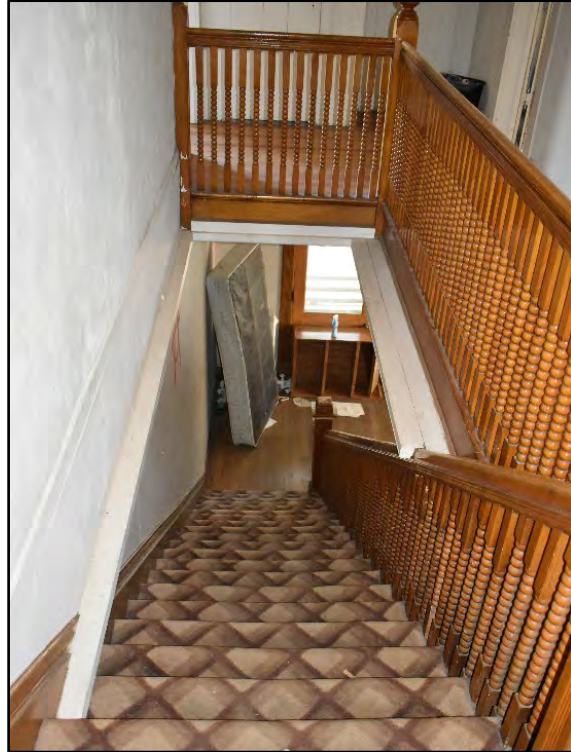


Figure D-47. View down the main staircase as seen from the second floor.



Figure D-48. View of the front door and entrance hall as seen from the main staircase.



Figure D-49. Close-up view of the decorative newel drop and scalloped molding on the ceiling around the opening for the main staircase (note the stippled ceiling).



Figure D-50. One solitary drop light hangs from the ceiling, with a decorative frosted finish.



Figure D-51. View of the face stringerboard, turned balusters, and railing of the main staircase.



Figure D-52. Alternative view of the wood detailing of the balustrade and staircase.



Figure D-53. Detail of the decorative wood details, including carved wood appliques.

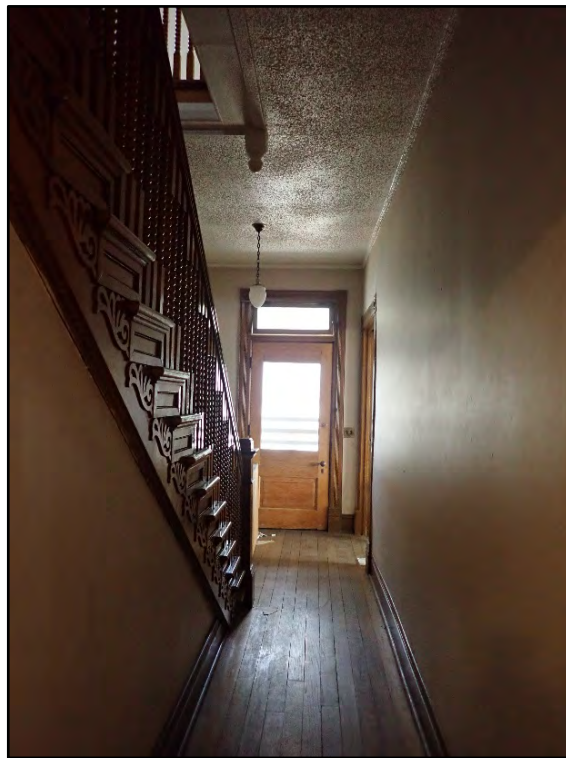


Figure D-54. View of the entrance hall toward the front door.



Figure D-55. View of the lovely detailing of the wood pocket door of the sitting room adjacent to the front door of the residence.



Figure D-56. Detail of the upper portion of the pocket door, with the carved wood side casings and corner blocks.

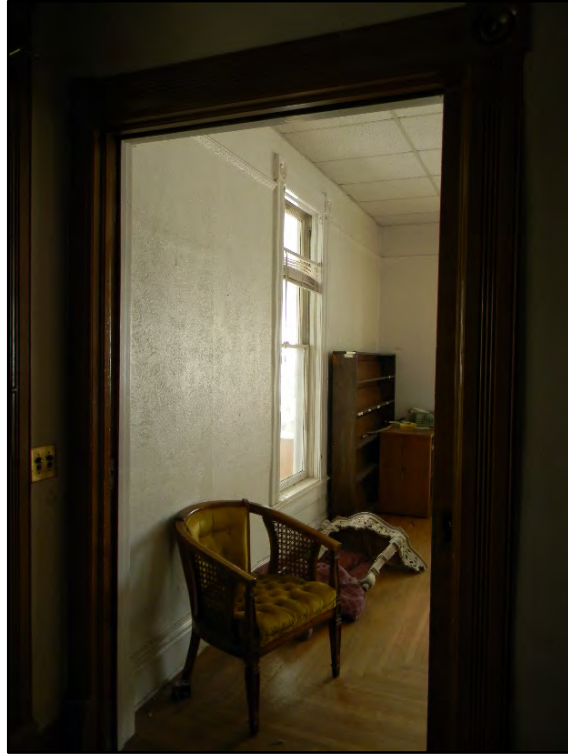


Figure D-57. A view peeking into the sitting room from the entrance hall.



Figure D-58. The west side of the sitting room, with fireplace.



Figure D-59. Close-up view of the pocket door hardware, showing that even the smallest of details matter.



Figure D-60. View of the front door as seen from the sitting room.

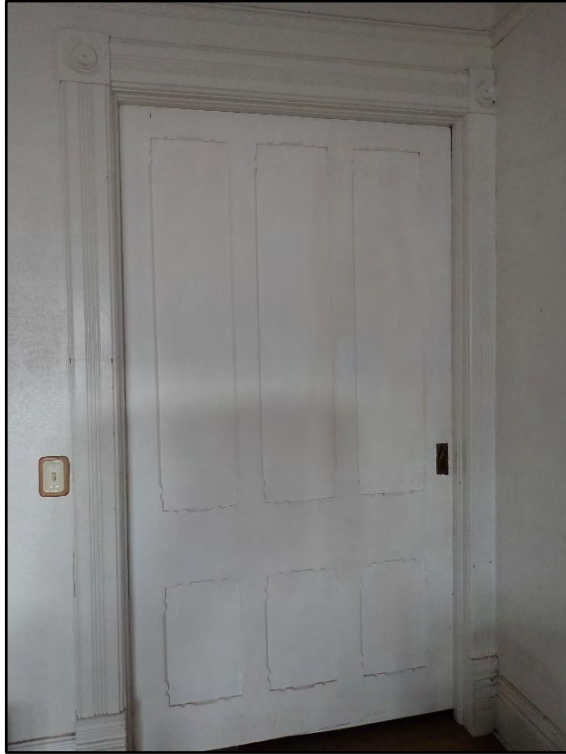


Figure D-61. View of the pocket door to the entrance hall in the sitting room.



Figure D-62. Detail of the pocket door's scalloped recessed panels and door trim.



Figure D-63. Detail of the pocket door's decorative side casings and corner blocks, with the strip of ornate picture molding on the wall above.



Figure D-64. Alternative view of the other upper corner of the door jamb and picture molding in the sitting room.

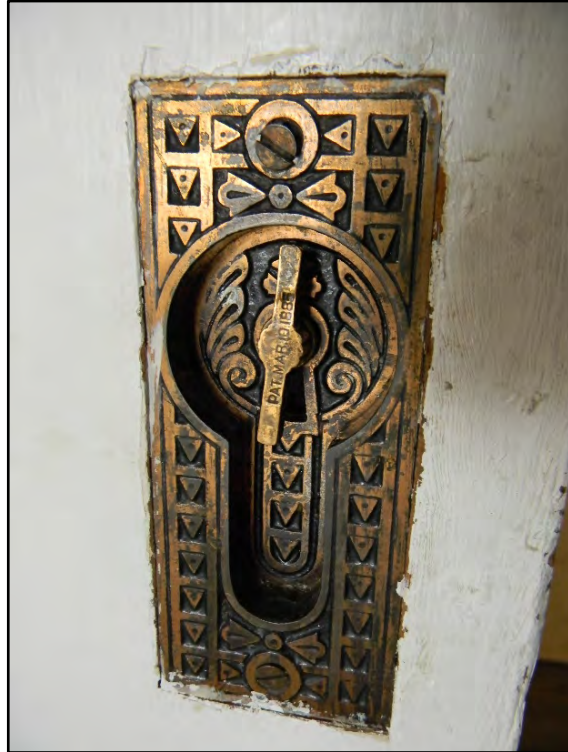


Figure D-65. Another example of how small details were important, as seen in the door latch for the pocket door of the sitting room.



Figure D-66. Overview of the sitting room as seen from the door to the entrance hall.



Figure D-67. Overview of the sitting room as seen from the northwest corner near the fireplace.



Figure D-68. Interior of the sitting room showing the once-exterior windows on the right, in front of which David Babbitt sat with his boys and Clarence Spellmire sat with his boys on his porch (see Figure B-8 in Appendix B).



Figure D-69. View of the decorative radiator still present in the sitting room.



Figure D-70. View through the very same windows that are visible in Figure B-8 in Appendix B.



Figure D-71. Detail of the decorative window jambs and corner blocks in the sitting room.



Figure D-72. Overview of the deteriorating fireplace in the sitting room.



Figure D-73. Detail of the construction and workmanship of the sitting room fireplace.



Figure D-74. View of the sophisticated patterning of wood flooring seen in the sitting room next to the fireplace.



Figure D-75. Another view of the hardwood floor pattern in the sitting room, where even the floors were fancy.



Figure D-76. Overview of the other pocket door in the sitting room, this one to the formal living room.



Figure D-77. A peek through the copper keyhole plate.



Figure D-78. View into the formal living room from the sitting room.



Figure D-79. Interior of the formal living room.



Figure D-80. View of the cottage windows.



Figure D-81. Interior of the formal living room (likely originally constructed as a formal dining room between 1895 and 1901).



Figure D-82. View of the pocket door to the sitting room and the modern replacement door to the hall.



Figure D-83. Pocket door to the sitting room as seen from the formal living room.



Figure D-84. Close-up of the lock plate of pocket door to the sitting room.



Figure D-85. Overview of the interior of the formal living room.



Figure D-86. View of the door to the dining room (left), the built-in cabinet and door to the hall, and fireplace (right).



Figure D-87. Modern door that has replaced the original door to the hall.



Figure D-88. Detail of the wood wainscoting in the formal living room.



Figure D-89. View of the northeast corner of the formal living room.



Figure D-90. View of the cottage windows with canted walls and the pocket door to the sitting room (right).



Figure D-91. Oblique view of the built-in cabinet and door to the kitchen.



Figure D-92. The door to the dining room (left) and built-in cabinet.



Figure D-93. Open doors of the built-in cabinet showing the workmanship of the interior.

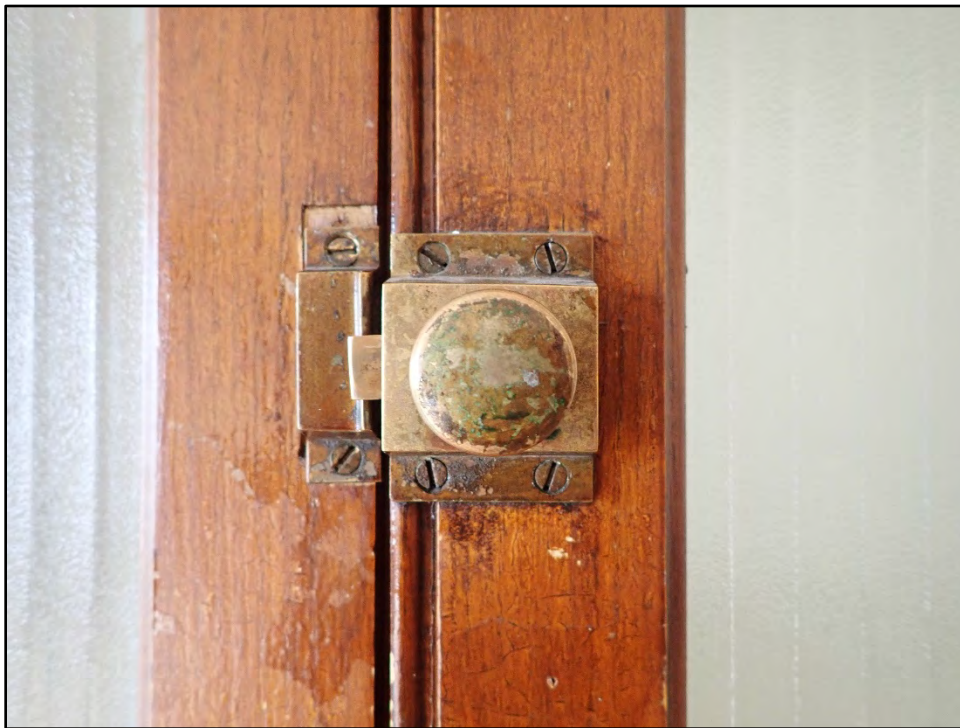


Figure D-94. Close-up view of the cabinet.



Figure D-95. Side view of the door to the dining room, with the other door to the hallway in the background.



Figure D-96. Overview of the interior of the formal living room, with the doors to the main hallway on either side of the fireplace.



Figure D-97. View of the door to the sitting room and canted wall of the main windows.



Figure D-98. View of the canted bay window in the formal living room (likely constructed as a formal dining room when built by 1901).



Figure D-99. Alternative view of the cant bay window.



Figure D-100. Detail of the woodworking and trim of the cant bay window.



Figure D-101. Detail of the decorative radiator.



Figure D-102. Light has shown through these windows for upwards of 120 years.



Figure D-103. The fireplace of the formal living room.



Figure D-104. View of the ornate trim, tile hearth and elegant bronze details of the fireplace.



Figure D-105. Detail of the top of the fireplace inset.



Figure D-106. Close-up view of the Classical scene of the fireplace.



Figure D-107. Detail of the Celtic design around the Mediterranean-inspired fire screen.



Figure D-108. Close-up of the fire screen.



Figure D-109. Interior of the fireplace with the fire screen removed.



Figure D-110. One of the cast figures of the bronze mantel.



Figure D-111. Close-up of the decorative detail of the fireplace.



Figure D-112. Close-up of more of the Celtic motifs.



Figure D-113. Close-up of one of the decorative motifs cast in bronze (dolphins, perhaps?).



Figure D-114. Detail of the other cast-bronze figure.



Figure D-115. Detail of the wood panel between the fireplace and the door jamb.



Figure D-116. Profile view of the fireplace.