

APPENDIX D

**Interior Photographs of the David Babbitt House
(319 North Beaver Street)**

Section 2 of 6

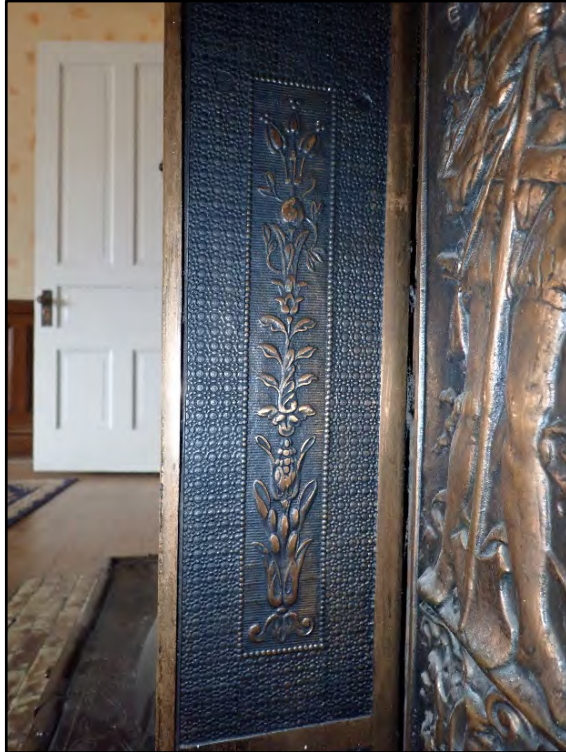


Figure D-117. Detail of additional floral details.



Figure D-118. Detail of the crown molding and curved ceiling of the formal living room.



Figure D-119. Close-up of the lighting sconce in the formal living room.



Figure D-120. Close-up of a floor outlet that may be original to the room.



Figure D-121. Electrical outlet in the floor of the formal living room (likely also original).

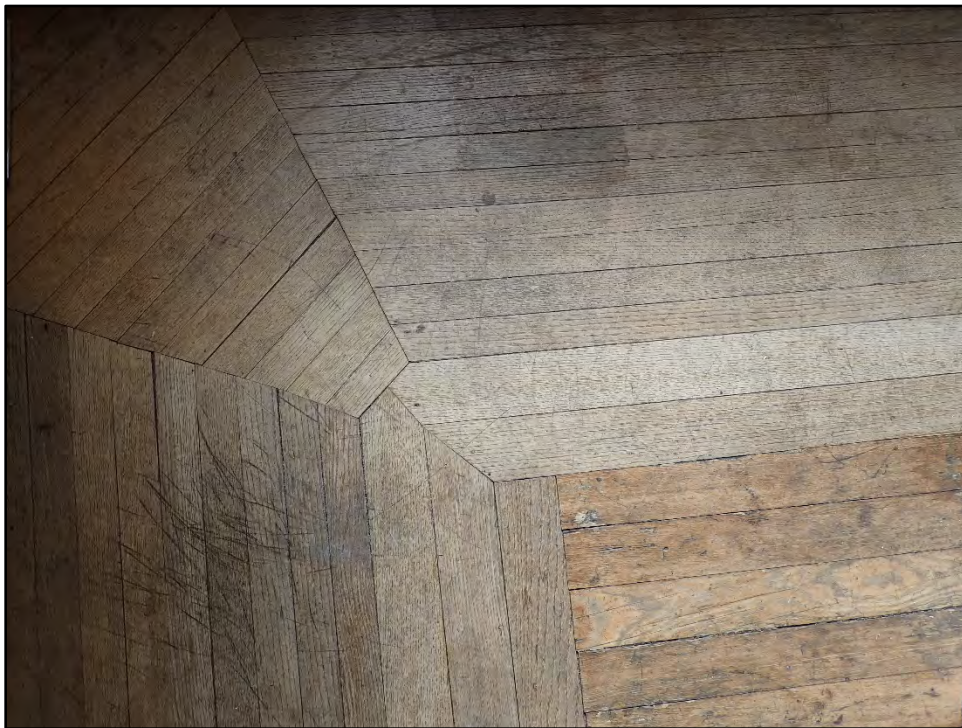


Figure D-122. Detail of the patterned hardwood floor.



Figure D-123. Additional section of patterned hardwood floor.

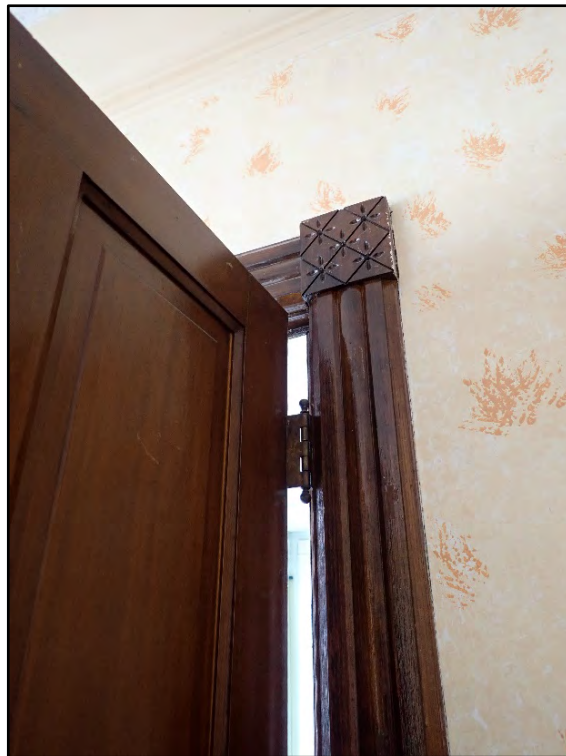


Figure D-124. Detail of the casings and corner block of the door to the dining room.



Figure D-125. View of the dining room as seen from the formal living room.



Figure D-126. View of the cottage windows in the dining room.



Figure D-127. Cottage window between the dining room and kitchen.



Figure D-128. View of the interior cottage window and swinging door to the kitchen.



Figure D-129. Interior of the dining room, which was likely created by expanding an earlier kitchen (built by 1901) between 1910 and 1916.



Figure D-130. View of the back of the built-in cabinet in the formal living room as it protrudes into the dining room.



Figure D-131. Alternative view of the back of the built-in cabinet in the formal dining room, showing the wood wainscoting that rings the dining room.



Figure D-132. Detail of the French door to the hallway.



Figure D-133. View showing the wainscoting around the dining room.



Figure D-134. View of the built-in cabinet in the corner.



Figure D-135. Interior corner of the dining room as seen from the built-in cabinet.



Figure D-136. Overview of the interior of the dining room.



Figure D-137. View toward the door to the kitchen with the cottage windows in the background.



Figure D-138. View of the built-in cabinet and the swinging door to the kitchen.



Figure D-139. View of the door to the kitchen with upper transom.



Figure D-140. Detail of the upper transom above the swinging door to the kitchen.



Figure D-141. The mechanism for the upper transom is still in working order.



Figure D-142. View of the upper transom, which still opens and closes.



Figure D-143. Interior of the dining room toward the hall.



Figure D-144. Alternative view of the dining room.



Figure D-145. Overview of the cottage windows in the dining room.



Figure D-146. Close-up view of the decorative transom panel (flash on when taken).



Figure D-147. Close-up of decorative transom panel, with the sunshine peeking through (flash off when taken).

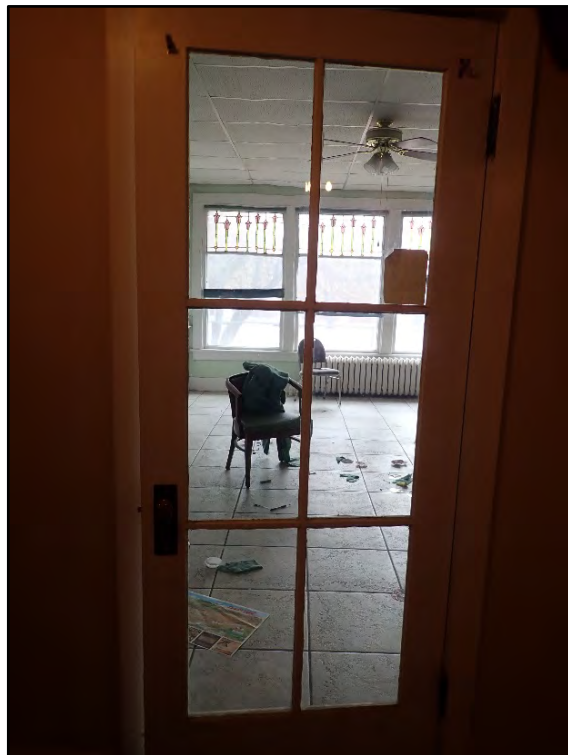


Figure D-148. View into the dining room from the main hallway.



Figure D-149. Close-up of the decorative doorknob and rose of the French door.



Figure D-150. A view into the kitchen as seen from the dining room.

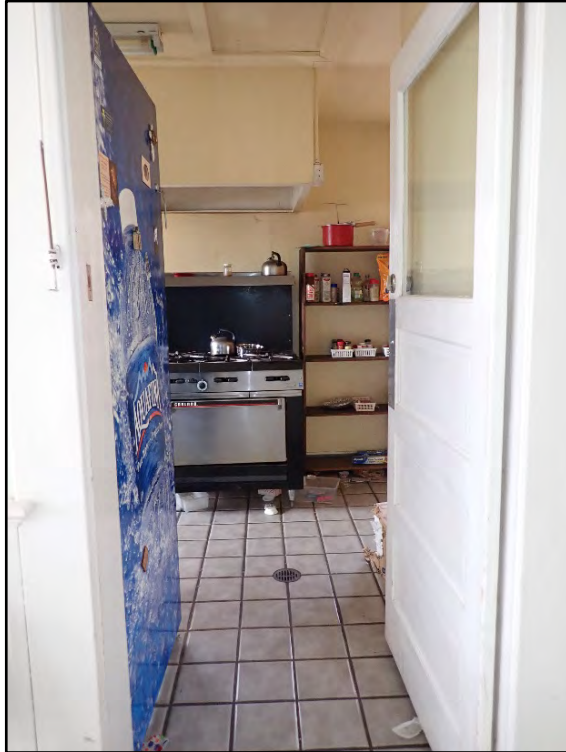


Figure D-151. Through the swinging door into the kitchen.



Figure D-152. Interior of the kitchen toward the exterior door.



Figure D-153. View of the windows on the west side of the kitchen and modern cabinetry.



Figure D-154. View toward the south end of the kitchen.



Figure D-155. View of the cottage window of the dining room.



Figure D-156. Interior of the kitchen (view toward the chapel).



Figure D-157. View of the north end of the kitchen.



Figure D-158. Overview of the interior of the kitchen.



Figure D-159. View into the kitchen from the chapel.



Figure D-160. The exterior door that is currently boarded up, and the only way to access the interior of the residence.



Figure D-161. View of the modern exterior door that was kicked in during a break-in.



Figure D-162. View into the kitchen from the porch outside the kitchen.



Figure D-163. Overview of the modern cabinetry.



Figure D-164. View of the corner of the kitchen just outside the chapel.



Figure D-165. A peek into the chapel from the kitchen.

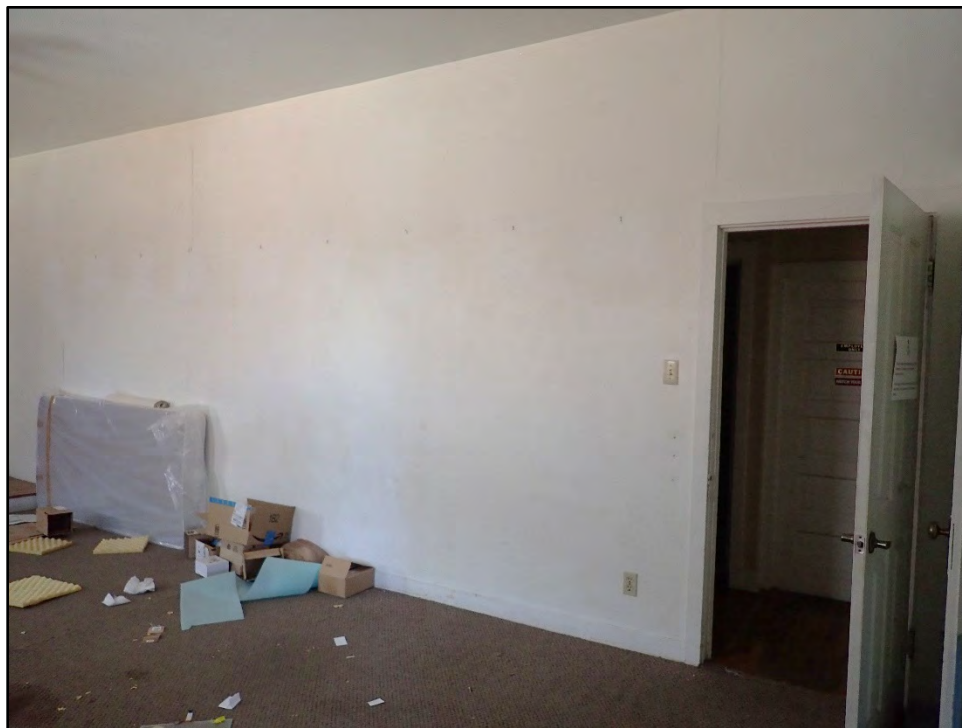


Figure D-166. View of the interior wall of the chapel (with the door to the hallway).



Figure D-167. Overview of the interior of the chapel, the main portion of which was constructed by 1916, with the addition (in the background) built between 1948 and 1958.



Figure D-168. Overview of the exterior windows of the chapel.



Figure D-169. Detail of one of the chapel windows.



Figure D-170. View showing the arched walls of the later extension of the chapel.



Figure D-171. Detail of the wooden steps of the chapel.



Figure D-172. View of the north side of the chapel built between 1948 and 1958.



Figure D-173. View of the west wall of the chapel extension.



Figure D-174. View as seen from the chapel extension.



Figure D-175. View of the interior of the chapel as seen from the chapel extension.



Figure D-176. Alternative view of the chapel interior from the northwest corner of the chapel extension.



Figure D-177. View of the east wall of the chapel extension.

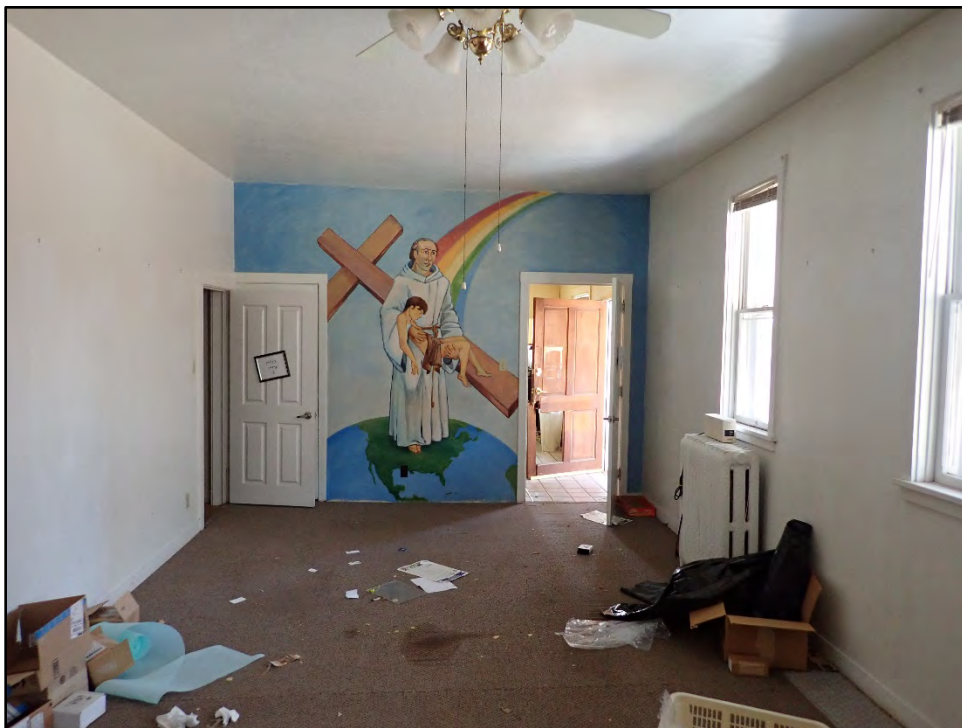


Figure D-178. View of the interior of the chapel, with the door to the kitchen (right) and the door to the hallway (left) with a colorful mural at the back.



Figure D-179. View of the mural painted in 1997, with the kitchen door (right) and closet door (left).



Figure D-180. Door at the rear of the chapel to the main hallway.



Figure D-181. Through the door and into the hallway.



Figure D-182. A look back into the chapel from the hallway.



Figure D-183. A glance down the hall to the fourth small bedroom (door to the basement on the right).



Figure D-184. View of the door into the fourth small bedroom.



Figure D-185. Overview of the interior of this small bedroom, built between 1910 and 1916.



Figure D-186. View of the one window in the bedroom, now boarded over.



Figure D-187. View of the west wall of the bedroom.



Figure D-188. Alternative view of the small bedroom and window.



Figure D-189. View of the opposite corner of the bedroom.



Figure D-190. Overview of the interior of the bedroom looking toward the hallway.



Figure D-191. Detail of the decorative radiator in the bedroom.



Figure D-192. View of the doors to the hallway and closet (the latter of which is on the left).



Figure D-193. View of the wood panel door with an upper panel of privacy glass.



Figure D-194. Detail of the interior of the closet.



Figure D-195. A ceiling light with a ceramic base and cloth shade on the ceiling, likely dating to the mid-twentieth century.



Figure D-196. A view toward the closet and hall back to the main hallway.



Figure D-197. A view through the connected bath as seen from the hallway near the small bedroom.



Figure D-198. From outside the connected bath, one can see the door to the chapel (right), to the basement (left) and through to the main hallway.

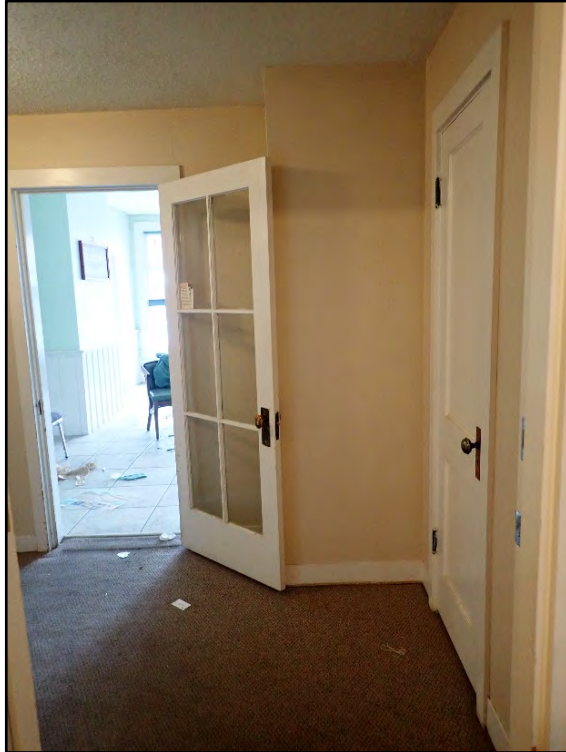


Figure D-199. View of the west end of the main hallway (with the interior of the kitchen in back).

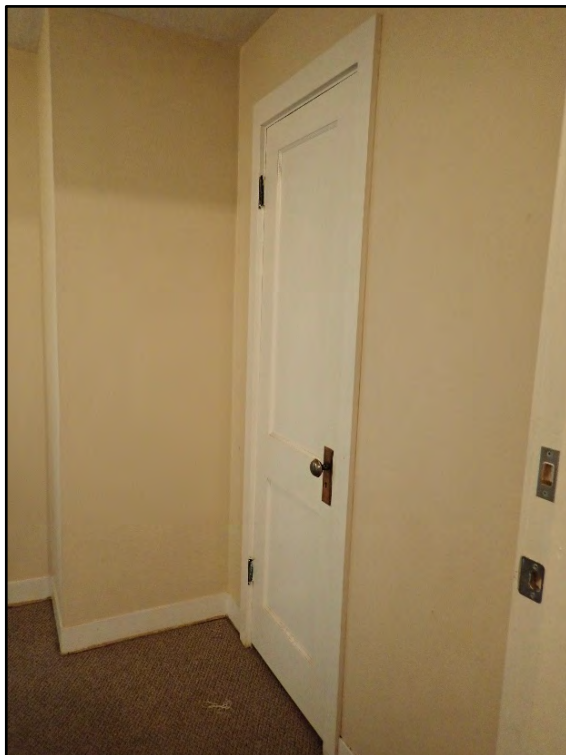


Figure D-200. The door to the storage closet in the main hallway.

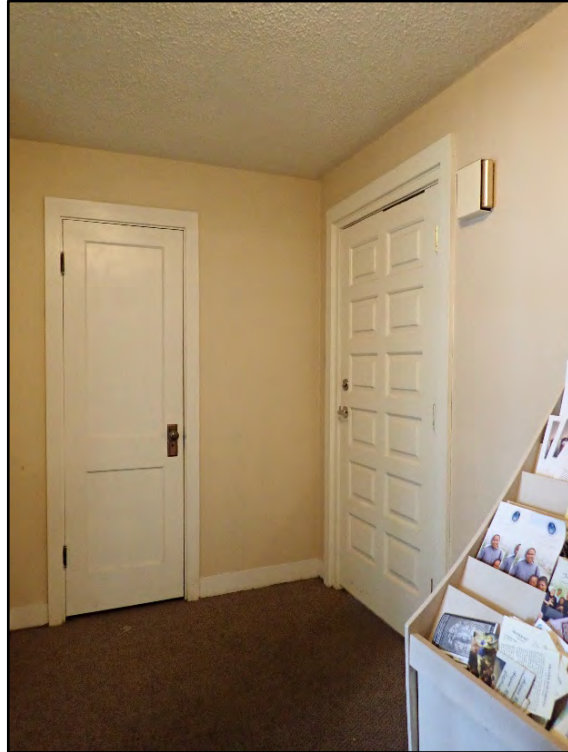


Figure D-201. The supply closet and the modern door that provides access to the chapel, small bedroom, basement, and the connected bath.



Figure D-202. A view of the supply closet with a peek into the chapel.

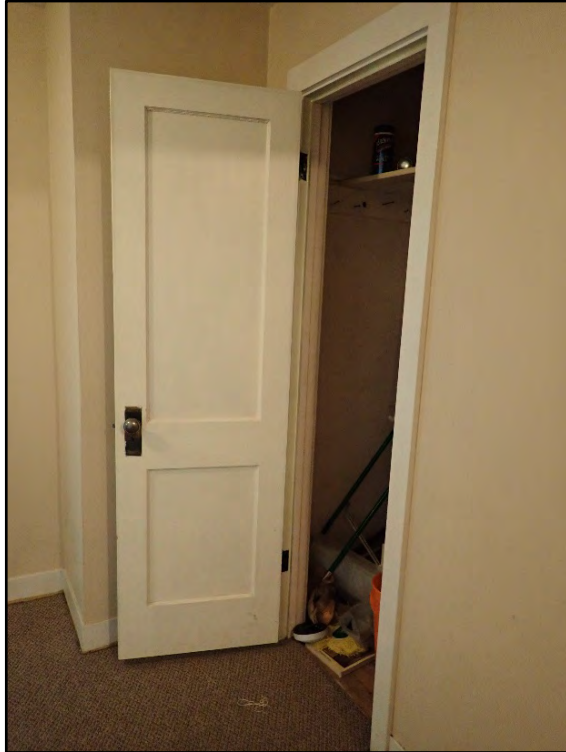


Figure D-203. A view of the open supply closet.

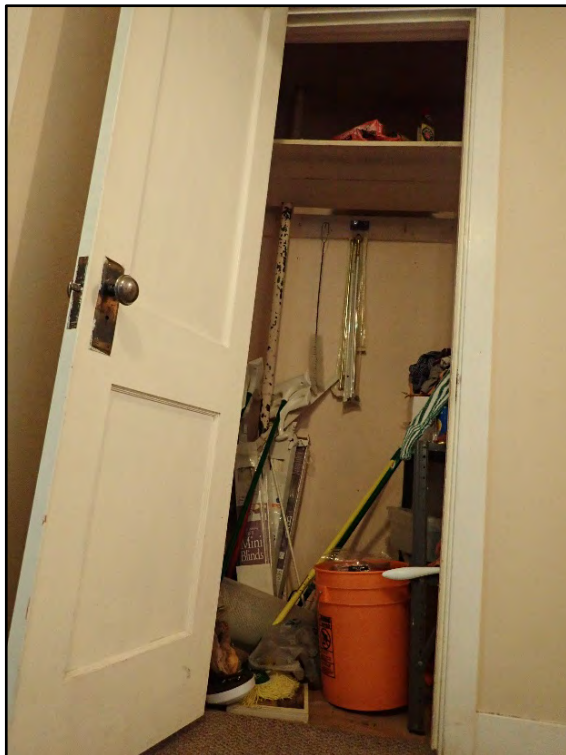


Figure D-204. Detail of the interior of the supply closet.



Figure D-205. West end of the main hall near the dining room.



Figure D-206. A view down the main hallway from outside the dining room.



Figure D-207. The main hallway with the door to the formal living room on the right and built-in cabinet on the left.



Figure D-208. A view of the large built-in cabinet and shelving.



Figure D-209. A view back down the hallway toward the supply closet.



Figure D-210. Backing down the main hallway, looking toward the west side of the residence.



Figure D-211. Alternative view of the built-in cabinet in the main hallway.



Figure D-212. Detail of the craftsmanship of the built-in cabinet shelving.



Figure D-213. Close-up detail of the decorative brass drawer pulls of the built-in cabinet.



Figure D-214. Overview of the east end of the main hallway.

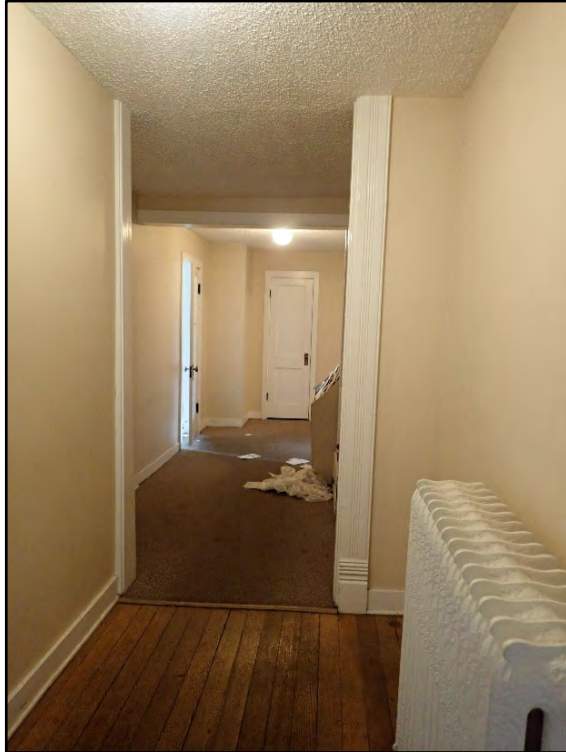


Figure D-215. This section of the main hallway likely dates to the original 1886 construction.

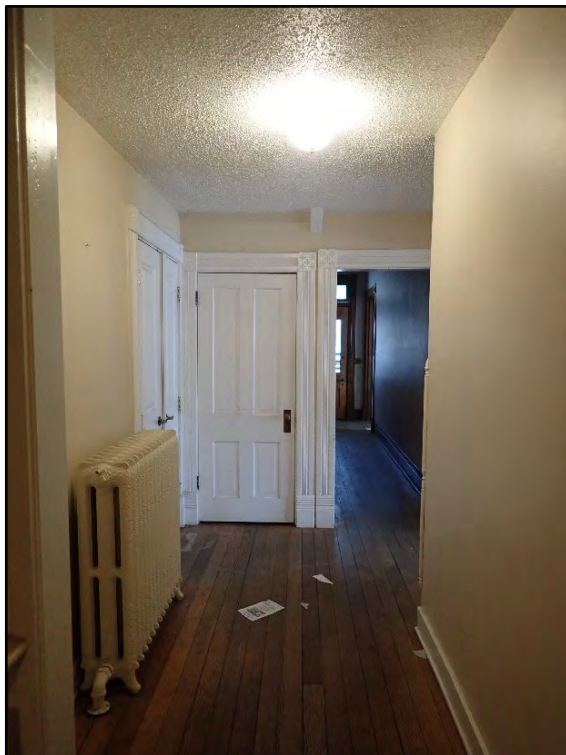


Figure D-216. Looking back down the hall toward the front door and under-stair closet.



Figure D-217. Decorative wood detailing on the corners of the main hallway.



Figure D-218. An alternate view of the decorative wood details seen throughout the residence.



Figure D-219. View of the closet under the main staircase and the entrance hall.



Figure D-220. Detail of the decorative architraves (side casings) and corner blocks of the under-stair closet and entrance hall as seen in the main hallway.



Figure D-221. Detail of the architraves (side casings) of the entrance hall and formal living room as seen in the main hallway.



Figure D-222. Original door to the under-stair closet in the main hallway of the first floor.



Figure D-223. The door to the under-stair closet next to the modern French doors in the main hallway.



Figure D-224. A view of the closet under the stairs, which is likely original to the 1886 construction.



Figure D-225. An additional view of the under-stair closet.



Figure D-226. Detail view of the lath-and-plaster construction of the walls in the under-stair closet, which are cracking.



Figure D-227. The modern French doors to the hallway to the bedrooms on the first floor.



Figure D-228. Detail of the decorative corner blocks and side casings around the door to the under-stair closet and French doors to the other hallway to the bedrooms.



Figure D-229. The modern French doors opened to the hallway to the bedrooms (the under-stair closet is on the right).



Figure D-230. The hallway to the bedrooms located in the original extent of the 1886 house, with a built-in cabinet on the left.



Figure D-231. Detail of the built-in cabinet in the hallway to the bedrooms.



Figure D-232. The hallway to the bedrooms, the two on the right being original to the 1886 construction.



Figure D-233. The solid-core wood door to the master bedroom.



Figure D-234. Overview of the interior of the master bedroom.



Figure D-235. Alternative view of the master bedroom as seen from the other side of the room.



Figure D-236. View of the cant bay window in the master bedroom with original hardwood floors.



Figure D-237. A view of the profile of the fireplace and door to the hallway.



Figure D-238. A view toward the enclosed porch adjacent to the master bedroom, with the outline of the former entrance door visible in the right of the image (note the change in the baseboard at the lower right).



Figure D-239. Detail of the decorative architrave and corner blocks of the cant bay window.



Figure D-240. An alternative view of the wood details of the cant bay window.



Figure D-241. Close-up view of the elegant details in the brass window lock of the cant bay window in the master bedroom.



Figure D-242. Detail of the decorative radiator in the master bedroom.



Figure D-243. Detail of the closet door and wood trim in the master bedroom.



Figure D-244. An alternate detailed view of the master bedroom closet.



Figure D-245. Close-up view of the decorative plinth blocks and baseboards in the master bedroom.



Figure D-246. A view of the fireplace in the master bedroom, which consists of the same cast bronze insert as seen in the formal living room.



Figure D-247. The similarities between the master bedroom fireplace and that in the living room can be seen here.



Figure D-248. A view showing the details on the knob that opens and closes the fireplace damper in the master bedroom.