

**APPENDIX D**

**Interior Photographs of the David Babbitt House  
(319 North Beaver Street)**

**Section 3 of 6**





**Figure D-249. Detail of the tiles of the hearth extension of the fireplace.**



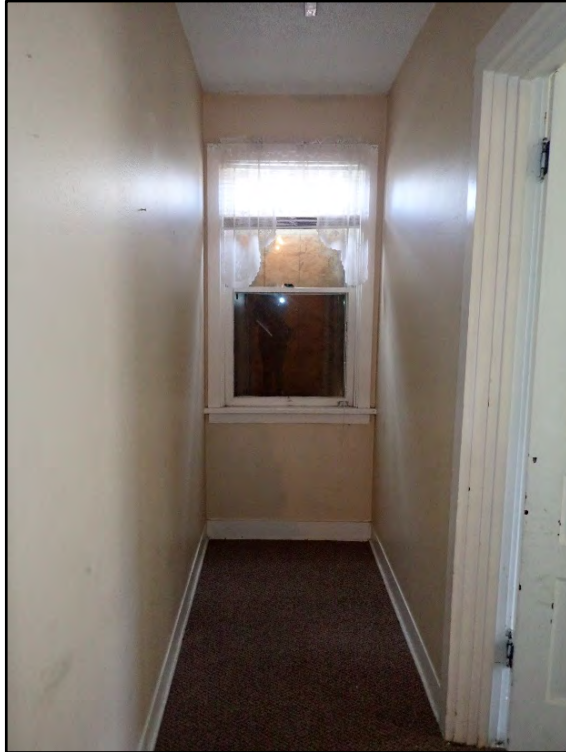
**Figure D-250. View showing the patterned hardwood floors in the master bedroom, reminiscent of the sitting room but distinctly more intricate.**



**Figure D-251. Close-up view of the cracked plaster wall finish (which was once an open door to the entrance hall, as indicated by the difference in baseboards).**



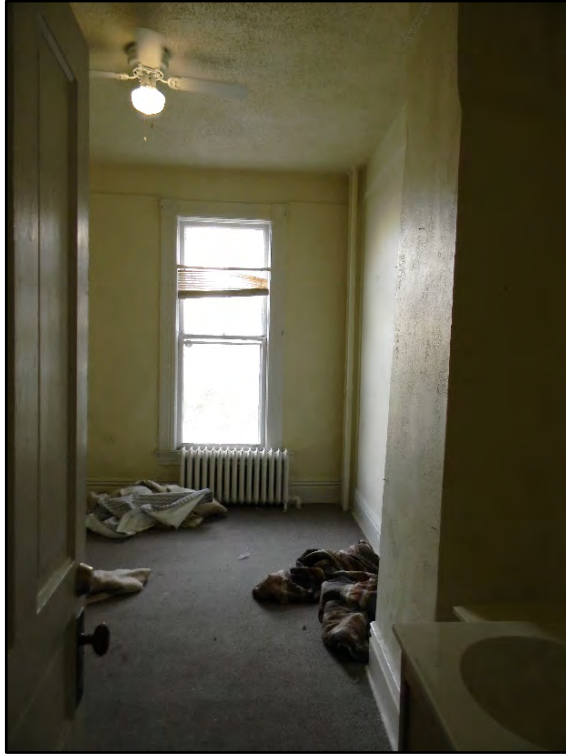
**Figure D-252. Close-up of the original door knob and rose affixed to the solid-core wood door.**



**Figure D-253. A view of the north end of the hallway to the bedrooms.**



**Figure D-254. The solid-core door of the first small bedroom.**



**Figure D-255. Overview of the interior of the first small bedroom, which is part of the original 1886 house.**



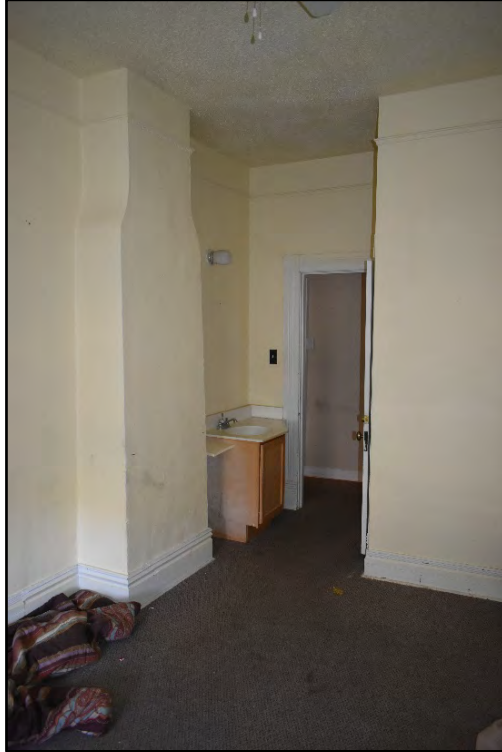
**Figure D-256. View of the window and radiator of the first small bedroom.**



**Figure D-257. Detail of the decorative window trim, picture molding, and pipes in the small bedroom.**



**Figure D-258. Close-up view of the damage around and under the window.**



**Figure D-259. Overview of the interior of the room, with the chimney and fireplace of the master bedroom visible on the left.**



**Figure D-260. An alternate view of the first small bedroom (note the picture molding circles the whole room).**



**Figure D-261. The doors to the closet and hallway.**



**Figure D-262. The solid-core wood door with upper glass panel.**



**Figure D-263. Detail view of the interior of the closet.**



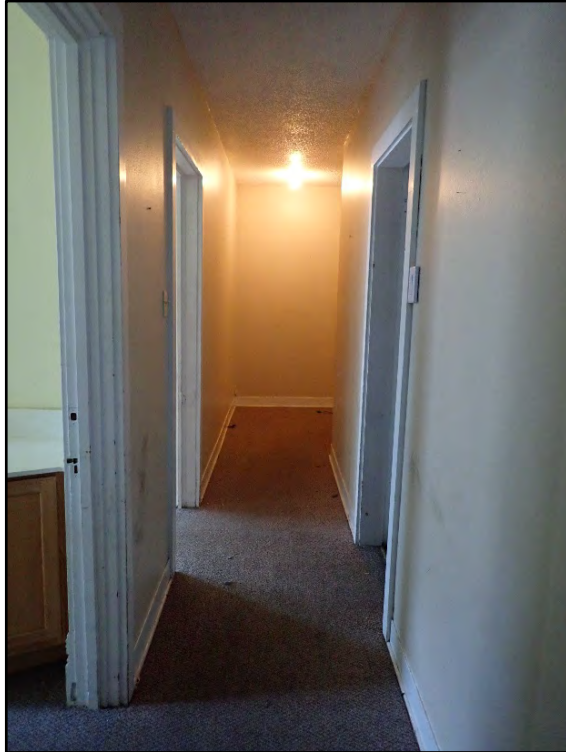
**Figure D-264. Close-up of the picture molding above the wood details of the door trim in the first small bedroom.**



**Figure D-265.** View of the door to the first small bedroom and the end of the hallway.



**Figure D-266.** The now-boarded-up window at the end of the hall, which was installed sometime between 1910 and 1916 when the home was expanded.



**Figure D-267. A view of the hallway to the bedrooms (the first small bedroom on the left and the second on the right).**



**Figure D-268. Entrance to the second small bedroom on the first floor.**



**Figure D-269. Overview of the interior of the second small bedroom.**



**Figure D-270. An alternate view of the interior of the second small bedroom.**



**Figure D-271. View of the interior of the second bedroom toward the door and hallway.**



**Figure D-272. The small closet with solid-core wood door in the second bedroom on the first floor.**



**Figure D-273. The corner closet of the second bedroom on the first floor.**



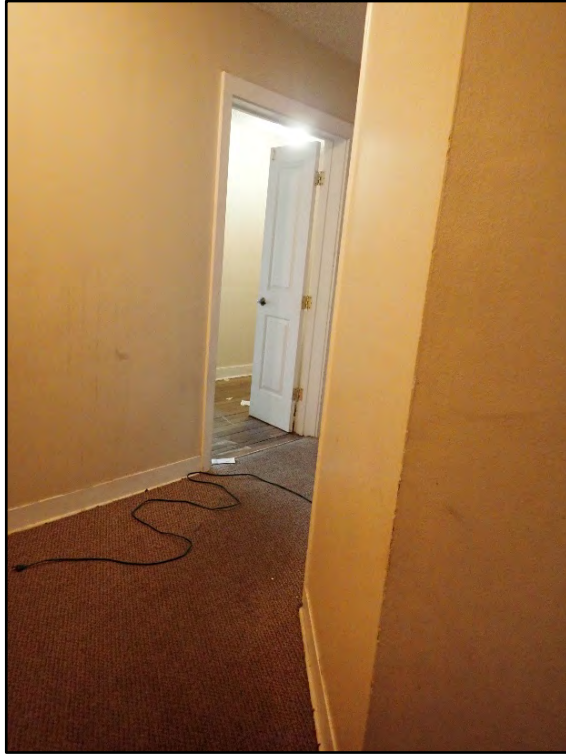
**Figure D-274. A toilet has been installed in the second small bedroom.**



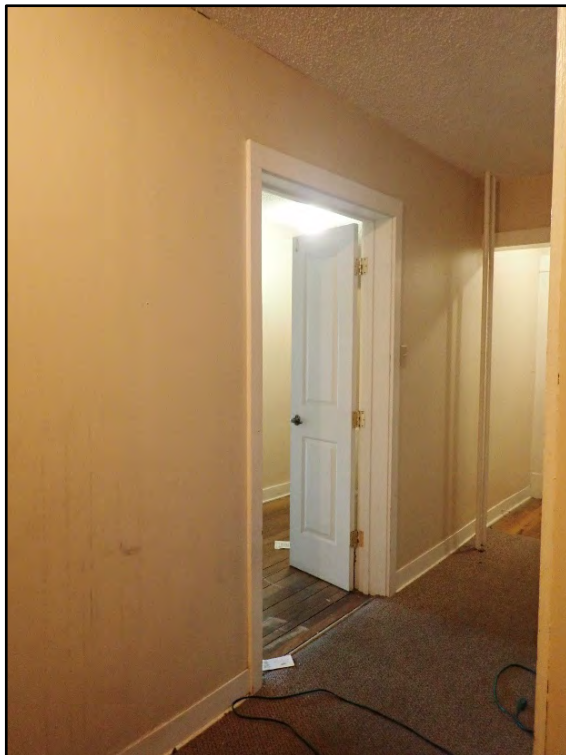
**Figure D-275. One last look down the hallway to the bedrooms in the original part of the house.**



**Figure D-276. A view of the corner of the hallway to the bedrooms on the first floor.**



**Figure D-277. A view of the angled corner in the hallway on the first floor.**



**Figure D-278. Around the angled corner are the French doors to the main hallway.**



**Figure D-279. View down the hallway toward the secondary staircase to the second floor.**



**Figure D-280. The small hall bath is located off the hallway to the bedrooms.**



**Figure D-281. A view through the door of the small hall bathroom.**



**Figure D-282. A modern stand-alone shower with other modern fixtures as seen in the hall bath.**



**Figure D-283. A small heater, with modern tile floor and wall juxtaposed with the original historic-era finish of the wall on the right.**



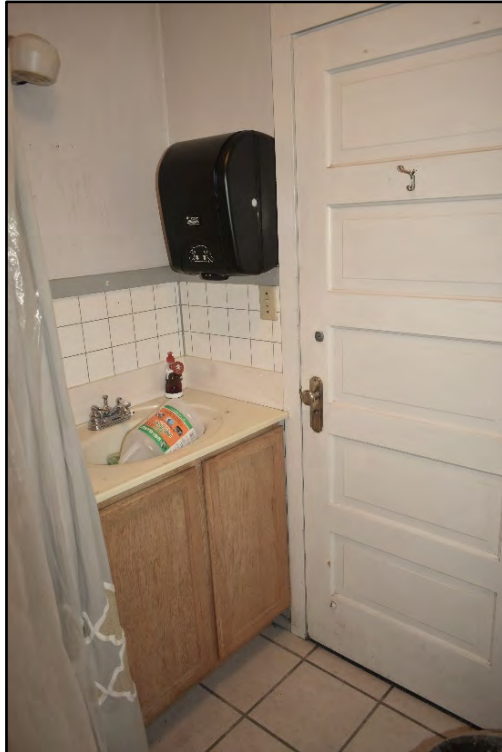
**Figure D-284. The toilet in the small hall bath (the door is open in this image).**



**Figure D-285. Detail of the finish of the walls above the tile wainscot and cap molding in the hall bath.**



**Figure D-286. Detail of the historic-era vent in the ceiling that may indicate this space was used as a bathroom when first constructed (and may be part of the expansion between 1895 and 1901).**



**Figure D-287. View of the interior of the hall bath as seen with the door to the hallway closed.**



**Figure D-288. Close-up view of the decorative door hardware of the hall bath.**



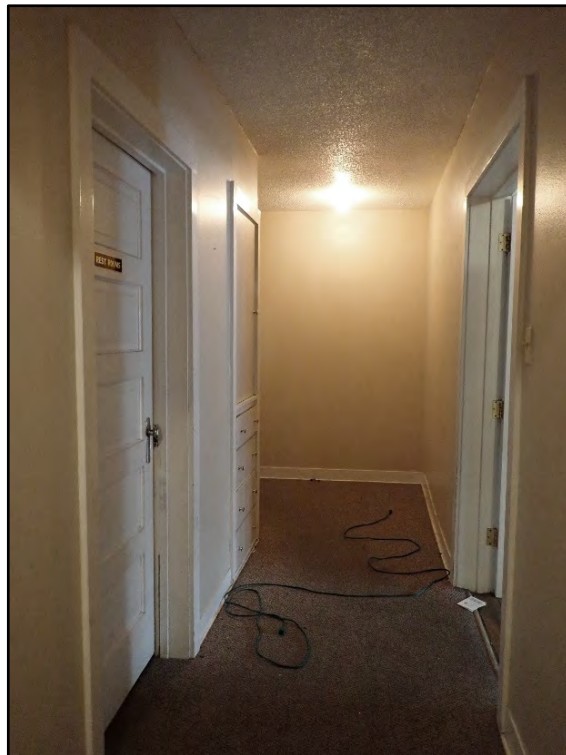
**Figure D-289. A look from the hall bath into the hall, with the formal living room beyond.**



**Figure D-290. An alternate view of the small hall bath with the built-in cabinet in the back right.**



**Figure D-291. The wood panel door to the small hall bath.**



**Figure D-292. A view back down the hall toward the bedrooms on the first floor.**



**Figure D-293. The French doors to the main hallway as seen from near the small hall bath.**



**Figure D-294. A view of the end of the hall, showing the secondary staircase to the second floor and the connected bath (on the right).**



**Figure D-295. The built-in cabinet and shelving on the east side of the connected bath.**



**Figure D-296. A view through the connected bath to the opposite hall (toward the fourth small bedroom and chapel).**



**Figure D-297. An interior view of the west side of the connected bath.**



**Figure D-298. Detail of the modern tub/shower combination.**



**Figure D-299. A view of the west side of the connected bath with the door closed.**



**Figure D-300. A view back toward the east side of the connected bath as seen from the hallway outside the fourth small bedroom on the first floor.**



**Figure D-301. Detail of the decorative radiator in the connected bath.**



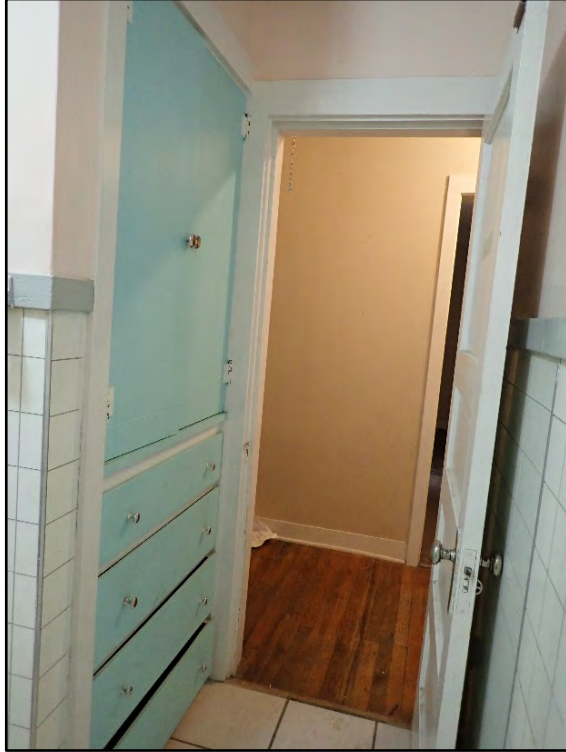
**Figure D-302. An alternate view of the east side of the connected bath.**



**Figure D-303. The interior of the bathroom door to the east side hallway.**



**Figure D-304. Close-up of the built-in cabinet drawers in the connected bath.**



**Figure D-305. The built-in cabinet and east side hallway of the connected bath.**



**Figure D-306. A close-up view of the bathroom door hardware, which is the same as that in the small hall bath down the hall.**



**Figure D-307. Leaving the connected bath, and moving onto the third small bedroom on the first floor.**



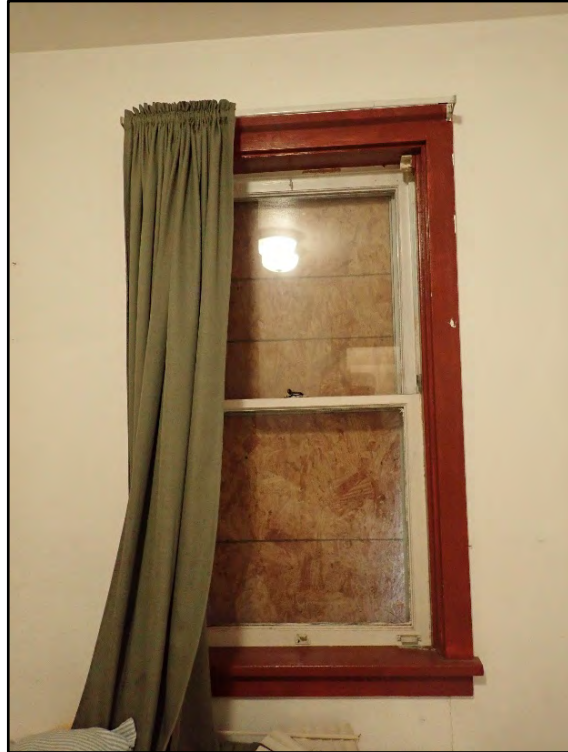
**Figure D-308. A look into the third small bedroom on the east side of the connected bath.**



**Figure D-309. The interior of the third small bedroom and closet.**



**Figure D-310. Overview of the interior of this small bedroom.**



**Figure D-311. Detail view of the window in the third small bedroom.**



**Figure D-312. An alternate view of the interior of the third small bedroom.**



**Figure D-313. The decorative radiator in the corner of the bedroom.**



**Figure D-314. A view of the closet door in proximity to the hallway.**



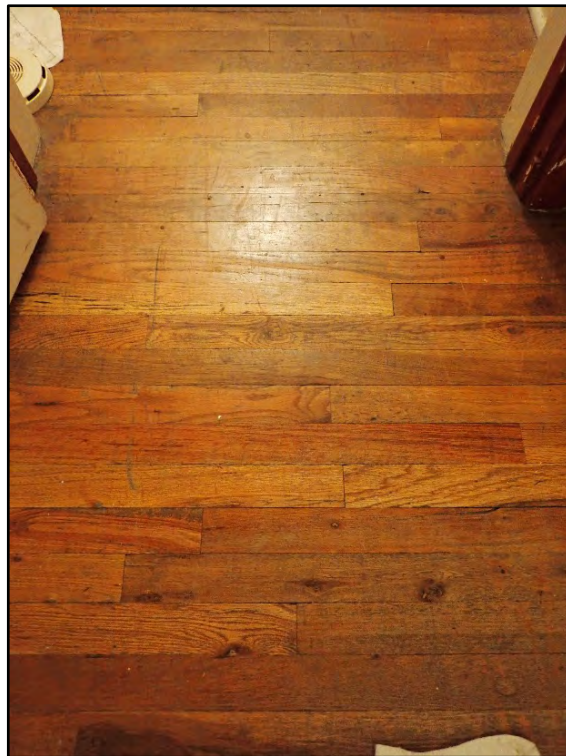
**Figure D-315. A peek into the closet of the third small bedroom.**



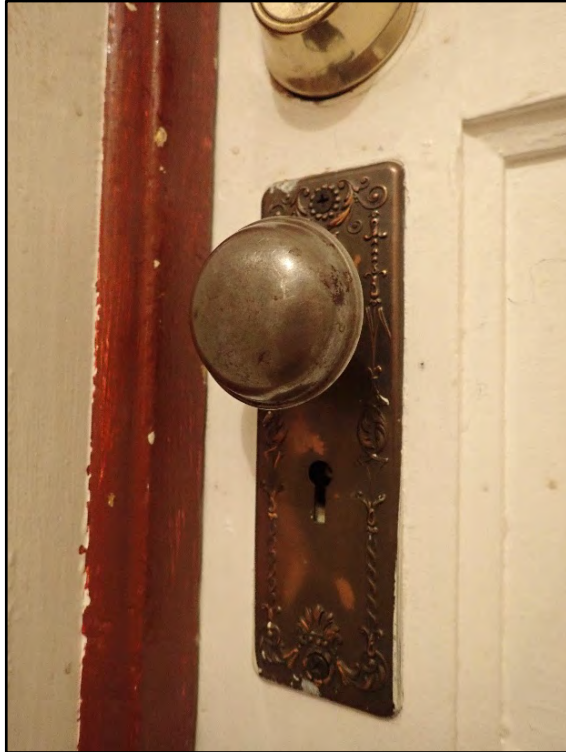
**Figure D-316. Detail view of the interior of the closet.**



**Figure D-317. The upper portion of the closet of the third small bedroom.**



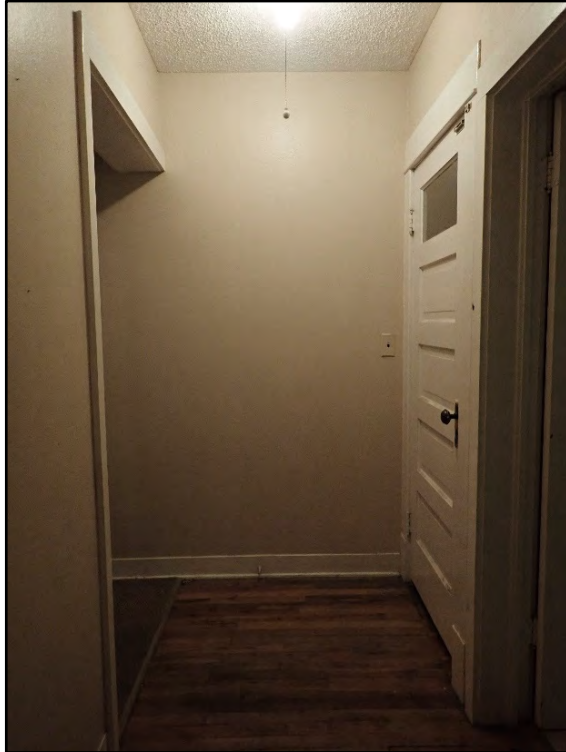
**Figure D-318. The original hardwood floors installed when this part of the house was constructed between 1910 and 1916.**



**Figure D-319. A close-up view of the original decorative doorknob and plate below a modern deadbolt.**



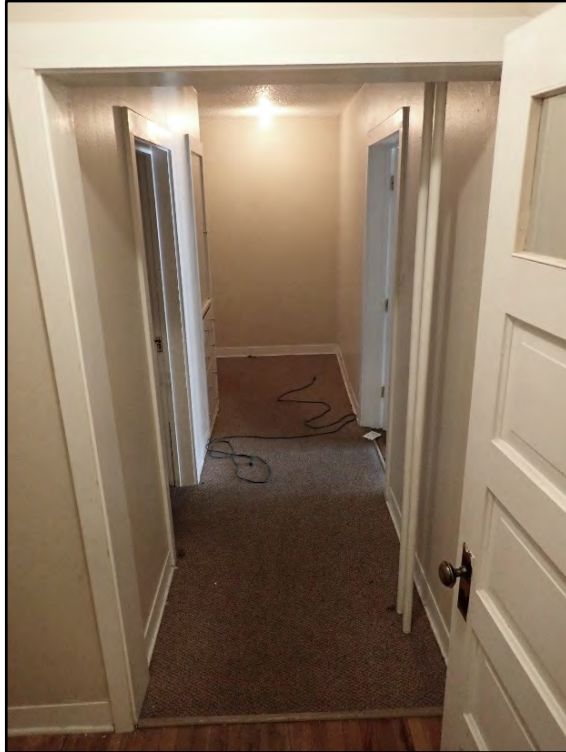
**Figure D-320. The original solid-core wood door to the third small bedroom.**



**Figure D-321. View of the west end of the hallway with the door to the secondary stair on the right.**



**Figure D-322. The original door of the secondary stair to the upper floor.**



**Figure D-323. Looking back down the hall at the small hall bath (left) and French doors to the main hallway (right).**



**Figure D-324. The secondary staircase on the west end of the home as seen through the upper glass panel of the door.**



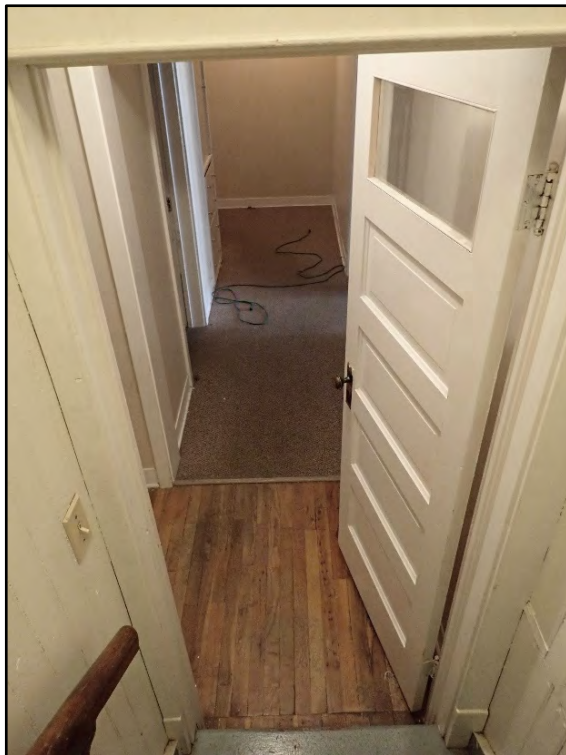
**Figure D-325. A detail view of the hardwood floors in this portion of the hallway and at the base of the secondary stair.**



**Figure D-326. The batten paneling in the secondary stair to the second stair, which was likely reserved for family use.**



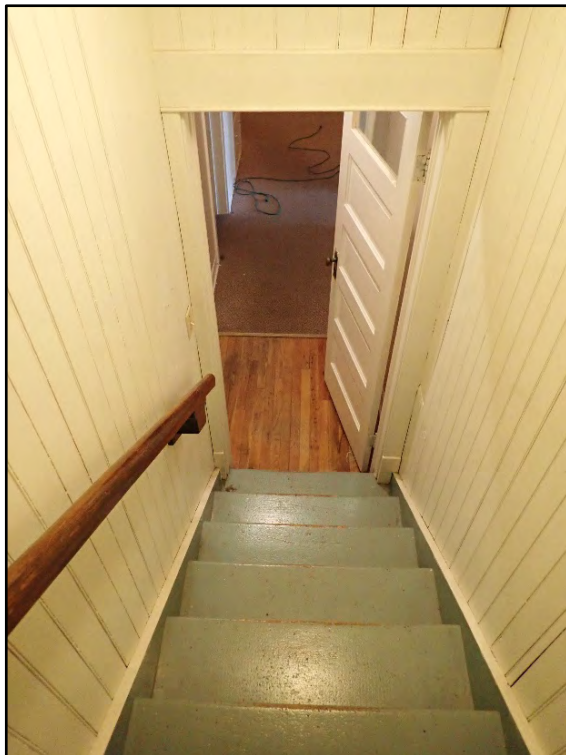
**Figure D-327. Walking up the stairs toward the second floor.**



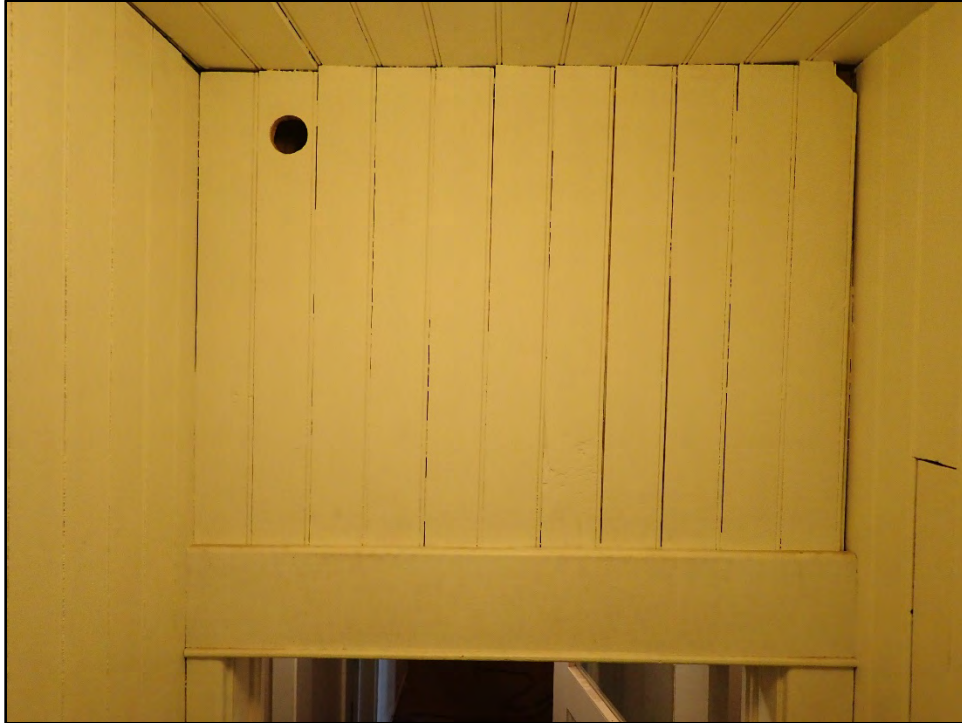
**Figure D-328. A view back down the staircase and into the hallway to the bedrooms.**



**Figure D-329. The interior of the door at the bottom of the secondary stair.**



**Figure D-330. A look back down the staircase.**



**Figure D-331. Detail of the space above the door at the bottom of the secondary staircase.**



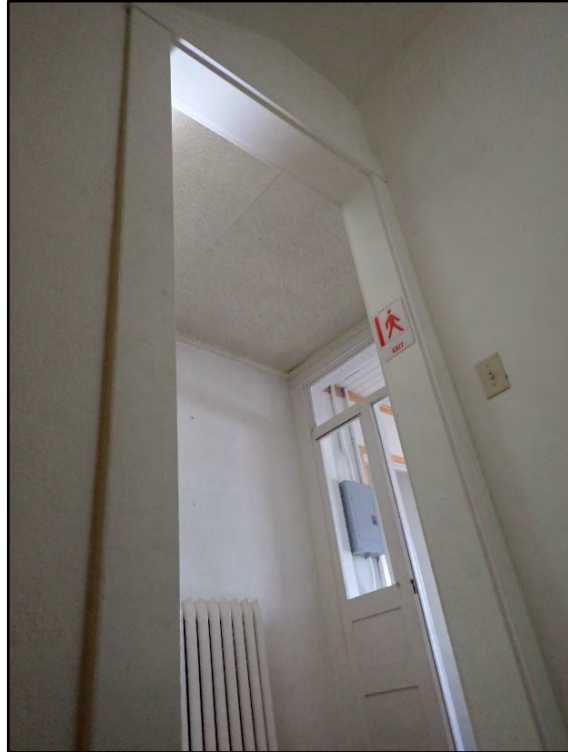
**Figure D-332. A close-up view of the batten wood paneling and cap molding in the secondary staircase.**



**Figure D-333. An alternative view down the stairs.**



**Figure D-334. A detailed view of the 90-degree winder of the secondary staircase.**



**Figure D-335. The approach to the second floor.**



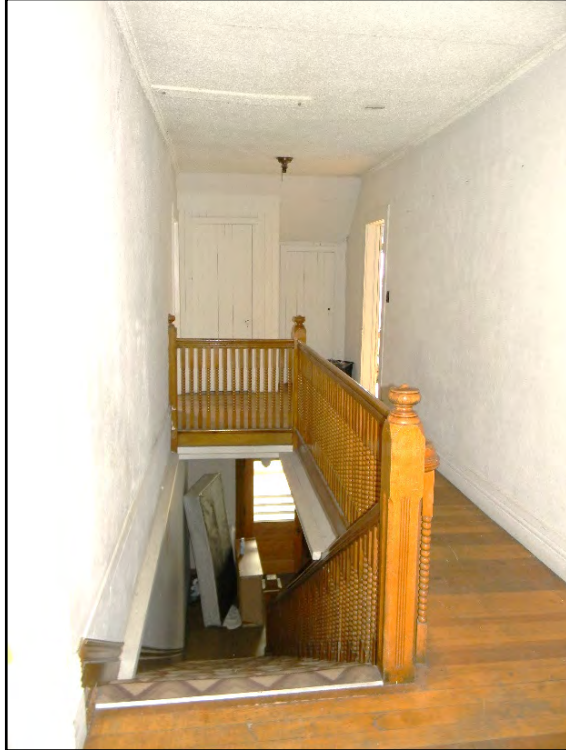
**Figure D-336. Alternative view showing the construction of the secondary staircase.**



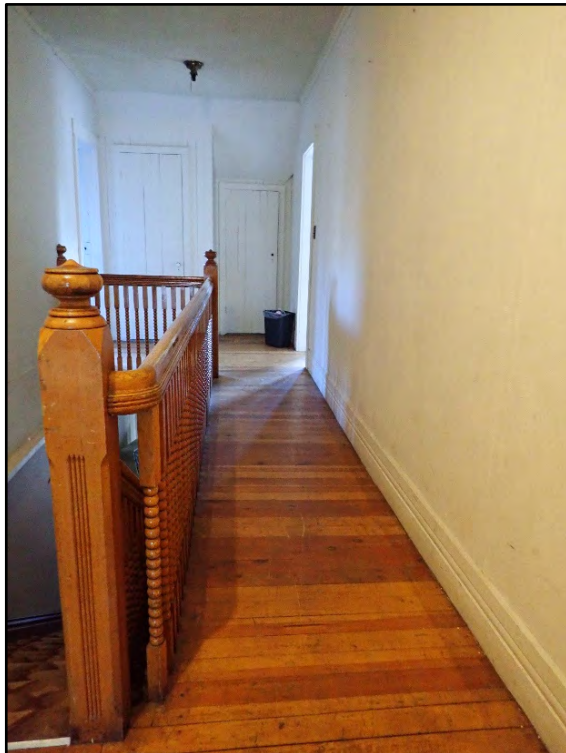
**Figure D-337. View down the secondary stair as seen from the second floor.**



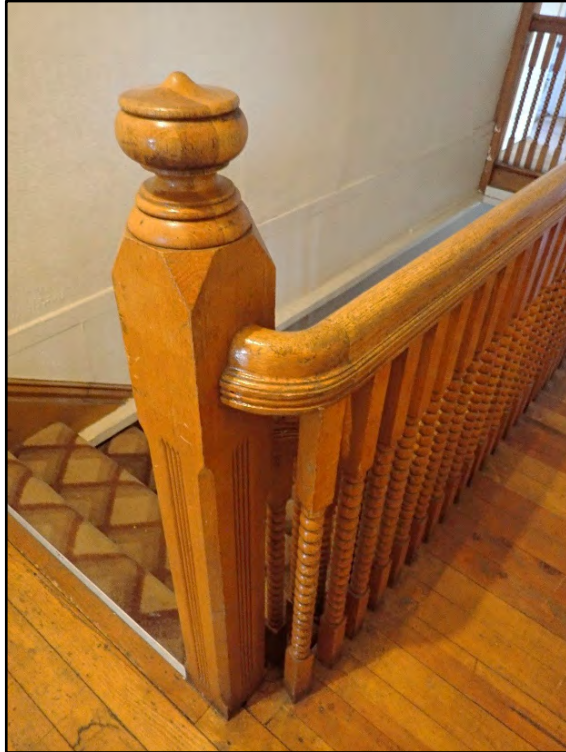
**Figure D-338. Overview of the main hallway on the second floor (note the main staircase to the first floor).**



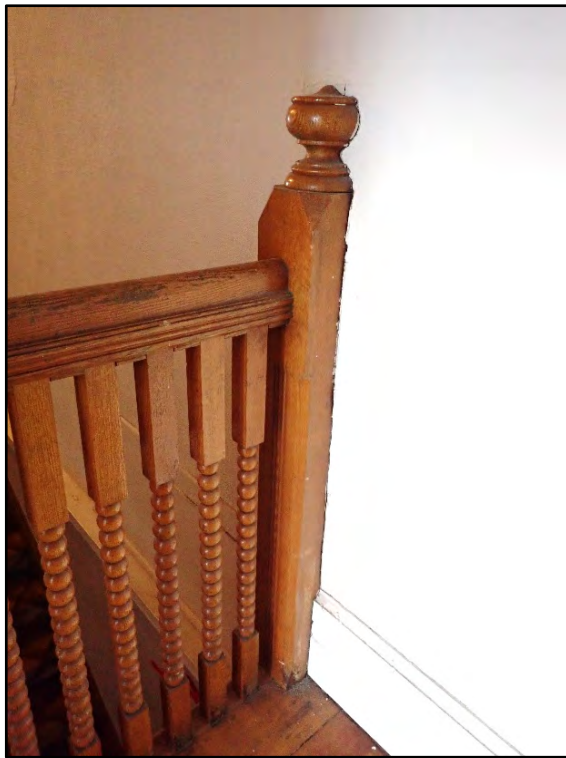
**Figure D-339. An alternative view of the main staircase as seen from the second floor.**



**Figure D-340. The narrow hall adjacent to the upper balustrade of the main staircase.**



**Figure D-341. Detail of the newel post, newel cap, railing and balusters.**



**Figure D-342. Detail of the newel post at the end of the balustrade.**



**Figure D-343. The end of the balustrade of the main staircase.**



**Figure D-344. A glance into the first bedroom on the second floor (part of the original 1886 residence).**



**Figure D-345. A set of paired windows in the first bedroom as seen from the hallway.**



**Figure D-346. View of the south gable end of the first bedroom.**



**Figure D-347. The edge of the gable cuts into the room (note the cracked wall at right).**



**Figure D-348. View of the east gable end facing North Beaver Street.**



**Figure D-349. A look back toward the main hallway on the second floor.**



**Figure D-350. View showing the small closet near the door.**



**Figure D-351. Interior view of the closet in the first bedroom.**



**Figure D-352. A decorative radiator, similar to those throughout the residence, sits under the roof which cuts in because of the gable end.**



**Figure D-353. Detail of the hardwood floors in the first bedroom.**



**Figure D-354. A close-up view of the decorative bedroom door hinges which are still present.**



**Figure D-355. Close-up view of the historic-era light switch and brass faceplate in the bedroom.**



**Figure D-356. View back into the main hallway, with the second bedroom beyond (note the extensive cracking in the walls and ceiling in this part of the hallway).**



**Figure D-357. The main hallway extending down toward the west side of the residence.**



**Figure D-358. Between the first and second bedrooms are two small storage closets created from batten panels and doors.**



**Figure D-359. The smaller closet door reveals the angled space obscured by these storage closets.**



**Figure D-360. A peek into the closet reveals a small bench and the lath-and-plaster wall construction that is original to the 1886 residence.**



**Figure D-361. The rear of the closet space shows that, while there are two doors, the actual space is not divided, but the bench extends across the back.**



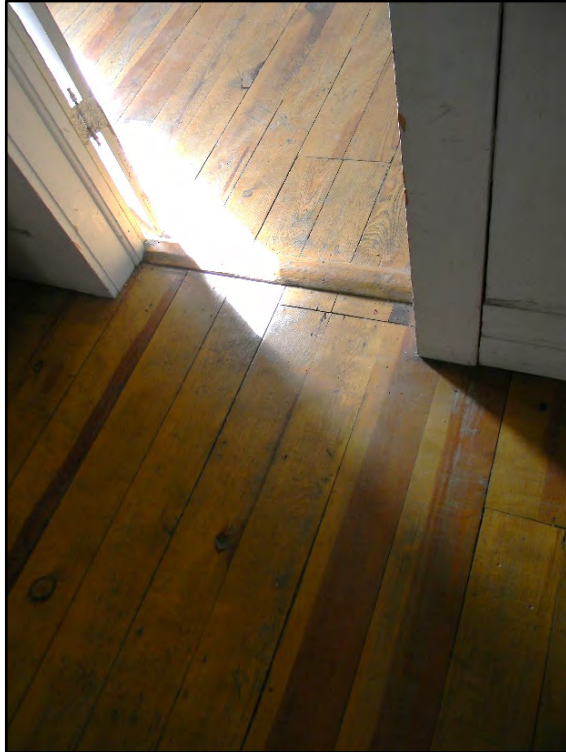
**Figure D-362. The larger batten door of the storage closets.**



**Figure D-363.** A close-up view of the lock mechanism of the larger batten door.



**Figure D-364.** An alternative view of the interior of the storage closet, the doors of which likely served to hide what would have been an awkward wall space.



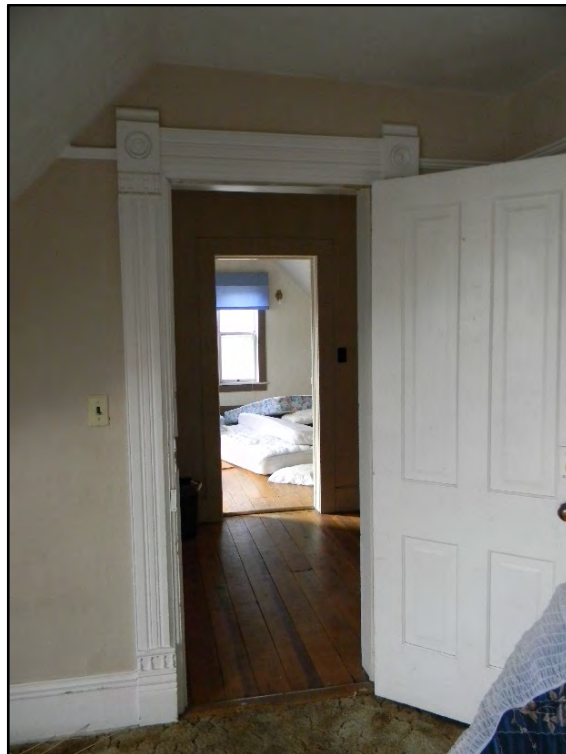
**Figure D-365. A view admiring the original hardwood floors between the main hallway and the first bedroom.**



**Figure D-366. Walking into the second bedroom reveals extensive graffiti due to squatters that broke into the residence.**



**Figure D-367. The vandalism of the second bedroom attempts to distract from the original elements still present in this room (please excuse the inappropriateness of the graffiti in this image).**



**Figure D-368. The first bedroom across the hallway is visible through the door to the second bedroom, both of which were constructed in 1886.**



**Figure D-369.** A close-up view of another late nineteenth century brass door hinge.



**Figure D-370.** A close-up view of the most ornate architrave and corner blocks in the residence (note the picture molding).



**Figure D-371. A close-up view of the decorative wood baseboard and plinth block of the second bedroom.**



**Figure D-372. A view from the gable cut in the second bedroom, with the original bedroom door and picture molding that encircles the room.**



**Figure D-373. An overview of a portion of the interior of the residence, with the picture molding and small connected closet to the next room.**



**Figure D-374. An alternate view of the interior of the room, showing the elegant elements that were incorporated into the construction of this room when it was built in 1886.**



**Figure D-375. An oblique view of the original windows in the second bedroom.**



**Figure D-376. A small yet very decorative radiator sits beneath the paired windows in the gable end facing North Beaver Street.**



**Figure D-377. A close-up view of the carved brass window lock.**



**Figure D-378. An even closer look reveals the metal strip mechanism that opens the single-hung window, which is still in working order after 130 years.**



**Figure D-379. An alternate view of the other side of the windows in the gable end facing the south end of the room.**



**Figure D-380. Another overview of the interior of the room, showing how the Babbitts took wood detailing into all portions of the house, even the private bedrooms.**



**Figure D-381. The roof substantially cuts into this room due to the gable design (note the modern carpet, which hopefully protects original hardwood floors below).**



**Figure D-382. A peek through the connected closet reveals the same wood trim around the original solid-core wood door.**



**Figure D-383. A close-up view of the architrave and corner block of the connected closet.**



**Figure D-384. A view of the interior of the connected closet, which may have allowed the Babbitt children to pass between bedrooms without having to run around the staircase in the main hall.**



**Figure D-385. Shelving has been placed between the outline of the chimney (from the master bedroom below) and the closet wall.**



**Figure D-386. A close-up view showing the workmanship of the connected closet, which made use of even the tightest of spaces resulting from the chimney.**



**Figure D-387. The small, narrow door of the west side of the connected closet.**



**Figure D-388. With the door open, the third bedroom can be seen through the doorway.**



**Figure D-389. A glance back through the connected closet shows the layout between these bedrooms.**



**Figure D-390. Compared to the trim in the second bedroom, the door trim of the third bedroom appears rather plain, but still reveals a high-level of craftsmanship through the cap molding and side door jambs.**



**Figure D-391. View of the east side of the bedroom, with the connected closet to the left and the door of the small corner closet on the right.**



**Figure D-392. An overview of the interior of the third bedroom, which was reconfigured to eliminate the steeply pitched roof and incorporate a grouping of three windows and full-height ceiling.**