

APPENDIX D

**Interior Photographs of the David Babbitt House
(319 North Beaver Street)**

Section 4 of 6



Figure D-393. A detail view of the wood-frame windows that face West Dale Avenue, installed between 1910 and 1916 during the last phase of renovation by David Babbitt.



Figure D-394. An overview of the interior of the room looking toward the laundry room.



Figure D-395. The main hallway as seen through the bedroom door.



Figure D-396. Another decorative radiator can be found in the third bedroom near the hall door.

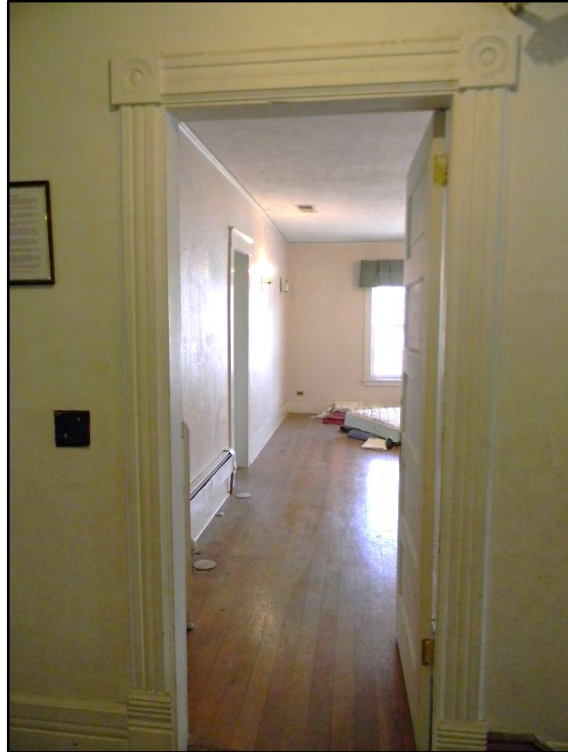


Figure D-397. The door to the third bedroom retains similar decorative wood trim as seen throughout the home.



Figure D-398. Stepping back into the room, this view shows the orientation of yet another closet space in relation to the hall door.



Figure D-399. A close-up view of a historic-era Yale deadbolt lock on the door to the third bedroom.



Figure D-400. A peek into what is today a linen closet in the third bedroom.



Figure D-401. Unlike the other closets, the interior of this one is unfinished and highlights its wood construction.



Figure D-402. A close-up view of the wood-panel walls of the closet.



Figure D-403. An overview of the interior of this bedroom, looking toward the corner closet (the door to the connected closet is at the right).

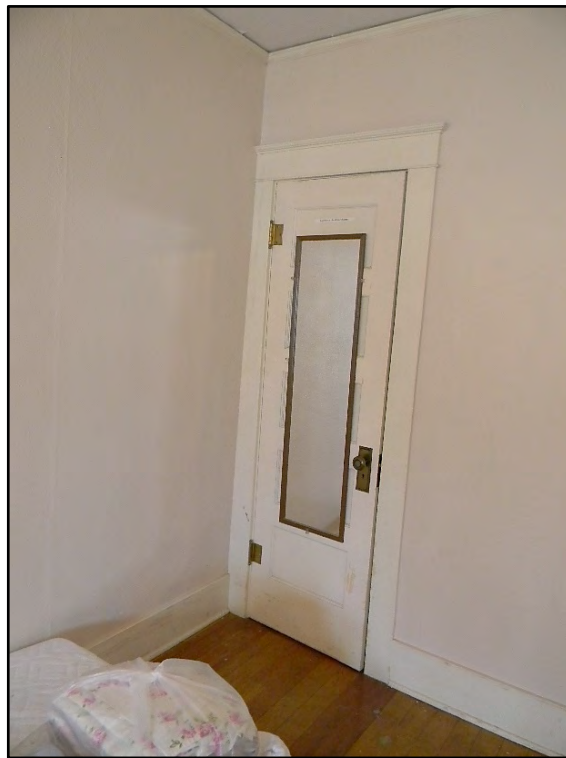


Figure D-404. The narrow corner closet of the third bedroom.



Figure D-405. An interior view of the corner closet of the third bedroom.



Figure D-406. An alternative view of the interior of the bedroom.



Figure D-407. The brass ceiling light fixture in the third bedroom.



Figure D-408. A close-up view of one of the wall sconces of the third bedroom.

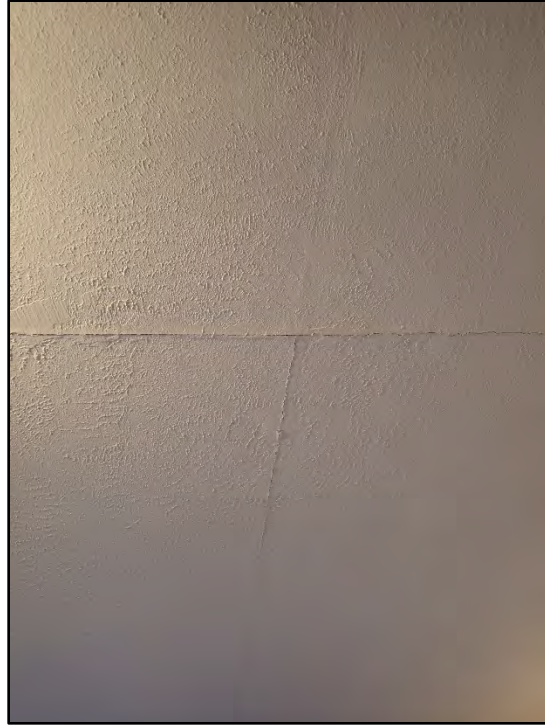


Figure D-409. The ceiling panels of the third bedroom are evident as it is suspected the ceiling is separating from the walls in this and other rooms throughout the house.



Figure D-410. A view toward the laundry room, which is located on the west side of the third bedroom (note the modern electric baseboard heater and ceiling register in this room).



Figure D-411. The narrow door to the laundry room.



Figure D-412. A peek into the laundry room (which was likely a small bath as originally constructed) as seen from the third bedroom.

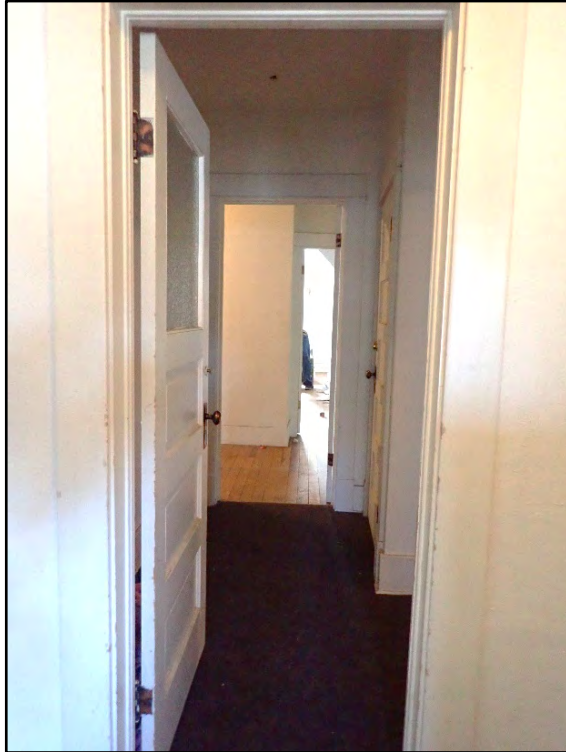


Figure D-413. Walking through the laundry room into the interior hallway.

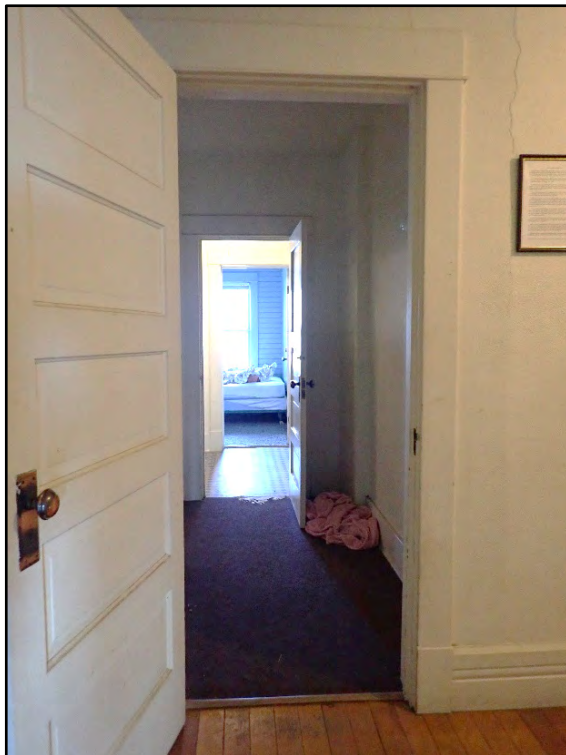


Figure D-414. Passing through the interior hall and looking back into it from the main hallway of the second floor (the sleeping porch is visible beyond).

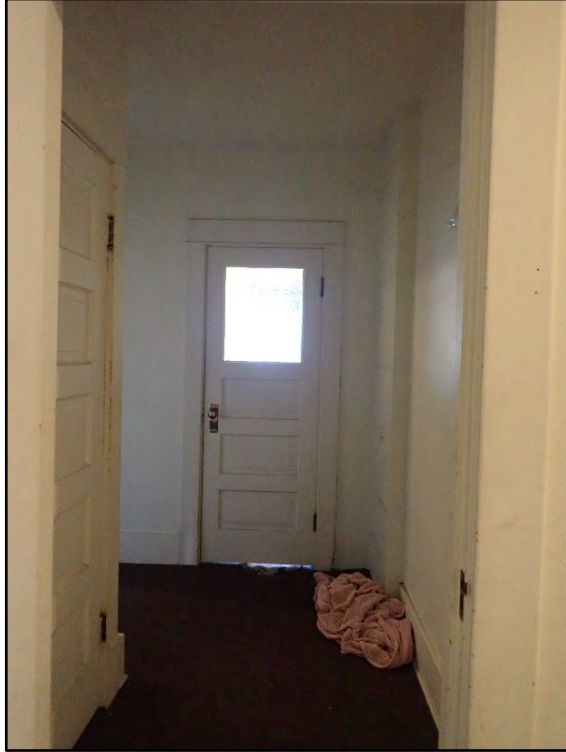


Figure D-415. A view of the closed door of the laundry room as seen from the main hallway.

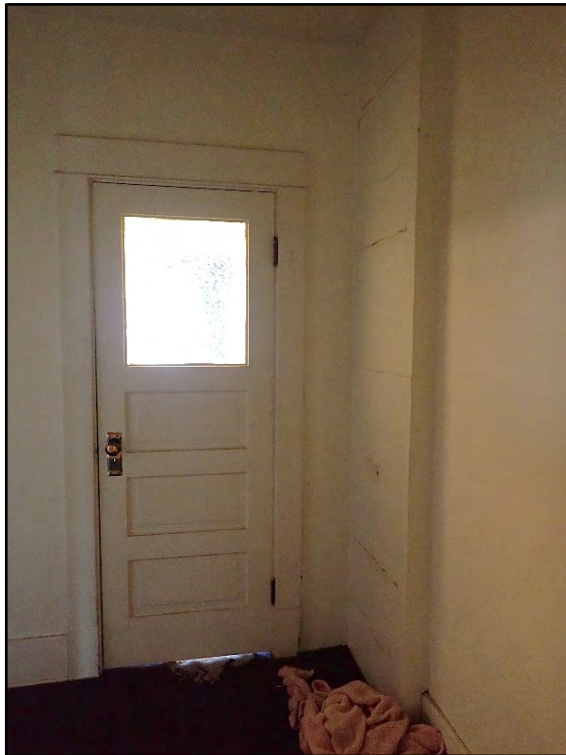


Figure D-416. A view of the closed laundry room door and interior hallway.

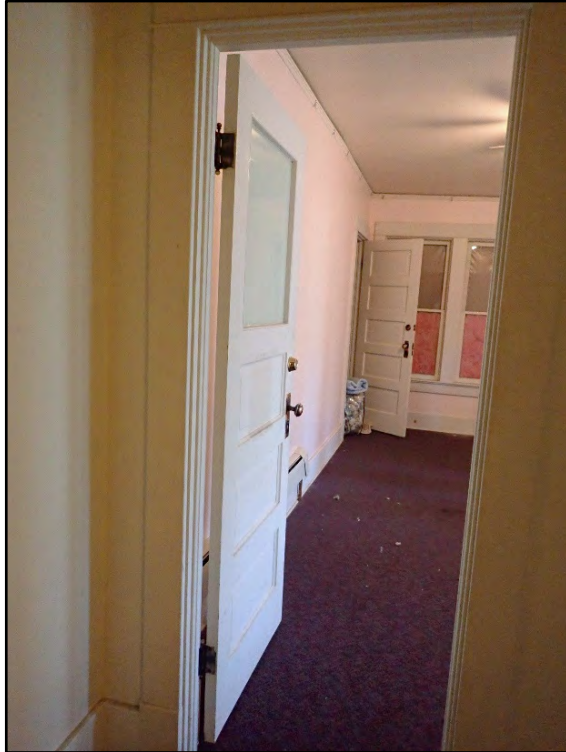


Figure D-417. Turning left, the interior bedroom can be seen from the interior hallway.



Figure D-418. Looking toward the corner closet and enclosed windows of the interior bedroom from the interior hallway.



Figure D-419. An overview of the interior bedroom, which was part of the renovation completed between 1910 and 1916, with the French doors to the sleeping porch seen at center.



Figure D-420. View of the corner of the interior bedroom with the windows to the sleeping porch.



Figure D-421. Detail view of the formerly exterior, wood-frame windows of the interior bedroom, spray painted over to obscure the view.



Figure D-422. View along the north wall of the interior bedroom.



Figure D-423. An alternate view of the interior of this bedroom toward the corner closet.

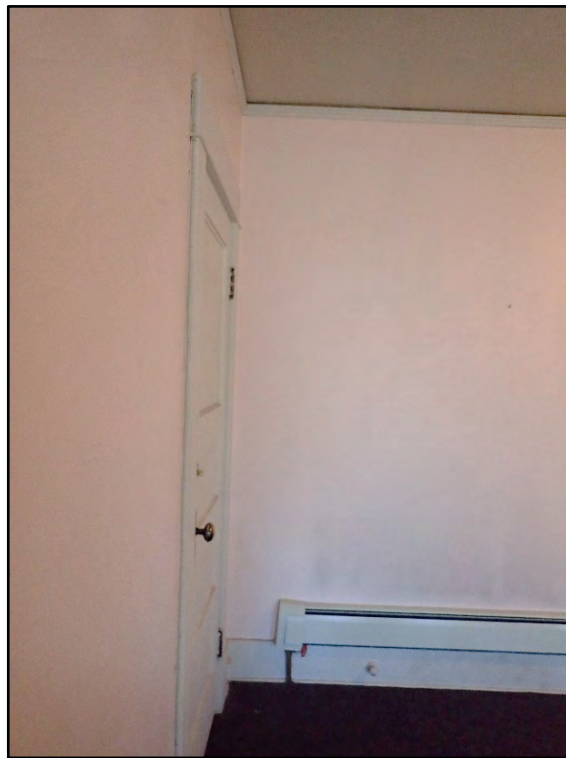


Figure D-424. A look back toward the hall door (note the visible gap between the top of the walls and ceiling, which are separating due to age).



Figure D-425. Alternative view of the interior of the bedroom (this is the door to the interior hallway).



Figure D-426. Overview of the French doors and windows to the sleeping porch.

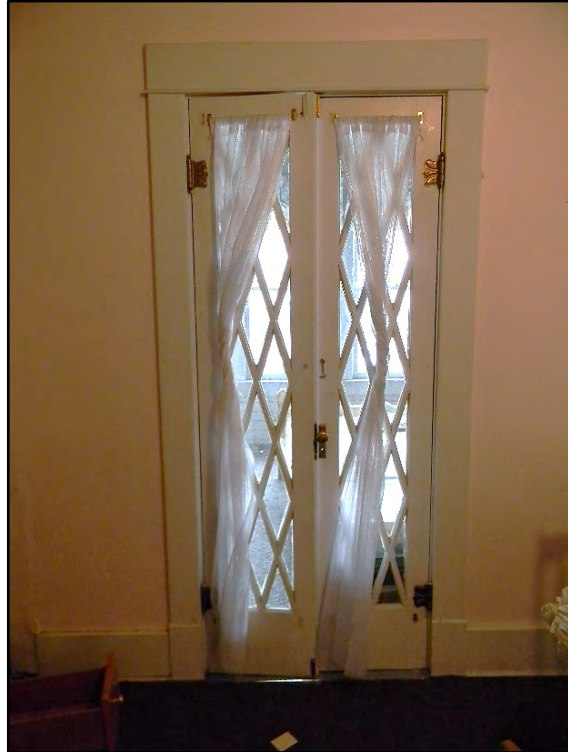


Figure D-427. Detailed view of the decorative French doors to the sleeping porch.



Figure D-428. A close-up view of the brass door hinges of the French doors.



Figure D-429. A close-up view of the original doorknob of the French doors to the sleeping porch.



Figure D-430. The sleeping porch as seen through the French doors of the interior bedroom.

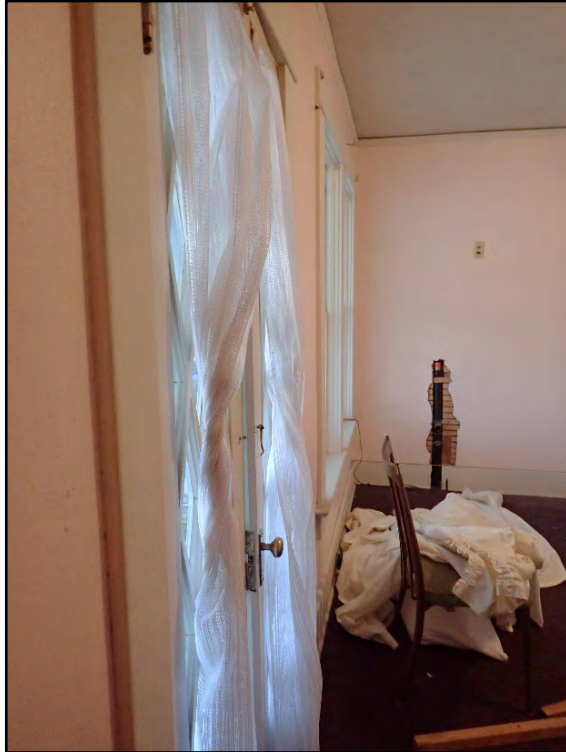


Figure D-431. An alternative view down the north wall of the interior bedroom.



Figure D-432. A look toward the corner closet of the interior bedroom.



Figure D-433. A detailed view of the once-exterior windows that have been filled in with insulation and covered over with drywall.



Figure D-434. A view of northwest corner of the interior bedroom.



Figure D-435. A view of the ceiling above the corner sink, which reveals portions of the ceiling and walls have been filled in with sheetrock/drywall.



Figure D-436. A peek into the corner closet of the interior bedroom.



Figure D-437. A view toward the hallway door in the southeast corner of the interior bedroom.



Figure D-438. Detail of the wood door trim as well as the upper molding which is indicating the ceiling may be separating from the walls.

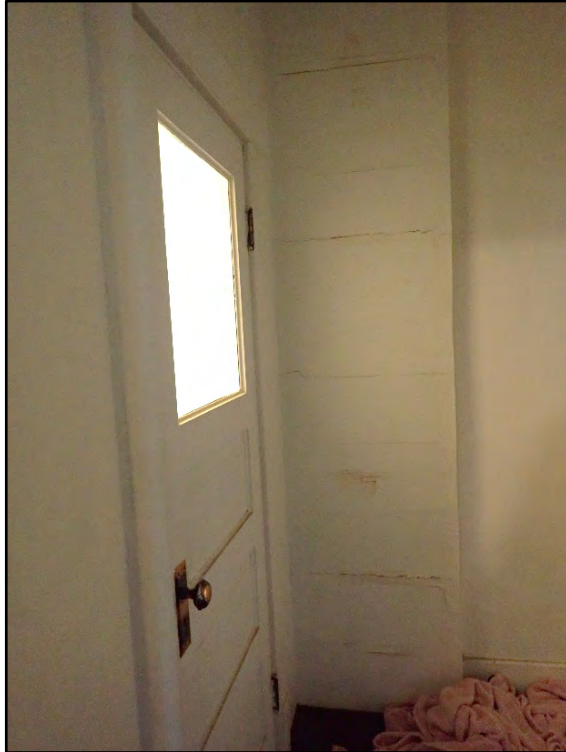


Figure D-439. Looking toward the laundry room door from outside the interior bedroom.



Figure D-440. The original wood panel door with privacy glass, suggesting this small space was once a bathroom.

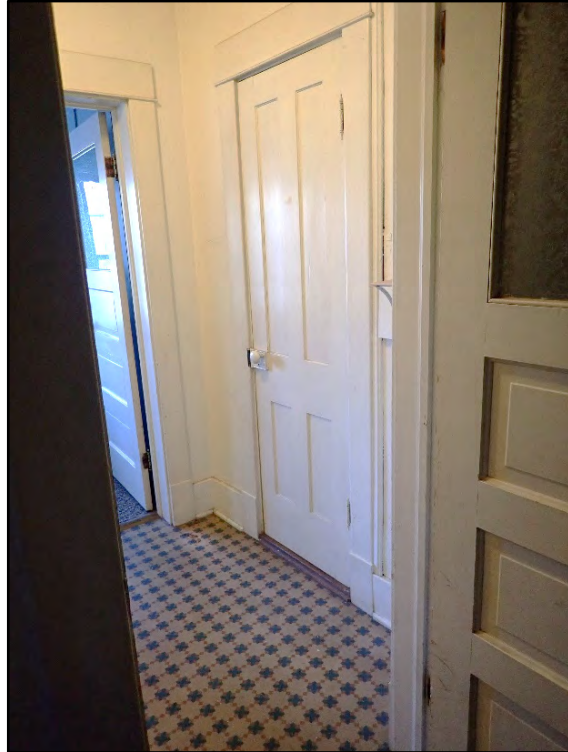


Figure D-441. View from the interior hall into the laundry room toward the door to the third bedroom.



Figure D-442. The opposite wall of the laundry provides a look into the sleeping porch.



Figure D-443. The door to the sleeping porch also has an upper panel of privacy glass.

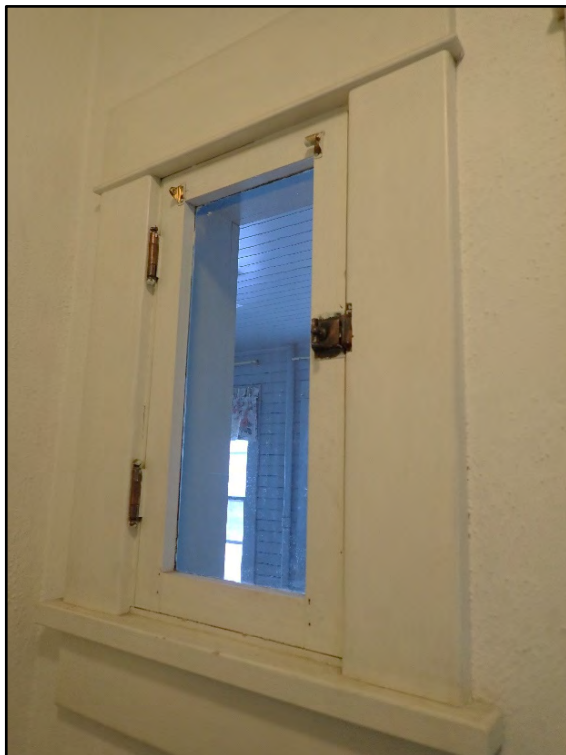


Figure D-444. A peculiarly small casement window in the laundry room.



Figure D-445. A detail view of the small casement window and oversized wood trim.



Figure D-446. A close-up view of the brass latch of the small casement window.



Figure D-447. The southwest corner of the laundry room (door jamb of the interior hallway to the left).



Figure D-448. A look back through the interior hall into the main hallway (and the fourth bedroom on the second floor in the background).



Figure D-449. An alternative view of the door to the interior hallway as seen from inside the laundry room.



Figure D-450. The interior of the door to the third bedroom within the laundry room.



Figure D-451. The door between the third bedroom and the laundry room.



Figure D-452. A close-up view of the doorknob and lock to the third bedroom.



Figure D-453. A close-up view of the historic-era linoleum and original hardwood floors between the third bedroom and laundry room on the second floor.



Figure D-454. A peek through the laundry room into the sleeping porch as seen from the doorway to the third bedroom.



Figure D-455. The door and window of the laundry room as seen from the interior of the sleeping porch.

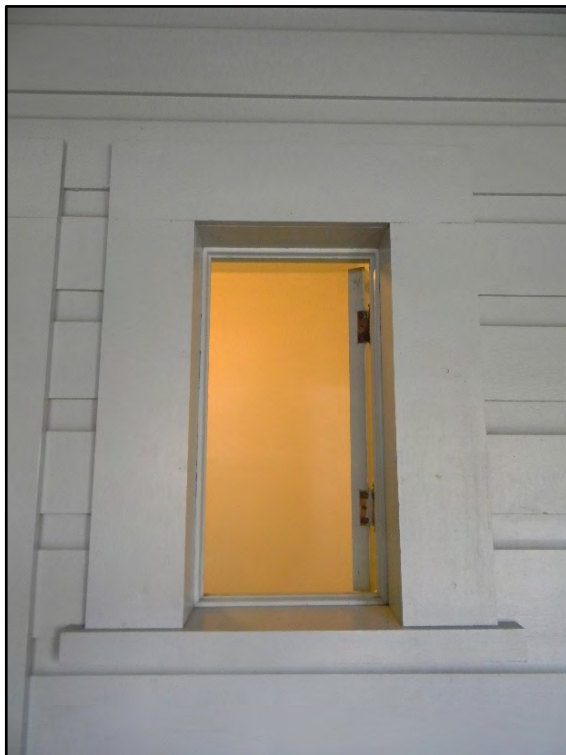


Figure D-456. Detail of the small casement window of the laundry room.



Figure D-457. View from the door to the laundry room into the sleeping porch.



Figure D-458. View down the windows of the sleeping porch which faces West Dale Avenue.



Figure D-459. Overview of the interior of the sleeping porch.



Figure D-460. Detail of the windows to the interior bedroom as seen from the sleeping porch.



Figure D-461. Overview of the interior of the sleeping porch looking back toward the laundry room door, showing the original drop siding of the expansion completed between 1910 and 1916 by David Babbitt.



Figure D-462. Alternative view of the interior of the sleeping porch toward the small bedroom in the northwest corner of the residence.

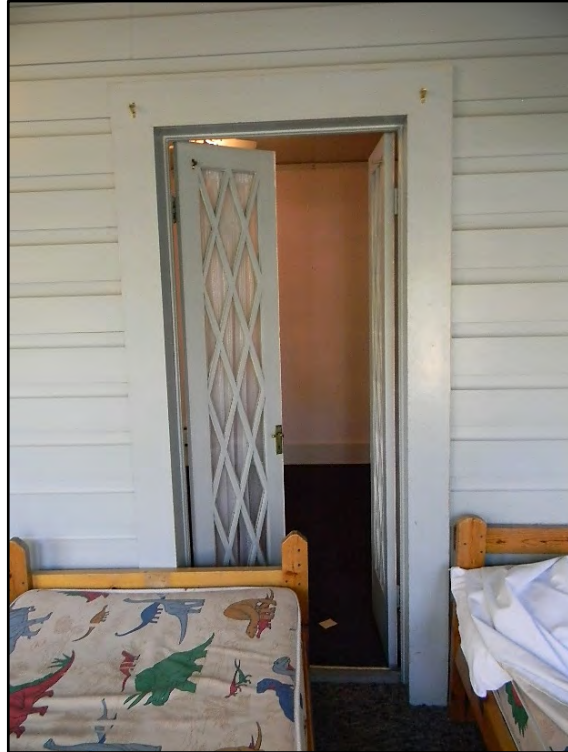


Figure D-463. A glance into the interior bedroom from the sleeping porch.

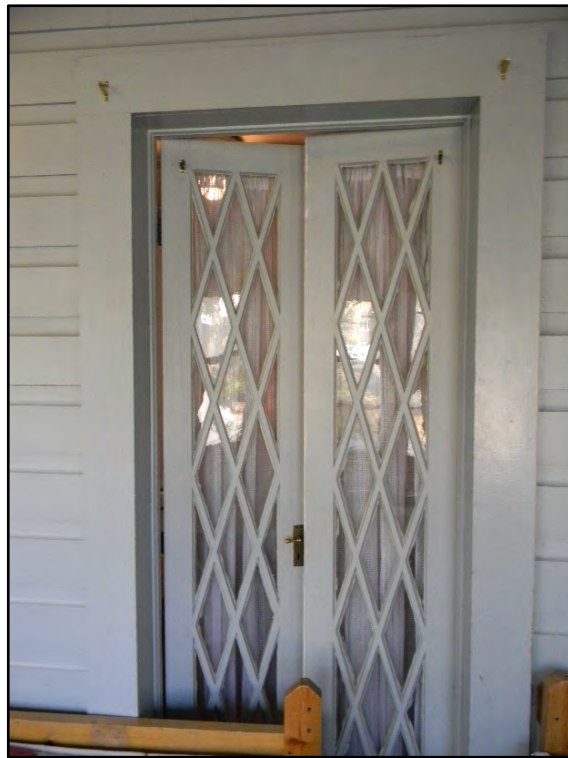


Figure D-464. Another view of the French doors.



Figure D-465. View of the corner of the sleeping porch, revealing the wood construction as built between 1910 and 1916.



Figure D-466. View back toward the east side of the sleeping porch.



Figure D-467. Detail of the wood panel ceiling of the sleeping porch.



Figure D-468. View into the sleeping porch from the first small bedroom on the second floor.



Figure D-469. The row of continuous windows between the sleeping porch and the first small room facing West Dale Avenue.



Figure D-470. View of the corner of the first small room on the second floor, created when this sleeping porch was divided into smaller spaces.



Figure D-471. Overview of the first small room, with the modern sheetrock/drywall on the left installed to divide up the sleeping porch on this side of the house.

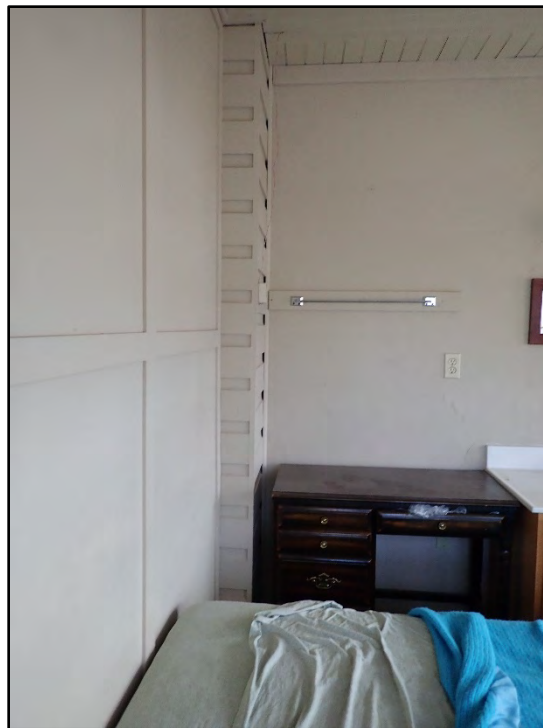


Figure D-472. View of the corner of this small room, showing the comparison of the original wood construction on the left and modern sheetrock/drywall on the right.



Figure D-473. View of the south wall of the first small room, showing the modern dividing wall, hollow-core door, and other upgraded amenities.



Figure D-474. An alternative view of the corner of the small room.



Figure D-475. Looking toward the same corner from the door to the next small room.



Figure D-476. Overview of the interior of the first small bedroom toward the door to the sleeping porch.



Figure D-477. A view along the west side windows toward West Dale Avenue, showing the corner of the second sleeping porch.



Figure D-478. An overview of the interior of the second small room, looking toward the south wall (the original window of the interior bedroom that are now covered up are under the sheetrock/drywall on the left).



Figure D-479. View of the row of three original windows in this part of the former sleeping porch, with the midcentury Catholic school visible outside.



Figure D-480. Detail view of the south wall of the second small bedroom, showing the modern building materials and amenities (including upgraded electrical wiring).



Figure D-481. An alternative overview of the interior of the second small room, looking back toward the first small room (note the modern drywall covering the original wood wall on the right).



Figure D-482. Detail of the modern ceiling fan and heating register in the second small room.



Figure D-483. View of the south wall of the sitting area, which consists of modern materials, with the door to the modern bath at left and storage area for the small furnace and water heater on the right.

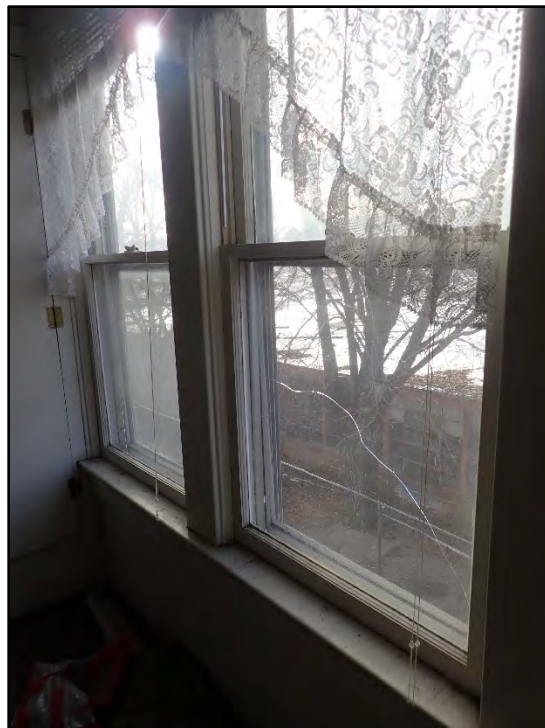


Figure D-484. A glance through the original windows of the sitting area (installed as part of the 1910–1916 addition) with the former Catholic school outside.



Figure D-485. A look back toward the door to the second small room, showing the modern sheetrock/drywall installed to divide up the former sleeping porch.



Figure D-486. The original windows of the west wall of the small sitting area on the second floor (on the west side of the residence).



Figure D-487. View of the door to the modern bath with an upgraded electrical box next to it.



Figure D-488. Looking into the modern bath, which was constructed by dividing up the sleeping porch along the west side of the second floor.

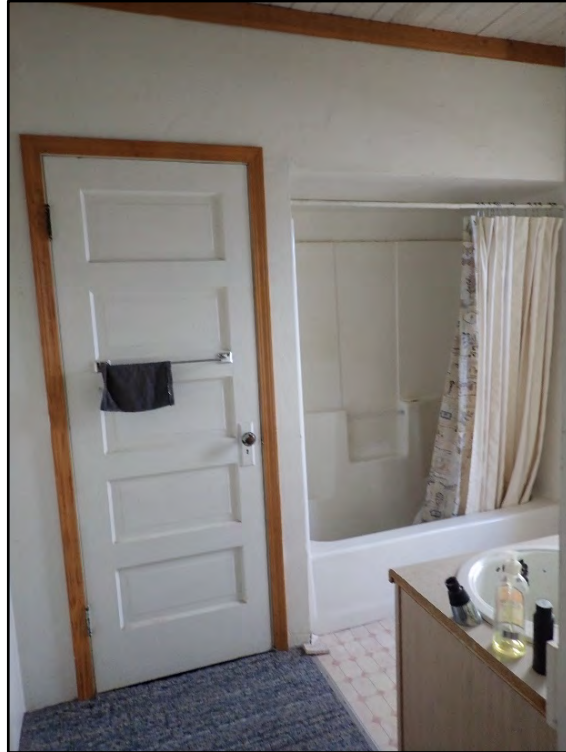


Figure D-489. A view of the interior of the modern bath.



Figure D-490. A detail view of the modern tub/shower combination.

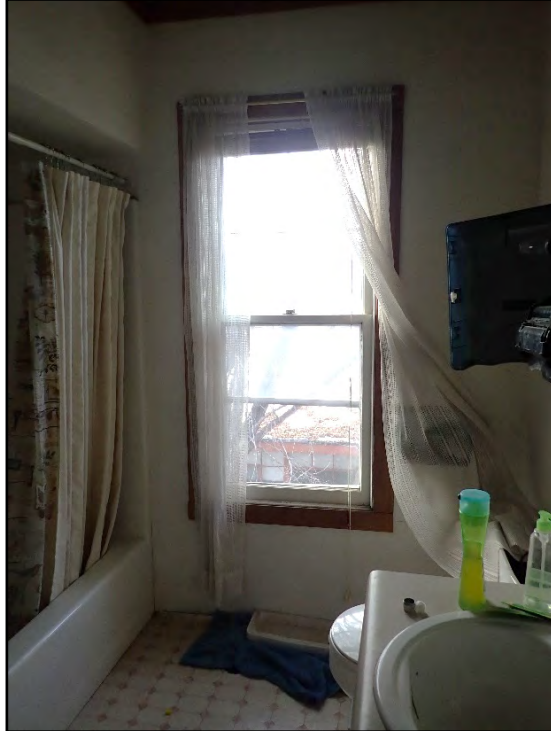


Figure D-491. The solitary single wood-frame window in the modern bath, which is part of the original construction at this end of the home.



Figure D-492. The modern bathroom amenities affixed to modern sheetrock/drywall which houses the water heater and small furnace in the adjacent sitting area.



Figure D-493. Detail view of the original ceiling and exterior wall juxtaposed with modern materials incorporated when the modern bath was constructed.



Figure D-494. A repurposed door fit into the modern sheetrock/drywall construction that closes off a small storage area behind the tub/shower.



Figure D-495. The interior of the storage area reveals the modern drywall behind the tub/shower.



Figure D-496. The modern framing above the tub/shower.



Figure D-497. Interior of the small storage area behind the tub/shower with the original wood batten paneling on the walls and floor.



Figure D-498. The original drop siding and wood paneling of this small space, which is part of the construction completed between 1910 and 1916.



Figure D-499. A glance back toward the small sitting room.



Figure D-500. Detail view of the original wood construction of the ceiling with the modern drywall and trim.



Figure D-501. View of the modern bath looking toward the door to the small sitting area.



Figure D-502. Looking into the small sitting area through the door to the modern bath.



Figure D-503. Overview of the interior of the small sitting room.



Figure D-504. Detail view of the once-exterior door that provided access to the sleeping porch that once stretched the length of the west side of the residence on the second floor.



Figure D-505. Detail view of the original wood construction of the former sleeping porch (note the drop siding) with the modern drywall on the left.



Figure D-506. A look down the main hallway on the second floor as seen from the former sleeping porch.



Figure D-507. The interior of the sitting room as seen from the main hallway.



Figure D-508. Within the main hallway, the door to the large bath is visible on the right.

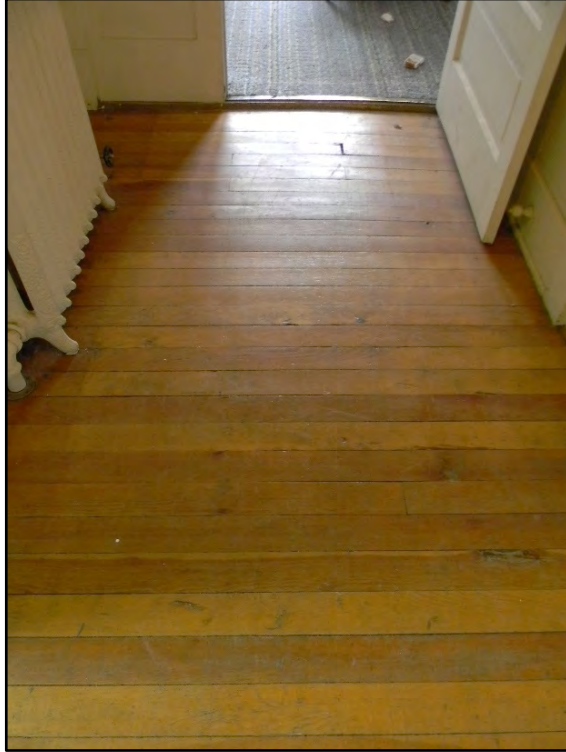


Figure D-509. Detail of the original hardwood floors on the west end of the main hallway near the small sitting room.



Figure D-510. The brass ceiling light figures with modern spiral CFL lightbulb.



Figure D-511. Looking back down the hallway into the sitting room (the large bath is to the left in this image).



Figure D-512. Peeking into the large bath on the second floor.



Figure D-513. A view of the door to the small toilet area, which is part of the original construction of the large bath (completed by 1901).



Figure D-514. View of the corner of the large bath (door to the hallway is on the right and small toilet area on the left).



Figure D-515. A detailed view of the ceiling-wall junction showing the curved design of this wall.



Figure D-516. A detailed view of the floor-wall junction of the same wall, also showing its curved design (the linoleum likely covers original hardwood floors).



Figure D-517. A view of the interior of the small toilet area.



Figure D-518. Detail of the floor of the toilet area, showing the back of the curved wall (note the missing baseboard suggests this was reconfigured or renovated after it was completed).



Figure D-519. Detail of the original window and door to the small toilet area that are now closed off (the shower room is on the other side of the door on the left and the modern bath is behind the small upper window).

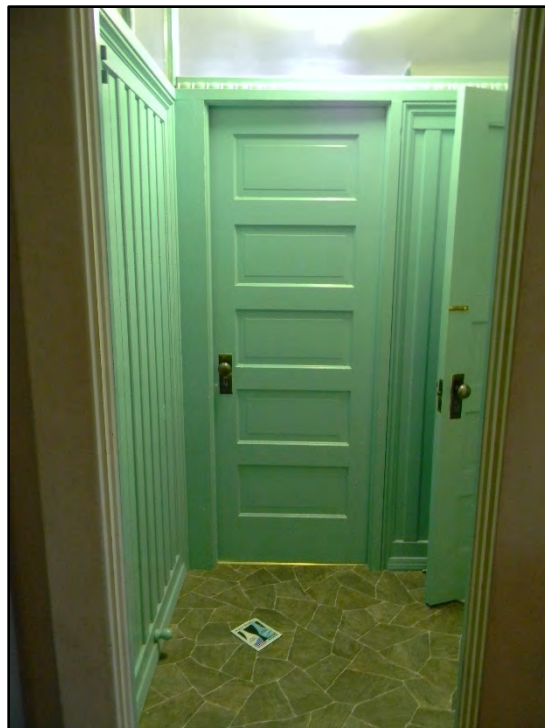


Figure D-520. View of the interior door of the large bath, framed by decorative wood panels on either side (door to the small toilet area is open to the right).



Figure D-521. View of the other side of the same door, showing the decorative wood construction and creative detailing in the large bath.



Figure D-522. View of the original door to what is now a separate shower.



Figure D-523. A peek into the shower room reveals the back of the now closed-off door in the small area of the separate toilet.



Figure D-524. The interior of the separate shower, showing yet another doorway that has since been closed off (also into the modern bath).



Figure D-525. Detail view of the separate shower that now fills in the space between the modern bath and large bath.



Figure D-526. The original decorative panel above the door to the separate shower.



Figure D-527. Overview of the interior of the large bath as seen from the doorway to the separate shower.



Figure D-528. View of the large bath (east wall), showing the wood wainscoting and other decorative details original to the bathroom when constructed by 1901.



Figure D-529. Detail view of the decorative wainscot panels and corner accents.



Figure D-530. The opulent clawfoot tub that may be original to the home.



Figure D-531. Close-up view of the fish-shaped foot of the clawfoot tub.



Figure D-532. View of the clawfoot tub and wood-paneled wall.



Figure D-533. Detail of the wood accent on the corner of the cut in of the ceiling formed by the framing of the dormer (which was constructed by 1901 and is seen in the 1906 photographs in Appendix B).



Figure D-534. Close-up view of the window casings and corner block in the large bath.



Figure D-535. The large radiator under the paired windows of the large bath.



Figure D-536. View of the paired windows in the gable end framed by the shape of the ceilings and walls of the hipped-roof dormer.