

**APPENDIX D**

**Interior Photographs of the David Babbitt House  
(319 North Beaver Street)**

**Section 5 of 6**





**Figure D-537. Exterior of the small closet in the large bath.**



**Figure D-538. A view of the interior of the small closet, with the upper pass-through glass panels above.**



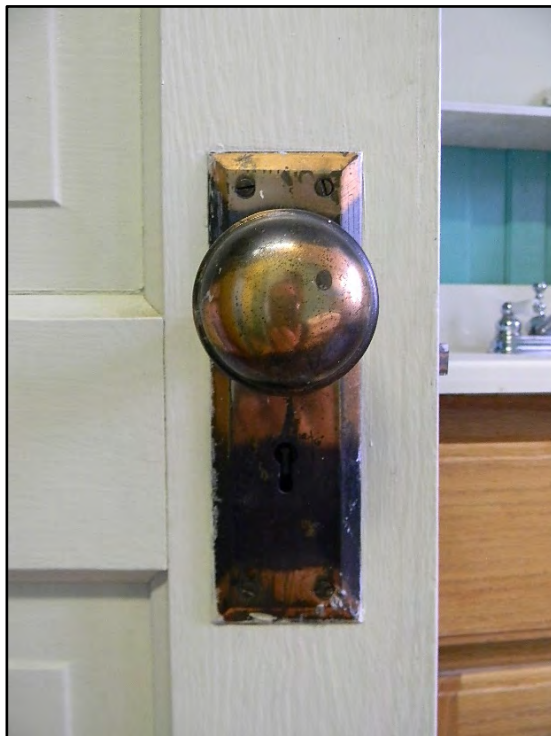
**Figure D-539. Detail view of the upper glass panels of the small closet, indicating the space was likely intended to be used and occupied because of the need for interior light.**



**Figure D-540. An alternative view of the upper glass panels as seen from the interior of what is now a small closet in the large bath.**



**Figure D-541.** The far wall of the small closet reveals what was once a door with an upper glass pane, which now leads to a small hall closet in the main hallway.



**Figure D-542.** Close-up view of the copper doorknob of the closet door in the large bath.



**Figure D-543. A look down the main hallway of the second floor as seen from just outside the large bath.**



**Figure D-544. View of the main hallway looking back down toward the small sitting area.**



**Figure D-545. Cracks in the lath-and-plaster walls and ceilings on the second floor are visible.**



**Figure D-546. Another view of the east end of the second floor main hallway, with the door on the left to the third bedroom.**



**Figure D-547. Turning to the right, this wall represents two chimneys, one of which goes to the formal living room (the other down to the basement), with the door to the fourth bedroom on the right.**



**Figure D-548. View into the fourth bedroom as seen from the main hallway.**



**Figure D-549. The west side of the fourth bedroom on the second floor.**



**Figure D-550. An overview of the interior of the fourth bedroom, which was constructed above the formal living room by 1901.**



**Figure D-551. A view of the opposite corner on the east wall of the bedroom.**



**Figure D-552. The south end of the bedroom, shaped as a result of the large gable end built by 1901 (and is visible in the 1906 photographs in Appendix B).**



**Figure D-553. A view of the shape of the west corner near the windows, shaped as such because of the canted walls of the bay windows on the first floor.**



**Figure D-554. View of the opposite corner, revealing the same canted shape, with the decorative trim around the windows and baseboards.**



**Figure D-555. Similar to other rooms, a small radiator sits in the corner of the bedroom.**



**Figure D-556. An alternate view of the canted walls of the cutaway bay.**



**Figure D-557. Overview of the interior of the fourth bedroom looking toward the small closet and door to the main hallway.**



**Figure D-558. View from the radiator toward the front of the room.**



**Figure D-559. View along the windows in the gable end.**



**Figure D-560. Alternative overview of the interior of the bedroom.**



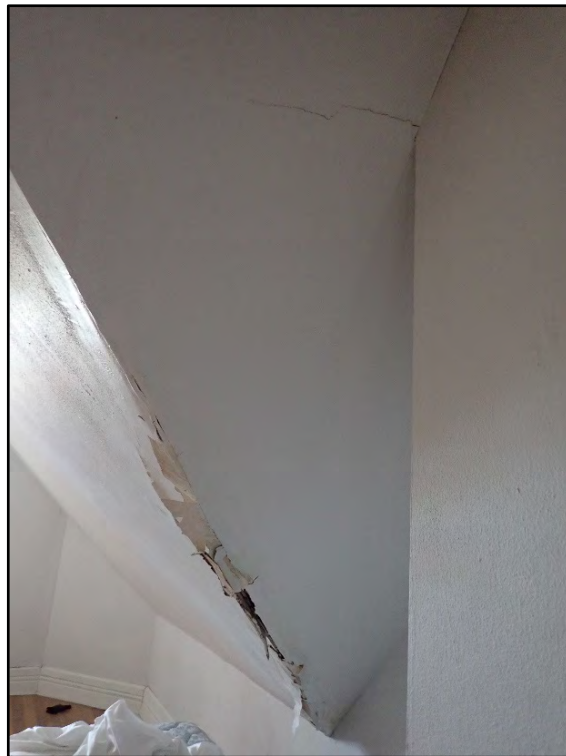
**Figure D-561. A look back toward the door to the main hallway.**



**Figure D-562. Detail view of the deterioration and water damage that is present in the fourth bedroom.**



**Figure D-563. A close-up view of the rotting wood and ceiling damage.**



**Figure D-564. Alternative view of the damage to the ceiling as a result of a roof breach.**



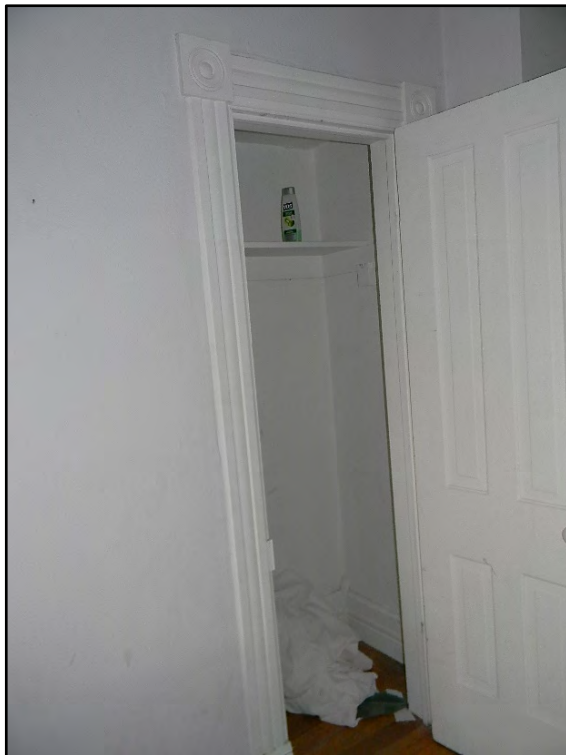
**Figure D-565. View of the angled ceiling and wall on the east side of the bedroom (note the cracking and separation at the ceiling juncture).**



**Figure D-566. Alternate overview of the interior of the room.**



**Figure D-567. View of the corner closet of the large fourth bedroom.**



**Figure D-568. A glance into the interior of the small closet, with the decorative wood casings and corner blocks.**



**Figure D-569. Close-up view of the architrave and corner block of the closet.**



**Figure D-570. Close-up view of the door and door lock to the small closet which is the same type as that seen in the laundry room.**



**Figure D-571. A detail view of the windows of the large upper gable.**



**Figure D-572. A close-up view of the brass window latch.**



**Figure D-573.** A close-up view of the window mechanism that opens the lower sash via a rope.



**Figure D-574.** Close-up view of the ceiling light fixture of the fourth bedroom on the second floor.



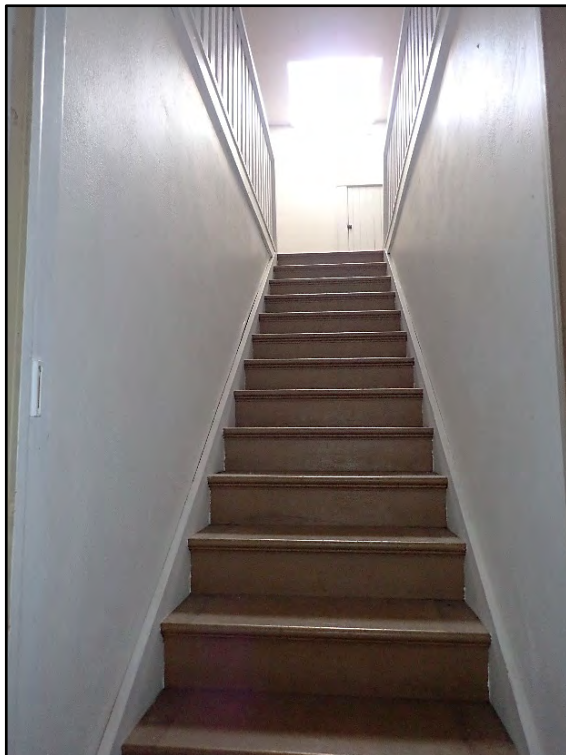
**Figure D-575. Across from the fourth bedroom is the door to the interior hallway.**



**Figure D-576. Circling back into the interior hallway, the laundry room and sleeping porch can be seen at the back, with the door to the third floor/attic on the left.**



**Figure D-577. The door to the third floor/attic staircase.**



**Figure D-578. Up the stairs to the third floor/attic, which was constructed between 1910 and 1916 by David Babbitt.**



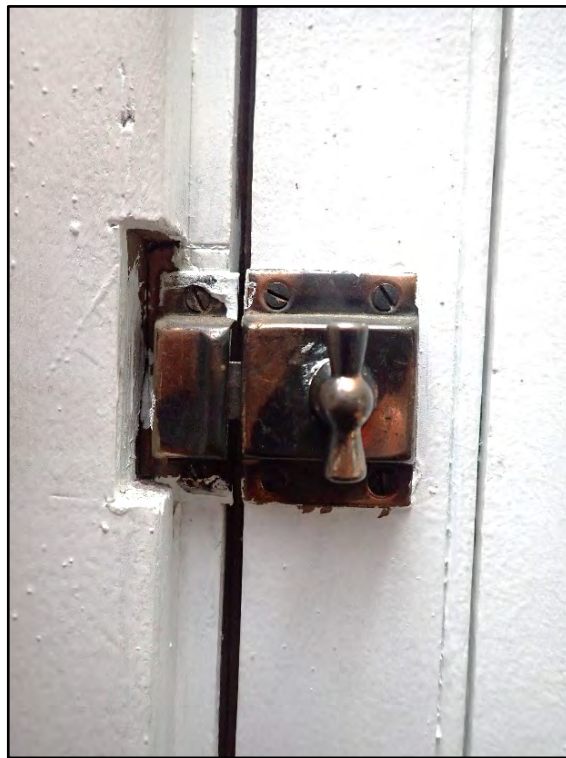
**Figure D-579.** The batten door at the top of the stairs, also trimmed with care.



**Figure D-580.** The uppermost story of the residence is marked by this solitary window in the gable, which is the only source of natural light on the third floor/attic.



**Figure D-581. The sill and apron of the window and the cap trim of the door frame the cracking of the original lath-and-plaster walls.**



**Figure D-582. Close-up view of the latch on the batten door, which is the same as that on the window in the laundry room.**



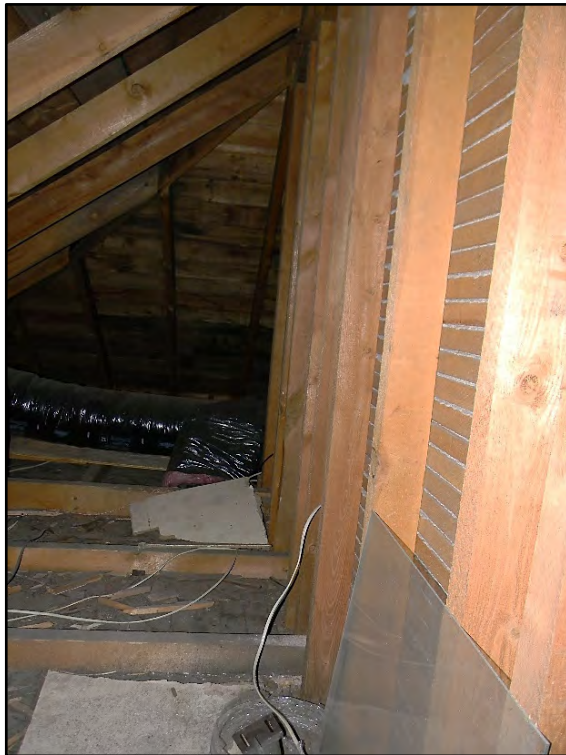
**Figure D-583. The batten door with diagonal bracing that provides a peek into the construction of the home between 1910 and 1916.**



**Figure D-584. The original twentieth century electrical wiring is visible here.**



**Figure D-585. The high-level of craftsmanship in the construction of the lath-and-plaster walls is clearly evident in this space.**



**Figure D-586. A glance toward the northwest corner of the third floor reveals the framing and roof construction, which was completed by 1916.**



**Figure D-587. Another view of the original electrical wiring that is still present in the residence.**



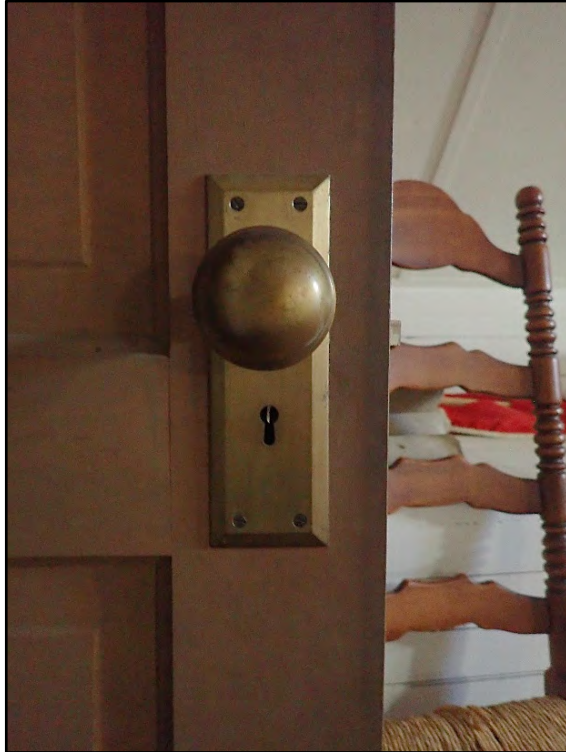
**Figure D-588. Overview of the interior of the third floor/attic.**



**Figure D-589. Looking to the east wall of the third floor/attic toward another door that provides yet another glance into the past of the David Babbitt house.**



**Figure D-590. The solid-core wood panel door at the east end of the third floor room.**



**Figure D-591. A close-up view of the brass door hardware.**



**Figure D-592. A peek into the dark void of the third floor.**



**Figure D-593.** The original hipped roof and wood shingles seen in the 1906 photographs (see Appendix B) hide beneath the roof expansion that was completed by 1916.



**Figure D-594.** The plank-and-rafter construction of the roof as completed between 1910 and 1916 when David Babbitt expanded his residence, which has protected the original roof for well over 100 years.



**Figure D-595. Additional view of the roof framing as well as the historic-era electrical wiring in the attic space.**



**Figure D-596. A look behind the chimney into the southern portion of the third floor attic space.**



**Figure D-597. A view of the double chimney that is visible in the 1906 photographs (one on the left goes to the basement while the other is for the fireplace in the formal living room).**



**Figure D-598. This image shows how the original 1886 hipped roof (seen in some of the 1906 photographs) was configured.**



**Figure D-599. Detail view of the original hardwood floor of the third floor as it extends into the attic space.**



**Figure D-600. An alternate view of the interior of the finished third floor room.**



**Figure D-601. Overview of the interior as seen from the northeast corner.**



**Figure D-602. View of the south wall of the third floor, showing a built-in bench that extend the length of the wall.**



**Figure D-603. View of the ceiling and the modern light fixture at the center of the room.**



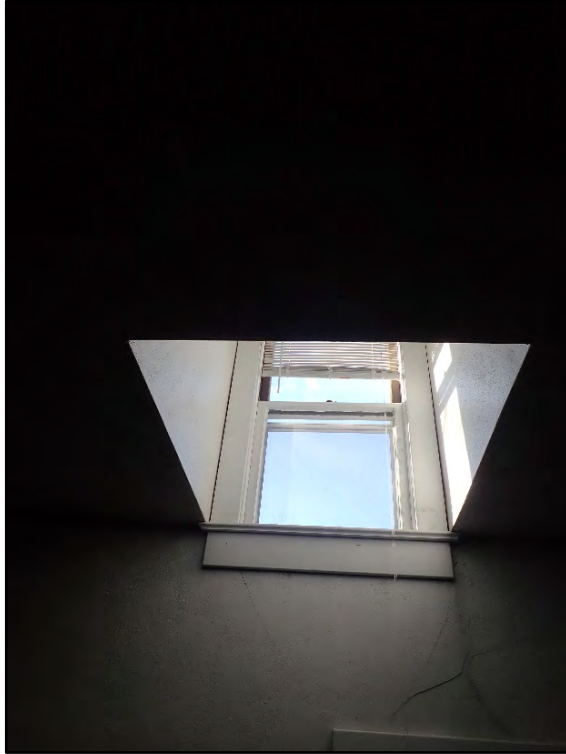
**Figure D-604. The removal of a substantial section of original wall on the third floor is indicated by the outline of the modern drywall, upgraded electrical outlet and ceiling light fixture.**



**Figure D-605. A large wood dresser that was likely assembled in place is located at the northeast corner of the third floor.**



**Figure D-606. Cracks and peeled paper affixed to the wall show past repairs and the current condition of this section of the third floor at the northwest corner of the room.**



**Figure D-607. The outline of the ceiling of the third floor below the upper gable window.**



**Figure D-608. Looking down the stairs from the third floor, heading back to the lower floors of the residence.**



**Figure D-609. Returning to the first floor outside the chapel, this image shows the door to the basement in the foreground on the right (with the fourth bedroom at the rear next to the connected bath to the right).**



**Figure D-610. The steps descending down into the partial basement.**



**Figure D-611. Detail view of the stair treads, that likely date to the original construction of the home in 1886.**



**Figure D-612. A look at the framing and building materials of the partial basement and under the main staircase.**



**Figure D-613. A close-up view of the wood framing and brick construction under the main staircase to the second floor as seen within the basement.**



**Figure D-614. Close-up view of the original hardwood floors of the entrance hall as extended under the main staircase.**



**Figure D-615. A peek into the main area of the partial basement beyond the stairs.**



**Figure D-616. The main basement support at the center of the basement.**



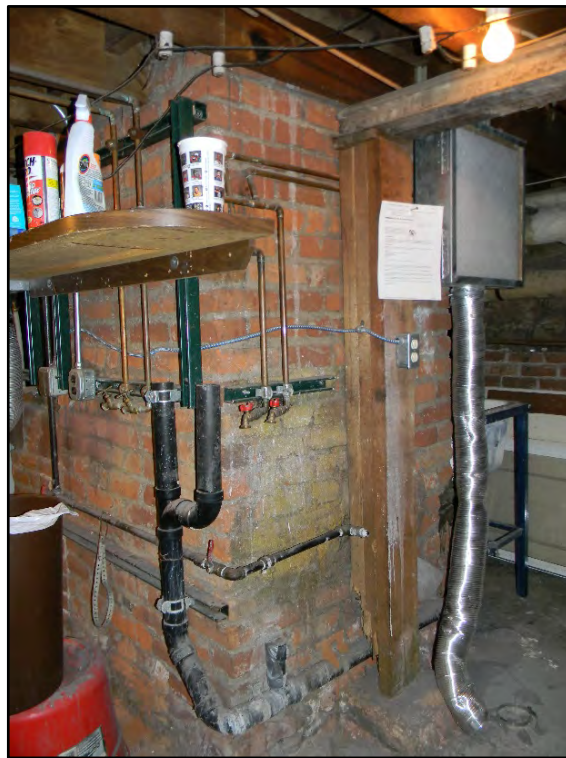
**Figure D-617. The chimney that extends down to the basement as seen on the third floor terminates here, behind the metal door at the center of this image.**



**Figure D-618. What is likely the original steam boiler of the residence that feeds to all of the decorative radiators throughout the first and second floors.**



**Figure D-619. Modern water heaters installed next to the original brick-and-mortar components of the basement.**



**Figure D-620. View of the rear of the brick firebox and chimney that extends up to the third floor.**



**Figure D-621. A hodgepodge of old and new as seen in the basement.**



**Figure D-622. Modern ducts and utilities weave throughout the basement space.**



**Figure D-623. Areas of the basement also exhibit sections of brick retaining walls, as seen here.**



**Figure D-624. The floor system of the formal living room, with both historic-era and modern electrical wiring strung underneath.**



**Figure D-625. Sections of steel rail have been incorporated into the structural framework of the basement.**



**Figure D-626. Flooring joists with crisscrossing diaphragms are visible under the formal living room, which is likely original to its construction (completed by 1901).**



**Figure D-627. The patchwork of materials is also illustrated here with the historic-era wood, rubble-and-mortar, and brickwork, with the modern concrete block retaining wall (note the shoring jack at the back).**



**Figure D-628. The shape of the cant bay above of the formal living room can be seen here in the basement, which has been reinforced by a modern concrete block retaining wall.**



**Figure D-629. A peek behind the Moenkopi red sandstone stem wall of the cant bay window that supports the floor system of the formal living room.**



**Figure D-630. Shoring jacks have been installed to prevent the collapse of the formal living room, which is structurally compromised.**



**Figure D-631. A detail view of the shoring jacks which now support this part of the first floor under the formal living room.**



**Figure D-632. The structural sandstone walls likely constructed when the house was expanded between 1895 and 1901.**



**Figure D-633. A portion of the basement below what is now the dining room.**



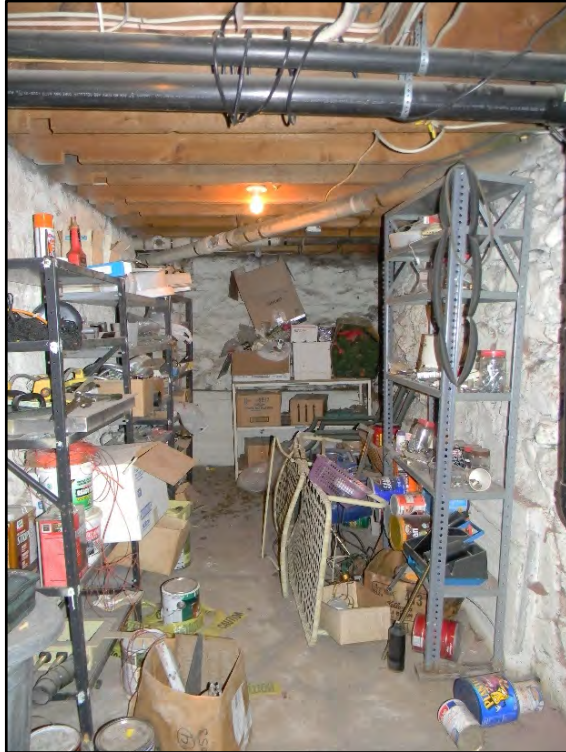
**Figure D-634. Additional view of the space below the dining room (the masonry walls are painted).**



**Figure D-635. A detail view of the former exterior window now boarded up below the dining room area (note the brick stem wall above).**



**Figure D-636. Alternative view of the brick stem wall supporting the floor joists of the dining room.**



**Figure D-637. A glance back into the basement space below the dining room.**



**Figure D-638. The sump pump and pit that drains water out of the basement.**



**Figure D-639. View of the southwest corner of the basement, showing the rubble masonry construction adjacent to the door that was accessible via the cellar door below the kitchen window on the exterior.**



**Figure D-640. View of the now boarded-over window below the kitchen as well as the rubble masonry construction of this end of the house, completed between 1910 and 1916.**



**Figure D-641. The west side of the basement, showing the extent of the sandstone construction of the phase of renovation that occurred between 1895 and 1901 on the right.**



**Figure D-642. An opening through the original sandstone masonry walls that were completed by 1901 when David Babbitt expanded his residence.**



**Figure D-643.** An additional view through the same wall opening toward the east side of the partial basement.



**Figure D-644.** Turning to the left, this image shows the northwest portion of the basement as constructed between 1910 and 1916, with the 1901 extent of the home visible on the right (this is below the kitchen and chapel).



**Figure D-645. A modular wall is seen through an opening in the 1895–1901 basement wall.**



**Figure D-646. The workmanship of the construction of this portion of the basement (completed by 1901) is still clearly visible today.**



**Figure D-647. Another section of masonry wall in the basement representing the extent of the house as seen in the 1906 photographs in Appendix B.**



**Figure D-648. A view facing what is likely the circular well/cistern seen on the 1895 Sanborn map on the west side of the residence.**



**Figure D-649. Detail view of what may have been the original well, now filled in with concrete and covered up by the last major extension of the residential footprint (completed by 1916).**



**Figure D-650. Detail view of the masonry construction of the circular well/cistern now below the chapel.**



**Figure D-651. An additional detailed view of the upper portions of the circular well/cistern in the basement.**



**Figure D-652. Surplus decorative radiators are stored within the circular outline of the former well/cistern.**



**Figure D-653. The intriguing profile of the walls of the former well/cistern are evident here, as is the historic-era brick construction adjacent.**



**Figure D-654. A glance back down the west side of the residence as seen in the basement, with the 1901 extent of the house on the left in this image.**



**Figure D-655. View toward the center of the residence (eastern portion of the partial basement) with the stairs up to the first floor shown.**



**Figure D-656. A peek through a hole in the central basement wall, which may have been constructed as part of the original 1886 residence.**