

Addendum

- Mounting Detail Type A
Typical Wall Installation
- Mounting Detail Type C
Typical Beam Installation
- Mounting Detail Type HB
Soffet Mounted Hanging
Blade Sign

NOTE

Tenant sign envelopes shown are meant to represent potential sign locations.

The sign area for each business within a multi-tenant building, development, or shopping center shall not exceed one and one-half (1½) square feet for each linear foot of the building frontage of the primary entrance location of the individual occupant, up to an aggregate sign area, not to exceed one hundred fifty (150) square feet maximum per business.

For businesses having auxiliary building elevations fronting on two or more streets, only the primary entrance frontage is measured as described in the provision noted above. Auxiliary elevations of such businesses are permitted sign area not to exceed one-half (½) square foot for each linear foot of building frontage where the individual business has frontage, to a maximum of eighty (80) square feet*. However, the aggregate sign area permitted for all building elevations for a single tenant in a multi-tenant building, development, or shopping center is two hundred (200) square feet maximum*.

Building mounted wall signs shall not extend horizontally a distance greater than sixty percent (60%) of the width of the building wall on which it is displayed.

Sign is located above the primary residential entrance.

Signs mounted above the trellis/canopy shall not extend horizontally a distance greater than eighty percent (80%) of the width of the tenant wall on which it is displayed.

For signs with multiple lines of copy, spacing between lines must not be less than half of the height of the smallest line of copy.

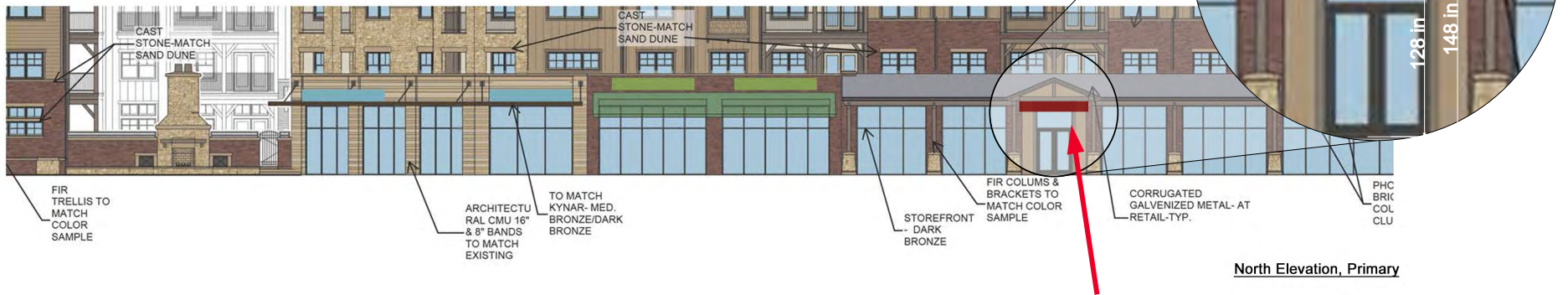
Signs shall be centered top to bottom and left to right within the Tenant Sign Envelopes.

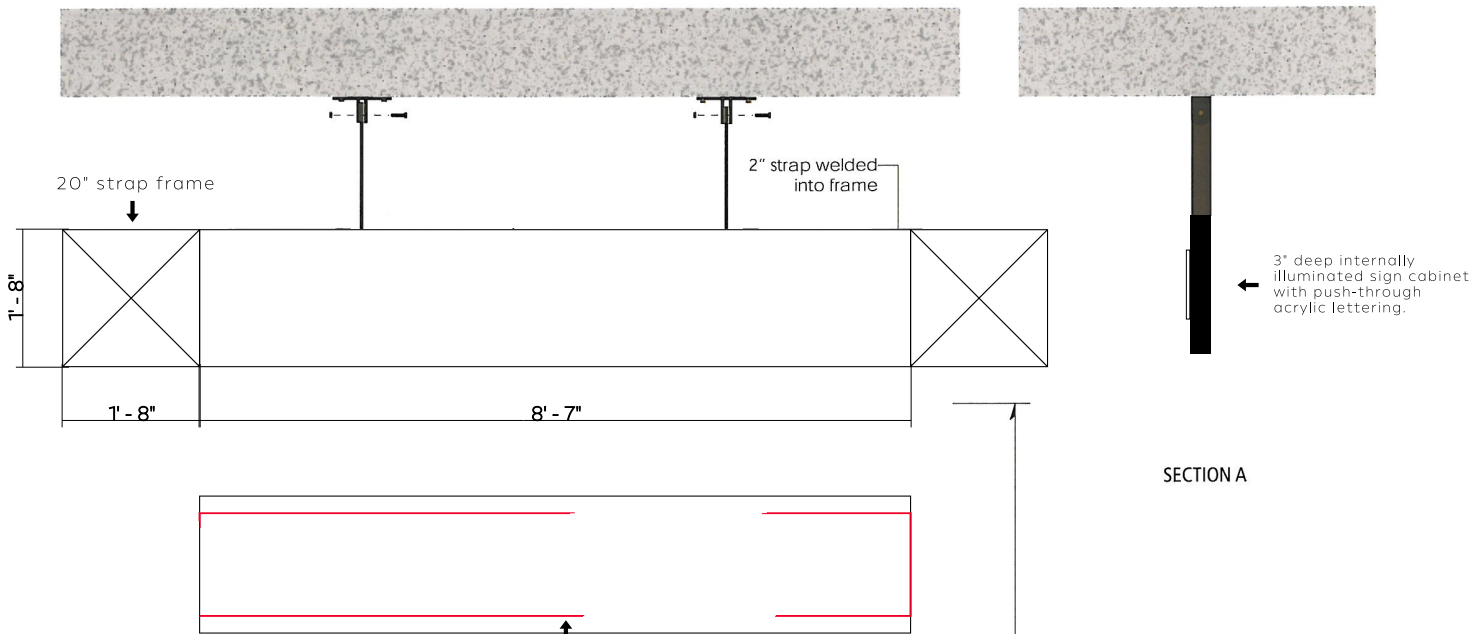
The tenant sign envelopes shown are conceptual representations. The landlord will reserve the right to combine envelopes to accommodate the unforeseen tenant configurations.

* Tenant may increase their signage area 10% - 40% based upon adherence to the design performance standards listed below.

Design Performance Standards (DPS):

- 1- Raised Letter Signs = 10% area increase
- 2- Simplified Letter & Logo (4 items) = 10% area increase
- 3- Sign Structure Materials = 10% area increase
- 4- Sign Structure Integration = 10% area increase





- NOTES**
- 3/16" thick X 2" wide, flat steel frame and cross members.
 - 2" wide, flat steel strap frame welded to center of center opening.
 - Tenant panel to be 3" deep cabinet finished to tenant specs, with up to 1/2" thick attached graphics and up to 1/8" deep routed graphics.
 - Vertical supports to be 3/16" thick x 2" wide, flat steel secured to 2" angle brackets with hardware.
 - Sign to be engineered by others to determine mounting hardware specifics.
 - One sign permitted per business
 - If the area of the sign is over four (4) square feet, it will be counted in the aggregate total sign area allowed for the specific use or occupancy.
 - Sign will be internally illuminated with amber LEDs, halo illuminated lettering with opaque background

SECTION A

Sign graphics may not be larger than 75% of the height of the background panel as indicated by the dashed line.

8'-0" Minimum clearance from walkway to bottom of sign



DFD ConroyerHedrick © 2006 DFD ConroyerHedrick	TYPE HB	SCALE 1"=1" PROJECT Aspen Place NUMBER 06344.000 DATE 12.07.07 REVISED 05.28.08	DRAWING NO. GD 214A
	DESCRIPTION Soffit Mounted Hanging Blade Sign		