

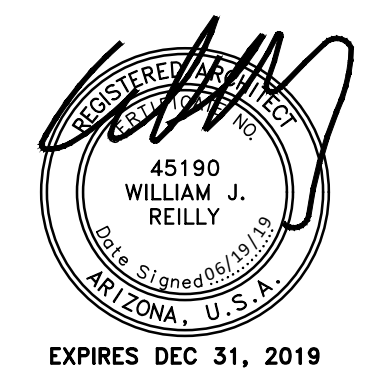


CITY OF FLAGSTAFF
 CORE SERVICES
 3200 WEST ROUTE 66
 FLAGSTAFF, ARIZONA 86001

APMI
 ARCHITECTURE PLANNING INTERIORS

T: 480.966.0709
 WWW.APMI.COM

523 NORTH LEROUX STREET, SUITE 202
 FLAGSTAFF, ARIZONA 86001

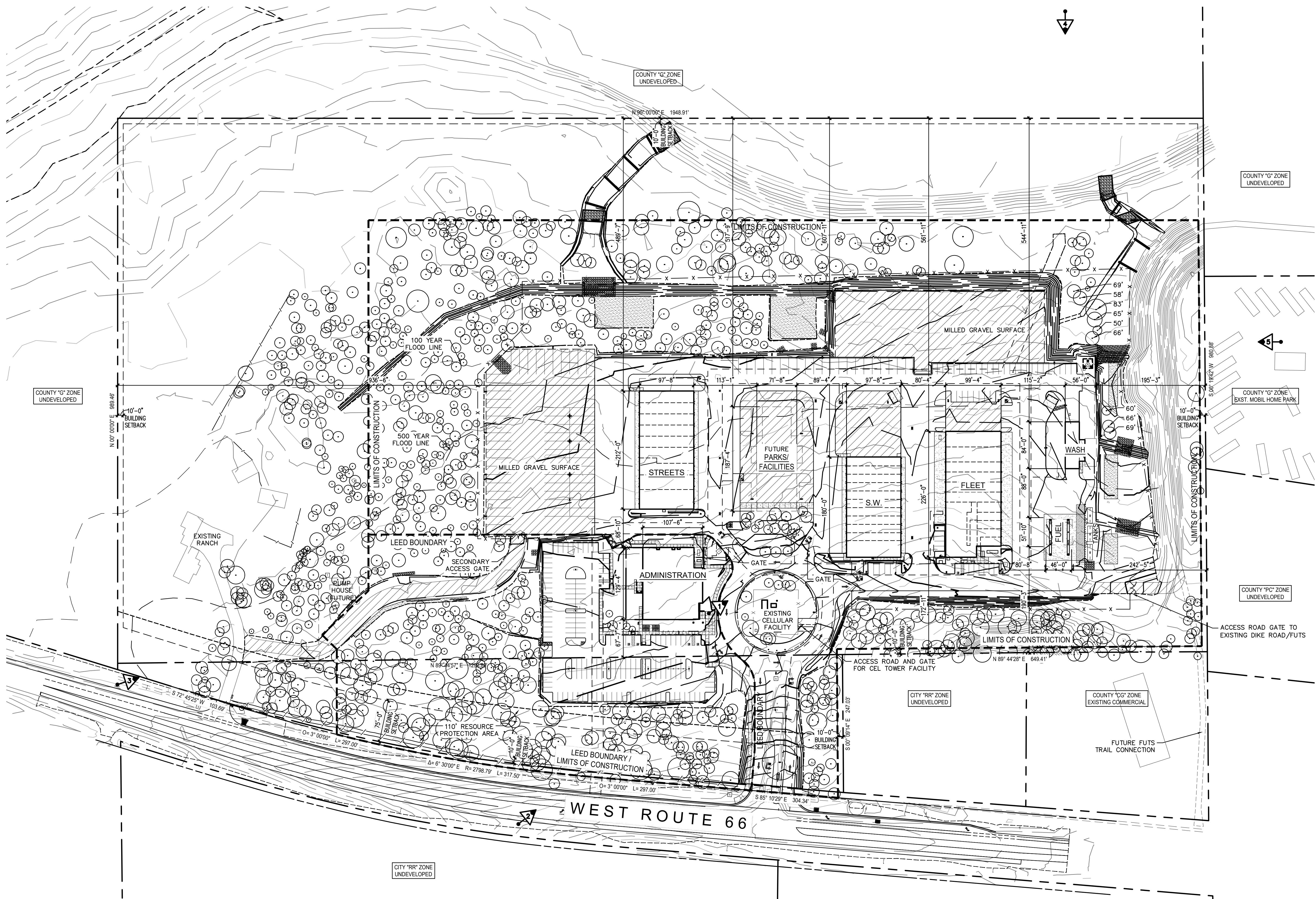


EXPIRES DEC 31, 2019

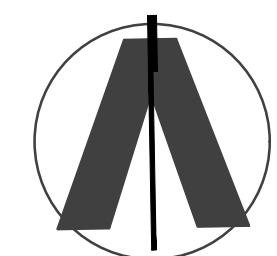
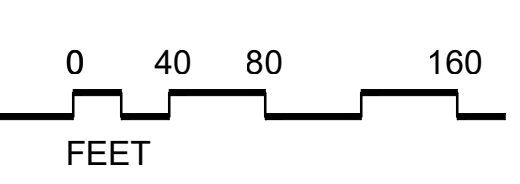
DRAWN JCG
 DATE 19.JUNE.2019
 PROJECT 16108.00

OVERALL
 SITE PLAN

AS1.0



SITE PLAN
 SCALE: 1" = 80'-0"



LEGEND

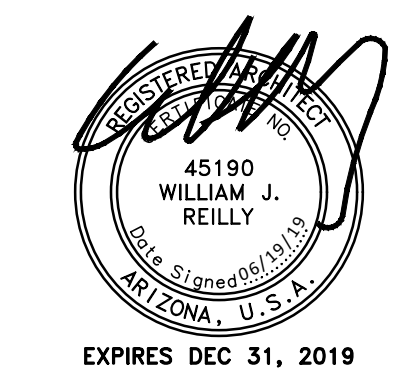
LOCATION OF PHOTO - SEE SHEET AS1.3

THIS DRAWING IS PROVIDED AS AN INSTRUMENT OF SERVICE BY APMI, INC. AND/OR ITS CONSULTANT, AND IS INTENDED FOR USE ON THIS PROJECT ONLY. THE DRAWING REMAINS THE PROPERTY OF APMI, INC. AND SHALL BE RETURNED TO THEM UPON COMPLETION OF THE CONSTRUCTION WORK PURSUANT TO THE ARCHITECTURAL WORKS COPYRIGHT ACT OF 1990. ALL DRAWINGS, SPECIFICATIONS, IDEAS AND DESIGNS, INCLUDING THE OVERALL FORM, ARRANGEMENT AND COMPOSITION OF SPACES AND ELEMENTS APPEARING HEREIN CONSTITUTE THE ORIGINAL COPYRIGHTED WORK OF APMI, INC., AND/OR ITS CONSULTANT. ANY REPRODUCTION, USE, OR DISCLOSURE OF INFORMATION CONTAINED HEREIN WITHOUT PRIOR WRITTEN CONSENT FROM APMI, INC. IS STRICTLY PROHIBITED. ©2017 APMI, INC.



CITY OF FLAGSTAFF
 CORE SERVICES
 3200 WEST ROUTE 66
 FLAGSTAFF, ARIZONA 86001

APMI
 ARCHITECTURE PLANNING INTERIORS
 T: 480.988.0709
 WWW.APMI.COM



EXPIRES DEC 31, 2019

DRAWN JCG
 DATE 19.JUNE.2019
 PROJECT 16108.00

SITE PLAN

AS1.1

PROJECT DATA

OWNER:
 CITY OF FLAGSTAFF
 CORE SERVICES

ARCHITECT:
 APMI, INC.
 323 NORTH LEROUX STREET
 FLAGSTAFF, ARIZONA 86001

WILL REILLY
 T 480.988.0709
 E wreilly@apmi.com

PROJECT LOCATION:
 3200 WEST ROUTE 66
 FLAGSTAFF, ARIZONA 86001

PARCEL NUMBER:
 112-01-001D
 112-01-002

PROJECT DESCRIPTION:
 CONSTRUCTION OF A NEW SERVICE YARD WITH SUPPORT FACILITIES AND ASSOCIATED SITE IMPROVEMENTS

EXISTING ZONING:
 PUBLIC FACILITY (PF)

PROPOSED USE:
 GOVERNMENT OFFICES

AREA CALCULATIONS:
 SITE AREA: 2,096,298 S.F. (48.12 ACRES)

EXISTING IMPERVIOUS AREA: 0 S.F.
 PLANNED IMPERVIOUS AREA: 289,829 S.F.
 MILLED ASPHALT AREA: 121,321 S.F.

BUILDING AREAS:
 ADMINISTRATION: 13,155 S.F.
 FLEET MAINTENANCE: 21,570 S.F.
 SOLID WASTE: 17,580 S.F.
 STREETS: 20,705 S.F.
 WASH: 2,515 S.F.
 TOTAL BUILDING AREA: 86,550 S.F.

FUEL CANOPY: 2,116 S.F.

ALLOWED GROSS FAR: 0.40
 PLANNED GROSS FAR: 0.05

ALLOWED BUILDING HEIGHT: 60'-0"
 PLANNED BUILDING HEIGHTS:
 ADMINISTRATION: (1 FLOOR) 24'-6"
 FLEET MAINTENANCE: (1 FLOOR) 30'-0"
 SOLID WASTE: (1 FLOOR) 21'-3"
 STREETS: (1 FLOOR) 21'-3"
 WASH: (1 FLOOR) 20'-0"
 FUEL CANOPY: (1 FLOOR) 19'-0"

PARKING CALCULATIONS:
 REQUIRED PARKING: (PUBLIC SERVICE 1/EMPLOYEE) 146 SPACES
 REQUIRED H.C. PARKING: (141-200 SPACES) 7 SPACES

PROVIDED PARKING:
 ADMINISTRATION: 144 SPACES
 ADMINISTRATION H.C. PARKING: 6 SPACES
 SERVICE YARD EMPLOYEE SPACES: 18 SPACES
 SERVICE YARD EMPLOYEE H.C. SPACES: 1 SPACE
 SERVICE YARD PARKING: 144 SPACES
 TOTAL PARKING PROVIDED: 313 SPACES

LOW EMISSION PARKING: (5% OF 150) 8 SPACES
 CARPOOL PARKING: (5% OF 150) 8 SPACES

REQUIRED BICYCLE PARKING: (5% OF REQ. VEHICLE) 16 SPACES
 PROVIDED BICYCLE PARKING: 20 SPACES

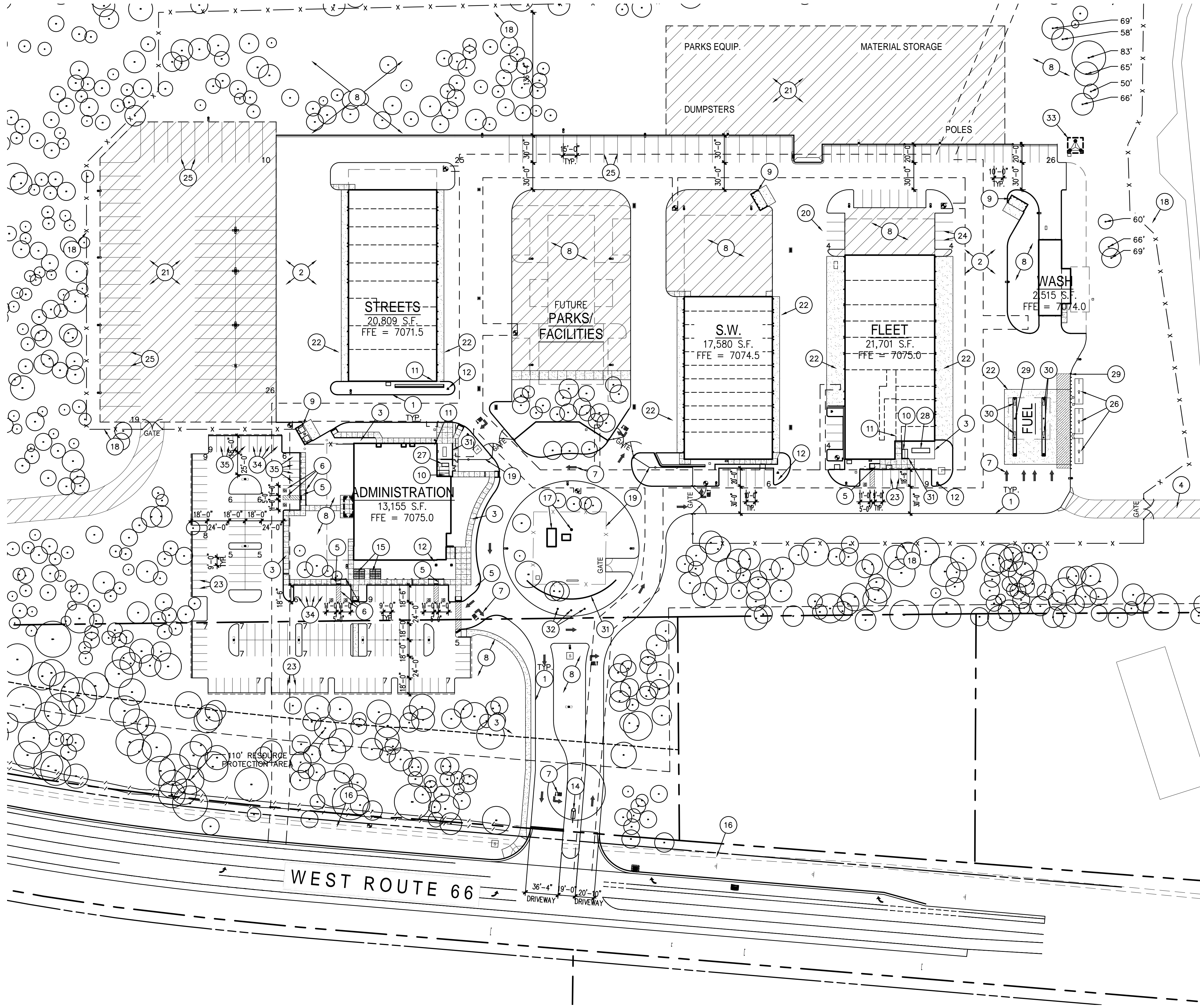
APPLICABLE CODES:
 2012 INTERNATIONAL BUILDING CODE
 2012 INTERNATIONAL MECHANICAL CODE
 2012 INTERNATIONAL PLUMBING CODE
 2011 NATIONAL ELECTRIC CODE
 2009 INTERNATIONAL ENERGY CONSERVATION CODE
 2012 INTERNATIONAL FUEL GAS CODE
 2012 INTERNATIONAL FIRE CODE
 2010 ADA STANDARDS FOR ACCESSIBLE DESIGN

CONSTRUCTION TYPE: TYPE II-B CONSTRUCTION

OCCUPANCY AND AREA LIMITATIONS:
 OCCUPANCY TYPE ALLOWABLE AREA ALLOWABLE BUILDING HEIGHT
 B 23,000 S.F. 3 STORIES
 S-1 17,500 S.F. 2 STORIES
 H-3 14,000 S.F. 2 STORIES

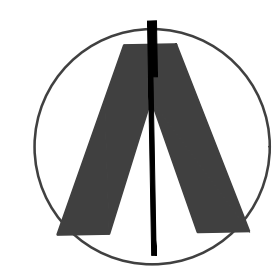
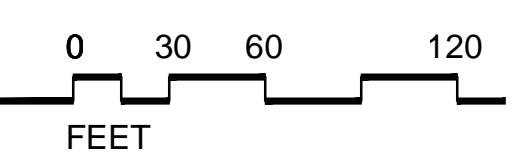
KEYNOTES

1. CAST-IN-PLACE CONCRETE CURB - SEE CIVIL DRAWINGS
2. ASPHALTIC/PCCP PAVING
3. 4" INTEGRALLY COLORED CONCRETE SIDEWALK ON GRADE, TO MATCH CITY OF FLAGSTAFF STANDARDS.
4. FUTS CONNECTION
5. ADA RAMP - 7/AS1.2
6. ADA PARKING AND SIGNAGE PER CITY OF FLAGSTAFF STANDARDS - SEE DETAIL 4/AS1.2
7. PAINTED DIRECTION ARROWS
8. LANDSCAPE AREA - SEE LANDSCAPE DRAWINGS
9. TRASH ENCLOSURE PER CITY OF FLAGSTAFF STANDARD DETAILS - SEE DETAIL 6/AS1.3
10. SES EQUIPMENT LOCATION
11. FIRE RISER LOCATION
12. FIRE DEPARTMENT CONNECTION (FDC) PER CITY OF FLAGSTAFF FIRE REQUIREMENTS.
13. FIRE TRUCK TURNING RADIUS.
14. MONUMENT SIGN - SEE DETAIL 10/AS1.3
15. BIKE RACK - 8/AS1.3
16. FUTURE SIDEWALK BY OTHERS.
17. EXISTING CELLULAR TOWER AND EQUIPMENT SHED.
18. 6' HIGH CHAIN LINK FENCE - SEE DETAIL 7/AS1.4
19. 6' HIGH WROUGHT IRON FENCE - SEE DETAIL 1/AS1.4
20. SAND OIL INTERCEPTOR
21. MILLED ASPHALT GRAVEL SURFACE.
22. CONCRETE APRON
23. STANDARD PARKING 9'X19' TYP.
24. SMALL TRUCK PARKING 10'X20' TYP.
25. OVERSIZED VEHICLE PARKING - SEE CIVIL DRAWINGS
26. ABOVE GROUND FUEL TANKS TO BE RELOCATED FROM EXISTING FACILITY.
27. MECHANICAL EQUIPMENT
28. EMERGENCY GENERATOR
29. EMERGENCY FUEL SHUT OFF SWITCH.
30. FUEL ISLAND
31. 8'-4" HIGH CMU WALL - SEE DETAIL 1/AS1.3
32. FLAGPOLE LOCATIONS. 35'-0" FEDERAL POLE, 25'-0" STATE POLE AND 20'-0" LOCAL POLE - SEE DETAIL 12/AS1.3
33. NEW CITY COMMUNICATIONS TOWER BY OTHERS
34. CARPOOL/VANPOOL SPACE - SEE DETAIL 3/AS1.2
35. LOW EMISSION VEHICLE SPACE - SEE DETAIL 3/AS1.2

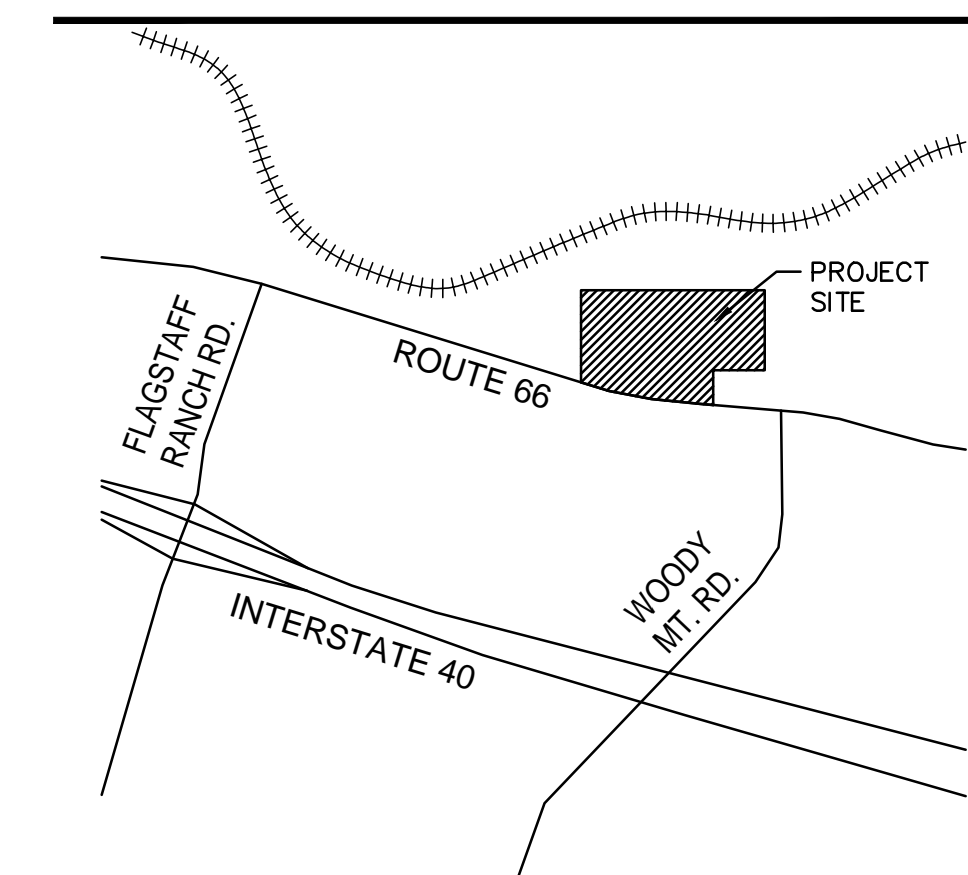


SITE PLAN

SCALE: 1" = 60'-0"



VICINITY MAP N.T.S.



THIS DRAWING IS PROVIDED AS AN INSTRUMENT OF SERVICE BY APMI, INC. AND IS INTENDED FOR USE ON THIS PROJECT ONLY. THE DRAWING REMAINS THE PROPERTY OF APMI, INC. AND SHALL BE RETURNED TO THEM UPON COMPLETION OF THE CONSTRUCTION WORK PURSUANT TO THE ARCHITECTURAL WORKS COPYRIGHT ACT OF 1990. ALL DRAWINGS, SPECIFICATIONS, IDEAS AND DESIGNS, INCLUDING THE OVERALL FORM, ARRANGEMENT AND COMPOSITION OF SPACES AND ELEMENTS APPEARING HEREIN CONSTITUTE THE ORIGINAL COPYRIGHTED WORK OF APMI, INC., AND/OR ITS CONSULTANT. ANY REPRODUCTION, USE, OR DISCLOSURE OF INFORMATION CONTAINED HEREIN WITHOUT PRIOR WRITTEN CONSENT FROM APMI, INC. IS STRICTLY PROHIBITED. ©2017 APMI, INC.

GENERAL NOTES

- A. RENDERINGS REPRESENT APPROXIMATE COLOR OF TOWER
- B. RED SECTIONS IN PHOTO RENDERINGS REPRESENT SECTIONS OF THE TOWER SCREENED BY NATURAL VEGETATION.
- C. EXISTING NATURAL VEGETATION PROVIDES MOST OF THE SCREENING FROM ADJACENT PROPERTIES

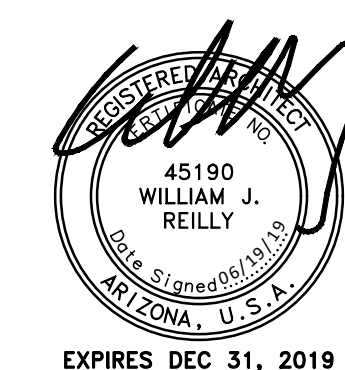


CITY OF FLAGSTAFF
CORE SERVICES
3200 WEST ROUTE 66
FLAGSTAFF, ARIZONA 86001

APM
ARCHITECTURE PLANNING INTERIORS

T: 480.966.0709
WWW.APM.COM

523 NORTH LEROUX STREET, SUITE 202
FLAGSTAFF, ARIZONA 86001



DRAWN JCG
DATE 19.JUNE.2019
PROJECT 16108.00

RENDERINGS

AS1.3



5 PHOTO/RENDERING FROM HIDDEN HOLLOW

SCALE: N.T.S.



3 PHOTO/RENDERING FROM ROUTE 66

SCALE: N.T.S.



1 PHOTO/RENDERING FROM ADMIN. BUILDING

SCALE: N.T.S.



FINISHED TOWER MATERIAL IS GALVANIZED STEEL

5 PHOTO OF FINISH SAMPLE

SCALE: N.T.S.



4 PHOTO/RENDERING FROM McALISTER BASIN

SCALE: N.T.S.



2 PHOTO/RENDERING FROM TIMBER SKY

SCALE: N.T.S.

THIS DRAWING IS PROVIDED AS AN INSTRUMENT OF SERVICE BY APM, INC. AND/OR ITS CONSULTANT, AND IS INTENDED FOR USE ON THIS PROJECT ONLY. THE DRAWING REMAINS THE PROPERTY OF APM, INC. AND SHALL BE RETURNED TO THEM UPON COMPLETION OF THE CONSTRUCTION WORK PURSUANT TO THE ARCHITECTURAL WORKS COPYRIGHT ACT OF 1990. ALL DRAWINGS, SPECIFICATIONS, IDEAS AND DESIGNS, INCLUDING THE OVERALL FORM, ARRANGEMENT AND COMPOSITION OF SPACES AND ELEMENTS APPEARING HEREIN CONSTITUTE THE ORIGINAL COPYRIGHTED WORK OF APM, INC., AND/OR ITS CONSULTANT. ANY REPRODUCTION, USE, OR DISCLOSURE OF INFORMATION CONTAINED HEREIN WITHOUT PRIOR WRITTEN CONSENT FROM APM, INC. IS STRICTLY PROHIBITED. ©2017 APM, INC.

Product Specifications

COMMSCOPE®



DB224-B
1-port omni exposed dipole antenna, 155–165 MHz, 360° HPBW, fixed electrical tilt

- Broad response
- Two-piece mast for ease of shipping

Electrical Specifications

Frequency Band, MHz	155–165
Gain, dBi	8.1
Beamwidth, Horizontal, degrees	360
Beamwidth, Vertical, degrees	16.0
Beam Tilt, degrees	0
VSWR Return Loss, dB	1.5 14.0
Input Power per Port, maximum, watts	500
Polarization	Vertical
Impedance	50 ohm

General Specifications

Operating Frequency Band	155 – 165 MHz
Antenna Type	Omni
Band	Single band
Performance Note	Outdoor usage

Mechanical Specifications

RF Connector Quantity, total	1
RF Connector Quantity, low band	1
RF Connector Interface	N Male
Color	Silver
Grounding Type	RF connector inner conductor and body grounded to reflector and mounting bracket
Radiator Material	Aluminum
RF Connector Location	Bottom
Wind Loading, maximum	560.5 N @ 100 mph 126.0 lbf @ 100 mph
Wind Speed, maximum	130 km/h 81 mph

Dimensions

Length	6477.0 mm 255.0 in
Net Weight, without mounting kit	15.9 kg 35.1 lb

Regulatory Compliance/Certifications

Agency	Classification
RohS 2011/65/EU	Compliant by Exemption

©2017 CommScope, Inc. All rights reserved. All trademarks identified by ® or ™ are registered trademarks, respectively, of CommScope. page 1 of 2
All specifications are subject to change without notice. See www.commscope.com for the most current information. Revised: May 25, 2017 October 27, 2017

ANTENNA #3

SCALE: N.T.S.

Product Specifications

COMMSCOPE®



VHLPX3-23/A
1.0 m | 3 ft ValuLine® High Performance Low Profile Antenna, dual-polarized, 21.200–23.600 GHz

Product Classification

Brand	ValuLine®
Product Type	Microwave antenna

General Specifications

Antenna Type	VHLPX - ValuLine® High Performance Low Profile Antenna, dual-polarized
Diameter, nominal	1.0 m 3 ft
Polarization	Dual

Electrical Specifications

Beamwidth, Horizontal	1.0 °
Beamwidth, Vertical	1.0 °
Cross Polarization Discrimination (XPD)	30 dB
Electrical Compliance	Brazil Anatel Class 2 Canada SRSP 321.8 Part A ETSI 302 217 Class 3 US FCC Part 101A
Front-to-Back Ratio	71 dB
Gain, Low Band	44.5 dBi
Gain, Mid Band	44.8 dBi
Gain, Top Band	45.0 dBi
Operating Frequency Band	21.200 – 23.600 GHz
Radiation Pattern Envelope Reference (RPE)	7172A
Return Loss	17.7 dB
VSWR	1.30

Mechanical Specifications

Fine Azimuth Adjustment	±15°
Fine Elevation Adjustment	±15°
Mounting Pipe Diameter	90 mm–120 mm 3.5 in–4.7 in
Net Weight	17 kg 37 lb
Side Struts, Included	0
Side Struts, Optional	1 inboard
Wind Velocity Operational	180 km/h 112 mph
Wind Velocity Survival Rating	250 km/h 155 mph

Wind Forces At Wind Velocity Survival Rating

©2017 CommScope, Inc. All rights reserved. All trademarks identified by ® or ™ are registered trademarks, respectively, of CommScope. page 1 of 5
All specifications are subject to change without notice. See www.commscope.com for the most current information. Revised: October 25, 2017 October 27, 2017

ANTENNA #4

SCALE: N.T.S.

Product Specifications

COMMSCOPE®



HP6-107-D2A/H
1.8 m | 6 ft High Performance Parabolic Shielded Antenna, single-polarized, 10.700–11.700 GHz, PDR100, gray antenna, standard white radome without flash, standard pack—one-piece reflector

Product Classification

Product Type	Microwave antenna
--------------	-------------------

General Specifications

Antenna Type	HP - High Performance Parabolic Shielded Antenna, single-polarized
Diameter, nominal	1.8 m 6 ft
Packing	Standard pack
Radome Color	White
Radome Material	Standard
Reflector Construction	One-piece reflector
Antenna Input	PDR100
Antenna Color	Gray
Antenna Type	HP - High Performance Parabolic Shielded Antenna, single-polarized
Diameter, nominal	1.8 m 6 ft
Flash Included	No
Polarization	Single

Electrical Specifications

Operating Frequency Band	10.700 – 11.700 GHz
Beamwidth, Horizontal	1.0 °
Beamwidth, Vertical	1.0 °
Cross Polarization Discrimination (XPD)	30 dB
Electrical Compliance	ETSI Class 3 US FCC Part 101A
Front-to-Back Ratio	70 dB
Gain, Low Band	43.6 dBi
Gain, Mid Band	44.0 dBi
Gain, Top Band	44.4 dBi
Operating Frequency Band	10.700 – 11.700 GHz
Radiation Pattern Envelope Reference (RPE)	3222H
Return Loss	30.7 dB
VSWR	1.06

Mechanical Specifications

Fine Azimuth Adjustment	±15°
Fine Elevation Adjustment	±20°

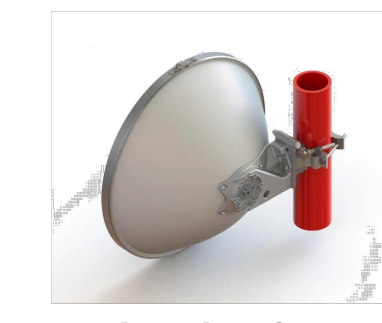
©2017 CommScope, Inc. All rights reserved. All trademarks identified by ® or ™ are registered trademarks, respectively, of CommScope. page 1 of 5
All specifications are subject to change without notice. See www.commscope.com for the most current information. Revised: May 19, 2017 October 27, 2017

ANTENNA #1

SCALE: N.T.S.

Product Specifications

COMMSCOPE®



VHLPX2-26/C
0.6 m | 2 ft ValuLine® High Performance Low Profile Antenna, dual-polarized, 24.250–26.500 GHz

Product Classification

Brand	ValuLine®
Product Type	Microwave antenna

General Specifications

Antenna Type	VHLPX - ValuLine® High Performance Low Profile Antenna, dual-polarized
Diameter, nominal	0.6 m 2 ft
Polarization	Dual

Electrical Specifications

Beamwidth, Horizontal	1.5 °
Beamwidth, Vertical	1.5 °
Cross Polarization Discrimination (XPD)	30 dB
Electrical Compliance	Brazil Anatel Class 2 ETSI 302 217 Class 3 US FCC Part 101A
Front-to-Back Ratio	68 dB
Gain, Low Band	41.5 dBi
Gain, Mid Band	42.0 dBi
Gain, Top Band	42.5 dBi
Operating Frequency Band	24.250 – 26.500 GHz
Radiation Pattern Envelope Reference (RPE)	7218C
Return Loss	17.7 dB
VSWR	1.30

Mechanical Specifications

Fine Azimuth Adjustment	±15°
Fine Elevation Adjustment	±15°
Mounting Pipe Diameter	50 mm–120 mm 2.0 in–4.7 in
Net Weight	8 kg 17 lb
Side Struts, Included	0
Side Struts, Optional	0
Wind Velocity Operational	180 km/h 112 mph
Wind Velocity Survival Rating	250 km/h 155 mph

Wind Forces At Wind Velocity Survival Rating

Axial Force (FA)	1290 N 290 lbf
Side Force (FS)	639 N 144 lbf

©2017 CommScope, Inc. All rights reserved. All trademarks identified by ® or ™ are registered trademarks, respectively, of CommScope. page 1 of 5
All specifications are subject to change without notice. See www.commscope.com for the most current information. Revised: October 25, 2017 October 27, 2017

ANTENNA #2

SCALE: N.T.S.



CITY OF FLAGSTAFF
CORE SERVICES

3200 WEST ROUTE 66
FLAGSTAFF, ARIZONA 86001

APMI
ARCHITECTURE PLANNING INTERIORS

T: 480.960.0709
WWW.APMI.COM

523 NORTH LEROUX STREET, SUITE 202
FLAGSTAFF, ARIZONA 86001



EXPIRES DEC 31, 2019

DRAWN JCG
DATE 19.JUNE.2019
PROJECT 16108.00

TOWER
EQUIPMENT

AS1.4

THIS DRAWING IS PROVIDED AS AN INSTRUMENT OF SERVICE BY APMI, INC. AND/OR ITS CONSULTANT, AND IS INTENDED FOR USE ON THIS PROJECT ONLY. THE DRAWING REMAINS THE PROPERTY OF APMI, INC. AND SHALL BE RETURNED TO THEM UPON COMPLETION OF THE CONSTRUCTION WORK PURSUANT TO THE ARCHITECTURAL WORKS COPYRIGHT ACT OF 1990. ALL DRAWINGS, SPECIFICATIONS, IDEAS AND DESIGNS, INCLUDING THE OVERALL FORM, ARRANGEMENT AND COMPOSITION OF SPACES AND ELEMENTS APPEARING HEREIN CONSTITUTE THE ORIGINAL COPYRIGHTED WORK OF APMI, INC., AND/OR ITS CONSULTANT, AND ANY REPRODUCTION, USE, OR DISCLOSURE OF INFORMATION CONTAINED HEREIN WITHOUT PRIOR WRITTEN CONSENT FROM APMI, INC. IS STRICTLY PROHIBITED. ©2017 APMI, INC.