

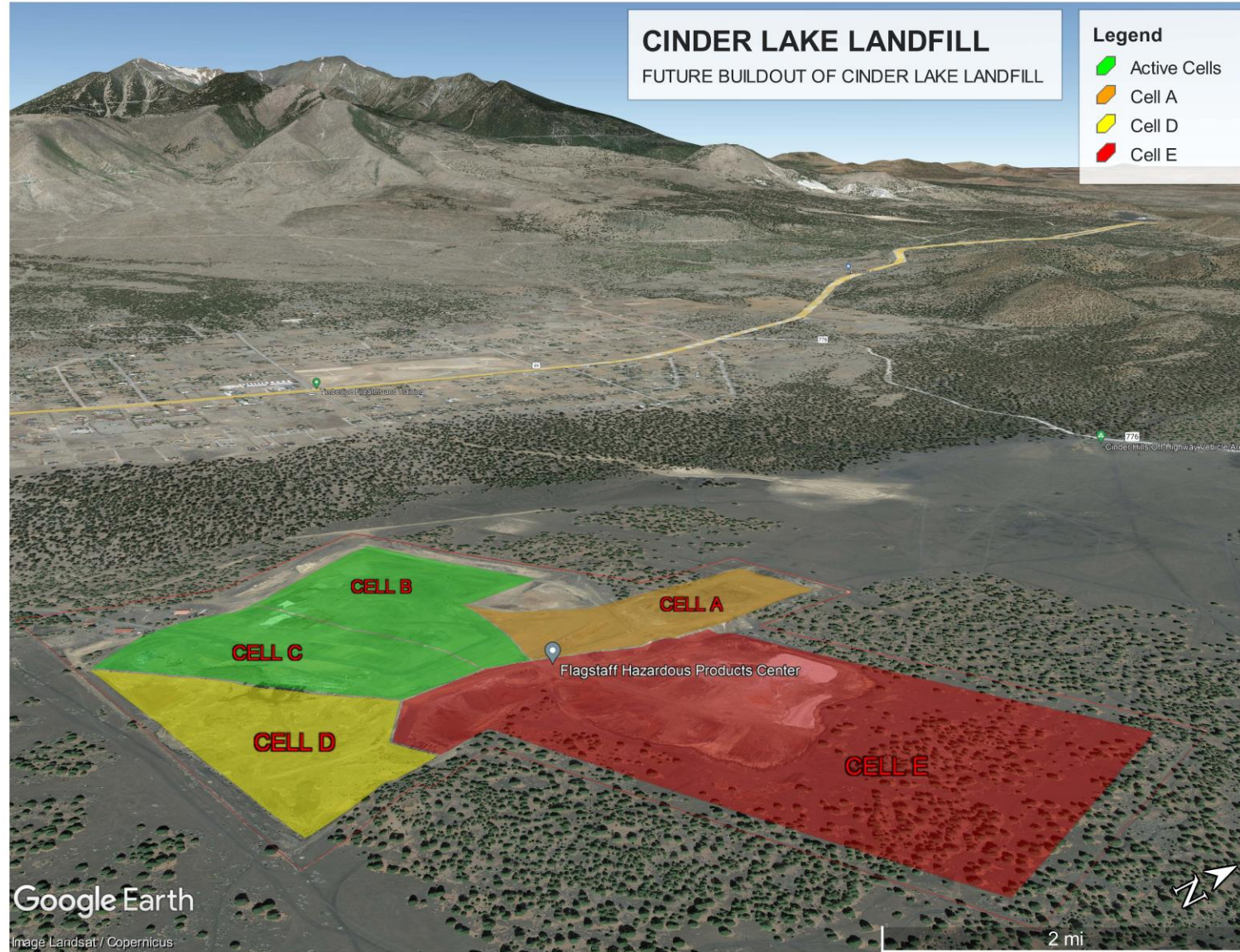
Sequence D Phase-II Excavation & Design

CINDER LAKE LANDFILL





SEQUENCE D-PHASE II





SEQUENCE D-PHASE II

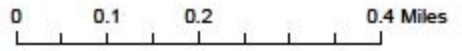


CINDER LAKE LANDFILL-SITE PLAN CELL/SEQUENCE D EXCAVATION



— PROPERTY BOUNDARY

- CELL NAME
- CELL A
 - CELL B
 - CELL C
 - CELL D
 - CELL E



100,000 cubic yards per year of soil excavation required

- Needs to be ready in 3 years

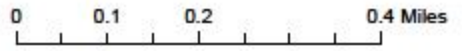
CINDER LAKE LANDFILL-SITE PLAN
CELL/SEQUENCE D EXCAVATION



PROPERTY BOUNDARY

CELL NAME

- CELL A
- CELL B
- CELL C
- CELL D
- CELL E



leachate collection system
(liner and piping)

CINDER LAKE LANDFILL-SITE PLAN
CELL/SEQUENCE D EXCAVATION



- CQA
- Construction Specifications



SEQUENCE D-PHASE II



Experience

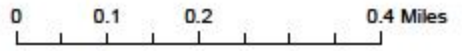
- 36 years in landfill design
- Local Projects
 - Phoenix
 - Glendale
- Previous experience at Cinder Lake Landfill
 - 2018 Gas sampling & reporting

CINDER LAKE LANDFILL-SITE PLAN
CELL/SEQUENCE D EXCAVATION



— PROPERTY BOUNDARY

- CELL NAME
- CELL A
 - CELL B
 - CELL C
 - CELL D
 - CELL E



review by regulatory agencies,
and construction)

Questions?

