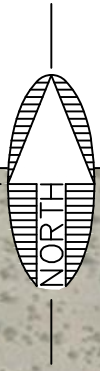
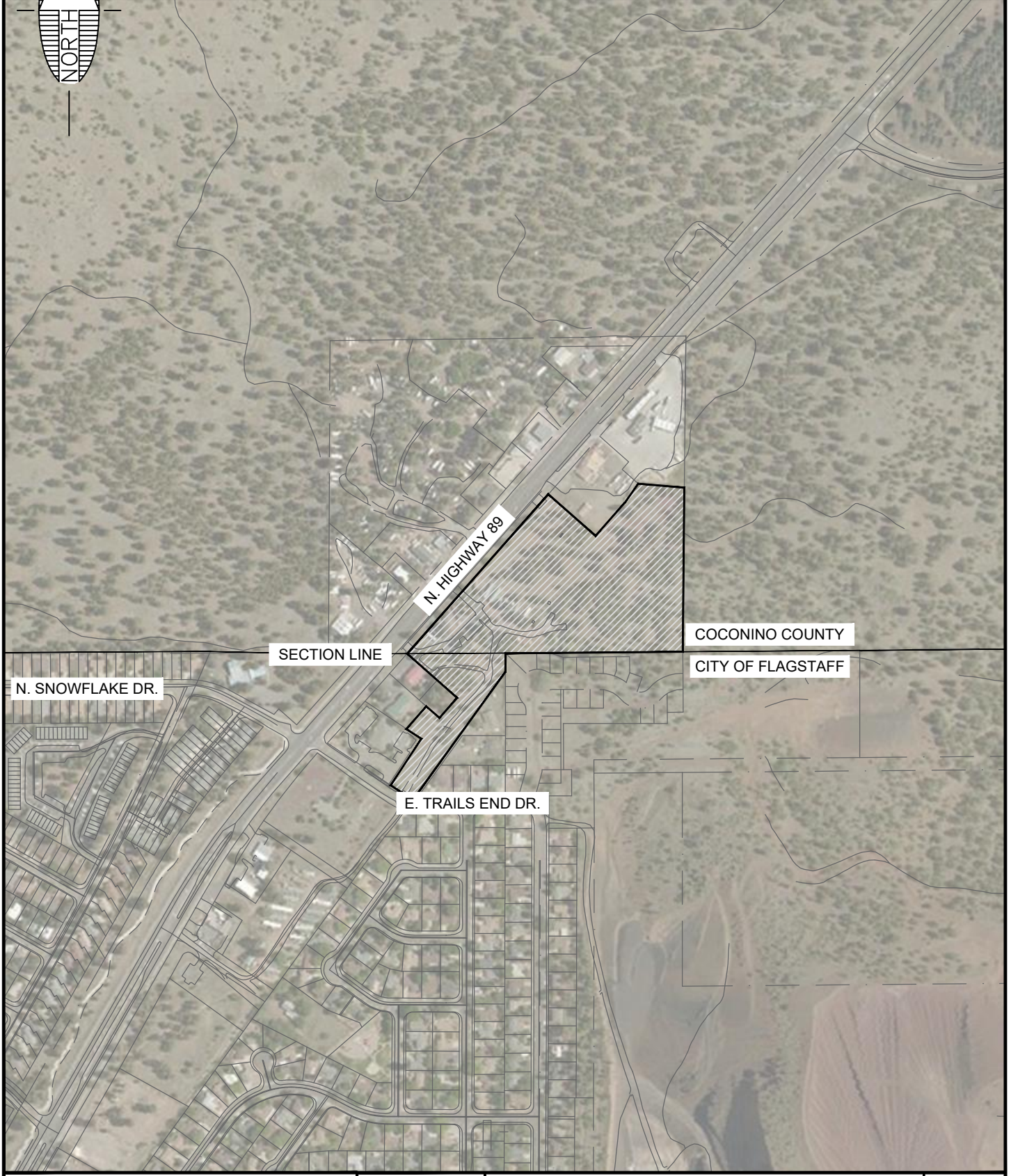


PLOTTED: Jun 07, 2021--11:05am



LOCATED IN NW QUARTER OF SECTION 5 AND THE SOUTH HALF OF SECTION 32, TOWNSHIP 21 NORTH AND 22 NORTH, RANGE 8 EAST, GILA AND SALT RIVER MERIDIAN, COCONINO COUNTY, FLAGSTAFF, ARIZONA



FILE: P:\2020\20136\DRAWINGS\CONCEPT REZONE\20136 - VICINITY MAP.DWG CPHAM



Shephard Wesnitzer, Inc.

110 W. Dale Avenue
 Flagstaff, AZ 86001
 928.773.0354
 928.774.8934 fax
 www.swiaz.com

JOB NO.	20136
DATE	JUN 21
SCALE	1"=500'
DRAWN	CNP
DESIGN	CNP
CHECKED	SCI

FLAGSTAFF REHAB CAMPUS	FLAGSTAFF ARIZONA
VICINITY MAP	

SHEET	1
OF	1