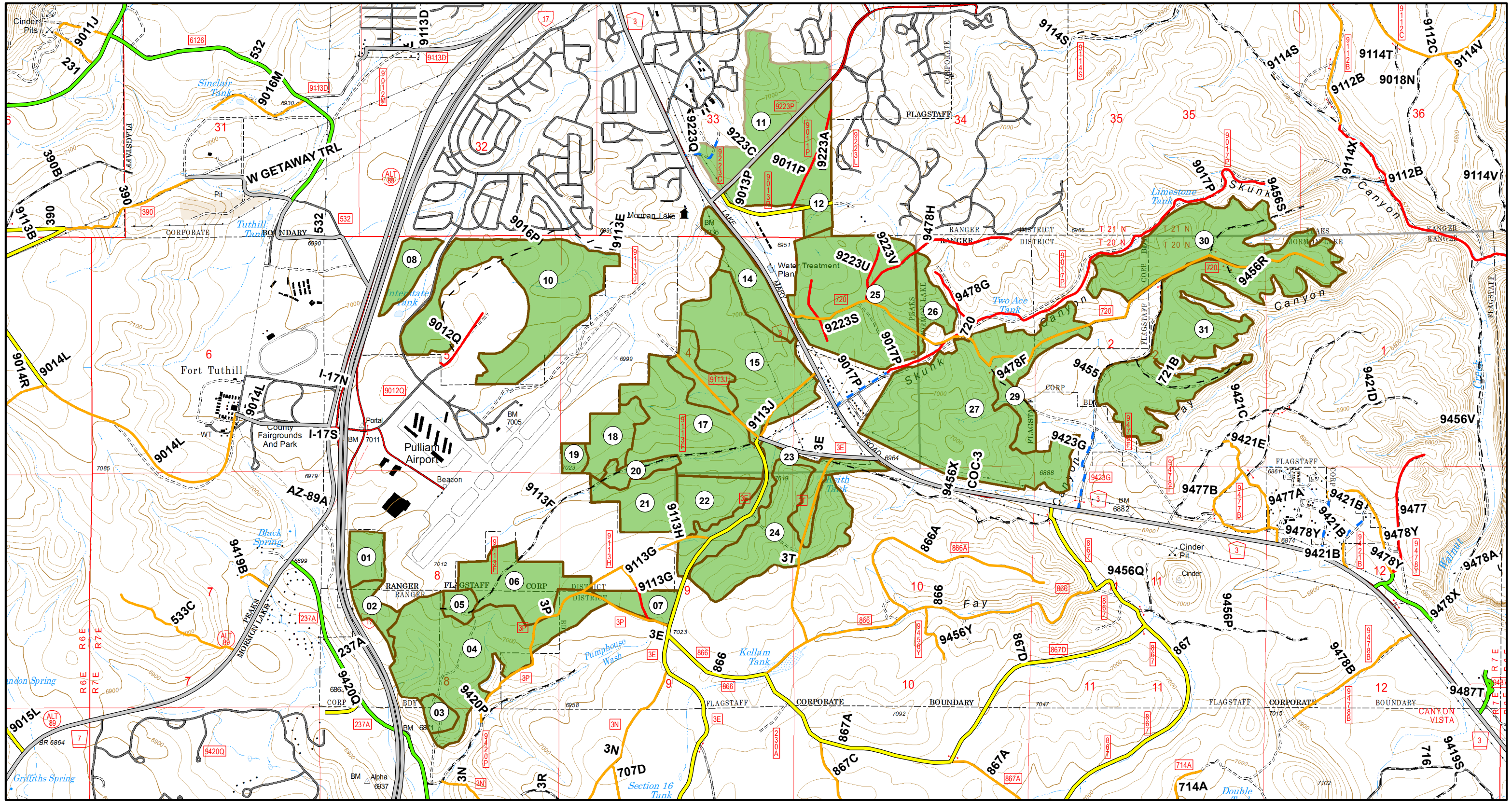




Southside- Airport Timber Sale

Coconino National Forest - Flagstaff Ranger District



Disclaimer
 The USDA Forest Service uses the most current and complete data available. GIS data and product accuracy may vary. Using GIS products for purposes other than those for which they were intended may yield inaccurate or misleading results. The USDA Forest Service reserves the right to correct, update, modify, or replace GIS products without notification. This map is not a legal land line or ownership document. Public lands are subject to change and leasing, and may have access restrictions; check with local offices. Obtain permission before entering private land.

Map Author: alundquist 1/20/2021

Legend		Road Status	
	Southside Units		Private, limited, or restricted access road
			MVUM-open, all vehicles, seasonal
			MVUM-open, vehicles < 62 inches wide, seasonal
			MVUM-open, public roads or highways
			Closed unless re-opened with NEPA
			Limited FS admin use only
			MVUM-open, hwy-legal vehicles, seasonal
			Decommissioned or converted
			MVUM-open, hwy-legal vehicles, yearlong

ARIZONA
Coconino County