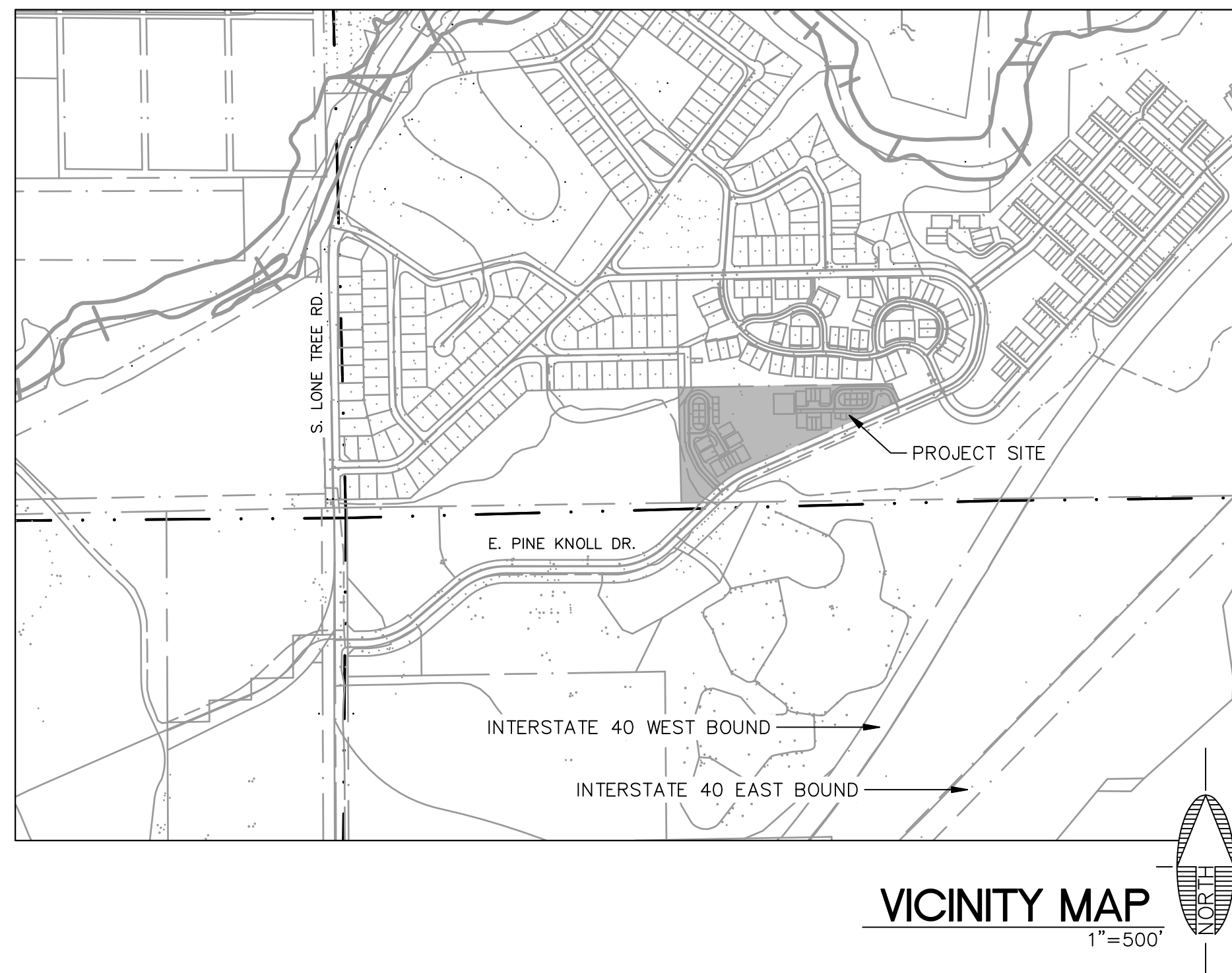


PRELIMINARY PLAT FOR RIO HOMES UNIT 4 MULTI-FAMILY FLAGSTAFF, ARIZONA

AN AMENDED PLAT FOR RIO HOMES UNIT 4, ACCORDING TO THE FINAL PLAT FOR RIO HOMES UNIT 4, INSTRUMENT #3925263, OFFICIAL RECORDS COCONINO COUNTY, ARIZONA.

LOCATED IN SOUTH HALF OF SECTION 22, TOWNSHIP 21 NORTH, RANGE 7 EAST, GILA AND SALT BASE AND MERIDIAN, COCONINO COUNTY, FLAGSTAFF, ARIZONA



VICINITY MAP
1"=500'

SOURCE OF PROJECT INFORMATION

TOPOGRAPHIC, BOUNDARY, EASEMENTS, AND EXISTING IMPROVEMENTS WERE PROVIDED BY THE CITY OF FLAGSTAFF AND ARE FROM A RECORD OF SURVEY, RECORDED IN BOOK 18, PAGES 3 AND 3A, PREPARED BY WFM, INC. ENGINEERS AND SURVEYORS AND SEALED BY JAMES A. FOLKERS ON 9-7-2001. A SUPPLEMENTAL TOPOGRAPHIC SURVEY WAS PERFORMED BY SHEPHARD-WESNITZER, INC., DATED 8-13-2019.

ADEQUATE WATER SUPPLY NOTE:

THE CITY OF FLAGSTAFF PROVIDES WATER [UTILITY] SERVICE PURSUANT TO STATE LAW, AND IS CURRENTLY OPERATING UNDER A DESIGNATION OF ADEQUATE WATER SUPPLY GRANTED BY THE ARIZONA DEPARTMENT OF WATER RESOURCES, APPLICATION NO. 41-900002.0002.

COORDINATE SYSTEM DETAILS

LINEAR UNIT: INTERNATIONAL FEET
 GEODETIC DATUM: NAD 83 (CONUS)
 VERTICAL DATUM: NAVD 88, REFERENCED FROM NGS CORS STATION 'AZFL'
 SYSTEM: CITY OF FLAGSTAFF LOW DISTORTION PROJECTION (1992)

PROJECTION:
 TRANSVERSE MERCATOR
 LATITUDE OF GRID ORIGIN: 31.000000000 N
 LONGITUDE OF CENTRAL MERIDIAN: 111.916666667 W
 NORTHING AT GRID ORIGIN: -48563.550 FT
 EASTING AT CENTRAL MERIDIAN: -1475125.575 FT
 CENTRAL MERIDIAN SCALE FACTOR: 1.0003162016

ALL MEASURED DISTANCES AND BEARINGS SHOWN HEREON ARE GRID VALUES BASED ON THE PRECEDING PROJECTION DEFINITION. THE PROJECTION WAS DEFINED SUCH THAT GRID DISTANCES ARE EQUIVALENT TO "GROUND" DISTANCES IN THE PROJECT AREA.

THE BASIS OF BEARINGS IS TRUE GEODETIC NORTH; NOTE THAT THE MEASURED GRID BEARINGS SHOWN HEREON (OR IMPLIED BY GRID COORDINATES) DO NOT EQUAL GEODETIC BEARINGS DUE TO MERIDIAN CONVERGENCE.

ORTHOMETRIC HEIGHTS (ELEVATIONS) WERE TRANSFERRED TO THE SITE FROM NGS CONTROL POINT "AZFL" USING GPS WITH NGS GEOID MODEL "GEOID03". ELEVATIONS SHOWN HEREON ARE REFERENCED TO THE PUBLISHED ELEVATION OF THIS STATION.

THE SURVEY WAS CONDUCTED USING GPS REFERENCED TO THE NATIONAL SPATIAL REFERENCE SYSTEM. A PARTIAL LIST OF POINT COORDINATES FOR THIS SURVEY IS GIVEN BELOW (ADDITIONAL COORDINATES ARE AVAILABLE UPON REQUEST). LOCAL NETWORK ESTIMATES ARE GIVEN AT THE 95% CONFIDENCE LEVEL AND ARE BASED ON A LEAST-SQUARES ADJUSTMENT OF STATISTICALLY INDEPENDENT OBSERVATIONS.

POINT #3003 = 2" ALUMINUM CAP IN CENTERLINE OF PINE KNOLL DRIVE
 LATITUDE = N 35.181316209
 LONGITUDE = W 111.643120982
 ELLIPSOID HEIGHT = 6864.461 FT
 NORTHING = 46905.651 FT
 EASTING = 33208.715 FT
 ELEVATION = 6940.464 FT

POINT #3004 = 2" ALUMINUM CAP IN CENTERLINE OF PINE KNOLL DRIVE
 LATITUDE = N 35.181528385
 LONGITUDE = W 111.642723891
 ELLIPSOID HEIGHT = 6865.395 FT
 NORTHING = 46983.232 FT
 EASTING = 33327.207 FT
 ELEVATION = 6941.398 FT

POINT #3005 = 2" ALUMINUM CAP IN CENTERLINE OF PINE KNOLL DRIVE
 LATITUDE = N 35.182232027
 LONGITUDE = W 111.640773788
 ELLIPSOID HEIGHT = 6891.863 FT
 NORTHING = 47241.044 FT
 EASTING = 33909.449 FT
 ELEVATION = 6967.871 FT

PROJECT OWNER/DEVELOPER:

RP40, LLC & RP4V, LLC
 THOMAS BREWSTER, MANAGER
 2410 E. ROUTE 66
 FLAGSTAFF, AZ 86004
 (928) 774-6637

CIVIL ENGINEER:

SHEPHARD WESNITZER INC.
 GUILLERMO E. CORTES, PE
 110 WEST DALE AVE
 FLAGSTAFF, AZ 86001
 (928) 773-0354

SURVEYOR:

SHEPHARD-WESNITZER, INC.
 AARON BORLING, RLS #48756
 110 WEST DALE AVE
 FLAGSTAFF, AZ 86001
 (928) 773-0354

LEGEND

---	ROW BOUNDARY	⊙	FOUND MONUMENTS
- - -	EX. EASEMENT	⊙	SECTION CORNER AS NOTED
---	ROAD CENTERLINE	•	CALCULATED POINT
---	LOT LINE		
- - -	EASEMENT		
---	SECTION LINE		

Sheet List Table		
Sheet Number	Sheet Number	Sheet Title
1	CVR	COVER
2	EPO1	EXISTING BOUNDARIES & EASEMENTS
3	PP01	PRELIMINARY PLAT

LEGAL DESCRIPTION

RIO HOMES UNIT 4, ACCORDING TO THE CITY OF FLAGSTAFF FINAL PLAT FOR RIO HOMES UNIT 4, INSTRUMENT #3925263, OFFICIAL RECORDS OF COCONINO COUNTY, LOCATED IN THE SOUTH HALF OF SECTION 22, TOWNSHIP 21 NORTH, RANGE 7 EAST OF THE GILA AND SALT RIVER MERIDIAN, COCONINO COUNTY, ARIZONA.

PROJECT INFORMATION

RIO HOMES UNIT 4
 EMMA DRIVE & JEN DRIVE
 FLAGSTAFF, AZ 86001

NUMBER OF LOTS/TRACTS: 9
 BUILDING TYPE: MEDIUM DENSITY RESIDENTIAL (MR)
 GROSS/NET AREA: 5.1 ACRES

EXISTING ZONING: MR (MEDIUM DENSITY RESIDENTIAL)

- TRACT 'A' FOR THE PURPOSES OF ACCESS EASEMENT, INGRESS/EGRESS, PARKING, COMMON ELEMENT AND OPEN SPACE AS SHOWN HEREON.
- TRACT 'B' FOR THE PURPOSES OF OPEN SPACE, RESOURCE PROTECTION, DRAINAGE MAINTENANCE EASEMENT AND FUTURE DEVELOPMENT AS SHOWN HEREON.
- TRACT 'C' FOR THE PURPOSE OF INGRESS/EGRESS, PARKING, COMMON ELEMENT AND OPEN SPACE AS SHOWN HEREON.

SUMMARY OF TRACTS

- TRACT A: 31,057 SF, 0.71 ACRES
- TRACT B: 149,890 SF, 3.44 ACRES
- TRACT C: 29,160 SF, 0.67 ACRES

UTILITY COMPANY CONTACTS

APS
 CONTACT: CHAD BROOKS
 2200 E. HUNTINGTON
 FLAGSTAFF, AZ 86004
 CHAD.BROOKS@APS.COM
 PHONE: (928) 773-6440

UNISOURCE ENERGY SERVICES
 CONTACT: MARTIN CONBOY
 2901 W SHAMRELL BLVD #110
 FLAGSTAFF, AZ 86001
 MCONBOY@UESAZ.COM
 PHONE: (928) 226-2269

CENTURYLINK
 CONTACT: MANUEL HERNANDEZ
 112 NORTH BEAVER STREET
 FLAGSTAFF, AZ 86001
 MANUEL.HERNANDEZ4@CENTURYLINK.COM
 PHONE: (928) 779-4935

ALTICE USA
 CONTACT: SANFORD YAZZIE
 1601 SOUTH PLAZA WAY
 FLAGSTAFF, AZ 86001
 SANFORD.YAZZIE@ALTICEUSA.COM
 PHONE: (928) 266-0672

UTILITY COMPANY APPROVAL

ARIZONA PUBLIC SERVICE

CHAD BROOKS (BY LETTER) 10-4-2021
 BY: CHAD BROOKS DATE:

UNISOURCE ENERGY SERVICES

MARTIN CONBOY (BY LETTER) 10-4-2021
 BY: MARTIN CONBOY DATE:

CENTURYLINK

MANUEL HERNANDEZ (BY LETTER) 10-18-2021
 BY: MANUEL HERNANDEZ DATE:

ALTICE USA

SANFORD YAZZIE (BY LETTER) 10-18-2021
 BY: SANFORD YAZZIE DATE:

UTILITY CONFLICT NOTE

THERE ARE NO APPARENT UTILITY CONFLICTS WITH APS, CENTURYLINK, UNISOURCE, OR ALTICE USA; HOWEVER, THEY DO HAVE EXISTING FACILITIES IN THE AREA THAT WILL NEED TO BE PROTECTED AND/OR RELOCATED.

FLOOD ZONE CLASSIFICATION:

THE SUBJECT PARCEL IS LOCATED WITHIN ZONE X OF FEMA FIRM MAP #0400506816G, EFFECTIVE SEPTEMBER 3, 2010. ZONE X IS DESCRIBED AS AREAS DETERMINED TO BE OUTSIDE THE 0.2% ANNUAL CHANCE FLOODPLAIN.

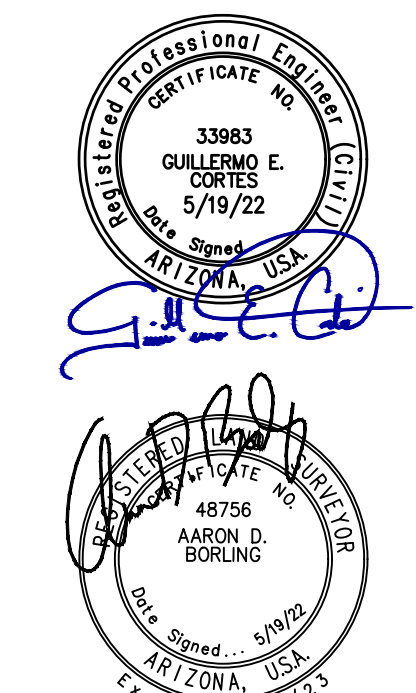
RESOURCE PROTECTION :

THE PROJECT FALLS WITHIN THE CITY OF FLAGSTAFF RESOURCE PROTECTION OVERLAY ZONE. BASED ON THE APPROVED RIO HOMES NATURAL RESOURCE PROTECTION PLAN FOR UNIT 4, DATED FEBRUARY 18, 2021, AND THE PROPOSED DEVELOPMENT, THERE ARE RESOURCES THAT REQUIRE PRESERVATION.

CERTIFICATE OF LAND SURVEYOR

THIS IS TO CERTIFY THAT THE SURVEY OF THE PROPERTY DESCRIBED AND PLATTED HEREON WAS MADE UNDER MY DIRECTION AND SUPERVISION AND IS ACCURATELY REPRESENTED ON THIS PLAT. I ALSO CERTIFY THAT THE PLAT IS IN SUBSTANTIAL CONFORMANCE TO THE APPROVED TENTATIVE PLAT AND THAT THIS PLAT IS CORRECT AND ACCURATE AS SHOWN TO THE BEST OF MY KNOWLEDGE AND BELIEF.

Aaron D. Borling, RLS 48756



C.O.F. #PZ-19-00019-07

FLAGSTAFF ARIZONA

RIO HOMES UNIT 4 PRELIMINARY PLAT

COVER SHEET

JOB NO: 19025
 DATE: MAY 22
 SCALE: AS SHOWN
 DRAWN: JEE
 DESIGN: KMF/AEE
 CHECKED: AUB/GEC

110 W. Dale Avenue
 Flagstaff, AZ 86001
 928.773.0354
 928.774.8934 fax
 www.swi.az.com

SWI
 Shephard Wesnitzer, Inc.

NO.	DESCRIPTION	DATE	BY

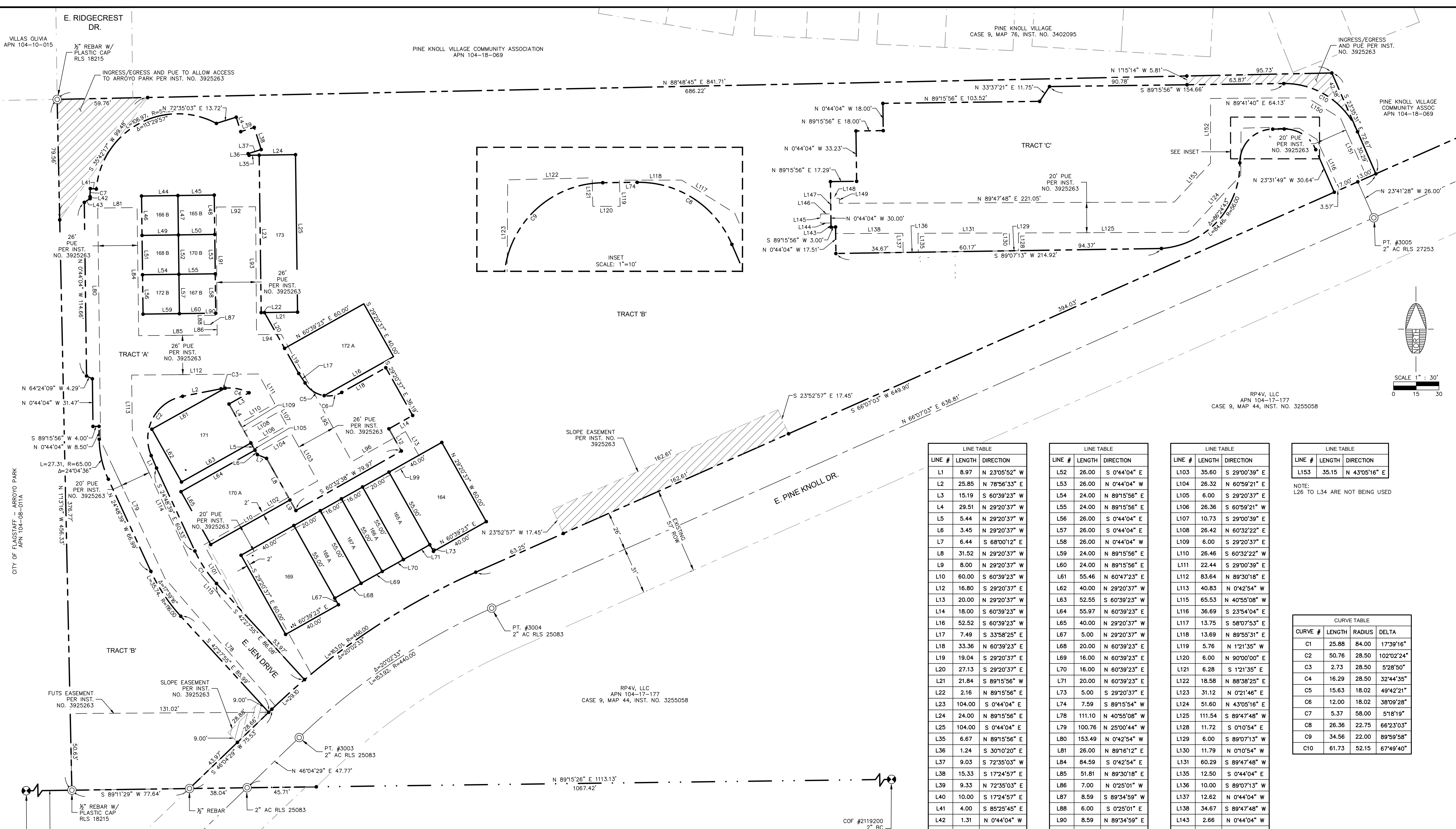
REVISIONS

Call at least two full working days before you begin excavation.
ARIZONA811
 Arizona Blue Stakes, Inc.
 800 84-1111 or 1-800-514-6111 (928-5348)

DRAWING NO.
CVR

SHT NO. OF
 1 3

FILE: P:\2019\19025\DRAWINGS\PLATS\REPLAT 2\19025 - EXISTING PLAT.DWG KBAYER
 PLOTTED: May 19, 2022-10:06am



LOT/TRACT SUMMARY TABLE			
LOT/TRACT ID	AREA (SF)	AREA (AC)	OWNERSHIP
TRACT A	31,057	0.71	RP4V
TRACT B	140,389	3.22	RP4V
TRACT C	29,160	0.67	RP4V
164 A/B	2,400	0.06	RP4V
165 A/B	1,724	0.04	RP4O
166 A/B	1,504	0.03	RP4O
167 A/B	1,504	0.03	RP4O
168 A/B	1,724	0.04	RP4O
169 A/B	2,400	0.06	RP4V
170 A/B	3,000	0.07	RP4O
171 A/B	2,205	0.05	RP4V
172 A/B	2,984	0.07	RP4O
173 A/B	2,496	0.06	RP4V

RIDGE AT CLEAR CREEK APARTMENTS LLC
 APN 104-14-003R
 CASE 8, MAP 25, INST. NO. 3056854

LINE TABLE		
LINE #	LENGTH	DIRECTION
L1	8.97	N 23°05'52" W
L2	25.85	N 78°56'33" E
L3	15.19	S 60°39'23" W
L4	29.51	N 29°20'37" W
L5	5.44	N 29°20'37" W
L6	3.45	N 29°20'37" W
L7	6.44	S 68°00'12" E
L8	31.52	N 29°20'37" W
L9	8.00	N 29°20'37" W
L10	60.00	S 60°39'23" W
L11	16.80	S 29°20'37" E
L12	20.00	N 29°20'37" W
L13	18.00	S 60°39'23" W
L14	16.80	S 29°20'37" E
L15	27.13	N 29°20'37" E
L16	21.84	S 89°15'56" W
L17	2.16	N 89°15'56" E
L18	104.00	S 0°44'04" E
L19	24.00	N 89°15'56" E
L20	104.00	S 0°44'04" E
L21	6.67	N 89°15'56" E
L22	1.24	S 30°10'20" E
L23	9.03	S 72°35'03" W
L24	15.33	S 17°24'57" E
L25	9.33	N 72°35'03" E
L26	10.00	S 17°24'57" E
L27	4.00	S 85°25'45" E
L28	1.31	N 0°44'04" W
L29	4.53	N 57°16'29" E
L30	24.00	N 89°15'56" E
L31	24.00	N 89°15'56" E
L32	26.00	S 0°44'04" E
L33	26.00	S 0°44'04" E
L34	26.00	S 0°44'04" E
L35	26.00	S 0°44'04" E
L36	26.00	S 0°44'04" E
L37	26.00	S 0°44'04" E
L38	26.00	S 0°44'04" E
L39	26.00	S 0°44'04" E
L40	26.00	S 0°44'04" E
L41	26.00	S 0°44'04" E
L42	26.00	S 0°44'04" E
L43	26.00	S 0°44'04" E
L44	26.00	S 0°44'04" E
L45	26.00	S 0°44'04" E
L46	26.00	S 0°44'04" E
L47	26.00	S 0°44'04" E
L48	26.00	S 0°44'04" E
L49	26.00	S 0°44'04" E
L50	26.00	S 0°44'04" E
L51	26.00	S 0°44'04" E

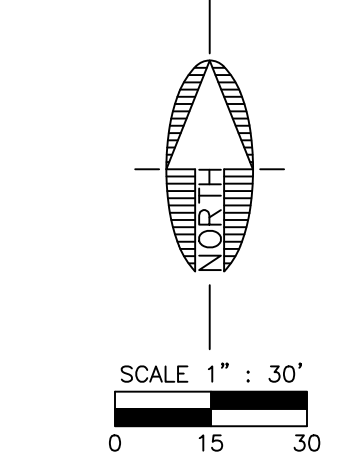
LINE TABLE		
LINE #	LENGTH	DIRECTION
L52	26.00	S 0°44'04" E
L53	26.00	N 0°44'04" W
L54	24.00	N 89°15'56" E
L55	24.00	N 89°15'56" E
L56	26.00	S 0°44'04" E
L57	26.00	S 0°44'04" E
L58	26.00	N 0°44'04" W
L59	24.00	N 89°15'56" E
L60	24.00	N 89°15'56" E
L61	55.46	N 60°47'23" E
L62	40.00	N 29°20'37" W
L63	52.55	S 60°39'23" W
L64	55.97	N 60°39'23" E
L65	40.00	N 29°20'37" W
L66	5.00	N 29°20'37" W
L67	20.00	N 60°39'23" E
L68	20.00	N 60°39'23" E
L69	16.00	N 60°39'23" E
L70	16.00	N 60°39'23" E
L71	20.00	N 60°39'23" E
L72	5.00	S 29°20'37" E
L73	7.59	S 89°15'54" W
L74	111.10	N 40°55'08" W
L75	100.76	N 25°00'44" W
L76	153.49	N 0°42'54" W
L77	26.00	N 89°16'12" E
L78	6.00	S 0°25'01" E
L79	8.59	S 89°34'59" W
L80	51.81	N 89°30'18" E
L81	7.00	N 0°25'01" W
L82	8.59	S 89°34'59" W
L83	6.00	S 0°25'01" E
L84	8.59	S 89°34'59" W
L85	71.49	S 0°25'01" E
L86	26.00	N 89°30'18" E
L87	96.08	S 29°00'39" E
L88	40.53	N 60°39'23" E
L89	132.62	S 60°39'23" W
L90	69.88	S 29°20'37" E
L91	86.09	S 60°39'23" W

LINE TABLE		
LINE #	LENGTH	DIRECTION
L103	35.60	S 29°00'39" E
L104	26.32	N 60°59'21" E
L105	6.00	S 29°20'37" E
L106	26.36	S 60°59'21" W
L107	10.73	S 29°00'39" E
L108	26.42	N 60°32'22" E
L109	6.00	S 29°20'37" E
L110	26.46	S 60°32'22" W
L111	22.44	S 29°00'39" E
L112	83.64	N 89°30'18" E
L113	40.83	N 0°42'54" W
L114	65.53	N 40°55'08" W
L115	36.69	S 23°54'04" E
L116	13.75	S 58°07'53" E
L117	13.69	N 89°55'31" E
L118	5.76	N 121°35' W
L119	50.76	N 28.50
L120	6.00	N 90°00'00" E
L121	6.28	S 121°35' E
L122	18.58	N 88°38'25" E
L123	31.12	N 0°21'46" E
L124	51.60	N 43°05'16" E
L125	111.54	S 89°47'48" W
L126	11.72	S 0°10'54" W
L127	6.00	S 89°07'13" W
L128	11.79	N 0°10'54" W
L129	60.29	S 89°47'48" W
L130	12.50	S 0°44'04" E
L131	10.00	S 89°07'13" W
L132	12.62	N 0°44'04" W
L133	34.67	S 89°47'48" W
L134	2.66	N 0°44'04" W
L135	6.81	S 89°47'48" W
L136	6.00	N 0°12'12" W
L137	6.75	N 89°47'48" E
L138	11.34	N 0°44'04" W
L139	5.75	N 89°49'48" W
L140	4.33	S 0°11'39" E
L141	25.63	S 58°07'53" E
L142	42.85	S 23°54'04" E
L143	42.78	N 0°00'25" W

LINE TABLE		
LINE #	LENGTH	DIRECTION
L135	35.15	N 43°05'16" E

NOTE: L26 TO L34 ARE NOT BEING USED

CURVE TABLE			
CURVE #	LENGTH	RADIUS	DELTA
C1	25.88	84.00	17°39'16"
C2	50.76	28.50	102°02'24"
C3	2.73	28.50	5°28'50"
C4	16.29	28.50	32°44'35"
C5	15.63	18.02	49°42'21"
C6	12.00	18.02	38°09'28"
C7	5.37	58.00	5°16'19"
C8	26.36	22.75	66°23'03"
C9	34.56	22.00	89°59'58"
C10	61.73	52.15	67°49'40"



FLAGSTAFF ARIZONA
 RIO HOMES UNIT 4 PRELIMINARY PLAT
 JOB NO: 19025
 DATE: APR '21
 SCALE: 1"=30'
 DRAWN: JEE
 DESIGN: KMF
 CHECKED: AUB/SEC

110 W. Dole Avenue
 Flagstaff, AZ 86001
 928.773.0354
 928.774.8934 fax
 www.swi.com

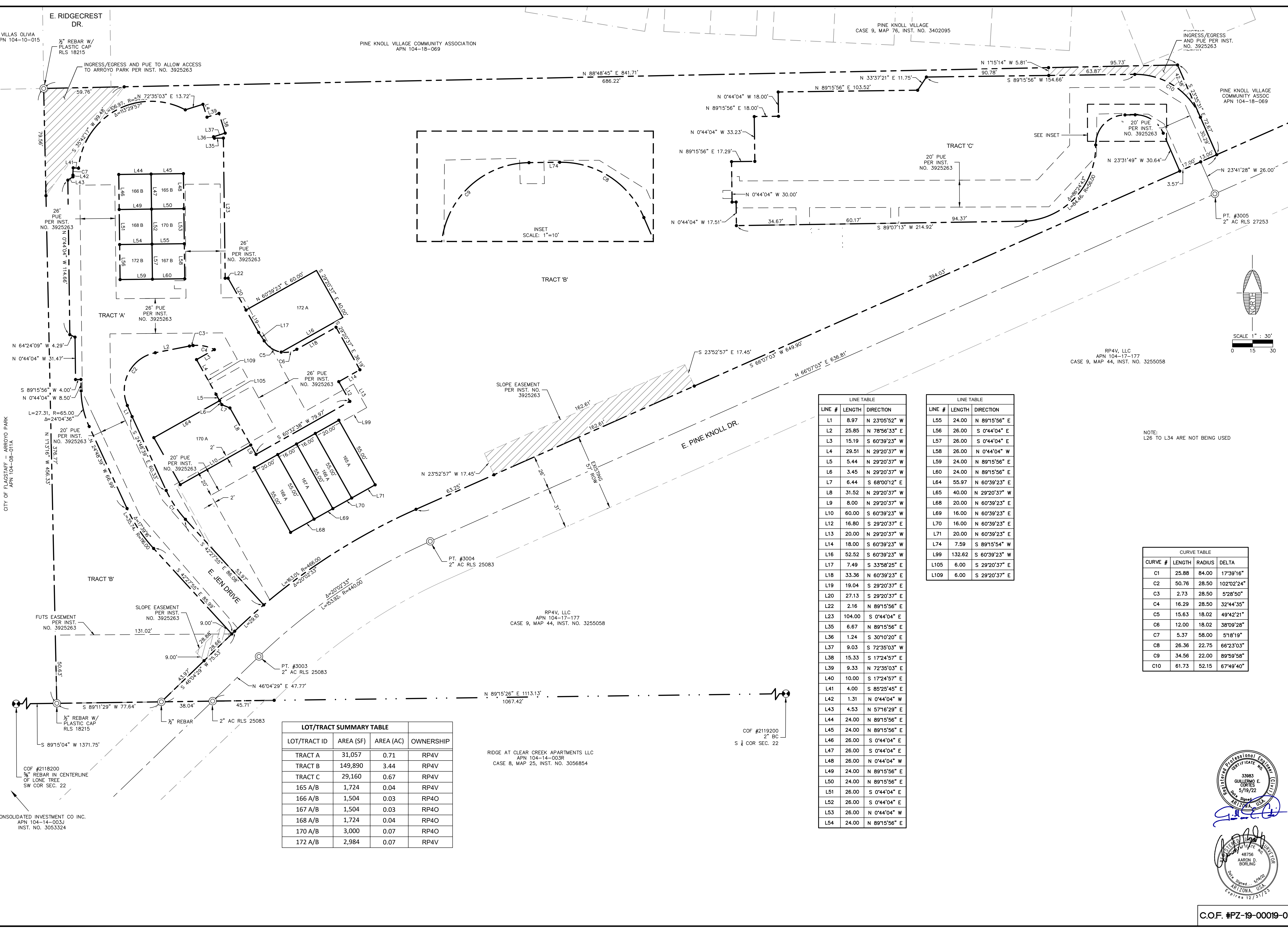
SWI
 Shephard Wesnitzer, Inc.

NO.	DESCRIPTION	DATE	BY

Call at least two full working days before you begin excavation.
 ARIZONA 811
 Arizona Blue Stakes, Inc.
 808 841-1111 or 1-800-514-6111 (Toll-Free)

DRAWING NO. **EP01**
 SHT NO. 2 OF 3
 C.O.F. #PZ-19-00019-07

FILE: P:\2019\19025\DRAWINGS\PLATS\REPLAT 2\19025 - PRELIMINARY PLAT.DWG KBAYER
 PLOTTED: May 19, 2022-10:06am

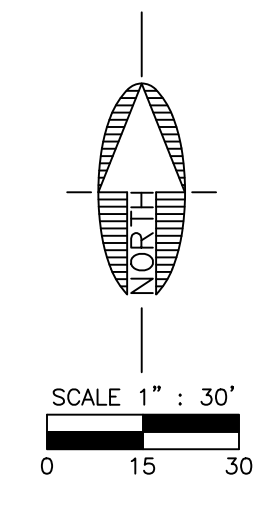


LOT/TRACT SUMMARY TABLE			
LOT/TRACT ID	AREA (SF)	AREA (AC)	OWNERSHIP
TRACT A	31,057	0.71	RP4V
TRACT B	149,890	3.44	RP4V
TRACT C	29,160	0.67	RP4V
165 A/B	1,724	0.04	RP4V
166 A/B	1,504	0.03	RP4O
167 A/B	1,504	0.03	RP4O
168 A/B	1,724	0.04	RP4O
170 A/B	3,000	0.07	RP4O
172 A/B	2,984	0.07	RP4V

LINE TABLE		
LINE #	LENGTH	DIRECTION
L1	8.97	N 23'05'52" W
L2	25.85	N 78'56'33" E
L3	15.19	S 60'39'23" W
L4	29.51	N 29'20'37" W
L5	5.44	N 29'20'37" W
L6	3.45	N 29'20'37" W
L7	6.44	S 68'00'12" E
L8	31.52	N 29'20'37" W
L9	8.00	N 29'20'37" W
L10	60.00	S 60'39'23" W
L12	16.80	S 29'20'37" E
L13	20.00	N 29'20'37" W
L14	18.00	S 60'39'23" W
L16	52.52	S 60'39'23" W
L17	7.49	S 33'58'25" E
L18	33.36	N 60'39'23" E
L19	19.04	S 29'20'37" E
L20	27.13	S 29'20'37" E
L22	2.16	N 89'15'56" E
L23	104.00	S 0'44'04" E
L35	6.67	N 89'15'56" E
L36	1.24	S 30'10'20" E
L37	9.03	S 72'35'03" W
L38	15.33	S 17'24'57" E
L39	9.33	N 72'35'03" E
L40	10.00	S 17'24'57" E
L41	4.00	S 85'25'45" E
L42	1.31	N 0'44'04" W
L43	4.53	N 57'16'29" E
L44	24.00	N 89'15'56" E
L45	24.00	N 89'15'56" E
L46	26.00	S 0'44'04" E
L47	26.00	S 0'44'04" E
L48	26.00	N 0'44'04" W
L49	24.00	N 89'15'56" E
L50	24.00	N 89'15'56" E
L51	26.00	S 0'44'04" E
L52	26.00	S 0'44'04" E
L53	26.00	N 0'44'04" W
L54	24.00	N 89'15'56" E

LINE TABLE		
LINE #	LENGTH	DIRECTION
L55	24.00	N 89'15'56" E
L56	26.00	S 0'44'04" E
L57	26.00	S 0'44'04" E
L58	26.00	N 0'44'04" W
L59	24.00	N 89'15'56" E
L60	24.00	N 89'15'56" E
L64	55.97	N 60'39'23" E
L65	40.00	N 29'20'37" W
L68	20.00	N 60'39'23" E
L69	16.00	N 60'39'23" E
L70	16.00	N 60'39'23" E
L71	20.00	N 60'39'23" E
L74	7.59	S 89'15'54" W
L99	132.62	S 60'39'23" W
L105	6.00	S 29'20'37" E
L109	6.00	S 29'20'37" E

CURVE TABLE			
CURVE #	LENGTH	RADIUS	DELTA
C1	25.88	84.00	17'39'16"
C2	50.76	28.50	102'02'24"
C3	2.73	28.50	5'28'50"
C4	16.29	28.50	32'44'35"
C5	15.63	18.02	49'42'21"
C6	12.00	18.02	38'09'28"
C7	5.37	58.00	5'18'19"
C8	26.36	22.75	66'23'03"
C9	34.56	22.00	89'59'58"
C10	61.73	52.15	67'49'40"



FLAGSTAFF ARIZONA

RIO HOMES UNIT 4 PRELIMINARY PLAT

PRELIMINARY PLAT

JOB NO: 19025
 DATE: APR '21
 SCALE: 1"=30'
 DRAWN: JEE
 DESIGN: KMF/AEE
 CHECKED: AUB/SEC

110 W. Dole Avenue
 Flagstaff, AZ 86001
 928.774.8354
 928.774.8934 fax
 www.swi.coz.com

SWI Shephard Wesnitzer, Inc.

NO.	DESCRIPTION	DATE	BY

REVISIONS

Call at least two full working days before you begin excavation.

ARIZONA 811
 Arizona Blue Stakes, Inc.

33983
 GUILLERMO E. CORTES
 5/19/22
 State of Arizona, USA

48756
 ARNON D. BORLING
 State of Arizona, USA
 Expires 12/31/23

DRAWING NO. PP01

SHT NO. 3 OF 3

C.O.F. #PZ-19-00019-07