



COVID-19 Update

Dashboard Update





Agenda



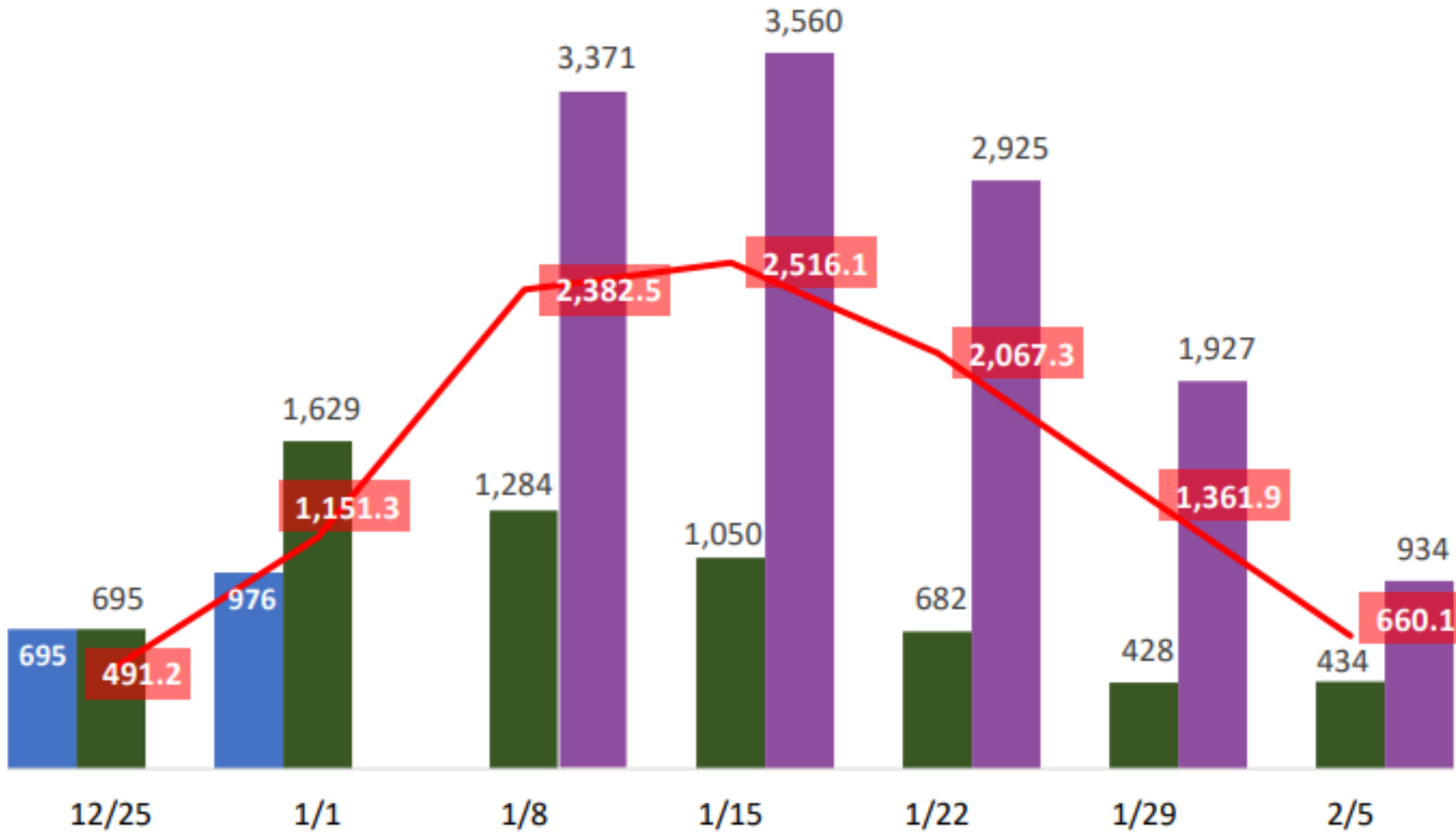
- The Data
 - Coconino County Health and Human Services (CCHHS) dashboard
 - Northern Arizona Healthcare (NAH) hospital census
 - Navajo Nation
 - Hopi Tribe
- Indigenous Nations Update
- Council Meeting Format



CCHHS: COVID-19 Weekly Cases



2020 Cases 2021 Cases 2022 Cases Current Rate per 100,000



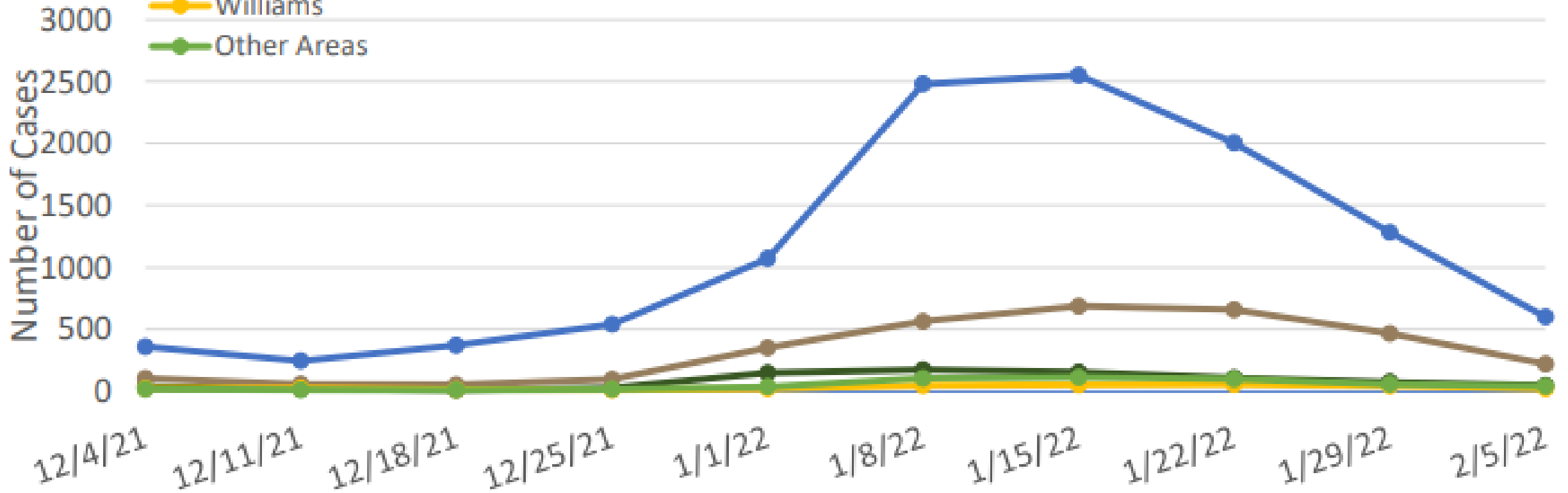


CCHHS: COVID-19 Weekly Cases



- Flagstaff
- Page
- Tribal Communities
- Williams
- Other Areas

COVID-19 Cases by Geographic Area



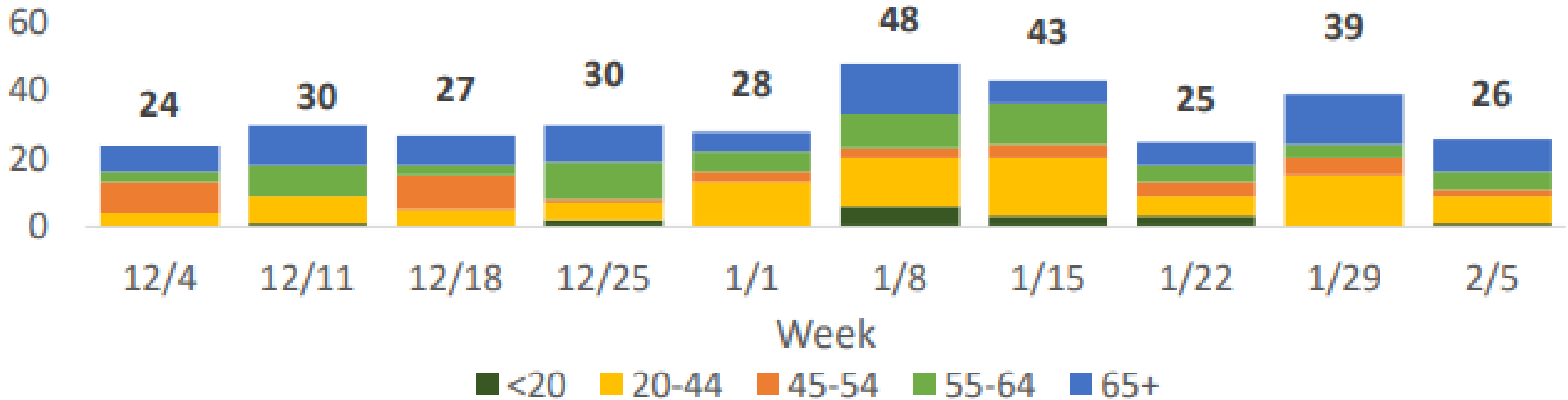


CCHHS: Hospital Admissions



Weekly Case Counts Among Coconino County Residents:

Hospitalized Coconino COVID-19 Patients by Age

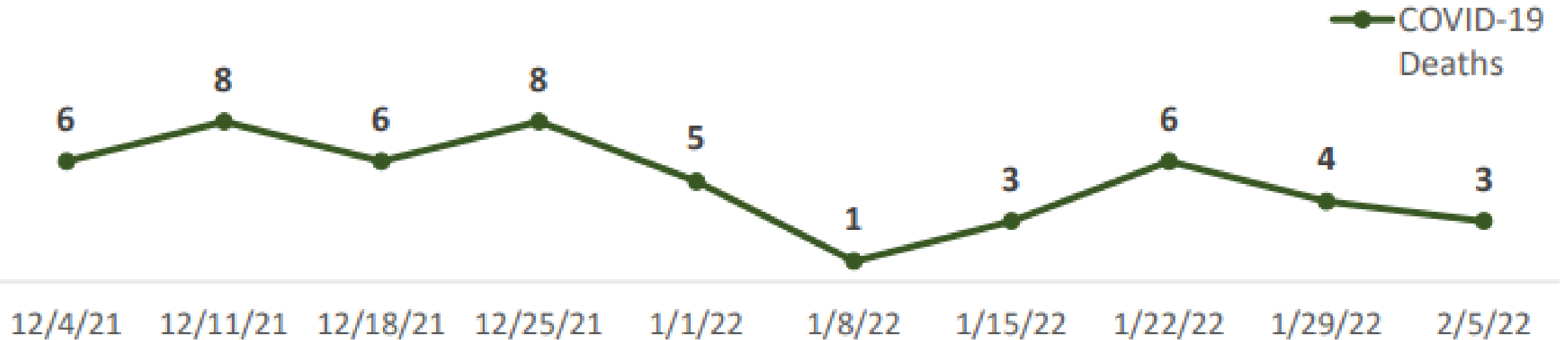




CCHHS: COVID-19 Related Deaths



Weekly COVID-19 Deaths Among Coconino County Residents:





CCHHS: Community Transmission



Cases Reported Week 5 (January 30, 2022 - February 5, 2022):

934
Positive
Cases

48%
Not Fully
Vaccinated

660.1
Rate per
100,000

19.2%
Positivity
Yield

10.6%
COVID-Like
Illness**

Community Transmission

Coconino County is currently at a **High** ** level of community transmission.

Indicator	Low Transmission	Moderate Transmission	Substantial Transmission	High Transmission
Total new cases per 100,000 persons in the last 7 days	0-9	10-49	50-99	≥100
Percentage of PCR tests that are positive during the past 7 days	<5.0%	5.0% - 7.9%	8.0% - 9.9%	≥10.0%



CCHHS: Community Vaccination

Doses in Coconino

People in Coconino

Total number of COVID-19 vaccine doses administered: **213,585**

Total number of people who have received at least one dose of COVID-19: **94,121**

Percent of people vaccinated: **63.9%**

Total number of doses reported yesterday: **222**

Percent of *eligible* people vaccinated: **67.6%**

Number of people who are fully vaccinated against COVID-19: **83,178**

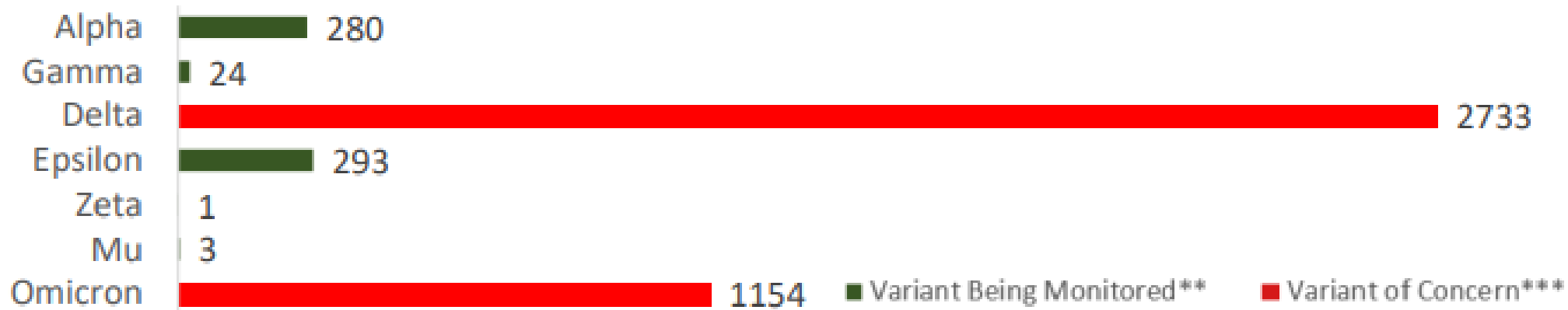


CCHHS: Variants



COVID-19 Variants:

Total Variants Being Monitored** and Variants of Concern***



****Variants Being Monitored include variants for which there are data indicating a potential or clear impact on approved or authorized medical countermeasures or that has been associated with more severe disease or increased transmission but are no longer detected or are circulating at very low levels in the U.S, and as such, do not pose a significant and imminent risk to public health in the U.S.**

***** Variants of Concern include variants for which there is evidence of an increase in transmissibility, more severe disease (e.g., increased hospitalizations or deaths), significant reduction in neutralization by antibodies generated during previous infection or vaccination, reduced effectiveness of treatments or vaccines, or diagnostic detection failures.**

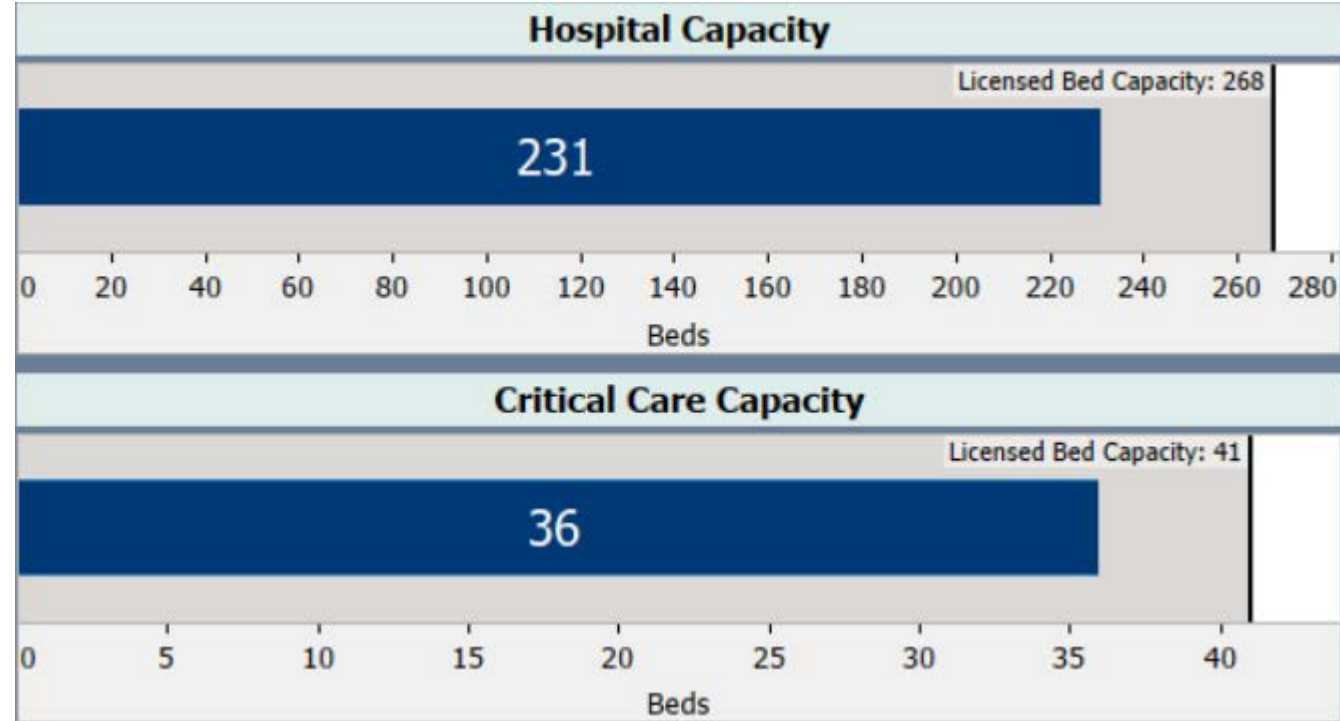
For more information about SARS-CoV-2 variants, please visit the CDC webpage:

[SARS-CoV-2 Variant Classifications and Definitions \(cdc.gov\)](https://www.cdc.gov/sars-cov-2/variant-classifications-and-definitions)



NAH: Hospital Census

Flagstaff Medical Center Hospital Census	
231	
In House COVID-19 Patients	
Positive	Pending
48	



Data as of February 11, 2022



Indigenous Nations Data

Navajo Nation

NN Health Facilities Data	Difference in 14 days	Current Week 2/10/22	Previous Date 1/27/22
Total Tested	+ 15,980	485,509	469,529
Negative Cases	+ 9,650	380,653	371,003
Confirmed Positive Cases	+ 2,498	51,475	48,977
Recoveries	+ 3,935	48,635	44,700
Deaths	+ 17	1,629	1,612



Indigenous Nations Data

Hopi Tribe

- Total cumulative positive total – 2,507
- Total 14 Day active cases – 174
- Total 7 Day active cases – 61
- 78.04% total population vaccinated
- 79.64% total eligible vaccinated



Indigenous Nations Data

- Navajo Nation

- 47% of 2,956 samples tested were Delta variant
- 31% of 2,956 samples tested were Omicron variant
- 64.3% of total population are vaccinated
- 74% of eligible population are vaccinated
- Safer at Home requirements still in effect
- Public Health Emergency Orders remain red status for schools and orange status for businesses
- Health Advisory for 83 communities
- ARPA Hardship Assistance check being issued



Indigenous Nations Data



- Hopi Tribe
 - Remains in phase two of reopening plan until 3/13/22
 - Courts are open from 8:00 am to 3:00 pm



Council Meeting Format



- Hybrid option: supports attendance in person or remotely
- Virtual option: attendance would be remote

Council Questions & Discussion

