



**ENGINEERING DIVISION**  
Capital Improvements Section

**Monthly Capital Projects Report**  
**March 2022**

Honorable Mayor, Vice Mayor and Council,

The March report was completed by our Project Managers on February 25<sup>th</sup> and includes project updates for the month of February.

The attached map is a comprehensive view of all active capital improvements projects in our community that are assigned to the Capital Improvements Section of the Engineering Division, inclusive of projects that are in planning, design, and construction phases.

We have tried to reduce the extent of information provided and focused on only those projects that had substantive progress from previous months or have key milestones to share.

If you would like to receive more information on a specific project, please reach out and we'd be glad to share more detailed information.

## **Active Transportation Master Plan**

On September 13, 2021, the City released the draft Active Transportation Master Plan (ATMP) for a 60-day public comment period. The ATMP will serve as a guide to enhancing walking and biking in Flagstaff. The draft document includes detailed information regarding pedestrian and bicycle accommodation and establishes a series of goals, policies, and strategies to support walking and biking.

- The community survey for the ATMP recently closed, with 250 surveys completed. Staff is in the process of compiling results.
- Presentations on the draft ATMP have been made to a variety of City commissions:

Diversity Awareness	Inclusion and
Adaptive Living	
Open Spaces	Parks and Recreation
Planning and Zoning	Sustainability
Tourism	Transportation
Housing	
- A series of five community open houses were conducted during the 60-day public review period to inform the public, discuss the contents of the plan and provide opportunity for community questions and feedback:
  - Wednesday, September 29, 2021 | 6:00 - 7:00 p.m.
  - Thursday, October 7, 2021 | 6:30 - 7:30 p.m.
  - Saturday, October 16, 2021 | 10:00 a.m. - 12:00 noon @ Bushmaster Park
  - Tuesday, October 19, 2021 | 12:00 noon - 1:00 p.m.
  - Wednesday, October 27, 2021 | 5:30 - 6:30 p.m.
- Rick Barrett and Martin Ince of the Engineering Division were [interviewed by Peter Bruce on KAFF radio](#) on Tuesday, October 5, 2021.
- Staff continues to refine the 20-year program of pedestrian and bicycle projects that will be funded with the pedestrian/bicycle portion of the transportation sales tax and Mountain Line's first/last mile grant. An interactive map of planned sidewalks, bikeway, FUTS trails, enhanced crossings, and grade-separated crossings is available at [this link](#).
- The ATMP will be accompanied by a minor amendment to the Regional Plan to incorporate infrastructure maps from the ATMP and some of its general language. A draft of the minor Regional Plan amendment [can be viewed here](#). The plan amendment was recently reviewed internally as part of the IDS process; substantive comments regarding the amendment will be available soon and will be incorporated into the modification.
- The [draft ATMP can be downloaded here](#). For more information, [go to the ATMP webpage](#).

### **City of Flagstaff**



## **DRAFT Active Transportation Master Plan**

## Woody Way

A citizen petition was submitted to Council for discussion on September 23, 2021 to make Woody Way a one-way street westbound, while still allowing for emergency vehicular access. Staff gave a presentation to Council explaining background of the Woody Way Gate and touched on some of the data that has been, and will be, collected. Since this issue has already been in the hands of the Transportation Commission, Council decided to not allow the FAIR item to move forward and to let the Commission make a recommendation to Council on a decision for the connector roadway.

### **Project Update:**

- Additional traffic calming measures will be installed by Public Works and include raised cross walks where Woody Way intersects Mission Timber and Ax Handle Way, and where Highland Mesa Rd intersects Ax Handle Way. These locations will also have stop bars and double center lines striped. The new striping will be completed in the Spring of 2022 once the weather is warmer. The raised cross walks will be designed and constructed concurrently with the permanent calming measures on University Avenue. Additional traffic calming measures also include installing no parking signs on the north side of Woody Way. Work orders for the striping and no parking sign have already been submitted.



*Striping Example: WB Approach of Highland Mesa Rd & Ax Handle Way*

## **Boulder Pointe – University Avenue Traffic Calming**

- Through the removal of the Woody Way gate that once separated the neighborhoods of Presidio and Boulder Pointe, staff discovered that speeds on University are high enough to warrant traffic calming measures. We have presented to the Transportation Commission concepts for traffic calming and invited the public and HOA's for input. The outcome was to install temporary center island medians and a bump out using candlesticks, along with a radar feedback sign at each end of the straightaway on University. Public Works installed the temp traffic control along University in June 2021. Traffic counts have been collected to see if the temp traffic calming measure have worked and the 85<sup>th</sup> percentile speed has decreased by 2 mph in both locations on University.

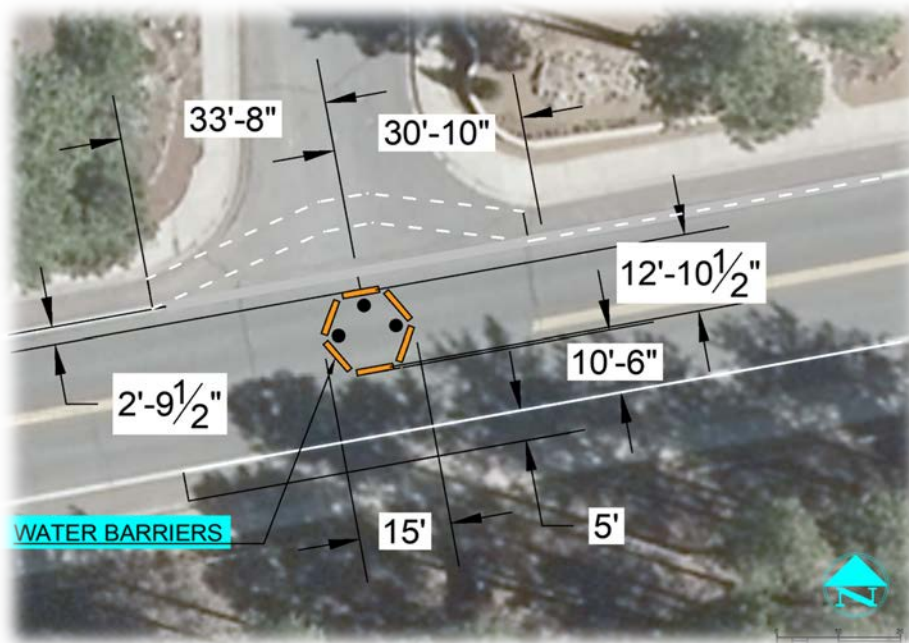


*Radar Feed Back Sign WB University*



*Candle Sticks on University*

- Transportation Commission reviewed modifications to the University at Tombaugh temporary traffic calming setup at their December 1 meeting. The commission heard public comment and recommended staff move forward with a new design utilizing curb extensions and a neighborhood mini circle. The traffic circle has been drafted in AutoCAD and has been verified to be able to support the turning radius of the largest vehicles using the circle through vehicle tracking. The old traffic calming measures were removed on Thursday February 10, 2022, and the temporary traffic circle was installed on Friday February 11, 2022. This setup will be evaluated with a traffic study once the weather permits in order to determine how it impacts traveling speeds.



*Temporary Traffic Circle Striping/Implementation Plan*



*Eastbound View of the Temporary Traffic Circle*

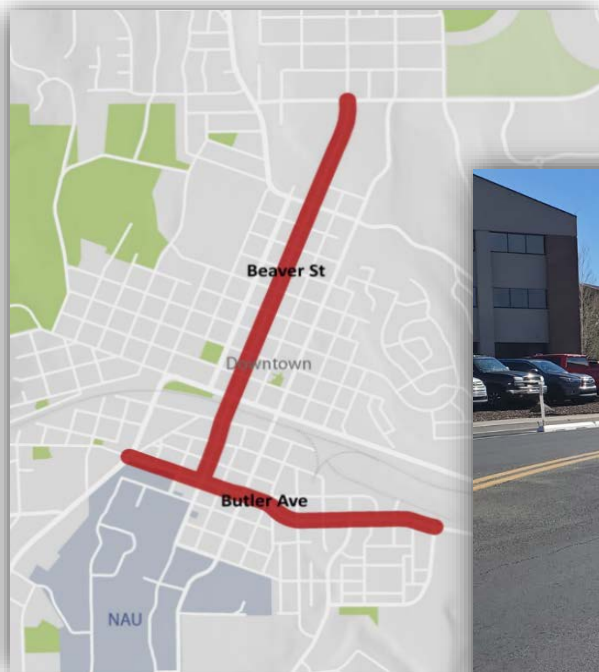
## **Protected Bike Lane Pilot Projects (Butler Avenue & Beaver Street)** (DESIGN & CONSTRUCTION PHASE)

FUND: TRANSPORTATION TAX (BICYCLE AND PEDESTRIAN PROJECTS)

**Description** – At Council’s July 6, 2021 meeting, staff was directed to pursue two pilot projects intended to enhance the safety and overall experience of the community’s cyclists in our downtown area. Depicted in the map below, Council directed staff to move forward with the concrete & candlestick treatment on both pilot projects with a target completion by December 30, 2021. The Butler Ave pilot project’s scope consists of the approved treatment and some additional striping between Milton Rd. and Sawmill Rd., approximately 0.9 miles. The Beaver St. pilot project’s scope consists of the approved treatment, some lane obliteration and restriping, where applicable between Forest Ave. and Butler Ave., approximately 1.2 miles.

### **Project Update :**

- As these are pilot projects, staff is taking the winter and the upcoming Spring months to collect data and observe the functional and maintenance impacts of this new infrastructure in the City’s network.



Beaver Ave., looking south, just south of Forest Ave.

## **Spruce Wash – Cedar to Dortha and Dortha Inlet** (Design Phase)

FUND: STORMWATER

**Description** - Design consists of improvements to the Spruce Wash Channel from Cedar Avenue to south of Dortha Avenue. This work is in response to the damage that occurred during the 2021 monsoon flooding from the Museum Fire burn scar.

- City staff conducted property owner meetings the week of February 14 to discuss the project improvements, acquisition of a drainage easement, and rights of entry to expedite construction.
- Staff provided a monthly update to Council on February 22, which included discussion of clean-up efforts, the feasibility study and modeling, pending projects, the siren system, and communications.
- Engineering plans were routed for City signature on February 25.
- Coordination continues between the contractor and Unisource for utility relocations.
- Museum Flood Engineering and Feasibility team meetings continue every Monday and City staff has initiated monthly meetings with County Supervisor Jeronimo Vasquez.
- While there are utility and property related challenges to this project, construction of these improvements will occur prior to the 2022 monsoon season.



*Spruce Wash north of Dortha Avenue*



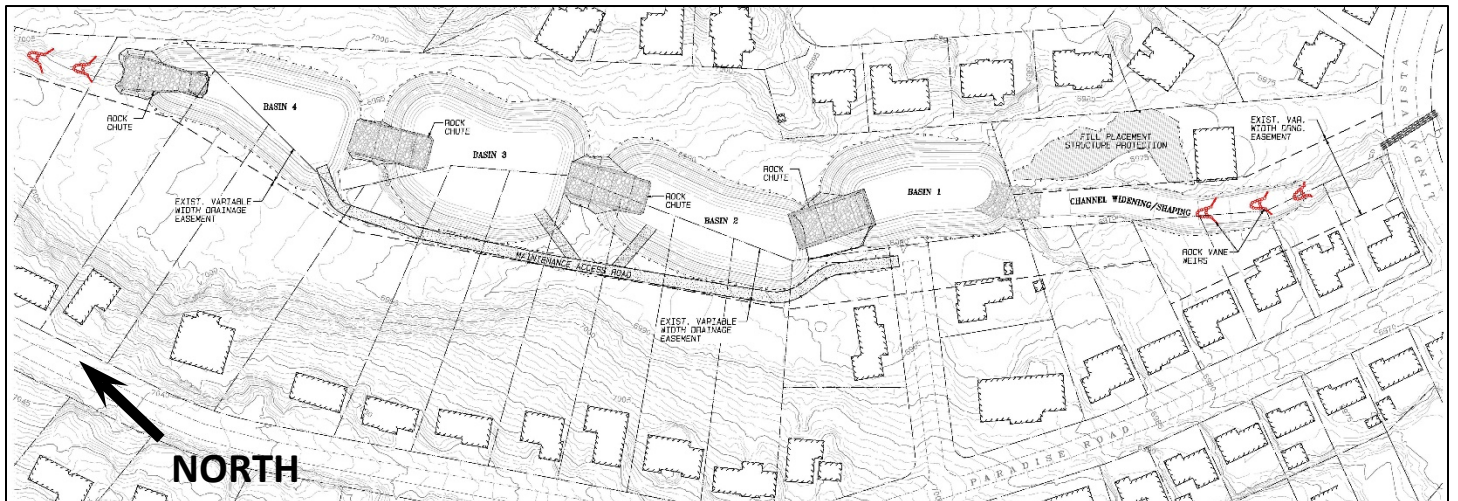
*Spruce Wash – looking south at Dortha Avenue*

## **Spruce Wash – Park Basins** (Design Phase)

FUND: NRCS GRANT/STORMWATER

**Description** – This project adds four sediment basins and five rock vein weirs below the recently-completed Spruce Wash Channel Widening Project (northern end of Paradise Road) and upstream of Linda Vista Drive. These basins will be part of a sediment deposition system for flood waters from the Museum Fire burn shed before conveyance to the Sunnyside neighborhood.

- City will acquire property rights to support the County Flood Control District (CFCD) project management and is working on property classifications and evaluating drainage easements within the project extent.
- National Resource Conservation Services (NRCS) grant is not able to fund property acquisition so City Stormwater funding will be used for this purpose.
- City will keep the park designation for the city parcel and is considering development of a trailhead for Forest Service access that respects the Beal Wagon Road historical alignment in the area.
- Natural Channel Design (NCD) will be completing the project design. Currently plans are at 15-percent.
- CFCD received funding of \$3.5M for work out of the city and includes the Park Basins. The timeframe is 220 days.
- Property acquisition had begun, beginning with discussions with property owners regarding design of the basins.



*Project Extent from 30% Plans. Paradise Road is on the Bottom; Linda Vista Drive is on the Right.*

## **La Plaza Vieja Traffic Calming** (CONSTRUCTION PHASE)

FUND: TRANSPORTATION TAX (SAFETY) & HOUSING [CDBG] ALLOCATION

**Description** – The project is assisting the neighborhood by improving pedestrian safety of crosswalks, sidewalks, bike lanes and storm drainage at the Kingman Street and Florence Street/Malpais Lane intersections along Clay Avenue.

**Contractor** – Kinney Construction Services

### **Project Update:**

- Concrete curb/gutter, sidewalk, and sidewalk ramps are complete on the south side of Kingman/Clay.
- The catch basin and storm drain improvements are complete across Clay.
- The fire hydrant assembly replacement on the north side of the Kingman/Clay intersection is complete.
- Concrete curb/gutter, sidewalk, and sidewalk ramps on the north side of the Kingman/Clay intersection installations were completed the week of 2/14/2022.
- A Winter Shutdown was issued effective 12/17/2021 and is still in effect, which KCS is choosing to continue to work through.
- The week of 2/28 weather and conditions are anticipated to allow for the permanent asphalt removal and replacements.
- Kingman St. from Tombstone Ave. to Clay Ave. is closed to through traffic. The north half of Clay Ave. is closed to all traffic between Globe St. and Malpais Ln. and the south half is a eastbound one-way travel lane that allows traffic past the construction and pick up and drop off for the Haven Montessori School. Detour routes are posted for west bound Clay Ave. closure starting at Malpais Ln. and the traveling public is encouraged to seek an alternate route.



*Kingman/Clay intersection looking east at final sections of concrete being prepared for replacement.*

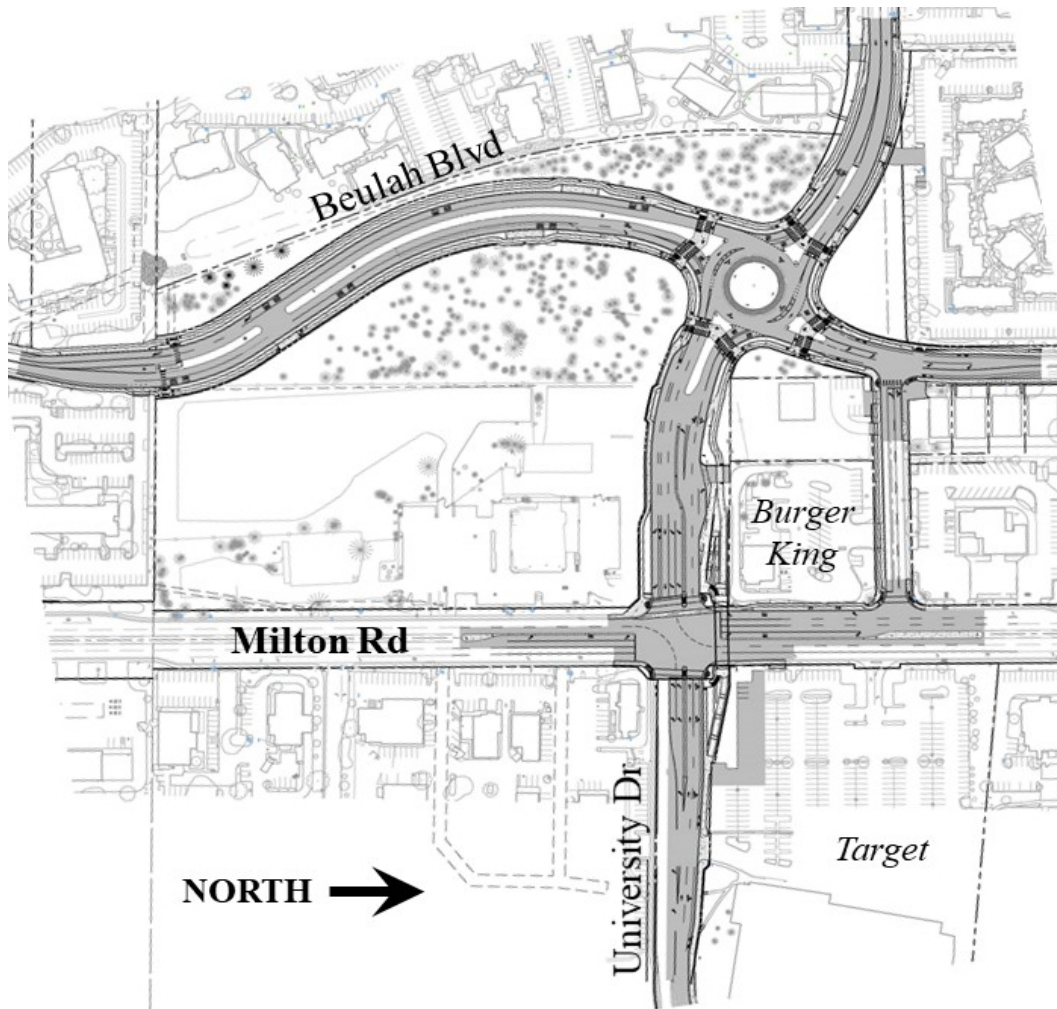
## **Beulah Boulevard Extension/University Drive Realignment** (DESIGN PHASE)

FUND: TRANSPORTATION TAX (STREETS)

**Description** – This project extends the northern terminus of Beulah Boulevard to connect with University Drive. Furthermore, University Avenue (west of Milton) will be realigned to match up with University Drive (east of Milton). A new roundabout will be constructed where Beulah Boulevard and University Drive will intersect.

### **Project Update:**

- Shephard-Wesnitzer, Inc. (SWI) is the design engineer.
- Eagle Mountain Construction (EMC) is the CMAR contractor.
- 90% design plans are being reviewed by project stakeholders. The review will likely take approximately 4-6 weeks and comments should be fully integrated by mid-March.
- Design work will continue to Final 1s (95%) and Final 2s (100%), which are the construction-ready documents. Final 2s should be completed by late May.
- Construction will be two phases over two construction seasons; starting in June/July 2022 concluding in July 2024.



*Extent map of new Beulah and University Roadway Project – taken from 90% plans.*

## **Coconino Estates Improvements Phase II** (CONSTRUCTION PHASE)

FUND: ROAD REPAIR & STREET SAFETY & AGING WATER AND SEWER INFRASTRUCTURE REPLACEMENT PROGRAMS

**Description** - This is a utility and roadway improvements project located on several streets in the Coconino Estates neighborhood as seen in the map below. Improvements on the streets generally consist of replacing all existing utility and roadway infrastructure. The utility improvements include replacing the existing water and sewer mains, water and sewer services, fire hydrants, and manholes. The roadway improvements include replacing the existing asphalt roadway, replacing rolled curb with vertical curb, constructing driveway ramps at driveway entrances, and replacing select sidewalk only where it currently exists on Crescent Drive. Sidewalk will NOT be installed where it does not currently exist. For additional information visit the Project website at [www.coconinoestates.com](http://www.coconinoestates.com)

**Contractor** - Standard Construction Company

### **Project Update:**

#### **Crescent Drive and Meade Lane**

- Sewer installations and temporary roadway trench patches are complete.
- Water main installations and temporarily patching roadway water trenches are complete, with testing and public and private connections remaining.
- Water service installations were completed the week of 2/7/2022 and temporarily patching roadway water service trenches will continue as weather allows.
- Water main and service installations and temporary roadway trench patches are complete on Meade, with testing and public and private connections remaining.
- Crescent is closed to through traffic from Meade to the Talkington/Louise intersection, with detours posted around the closure for non-residential traffic.

#### **Navajo Drive and Elizabeth Road**

- Sewer installations and temporary roadway trench patches are complete.
- Water main and service installations were completed the week of 2/14/2022.
- Navajo is closed to through traffic.

#### **Talkington Drive and Side Streets**

- the week of 3/7/2022 sewer installations are anticipated to begin at the Meade intersection working north.
- Talkington Drive is anticipated to be closed to through traffic the week of 3/7/2022.



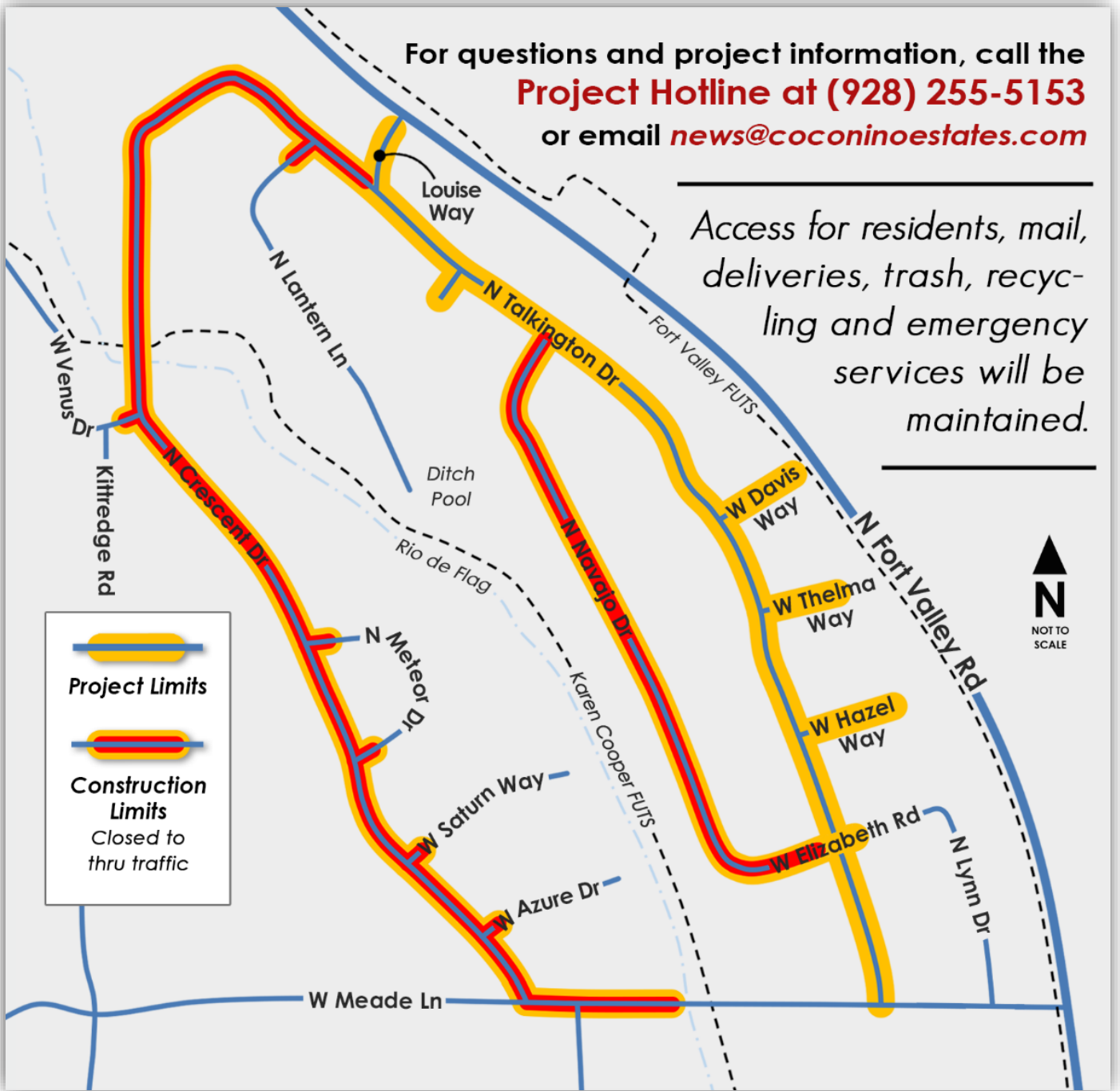
*Navajo Dr. at Elizabeth Dr., looking north at final water service installations.*



*Crescent Dr. at Talkington corner, looking northwest at new water main construction.*

For questions and project information, call the  
**Project Hotline at (928) 255-5153**  
or email [news@coconinoestates.com](mailto:news@coconinoestates.com)

Access for residents, mail,  
deliveries, trash, recycling  
and emergency  
services will be  
maintained.



Coconino Estates Improvements Phase II Project Map



## **West Flag Improvements - Canyon Terrace** (CONSTRUCTION PHASE)

FUND: ROAD REPAIR & STREET SAFETY

**Description** - This is a utility and roadway improvements project located Canyon Terrace Drive as seen in the map below. The Project originally included David Drive and Hutcheson Drive and was bid as one project in the spring of 2020 but was pulled at the end of the bidding process given the economic and funding source uncertainties due to the COVID 19 Pandemic. It was decided to split the Project into two separate projects consisting of 1. David/Hutcheson and 2. Canyon Terrace. Improvements on the streets generally consist of replacing all existing utility and roadway infrastructure. The utility improvements include replacing the existing water and sewer mains, water and sewer services, fire hydrants, and manholes. The roadway improvements include replacing the existing asphalt roadway and select curb and gutter. For additional information visit the Project website at [www.Flagstaff.az.gov/westflagimprovements](http://www.Flagstaff.az.gov/westflagimprovements).

**Contractor** - Mountain High Excavating

### **Project Update:**

- Water and sewer main and service installations are complete.
- Roadway paving is complete.
- Concrete driveway, curb, and valley gutter replacements are complete.
- Manhole and water valve adjustments within the roadway are complete
- A preliminary punch list walkthrough occurred on 2/14/2022.
- Landscape restorations and few remaining items of work will be completed as soon as weather and conditions allow and are anticipated to be completed no later than early this spring.
- A Winter Shutdown was issued effective 12/17/2021, which MHE is choosing to continue work through.
- Work zones will vary during this final remaining work.



## **Coconino Estates Improvements Phase I** (CONSTRUCTION PHASE)

FUND: ROAD REPAIR & STREET SAFETY

**Description** - This is a utility and roadway improvements project located in the Coconino Estates neighborhood on Beal Road from Rockridge to Fort Valley, Navajo Drive from Navajo Road to Murray, Whipple Road from Navajo Drive to McMillan, and Navajo Road from Navajo Drive to Fort Valley. Improvements on the streets generally consist of replacing existing infrastructure with new, including water and sewer mains, water and sewer services, fire hydrants, storm drains, streetlights, the entire asphalt roadway, and defective select edge improvements (curb & gutter, sidewalk, etc.), except for Whipple Road which will only receive a new water main. There will also be new infrastructure added consisting of underground electric lines for streetlighting and sidewalk on both sides of the street where it does not currently exist on Beal Road, Navajo Drive south of Beal, and on Navajo Road. For additional information visit the Project website at [www.coconinoestates.com](http://www.coconinoestates.com).

**Contractor** - Eagle Mountain Construction

### **Project Update:**

A new way of communicating project information has been started with the installation of a new project sign and banner prototype that include a QR code for the public to scan and view more information on the Project website.

### **Navajo Road (Construction Zone #1)**

- Utility, roadway, and landscape restorations are complete.
- Navajo Road is open to all traffic.

### **Navajo Drive south of Beal (Construction Zone #2)**

- Utility, roadway, and landscape restorations are complete.
- Navajo Drive south of Beal is open to all traffic.

### **Beal Road (Construction Zone #3)**

- Utility and roadway improvements are complete as well as landscape restorations, except for the sod replacements at 510 Beal that will occur this spring.
- Minor striping improvements will be corrected at a later date when temperatures allow.
- Construction activities on Beal, west of the Rio de Flag, will pause for the winter and resume this spring.
- Beal is open to all traffic.

### **Navajo Drive north of Beal (Construction Zone #3)**

- Water main and service installations, testing, and connections are complete from Beal to Whiting and on Whipple from Navajo to McMillan.
- Water main and service installations were complete from Whiting to Anderson the week of 2/14/2022, with testing and connections remaining.
- Sewer main and service installations are complete up to Whiting and will continue north.
- Navajo from Beal to Anderson is closed to thru traffic, with detours posted around the closure.
- Whiting from Navajo to Kutch is closed to thru traffic, with detours posted around the closure.
- Whipple from Navajo to 180 is closed to thru traffic, with detours posted around the closure.
- McMillan from Beal to Whipple is closed to thru traffic, with detours posted around the closure.

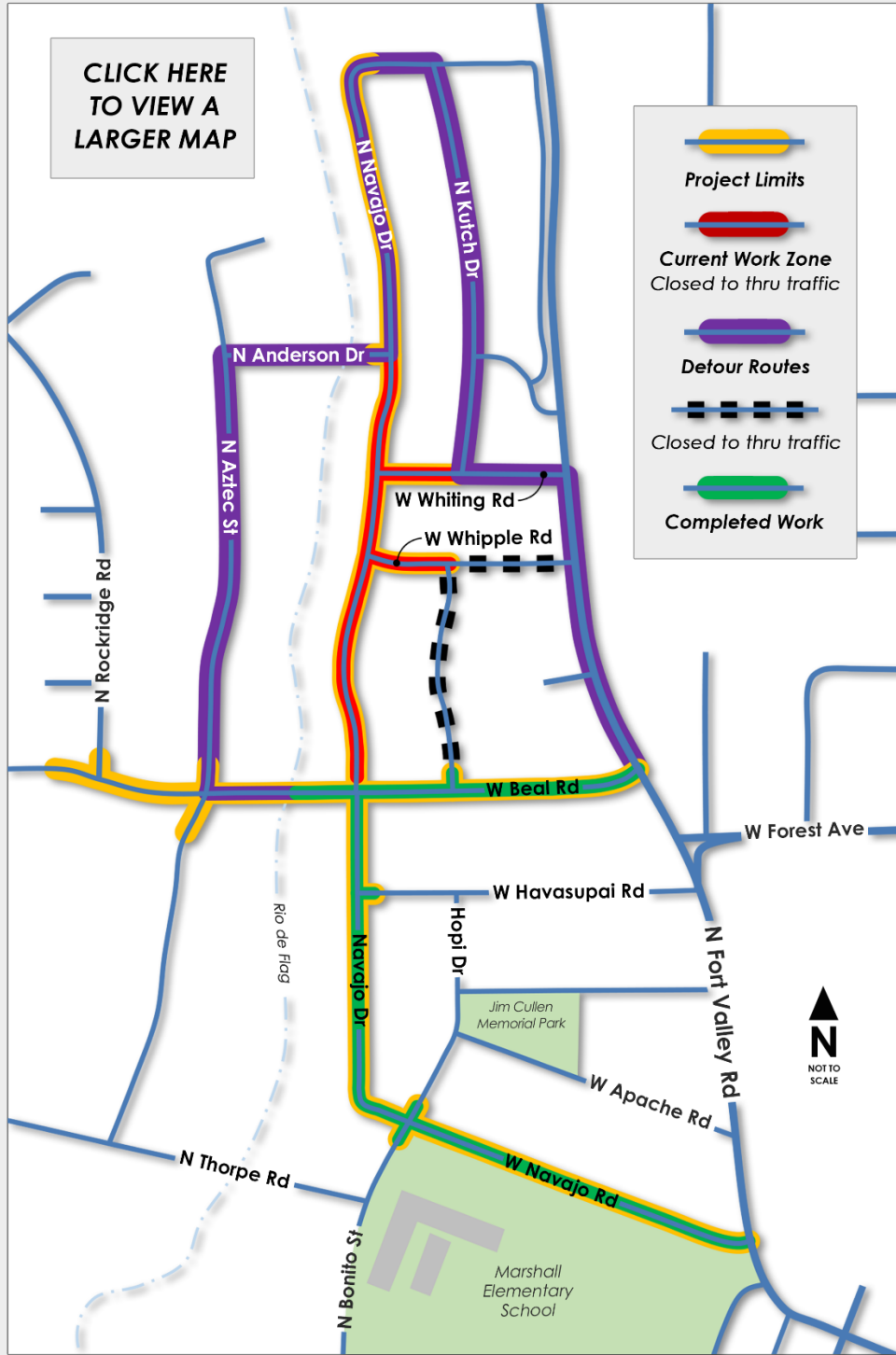


*Navajo Dr. south of Anderson Dr., looking north at the water main and service installations.*



*Navajo Dr. at Whiting Rd., looking north the sewer main installations.*

CLICK HERE  
TO VIEW A  
LARGER MAP



For general questions  
and project  
information, call the  
**Project Hotline at  
(928) 255-5153**  
or email  
[news@coconinoestates.com](mailto:news@coconinoestates.com)



Residential access for mail, deliveries, trash,  
recycling, and emergency services will be  
maintained. No Mountain Line bus routes  
are affected during this time.

Project Map with current road closures and detours.

## **Flagstaff Downtown Mile Project** (PLANNING AND DESIGN PHASE)

FUND: TRANSPORTATION, STORMWATER, AGING INFRASTRUCTURE, BNSF RAILWAY, METROPLAN, GRANTS

**Description** - The Downtown Mile Project consists of a group of City and local agency projects located in Downtown Flagstaff and surrounding the BNSF Railway corridor. They include:

- The Rio de Flag Flood Control Project
- The Rio de Flag Pedestrian Tunnel
- The Lone Tree Overpass
- The Florence to Walnut Pedestrian Underpass
- The Mountain Line Downtown Connection Center (DCC)
- The Milton Bridge Reconstruction



The city has partnered with ADOT, BNSF Railway, Mountain Line, Amtrak, and the Army Corps of Engineers for the overall Downtown Mile Project in order to coordinate existing funding, plan construction efficiencies surrounding the BNSF corridor, investigate multimodal connectivity, and to seek grant funding for unfunded BNSF mitigation measures to deliver these projects for the Flagstaff community.

The City applied for a USDOT RAISE Planning Grant in July 2021 to fund these planning activities and we received notice in early November that we were not successful. In lieu of the grant, supplemental funding from the City of Flagstaff, MetroPlan, and BNSF has been dedicated to continue the planning and design effort.

**Project Update:**

- The Request for Statements of Qualification draft was completed for planning and design of the Downtown Mile associated projects master plan and is under review with Procurement staff. Advertisement is anticipated for March.
- Staff coordinated development of the IGA with MetroPlan to execute receipt of a \$490,000 funding contribution that was approved for the project planning and design effort.
- City and BNSF staff worked on planning the Construction and Maintenance Agreement documents required for the project components, with Phase I of the Rio de Flag being priority.

The current updates for the projects included in the Downtown Mile are as follows:

**Rio de Flag Flood Control Project** (Design Phase)

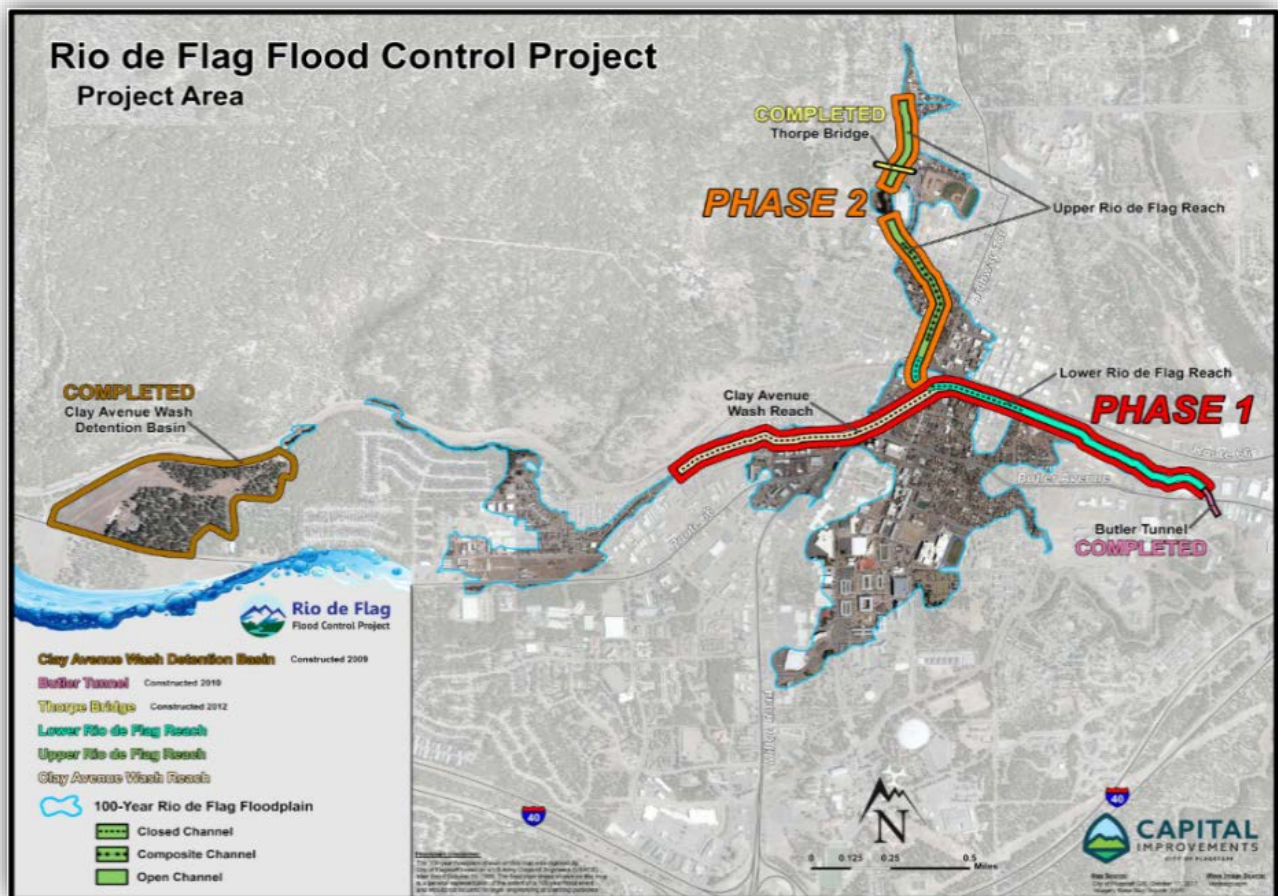
FUND: STORMWATER & AGING INFRASTRUCTURE

**Description** - Design consists of channel improvements along both the Rio de Flag and Clay Avenue Wash channels through central Flagstaff and includes a combination of underground concrete box culverts, open channel, and composite channel. The composite channel section has both an underground culvert to carry large volumes of water and a smaller open channel on top, which will provide an aesthetic element of flowing surface water during rainfall events. Total project length is approximately 15,000 feet.

The purpose of the Rio de Flag Flood Control Project is to remove the hazards associated with the hundred-year storm event, which include property damage, life safety concerns, and community economic impacts. From research conducted by the Army Corps, it was determined that a significant flood would damage approximately 1,500 structures valued at over \$916M and cause \$93M in economic damages, for a total impact of over \$1 Billion dollars.

**Project Update:**

- Work continued this month on refinement of the design plans and development of the real estate documents.
- Staff and BNSF continued coordination of the draft Construction and Maintenance Agreement.



### Rio de Flag Pedestrian Tunnel (Design Phase)

FUND: STORMWATER & AGING INFRASTRUCTURE

**Description** - The Rio de Flag Pedestrian Tunnel will be constructed along with the flood control channel improvements under the BNSF corridor. The undercrossing will also be constructed under the ADOT Route 66 corridor. This will be a FUTS facility which will link north downtown and City Hall with the Southside neighborhood and the future Mountain Line DCC. Project progress will be reported in the Rio de Flag Flood Control Project item above.

### Lone Tree Overpass Project (DESIGN PHASE)

FUND: TRANSPORTATION

**Description** - The Lone Tree Overpass Project will provide a grade-separated crossing over the future Rio de Flag drainage and the BNSF Railway corridor from Butler Avenue to Route 66. Funding for this project is provided through voter approved bonds as designated in the 2018 Proposition 420. The project will also include improvements from Butler south to Sawmill Road, which will be funded by Proposition 419. The project will be delivered via the Design-Build process and the team includes Ames as the contractor and WSP as the prime design consultant.

#### **Project Update:**

- Property acquisition is proceeding with appraisals, relocations, and offers to property owners.
- City Beautification staff presented an on-line survey to the public for soliciting ideas on the aesthetics and public art components of the project.

- A Request for Quotes was advertised for a solicitation of artists that were interested in providing beautification and public art services for the project.
- On February 9, the Mayor, Council members, and staff held a field meeting at the Butler and Lone Tree intersection to discuss the intersection improvements, traffic, and bicycle and pedestrian safety.
- The project team finalized Contract Amendment #2 to Ames Construction, which will cover substantial design completion over the next year. This amendment will be presented to Council for consideration on March 1.
- The project team held a meeting with ADOT on February 11 to discuss the intersection of Butler and Lone Tree, impacts to the Route 66 corridor, and the approach to developing a revised Traffic Impact Analysis that proposes a five-lane per leg intersection at Butler. Staff will return to Council during a work session to present refinement of the preferred intersection alternatives.



**Florence to Walnut Pedestrian Tunnel** (Design Phase)

FUND: TRANSPORTATION

**Description** - Design consists of a FUTS undercrossing of the BNSF corridor that will link Walnut Street and Florence Street in the La Plaza Vieja neighborhood. This project is in the approved La Plaza Vieja Neighborhood Specific Plan and is designed and funded. Upon investigation of the final rail relocation, the design will most likely need to be modified.

### **Milton Bridge Reconstruction** (Planning Phase)

FUND: STORMWATER, AGING INFRASTRUCTURE, AND TRANSPORTATION

**Description** - The City is currently investigating reconstruction of the existing Milton Bridge structure to accommodate a third mainline track for BNSF and to provide a standard bridge clearance. The current clearance is 13'9" and the standard height is 16'6". The realignment and reconstruction will allow the City to construct the structures for both the Florence to Walnut pedestrian undercrossing and the Rio de Flag flood way and pedestrian tunnel while minimizing operational impacts and construction risk to the BNSF mainline. A minimum of two active tracks are required to be maintained for BNSF operations.

#### **Project Update:**

- Phase II of the concept engineering study was completed and presented to ADOT and BNSF staff on February 18. Discussion points included railroad horizontal and vertical realignment, Milton Road reconstruction, Bridge reconstruction, Milton/Sitgreaves/Santa Fe intersection alignment, phasing, and cost.

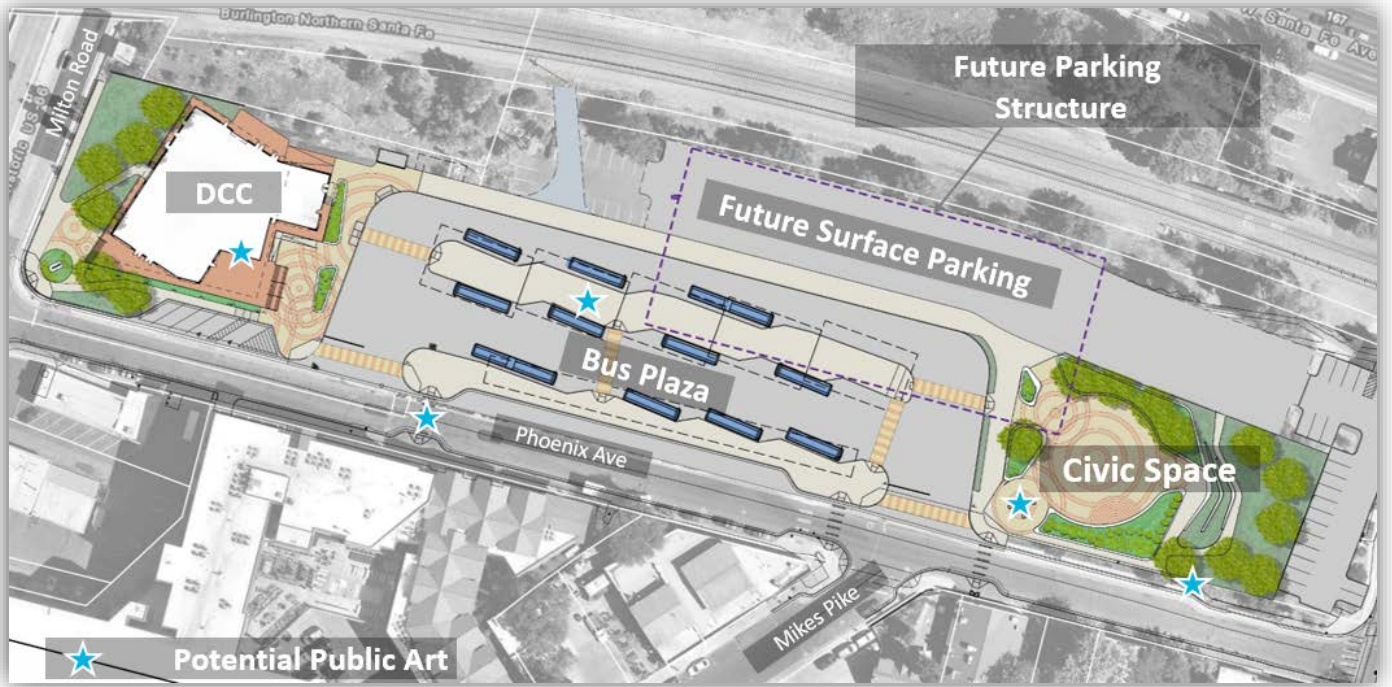
### **Mountain Line Downtown Connection Center** (Design Phase)

FUND: GRANT

**Description** - The Downtown Connection Center is included in the Downtown Mile project report due to the City's partnership with Mountain Line for developing the site and the opportunity to plan the facility with multimodal connections with the rest of the Downtown Mile projects. There are also current discussions for future co-location of the Amtrak Station.

#### **Project Update:**

- The City is facilitating coordination of the DCC site improvements with the future Rio de Flag construction.
- On December 7, City staff and Mountain Line presented the Parking Demand Study for the site to City Council, which was approved.
- The DCC received CUP approval from the Planning & Zoning Commission on December 8.
- Mountain Line continues its effort to the NEPA work as required by the Federal Transit Authority.
- Staff has begun to prepare an IGA that will be negotiated with Mountain Line following the completion of the NEPA. Mountain Line hopes to have the IGA before the City Council in May 2022 for approval.
- Mountain Line plans to begin construction of its building in Phase I this Summer (2022).



## East Route 66 and El Paso Flagstaff Waterline Extension (CONSTRUCTION PHASE)

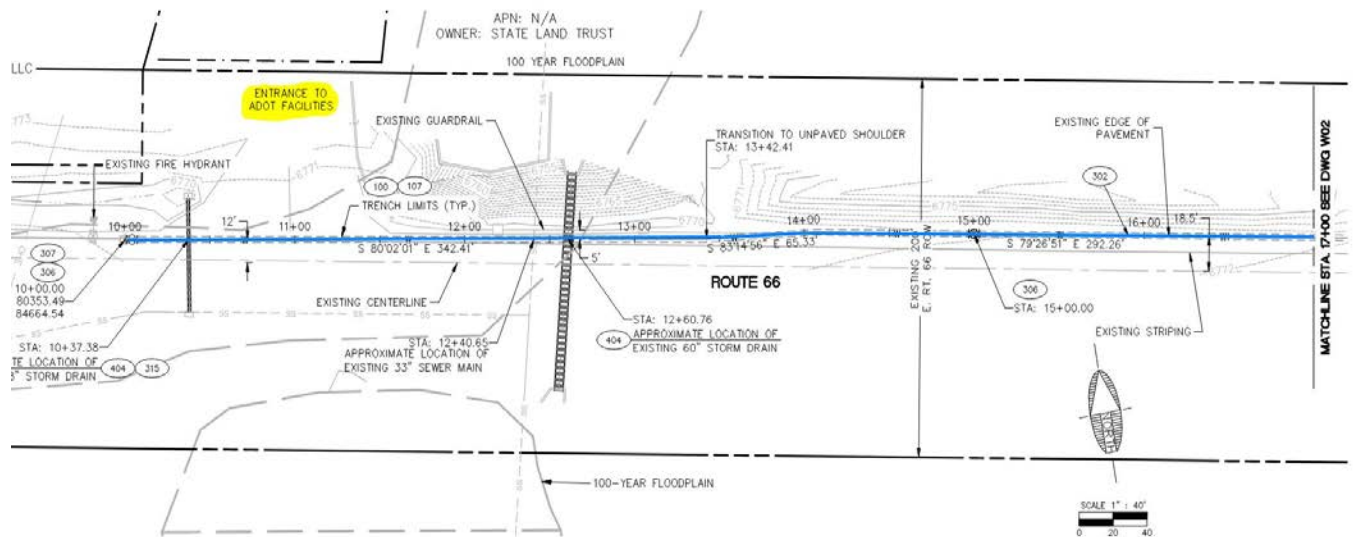
FUND: AGING INFRASTRUCTURE

**Description** – A utility improvements project that extends the 12” ductile iron waterline approximately 2,450 linear feet from approximately the intersection of Test Dr. and Rt. 66 to the intersection of El Paso Flagstaff Rd. The waterline extension continues north, up El Paso Flagstaff Road towards the Wildcat Hill Wastewater Treatment plant, with approximately 1,600 linear feet of new 8” ductile iron waterline. The project also calls for a repaving of El Paso Flagstaff Road for the extents of the waterline extension.

**Contractor** – Scholz Contracting, LLC

### Project Update:

- A Notice to Proceed has been issued for March 14<sup>th</sup>, 2022. Tentative project completion is for September 2022.



*Approved Civil Plans, blue line represents the starting point of the waterline extension that begins just west of the ADOT facilities driveway and Rt 66 intersection.*

## **Huntington Waterline Replacement** (CONSTRUCTION PHASE)

FUND: AGING INFRASTRUCTURE

**Description** - The Project consists of installing 3,000 LF of new 16" ductile iron waterline, and associated roadway improvements. Included in the project will be new water services, fire hydrants and air release valves. The existing waterline in this area is over 60 years old. This project is part of the City's ongoing aging water infrastructure replacement program.

**Contractor** - Sellers and Sons, Inc.

### **Project Update:**

- Crews continue to work through punch list items provided by Staff. A winter shutdown was issued for remaining asphalt work.



*Huntington Waterline Replacement, looking east at final grading and stabilization of the easement*

## **Phoenix Avenue Bridge and Waterline Replacement** (Construction PHASE)

FUND: STORMWATER & AGING INFRASTRUCTURE

**Description** - The project will replace the Rio de Flag box culvert (which runs beneath Phoenix Avenue and the Zani building, and functions as the Phoenix Ave bridge) with the appropriate conveyance structure and will upsize the current waterline to a 12" waterline in Phoenix Avenue from Mikes Pike to Beaver Street. Phoenix Avenue will be reprofiled and lowered to achieve a standard street section, roadway surface drainage issues will be addressed, edge improvements will be made as needed and the roadway will be repaved. The existing waterline in this area is over 114 years old. This project is part of the City's ongoing aging water infrastructure replacement program.

### **Project Update:**

- Phoenix Avenue re-opened Monday, February 21<sup>st</sup>.
- A Certificate of Substantial Completion has been issued. The Contractor and Staff will work through punch list items over the next couple of weeks.



*Phoenix Avenue*

## **Library Entrance** (DESIGN PHASE)

FUND: BBB - BEAUTIFICATION

**Description** – Project to bring Library Entrance into ADA compliance with new handicap ramp and new overall vision for the entrance. Public art will be incorporated into project and an artist is being brought onto the design team. Project includes upgrades to landscaping, handicap-accessible parking, parking lot, and hardscape.

### **Project Update:**

- The project team continues work on project phasing details and maintaining access to the Library throughout construction.
- The project is incorporating IT Fiber conduits to support the Broadband Master Plan and future connections.
- An ADA specialist third party reviewer has reviewed the plans for ADA compliance.
- The lighting permit application has been approved.
- The construction plans have been approved.
- The project will be advertised to the City job order contracting (JOC) contractors on February 25<sup>th</sup> with a targeted notice to proceed in early April.



*Library Entrance Project-Rendering of selected concept plan*

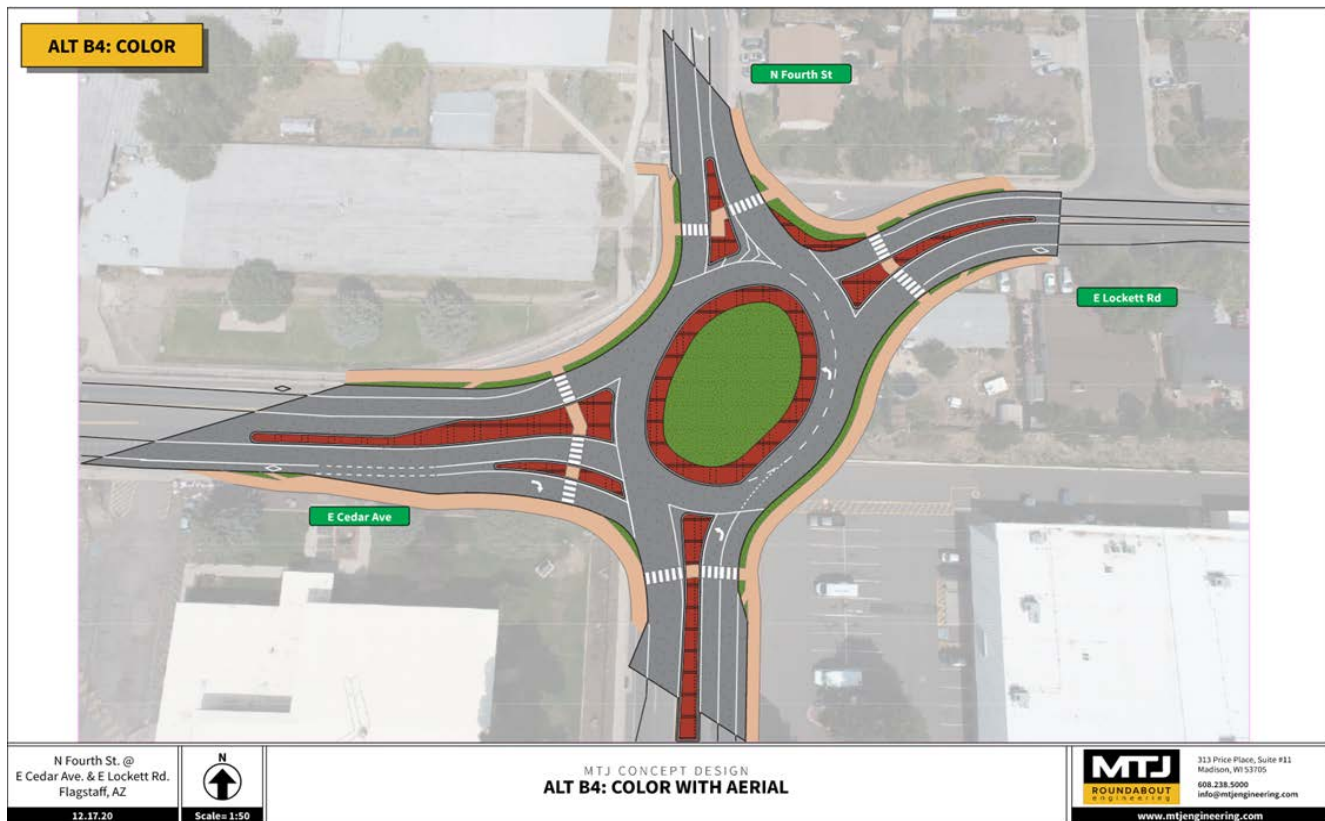
## **Lockett/Fourth Roundabout** (DESIGN PHASE)

FUND: HSIP GRANT

**Description** – Project consists of the design and construction of a new roundabout at the Lockett-Cedar-Fourth Street intersection. Project is funded by an HSIP Grant, with supplementary funding from City of Flagstaff. Project design and construction to be administered by ADOT. The new roundabout will improve safety and operations for vehicles, pedestrians and bicyclists in this busy intersection. Project design and construction to be administered by ADOT.

### **Project Update:**

- The project team has completed reviewing the 60% plan submittal.
- Project team is in discussions regarding allowable closures and maintenance of traffic options.
- The project team is working through the 60% design comment resolution process.
- The team is currently reviewing impacts to surrounding properties and working to mitigate impacts.
- An IGA amendment is being prepared to incorporate additional design scope and adding additional City involvement in project inspections during the construction phase.



*Selected Design Alternative- Lockett-Cedar-Fourth Intersection*