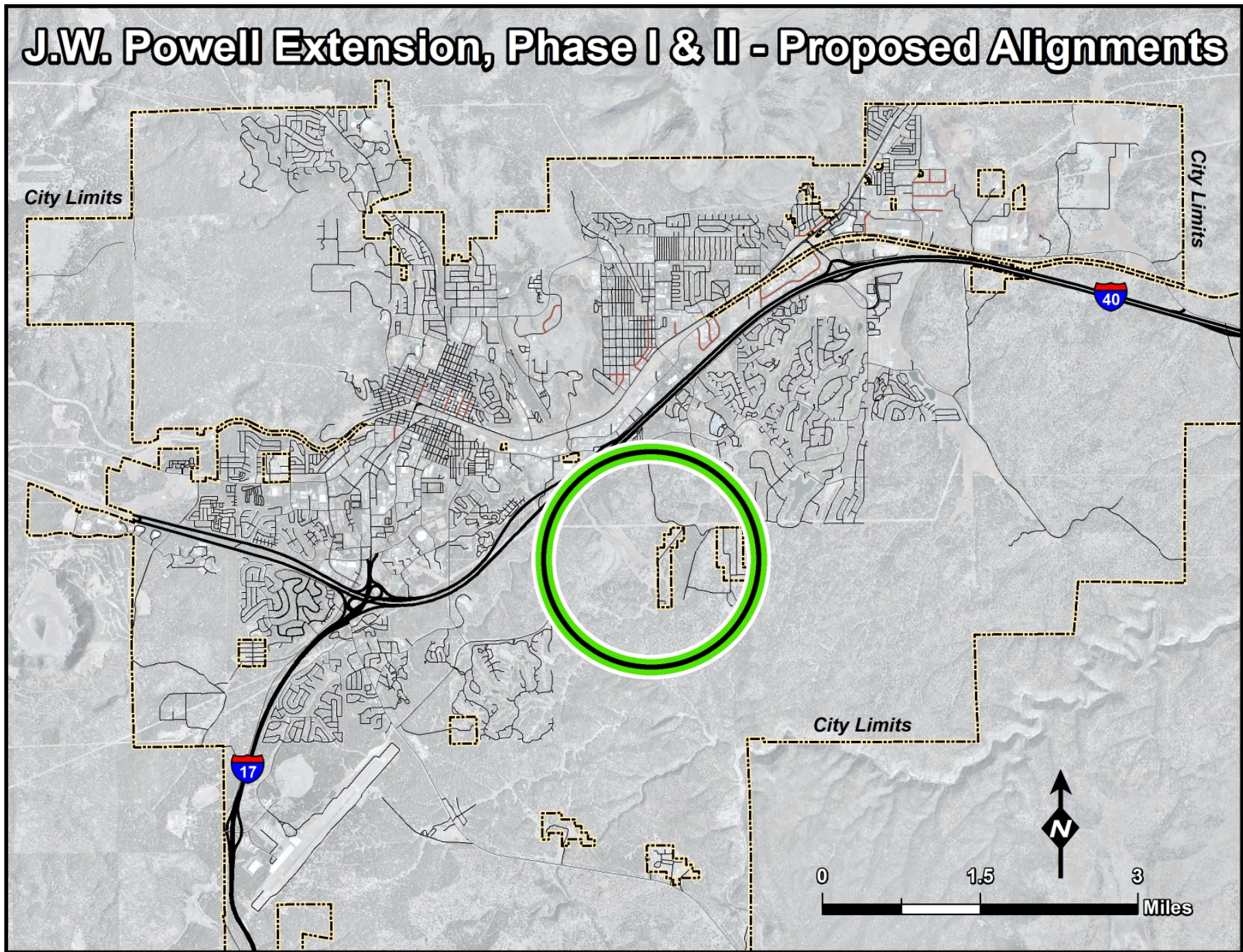


JWP Extension Proposed Alignments

7 July 2022



J.W. Powell Extension, Phase I & II - Proposed Alignments

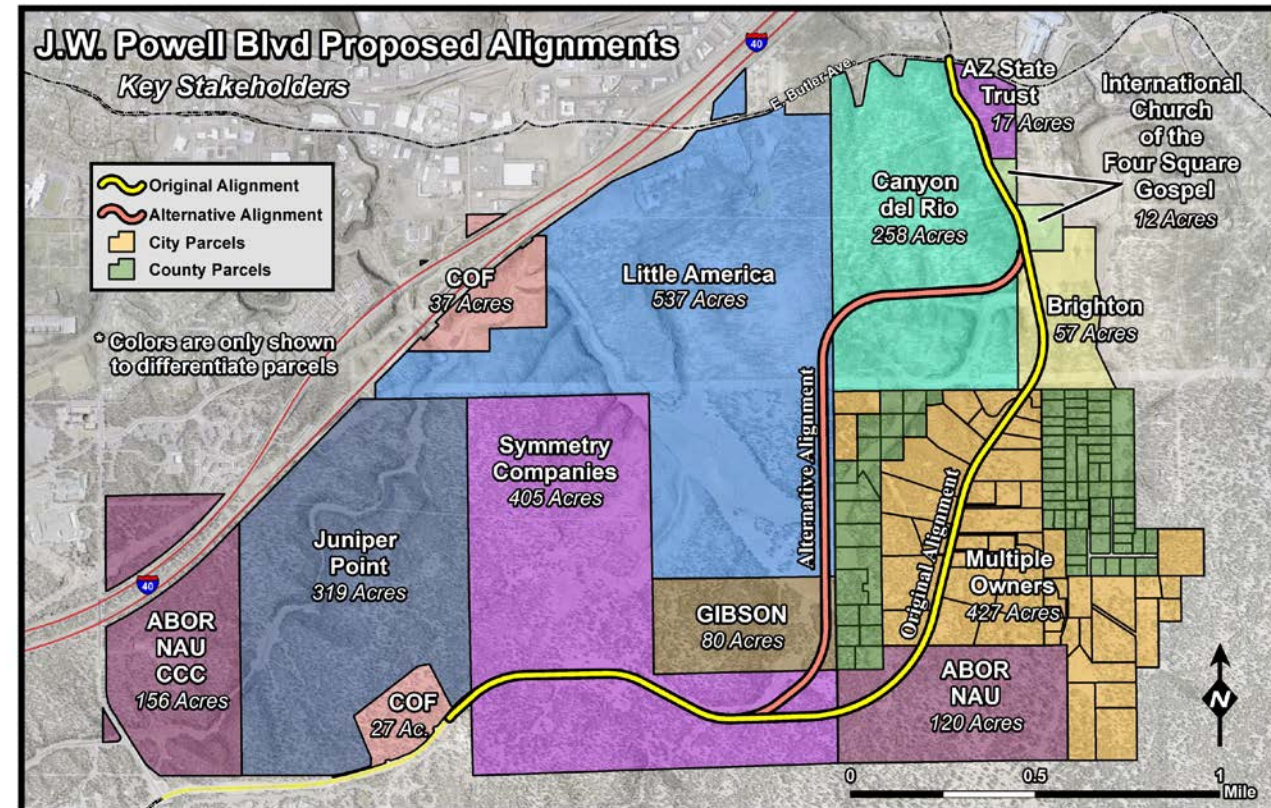




Agenda



- Grade-Separated Crossings
- JWP Extension Crossings
- Alignment(s) Crossings & Examples
- Wildlife Information
- Open Space
- Blue and Green Alignments
- Cost Comparison
- Minor Arterial Specifications
- Community Outreach
- Regional Map
- Cross-Section Examples





Grade-Separated Crossing Goals & Criteria



- **Wildlife Crossings**

- Maintain Natural Bottom
- Small Animals: Crossing Sizes Vary
- Large Animals: Wide, as Open as Possible and Strive for 12-Foot Height
- Avoid Combining with Pedestrian & Bicycle Crossings

- **People Crossings**

- Minimum 9-Foot Height for Bicycle and Pedestrian, 10-Foot Preferred
- Minimum Width 14 Feet + an Additional 1 Foot for every 10-Foot Increase in Length >50 Feet (*e.g., 100-Foot-Long Underpass would be 19 Feet Wide*)
- Provide Lighting
- Do Not Combine with Drainage Crossings unless Elevated from Channel

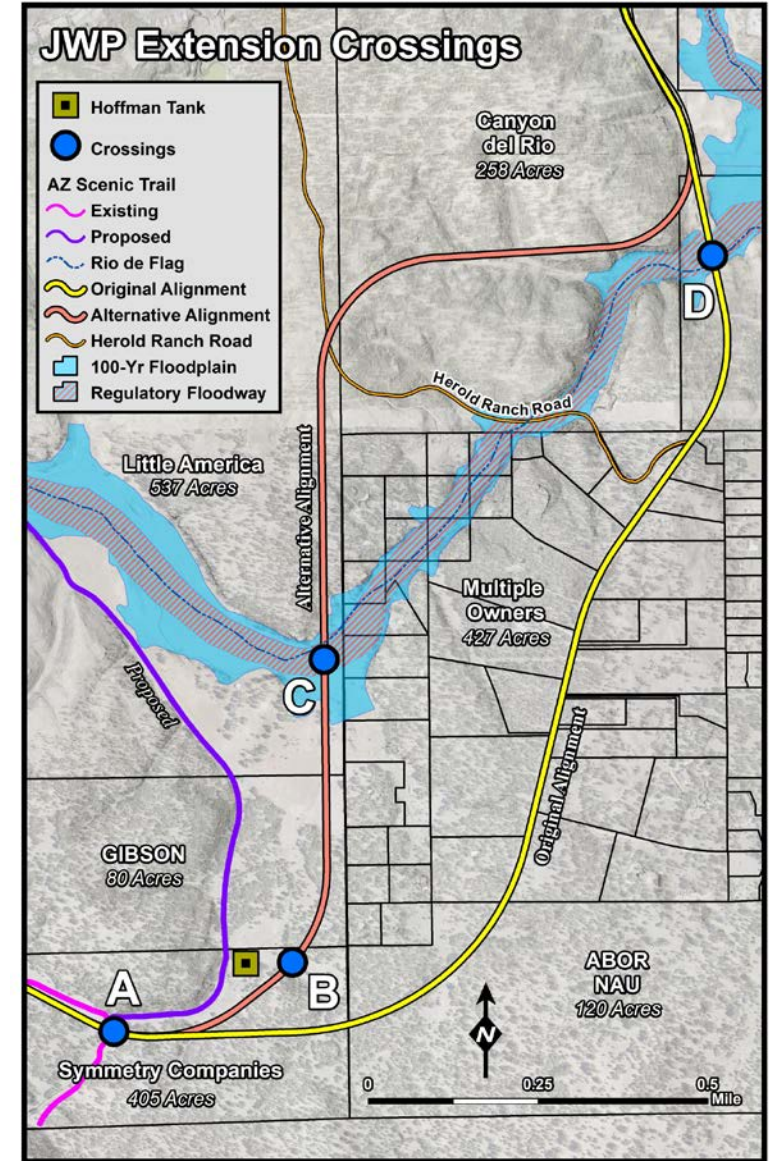


Grade-Separated Crossing Goals & Criteria

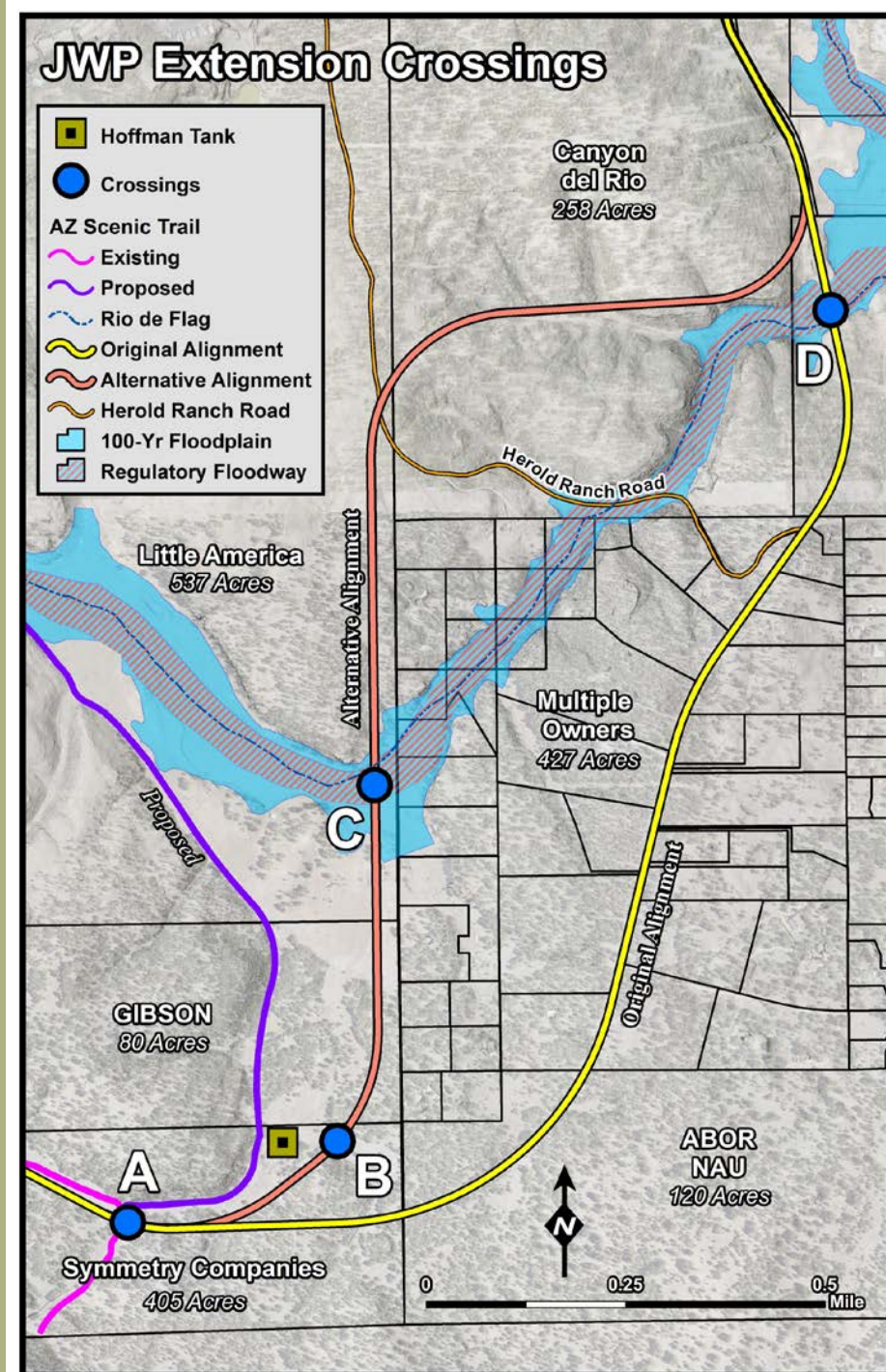


- **Drainage Crossings**

- Design for Passing the 100-Year Flow if FEMA Mapped Watercourse (Rio de Flag)
- Design for Passing the 50-Year Flow for other Drainage Crossings



Crossing Examples





Wildlife Info – AZGFD Partnership



- Collar Data Confirms Widespread Elk Movement
- Wildlife Seek Water Sources; even if Intermittent
- Maintaining Connectivity and Corridors is Imperative
- Access to Hoffman Tank and Toward Foxglenn Most Important
- Mitigation – Underpasses, Wildlife Fencing, Escape Routes
 - *Most Effective when Synergistically-used and not Piecemealed*
- Meetings and Communication Ongoing – Part of Design



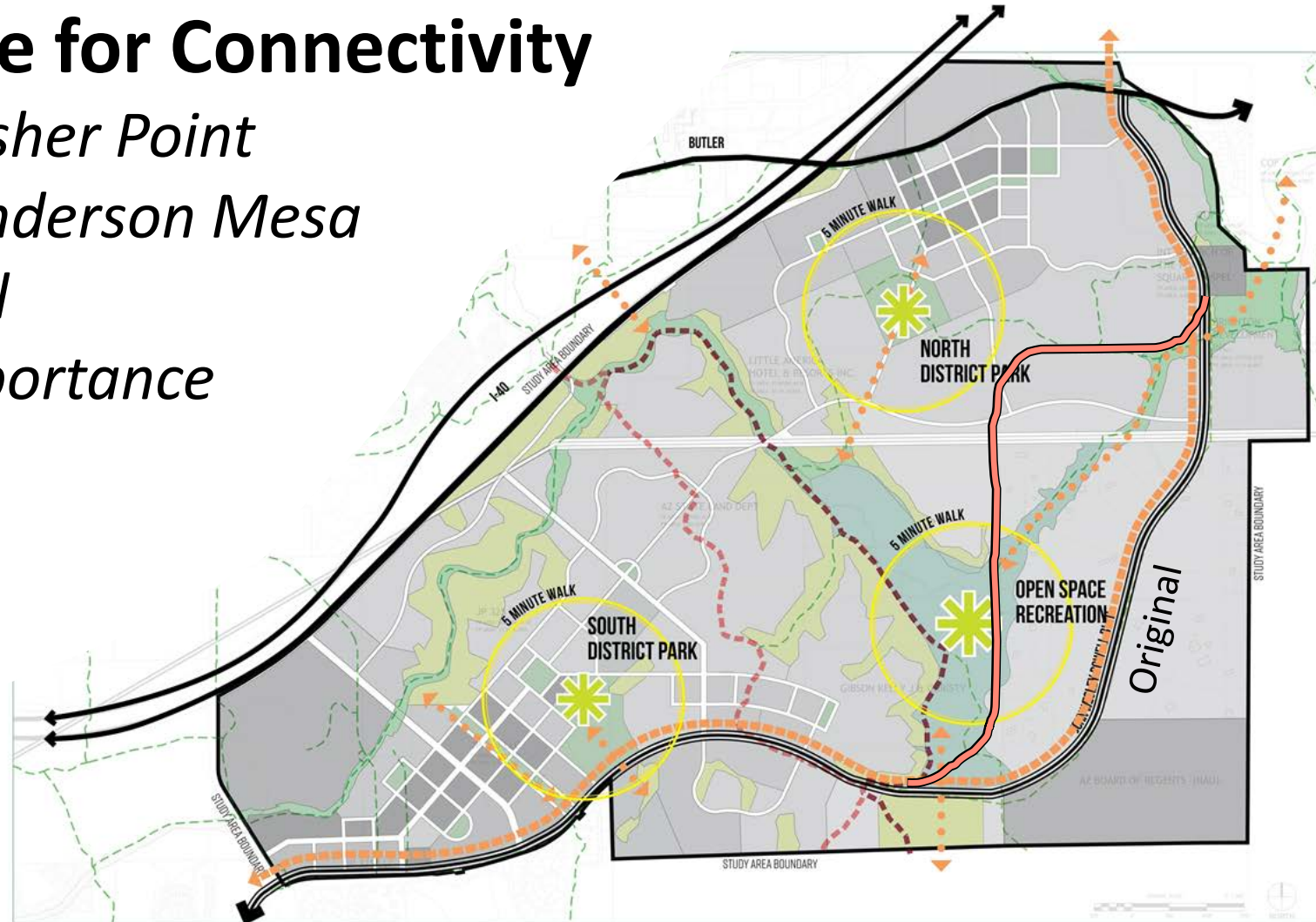


Open Space (OS)



- **Established as Top Priority by OS Commission (August 2021)**
- **Importance of this Space for Connectivity**
 - *Rio de Flag Floodplain to Fisher Point*
 - *Rio de Flag Floodplain to Anderson Mesa*
 - *Walnut Canyon to Ft. Tuthill*
 - *Wildlife and Recreation Importance*

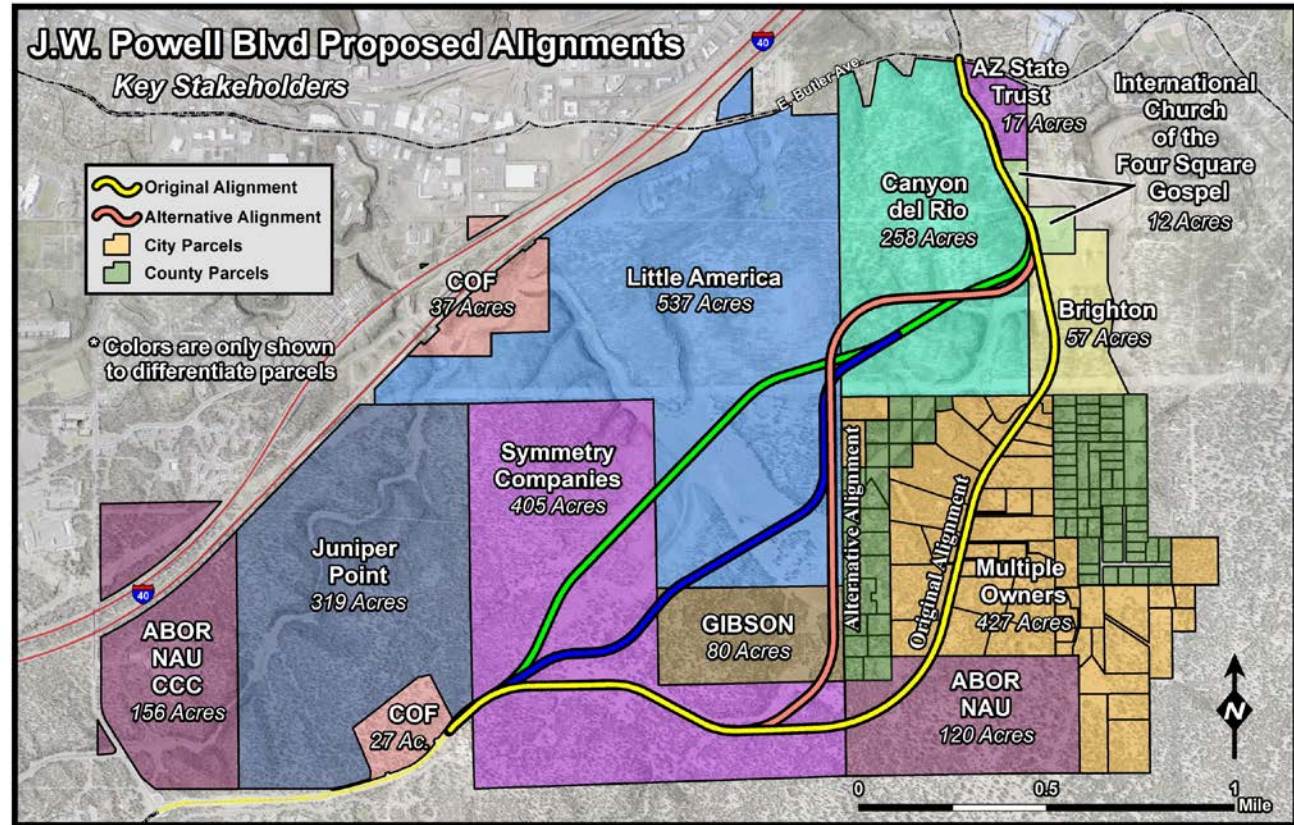
- ■ ■ PROPOSED AZT REROUTED ALIGNMENT (ON EXISTING TRAILS)
- ■ ■ EXISTING AZT ALIGNMENT (TO BE ABANDONED)
- — — EXISTING TRAILS
- — — JWP PRIMARY CONNECTIVITY
- ● ● PRIMARY CONNECTIVITY
- ~ ~ ~ APPROX. ALTERNATIVE ALIGNMENT





Blue & Green Alignments

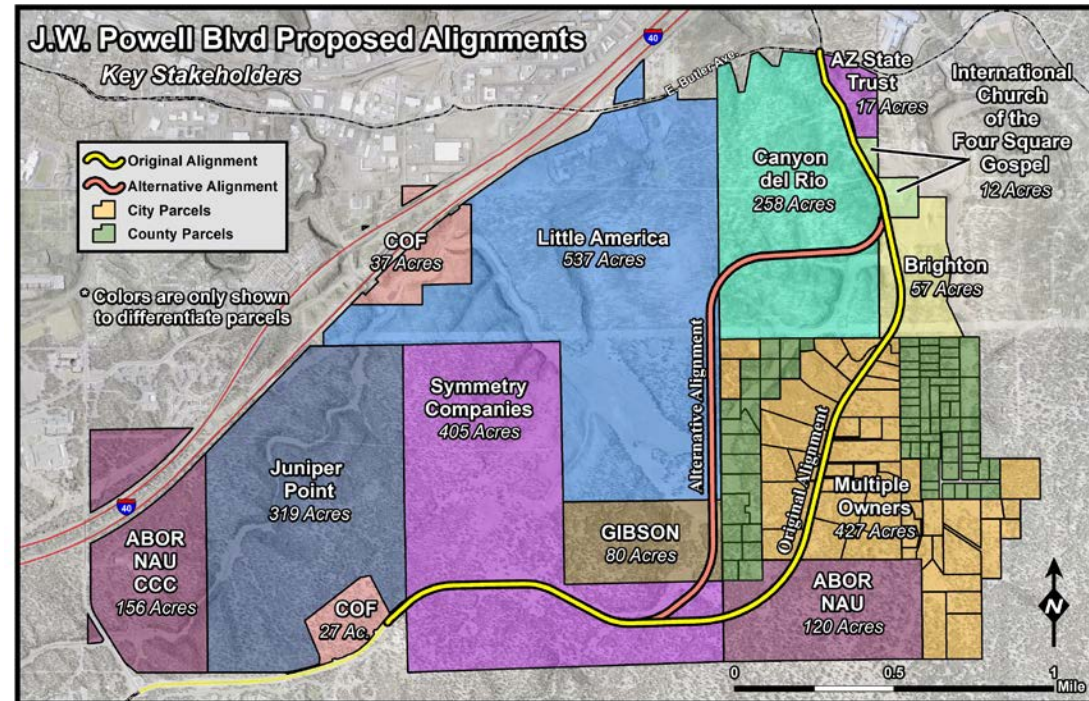
- Blue and Green Alignments were Initial Linework
 - *Lines Conceptualized by Design Team*
- Six Months of Discussions with LP Cultivated the Salmon Line
- If Salmon Line Shifts West, the Partnership with LP Owners Dissolves





Cost Comparison

- Costs are Fairly Similar with Either Alignment
 - *Construction Estimates have not been Calculated by Design Team*
- Per Prop 419 Funding – Funding is 40% Public Contribution





Minor Arterial Engineering Criteria

- *Minor arterials provide capacity and continuity for travel between different districts of the region. Adjacent land uses include residential and commercial areas, open space, public lands, industrial sites and institutional sites. The activity center for a district will often be located along a minor arterial or at the intersection of a minor arterial with another minor arterial or a major collector.*
- **Design Speed – 40 mph**
- **Maximum Grade – 6%**
- **Median Required** (*narrowed where we need left turn lanes*)
- **Two to Four Lanes – Depending on traffic volumes**
- **Parkway, Sidewalk & Bike Lanes Included**
- **FUTS Trail to Replace Sidewalk Along One Side of JWP**



Community Outreach



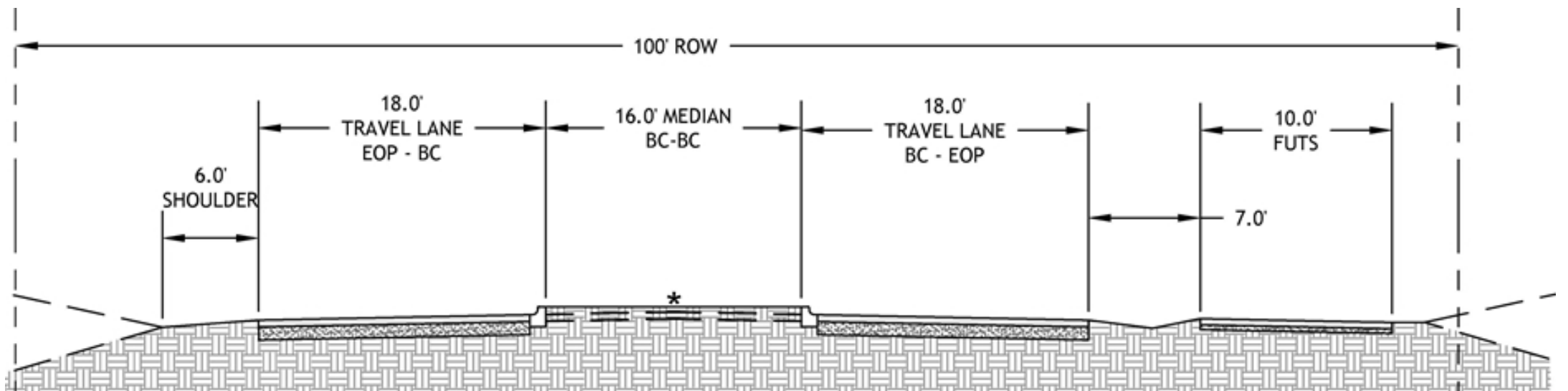
- **Outreach to SP Property Owners**
- **Outreach to LP Property Owners**
- **Two Local Non-Profits**
- **Council Meetings**
- **Originally Planned to Present to City Council in Fall 2022**
 - **Expedited by Development (Underway) at Canyon Del Rio**
- **Future Canyon Del Rio Planning Changes with Salmon Line**



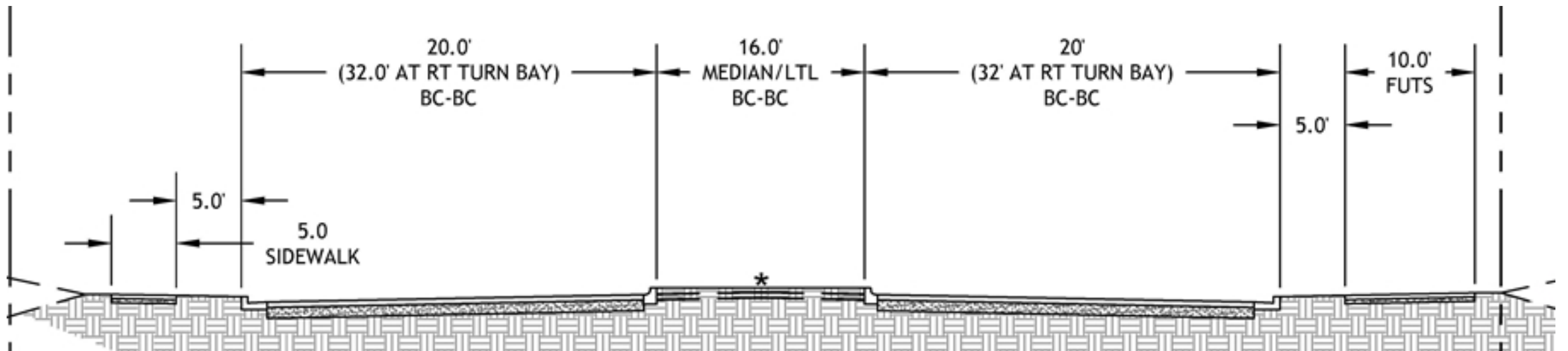
Community Outreach

- **City Council Meetings** (*Oct 2020, Oct 2021, Jun 2022, Jul 2022*)
- **Friends of the Rio de Flag** (*December 2020*)
- **Small-Parcel (SP) Property Owner Open House** (*Jan 2021*)
- **1-on-1 Meetings with Original Alignment Impacted SP**
(Feb to March 2021)
- **Friends of Flagstaff's Future** (*August 2021*)
- **Individual Meetings with Large-Parcel (LP) Property Owners**
(*Fall 2021/Spring 2022*)
- **Project Update to SP & LP Owners and Website** (*May & Jun 2022*)

Existing JWP Blvd – *Between Lake Mary Rd and Pine Canyon*



Existing JWP Blvd – *Between Pine Canyon and Terminus*





J.W. Powell Blvd Proposed Alignments



COMMENTS & QUESTIONS

David Pedersen
Project Manager
Capital Improvements
dpedersen@flagstaffaz.gov
Office :: 928.213.2677



www.flagstaff.az.gov/jwpspecificplan

