

Schultz Creek Sediment & Detention Basins

August 23, 2022





Grant Award Agreement

- The Pipeline Fire burned over 1000 acres of the Schultz Creek watershed (26,532 Acres in total area)
- The project will detain over 50 acre-feet of water and sediment, thereby reducing life and safety threats as well as the risk of post-wildfire flooding
- Project is located on a 20-acre parcel of City-owned land at the northeast corner of E. Mt. Elden Lookout Rd and Schultz Pass Rd.
- Staff presented to the Historic Preservation, Open Space and Water Commission



Grant Award Agreement

- Natural Resource Conservation Service (NRCS) responded quickly to do an initial site visit with city staff on June 29, 2022, for an exigency grant
- Emergency Watershed Protection, Damage Survey Report was submitted on July 8, 2022, and subsequently a grant application
- On July 27, 2022, NRCS notified staff that the City of Flagstaff would receive an Emergency Watershed Protection grant in the amount of \$2,408,180.75
- Outstanding Partnerships – Internal and External







Construction Contract Award

- Five construction firms were contacted for cost estimates
 - Three construction firms participated and provided a cost estimate
- Fann Contracting was selected on price and qualifications
- A Notice To Proceed (NTP) was given to Fann on 8/19/2022
 - Complete by October 26, 2022

**City of Flagstaff
Schultz Creek Sediment and
Flood Detention Basins Project**

August 2022 October 2022

CONSTRUCTION COST: \$2,274,445

Design Consultant: **Shepard Wesnitzer, Inc.**

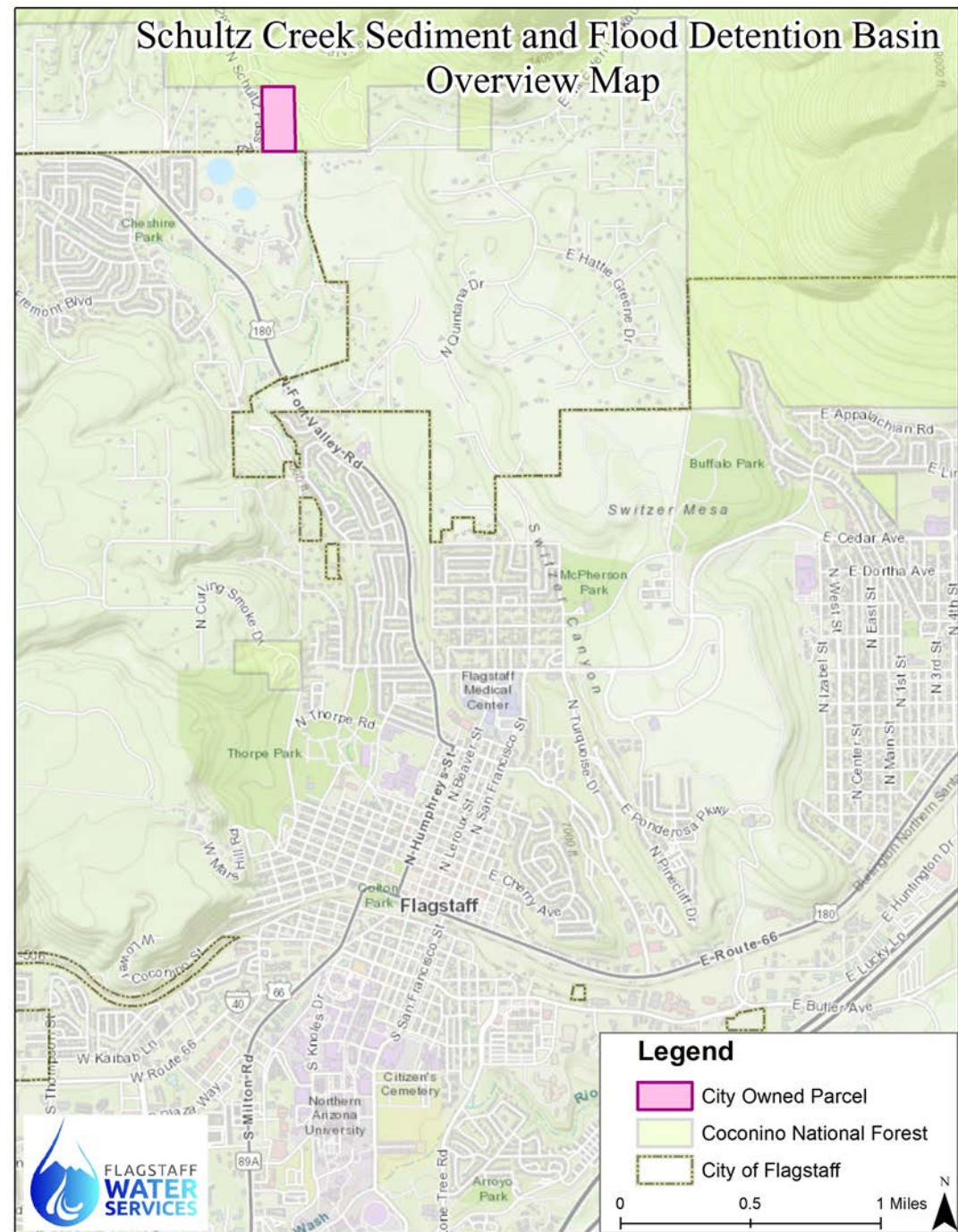
General Contractor: **Fann Contracting, Inc. (928) 778-0170**

City of Flagstaff Project Manager: **Adam Miele (928) 213-2108**

This project is funded in part by:
**U.S. Department of Agriculture, Natural Resources
Conservation Service and
City of Flagstaff Stormwater Funds**

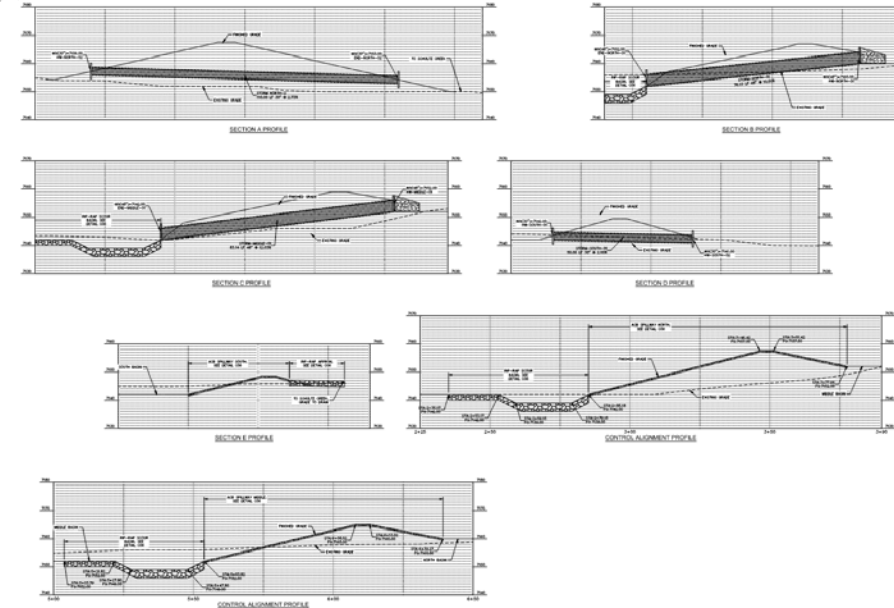
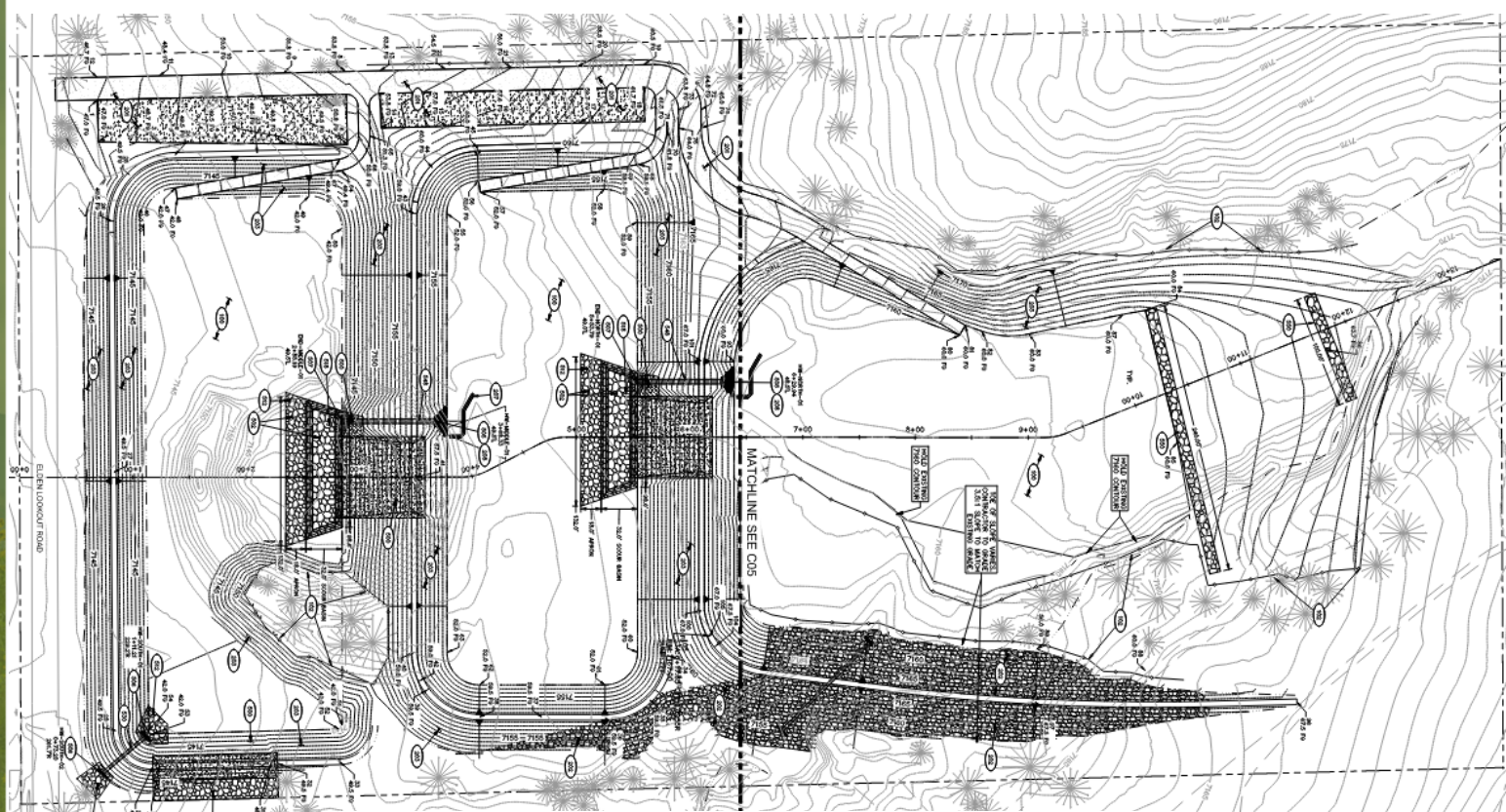
Long-Term Mitigations

Schultz Creek Sediment and Flood Mitigation Detention Basins



Detention Basins

- 20-acre City owned Parcel
- Does not include trail access, trailhead parking, historic interpretation, etc. These features will be added as design progresses.



Project Highlights

Shephard Westnizer (SWI) provided designs and engineering support

The Stormwater Fund will provide the 25% match

Project Management: Public Works

Technical construction support: SWI, Stormwater, Public Works, Water Services Engineering

Grant support: Grants and Contract Management



General Questions?

