



CITY OF FLAGSTAFF

PROSE

PARKS, RECREATION,
OPEN SPACE & EVENTS



PUBLIC WORKS

CITY OF FLAGSTAFF

Snow Operations Readiness Report

2022-2023 Season



Presentation Objectives



Winter Storm Readiness Report.

- ❖ Forecasting and Storm Preparations
- ❖ Streets - Winter Operations
- ❖ PROSE – Winter Operations
- ❖ Post Storm Operations
- ❖ Community Expectations and Parking Ordinance



Storm Preparations



Winter Storm Event

- ❖ NWS and all-weather briefings
- ❖ On-call supervisors and weather watch
- ❖ Weather and Road Conditions
- ❖ Resource deployment
- ❖ Safety, Timing and Temperature
- ❖ Agency communication and reporting
- ❖ Snow operations are 24/7 with 12-hour shifts

Streets Snowplow Fleet

- ❖ 20- 10-Wheel Snowplows
- ❖ 4- 6-Wheel Plow Trucks
- ❖ 10- Motor Graders
- ❖ 5- Front-end Loaders
- ❖ 2- Bobcat Tool- Cats w/snow blower.
- ❖ 1- Truck Mounted Snow Thrower





Streets Personnel Preparations

Snow operations are 24/7 with 12-hour shifts

- ❖ 4 - Full Time Operations Supervisors
- ❖ 19 - Full Time Streets Equipment Operators
- ❖ 4-6 - CDL operators from other sections
- ❖ 6-12 - On-Call community CDL operators
- ❖ 1 - Administrative Specialist

**Minimum shift staffing and existing vacancies*



Streets- Snow Operations

Priority Routes – Open and Passable at all times

- ❖ Main Routes and Arterials
- ❖ Major Hills
- ❖ Downtown Core
- ❖ NAIPTA Bus Routes

Secondary Priority Routes –

- ❖ Residential Streets and Cul-de-sacs

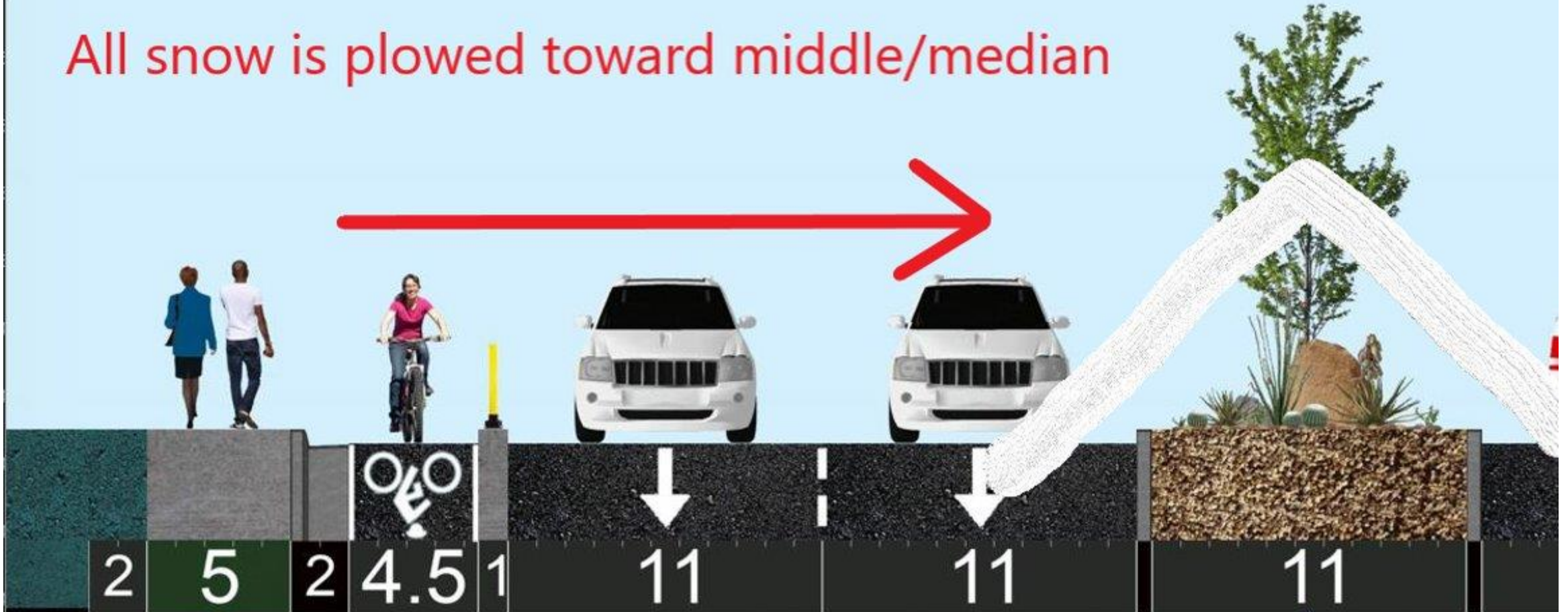
**Plowing and ice control for the duration of each storm event.*



Butler Ave Expected Snow Impacts



All snow is plowed toward middle/median





Parks Section - Readiness

- ❖ Same forecasting and snow season readiness as our partners in Streets with season predictions and resource analytics
- ❖ All staffing and fleet same as previous fiscal years
 - ❖ 15 equipment operators, 10 hand shovelers
 - ❖ Recruiting vacancies are a struggle with 5 FTE and 6 temporary
- ❖ Added FUTS segments to routes, adjustments
- ❖ Courtesy berm relocation program review and implementation



Parks Fleet and Equipment

- 10 – Plows on Trucks
- 1 – Toolcat
- 1 – Cinder spreader
- 6 – Tractors and Backhoes
- 4 – Snow throwers
- **Many shovels!**



Snow Operations - Parks

- Operation is 24/7 with 12-hour shifts when applicable
 - Shifts typically 4 AM, 6 AM and 9 AM start times
 - 2 AM hauling time for downtown/Heritage Square
- Priorities of routes, in order – over 300 assignments
 - Parking lots of City-owned buildings – 63 parking lots
 - City-owned sidewalks and FUTS system (concrete/asphalt sections)
 - Heritage Square
 - Dedicated City Alleys
 - Courtesy Berm Service, when applicable
 - Entrances to FUTS – non aggregate only
 - Parking lots at park locations
 - Stairways, walkways, skate tracks and BMX track in City parks

Expectations:

- When snow accumulates, Parks begins operation on parking lots, sidewalks, FUTS sections, alleys
- Operate on shifts with safety and efficiency in-mind, utilize an internally created snow app
- Once Streets has plowed residential roads, the courtesy berm program begins for approved citizens

Snow Operations for our Parks Section



Snow Operations - Parks



Parks Snow Operations Dashboard - 2021 - 2022 Season



Percent Completed



Last update: a few seconds ago

Completed



Last update: a few seconds ago

Outstanding Assignments



Last update: a few seconds ago

In Progress



Last update: a few seconds ago

Unassigned



Last update: a few seconds ago

Declined



Last update: a few seconds ago

Paused



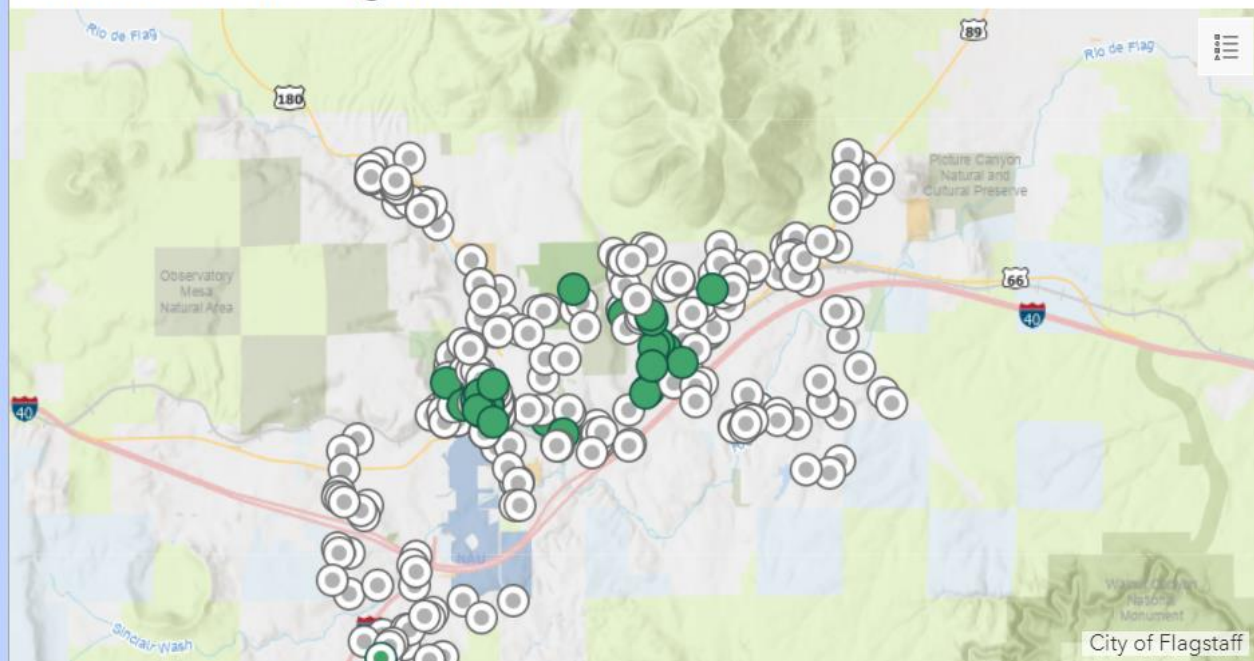
Last update: a few seconds ago

Canceled



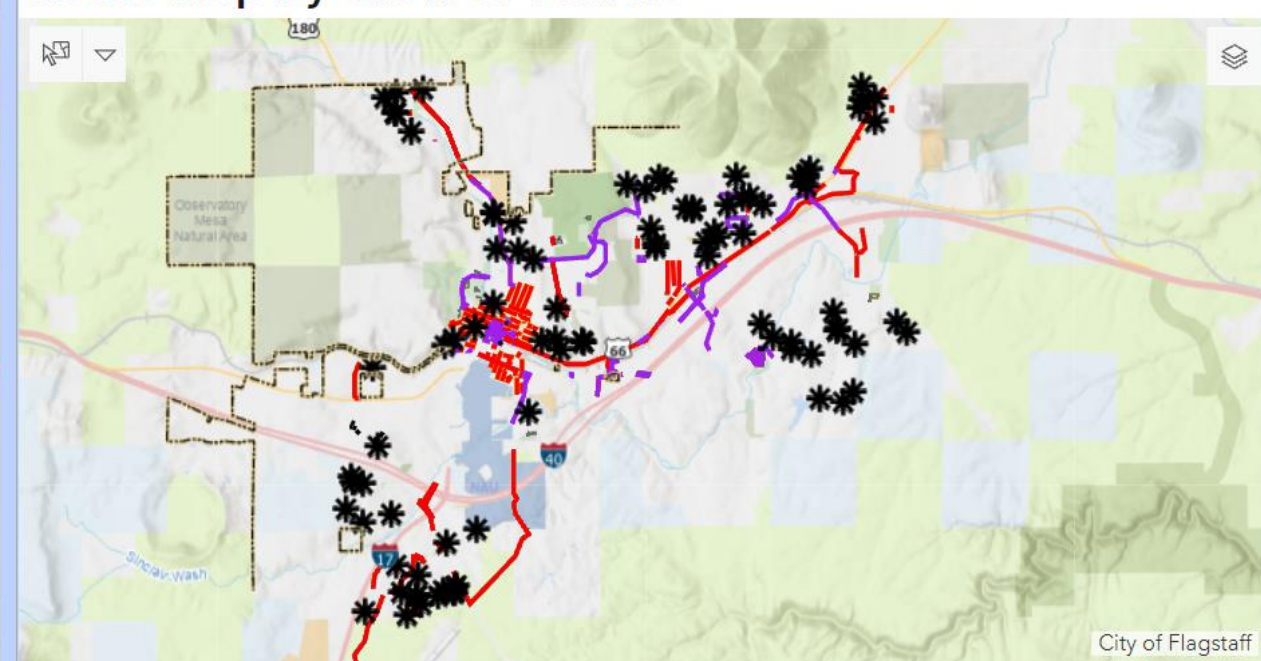
Last update: a few seconds ago

Current Storm Assignments



City of Flagstaff

Route Map by Crew or Vehicle



City of Flagstaff



Post Storm Operations



Community-wide

- ❖ Periodic hauling operations –
Downtown Parking
- ❖ Snow removal – Separated Bike
Lane Pilot
- ❖ Cul-de-sac stacking and removal
- ❖ Intersection clean up and push
back
- ❖ Signage and damage repairs
- ❖ Prolonged Ice control and
trouble spots
- ❖ Ice Cinder sweeping





Public Operations Assistance

- ❖ Limit travel as much as possible
- ❖ Provide safe distances and stay alert
- ❖ Winter Parking Ordinance
 - ❖ **NO Parking on City Streets November 1st to April 1st**
 - ❖ Citywide – Midnight to 7:00 AM
 - ❖ N. Downtown Area* – 3:00 AM to 7:00 AM
 - ❖ Museum Flood mitigation areas
- ❖ City Web site for more information



Questions?

