



ENGINEERING DIVISION
Capital Improvements Section

Monthly Capital Projects Report
April 2022

Honorable Mayor, Vice Mayor and Council,

The April report was completed by our Project Managers on April 1st and includes project updates for the month of March.

The attached map is a comprehensive view of all active capital improvements projects in our community that are assigned to the Capital Improvements Section of the Engineering Division, inclusive of projects that are in planning, design, and construction phases.

We have tried to reduce the extent of information provided and focused on only those projects that had substantive progress from previous months or have key milestones to share.

If you would like to receive more information on a specific project, please reach out and we'd be glad to share more detailed information.

Active Transportation Master Plan

On September 13, 2021, the City released the draft Active Transportation Master Plan (ATMP) for a 60-day public comment period. The ATMP will serve as a guide to enhancing walking and biking in Flagstaff. The draft document includes detailed information regarding pedestrian and bicycle accommodation and establishes a series of goals, policies, and strategies to support walking and biking.

- The 60-day review period and the community survey were extended through the winter to allow for additional commission presentations and public comment. The community survey for the ATMP recently closed, with 250 surveys completed. Staff is in the process of compiling results.
- Staff continues to refine the 20-year program of pedestrian and bicycle projects that will be funded with the pedestrian/bicycle portion of the transportation sales tax and Mountain Line's first/last mile grant. An interactive map of planned sidewalks, bikeway, FUTS trails, enhanced crossings, and grade-separated crossings is available at [this link](#).
- The ATMP will be accompanied by a minor amendment to the Regional Plan to incorporate infrastructure maps from the ATMP and some of its general language. A draft of the minor Regional Plan amendment [can be viewed here](#). The plan amendment was recently reviewed internally as part of the IDS process; substantive comments regarding the amendment will be available soon and will be incorporated into the modification.
- Staff is working with Comprehensive Planning to finalize the review and adoption schedule for the plan.
- The [draft ATMP can be downloaded here](#). For more information, [go to the ATMP webpage](#).

City of Flagstaff



DRAFT Active Transportation Master Plan

Woody Way

A citizen petition was submitted to Council for discussion on September 23, 2021, to make Woody Way a one-way street westbound, while still allowing for emergency vehicular access. Staff gave a presentation to Council explaining background of the Woody Way Gate and touched on some of the data that has been, and will be, collected. Since this issue has already been in the hands of the Transportation Commission, Council decided to not allow the FAIR item to move forward and to let the Commission make a recommendation to Council on a decision for the connector roadway.

Project Update:

- Additional traffic calming measures will be installed by Public Works and include raised cross walks where Woody Way intersects Mission Timber and Ax Handle Way, and where Highland Mesa Rd intersects Ax Handle Way. These locations will also have stop bars and double center lines striped. The new striping will be completed in the Spring of 2022 once the weather is warmer. The raised cross walks will be designed and constructed concurrently with the permanent calming measures on University Avenue. Additional traffic calming measures also include installing no parking signs on the north side of Woody Way. Work orders for the striping and no parking sign have already been submitted.



Striping Example: WB Approach of Highland Mesa Rd & Ax Handle Way

Boulder Pointe – University Avenue Traffic Calming

- Through the removal of the Woody Way gate that once separated the neighborhoods of Presidio and Boulder Pointe, staff discovered that speeds on University are high enough to warrant traffic calming measures. We have presented to the Transportation Commission concepts for traffic calming and invited the public and HOA's for input. The outcome was to install temporary center island medians and a bump out using candlesticks, along with a radar feedback sign at each end of the straightaway on University. Public Works installed the temp traffic control along University in June 2021. Traffic counts have been collected to see if the temp traffic calming measure have worked and the 85th percentile speed has decreased by 2 mph in both locations on University.

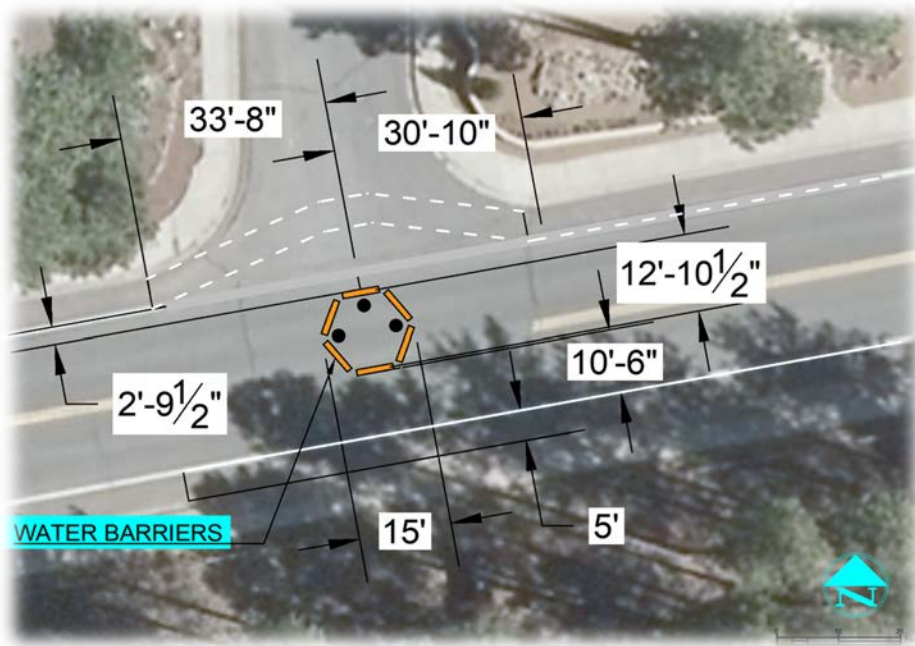


Radar Feed Back Sign WB University



Candle Sticks on University

- Transportation Commission reviewed modifications to the University at Tombaugh temporary traffic calming setup at their December 1 meeting. The commission heard public comment and recommended staff move forward with a new design utilizing curb extensions and a neighborhood mini circle. The traffic circle has been drafted in AutoCAD and has been verified to be able to support the turning radius of the largest vehicles using the circle through vehicle tracking. The old traffic calming measures were removed on Thursday February 10, 2022, and the temporary traffic circle was installed on Friday February 11, 2022. This setup will be evaluated with a traffic study once the weather permits in order to determine how it impacts traveling speeds.



Temporary Traffic Circle Striping/Implementation Plan



Eastbound View of the Temporary Traffic Circle

Spruce Wash – Cedar to Dortha and Dortha Inlet (Design Phase)

FUND: STORMWATER

Description - Design consists of improvements to the Spruce Wash Channel from Cedar Avenue to south of Dortha Avenue. This work is in response to the damage that occurred during the 2021 monsoon flooding from the Museum Fire burn scar.

- Engineering design was substantially completed. The city and the Contractor continue value engineering and field changes to reduce cost and increase construction efficiency.
- Construction began March 21. The Contractor has been working on removals, utility locating, and franchise utility relocations over the past two weeks. Additional franchise utility locations have been discovered and are being integrated into the project schedule.
- Staff provided a monthly update to Council on March 29, which included the feasibility study and modeling, project updates, the siren system, and communications.
- Museum Flood Engineering and Feasibility team meetings continue every Monday and City staff continues to meet monthly with County Supervisor Jeronimo Vasquez.
- While there are utility and property related challenges to this project, construction of these improvements will occur prior to the 2022 monsoon season.



Spruce Wash north of Dortha Avenue



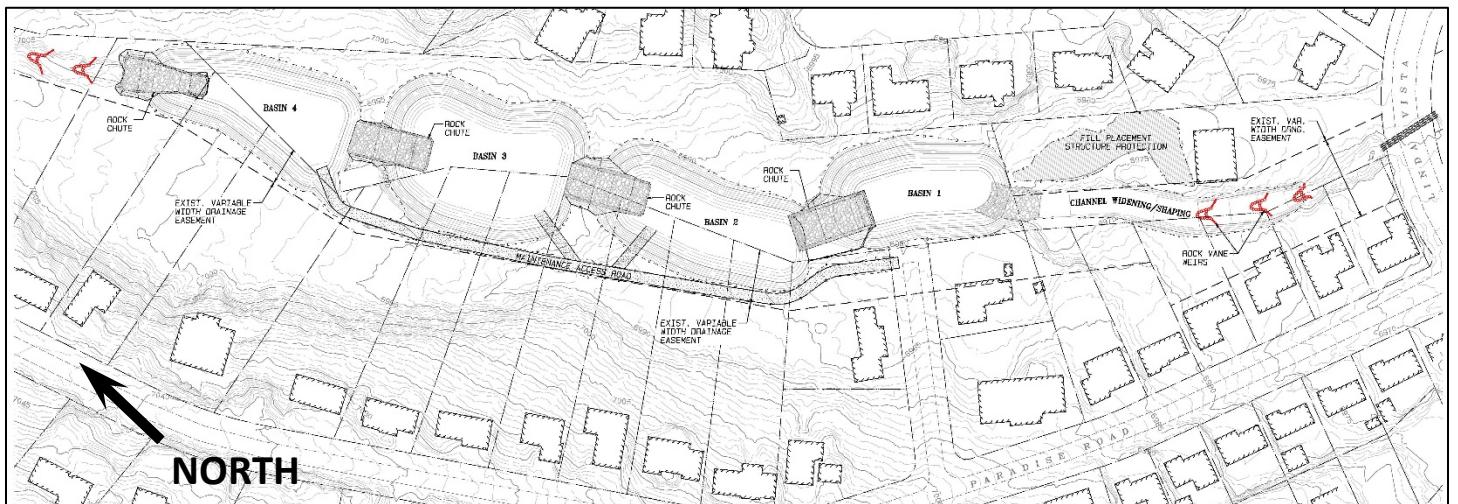
Spruce Wash – looking south at Dortha Avenue

Spruce Wash – Park Basins (Design Phase)

FUND: NRCS GRANT/STORMWATER

Description – This project adds four sediment basins and five rock vein weirs below the recently-completed Spruce Wash Channel Widening Project (northern end of Paradise Road) and upstream of Linda Vista Drive. These basins will be part of a sediment deposition system for flood waters from the Museum Fire burn shed before conveyance to the Sunnyside neighborhood.

- Project design has been placed on hold until the upstream Mount Elden Estates Project has been completed by the County.
- Natural Channel Design (NCD) will be completing the project design. Currently plans are at 30-percent.
- City will acquire property rights to support the County Flood Control District (CFCD) project management and is working on property classifications and evaluating drainage easements within the project extent.
- National Resource Conservation Services (NRCS) grant is not able to fund property acquisition so City Stormwater funding will be used for this purpose.
- City will keep the park designation for the city parcel and is considering development of a trailhead for Forest Service access that respects the Beal Wagon Road historical alignment in the area.
- CFCD received funding of \$3.5M for work out of the city and includes the Park Basins.
- Time for construction is estimated at 220 days.
- Property acquisition has begun, beginning with discussions with property owners regarding design of the basins.



Project Extent from 30% Plans. Paradise Road is on the Bottom; Linda Vista Drive is on the Right.

La Plaza Vieja Traffic Calming (CONSTRUCTION PHASE)

FUND: TRANSPORTATION TAX (SAFETY) & HOUSING [CDBG] ALLOCATION

Description – The project is assisting the neighborhood by improving pedestrian safety of crosswalks, sidewalks, bike lanes and storm drainage at the Kingman Street and Florence Street/Malpais Lane intersections along Clay Avenue.

Contractor – Kinney Construction Services

Project Update:

- The week of 3/14 the final roadway paving occurred.
- Final pavement markings were installed on 3/23/2022.
- Substantial Completion was issued on 3/23/2022.
- Minor punch list items including survey monuments and as-builts remain.
- All traffic control devices and closures were removed on 3/23/2022 and pedestrian, bike, and vehicular traffic resumed through the project site.



Kingman/Clay intersection looking east at final pavement markings.

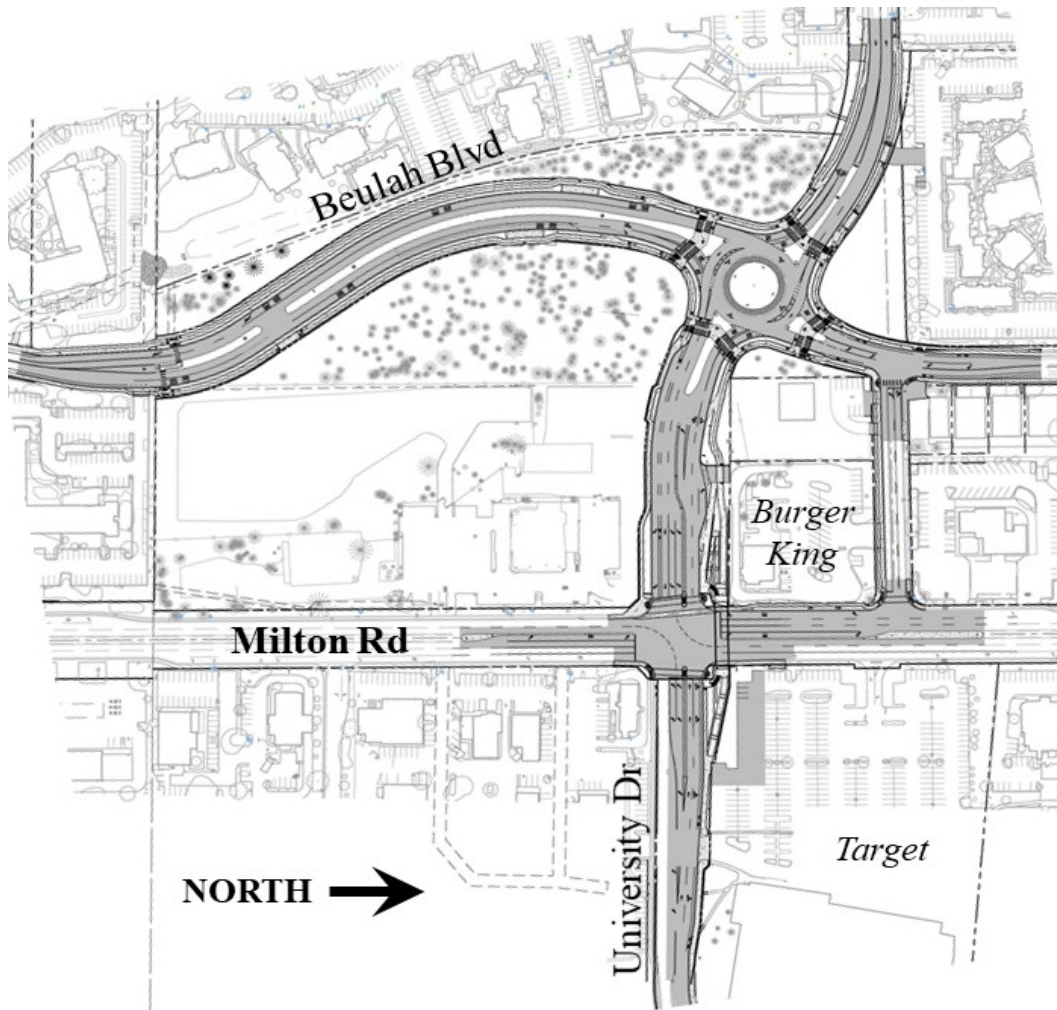
Beulah Boulevard Extension/University Drive Realignment (DESIGN PHASE)

FUND: TRANSPORTATION TAX (STREETS)

Description – This project extends the northern terminus of Beulah Boulevard to connect with University Drive. Furthermore, University Avenue (west of Milton) will be realigned to match up with University Drive (east of Milton). A new roundabout will be constructed where Beulah Boulevard and University Drive will intersect.

Project Update:

- Shephard-Wesnitzer, Inc. (SWI) is the design engineer.
- Eagle Mountain Construction (EMC) is the CMAR contractor.
- 90% design plan comments from project stakeholders should be integrated by the first week of April.
- Design work will continue to Final 1s (95%) and Final 2s (100%), which are the construction-ready plans. Final 2s should be completed by late May.
- Construction will take place in two phases over two construction seasons: starting in July 2022 concluding in July 2024.



Extent map of new Beulah and University Roadway Project – taken from 90% plans.

Coconino Estates Improvements Phase II (CONSTRUCTION PHASE)

FUND: ROAD REPAIR & STREET SAFETY & AGING WATER AND SEWER INFRASTRUCTURE REPLACEMENT PROGRAMS

Description - This is a utility and roadway improvements project located on several streets in the Coconino Estates neighborhood as seen in the map below. Improvements on the streets generally consist of replacing all existing utility and roadway infrastructure. The utility improvements include replacing the existing water and sewer mains, water and sewer services, fire hydrants, and manholes. The roadway improvements include replacing the existing asphalt roadway, replacing rolled curb with vertical curb, constructing driveway ramps at driveway entrances, and replacing select sidewalk only where it currently exists on Crescent Drive. Sidewalk will NOT be installed where it does not currently exist. For additional information visit the Project website at www.coconinoestates.com

Contractor - Standard Construction Company

Project Update:

Crescent Drive and Meade Lane

- Sewer installations and temporary roadway trench patches are complete.
- Water main installations and temporarily patching roadway water trenches are complete, with testing continuing and public and private connections remaining.
- Water main and service installations and temporary roadway trench patches are complete on Meade, with testing continuing and public and private connections remaining.
- Crescent is closed to non-residential traffic from Meade to Talkington.
- FUSD was coordinated with to move their bus route onto Meade.

Navajo Drive and Elizabeth Road

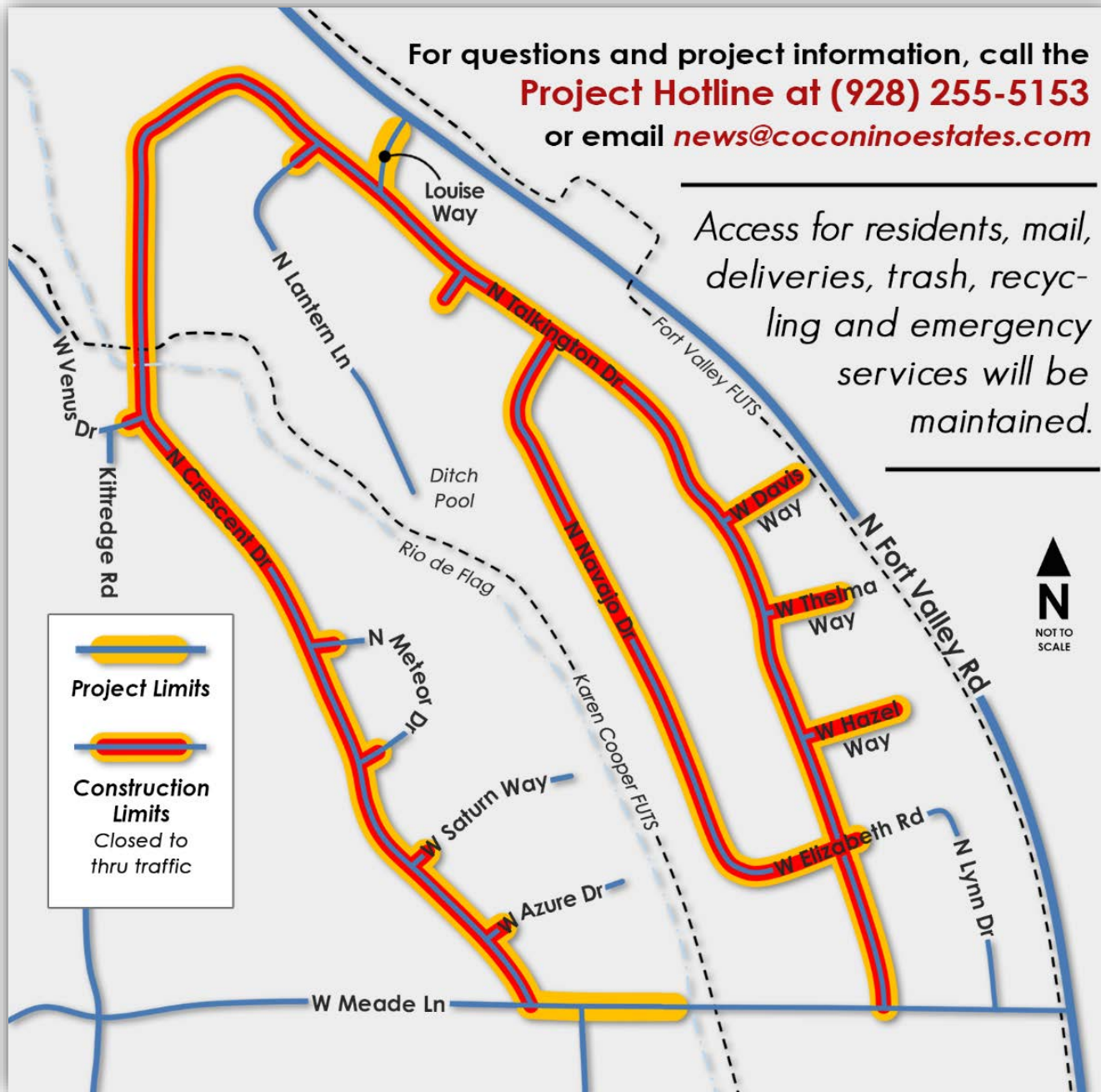
- Sewer installations and temporary roadway trench patches are complete.
- Water main and service installations are complete, with testing continuing and public and private connections remaining.
- Navajo is closed to non-residential traffic.

Talkington Drive and Side Streets

- The week of 3/7/2022 sewer installations began at the Meade intersection and continue working north.
- Sewer installations are also on going on Hazel, Thelma, and Davis.
- Talkington Drive is closed to non-residential traffic from Meade to Crescent.

For questions and project information, call the
Project Hotline at (928) 255-5153
or email news@coconinoestates.com

Access for residents, mail,
deliveries, trash, recyc-
ling and emergency
services will be
maintained.



Coconino Estates Improvements Phase II Project Map



Talkington north of Davis, looking north at sewer installations.



Hazel/Talkington intersection, looking east at sewer installations.

West Flag Improvements - David & Hutcheson (CONSTRUCTION PHASE)

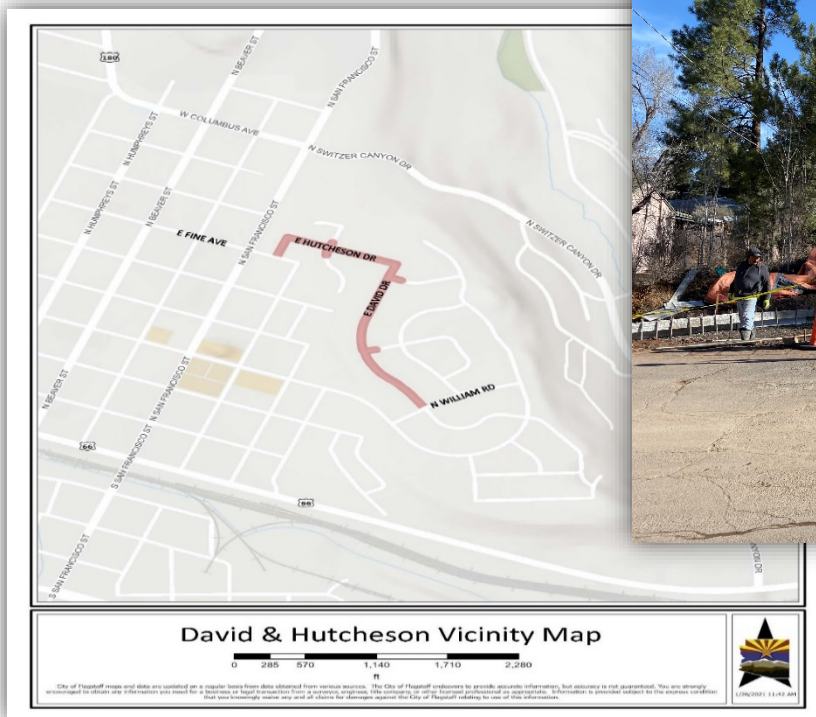
FUND: ROAD REPAIR & STREET SAFETY

Description - This is a utility and roadway improvements project located on David Drive and Hutcheson Drive as seen in the map below. The Project originally included Canyon Terrace and was bid as one project in the spring of 2020 but was pulled at the end of the bidding process given the economic and funding source uncertainties due to the COVID 19 Pandemic. It was decided to split the Project into two separate projects consisting of 1. David/Hutcheson and 2. Canyon Terrace. Improvements on the streets generally consist of replacing all existing utility and roadway infrastructure. The utility improvements include replacing the existing water and sewer mains (except for on David Drive), water and sewer services, fire hydrants, and manholes. The roadway improvements include replacing the existing asphalt roadway, replacing rolled curb with vertical curb on David Drive, and replacing select edge improvements (sidewalk, curb, and gutter). For additional information visit the Project website at www.Flagstaff.az.gov/westflagimprovements.

Contractor - Mountain High Excavating

Project Update:

- Water main, water and sewer service installations are complete on David.
- Storm drain improvements are complete on David.
- David roadway paving is complete up to William to 332 David, 40% of the Project, with the remaining roadway prep resumed the week of 3/28/2022.
- Concrete curb, driveway, and sidewalk installations are complete on David.
- Hutcheson gas main service installations by Unisource are complete.
- Water and sewer main and service installations are complete on Hutcheson.
- Concrete curb, driveway, and sidewalk installations continues on Hutcheson nearing Fine.
- The Winter Shutdown issued 12/17/2021, which MHE choose work through, will be lifted 4/4/2022.
- David and Hutcheson will be closed to thru traffic from William to Fine, with detours posted.



Hutcheson/Fine, looking north at Hutcheson concrete work.

Coconino Estates Improvements Phase I (CONSTRUCTION PHASE)

FUND: ROAD REPAIR & STREET SAFETY

Description - This is a utility and roadway improvements project located in the Coconino Estates neighborhood on Beal Road from Rockridge to Fort Valley, Navajo Drive from Navajo Road to Murray, Whipple Road from Navajo Drive to McMillan, and Navajo Road from Navajo Drive to Fort Valley. Improvements on the streets generally consist of replacing existing infrastructure with new, including water and sewer mains, water and sewer services, fire hydrants, storm drains, streetlights, the entire asphalt roadway, and defective select edge improvements (curb & gutter, sidewalk, etc.), except for Whipple Road which will only receive a new water main. There will also be new infrastructure added consisting of underground electric lines for streetlighting and sidewalk on both sides of the street where it does not currently exist on Beal Road, Navajo Drive south of Beal, and on Navajo Road. For additional information visit the Project website at www.coconinoestates.com.

Contractor - Eagle Mountain Construction

Project Update:

A new way of communicating project information has been started with the installation of a new project sign and banner prototype that include a QR code for the public to scan and view more information on the Project website.

Navajo Road (Construction Zone #1)

- Utility, roadway, and landscape restorations are complete.
- Navajo Road is open to all traffic.

Navajo Drive south of Beal (Construction Zone #2)

- Utility, roadway, and landscape restorations are complete.
- Navajo Drive south of Beal is open to all traffic.

Beal Road (Construction Zone #3)

- Utility and roadway improvements are complete as well as landscape restorations, except for the sod replacements at 510 Beal that will occur this spring.
- Minor striping improvements will be corrected at a later date when temperatures allow.
- Construction activities on Beal, west of the Rio de Flag, will pause for the winter and resume this spring.
- Beal is open to all traffic.

Navajo Drive north of Beal (Construction Zone #3)

- Water main and service installations, testing, and connections are complete from Beal to Whiting and on Whipple from Navajo to McMillan.
- Water main and service installations are complete from Whiting to Anderson, with testing and connections remaining.
- Water main and service installations continue north of Anderson.
- Sewer main and service installations are complete up to Whiting and will continue north.
- Navajo from Beal to Anderson is closed to thru traffic, with detours posted around the closure.
- Whiting from Navajo to Kutch is closed to thru traffic, with detours posted around the closure.
- Whipple from Navajo to 180 is closed to thru traffic, with detours posted around the closure.
- McMillan from Beal to Whipple is closed to thru traffic, with detours posted around the closure.

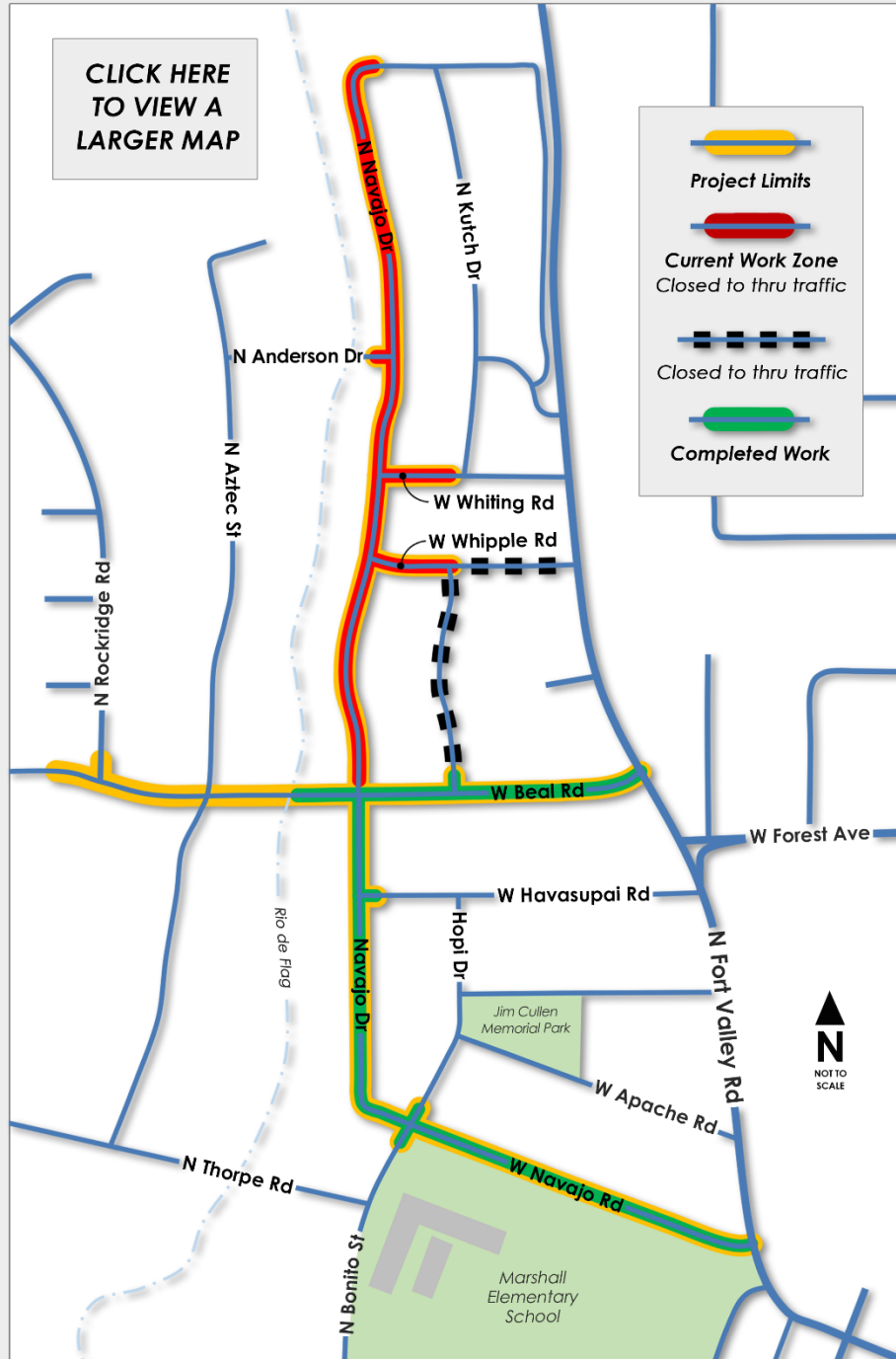


Navajo Dr. north of Anderson Dr., looking north at the water main and service installations.



Navajo Dr. at Anderson Dr., looking north the sewer main installations.

CLICK HERE
TO VIEW A
LARGER MAP



For general questions
and project
information, call the
Project Hotline at
(928) 255-5153
or email

news@coconinoestates.com



Residential access for mail, deliveries, trash, recycling, and emergency services will be maintained. No Mountain Line bus routes are affected during this time.

Project Map with current road closures and detours.

Flagstaff Downtown Mile Project (PLANNING AND DESIGN PHASE)

FUND: TRANSPORTATION, STORMWATER, AGING INFRASTRUCTURE, BNSF RAILWAY, METROPLAN, GRANTS

Description - The Downtown Mile Project consists of a group of City and local agency projects located in Downtown Flagstaff and surrounding the BNSF Railway corridor. They include:

- The Rio de Flag Flood Control Project
- The Rio de Flag Pedestrian Tunnel
- The Lone Tree Overpass
- The Florence to Walnut Pedestrian Underpass
- The Mountain Line Downtown Connection Center (DCC)
- The Milton Bridge Reconstruction



The city has partnered with ADOT, BNSF Railway, Mountain Line, Amtrak, and the Army Corps of Engineers for the overall Downtown Mile Project in order to coordinate existing funding, plan construction efficiencies surrounding the BNSF corridor, investigate multimodal connectivity, and to seek grant funding for unfunded BNSF mitigation measures to deliver these projects for the Flagstaff community.

The City applied for a USDOT RAISE Planning Grant in July 2021 to fund these planning activities and we received notice in early November that we were not successful. In lieu of the grant, supplemental funding from the City of Flagstaff, MetroPlan, and BNSF has been dedicated to continue the planning and design effort.

Project Update:

- The Request for Statements of Qualification draft was completed for planning and design of the Downtown Mile associated projects master plan and is under review with Procurement staff. Advertisement is anticipated for early April.
- Staff coordinated development of the IGA with MetroPlan to execute receipt of a \$490,000 funding contribution that was approved for the project planning and design effort.
- City and BNSF staff worked on planning the Construction and Maintenance Agreement documents required for the project components, with Phase I of the Rio de Flag being priority.
- City staff met with BNSF, ADOT Rail Safety, Federal Rail Administration, and the Arizona Corporation Commission to conduct a safety diagnostic review of the Beaver Street, San Francisco Street, Ponderosa Parkway, and Fanning Drive at-grade crossings. ADOT's Section 130, which deals with pedestrian rail safety, received \$3.2M in funding for signal, gate, and signage improvements to the local crossings. This will offset City costs for the required BNSF mitigation measures for the Downtown Mile improvements.

The current updates for the projects included in the Downtown Mile are as follows:

Rio de Flag Flood Control Project (Design Phase)

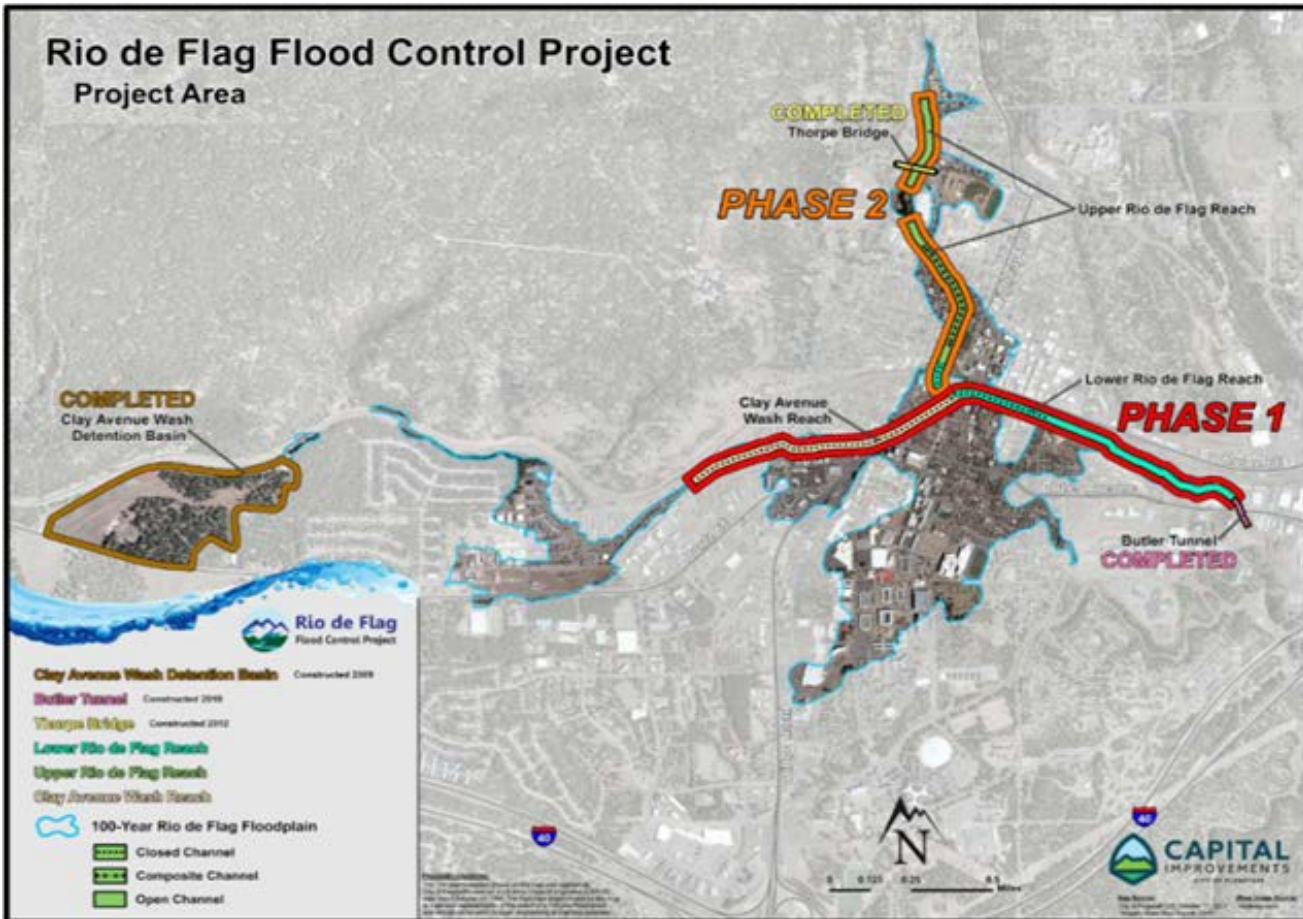
FUND: STORMWATER & AGING INFRASTRUCTURE

Description - Design consists of channel improvements along both the Rio de Flag and Clay Avenue Wash channels through central Flagstaff and includes a combination of underground concrete box culverts, open channel, and composite channel. The composite channel section has both an underground culvert to carry large volumes of water and a smaller open channel on top, which will provide an aesthetic element of flowing surface water during rainfall events. Total project length is approximately 15,000 feet.

The purpose of the Rio de Flag Flood Control Project is to remove the hazards associated with the hundred-year storm event, which include property damage, life safety concerns, and community economic impacts. From research conducted by the Army Corps, it was determined that a significant flood would damage approximately 1,500 structures valued at over \$916M and cause \$93M in economic damages, for a total impact of over \$1B.

Project Update:

- Work continued this month on refinement of the design plans and the real estate documents.
- Staff and BNSF continued coordination of the draft Construction and Maintenance Agreement.
- On March 23, City staff and the City's federal lobbyist met with Army Corps Head Quarters staff regarding updated WRDA funding. The Army Corps is currently updating the project cost estimate to determine additional funding needs and the 902 Limit.



Rio de Flag Pedestrian Tunnel (Design Phase)

FUND: STORMWATER & AGING INFRASTRUCTURE

Description - The Rio de Flag Pedestrian Tunnel will be constructed along with the flood control channel improvements under the BNSF corridor. The undercrossing will also be constructed under the ADOT Route 66 corridor. This will be a FUTS facility which will link north downtown and City Hall with the Southside neighborhood and the future Mountain Line DCC. Project progress will be reported in the Rio de Flag Flood Control Project item above.

Lone Tree Overpass Project (DESIGN PHASE)

FUND: TRANSPORTATION

Description - The Lone Tree Overpass Project will provide a grade-separated crossing over the future Rio de Flag drainage and the BNSF Railway corridor from Butler Avenue to Route 66. Funding for this project is provided through voter approved bonds as designated in the 2018 Proposition 420. The project will also include improvements from Butler south to Sawmill Road, which will be funded by Proposition 419. The project will be delivered via the Design-Build process and the team includes Ames as the contractor and WSP as the prime design consultant.

Project Update:

- Property acquisition is proceeding with appraisals, relocations, and offers to property owners.
- On March 1, City Council approved Contract Amendment #2 to Ames Construction, which will cover substantial design completion over the next year.
- City Beautification staff presented an on-line survey to the public for soliciting ideas on the aesthetics and public art components of the project. Over 140 responses were received.
- On March 11, the project team and City Beautification staff interviewed four candidates that will provide the beautification and art enhancements to the Project. One candidate was successful and is being contracted by the engineering firm.
- On March 21, the project team met with USACE to coordinate the Lone Tree Overpass with the future Rio de Flag channel. Discussion included property rights, and drainage inlets.
- Staff and several members of City Council held a meeting on March 24 to discuss the final approach to traffic modeling and intersection safety analysis.
- The team was scheduled to present to the Commission on Inclusion and Adaptive Living on March 22. Due to time, the presentation was rescheduled for April 19.
- The project team anticipates returning to City Council in May for updates on the traffic modeling, Butler and Lone Tree intersection, the Elden loop road, and the Economic Impact Study.



Florence to Walnut Pedestrian Tunnel (Design Phase)

FUND: TRANSPORTATION

Description - Design consists of a FUTS undercrossing of the BNSF corridor that will link Walnut Street and Florence Street in the La Plaza Vieja neighborhood. This project is in the approved La Plaza Vieja Neighborhood Specific Plan and is designed and funded. Upon investigation of the final rail relocation, the design will most likely need to be modified.

Milton Bridge Reconstruction (Planning Phase)

FUND: STORMWATER, AGING INFRASTRUCTURE, AND TRANSPORTATION

Description - The City is currently investigating reconstruction of the existing Milton Bridge structure to accommodate a third mainline track for BNSF and to provide a standard bridge clearance. The current clearance is 13'9" and the standard height is 16'6". The realignment and reconstruction will allow the city to construct the structures for both the Florence to Walnut pedestrian undercrossing and the Rio de Flag flood way and pedestrian tunnel while minimizing operational impacts and construction risk to the BNSF mainline. A minimum of two active tracks are required to be maintained for BNSF operations.

Mountain Line Downtown Connection Center (Design Phase)

FUND: GRANT

Description - The Downtown Connection Center is included in the Downtown Mile project report due to the City's partnership with Mountain Line for developing the site and the opportunity to plan the facility with multimodal connections with the rest of the Downtown Mile projects. There are also current discussions for future co-location of the Amtrak Station.

Project Update:

- The city is facilitating coordination of the DCC site improvements with the future Rio de Flag construction.
- Mountain Line continues its effort to the NEPA work as required by the Federal Transit Authority.
- Staff has begun to prepare an IGA that will be negotiated with Mountain Line following the completion of the NEPA. Mountain Line hopes to have the IGA before the City Council in May 2022 for approval.
- Mountain Line plans to begin construction of its building in Phase I this Summer (2022).

East Route 66 and El Paso Flagstaff Waterline Extension (CONSTRUCTION PHASE)

FUND: AGING INFRASTRUCTURE

Description – A utility improvements project that extends the 12” ductile iron waterline approximately 2,450 linear feet from approximately the intersection of Test Dr. and Rt. 66 to the intersection of El Paso Flagstaff Rd. The waterline extension continues north, up El Paso Flagstaff Road towards the Wildcat Hill Wastewater Treatment plant, with approximately 1,600 linear feet of new 8” ductile iron waterline. The project also calls for a repaving of El Paso Flagstaff Road for the extents of the waterline extension.

Contractor – Scholz Contracting, LLC

Project Update :

- A Notice to Proceed has been issued for March 14th, 2022. Tentative project completion is for September 2022.
- On the week of March 21st our Contractor, Scholz Contracting, mobilized and installed SWPPP.
- On the week of March 28th Scholz Contracting began installation of the 8” ductile iron waterline that runs the length of El Paso Flagstaff Rd.



El Paso Flagstaff Rd., looking south at the start of the installation of the 8” ductile iron waterline

Huntington Waterline Replacement (CONSTRUCTION PHASE)

FUND: AGING INFRASTRUCTURE

Description - The Project consists of installing 3,000 LF of new 16" ductile iron waterline, and associated roadway improvements. Included in the project will be new water services, fire hydrants and air release valves. The existing waterline in this area is over 60 years old. This project is part of the City's ongoing aging water infrastructure replacement program.

Contractor - Sellers and Sons, Inc.

Project Update:

- Crews continue to work through punch list items provided by Staff. A winter shutdown was issued for remaining asphalt work.



Huntington Waterline Replacement, crews working to finish concrete work at U-Haul related to the waterline replacement

Phoenix Avenue Bridge and Waterline Replacement (Construction PHASE)

FUND: STORMWATER & AGING INFRASTRUCTURE

Description - The project will replace the Rio de Flag box culvert (which runs beneath Phoenix Avenue and the Zani building, and functions as the Phoenix Ave bridge) with the appropriate conveyance structure and will upsize the current waterline to a 12" waterline in Phoenix Avenue from Mikes Pike to Beaver Street. Phoenix Avenue will be reprofiled and lowered to achieve a standard street section, roadway surface drainage issues will be addressed, edge improvements will be made as needed and the roadway will be repaved. The existing waterline in this area is over 114 years old. This project is part of the City's ongoing aging water infrastructure replacement program.

Project Update:

- Staff is working through as-built, ADEQ review and a few remaining punch list items. The project is tracking for issuance of Final Acceptance mid-April.
- Phoenix Avenue re-opened Monday, February 21st.
- A Certificate of Substantial Completion has been issued. The Contractor and Staff will work through punch list items over the next couple of weeks.



Phoenix Avenue

Library Entrance (CONSTRUCTION PHASE)

FUND: BBB - BEAUTIFICATION

Description – Project to bring Library Entrance into ADA compliance with new handicap ramp and new overall vision for the entrance. Public art will be incorporated into project and an artist is being brought onto the design team. Project includes upgrades to landscaping, handicap-accessible parking, parking lot, and hardscape.

Project Update:

- The first project advertisement to the City Job Order Contracting (JOC) contractors was unsuccessful due to heavy contractor workloads.
- Additional flexibility was added to the project timeline and the project bid opportunity was extended for the JOC contractors, with a deadline for submitting bids set for April 8th.



Library Entrance Project-Rendering of selected concept plan

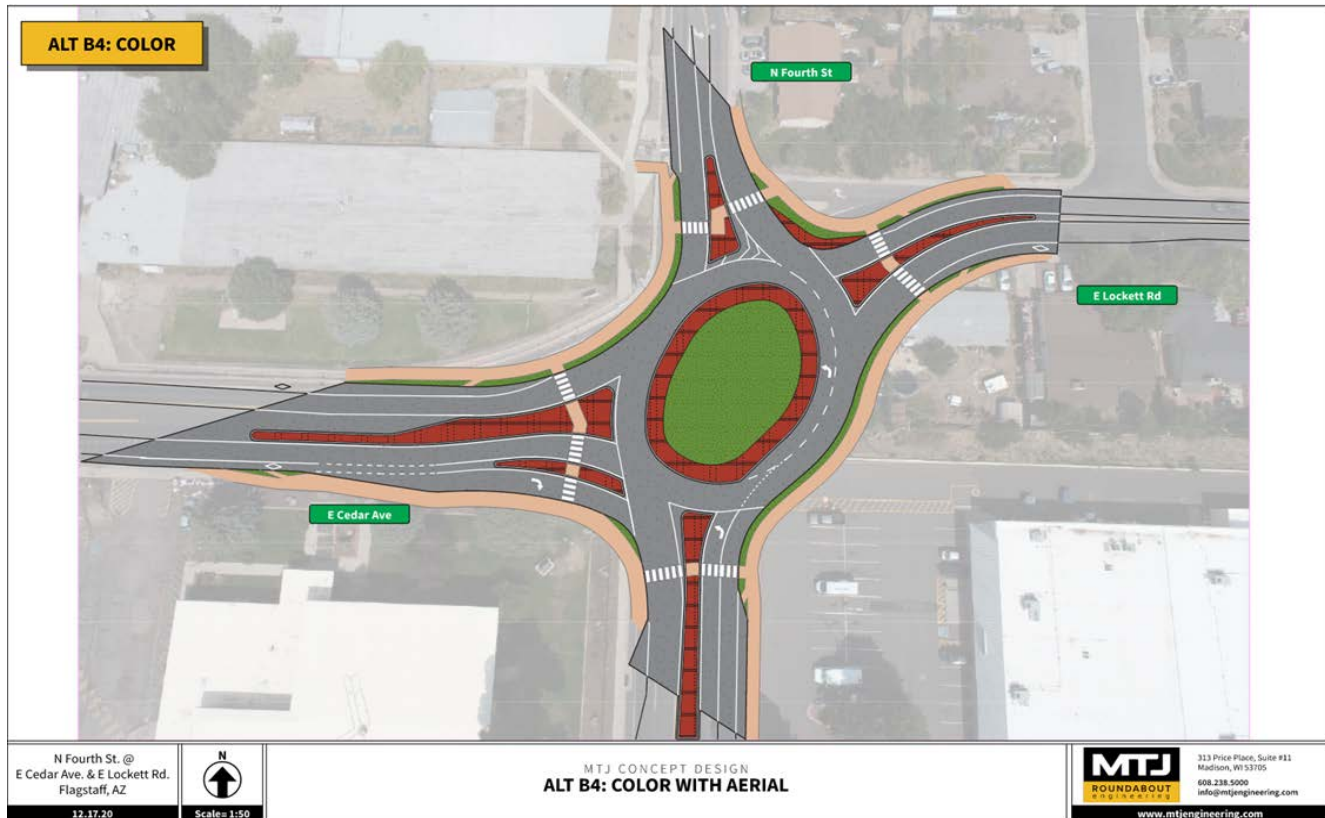
Lockett/Fourth Roundabout (DESIGN PHASE)

FUND: HSIP GRANT, TRANSPORTATION TAX

Description – Project consists of the design and construction of a new roundabout at the Lockett-Cedar-Fourth Street intersection. Project is funded by an HSIP Grant, with supplementary funding from City of Flagstaff. Project design and construction to be administered by ADOT. The new roundabout will improve safety and operations for vehicles, pedestrians and bicyclists in this busy intersection. Project design and construction to be administered by ADOT.

Project Update:

- Project team is in discussions regarding allowable closures and maintenance of traffic options.
- The project team is working through the 60% design comment resolution process.
- The team is currently reviewing impacts to surrounding properties and working to mitigate impacts.
- An IGA amendment will be brought to City Council on April 5th. The amendment incorporates additional design scope and project funding, and adds City involvement in project inspections during the construction phase.
- If the IGA amendment is approved, the project will move into the property acquisition phase.



Selected Design Alternative- Lockett-Cedar-Fourth Intersection

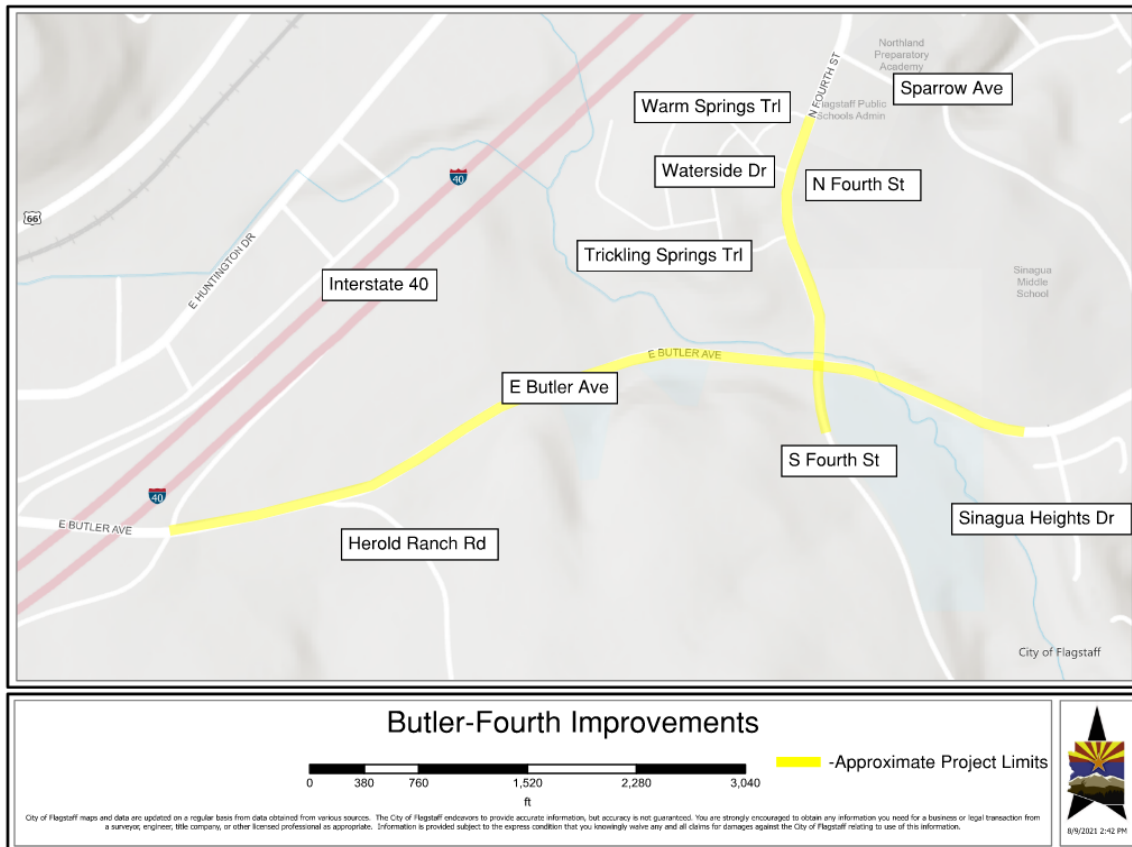
Butler-Fourth Improvements (PLANNING PHASE)

FUND: TRANSPORTATION TAX

Description –In general, the project consists of widening present-day Butler Avenue from Little America to Sinagua Heights and widening present-day Fourth Street from Warm Springs Trail/Sparrow Avenue to the upcoming Canyon Del Rio development south of Butler Avenue. Extensive public outreach and stakeholder engagement is expected during project development, including the preparation of conceptual alternative designs and preliminary feasibility analyses. Several intersections, new and existing, will be impacted along Butler Avenue. The Herold Ranch Road intersection will be re-aligned and converted to a roundabout. The Butler Avenue and Fourth Street intersection will consider a roundabout vs signalized intersection and will be raised to reduce flooding impacts from Spruce Avenue Wash. The project will include ITS (Fiber Optic Conduit) facilities and enhanced bicycle and pedestrian treatments, including a possible separated pedestrian crossing at the Butler Avenue/Fourth Street intersection. Acquisition of new Right-of-Way is expected.

Project Update:

- An update on the project, including planned next steps, and enhanced public outreach and engagement efforts was provided to City Council on March 29th.
- The Engineering Design Services RSOQ is expected to be advertised shortly.



Approximate Project Limits- Butler-Fourth Improvements

Rte. 66 at Fanning Landscaping (DESIGN PHASE)

FUND: BBB - BEAUTIFICATION

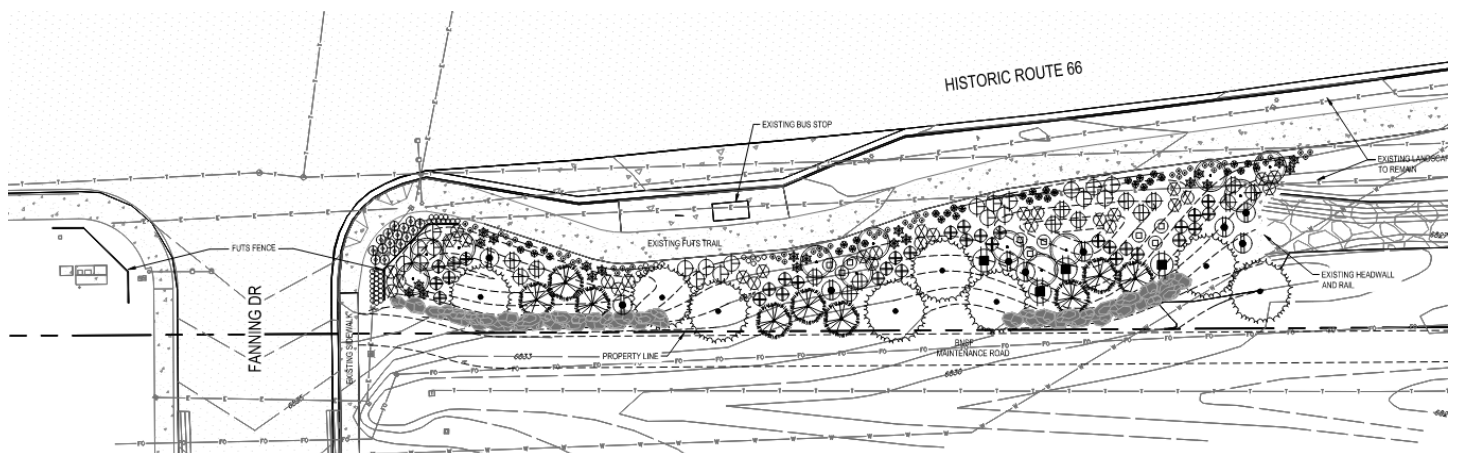
Description – This project will beautify the southeast corner of the Rte. 66 and Fanning Drive intersection with the addition of new landscaping, boulder walls, and FUTS fencing.

Project Update:

- The project team continues to work with Parks to select a final plant list.
- Preliminary plans have been received and are under review.



Rte. 66 At Fanning Landscaping-Existing Conditions



Rte. 66 At Fanning Landscaping-Preliminary Landscape Plan